

SOUTHERN ILLINOIS UNIVERSITY
EDWARDSVILLE

ONLINE SERVICES & EDUCATIONAL OUTREACH

SUMMER 2026 CATALOG



ENRICHING + EMPOWERING + ENGAGING EDUCATION *for all*

SUMMER FOCUS

With longer days and more flexible schedules, summer offers an ideal opportunity to explore new interests, focus on professional development, and pursue academic goals. Whether you are building new skills, discovering a new passion, or creating meaningful opportunities for your family, SIUE is here to support your journey.

Through youth camps, personal enrichment, professional development, and flexible learning options, the Office of Online Services and Educational Outreach offers programs designed to meet you where you are and help you move forward with confidence.

Wherever this summer takes you, thank you for choosing SIUE as part of your plans. We are excited to support your learning journey and hope to see you online, on campus, or in the community this summer.

Warmly,

The Online Services and Educational Outreach Team

ONLINE REGISTRATION

Follow the steps below to create an account and register for Online Services and Educational Outreach Programs.

1. Create an account.

If this is your first time registering for a membership, trip or non-credit course online, you must create an account.

- Go to: <https://www.enrole.com/siue/>
- Click on "Sign In/Create Acct" in the left navigation menu.
- Select "Create Account" and proceed to enter your information.
- Be sure to select "Yes" to receive emails and mailings from us with information about upcoming programs.
- Also, you will want to select "Individuals" before clicking "Submit" at the bottom of the page.

2. Add items to your cart.

After you have created an account or logged in, use the navigation menu on the left to select which category, courses, memberships, or trips you want to add to your cart. Once you find the item you want to add, click "Add to Cart."

- If your course is hosted on the SIUE Edwardsville campus, there may be parking charges included. Select "Registration Fee - Without Parking," if you either would not like to pay for a parking pass or are associated with the University and have a University hang tag. Select "Registration Fee - Parking Included" if you would like to obtain a parking pass for the duration of the offering.
- From here you may either continue shopping or check out. If you are registering for a course that requires a promo code, you may enter it on this screen. Follow the prompts on the subsequent screens.

WHAT'S INSIDE

SUMMER CAMPS..... 4

JUNIOR COUGARS AT COLLEGE..... 4

OFF-CAMPUS AND CORPORATE PARTNERSHIPS..... 5

CAREERS IN WATER TREATMENT TECHNOLOGY..... 6

PERSONAL DEVELOPMENT..... 7-17

- Creative Arts
- Culinary Arts
- Hobbies and More
- Languages
- Writing

TEST PREPARATION..... 18-19

PROFESSIONAL DEVELOPMENT..... 20-34

- Grant Writing
- SIUE Online Degrees and Post-Baccalaureate Certificates
- Workforce Investment and Opportunity Act Program
- Online Certificate Opportunities
- Industry-Aligned Credentials

EDUCARD..... 35

ONLINE SERVICES AND EDUCATIONAL OUTREACH POLICIES..... 35



SUMMER CAMPS
PAGE 3



WRITING
PAGE 17



ARTIFICIAL INTELLIGENCE
PAGE 28

Follow us on social!



siue.edu/educational-outreach



2026 SUMMER CAMPS

Ready for a summer of discovery?

Get ready for an unforgettable summer at SIUE! Students in kindergarten through high school are invited to spend time on campus this summer exploring new interests and discovering bright futures. SIUE summer camps, offered by the Office of Online Services and Educational Outreach and led by expert faculty and staff, combine hands-on learning with nonstop fun. Make new friends, try exciting activities, and learn something new every day. There are so many things to discover at SIUE!

PERFORMING ARTS

- **Junior Theater Camp**

Grades K-4
July 20-25

- **Dance Camp**

Grades 2-8
June 22-26

- **Dance Intensive**

Grades 7-12
August 3-7

- **String Development Camp**

Grade 3+
July 6-10

- **Jazz Camp**

Grades 6-12
July 13-16

- **Vocal Arts Camp**

Grades 7-12
July 28-31

- **Band Camp**

Grades 6-10
June 23-26

- **Percussion Institute**

Grades 6-12
June 1-4

- **Midwest Flute Institute**

Grades 6-12
June 8-11

- **Midwest Clarinet Institute**

Grades 7-12
June 15-18

VISUAL ARTS

- **Arts Camp**

Three Sessions per Grade Level
Grades K-1, 2-3, 4-5, 6-8
June 1-5
June 8-12
June 22-26

Browse a full list of summer camps, view registration details, and more. siue.edu/summer

All summer camp dates and offerings are subject to change. Please check the website for final information.

WRITING AND MEDIA

- **Script to Screen: Producing a Short Film**

Grades 10-12
June 15-25

- **Writing Camp**

Grades 3-12
July 6-17

STEM

- **Engineering Camp**

Grades 9-12
Session 1: June 1-5
Session 2: June 8-12

- **Odyssey Science Camps**

Grades 2-9
July 20-31



OFF-CAMPUS AND CORPORATE PARTNERSHIPS

siue.edu/corporate

Corporate Affiliates Pilot Program

SIUE offers a pilot program for corporations, non-profits, and government agencies that provides tuition reimbursement to employees. Through a simple contract between the employer and SIUE, employees receive a waived application fee, a tuition discount, and concierge service such as registration help, a dedicated contact for questions that may arise, and assistance navigating a return to the classroom for busy working adults. If your company offers tuition reimbursement and you're not already receiving this benefit, contact our office today to discuss this exciting new opportunity because openings are limited!

Traditional Corporate Partnerships

SIUE partners with organizations to offer educational and training opportunities for their employees. Through a unique contractual agreement, credit and non-credit opportunities are available to your staff so they can earn advanced credentials without ever receiving a bill from SIUE. Partnership students benefit from curriculum specifically designed for the working professional. If you do not see your employer on this list, we will be pleased to work with your human resources department to add your organization to our growing list of partners who recognize the value of investing in their employees' professional development.



JUNIOR COUGARS AT COLLEGE!

Whether your junior Cougar is exploring new interests or already dreaming of a future career, our Junior Cougars at College courses gives them the chance to discover passions, build skills, and learn about a wide range of career paths. We also offer sessions designed just for you so you can also learn as they grow. Join our campus staff and community partners for engaging programs that introduce new ideas, hands-on experiences, and exciting opportunities to learn together.

Belleville Campus Money Matters and More for Students

This course introduces middle and high school aged students to practical money management skills needed for financial well-being; learning to create budgets, understanding banking services, and setting actionable goals. Students will also learn how to identify and avoid different types of loans that cause vicious cycles of debt. Through hands-on activities and real-world applications, students will build the knowledge and confidence to make informed financial decisions and establish healthy financial habits.

Course Fee: Free
1:30 p.m., Tuesday, July 28
SIUE Belleville Campus



PERSONAL DEVELOPMENT



CAREERS IN WATER TREATMENT TECHNOLOGY SIUE ENVIRONMENTAL RESOURCES TRAINING CENTER

Water Quality Control Operations Program

Program Cost: \$9,900

siue.edu/ertc

PROGRAM

The SIUE Environmental Resources Training Center (ERTC) Water Quality Control Operations Program is a one-year, full-time program of study leading to a certificate of completion. Classes meet Tuesday-Friday for nine months starting in mid-August each year. During the summer, students complete a 10-week internship program where they work five weeks at a drinking water treatment plant and five weeks at a wastewater treatment plant.

Upon completion of the full-year program, students are qualified to enter the water and wastewater industry as water operators, wastewater operators, distribution/collection workers, laboratory technicians, or maintenance workers.

FACILITIES

The ERTC facility provides students with two fully equipped wet chemistry teaching labs, classrooms, auditorium, library/computer center, 30,000 gallon/day training-scale drinking water and wastewater treatment plant, and the 0.5 million gallon/day SIUE University wastewater treatment plant.

CERTIFICATIONS

Students are eligible to take Illinois and Missouri certification exams to become certified as drinking water and wastewater operators-in-training. Upon completion of the ERTC program, graduates are eligible for full certification.

Contact the Environmental Resources Training Center for more information.

ertcinfo@siue.edu | 618-650-2030



siue.edu/personal-development



Beginning Drawing

Drawing is a skill that can be developed with practice. You will learn how to draw with proper techniques and discover how to represent what you see through studies in contour drawing, perspective, positive/negative space, and value.

Course Fee: \$59
Mondays, 5-6:30 p.m., June 1-July 6
Online via Zoom

This course gave me additional skills while not being too overwhelming for someone who doesn't draw all the time.

- ADRIANA M.

“/”

Intermediate Drawing

For those with some drawing experience, you will refine and expand your drawing and observation skills.

Course Fee: \$59
Wednesdays, 5-6:30 p.m., June 3-July 8
Online via Zoom



Learning to Knit: Two Sticks and a String

Learn to knit in a relaxed environment. We will discuss yarn and tool selection, and you will learn basic stitches and how to read a pattern while completing a simple project. Don't be scared. It's just string!

Cost: \$89*
Tuesdays and Thursdays, 6-8 p.m., June 9-25
SIUE Edwardsville Campus



Botanical Watercolor Painting

Your instructor Kenzie will walk you through a variety of painting mediums to explore rendering various types of trees, flowers, leaves, and plants. Beginning projects will be explored using the loose and expressive medium of watercolor, but you are encouraged to use any painting medium you would like through the remainder of the course. This class is open to all skill levels, from beginners to advanced painters. Explore the types of botanicals that most interest you!

Course Fee: \$109*
Mondays, 3:30-5:30 p.m., June 15-July 20
SIUE Edwardsville Campus



Oil Painting Landscapes: Beginning and Intermediate

This visual arts course will focus on bringing landscapes to life through oil painting. Your instructor will facilitate explanations of fundamental painting elements as you work, as well as give some examples of different styles used in history to paint the great outdoors. As you move through this course, you will work on projects that interest you while you receive helpful feedback to improve your painting skills. Supply lists will be provided for you to purchase your own supplies.

Course Fee: \$109*
Mondays, 6-8 p.m., June 15-July 20
SIUE Edwardsville Campus

Printmaking: Beginning and Intermediate

In this course, you will explore relief, intaglio, and monotype printmaking techniques. Whether you are a beginner or experienced printmaker, this course welcomes you to develop new or refine existing printmaking skills. You may work on a single project or bounce between multiple works in progress. The instructor will provide you with guidance and support throughout the course.

Course Fee: \$129
Saturdays, 10 a.m.-1 p.m.
Two Sessions Available:
• June 6-27
• July 11-August 1
SIUE Edwardsville Campus

CREATIVE ARTS (CONT.)



Relaxing Watercolor Practice

Curious about watercolor but not ready to invest in new supplies? Already have materials but unsure where to start? Bring what you have and come experiment. Join Miss Ruthie for a relaxed session of watercolor exploration. We'll begin with a brief introduction to basic washes and simple techniques, then open the studio for experimentation and practice. Each participant will receive a large sheet of watercolor paper to test ideas, play with color, and build confidence. No pressure, no expectations — just time to explore and learn through experimentation. Feel free to bring snacks or drinks and settle in for a comfortable, creative session. Students ages 13 and up are welcome!

Course Fee: \$50
Friday, 6-8 p.m., June 12
Macoupin Art Collective, Staunton

Relaxing Watercolor Practice: Brush Strokes and Techniques

Want to try watercolor but hesitant to invest in supplies? Or looking to improve your brush control and technique? This relaxed session is a chance to practice without pressure. Join Miss Ruthie for a brief introduction to watercolor brush techniques and a few guided exercises, followed by open studio time to experiment and build confidence. Each participant will receive a large sheet of watercolor paper for practice, and you're welcome to bring your own materials. This course pairs well with Watercolor Practice: Washes on June 12 but can easily stand on its own. Bring snacks or drinks, get comfortable, and enjoy time to explore and create. Students ages 13 and up are welcome!

Course Fee: \$50
Friday, 6-8 p.m., June 19
Macoupin Art Collective, Staunton

DIY Home: Ceramic Pinch-pot Snack Trays

Miss Ruthie will guide students in creating a ceramic snack tray and spoon — perfect for serving summer treats at picnics or gatherings with friends. Students will learn basic handbuilding and pinching techniques, experiment with simple glazing methods, and explore how to use a variety of clay tools while gaining a better understanding of clay and its properties. Each participant will create at least one tray and one spoon, decorating and glazing their pieces for a single firing. Students are encouraged to bring snacks and drinks and enjoy a relaxed, creative atmosphere while making art.

Course Fee: \$55
Friday, 6-9 p.m., Aug. 7
Macoupin Art Collective, Staunton



Paint with Bob Ross

Come and join Ms. Ruthie and paint-along with Mr. Bob! This is a fun class for all skill levels. You will be working with oil paints and brushes and turpenoid to clean your brushes. We will cue up an episode of "The Joy of Painting" and start and stop the episode while we paint along with Bob. All materials and instruction are included for this three-hour session.

Course Fee: \$55
Friday, 6-9 p.m., Aug. 21
Macoupin Art Collective, Staunton

CULINARY ARTS



BREADS

Participants will take all recipes and finished products (20-30 loaves of bread) home. All ingredients will be provided for the baking process. All classes held at 222 Artisan Bakery, 222 St. Louis St., Edwardsville.

★ Artisan Breads I

Learn the basics of bread-making, including terminology, ingredient functionality, mixing and dough development, dough handling, and the steps to the fermentation process.

Course Fee: \$149
Monday-Wednesday, 5-8 p.m.
Three Sessions Available:
June 15-17
July 6-8
Aug. 10-12

★ Artisan Breads II

This course will build on the knowledge learned in Artisan Breads I with a focus on sourdough breads and the functions of bread making.

Course Fee: \$149
Monday-Wednesday, 5-8 p.m., July 20-22

Artisan I or II must be taken before participating in any of the following courses.

★ Italian Breads

A simple look at classic Italian bread recipes including focaccia, ciabatta, fougasse, and pizza dough recipes.

Course Fee: \$149
Monday-Wednesday, 5-8 p.m., July 27-29

Breads of the British Isles

Take a step across the pond as this course ventures through the history and techniques used to make some classic bread recipes from the British Isles. Learn to bake Victorian milk bread, Irish brown bread, soda bread, bara brith, and a few more favorites.

Course Fee: \$149
Monday-Wednesday, 5-8 p.m., Aug. 3-5

HOBBIES AND MORE



Stamp Collecting

Whether you've inherited a stamp collection, are considering starting one, or are a current collector who still considers yourself a beginner, this course is designed for you! You will explore a high-level overview of topical collecting, learn about essential tools and resources, and discover a variety of materials to help the early philatelist strengthen and grow their collection. The session will conclude with a Q&A discussion hosted by the director of the National Museum of African Americans on Stamps.

Course Fee: \$25
Tuesday, 6-7 p.m.
Three Sessions Available:
June 2
July 7
August 4
Online via Zoom



Heartsaver® CPR/AED Certification

No medical training? No problem! Heartsaver® courses are designed for anyone willing to learn first-aid basics for the most common first-aid emergencies. You will receive hands-on training in cardiopulmonary resuscitation (CPR) and learn to use an Automatic External Defibrillator (AED) in a safe, timely, and effective manner. You will receive a two-year certification card upon course completion.

Course Fee: \$99
Two Sessions Available:
1 p.m., Wednesday, Aug. 5
5 p.m., Thursday, Aug. 6
SIUE Belleville Campus

Stop the Bleed

Trauma-related deaths account for approximately 40% of fatalities worldwide, with severe bleeding being the leading cause. Time is critical when someone is experiencing severe bleeding, as they can succumb to their injuries in as little as five minutes. This training emphasizes the urgent need for bleeding control by containing blood loss. This course follows OSHA guidelines, covers identifying bleeding types, and identifies bleeding control techniques like applying pressure, wound packing, and using a tourniquet. You will receive a printable certification upon finishing the course and passing the final exam.

Course Fee: Free
Two Sessions Available:
10 a.m., Wednesday, Aug. 12
5:30 p.m., Thursday, Aug. 13
SIUE Belleville Campus



Rise and Shine: Yin to Flow

Experience the benefits of early morning yoga as you Rise and Shine to stretch and strengthen your body, awaken and refresh your mind, and nourish your spirit. This class is designed to recalibrate the body, mind, and breath. Our practice will focus on the synchronization of movement and breath. You will build endurance, flexibility, strength, and mental focus during this class. Instructor Louise M. Hamlin-Laird, BS, E-RYT 500, YACEP, Certified Personal Trainer, will give options to make this class more accessible while keeping it challenging. You will feel energized, refreshed, and ready for anything the day has in store. This class may use optional light weights.

Course Fee: \$90 for 10-week session;
Drop-ins welcome at \$15 per session
Saturdays, 9-10 a.m., June 6-Aug. 8
Immanuel Methodist Church, Edwardsville

HOBBIES AND MORE (CONT.)



Next Level: Intermediate Golf

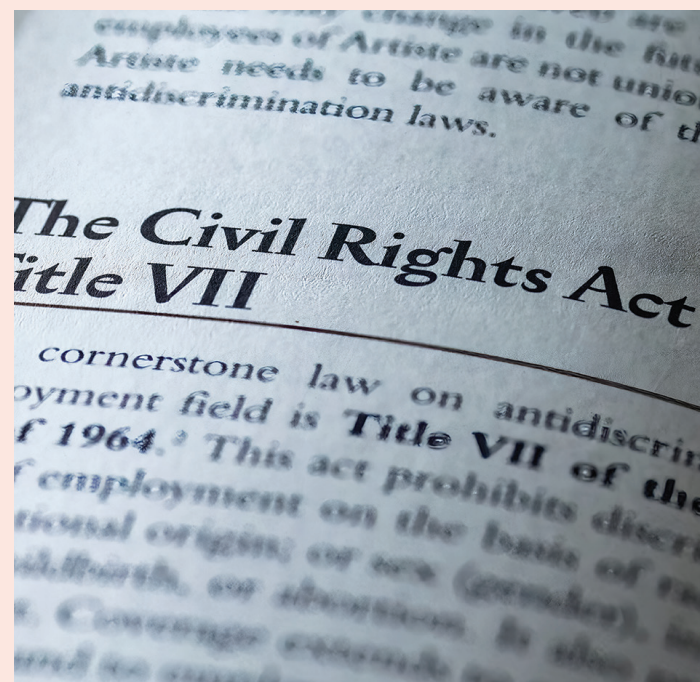
This hands-on course is perfect for golfers who want to take their love of the sport to the next level. You'll sharpen your skills with your driver, fairway clubs, and irons while building strong pre-shot routines and consistent habits.

Course Fee: \$169
Thursdays, 3-4:30 p.m., July 2-30
Sunset Hills Country Club, Edwardsville

Sunset Hills Country Club's training facility is absolutely the best around. Instructor Jon DePriest is very knowledgeable of golf and explains the fundamentals and more very well. After completing this course, I shot the best round ever. My golfing buddies are super impressed with my game's improvement.

- BRYON C.

“/”



Hallowed Ground: Civil Rights Pilgrimage and Historical Memory

Community members are invited to join Bryan Jack, PhD, professor of history, and Tandra Taylor, PhD, associate professor of history and interim director of the SIUE Institute for Community Justice and Racial Equity, for an exploration of the Civil Rights Movement through an immersive, travel-based learning experience. This course blends traditional learning with on-the-road instruction, turning a bus into an extension of the classroom. Through visits to significant historical sites in St. Louis, Atlanta, and Montgomery, Ala., along with music, film, literature, and scholarly discussion, participants will examine key themes that have shaped democratic life over the past century, including race, gender, social class, grassroots organizing, and nonviolent direct action. On our trip, participants will engage with local experts, participate in guided discussions and reflection, and visit important landmarks of the Civil Rights Movement.

Course Fee: \$1,750
May 20-29
Instructor Approval Required

LANGUAGES



Belleville Campus Italian for the Traveler

Are you preparing for a trip to Italy? Get ready to travel with confidence and connect deeply with Italian culture with this engaging language course. Through practical lessons and real-life scenarios, you will develop the skills to order food, ask for directions, navigate transit, and handle common travel situations with ease. You'll also explore cultural customs and etiquette that will help you respectfully connect with locals.

Course Fee: \$89
Mondays, 4:30-6 p.m., June 1-22
SIUE Belleville Campus

Belleville Campus Advanced Italian

If you already have knowledge of this beautiful language, this course is designed just for you! Join us as we continue our journey through learning the Italian language and delve deeper in grammar and syntax.

Course Fee: \$89
Mondays, 6:30-8 p.m., June 1-Aug. 3
SIUE Belleville Campus

Italian was a great class that far exceeded my expectations. I can't wait to continue learning from Barbara Klein.

- PAT V.

“/”



Conversational Spanish: Beginners Level 3

This class is ideal for those who have taken the introductory level Spanish courses or who have previous knowledge of the language and wish to enhance their conversational skills. Join us as we journey deeper through the Spanish language. You will focus on live conversations, building vocabulary, and strengthening grammar skills. Written exercises and audios will be given as homework.

Course Fee: \$109
Mondays, 6-8 p.m., June 1-July 20
Online via Zoom

Advanced Spanish: Uses of the Subjunctive Mood

This intensive, 9-hour master class is designed for advanced Spanish learners who want to move past textbook rules and start thinking in the language like a native speaker. This course will focus on when and why one must use the subjunctive and pluperfect subjunctive. This is the ideal course for a student who wants to test out of a 200-level college Spanish course, as well as those who speak Spanish well and want to sound more like a native speaker.

Course Fee: \$79
Saturdays, 9 a.m.-noon, June 13-27
SIUE Edwardsville Campus

LANGUAGES (CONT.)



New! Basic English for Deaf and Hard of Hearing Adults

This course is designed to support adults who are Deaf or Hard of Hearing develop basic English skills for everyday communication. Through interactive lessons, visual learning strategies, and language-rich activities, students will improve their use of English for everyday life and the workplace. Instruction is delivered in an accessible, inclusive environment that values visual learning and bilingual approaches using American Sign Language and English.

Course Fee: \$199*
Tuesdays, 4:30-6:30 p.m., May 26-Aug. 26 (No class July 6)
SIUE Edwardsville Campus

INTENSIVE ENGLISH PATHWAY

Strengthen Your English Skills

SIUE's Intensive English Pathway (IEP) is a great resource for those who would like to strengthen their English skills and improve reading, writing, listening, and/or speaking through interactive classes. This program offers affordable classes to English language learners in multiple skill sets. Each semester, the IEP offers a variety of English language classes to suit learners' needs. Courses run in eight-week blocks throughout the academic year and average 50 minutes per week. *Registration deadlines are one week prior to each session start date.*

Visit siue.edu/iep for up-to-date information on course names and schedules.
Contact Asha Mattan at amattan@siue.edu for more information.

WRITING



Creative Nonfiction

Life can give us so many fascinating anecdotes — here's your chance to develop them into stories you can write for your family and friends or share with a wider audience. The course covers many types of writing, from memoirs and poetry to historical writing and personal essays. Start from something that has happened and then build it into a compelling piece of work. Here's your chance to have fun exploring the subject, whether you've been writing creative nonfiction for years or you're trying it out for the first time.

Course Fee: \$69*
Tuesdays, 6-8 p.m., June 23-July 14
SIUE Edwardsville Campus

Belleville Campus Creative Writing

Do you have a story you would like to tell, but you are not sure where to start? Join us in exploring the many ways you can make that story a reality. In this course, you will look at fiction, creative nonfiction, and non-fiction narratives, examine the parts of a story, and learn how to develop them effectively. Whether this is your first time writing or you are an old pro, you will have a chance to hone your craft and have a lot of fun along the way.

Course Fee: \$59
Wednesdays, 6-8 p.m., June 24-July 15
SIUE Belleville Campus

Belleville Campus Screenwriting Bootcamp

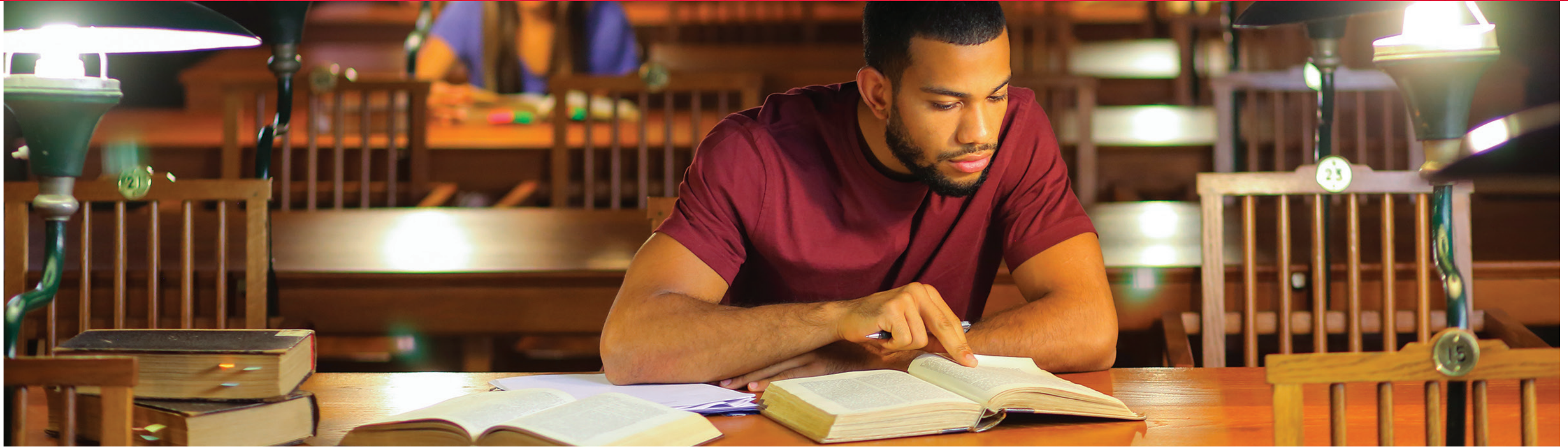
If you are a movie or TV lover and have always wanted to try your hand at writing a script, this is your chance to make it happen. This course will look at the three core elements of screenwriting, including formatting, craft, and storytelling, and will explain how to use today's screenwriting software. Work on a script for a short film, a feature, or a television drama or comedy, and have fun in the process!

Course Fee: \$59
Tuesdays, 6-8 p.m., July 21-Aug. 11
SIUE Belleville Campus

Belleville Campus Writers Workshop

If you're familiar with the basics of narrative structure and you have a story project you are working on, or if you would like to start a new project, this workshop is for you! Each week, every writer will have a chance to receive thoughtful, useful notes on their projects from other group members in a supportive, encouraging environment. We will also discuss various facets of the storytelling process to continue growing as writers.

Course Fee: \$59
Wednesdays, 6-8 p.m., July 22-Aug. 12
SIUE Belleville Campus



Whether you are starting college or looking to pursue an advanced degree, we have a test preparation course for you! These courses are offered in a variety of formats, from one-day to weekly, and are offered in a fully online format to better fit into your busy life. All courses are hosted online via Adobe Connect, which is free to download.

ACT/SAT Strategy Workshop

Course Fee: FREE
Wednesdays, 8-9 p.m.
Two Sessions Available:

- May 20
- June 17

ACT Live - Online Prep Course

Course Fee: \$399
Five Sessions Available:

- Tuesdays and Thursdays, 2-4 p.m., June 2-25
- Sundays, noon-4 p.m., June 7-28
- Monday-Thursday, noon-4 p.m., June 8-11
- Monday-Thursday, 8 a.m.-2 p.m., June 22-25
- Tuesdays and Thursdays, 6-8 p.m., Aug. 4-27

SAT Live - Online Prep Course

Course Fee: \$399
Seven Sessions Available:

- Monday-Thursday, 8 a.m.-noon, June 1-4
- Tuesdays, noon-2 p.m., June 9-July 28
- Monday-Thursday, noon-4 p.m., June 22-25
- Monday-Thursday, 3-5 p.m., July 13-23
- Mondays and Wednesdays, 6-8 p.m., July 15-Aug. 10
- Monday-Thursday, noon-2 p.m., July 20-30
- Monday-Thursday, 9-11 a.m., July 27-Aug. 6

GRE Strategy Workshop

Course Fee: FREE
Wednesdays, 8-9 p.m.
Three Sessions Available:

- May 27
- June 24
- July 22

GRE Live Online Prep Course

Course Fee: \$799
Five Sessions Available

- Tuesdays, noon-3 p.m., June 2-July 21
- Mondays and Wednesdays, 6-9 p.m., June 3-29
- Sundays, 2-5 p.m., July 12-Aug. 30
- Mondays and Wednesdays, 7-10 p.m., July 15-Aug. 10
- Tuesdays and Thursdays, 6-9 p.m., Aug. 4-27

GMAT Strategy Workshop

Course Fee: FREE
• Wednesday, 8-9 p.m., Aug. 26

GMAT Live - Online Prep Course

Course Fee: \$899
• Tuesdays and Thursdays, 6-9 p.m., July 14-30

LSAT Strategy Workshop

Course Fee: FREE
Wednesdays, 8-9 p.m.
Three Sessions Available:

- June 3
- July 8
- Aug. 5

LSAT Prep Course

Course Fee: \$899
Two Sessions Available:

- Sundays, 5-8 p.m., June 14-Aug. 23
- Mondays and Wednesdays, noon-3 p.m., June 17-July 22

PROFESSIONAL DEVELOPMENT



siue.edu/professional

PROFESSIONAL DEVELOPMENT



GRANT PROCESSES FOR NOVICES

Grant writing can be daunting. Join us as we learn how to navigate grant writing, with our presenters who have spent multiple years in grant administration and successfully obtained a variety of local, state, and federal grants. Attend as many sessions as you would like or attend them all for a discounted rate of \$169.

Grant Writing for Novices

Gain an overview of the four types of grants and the common elements found in grant proposals. Funding sources for each type will be reviewed, and various elements of proposals will be discussed in detail.

Course Fee: \$49*
Monday, 5:30-7:30 p.m., June 1
SIUE Edwardsville Campus

Grant Funding for Novices

We'll review websites and various search strategies to locate external funding opportunities. You will explore various opportunities and websites to identify potential funding sources in your areas of interest.

Course Fee: \$49*
Tuesday, 5:30-7:30 p.m., June 2
SIUE Edwardsville Campus

Grant Budget Opportunity Interpretation for Novices

Join us in analyzing critical portions in funding opportunity announcements. You are welcome to bring specific questions related to funding opportunities you wish to pursue.

Course Fee: \$49*
Tuesday, 5:30-7:30 p.m., June 8
SIUE Edwardsville Campus

Grant Budget Preparation for Novices

In this course, you will gain an overview of the budget development process and have an opportunity to develop a mock budget from a provided case study. You are welcome to bring specific questions related to the budgets of the funding opportunities you wish to pursue.

Course Fee: \$49*
Tuesday, 5:30-7:30 p.m., June 9
SIUE Edwardsville Campus

ONLINE BACHELOR'S DEGREES AND POST-BACCALAUREATE CERTIFICATES

Advance your career and improve your quality of life with a bachelor's degree or post-baccalaureate certificate from SIUE. SIUE offers flexible, accelerated, fully online degree programs and post-baccalaureate certificates to fit the needs of adult learners like you. We offer condensed course terms and flexible entry points throughout the year.

SIUE holds the same accreditations as many of the nation's most prestigious schools. Our online courses are held to the same high academic standards and are taught by the same highly qualified faculty who teach in SIUE classrooms. You'll learn in a supportive, online environment that is focused on preparing you to accomplish your career goals without sacrificing personal, family, and professional commitments.

Online Bachelor's Degree Programs

Whether you have 18 credit hours or an associate degree, a bachelor's degree is within your reach.

Accountancy

Applied Communications Studies, Public Relations

Business Administration

- Business Administration
- Data Analytics
- Economics
- Human Resources
- Management
- Marketing
- Supply Chain Management

Criminal Justice Studies

Integrative Studies, Leadership in Organizations

Psychology

RN to BS in Nursing

Online General Education Path

Post-Baccalaureate Certificates

Post-baccalaureate certificates allow working professionals to gain additional skills by taking 3-5 credit-bearing courses.

Athletics Leadership

For individuals planning to or currently working in athletics at the college or high school levels

Data Science

For mathematicians and statisticians

Digital Media Literacy

For educators, librarians, and media professionals

Emerging Technologies

For P-12 school personnel

Instructional Design

For organizational training personnel

Online Teaching and Learning

For educators, corporate training personnel, and college instructors

Professional Leadership Strategies

For future leaders in public and nonprofit sectors

Supply Chain Management

For logistics, transportation, and warehousing personnel

Total Quality Management

For engineers, quality specialists, and project managers

Taxation*

For individuals interested in public accounting, tax positions, and other tax-related careers

**On-campus program; all other certificate programs listed are fully online.*

WORKFORCE INNOVATION OPPORTUNITY ACT PROGRAM



Unemployed? Underemployed?

SIUE serves students through the Workforce Innovation and Opportunity Act (WIOA) Program.

SIUE works regularly with county and state employment and training agencies to help match eligible students with funding. Individuals who are unemployed, underemployed, or experiencing financial hardship may be eligible for support to complete their educational programs. Students must be seeking a credential in a high-demand employment field, be within two years or less of completing their degree, and meet local workforce criteria to qualify.

If you are seeking employment in an in-demand field and are interested in learning more about funding opportunities that will help you complete an SIUE program, please contact us at outreach@siue.edu or reach out directly to your county provider:

- Madison County Employment and Training Department (Bond, Jersey, Madison and Calhoun Counties), 618-296-4301
- St. Clair County Intergovernmental Grants Department Workforce Development Group (St. Clair, Monroe, Randolph, Clinton and Washington Counties), 618-825-3259
- siue.edu/financial-aid/wioa



Get started today!

Contact Online Student Services
online@siue.edu | 618-650-5832
siue.edu/online

ONLINE CERTIFICATE OPPORTUNITIES

Boost your productivity and skill set with these convenient and engaging online non-credit courses from Learning Resources Network's UGotClass® program. Participate any time on any computer to learn from expert instructors. Register for the certificate option of any course grouping and attend all courses in the group for a discounted rate. Certificate administered by UGotClass®. Registration and course deadlines same as individual courses.



Podcasting

Businesses are turning to podcasting to grow their brand and connect with customers. People with a niche hobby are turning podcasts into a business. Learn how to take your business or hobby and turn it into a podcast. This step-by-step class will take you from start to finish and cover the required elements needed to get your show online. Come to class with your idea and end with your show online for all to hear.

Course/Certificate Fee: \$245
Available Online Only: June 1-26

PODCASTING CERTIFICATE

Certificate administered by UGotClass® upon completion of Podcasting course.

Keys to Customer Service

Learning to build your customer service skills will have a powerful impact on your career success, as well as success in other areas of life. Through this course, you will discover the direct relationship between service skills and career achievement.

Course Fee: \$145
Available Online Only: June 1-26

Extraordinary Customer Service

Transform your customer service into something extraordinary. As a result, more repeat business will improve your bottom line. Extraordinary customer service comes from focusing on the essential elements that yield big results.

Course Fee: \$145
Available Online Only: July 6-31

CUSTOMER SERVICE CERTIFICATE

Register for the certificate option and receive a discounted rate for both Customer Service courses. Certificate administered by UGotClass®.

Certificate Fee: \$245

Introduction to Power BI

Gain insights into your data! Power BI (business intelligence) is a widely-used business analytics service offered by Microsoft. Power BI Desktop is a complete data analysis and report creation tool that you install for free. In this course, you will discover how to quickly extract, transform, and load data with just a few clicks. You will create interactive visualizations (charts, maps, KPIs) to provide you with insights into your company's data to make informed decisions.

Course Fee: \$195
Available Online Only: June 1-26

Intermediate Power BI

Delve further into Power Query to ETL (Extract, Transform and Load) your data. Build the Data Model using modeling features and relationships. Perform calculations using Data Analysis Expressions (DAX) functions. Utilize Time Intelligence functions to view YoY or YTD reports. Add user-friendly features to enhance your reports.

Course Fee: \$195
Available Online Only: July 6-31

Introduction to Six Sigma Green Belt

This challenging introduction to Six Sigma Green Belt course teaches critical skills required for Six Sigma practitioners. This first course in the certificate program explains the basic terms and proven Six Sigma problem-solving methods, team building tools, and descriptive statistics that are the basis for the statistical tools contributing to improvement of projects and the overall success of your organization.

Course Fee: \$195
Available Online Only: June 1-26

Intermediate Six Sigma Green Belt

Organizations depend on the measurement and analysis of performance to make key decisions that affect the organization. This course builds on the ideas and skills learned in the introduction to Six Sigma Green Belt course that organizations, specifically their Six Sigma teams, use to improve. You will learn process analysis, data collection and analysis, probability and valid statistical conclusions, and hypothesis testing.

Course Fee: \$195
Available Online Only: July 7-31



Advanced Power BI

Expand your knowledge of Power BI Desktop to the highest level. This course focuses on the advanced capabilities of Power Query, Data Modeling, and Reports. Check for data inconsistencies, design efficient queries, create proper relationships, and write DAX code to ensure reports update quickly and accurately. Add navigation and analytical features to your reports to enable consumers to analyze the results.

Course Fee: \$195
Available Online Only: Aug. 3-28

POWER BI CERTIFICATE

Register for the certificate option and receive a discounted rate for all three Power BI courses. Certificate administered by UGotClass®.

Certificate Fee: \$495

Advanced Six Sigma Green Belt

This final course teaches participants to improve and control processes. Topics included in this course include hypothesis-testing, design of experiments, and statistical process control. The instructor will share many handouts, spreadsheets, and web links that have tools participants will use while completing Six Sigma projects.

Course Fee: \$195
Available Online Only: Aug. 3-28

SIX SIGMA GREEN BELT CERTIFICATE

Register for the certificate option and receive all three of the Six Sigma courses for a discounted rate. Certificate administered by UGotClass®.

Certificate Fee: \$495



ONLINE CERTIFICATE OPPORTUNITIES (CONT.)



Adobe Illustrator Essentials

Adobe Illustrator is the industry standard computer illustration software. Use Illustrator to draw shapes and design logos, flyers, posters, banners, business cards, or any other vector graphics for print or web. In this course, you will learn Adobe Illustrator fundamentals to set up a print document and use various tools to draw, type, and color all kinds of shapes and illustrations. Learn how to efficiently manage layers and artboards, and create print-ready PDF documents. Access to Adobe Illustrator software required.

Course Fee: \$225
Available Online Only: June 1-26

Adobe Photoshop Essentials

This fundamental course covers Adobe Photoshop CC most commonly used tools, menus and panels. You'll learn all the basics of Photoshop to effectively work with selection and editing tools, layers and masks to edit, retouch and enhance existing images or create your own composite digital art work. Impress your business organization, friends and family by enhancing their photos and create magazine cover quality enhanced images. Access to Adobe Photoshop software required.

Course Fee: \$225
Available Online Only: July 7-31

Adobe InDesign Essentials

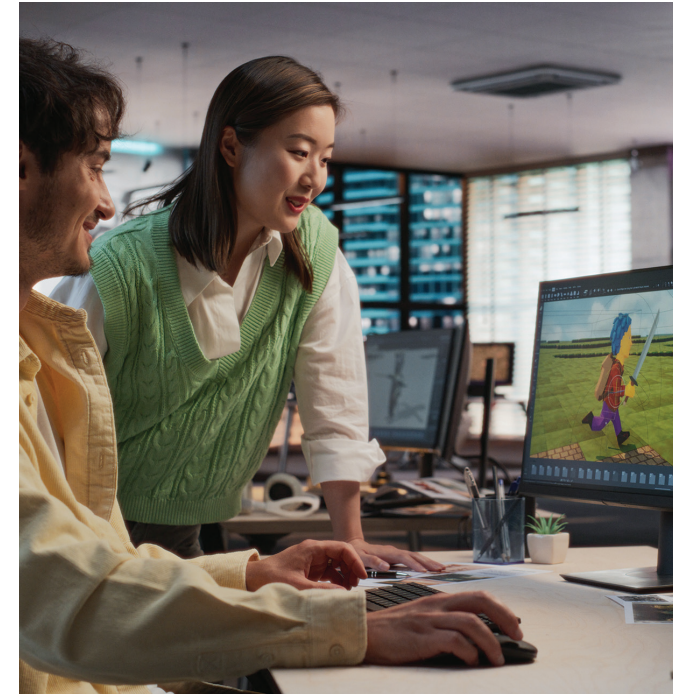
Adobe InDesign is the industry standard page-layout program that works with Adobe Illustrator and Photoshop seamlessly. InDesign allows you to create simple to complex multi-page documents such as brochures, flyers, books, and magazines. This course is a comprehensive exploration of InDesign tools and capabilities to create professional documents. You will learn how to manage the InDesign environment and create, setup, design, enhance, and finalize multi-page documents. Access to Adobe InDesign software required.

Course Fee: \$225
Available Online Only: Aug. 3-28

GRAPHIC DESIGN SOFTWARE ESSENTIALS CERTIFICATE

Register for the certificate option and receive all of the graphic design essentials courses for a discounted rate. Certificate administered by UGotClass®.

Certificate Fee: \$545



Introduction to Game Design

Games are increasingly recognized as a tool that can serve many business purposes beyond entertainment. This course provides a general introduction to what goes into the design and development of both video and analog games, with a particular focus on the use of games outside of consumer entertainment.

Course Fee: \$245
Available Online Only: June 1-26

Intermediate Video Game Design

Mobile games are the fastest-growing segment of the market as more and more people play casual games. In this intermediate course, you will learn the basics of video game design process, learn about the main video game genres, and use a game development application to begin your journey of making games.

Course Fee: \$245
Available Online Only: July 6-31

BASIC GAME DESIGN CERTIFICATE

Register for the certificate option and receive both of the Game Design courses for a discounted rate. Certificate administered by UGotClass®.

Certificate Fee: \$395



Returning! Introduction to SQL

Learn how to write SQL code to create and populate database tables and how to write simple SQL queries that can retrieve vast amounts of information from a database. You will discover the power of the relational database, learn how to create and manage database tables, and use SQL SELECT statements to pinpoint and retrieve data from a database.

Course Fee: \$245
Available Online Only: June, July, or August

Returning! Intermediate SQL

Discover how to write powerful SQL queries that enable you to retrieve data from one table or from multiple tables stored in the database simultaneously. You will learn how to merge data from multiple columns, create calculated fields, and order and group the results from a query. You will also learn how to create a single join query or subquery to obtain data from multiple tables simultaneously.

Course Fee: \$245
Available Online Only: Aug. 3-28

Returning! Advanced SQL

Take your SQL query skills to a new level. In this course, you will learn how to write advanced subqueries, advanced join queries and UNION queries that query more than one table. Learn how to use transaction processing to ensure SQL statements are executed completely or not at all and how to create stored procedures to store SQL statements for execution.

Course Fee: \$245
Available Online Only: Aug. 3-28

SQL CERTIFICATE

Register for the certificate option and receive a discounted rate for all three SQL courses. Certificate administered by UGotClass®.

Certificate Fee: \$595

ONLINE CERTIFICATE OPPORTUNITIES (CONT.)



Artificial Intelligence

Gain a competitive edge with artificial intelligence (AI) by mastering core concepts and practical techniques. Discover how AI can cut costs, improve efficiency, reduce errors, automate tasks, and free staff for higher-priority work. Learn to develop a workplace AI plan and strategy and leave with the knowledge and confidence to help lead your organization into this rapidly growing field.

Introduction to ChatGPT

Discover the power of AI with ChatGPT, the fastest-growing app in history. In this course, you'll learn how AI tools boost productivity, streamline tasks, and give you a competitive edge. Whether you're an experienced professional or just starting out, you'll gain practical skills to harness AI and achieve your goals faster.

Course Fee: \$195
Available Online Only: June 1-26

Intermediate AI

Dive deeper into the fascinating world of AI. Explore machine learning algorithms, natural language processing, and neural networks while gaining hands-on experience with popular AI frameworks and tools. Take your AI expertise to the next level!

Course Fee: \$245
Available Online Only: July 6-31

AI Planning and Strategies

Develop effective AI strategies to solve complex problems across various industries. Gain practical insights into how AI can be harnessed to enhance efficiency and drive innovation. By the end of the course, you will have the skills to create robust AI planning solutions that can adapt to dynamic environments and meet organizational goals.

Course Fee: \$195
Available Online Only: Aug. 3-28

ARTIFICIAL INTELLIGENCE CERTIFICATE

Register for the certificate option and receive a discounted rate for all three AI courses. Certificate administered by UGotClass®.

Certificate Fee: \$495

Beginning Conversational Spanish

Designed for beginners, this course will have you speaking and reading Spanish in no time. You will practice the basic building blocks of the language and common idiomatic expressions. You will know enough vocabulary and grammar for simple conversations, and you will learn how to ask and answer questions. Whether you speak some Spanish and need a refresher, or no Spanish, you will complete the course with the skills to communicate in Spanish.

Course/Certificate Fee: \$290
Available Online Only: June 1-July 31

BEGINNING CONVERSATIONAL SPANISH CERTIFICATE

Certificate administered by UGotClass® upon completion of Beginning Conversational Spanish course.

New! Spanish for Medical Professionals

Designed for healthcare professionals, this Spanish course helps bridge communication gaps with Spanish-speaking patients and their families. Whether you are a beginner or just need a refresher, you will learn practical language skills and essential medical vocabulary and gain cultural insights to support quality care and confident communication. Students will be required to purchase a textbook.

Course/Certificate Fee: \$290
Available Online Only: June 1-July 31

SPANISH FOR MEDICAL PROFESSIONALS CERTIFICATE

Certificate administered by UGotClass® upon completion of Spanish for Medical Professionals..

Understanding Debits and Credits

In this course, you will learn about the accounting equation and the five categories involved in every business: assets, liabilities, owner's equity, revenue and expenses. Every financial transaction falls into one or more of these categories. Learn how to create a chart of accounts that meet the needs of your business. You will learn how double entry bookkeeping works and the process of recording debits and credits. This course will show you how to identify, analyze and record transactions using journal entries under the cash basis accounting method.

Course Fee: \$195
Available Online Only: July 6-31

General Ledger and Month End Procedures

In this course, you will learn how to post journal entries to the correct general ledger accounts impacted by each transaction. This course will show you how to make sure your general ledger balances at the end of each month by preparing an unadjusted trial balance. You will learn how to look for errors when you don't balance and how to determine to correct entries. After posting correcting entries and/or adjusting entries, you will verify debits and credits equal with an adjusted trial balance. This course also goes through the steps of performing monthly bank reconciliations.

Course Fee: \$195
Available Online Only: July 6-31

Closing Procedures and Financial Statements

This course shows you how to create a worksheet used to adjust account balances and prepare financial statements. Use your financial statements to measure performance, make improvements and set goals. The final step covered in this course is closing your books and preparing them for the next accounting period; this is done by journalizing and posting closing entries.

Course Fee: \$195
Available Online Only: July 6-31

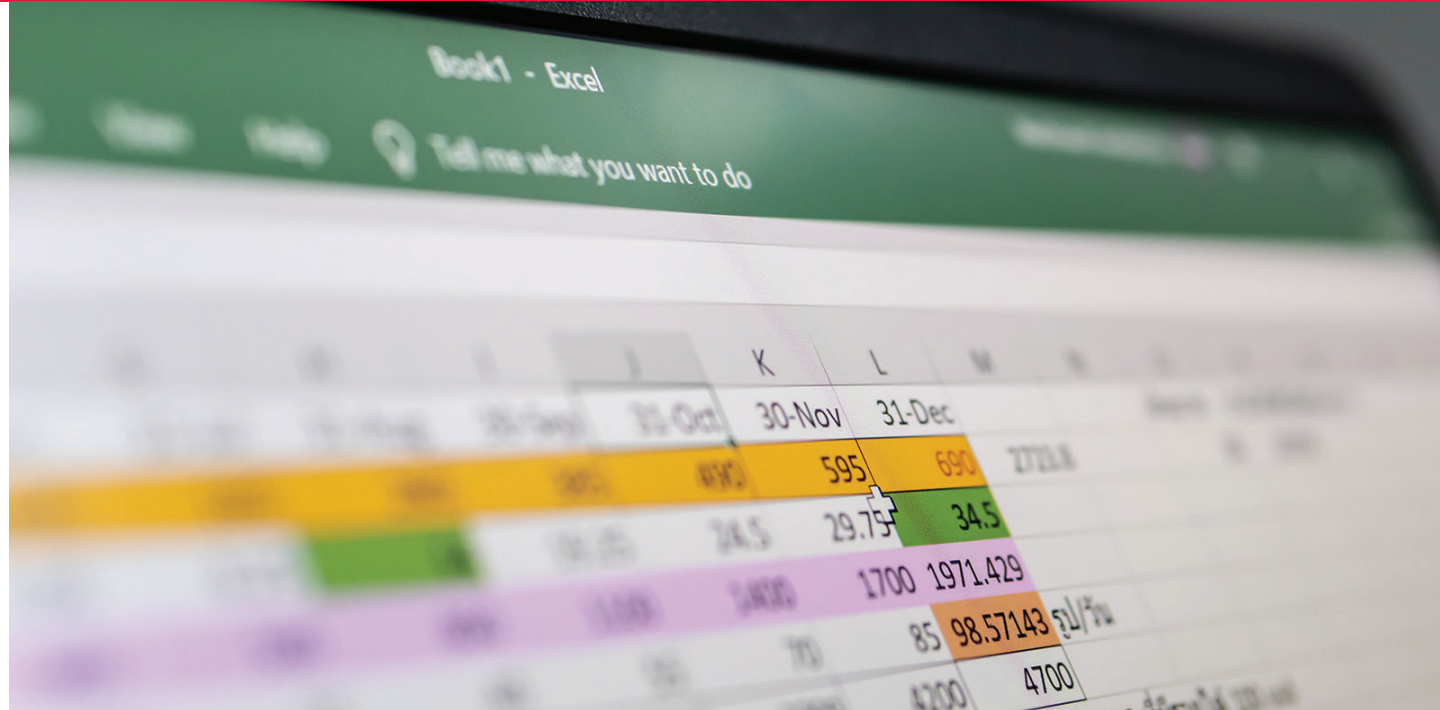
BOOKKEEPING CERTIFICATE

Register for the certificate option and receive a discounted rate for all three Bookkeeping courses. Certificate administered by UGotClass®.

Certificate Fee: \$495



ONLINE CERTIFICATE OPPORTUNITIES (CONT.)



Mastering Microsoft Excel

A must-have skill to succeed in business, whether an entrepreneur or a valued employee, is the ability to create, edit, and manage spreadsheets. Examine the life of an Excel worksheet and workbook, from creation to presentation. Learn how an Excel worksheet is constructed, populated with content and edited for delivery. Master the options that can take your Excel worksheet from plain, drab numbers to exciting and engaging multimedia.

Course Fee: \$195
Available Online Only: June 1-26

Intermediate Excel

Have you ever wondered why Excel is one of the most powerful applications used today by many businesses? This course will help you increase your efficiency by learning how to organize, display, and calculate your data into useful information. Find out how you can consolidate your data proficiently into readable rows and columns using different table designs and styles. Create a unique style for yourself to improve your spreadsheet appearance to make the content easier to understand for your target audience. Discover how easily pivot tables can be created to quickly summarize large amounts of data.

Course Fee: \$195
Available Online Only: July 6-31

Advanced Excel

We are faced with different types of business decisions each day that can change the data we work with along with our financial outcomes. Advanced Excel contains tools that can help you prepare your worksheets accurately, examine your data for authentication, and find those answers to your most difficult questions. Save time for yourself by protecting your valuable data and know with assurance that the entered data is accurate without any errors. Discover how to attractively visualize your data into meaningful information with confidence.

Course Fee: \$195
Available Online Only: Aug. 3-28

CERTIFICATE IN MASTERING EXCEL

Register for the certificate option and receive all three of the Excel courses for a discounted rate. Certificate administered by UGotClass®.

Certificate Fee: \$495

New! Advanced Excel Functions

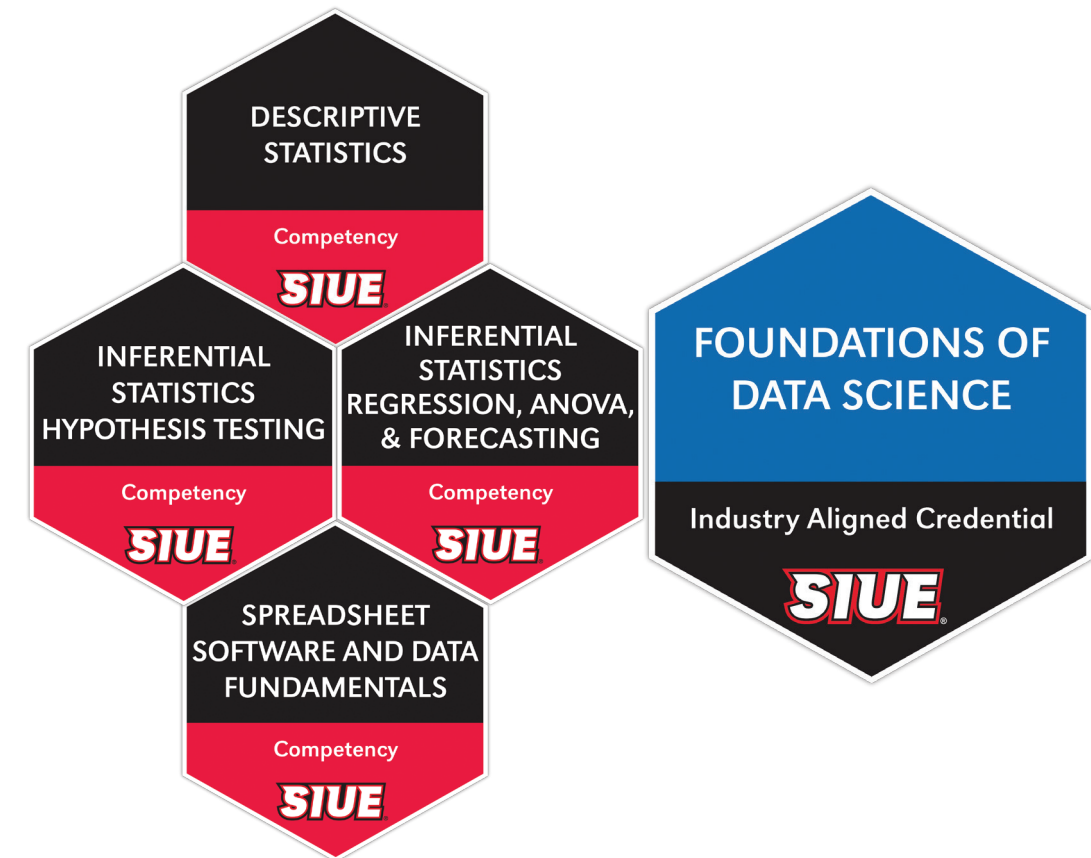
Go beyond what others know and take your Excel skills to the next level. This course equips you with advanced functions to efficiently analyze and manipulate data. Explore the advantages of these functions in various contexts to enhance your productivity and data insights.

Course Fee: \$245
Available Online Only: June 1-26

INDUSTRY-ALIGNED CREDENTIALS THAT CAN LEAD DIRECTLY TO JOBS

Certain professional development and educational offerings at SIUE may offer learners the opportunity to earn a corresponding alternative digital credential to demonstrate their competency in or mastery of a given topic. SIUE's alternative digital credentials can be shared via social media, LinkedIn, personal websites, and other electronic formats. Alternative digital credentials enhance an individual's employment competitiveness by highlighting and defining their abilities relative to in-demand skills in their field or related skills that contribute to an employee's overall ability to thrive and adapt in a changing workplace. Only learners who successfully demonstrate the required competencies as defined in the course rubric will earn the alternative digital credential.

Contact altcredentials@siue.edu for more information.



Foundations of Data Science

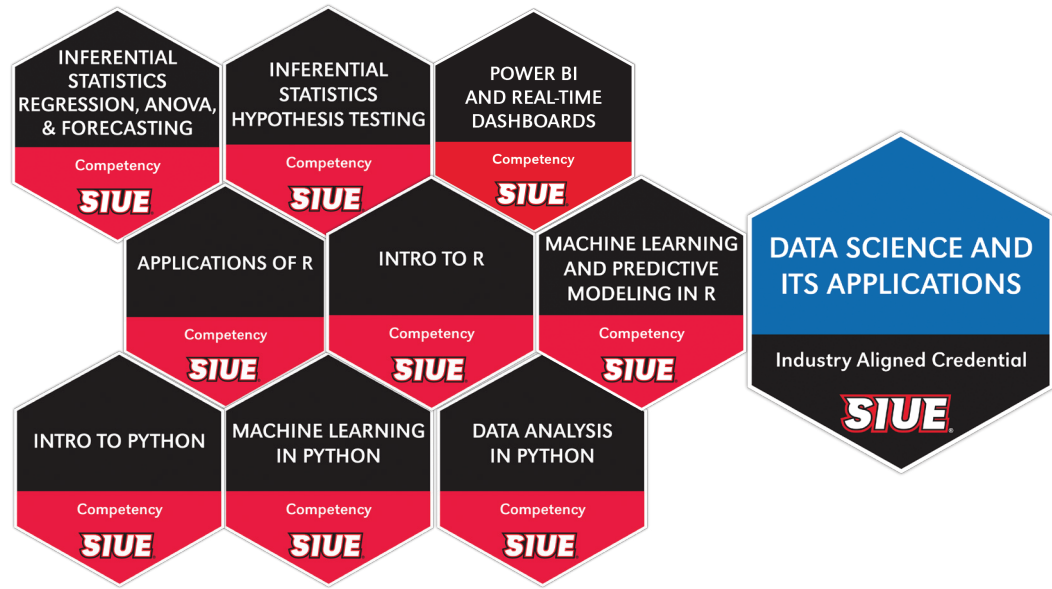
The Foundations of Data Science industry-aligned credential is awarded to earners who successfully complete Spreadsheet Software and Data Fundamentals; Descriptive Statistics; Inferential Statistics-Hypothesis Testing; and Inferential Statistics-Regression, ANOVA and Forecasting.

Course Fee for all four credentials: \$1,500
Course Fee for individual credentials:

- Spreadsheet Software and Data Fundamentals \$200
- Descriptive Stats: \$300
- Probability Theory, Inferential Statistics and Hypothesis Testing: \$400
- Inferential Statistics-Regression, ANOVA and Forecasting: \$600

 Rolling Enrollment
Online

INDUSTRY-ALIGNED CREDENTIALS (CONT.)



Data Science and Its Applications

The Data Science and Its Applications industry-aligned credential is awarded to earners who successfully complete Inferential Statistics-Hypothesis Testing; Inferential Statistics-Regression, ANOVA and Forecasting; Power BI and Real-time Dashboards; Intro to R; Applications of R; Machine Learning and Predictive Modeling in R; Intro to Python; Data Analysis in Python; and Machine Learning in Python.

9 credentials for the Data Science and Its Applications collection: \$3,700

Course Fee for individual credentials:

- Power BI and Real-Time Dashboards: \$300
- Intro to R: \$300
- Applications of R: \$300
- Intro to Python: \$300
- Data Analysis in Python: \$300
- Machine Learning and Predictive Modeling in R: \$600
- Machine Learning in Python: \$600

Rolling Enrollment
Online

21st Century Digital Citizenry

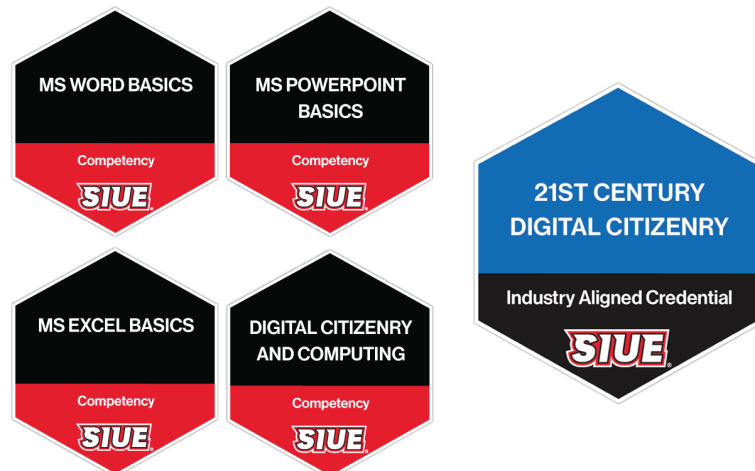
The 21st Century Digital Citizenry credential provides learners with a comprehensive foundation in essential digital skills, combining four key areas: computing fundamentals, word processing, data management, and digital presentation. Participants will gain practical knowledge of modern technology and its professional applications, including computer hardware and software, digital communication, cybersecurity, cloud computing, and artificial intelligence. Through hands-on training in Microsoft Word, Excel, and PowerPoint, learners will build proficiency in creating documents, managing data, and designing effective presentations.

Course Fee for all four credentials: \$225

Course Fee for individual credentials:

- Digital Citizenry and Computing: \$29
- MS Word Basics: \$59
- MS Excel Basics: \$99
- MS PowerPoint Basics: \$59

Rolling Enrollment
Online



Interpersonal Communications

The Interpersonal Communication credential is a valuable asset for professionals across careers. The curriculum provides training in message formation and delivery, listening, perception, awareness of verbal and nonverbal codes, and managing conflict. Competency is assessed via quizzes. Learners who complete this credential have demonstrated knowledge and familiarity with the principles and practices of interpersonal communication. For learners with three or more years of valid work or volunteer experience where interpersonal communication is an essential and significant part of the role, this digital credential may be used as credit for prior learning at SIUE.

Course Fee: \$25 for each individual credential, \$149 for the series
Rolling Enrollment
Online



Public Speaking

The Public Speaking credential is awarded to learners who successfully complete the following modules: audience analysis, ethics and public speaking, informative speeches, introductions and conclusions in public speaking, listening in public, persuasive speeches, speaking with confidence, special occasion speeches, speech delivery, and supporting your ideas in public speaking. For learners with three or more years of valid work or volunteer experience where public speaking is an essential and significant part of the role, this digital credential may be used as credit for prior learning at SIUE.

Course Fee: \$189
Rolling Enrollment
Online



Custom Training Options for Regional Employers

SIUE's alternative digital credential offerings can be customized to meet your business's specific training requirements, including options for the development of new courses and modules. Financial support for training costs may be available. To learn more about how our faculty and staff can help your organization train, retain, and upskill your workforce, please contact altcredentials@siue.edu for more information.

CONTINUING EDUCATION FOR LICENSED PROFESSIONALS

siue.edu/professional

SIUE is an approved CEU provider by the State of Illinois for Social Work continuing education. If you are licensed/certified in any other state or province, please refer to the regulations in that state/province or the national board requirements to determine whether this will qualify for CEU credits.



Social Work Conference: Cultural Trauma

Those who attend this social work conference are eligible to receive 4 CEU credits. For a full list of topics, speakers, and additional conference details, please visit our online registration page at <https://www.enrole.com/siue/>

Conference Fees:
CEU Fee: \$35
Without CEU \$15
Friday, 8 a.m.-noon, July 24
Online via Zoom

Computer-Aided Design Courses

Courses are offered on a continuous basis in 10-week cycles online via Zoom. Please check the website for the most up-to-date information. All courses are three credits unless otherwise stated. Must complete introduction course to participate in the intermediate course.

CATIA V5 Intro:
Introduction to Solid and Assembly Modeling
Course Fee: \$3,311

CATIA V5 Intermediate:
Advanced Design and Assembly Management
Course Fee: \$4,425*

NX11 Intro:
Introduction to Solid and Assembly Modeling
Course Fee: \$3,311

NX11 Intermediate:
Advanced Design and Assembly Management
Course Fee: \$3,311

EDUCARD

Do you want the opportunity to explore possibilities of professional growth or personal enrichment in an economical and flexible way?

If you answered "Yes," we invite you to sit in on regular classes at SIUE through our Educard Program. Educard is a special community program that allows you to attend selected credit classes offered by SIUE. It provides an opportunity for you to sample the subjects that interest you most. Anyone who is not currently enrolled for credit in the University is eligible for Educard. High school students are eligible and may take up to three classes.

Which classes are approved for Educard participation?

For a full list of classes, please visit siue.edu/cougarnet and click "Class Registration," followed by "Browse Course Catalog." Select the upcoming term and search any subject you would like. Classes not offered through Educard are classes with a full enrollment, non-credit courses, travel study, distance education, classes in which a danger may exist, classes requiring prerequisites, and classes where added direct expense may be incurred by the University.

What is not included?

- You will not receive a grade as an Educard participant.
- No official records of your classwork or attendance will be kept; therefore, no transcript is available.
- Since you do not pay normal student welfare and activity fees, you may not participate in student services and activities supported by those fees.

What about textbooks?

Educard participant may borrow textbooks, as available, at no cost through Textbook Service. You may pick up your textbooks after the first week of classes, and you are required to return textbooks to Textbook Service at the end of the term.

What is the fee?

\$60 per class

Register for Educard

- Online: siue.edu/educard
- In person: Rendleman Hall, Room 1330, Monday-Friday, 8 a.m.-4:30 p.m.
- Please do not mail payment

ONLINE SERVICES AND EDUCATIONAL OUTREACH POLICIES

Cancellation/Refund Policy

All cancellation/refund requests must be made in writing and emailed to outreach@siue.edu. Cancellation/refund requests must be received at least five business days prior to the first day of any conference, course or event, unless otherwise specified. A refund, minus a \$15 administrative fee, will be processed as long as the above terms are met. If you have questions regarding this policy, please contact us at 618-650-3210 or outreach@siue.edu.

Parking on Campus

Unless otherwise specified, parking is included in the cost of courses held on weekdays on the SIUE Edwardsville campus. Parking is not included for the Lifelong Learning speaker series. A reduced price is available at checkout for participants who do not need parking or prefer to pay for parking on their own. Parking passes will be emailed to paid registered participants; please provide a valid license plate number to avoid paying additional parking fines. The printed pass must be displayed on the dashboard of the registered vehicle and is valid only during the times of the course. A 30-minute grace period is extended for travel to and from the meeting location.

Accommodations

The Office of Online Services and Educational Outreach is committed to providing universally accessible services and opportunities throughout our programming. If you need assistance or an accommodation, please contact our office: 618-650-3210, outreach@siue.edu or by mail (Online Services and Educational Outreach, Box 1084, Edwardsville, IL 62026) upon registration and/or at least three days prior to the offering to allow us time to accommodate your needs.

SOUTHERN ILLINOIS UNIVERSITY EDWARDSVILLE

Office of Online Services and Educational Outreach
Rendleman Hall
P.O. Box 1084
Edwardsville, IL

NON-PROFIT
ORGANIZATION
US POSTAGE
PAID
PERMIT 4678
ST LOUIS MO

Payments are accepted in the following ways:



Online:

siue.edu/educational-outreach

See page 2 for detailed registration instructions.



Mail: Send this completed registration form and payment to:

SIUE Office of Online Services and Educational Outreach
Box 1084 | Edwardsville, IL 62026



In Person: Visit us weekdays 8 a.m.-4:30 p.m. in Rendleman Hall, Room 1330



Phone: Call 618-650-3210 and pay using a credit card

Date: _____

Name _____
Last First Middle

Email _____ Phone _____

Address _____
Street City State ZIP

License Plate Number *if parking pass is needed* _____

Non-credit Course: Educard: Lifelong Learning:

Course Title: _____ Fee: _____

Course Title: _____ Fee: _____

Course Title: _____ Fee: _____

Course Title: _____ Fee: _____

Methods of Payment: Cash Check Credit Card



Credit Card _____
Number Expiration Date CVC Signature

Other Information

I would like to teach a course on _____

I would be interested in taking a course on _____

I would like to be added to the email list (Please provide email) _____

I would like to make a donation to the Office of Online Services and Educational Outreach
(Please fill in method of payment above and return to the below address. Thank you for your generosity!)