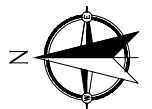
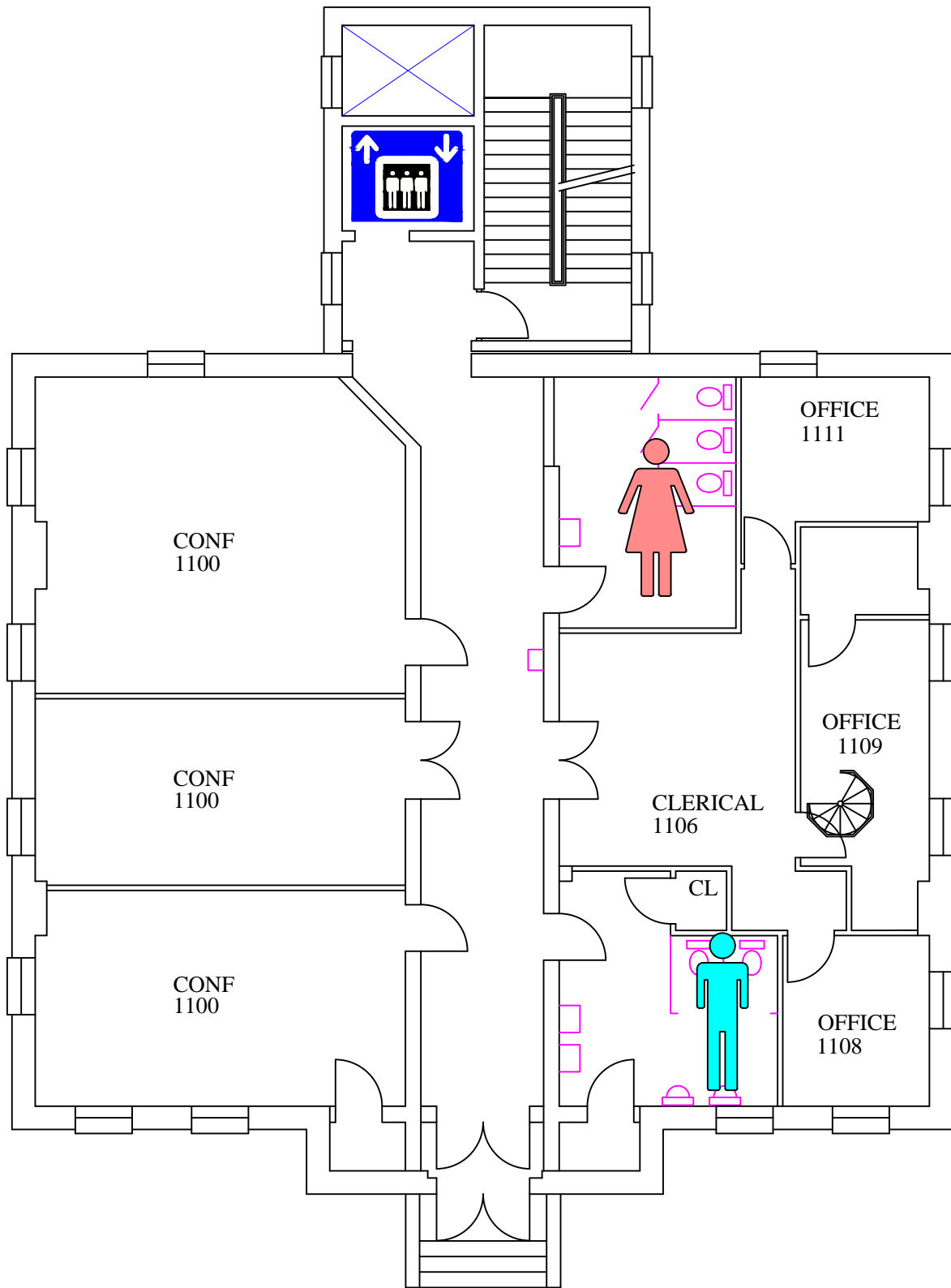


# Lower Level

8280 Center of Professional Advancement

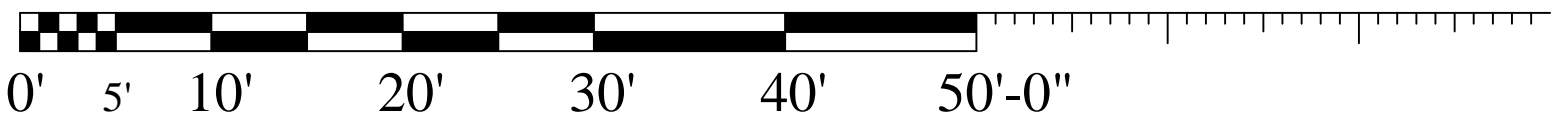


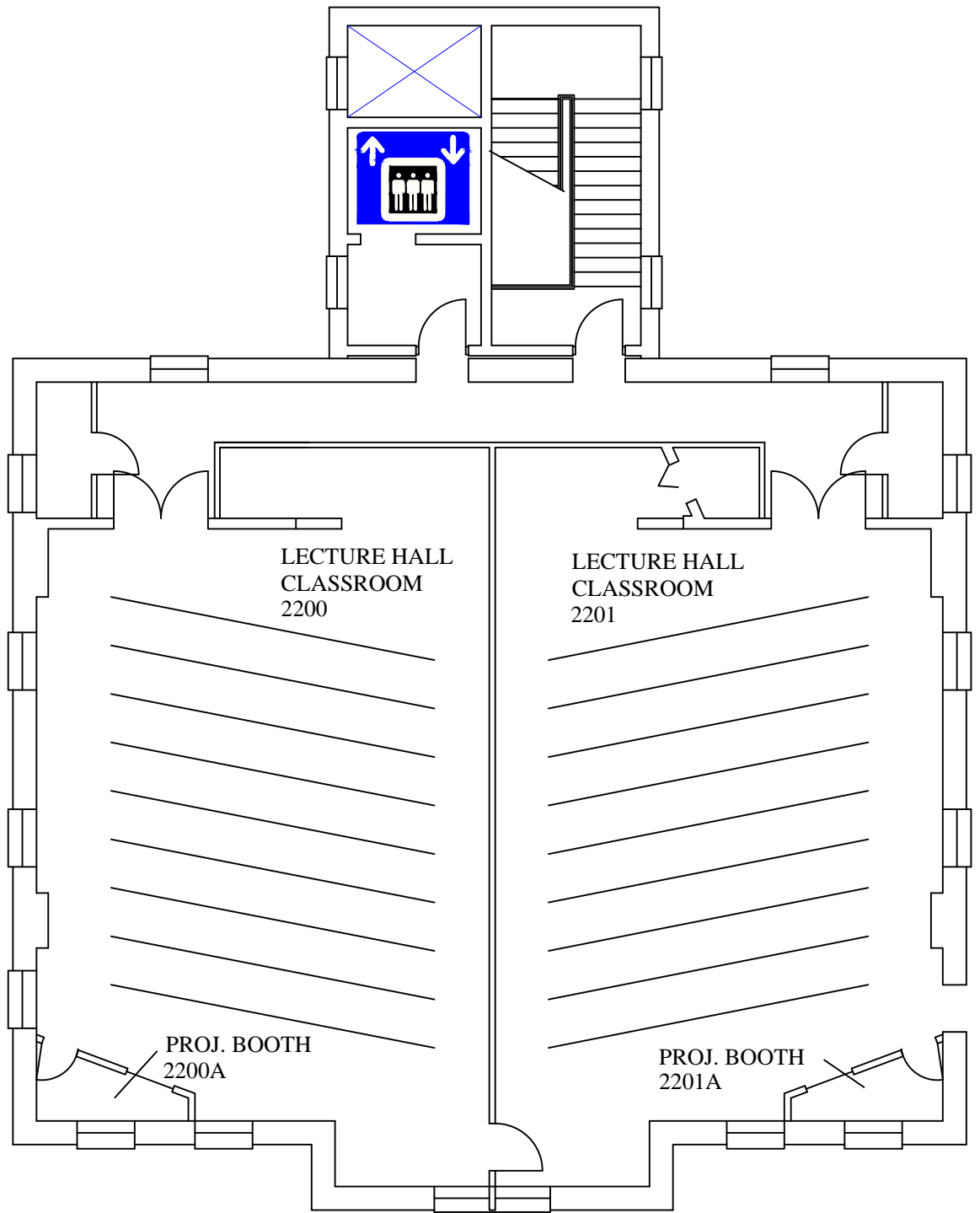
0' 5' 10' 20' 30' 40' 50'-0"



# 1st. Floor

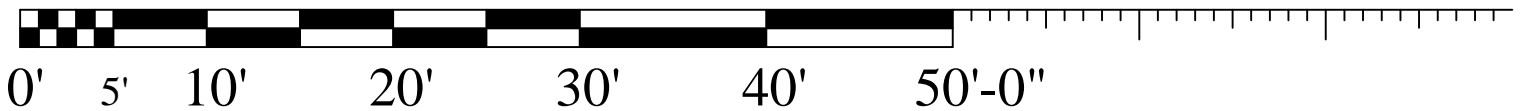
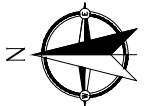
8280 Center of Professional Advancement





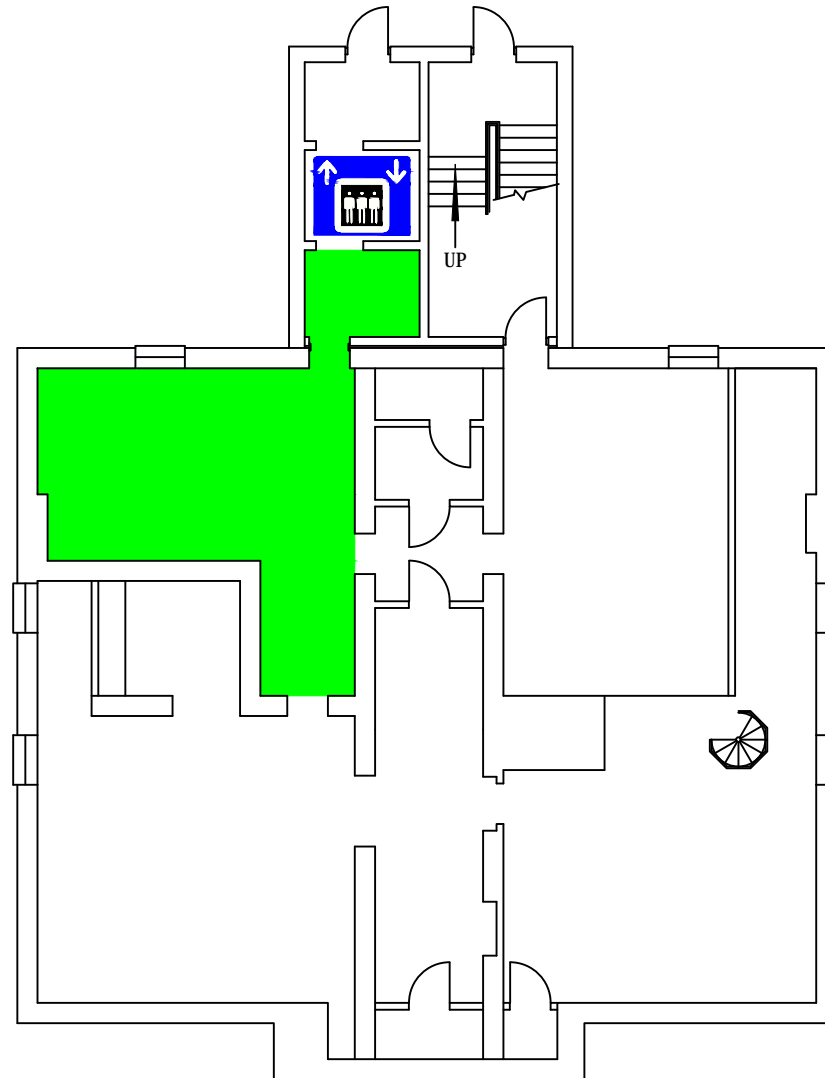
## 2nd Floor

8280 Center of Professional Advancement



# EMERGENCY STORM SHELTERS

In event of a Tornado Warning everyone should go to the **PRIMARY SHELTER**



Lower Level

8280 Center of Professional Advancement

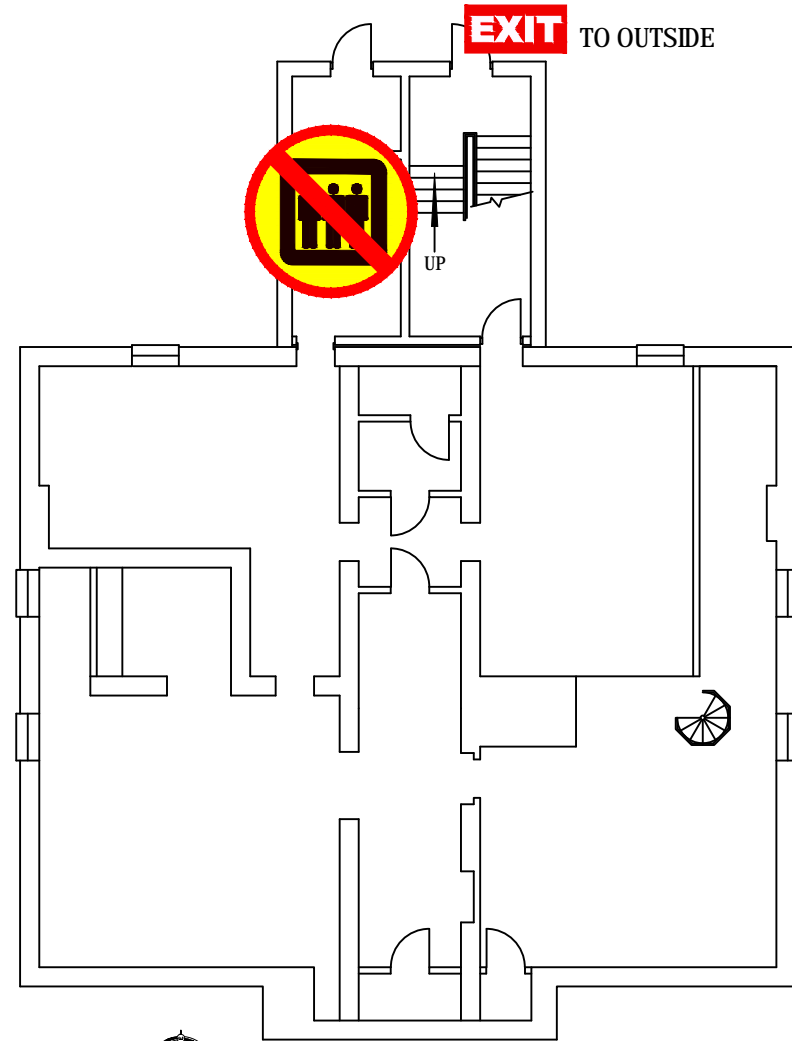


# EMERGENCY EXIT PLAN

**EXIT** IN CASE OF EMERGENCY USE MARKED EXITS **EXIT**

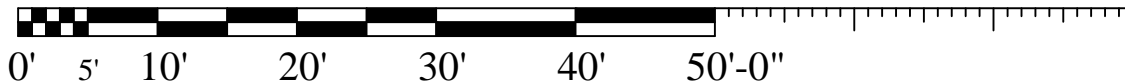
 DO NOT USE ELEVATOR 

 WHEELCHAIR USERS ARE TO GO INTO THE STAIR WELLS **EXIT** AND WAIT FOR EMERGENCY PERSONNEL. 



Lower Level

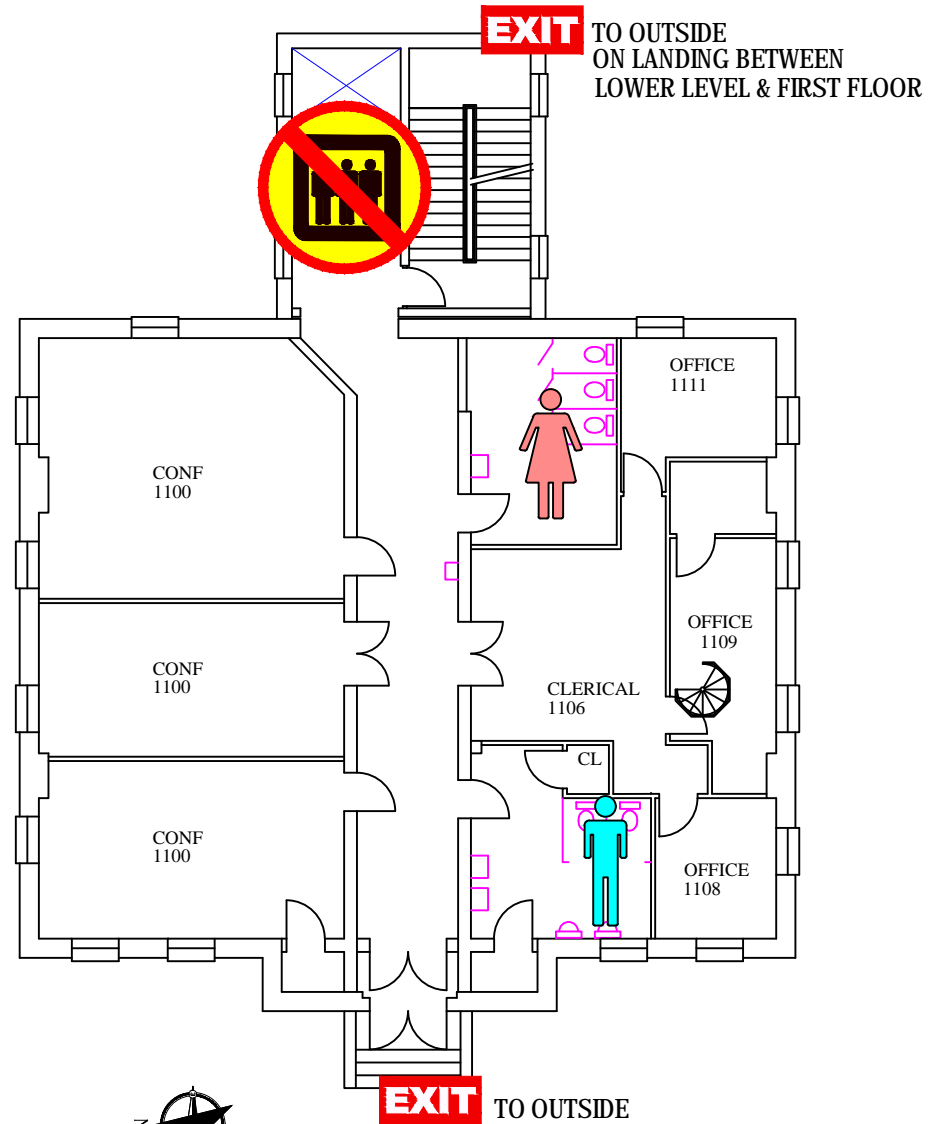
8280 Center of Professional Advancement



# EMERGENCY EXIT PLAN

**EXIT** IN CASE OF EMERGENCY USE MARKED EXITS **EXIT**

 DO NOT USE ELEVATOR 



1st. Floor

8280 Center of Professional Advancement

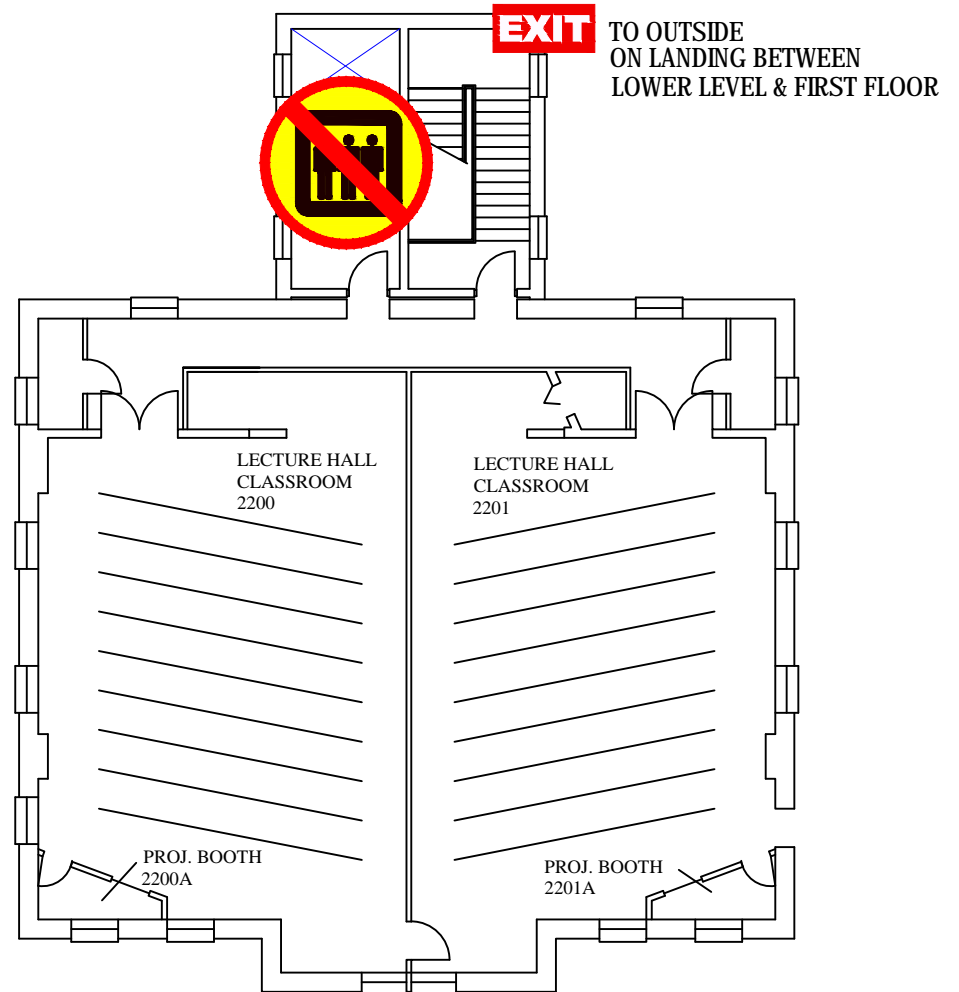


# EMERGENCY EXIT PLAN

**EXIT** IN CASE OF EMERGENCY USE MARKED EXITS **EXIT**

 DO NOT USE ELEVATOR 

 WHEELCHAIR USERS ARE TO GO INTO THE STAIR WELLS **EXIT** AND WAIT FOR EMERGENCY PERSONNEL. 



2nd Floor

8280 Center of Professional Advancement

