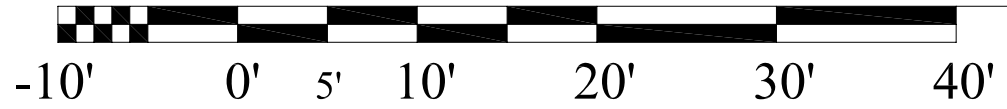
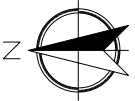
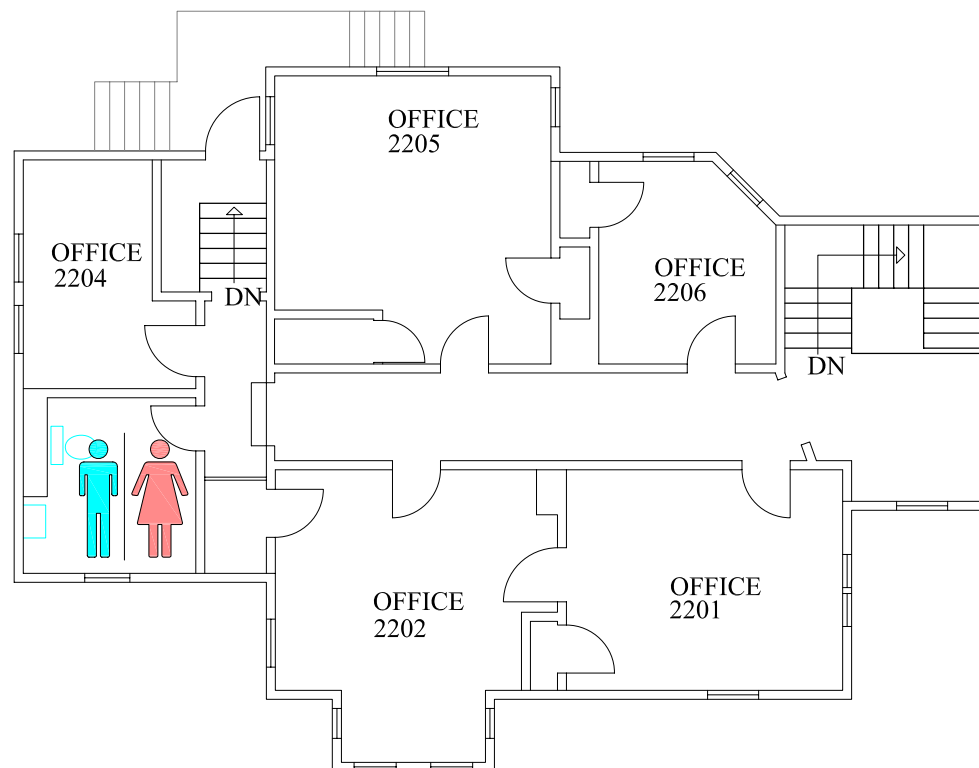


1st. Floor

8286 Department of Growth, Development, and Structure

Section of Behavioral Science, Pediatric Dentistry, Community Preventive Dentistry, Orthodontics, and Anatomy

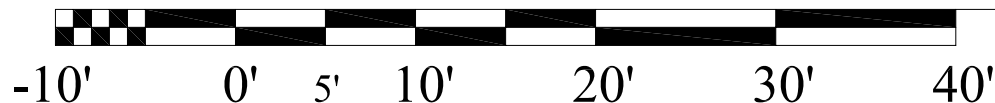
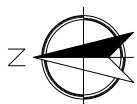




2nd. Floor

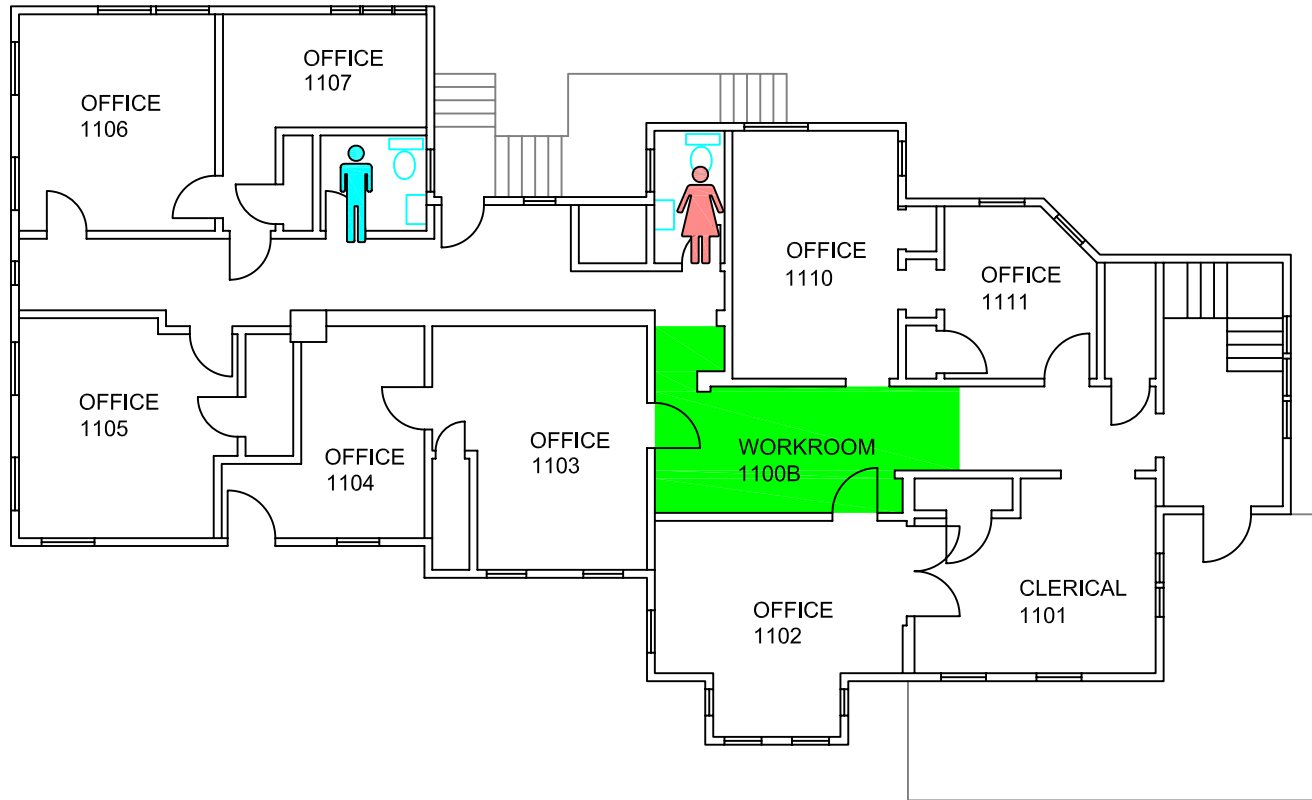
8286 Department of Growth, Development, and Structure

Section of Behavioral Science, Pediatric Dentistry, Community Preventive Dentistry, Orthodontics, and Anatomy



EMERGENCY STORM SHELTERS

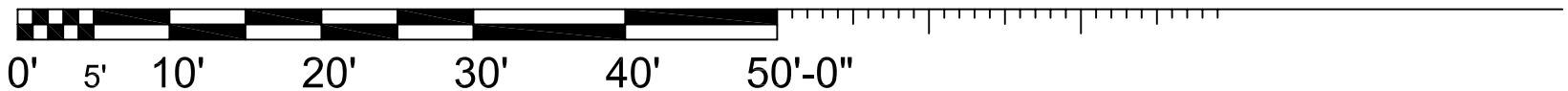
In event of a Tornado Warning everyone should go to the 1st Floor **Primary Storm Shelter**



1st. Floor

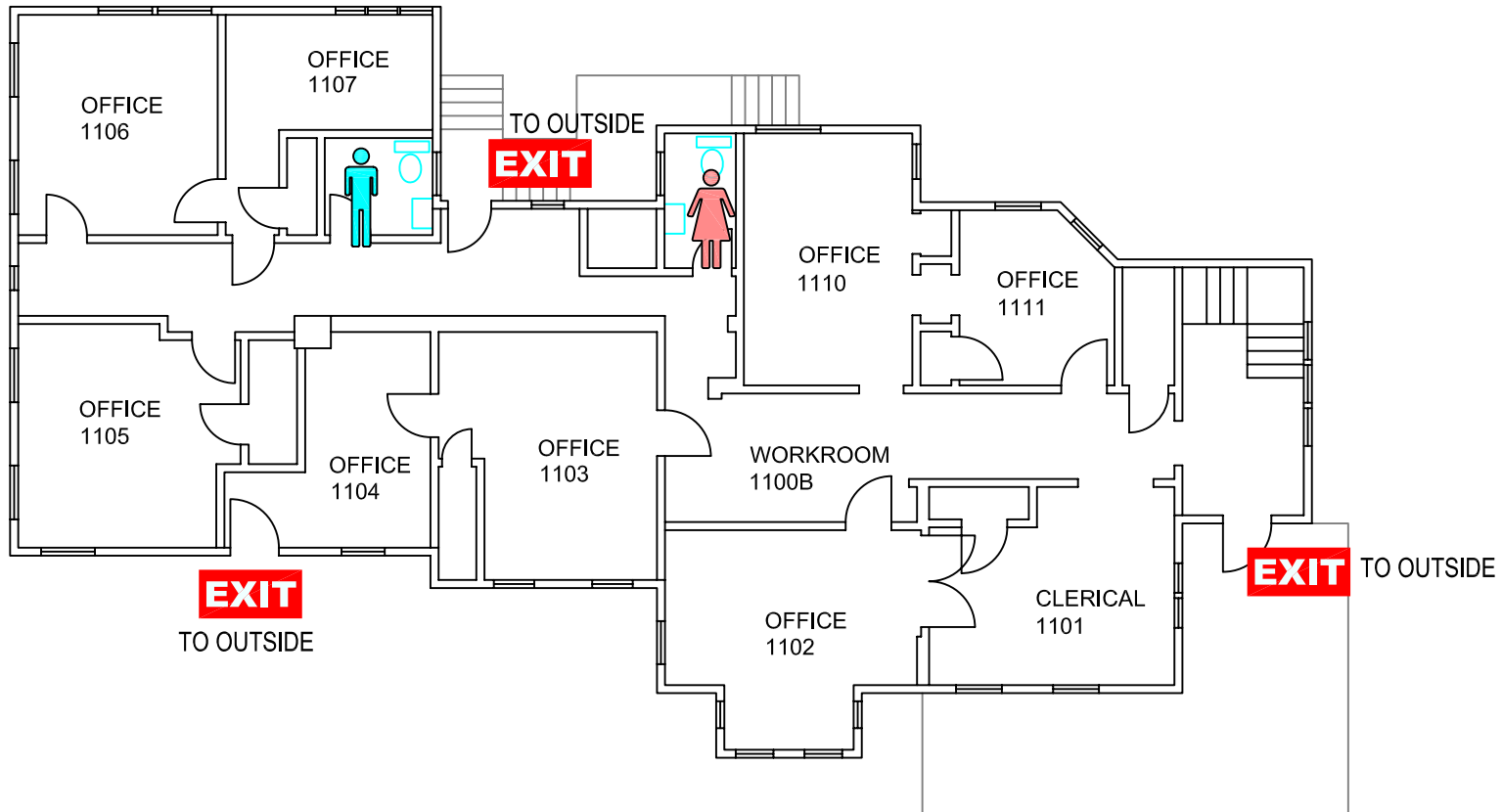
8286 Department of Growth, Development, and Structure

Section of Behavioral Science, Pediatric Dentistry, Community Preventive Dentistry, Orthodontics, and Anatomy



EMERGENCY EXIT PLAN

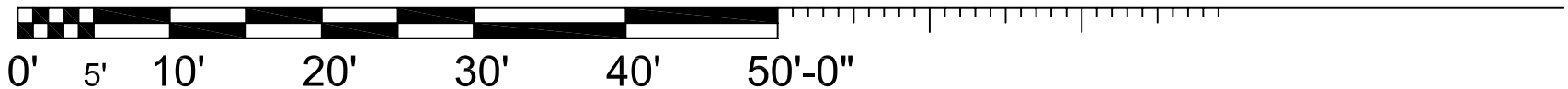
EXIT IN CASE OF EMERGENCY USE MARKED EXITS **EXIT**



1st. Floor

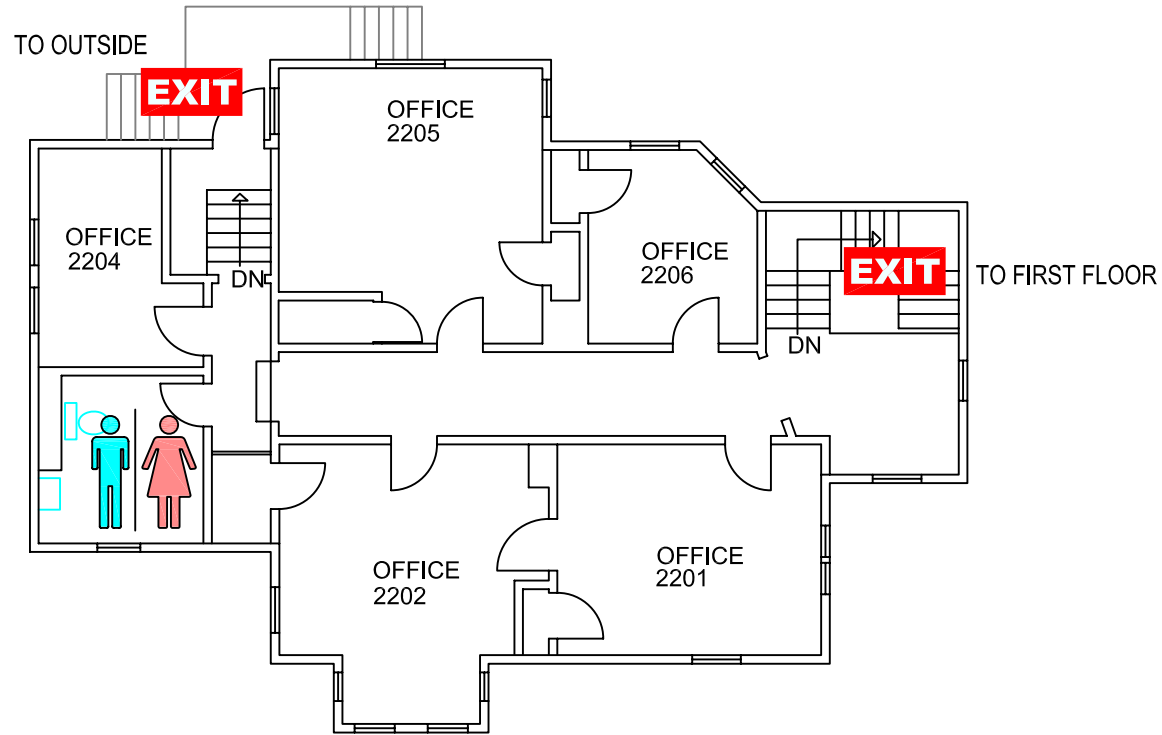
8286 Department of Growth, Development, and Structure

Section of Behavioral Science, Pediatric Dentistry, Community Preventive Dentistry, Orthodontics, and Anatomy



EMERGENCY EXIT PLAN

EXIT IN CASE OF EMERGENCY USE MARKED EXITS **EXIT**



2nd. Floor

8286 Department of Growth, Development, and Structure

Section of Behavioral Science, Pediatric Dentistry, Community Preventive Dentistry, Orthodontics, and Anatomy

