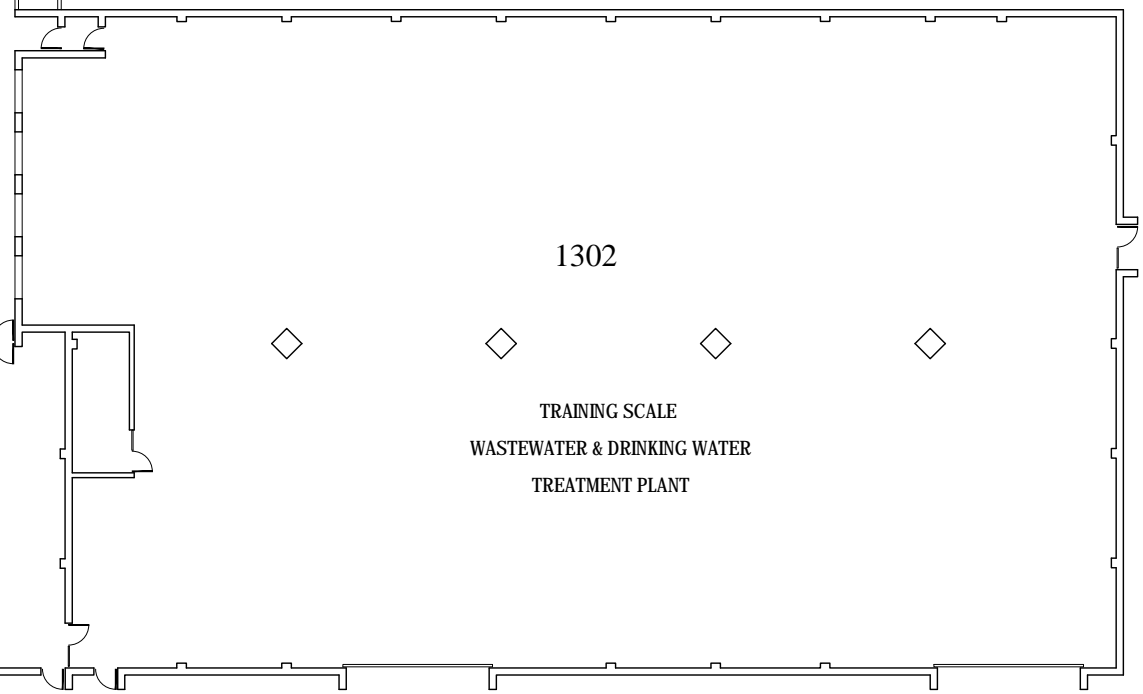


ERTC

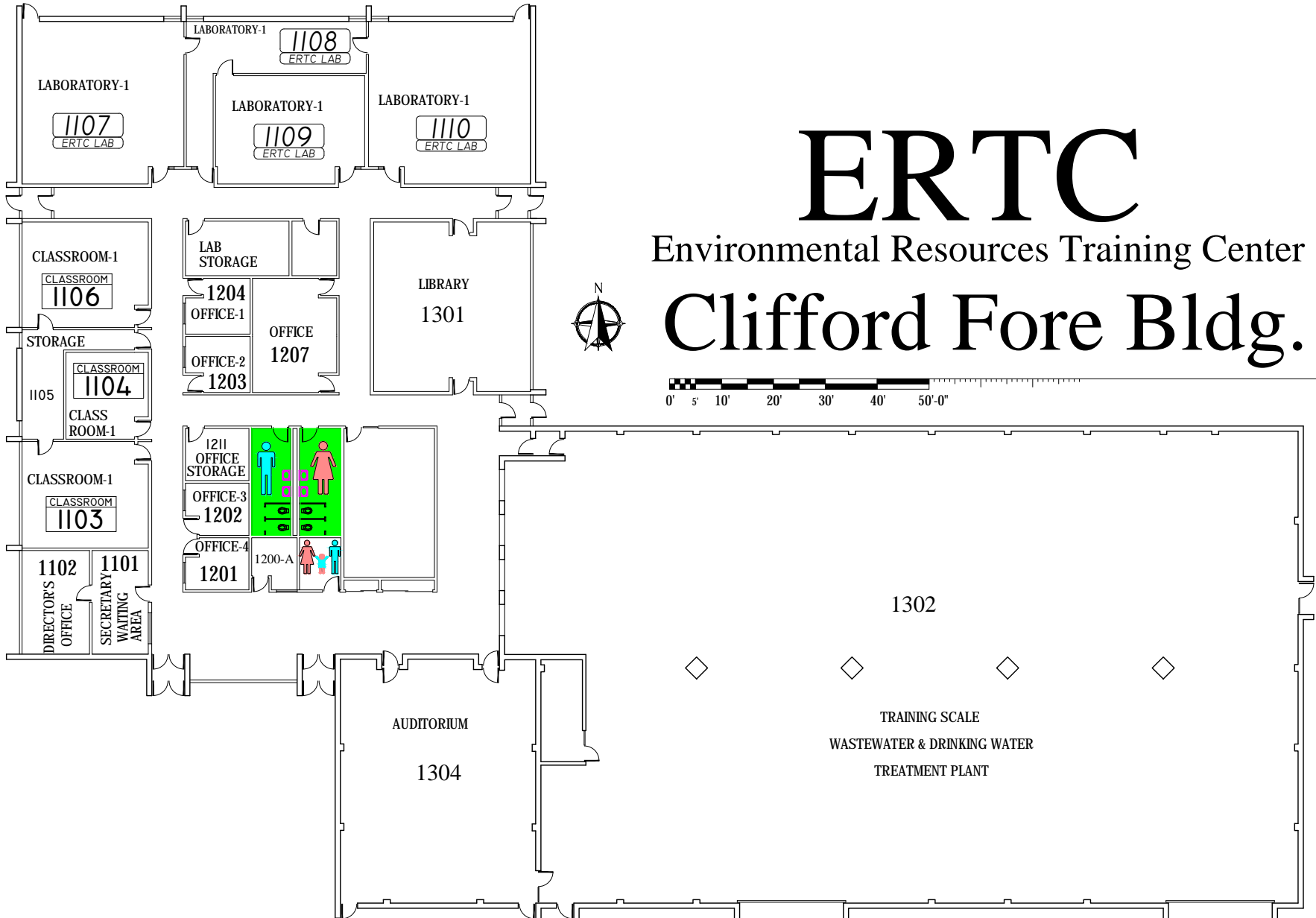
Environmental Resources Training Center

Clifford Fore Bldg.



EMERGENCY STORM SHELTERS

In event of a Tornado Warning everyone should go to a **Primary Storm Shelter**



ERTC

Environmental Resources Training Center

Clifford Fore Bldg.

EMERGENCY EXIT PLAN

EXIT IN CASE OF EMERGENCY USE MARKED EXITS **EXIT**

