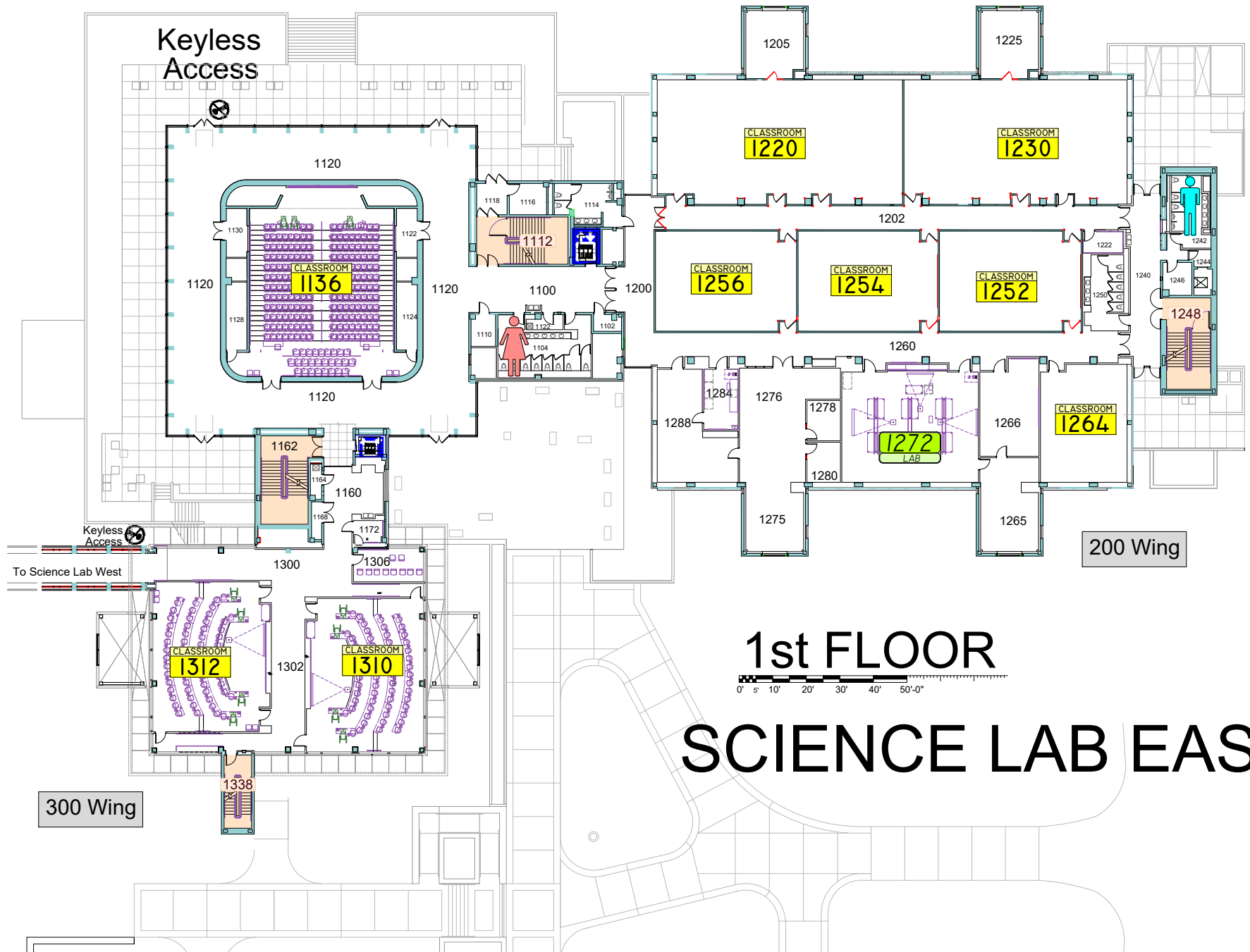


200 Wing

300 Wing  
Physics

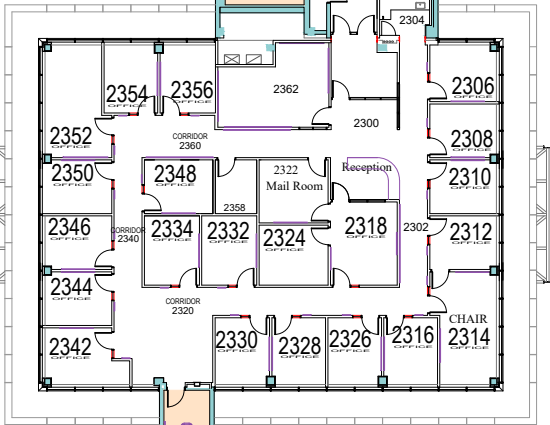
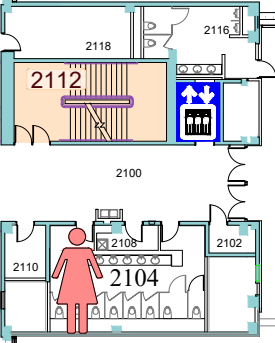
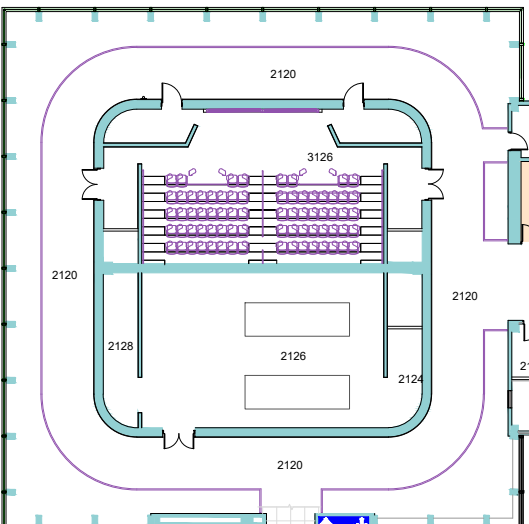
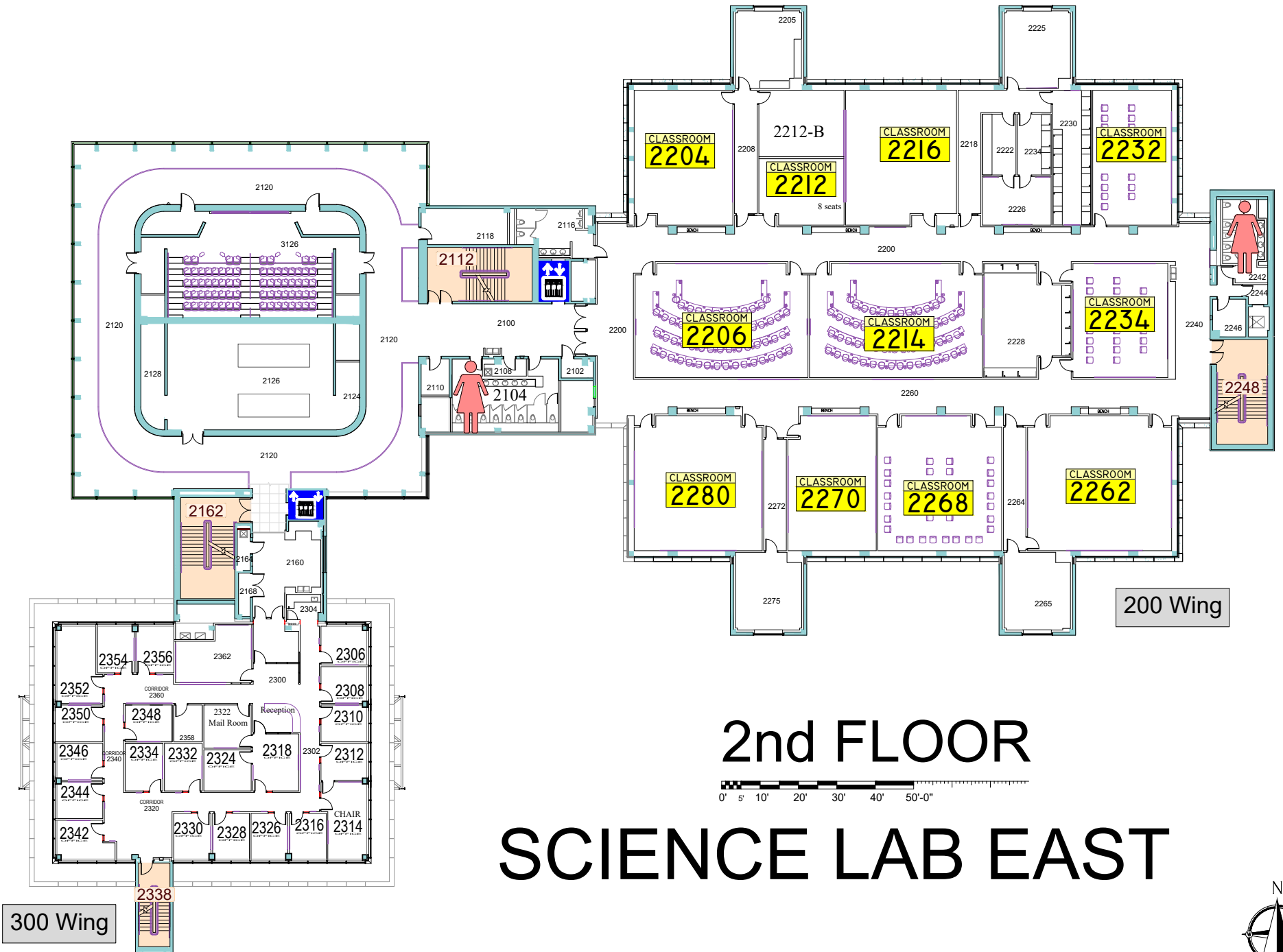
# LOWER LEVEL SCIENCE LAB EAST

5/20/2021



# 1st FLOOR SCIENCE LAB EAST



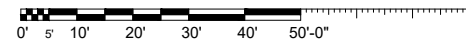


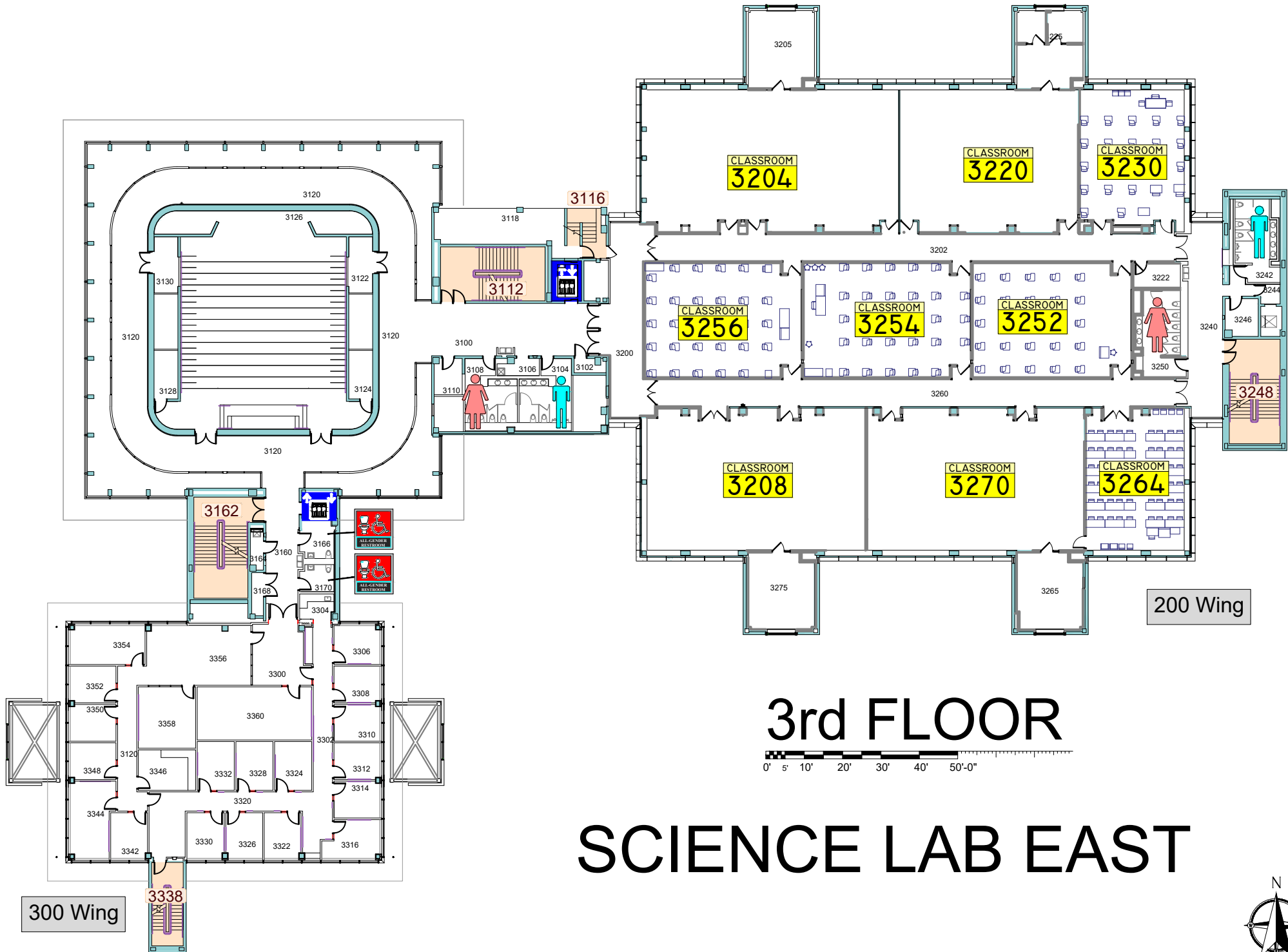
**300 Wing**

**200 Wing**

**2nd FLOOR**

**SCIENCE LAB EAST**





CLASSROOM  
3204

CLASSROOM  
3220

CLASSROOM  
3230

CLASSROOM  
3256

CLASSROOM  
3254

CLASSROOM  
3252

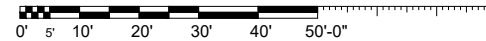
CLASSROOM  
3208

CLASSROOM  
3270

CLASSROOM  
3264

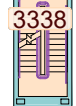
200 Wing

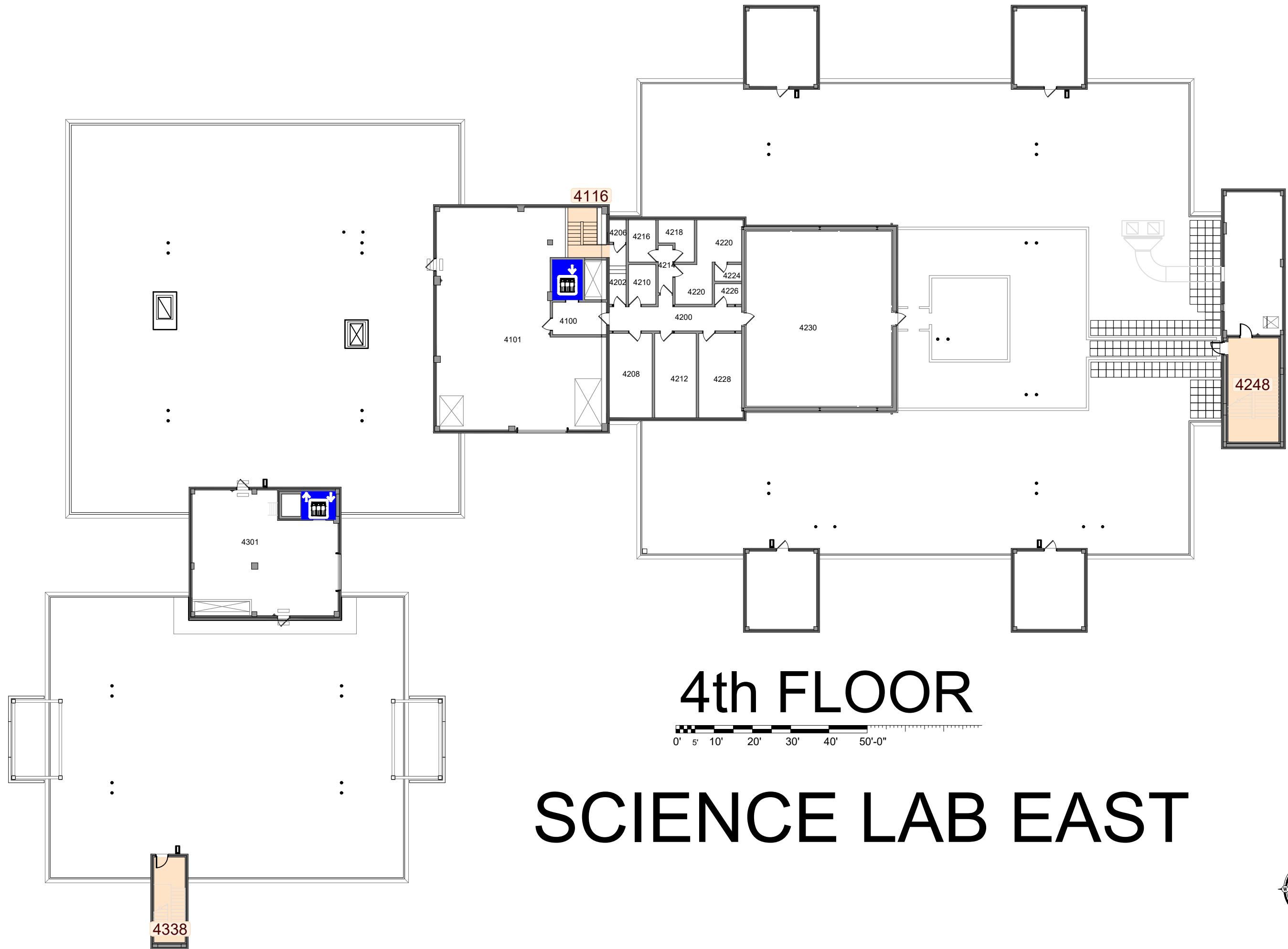
# 3rd FLOOR



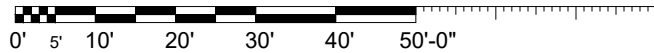
# SCIENCE LAB EAST

300 Wing





# 4th FLOOR



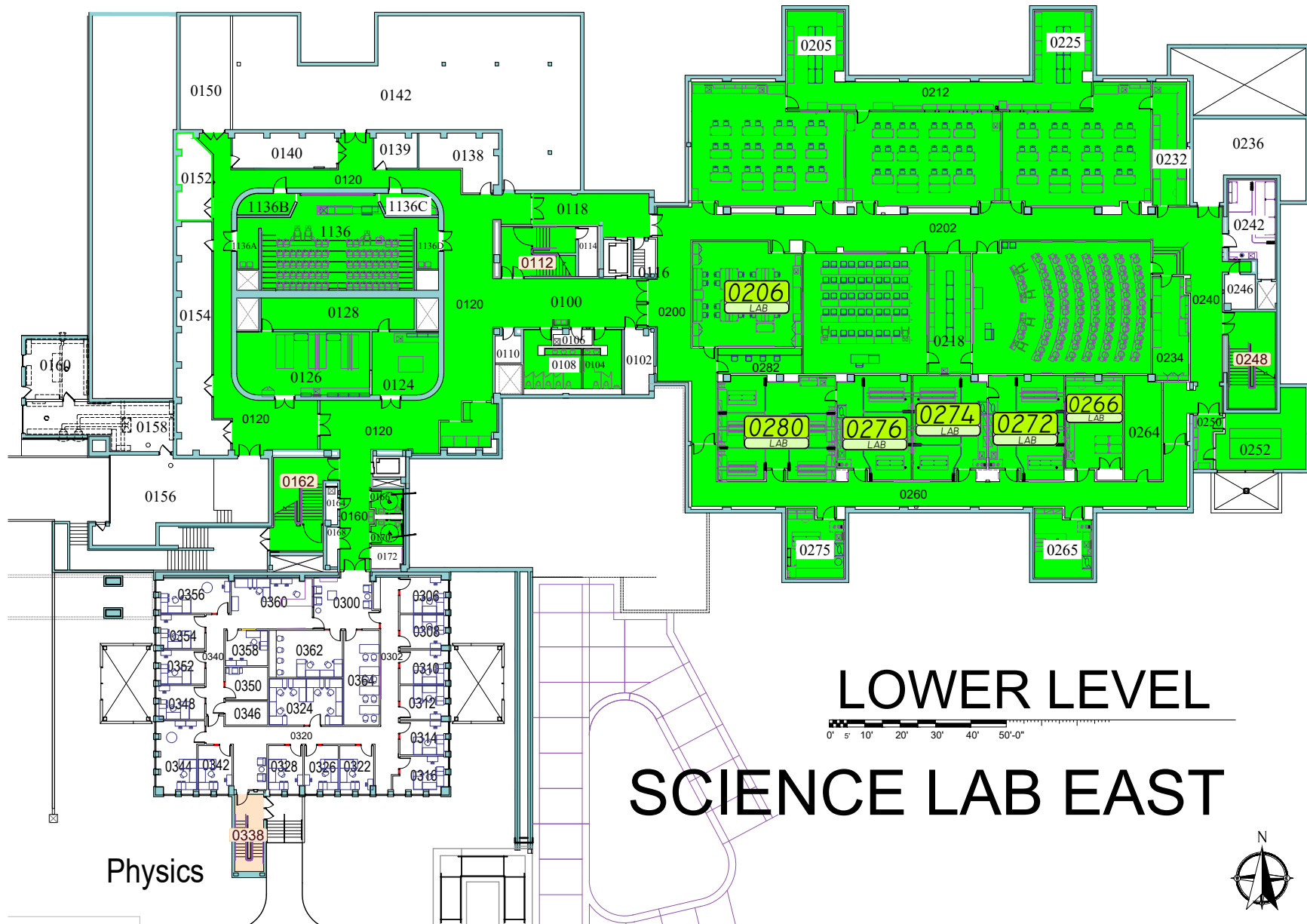
# SCIENCE LAB EAST



# EMERGENCY STORM SHELTERS

In event of a Tornado Warning everyone should go to a Lower Level **Primary Storm Shelter**

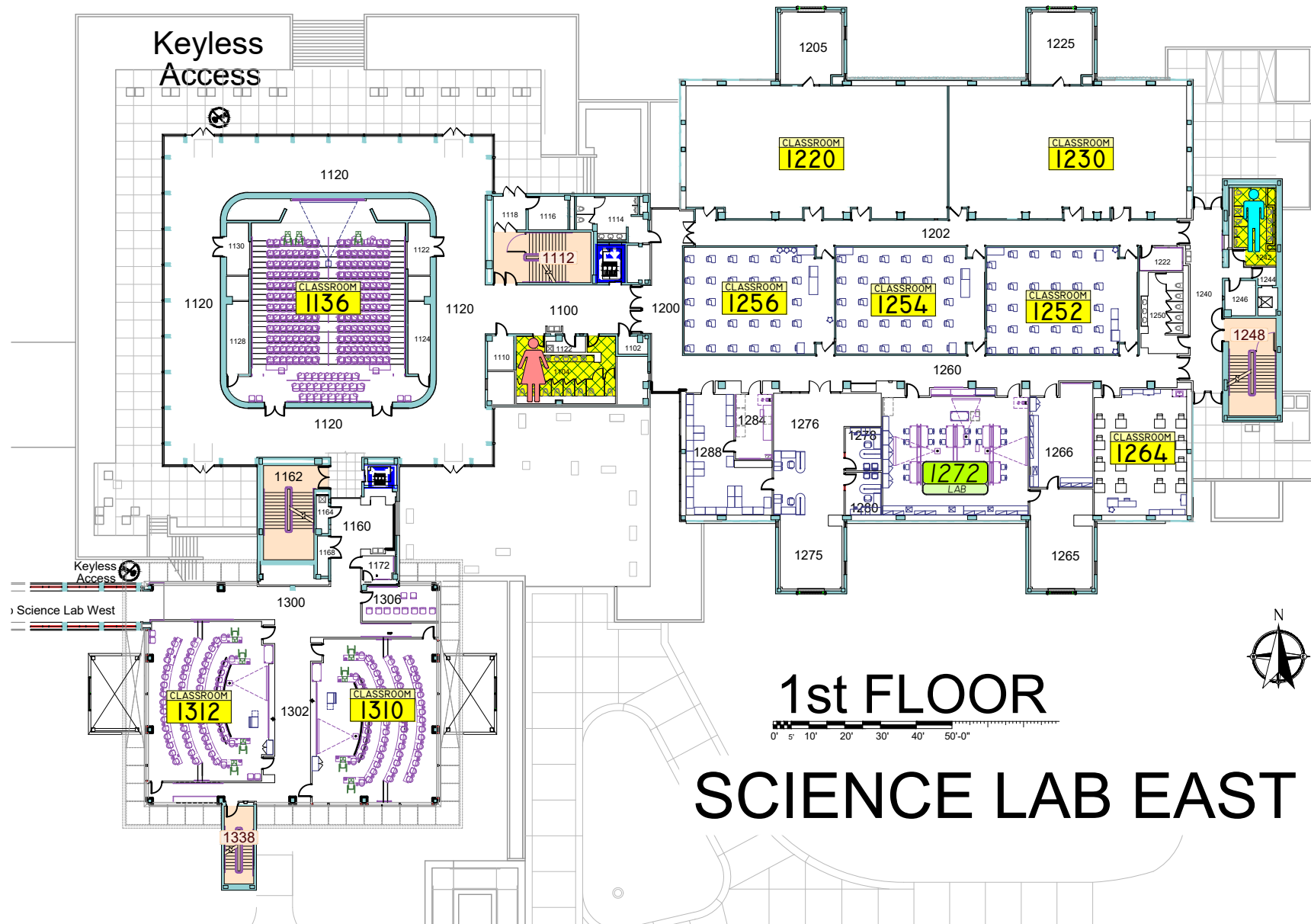
In event you can not get to a Primary Shelter go to a **Secondary Storm Shelter**



# EMERGENCY STORM SHELTERS

In event of a Tornado Warning everyone should go to a Lower Level **Primary Storm Shelter**

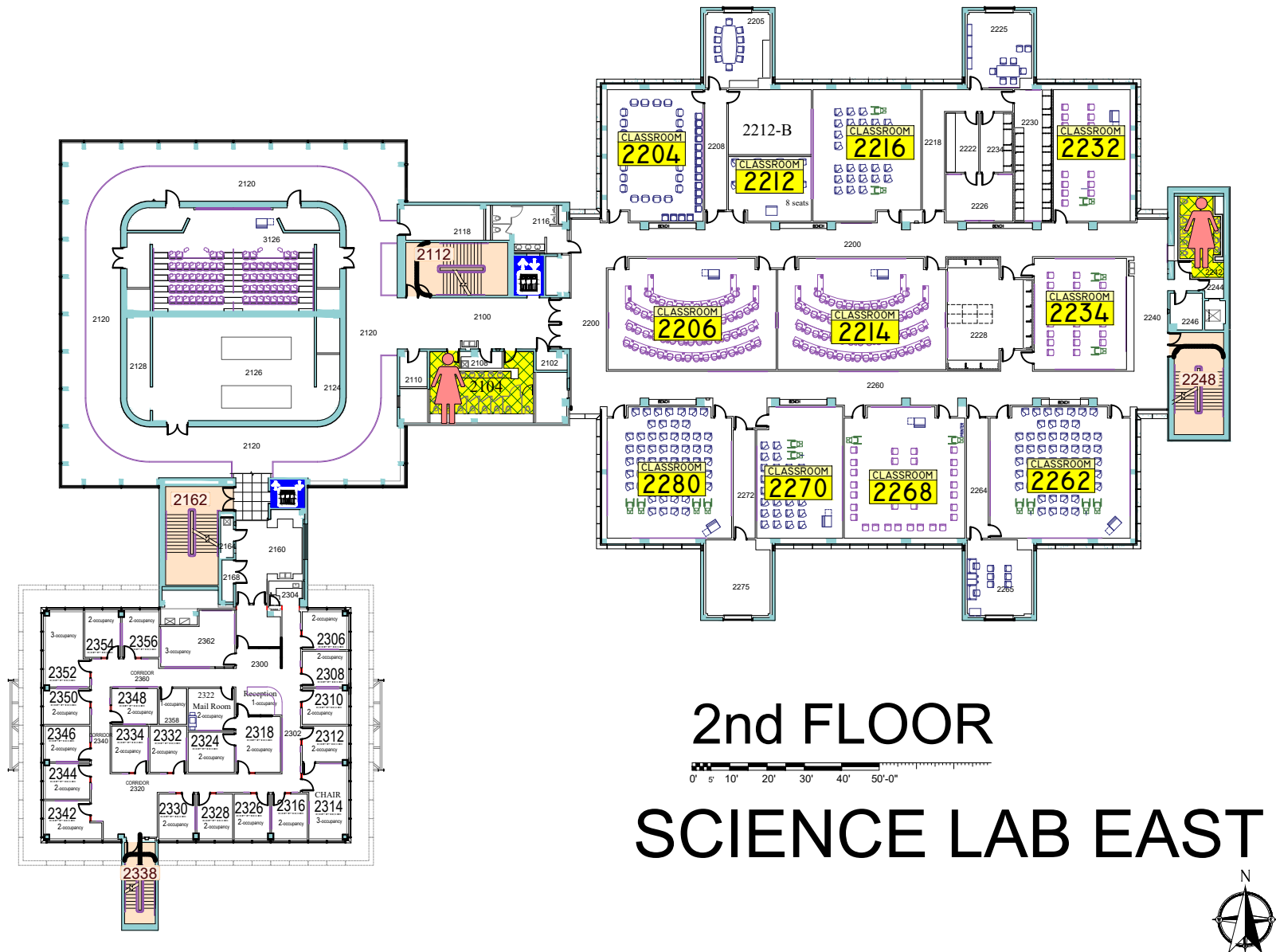
In event you can not get to a Primary Shelter go to a **Secondary Storm Shelter**



# EMERGENCY STORM SHELTERS

In event of a Tornado Warning everyone should go to a Lower Level **Primary Storm Shelter**

In event you can not get to a Primary Shelter go to a **Secondary Storm Shelter**

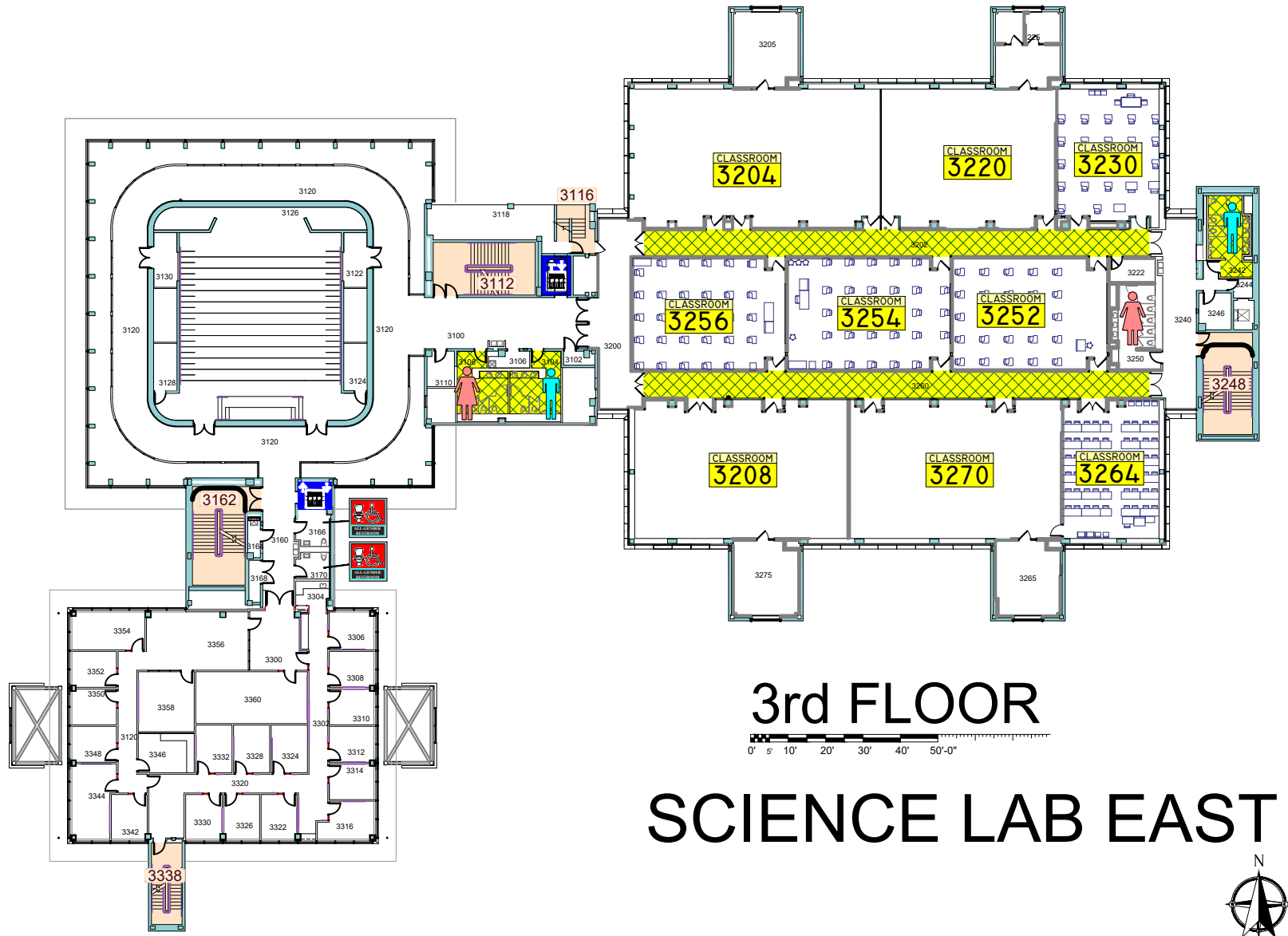




# EMERGENCY STORM SHELTERS

In event of a Tornado Warning everyone should go to a Lower Level **Primary Storm Shelter**

In event you can not get to a Primary Shelter go to a **Secondary Storm Shelter**

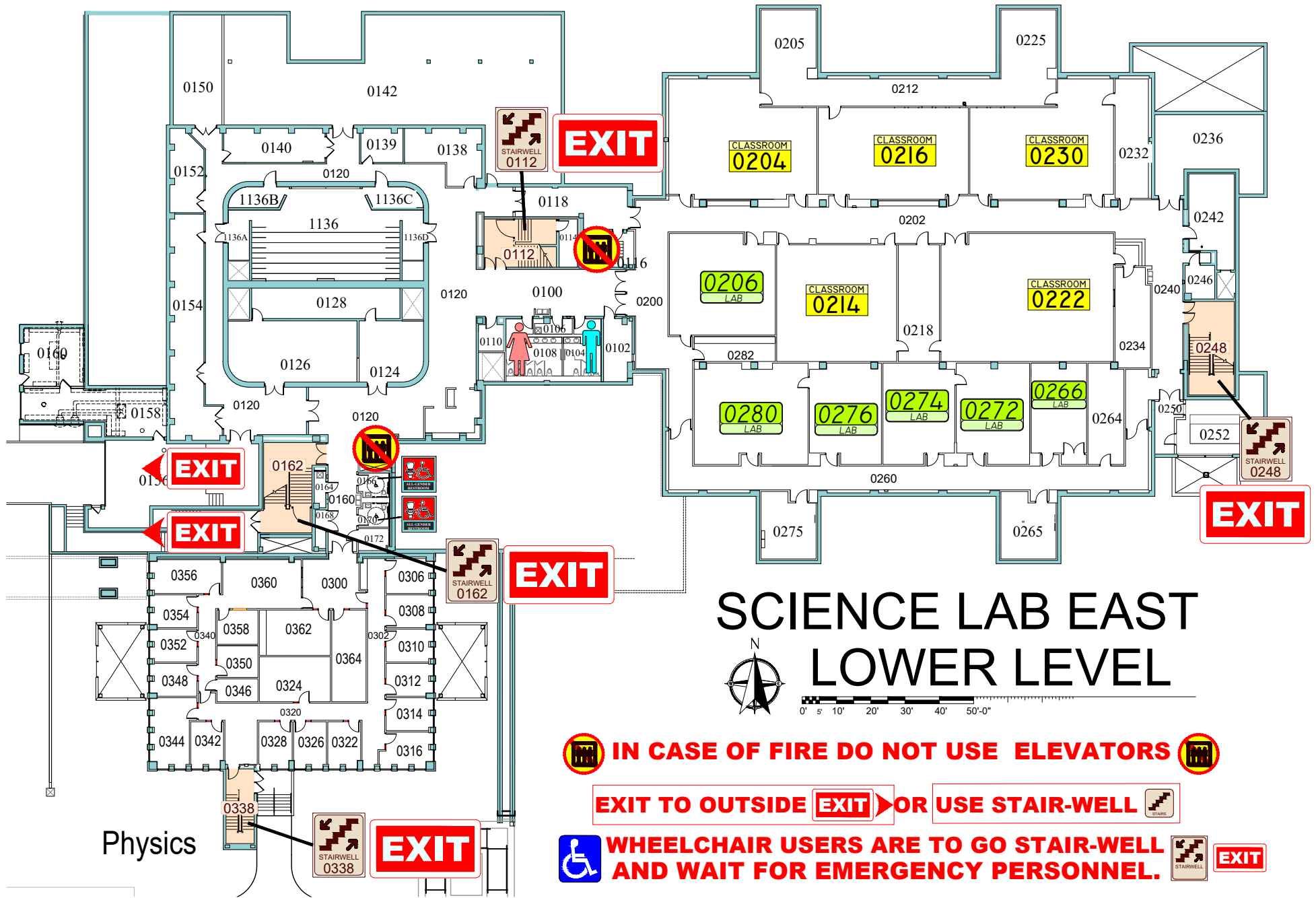


# EMERGENCY EXIT PLAN

**EXIT**

**IN CASE OF EMERGENCY USE MARKED EXITS**

**EXIT**



## SCIENCE LAB EAST LOWER LEVEL



0' 5' 10' 20' 30' 40' 50'-0"



**IN CASE OF FIRE DO NOT USE ELEVATORS**



**EXIT TO OUTSIDE**



**OR USE STAIR-WELL**

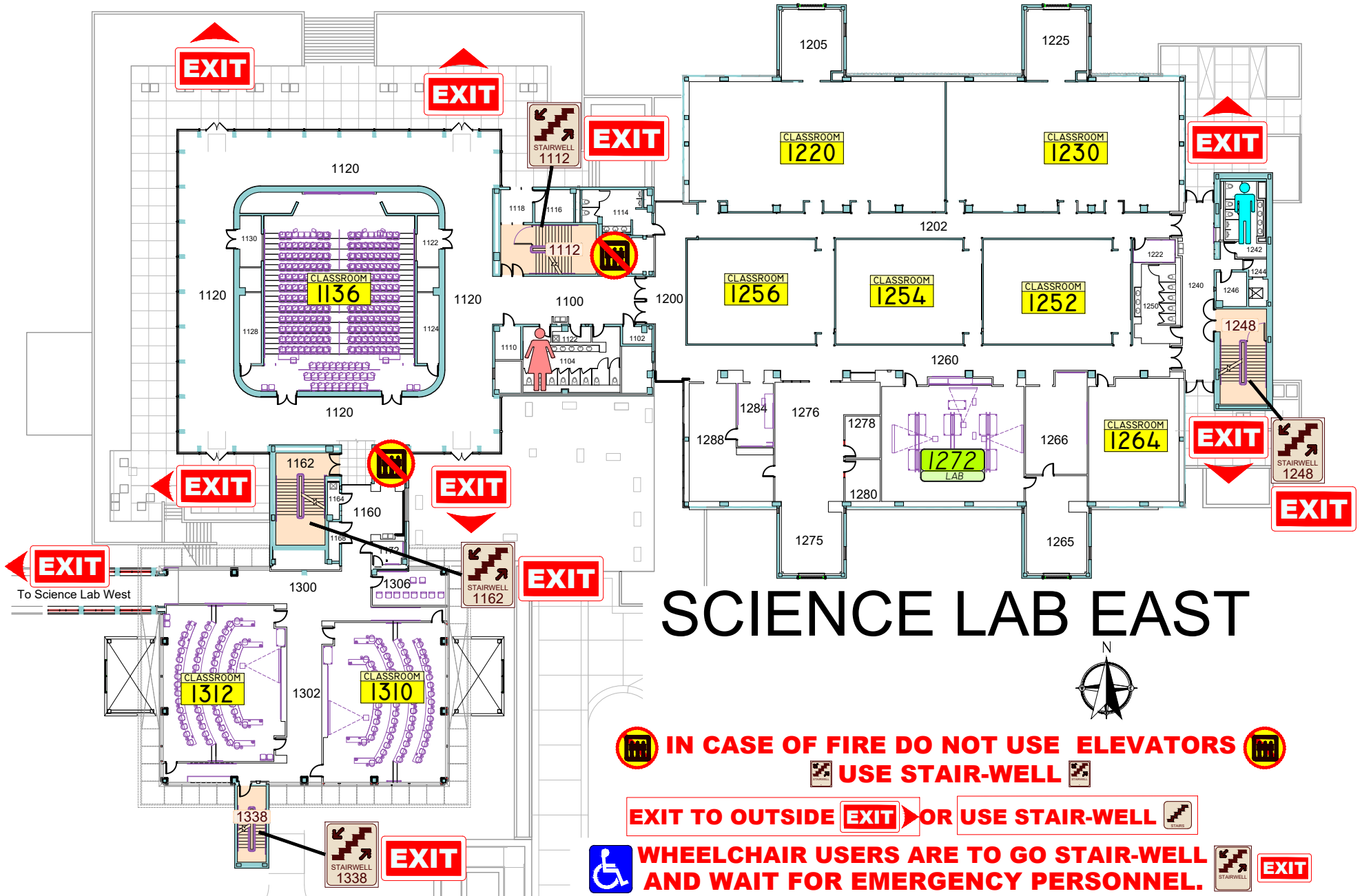


**WHEELCHAIR USERS ARE TO GO STAIR-WELL  
AND WAIT FOR EMERGENCY PERSONNEL.**



# EMERGENCY EXIT PLAN

**EXIT** IN CASE OF EMERGENCY USE MARKED EXITS **EXIT**

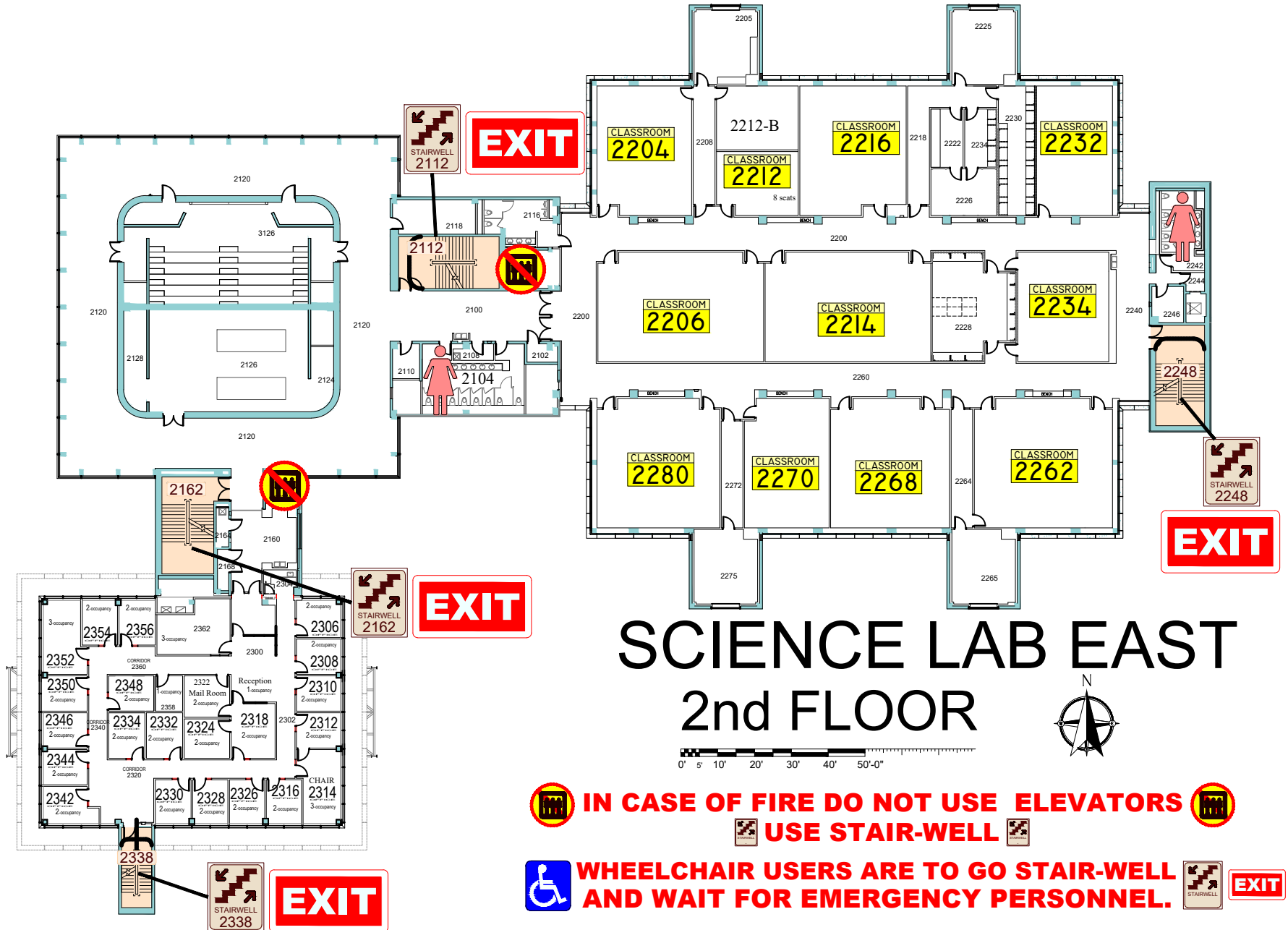


## SCIENCE LAB EAST

- IN CASE OF FIRE DO NOT USE ELEVATORS**
- USE STAIR-WELL**
- EXIT TO OUTSIDE** **OR USE STAIR-WELL**
- WHEELCHAIR USERS ARE TO GO STAIR-WELL AND WAIT FOR EMERGENCY PERSONNEL.** **EXIT**

# EMERGENCY EXIT PLAN

**EXIT** IN CASE OF EMERGENCY USE MARKED EXITS **EXIT**

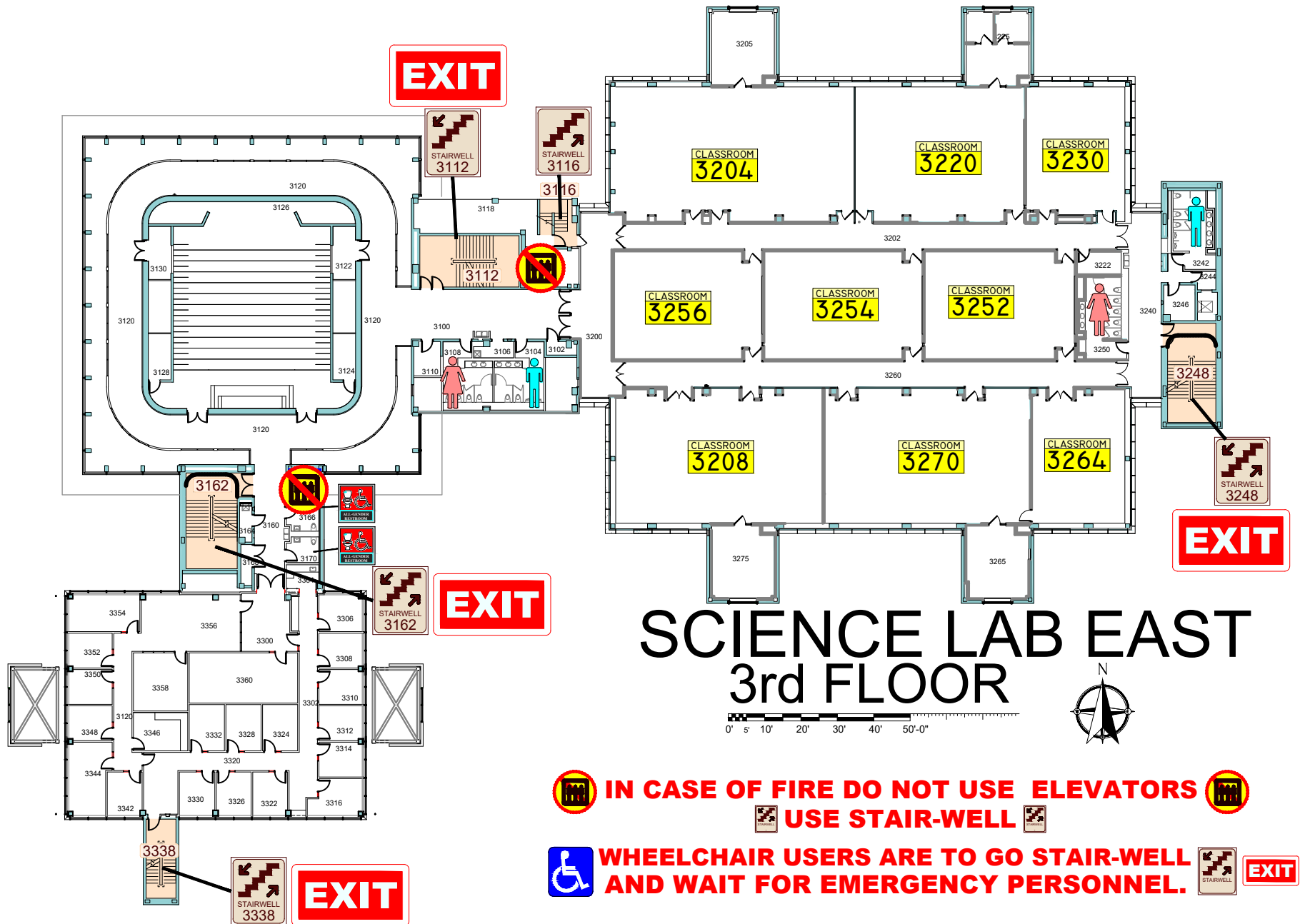


# EMERGENCY EXIT PLAN

**EXIT**

**IN CASE OF EMERGENCY USE MARKED EXITS**

**EXIT**



**IN CASE OF FIRE DO NOT USE ELEVATORS**  
**USE STAIR-WELL**

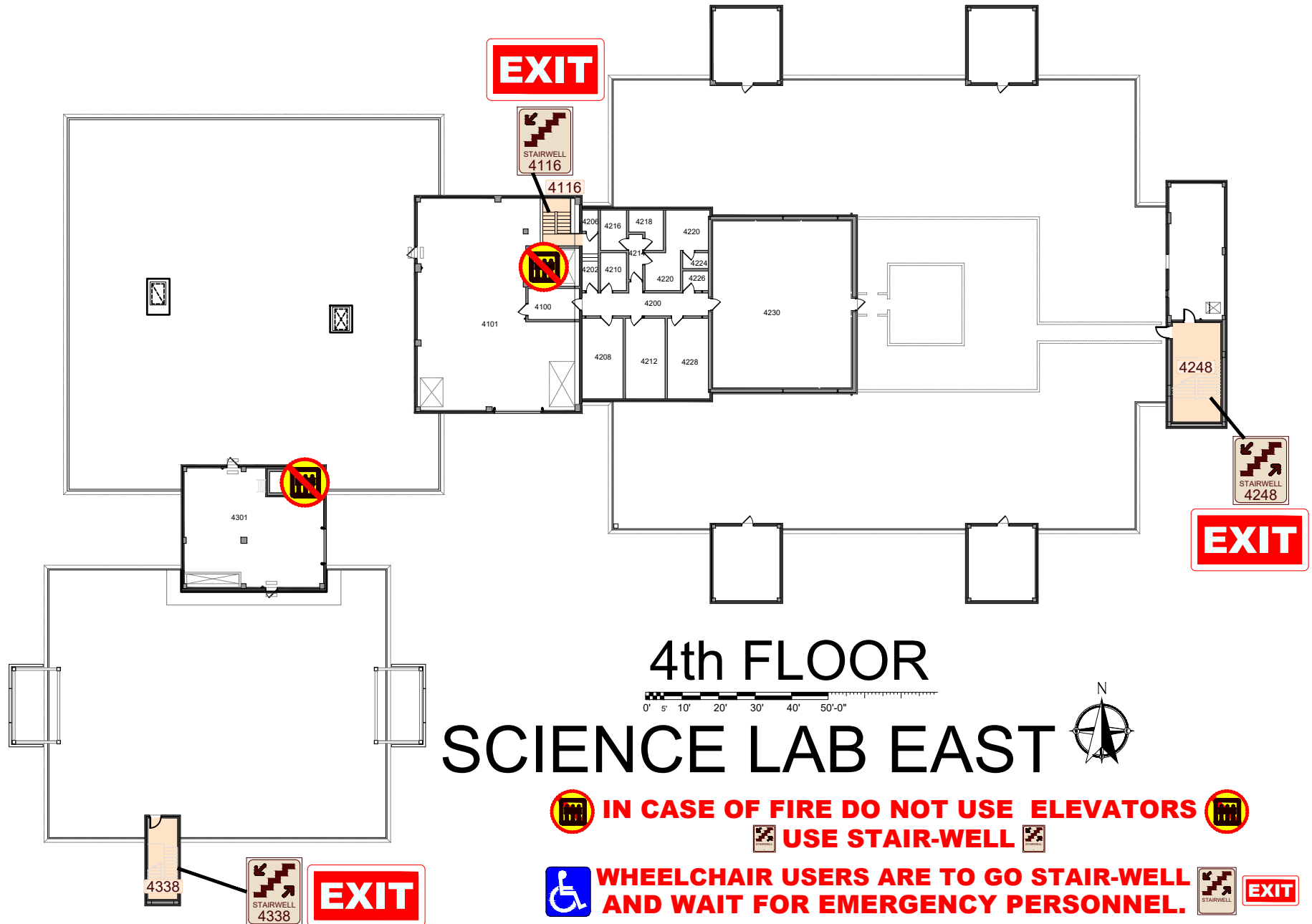
**WHEELCHAIR USERS ARE TO GO STAIR-WELL AND WAIT FOR EMERGENCY PERSONNEL.**

# EMERGENCY EXIT PLAN

**EXIT**

**IN CASE OF EMERGENCY USE MARKED EXITS**

**EXIT**



4th FLOOR

SCIENCE LAB EAST



**IN CASE OF FIRE DO NOT USE ELEVATORS**



**USE STAIR-WELL**



**WHEELCHAIR USERS ARE TO GO STAIR-WELL AND WAIT FOR EMERGENCY PERSONNEL.**



**EXIT**