

**Southern Illinois University Edwardsville**  
**Survey of 2000 Baccalaureate Graduates -- Nine Years Out**

*Survey Results for Schools*

February 2010

Survey Administered By  
The Office of Undergraduate Assessment and Program Review

Survey Results Compiled By  
The Office of Institutional Research and Studies

# Southern Illinois University Edwardsville Survey of 2000 Baccalaureate Graduates -- Nine Years Out

## Contents

### Introduction

### Methodology

### Survey Population and Respondents

Charts: *2000 Baccalaureate Recipients, Profile*

- *Gender*
- *Race/Ethnic*
- *Age at Graduation*
- *Matriculation Status*
- *Time to Degree for New Freshmen*
- *Time to Degree for New Transfers*

Table: *Comparison of All Graduates to Survey Respondents*

### Survey Results

Charts: *2000 Baccalaureate Graduates Nine Years Out, Satisfaction*

- *Present Attitude Toward the University*
- *Present Attitude Towards Alumni's Bachelor's Degree Major*
- *Quality of SIUE Education Relative to That of Friends at Other Schools*

*2000 Baccalaureate Graduates Nine Years Out, Additional Education*

- *Additional Postsecondary Degree?*
- *Currently Pursuing a Degree?*
- *How Well Bachelor's Degree Prepared Alumni for Additional Degree*

*2000 Baccalaureate Graduates Nine Years Out, Employment Status*

- *Employment Status*
- *Place of Employment*
- *Job in Field Related to Major?*
- *Job Satisfaction*
- *How Well Bachelor's Degree Prepared Alum for Current Career Path*
- *Mean Salary of Alumni Employed Full Time*

Tables: *Part I Employment Questions*  
*Part II Education Questions*  
*Part III Satisfaction Questions*  
*Part IV Educational Effectiveness Questions*

### Questionnaire

## Southern Illinois University Edwardsville Survey of 2000 Baccalaureate Graduates -- Nine Year Out

### Introduction

This nine-year out baccalaureate survey was done to provide data for the University's undergraduate program reviews and other planning uses, and to participate in the Illinois Board of Higher Education Baccalaureate Graduates' Follow-up System.

<b>IBHE Survey Schedule and Population Definition</b>		
Survey Year	Survey Type	Survey Group
1992	One-Year Out Survey	Class of >91
1993	Five-Year Out Survey	Class of >88
1994	Ten-Year Out Survey	Class of >84
1995	One-Year Out Survey	Class of >94
1996	Five-Year Out Survey	Class of >91
1997	Nine-Year Out Survey	Class of >88
1998	One-Year Out Survey	Class of >97
1999	Five-Year Out Survey	Class of >94
2000	Nine-Year Out Survey	Class of >91
2001	One-Year Out Survey	Class of >00
2002	Five-Year Out Survey	Class of >97
2003	Nine-Year Out Survey	Class of >94
2004	One-Year Out Survey	Class of '03
2005	Five-Year Out Survey	Class of '00
2006	Nine-Year Out Survey	Class of '97
2007	One-Year Out Survey	Class of '06
2008	Five-Year Out Survey	Class of '03
2009	Nine-Year Out Survey	Class of '00
2010	One-Year Out Survey	Class of 09
2011	Five –Year Out Survey	Class of 06
2012	Nine-Year Out Survey	Class of 03
2013	One-Year Out Survey	Class of 12
2014	Five-Year Out Survey	Class of 09
2015	Nine-Year Out Survey	Class of 06

After the first six years, the surveys were reviewed and changed, modifying some questions and value scales, and adding some additional questions. (See Appendix B for more detailed information on the

“Public University Baccalaureate Graduates’ Follow-Up Surveys.”) In addition, Southern Illinois University Edwardsville has chosen to do a One-Year Out Follow-Up yearly.

The current survey was administered during the spring of 2009 to calendar year 2000 baccalaureate graduates of SIUE. The questionnaire includes 15 questions common to all Illinois public universities. These are the first 15 questions in the survey, forming Parts I, II, III, and Part IV (Employment Questions, Education Questions, Satisfaction Questions, and Educational Effectiveness Questions). SIUE added to these one question on industry of employment, seven additional indicators on educational effectiveness, and five additional questions on educational effectiveness. (A questionnaire is included in Appendix A.)

## **Methodology**

The survey questionnaire and a cover letter were adapted from the questionnaire and letter developed for previous surveys. SIUE Alumni Affairs provided current addresses for calendar year 2000 graduates as determined from institutional records.

On April 4, 2009 approximately two weeks before the first set of surveys were to be mailed, a postcard was sent to the 1,496 2000 baccalaureate graduates for whom addresses were available, notifying the alumni that they would be receiving a questionnaire and encouraging them to complete and return the survey.

Surveys were mailed first class on May 1, 2009. Each envelope included a cover letter, a questionnaire, and a postage-paid, pre-addressed return envelope. Each questionnaire was stamped with a sequential, identifying number which was also stamped on a listing of the graduates (this aided in identifying the surveys when returned). On May 19, approximately three weeks after the survey was mailed and when the rate of survey returns had decreased, a follow-up postcard requesting that the survey be returned was mailed to each student who had not returned his or her survey. On May 25 a second wave mailing of the surveys was sent to the 1,222 remaining non-respondents.

Returned surveys began arriving on May 11<sup>th</sup> and continued through the summer and fall, with a few arriving as late as January 2010. As the surveys came in, each was matched with the corresponding stamped listing. The students’ names were then checked against the alphabetic list of alumni to verify (or, if the alumnus chose not to provide the identification number, to obtain) the student identification number. The student identification number was the key which allowed merging of survey data with administrative records (e.g., biographic, graduation, matriculation, and enrollment information).

**Southern Illinois University Edwardsville**  
**Survey of 2000 Baccalaureate Graduates -- Nine Years Out**

*Survey Population and Respondents*

	Number of Graduates
2000 Baccalaureate Degrees	1,652
Less persons who received 2 baccalaureate degrees	(16)
2000 Baccalaureate Graduates	1,636
Less Graduates with No Address Available *	127
Graduates Surveyed	1,509
Less Non-Deliverable Surveys	57
Less Non-Responding Graduates	1,082
Survey Respondents	370
Gross Response Rate (Respondents/Total Surveyed)	24.52%
Adjusted Response Rate (Respondents/Delivered Surveys)	25.48%

\* Includes deceased alumni, foreign addresses and known bad addresses.

1/26/2010

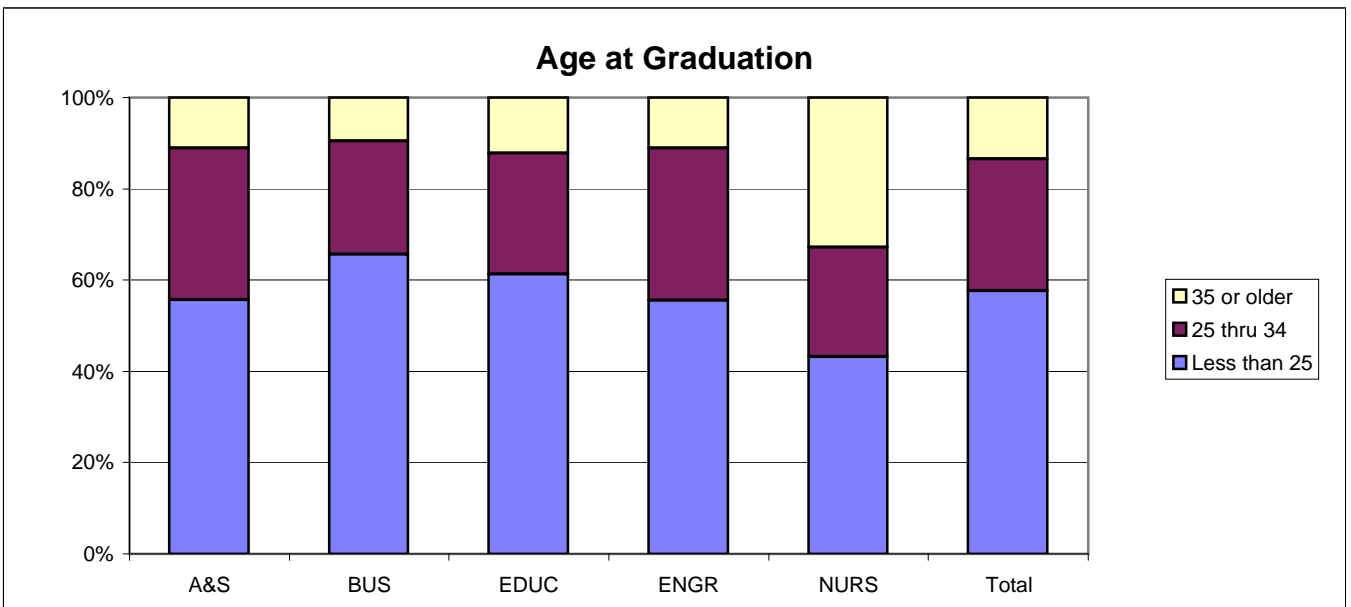
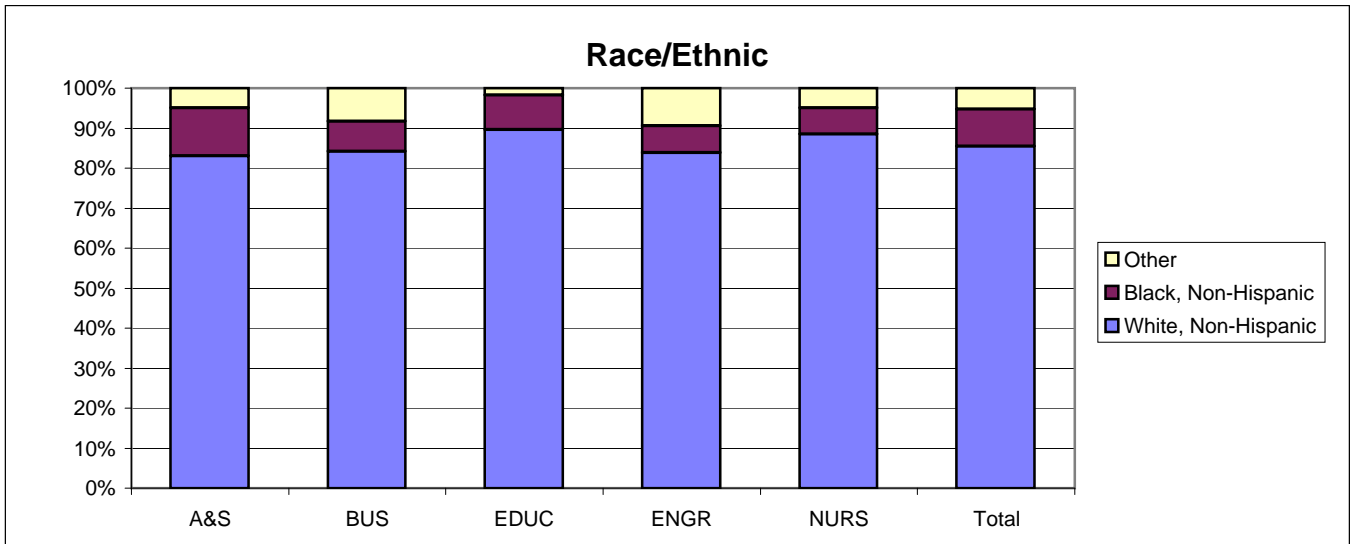
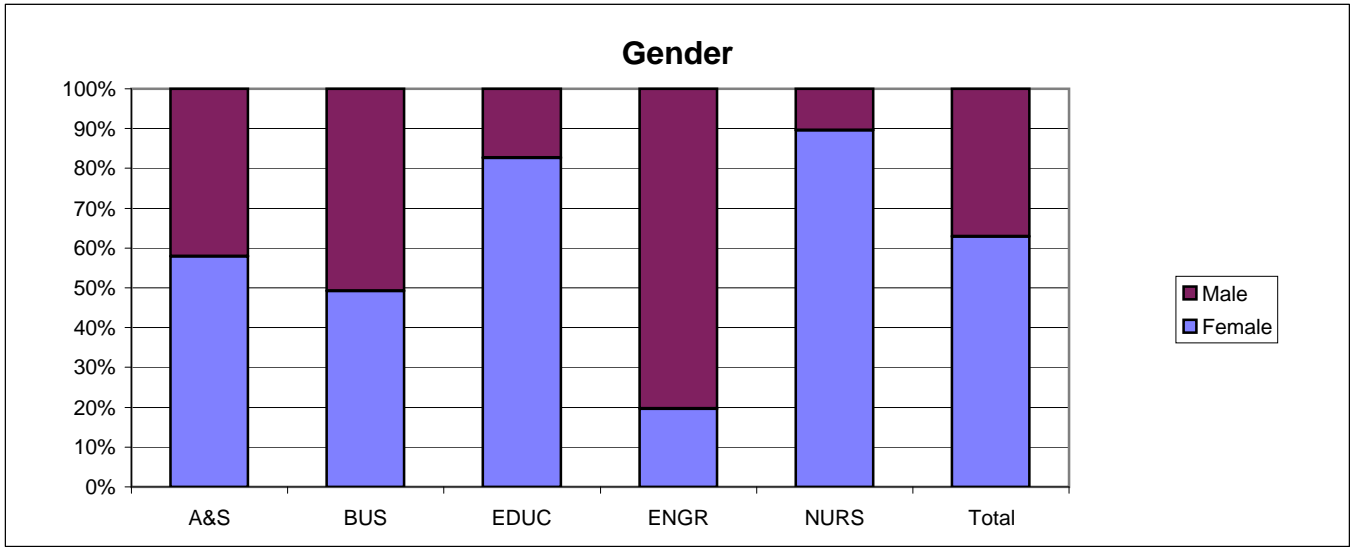
**Southern Illinois University Edwardsville**  
**Survey of 2000 Baccalaureate Graduates -- Nine Years Out**

*Comparison of All Graduates to Survey Respondents*

		All Graduates					
School Detail		A&S	BUS	EDUC	ENGR	NURS	Total
<b>Total</b>		597	346	393	117	183	1636
Female		58.0%	49.1%	82.7%	19.7%	89.6%	62.8%
Male		42.0%	50.9%	17.3%	80.3%	10.4%	37.2%
Missing Data		0.0%	0.0%	0.0%	0.0%	0.0%	0.0%
White, Non-Hispanic		83.1%	84.1%	89.6%	83.8%	88.5%	85.5%
Black, Non-Hispanic		11.9%	7.5%	8.7%	6.8%	6.6%	9.2%
Asian/Pacific Islander		2.2%	2.0%	0.5%	2.6%	2.7%	1.8%
American Indian/Alaskan Native		0.5%	0.9%	0.3%	0.9%	0.5%	0.6%
Hispanic		1.7%	1.7%	1.0%	1.7%	1.6%	1.5%
Non-Resident Alien		0.7%	3.8%	0.0%	4.3%	0.0%	1.3%
Missing Data		0.0%	0.0%	0.0%	0.0%	0.0%	0.0%
Age at Graduation	range	20 to 72	20 to 53	21 to 51	21 to 49	21 to 54	20 to 72
	median	23.6	23.0	23.2	23.6	25.9	23.4
Bachelor of Science		62.8%	81.5%	95.4%	95.7%	100.0%	81.1%
Bachelor of Music		3.0%	0.0%	0.0%	0.0%	0.0%	1.1%
Bachelor of Arts		21.6%	0.3%	4.6%	4.3%	0.0%	9.4%
Bachelor of Fine Arts		1.5%	0.0%	0.0%	0.0%	0.0%	0.6%
Bachelor of Sci in Accountancy		0.0%	18.2%	0.0%	0.0%	0.0%	3.9%
Bachelor of Liberal Studies		11.1%	0.0%	0.0%	0.0%	0.0%	4.0%
Missing Data		0.0%	0.0%	0.0%	0.0%	0.0%	0.0%
Graduated Spring 2000		44.2%	39.6%	54.5%	47.9%	57.9%	47.5%
Graduated Summer 2000		25.8%	24.6%	10.7%	14.5%	7.1%	19.0%
Graduated Fall 2000		30.0%	35.8%	34.9%	37.6%	35.0%	33.5%
Missing Data		0.0%	0.0%	0.0%	0.0%	0.0%	0.0%
Matriculated as a New Freshman		40.4%	38.4%	40.2%	45.3%	36.1%	39.8%
Matriculated as a Transfer		57.8%	60.7%	59.0%	52.1%	63.4%	58.9%
Matriculated as a Non-Degree Student		1.7%	0.9%	0.8%	2.6%	0.5%	1.2%
Missing Data		0.0%	0.0%	0.0%	0.0%	0.0%	0.1%
Time to Degree for New Freshmen							
3 Years or Fewer		0.0%	0.0%	1.3%	0.0%	0.0%	0.3%
4 Years		19.5%	30.1%	22.8%	7.5%	33.3%	22.9%
5 Years		30.3%	33.1%	30.4%	58.5%	42.4%	34.4%
6 Years		18.7%	15.8%	22.8%	13.2%	7.6%	17.5%
7 Years		7.9%	3.8%	7.0%	3.8%	1.5%	5.8%
8 Years		4.1%	1.5%	2.5%	1.9%	0.0%	2.6%
9 Years		2.9%	2.3%	1.3%	0.0%	1.5%	2.0%
10 Years		1.2%	1.4%	1.3%	1.6%	0.9%	1.2%
11 Years or More		14.9%	11.3%	10.1%	13.2%	12.1%	12.6%
Missing Data		0.0%	0.0%	0.0%	0.0%	0.0%	0.0%
Time to Degree for Transfers							
2 or Fewer Years		13.6%	14.8%	12.5%	9.8%	44.0%	17.0%
3 Years		33.0%	37.1%	44.0%	24.6%	31.0%	35.8%
4 Years		24.3%	20.5%	23.7%	21.3%	12.9%	21.8%
5 Years		10.1%	13.8%	12.1%	24.6%	5.2%	11.7%
6 Years		6.4%	2.4%	1.7%	3.3%	1.7%	3.6%
7 Years		3.8%	2.9%	1.3%	6.6%	0.9%	2.8%
8 Years		2.0%	1.0%	0.0%	0.0%	0.0%	0.9%
9 Years		2.0%	2.4%	0.9%	1.6%	1.7%	1.8%
10 Years or More		4.6%	5.2%	3.9%	8.2%	2.6%	4.6%
Missing Data		0.0%	0.0%	0.0%	0.0%	0.0%	0.0%
Graduating GPA (4 point scale) mean		3.074	2.881	3.287	2.933	3.371	3.107
Std Dev		0.471	0.437	0.413	0.434	0.469	0.478

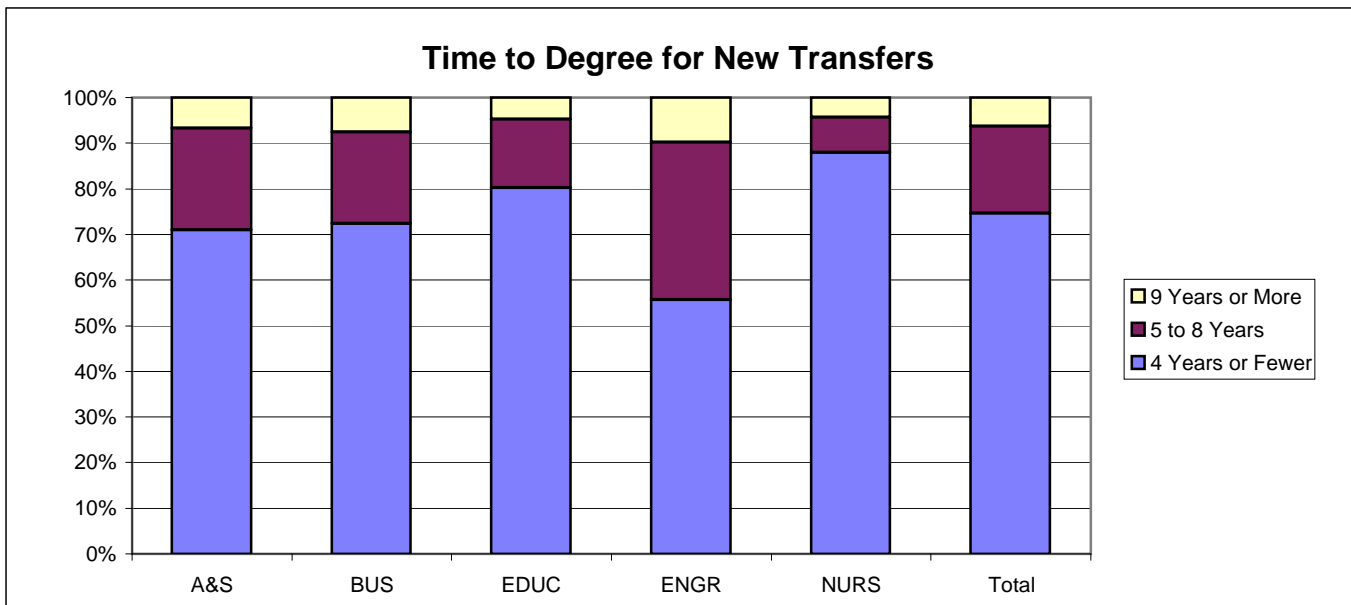
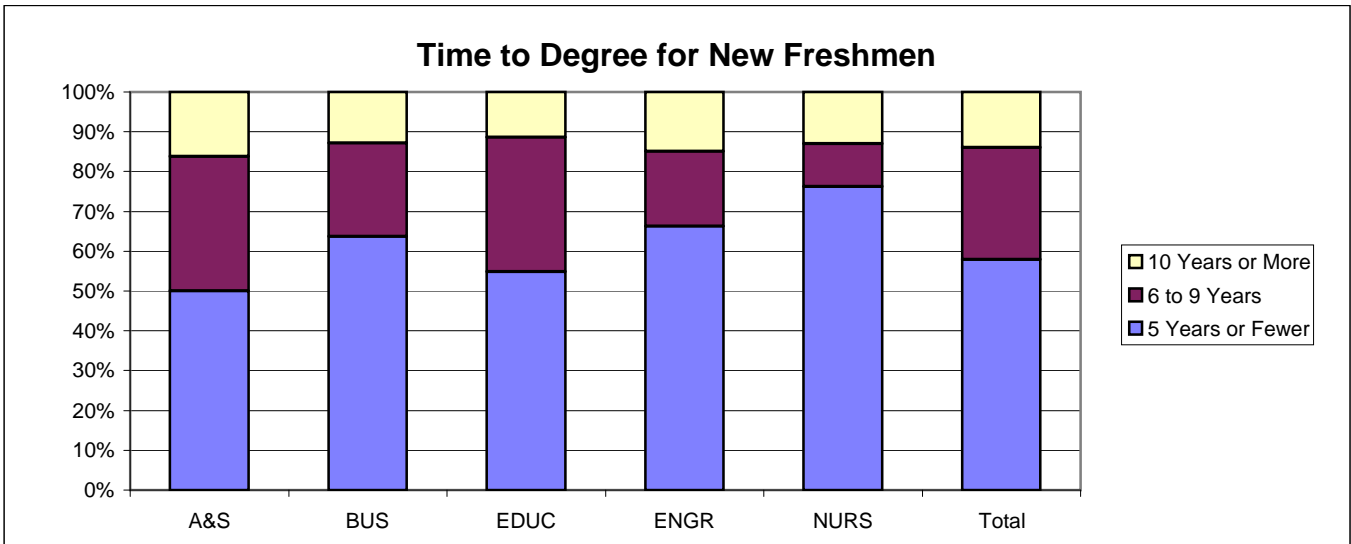
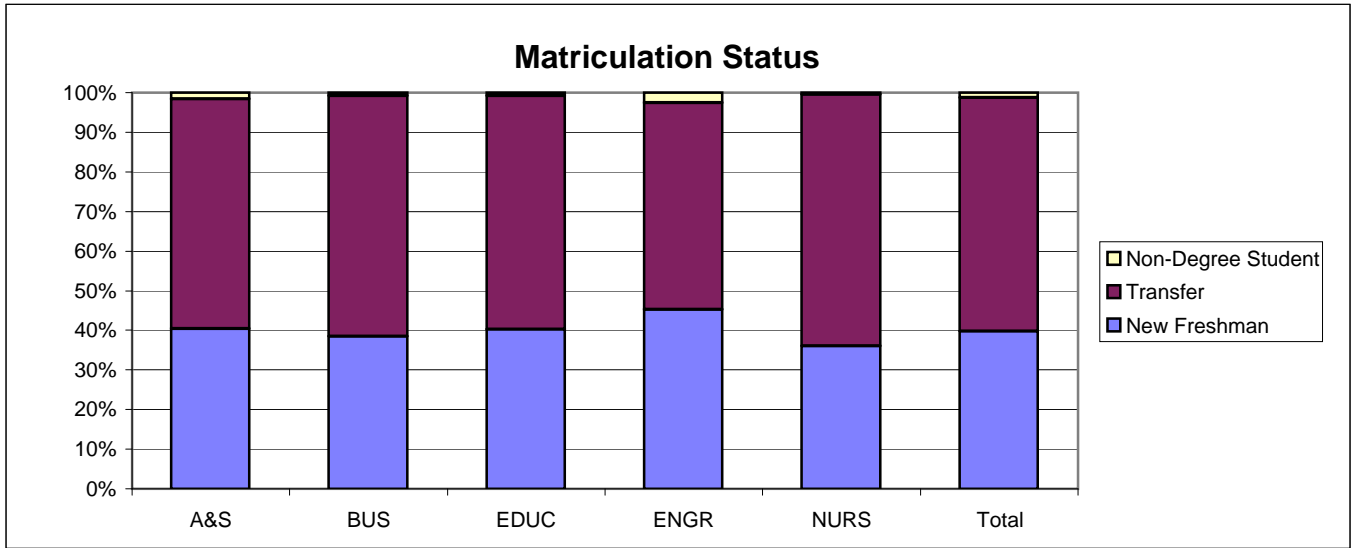
<b>Southern Illinois University Edwardsville</b>							
<b>Survey of 2000 Baccalaureate Graduates -- Nine Years Out</b>							
<i>Comparison of All Graduates to Survey Respondents</i>							
		<b>Survey Respondents</b>					
<b>School Detail</b>		<b>A&amp;S</b>	<b>BUS</b>	<b>EDUC</b>	<b>ENGR</b>	<b>NURS</b>	<b>Total</b>
<b>Total</b>		138	69	94	22	47	370
Female		65.9%	56.5%	84.0%	18.2%	89.4%	68.9%
Male		34.1%	43.5%	16.0%	81.8%	10.6%	31.1%
Missing Data		0.0%	0.0%	0.0%	0.0%	0.0%	0.0%
White, Non-Hispanic		82.6%	92.8%	92.6%	100.0%	91.5%	89.2%
Black, Non-Hispanic		13.8%	7.2%	6.4%	0.0%	6.4%	8.9%
Asian/Pacific Islander		0.0%	0.0%	0.0%	0.0%	0.0%	0.0%
American Indian/Alaskan Native		0.0%	0.0%	0.0%	0.0%	2.1%	0.3%
Hispanic		2.2%	0.0%	1.1%	0.0%	0.0%	1.1%
Non-Resident Alien		0.7%	0.0%	0.0%	0.0%	0.0%	0.3%
Missing Data		0.0%	0.0%	0.0%	0.0%	0.0%	0.0%
Age at Graduation	range	21 to 53	21 to 50	21 to 48	22 to 41	21 to 53	21 to 53
	median	26.4	26.1	27.1	26.0	31.6	27.2
Bachelor of Science		63.0%	68.1%	97.9%	95.5%	100.0%	79.5%
Bachelor of Music		2.9%	0.0%	0.0%	0.0%	0.0%	1.1%
Bachelor of Arts		22.5%	0.0%	2.1%	4.5%	0.0%	9.2%
Bachelor of Fine Arts		0.7%	0.0%	0.0%	0.0%	0.0%	0.3%
Bachelor of Sci in Accountancy		0.0%	31.9%	0.0%	0.0%	0.0%	5.9%
Bachelor of Liberal Studies		10.9%	0.0%	0.0%	0.0%	0.0%	4.1%
Missing Data		0.0%	0.0%	0.0%	0.0%	0.0%	0.0%
Graduated Spring 2000		46.4%	42.0%	67.0%	45.5%	63.8%	53.0%
Graduated Summer 2000		21.0%	23.2%	5.3%	18.2%	6.4%	15.4%
Graduated Fall 2000		32.6%	34.8%	27.7%	36.4%	29.8%	31.6%
Missing Data		0.0%	0.0%	0.0%	0.0%	0.0%	0.0%
Matriculated as a New Freshman		47.8%	44.9%	40.4%	40.9%	36.2%	43.5%
Matriculated as a Transfer		50.0%	53.6%	58.5%	54.5%	63.8%	54.9%
Matriculated as a Non-Degree Student		2.2%	1.4%	1.1%	4.5%	0.0%	1.6%
Missing Data		0.0%	0.0%	0.0%	0.0%	0.0%	0.0%
Time to Degree for New Freshmen							
3 Years or Fewer		0.0%	0.0%	2.6%	0.0%	0.0%	0.6%
4 Years		7.2%	38.7%	34.2%	0.0%	47.1%	26.7%
5 Years		18.8%	35.5%	23.7%	55.6%	29.4%	34.8%
6 Years		10.1%	9.7%	13.2%	33.3%	11.8%	16.8%
7 Years		1.4%	3.2%	10.5%	0.0%	0.0%	4.3%
8 Years		0.0%	0.0%	0.0%	0.0%	0.0%	0.0%
9 Years		1.4%	0.0%	2.6%	0.0%	0.0%	1.9%
10 Years		303.3%	5.4%	0.0%	0.0%	0.0%	2.0%
11 Years or More		7.2%	6.5%	13.2%	11.1%	11.8%	12.4%
Missing Data		0.0%	0.0%	0.0%	0.0%	0.0%	0.0%
Time to Degree for Transfers							
2 or Fewer Years		40.6%	45.9%	63.6%	58.3%	86.7%	55.7%
3 Years		30.4%	24.3%	12.7%	16.7%	10.0%	20.7%
4 Years		13.0%	13.5%	12.7%	16.7%	0.0%	11.3%
5 Years		8.7%	0.0%	0.0%	0.0%	0.0%	3.0%
6 Years		2.9%	2.7%	3.6%	0.0%	0.0%	2.5%
7 Years		1.4%	0.0%	0.0%	0.0%	0.0%	0.5%
8 Years		0.0%	5.4%	1.8%	0.0%	0.0%	1.5%
9 Years		0.0%	2.7%	1.8%	0.0%	3.3%	1.5%
10 Years or More		2.9%	5.4%	3.6%	8.3%	0.0%	3.4%
Missing Data		0.0%	0.0%	0.0%	0.0%	0.0%	0.0%
Graduating GPA (4 point scale)	mean	3.065	3.050	3.376	3.021	3.404	3.182
	Std Dev	0.436	0.466	0.393	0.432	0.465	0.461

## 2000 Baccalaureate Recipients Profile





## 2000 Baccalaureate Recipients Profile, cont.



**Southern Illinois University Edwardsville**  
**Survey of 2000 Baccalaureate Graduates -- Nine Years Out**  
**Survey Responses -- Part I**  
*Employment Questions*

<b>School Detail</b>	<b>A&amp;S</b>	<b>BUS</b>	<b>EDUC</b>	<b>ENGR</b>	<b>NURS</b>	<b>Total</b>
Number of Survey Respondents	138	69	94	22	47	370
1. Number Employed:						
Full-time	81.9%	88.4%	86.0%	100.0%	72.3%	84.0%
Part-time	10.1%	10.1%	6.5%	0.0%	19.1%	9.8%
Not, but Seeking	2.9%	0.0%	2.2%	0.0%	2.1%	1.9%
Not, not Seeking	5.1%	1.4%	5.4%	0.0%	6.4%	4.3%
Number Responding	138	69	93	22	47	369
<b>The remaining questions in Part I were to be answered only by respondents who were employed full-time or part-time.</b>						
	127	68	86	22	43	346
2. Place of Employment						
Illinois	55.8%	38.5%	69.0%	42.1%	69.2%	56.6%
Missouri	25.8%	43.1%	21.4%	42.1%	12.8%	27.5%
Other	18.3%	18.5%	9.5%	15.8%	17.9%	15.9%
Number Responding	120	65	84	19	39	327
3. Classification of Primary Employer						
Self-Employed or Private Practice	8.7%	10.4%	1.2%	4.3%	0.0%	5.8%
Business (Industrial, Commercial or Service)	28.3%	65.7%	8.1%	56.5%	7.0%	29.8%
Professional Firm (e.g., Engineering, Law)	3.9%	3.0%	1.2%	13.0%	0.0%	3.2%
College or University	7.1%	1.5%	2.3%	0.0%	7.0%	4.3%
Elementary/Secondary School	15.7%	3.0%	62.8%	4.3%	2.3%	22.5%
Health Agency (e.g. Hospital, Clinic)	6.3%	7.5%	5.8%	0.0%	69.8%	13.9%
Federal, State, or Local Government	15.7%	6.0%	4.7%	13.0%	9.3%	10.1%
Armed Services	1.6%	0.0%	0.0%	4.3%	2.3%	1.2%
NonProfit (Non-Government)	8.7%	0.0%	10.5%	4.3%	0.0%	6.1%
Other	3.9%	3.0%	3.5%	0.0%	2.3%	3.2%
Number Responding	127	67	86	23	43	345
4. Job Satisfaction						
Very Satisfied	40.2%	42.6%	45.3%	54.5%	46.5%	43.6%
Satisfied	40.9%	42.6%	34.9%	31.8%	39.5%	39.0%
Somewhat Satisfied	8.7%	11.8%	16.3%	13.6%	9.3%	11.6%
Somewhat Dissatisfied	3.1%	1.5%	3.5%	0.0%	0.0%	2.3%
Dissatisfied	4.7%	1.5%	0.0%	0.0%	2.3%	2.3%
Very Dissatisfied	2.4%	0.0%	0.0%	0.0%	2.3%	1.2%
Number Responding	127	68	86	22	43	346
5. Job in Field?						
Closely Related	38.6%	48.5%	79.1%	54.5%	83.7%	57.2%
Related	31.5%	30.9%	15.1%	36.4%	14.0%	25.4%
Unrelated (by choice)	16.5%	14.7%	2.3%	4.5%	0.0%	9.8%
Unrelated (not by choice)	11.8%	5.9%	2.3%	4.5%	0.0%	6.4%
Unrelated (choice unknown)	1.6%	0.0%	1.2%	0.0%	2.3%	1.2%
Number Responding	127	68	86	22	43	346
6. Number of Employers After Graduation						
One	20.0%	27.9%	32.6%	45.5%	23.8%	26.8%
Two	26.4%	27.9%	36.0%	36.4%	38.1%	31.2%
Three to Six	48.0%	41.2%	27.9%	18.2%	38.1%	38.5%
More than Six	5.6%	2.9%	3.5%	0.0%	0.0%	3.5%
Number Responding	125	68	86	22	42	343

**Southern Illinois University Edwardsville**  
**Survey of 2000 Baccalaureate Graduates -- Nine Years Out**  
**Survey Responses -- Part I**  
*Employment Questions*

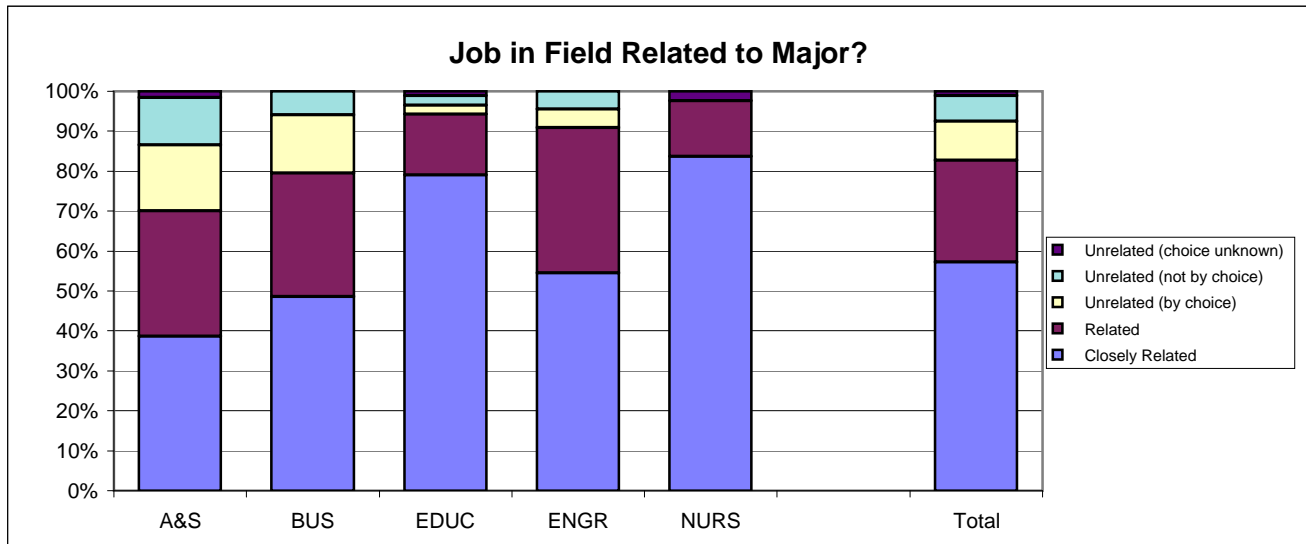
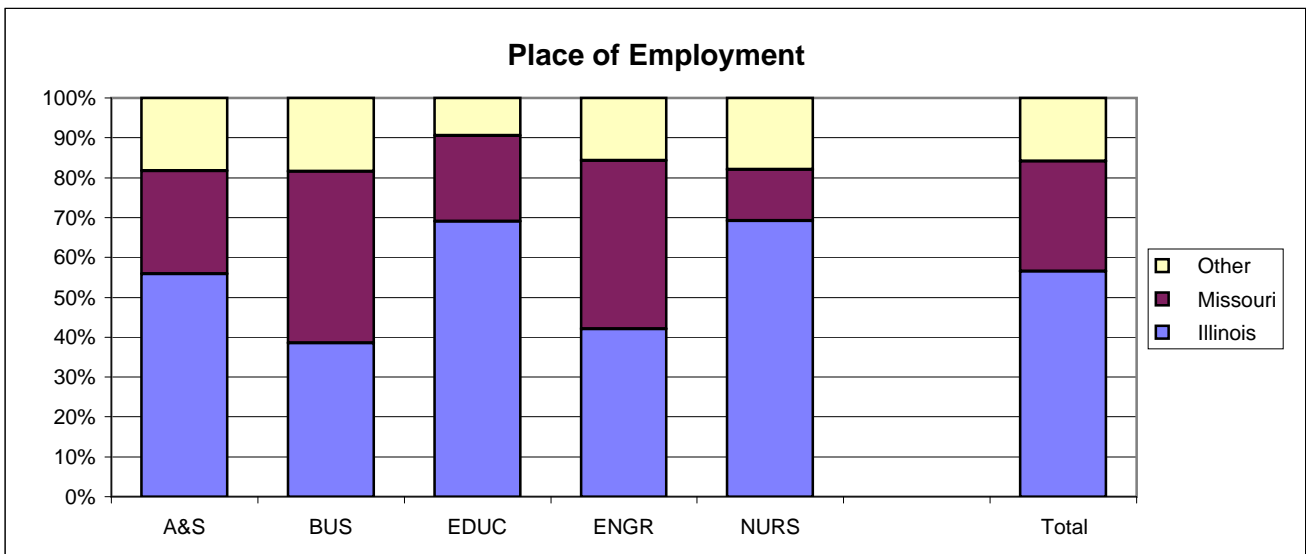
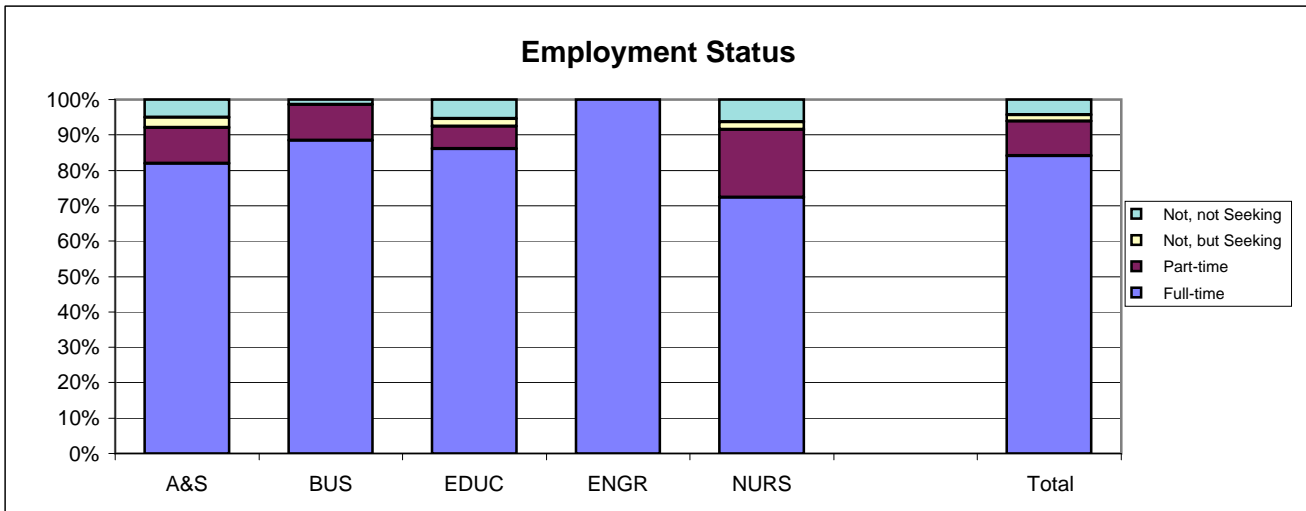
<b>School Detail, cont.</b>	<b>A&amp;S</b>	<b>BUS</b>	<b>EDUC</b>	<b>ENGR</b>	<b>NURS</b>	<b>Total</b>
<b>7. Annual Earned Income in Current Job Before Taxes</b>						
Employed Full-Time						
Less Than \$25,000	2.8%	1.7%	2.8%	0.0%	0.0%	2.1%
\$25,000 to \$29,999	6.6%	0.0%	5.6%	0.0%	0.0%	3.8%
\$30,000 to \$34,999	7.5%	5.2%	4.2%	0.0%	3.0%	5.2%
\$35,000 to \$39,999	4.7%	0.0%	12.5%	5.0%	9.1%	6.2%
\$40,000 to \$44,999	7.5%	6.9%	19.4%	0.0%	12.1%	10.4%
\$45,000 to 49,999	18.9%	17.2%	15.3%	0.0%	9.1%	15.2%
\$50,000 or More	51.9%	69.0%	40.3%	95.0%	66.7%	57.1%
Number Responding	106	58	72	20	33	289
Mean Salary	\$57,933	\$69,295	\$49,606	\$72,300	\$68,340	\$60,310
Employed Part-Time						
Less Than 20,000	53.8%	28.6%	83.3%	NA	12.5%	44.1%
20,000 to \$24,999	23.1%	14.3%	0.0%	NA	12.5%	14.7%
\$24,000 to \$29,999	0.0%	14.3%	16.7%	NA	12.5%	8.8%
\$30,000 to \$34,999	0.0%	14.3%	0.0%	NA	0.0%	2.9%
\$35,000 or More	23.1%	28.6%	0.0%	NA	62.5%	29.4%
Number Responding	13	7	6	0	8	34
Mean Salary	\$38,115	\$29,257	\$16,750	NA	\$36,488	\$32,138
<b>8. Bachelor's Degree Preparation for Career Path</b>						
Very Well	21.3%	23.5%	24.4%	36.4%	47.6%	26.7%
Well	33.9%	44.1%	43.0%	27.3%	33.3%	37.7%
Adequately	29.1%	27.9%	25.6%	27.3%	16.7%	26.4%
Inadequately	12.6%	4.4%	5.8%	4.5%	0.0%	7.2%
Poorly	0.8%	0.0%	0.0%	0.0%	2.4%	0.6%
Very Poorly	2.4%	0.0%	1.2%	4.5%	0.0%	1.4%
Number Responding	127	68	86	22	42	345
<b>9a. Primary Occupation</b>						
Management	16.1%	28.4%	2.5%	10.0%	11.9%	14.4%
Business Operations	5.6%	7.5%	2.5%	10.0%	0.0%	4.8%
Financial Specialists	2.4%	13.4%	2.5%	0.0%	0.0%	4.2%
Computer Specialists	0.8%	22.4%	0.0%	25.0%	0.0%	6.3%
Mathematical Scientists and Technicians	0.0%	1.5%	0.0%	0.0%	0.0%	0.3%
Architects, Surveyors, and Cartographers	0.8%	0.0%	0.0%	0.0%	0.0%	0.3%
Engineers and Related Technicians	5.6%	3.0%	0.0%	50.0%	0.0%	4.2%
Life and Physical Scientists	2.4%	1.5%	0.0%	0.0%	0.0%	2.4%
Social Scientists	3.2%	0.0%	2.5%	0.0%	0.0%	1.5%
Health: Doctors	0.0%	0.0%	2.5%	0.0%	2.4%	2.1%
Health: Registered Nurses	0.8%	0.0%	1.2%	0.0%	71.4%	9.3%
Health: Therapists	0.8%	0.0%	7.4%	0.0%	2.4%	2.4%
Health: Other Health Practs, Profs & supp	8.9%	0.0%	1.2%	0.0%	4.8%	1.8%
Community and Social Service	0.0%	0.0%	8.6%	0.0%	0.0%	5.4%
Legal: Attorneys/Judges	1.6%	3.0%	0.0%	0.0%	0.0%	0.6%
Legal: Legal Support Workers	0.8%	1.5%	0.0%	0.0%	0.0%	0.9%
Education: Early Childhood Teachers	0.8%	1.5%	6.2%	0.0%	0.0%	2.1%
Education: Elementary School Teachers	3.2%	1.5%	30.9%	0.0%	0.0%	8.1%
Education: Middle School Teachers	3.2%	0.0%	9.9%	5.0%	0.0%	3.9%

continued on nex page

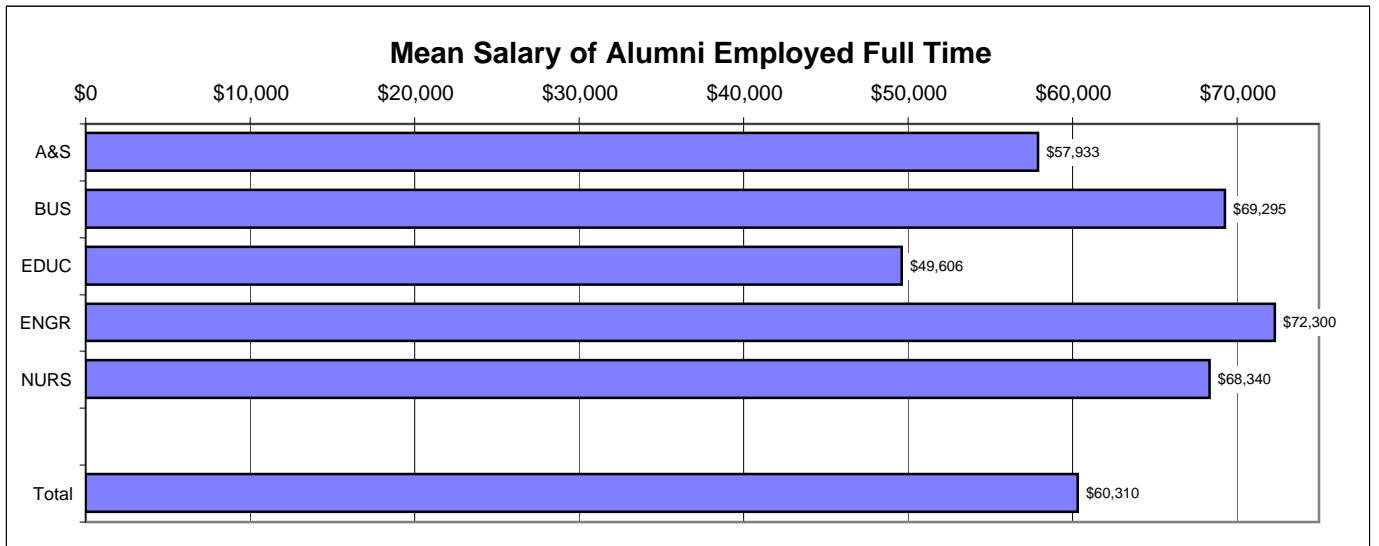
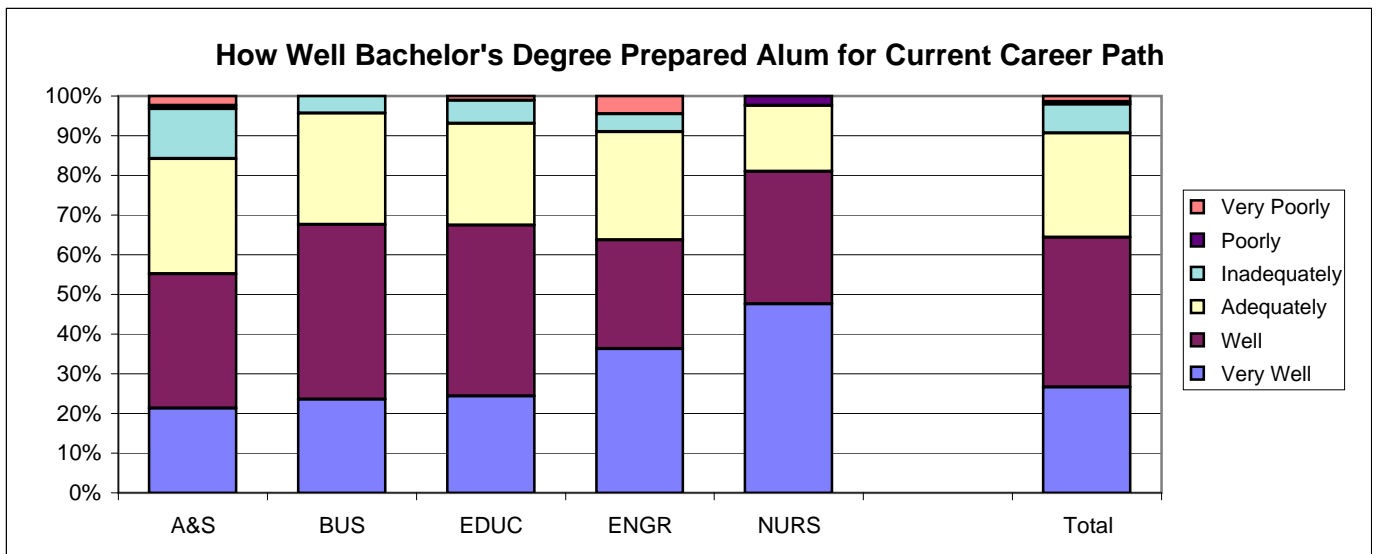
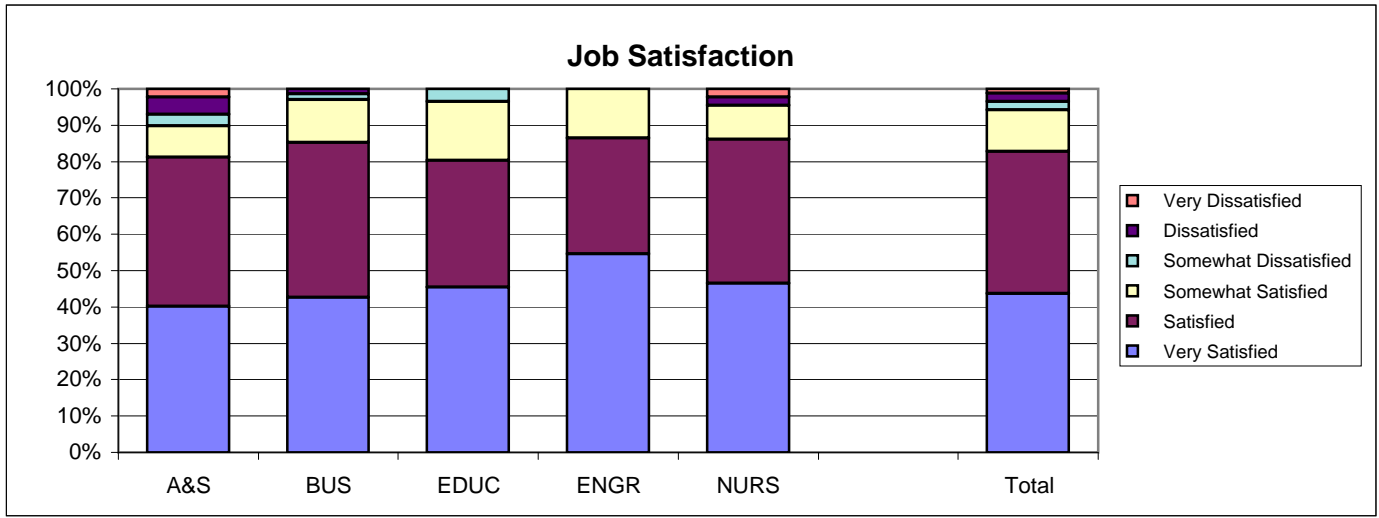
**Southern Illinois University Edwardsville**  
**Survey of 2000 Baccalaureate Graduates -- Nine Years Out**  
**Survey Responses -- Part I**  
*Employment Questions*

<b>School Detail, cont.</b>	<b>A&amp;S</b>	<b>BUS</b>	<b>EDUC</b>	<b>ENGR</b>	<b>NURS</b>	<b>Total</b>
Education: Secondary Teachers	8.9%	1.5%	4.9%	0.0%	0.0%	4.8%
Education: Special Education Teachers	5.6%	0.0%	9.9%	0.0%	0.0%	2.4%
Education: Other, except Administrators	0.0%	0.0%	3.7%	0.0%	4.8%	3.6%
Library Occupations	0.8%	0.0%	0.0%	0.0%	0.0%	0.0%
Arts and Design Workers	3.2%	1.5%	0.0%	0.0%	0.0%	0.6%
Entertainment, Performers, Sports & Related	3.2%	0.0%	0.0%	0.0%	0.0%	1.2%
Media and Communication Workers	4.0%	1.5%	0.0%	0.0%	0.0%	1.5%
Sales	7.3%	4.5%	0.0%	0.0%	0.0%	2.4%
Office and Administration	0.8%	0.0%	0.0%	0.0%	0.0%	2.7%
Protective Services	3.2%	1.5%	0.0%	0.0%	0.0%	0.6%
Food Preparation and Serving	0.0%	0.0%	0.0%	0.0%	0.0%	1.2%
Buildings and Grounds Maintenance	0.0%	0.0%	0.0%	0.0%	0.0%	0.0%
Personal Care and Services	0.8%	0.0%	2.5%	0.0%	0.0%	0.6%
Farming, Fishing, and Forestry	0.0%	0.0%	0.0%	0.0%	0.0%	0.3%
Construction and Extractive	0.8%	0.0%	0.0%	0.0%	0.0%	0.0%
Installation, Maintenance, and Repair	1.6%	1.5%	0.0%	0.0%	0.0%	0.6%
Production	0.8%	1.5%	0.0%	0.0%	0.0%	0.9%
Transportation and Material Moving	1.6%	1.5%	0.0%	0.0%	0.0%	0.6%
Military	1.6%	0.0%	1.2%	0.0%	2.4%	1.2%
Number Responding	124	67	81	20	42	334
<b>9b. Industry</b>						
Agriculture, Forestry, and Fishing	2.1%	1.7%	0.0%	0.0%	0.0%	1.1%
Mining	0.0%	0.0%	0.0%	0.0%	0.0%	0.0%
Utilities	0.0%	3.4%	0.0%	10.0%	0.0%	1.5%
Construction	1.1%	5.1%	0.0%	15.0%	0.0%	2.6%
Manufacturing	8.4%	16.9%	0.0%	20.0%	0.0%	8.2%
Wholesale Trade	1.1%	0.0%	0.0%	0.0%	0.0%	0.4%
Retail Trade	3.2%	3.4%	0.0%	0.0%	0.0%	1.9%
Transportation	1.1%	5.1%	1.7%	5.0%	0.0%	2.2%
Information	1.1%	0.0%	0.0%	5.0%	0.0%	0.7%
Finance & Insurance	4.2%	18.6%	5.1%	5.0%	0.0%	7.1%
Real Estate & Rental & Leasing	1.1%	3.4%	0.0%	0.0%	0.0%	1.1%
Professional, Scientific & Technical Services	15.8%	15.3%	0.0%	30.0%	5.6%	11.9%
Management of Companies & Enterprises	2.1%	0.0%	0.0%	0.0%	0.0%	0.7%
Admin & Suppt, Waste Mgmt & Remedtn Svcs	1.1%	0.0%	0.0%	0.0%	0.0%	0.4%
Educational Services	18.9%	3.4%	64.4%	10.0%	11.1%	23.8%
Health Care & Social Assistance	13.7%	18.6%	20.3%	0.0%	83.3%	24.5%
Arts, Entertainment & Recreation	7.4%	1.7%	0.0%	0.0%	0.0%	3.0%
Accommodations & Food Services	3.2%	0.0%	0.0%	0.0%	0.0%	1.1%
Other Services (except Public Admin)	6.3%	1.7%	6.8%	0.0%	0.0%	4.1%
Public Administration	8.4%	1.7%	1.7%	0.0%	0.0%	3.7%
Number Responding	95	59	59	20	36	269

## 2000 Baccalaureate Graduates Nine Years Out *Employment*



## 2000 Baccalaureate Graduates Nine Years Out *Employment, cont.*

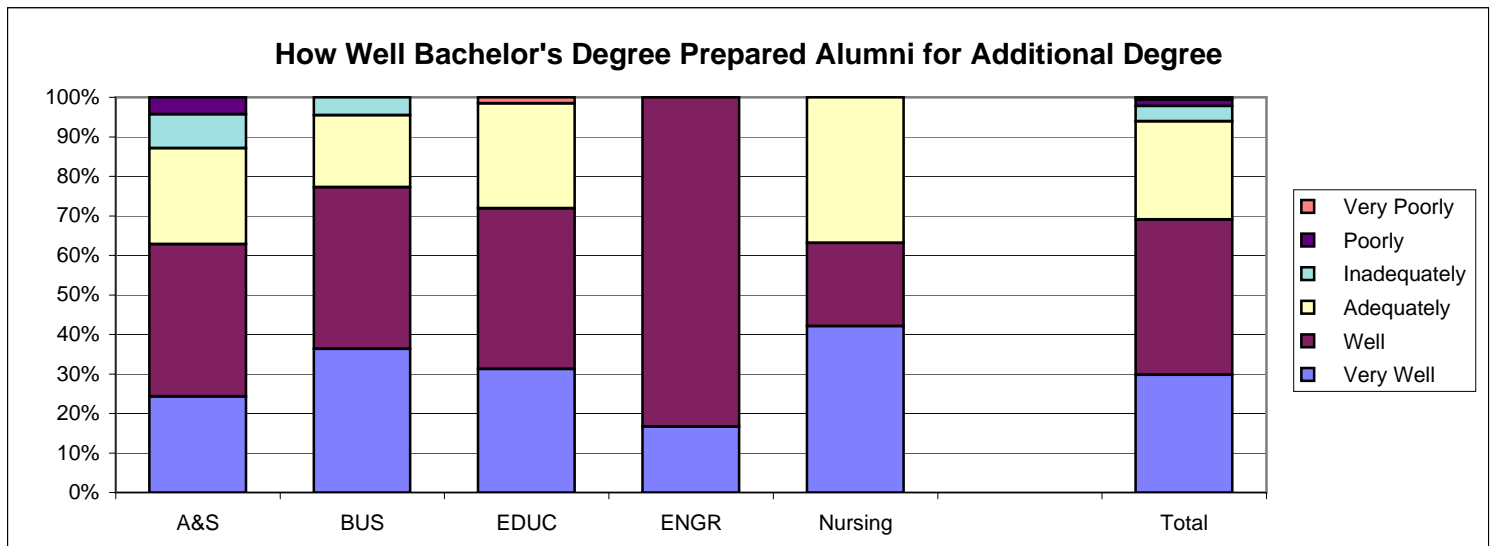
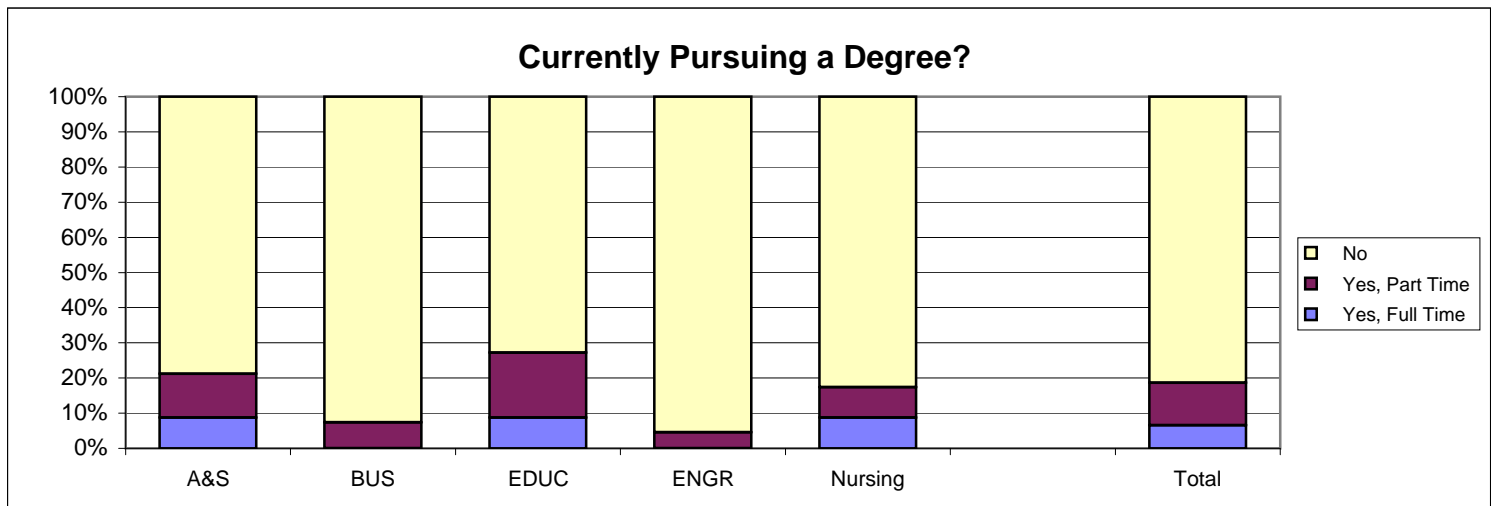
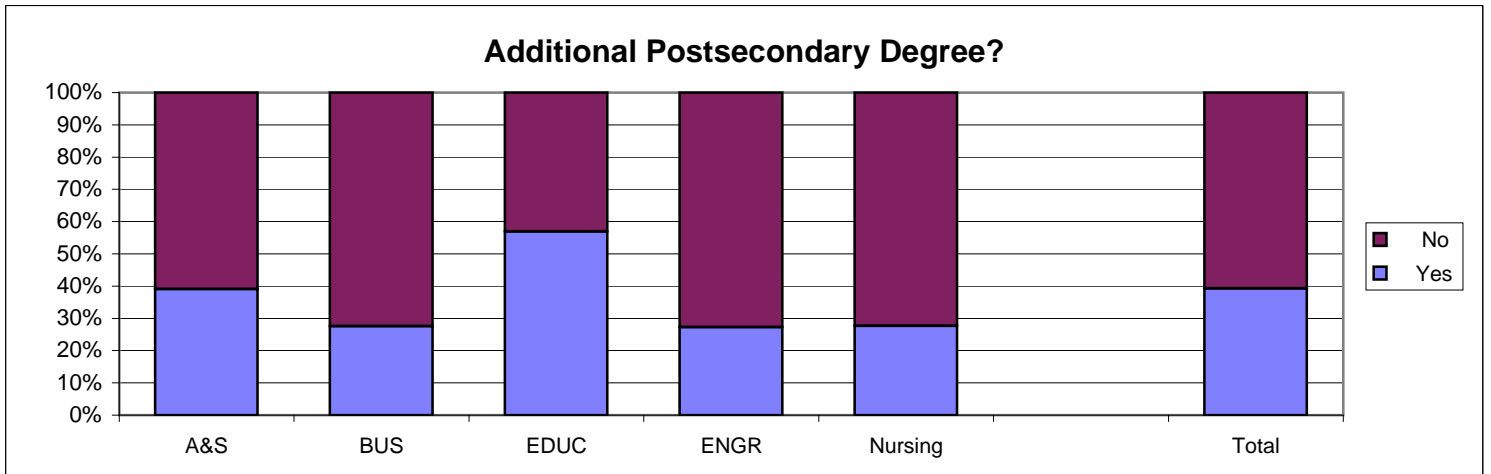


**Southern Illinois University Edwardsville**  
**Survey of 2000 Baccalaureate Graduates -- Nine Years Out**  
**Survey Responses -- Part II**  
*Education Questions*

<b>School Detail</b>	<b>A&amp;S</b>	<b>BUS</b>	<b>EDUC</b>	<b>ENGR</b>	<b>Nursing</b>	<b>Total</b>
Number of Survey Respondents	138	69	94	22	47	370
10. Additional Postsecondary Degree?						
Yes **	39.1%	27.5%	57.0%	27.3%	27.7%	39.3%
No	60.9%	72.5%	43.0%	72.7%	72.3%	60.7%
Number Responding	138	69	93	22	47	369
If Yes, What Degree?						
Associate's	2.0%	0.0%	0.0%	0.0%	0.0%	0.7%
Second Bachelor's	5.9%	16.7%	3.8%	0.0%	0.0%	5.8%
Academic Master's (MA, MS, MEd, etc)	51.0%	16.7%	63.5%	80.0%	46.2%	51.8%
Prof. Master's or Ed Specialist	29.4%	61.1%	26.9%	20.0%	46.2%	33.8%
Medicine (MD, OD)	0.0%	0.0%	0.0%	0.0%	0.0%	0.0%
Health Prof. (dentistry, pharmacy, etc.)	7.8%	0.0%	0.0%	0.0%	0.0%	2.9%
Theology/Divinity	0.0%	0.0%	0.0%	0.0%	0.0%	0.0%
Law (LLB, JD)	0.0%	5.6%	0.0%	0.0%	0.0%	0.7%
Doctorate (PhD, EdD, DA, DBA, etc.)	2.0%	0.0%	1.9%	0.0%	0.0%	1.4%
Other	2.0%	0.0%	3.8%	0.0%	7.7%	2.9%
Number Responding	51	18	52	5	13	139
11. Currently Pursuing a Degree?						
Yes, Full Time **	8.8%	0.0%	8.7%	0.0%	8.7%	6.6%
Yes, Part Time **	12.4%	7.4%	18.5%	4.5%	8.7%	12.1%
No	78.8%	92.6%	72.8%	95.5%	82.6%	81.4%
Number Responding	137	68	92	22	46	365
If Yes, What Degree?						
Associate's	3.6%	0.0%	0.0%	0.0%	0.0%	1.6%
Second Bachelor's	0.0%	0.0%	4.5%	0.0%	0.0%	1.6%
Academic Master's (MA, MS, MEd, etc)	39.3%	40.0%	45.5%	0.0%	28.6%	39.7%
Prof. Master's or Ed Specialist	25.0%	40.0%	22.7%	100.0%	71.4%	31.7%
Medicine (MD, OD)	0.0%	0.0%	0.0%	0.0%	0.0%	0.0%
Health Prof. (dentistry, pharmacy, etc.)	0.0%	0.0%	4.5%	0.0%	0.0%	1.6%
Theology/Divinity	0.0%	0.0%	0.0%	0.0%	0.0%	0.0%
Law (LLB, JD)	0.0%	0.0%	0.0%	0.0%	0.0%	0.0%
Doctorate (PhD, EdD, DA, DBA, etc.)	25.0%	20.0%	18.2%	0.0%	0.0%	19.0%
Other	7.1%	0.0%	4.5%	0.0%	0.0%	4.8%
Number Responding	28	5	22	1	7	63
12. Bachelor's Degree Preparation for Additional Degree						
Very Well	24.3%	36.4%	31.3%	16.7%	42.1%	29.8%
Well	38.6%	40.9%	40.6%	83.3%	21.1%	39.2%
Adequately	24.3%	18.2%	26.6%	0.0%	36.8%	24.9%
Inadequately	8.6%	4.5%	0.0%	0.0%	0.0%	3.9%
Poorly	4.3%	0.0%	0.0%	0.0%	0.0%	1.7%
Very Poorly	0.0%	0.0%	1.6%	0.0%	0.0%	0.6%
Number Responding	70	22	64	6	19	181

\*\* The responses marked with asterisks each lead to a related question which was to be answered only by those who selected the asterisked responses.

## 2000 Baccalaureat Graduates Nine Years Out Additional Education





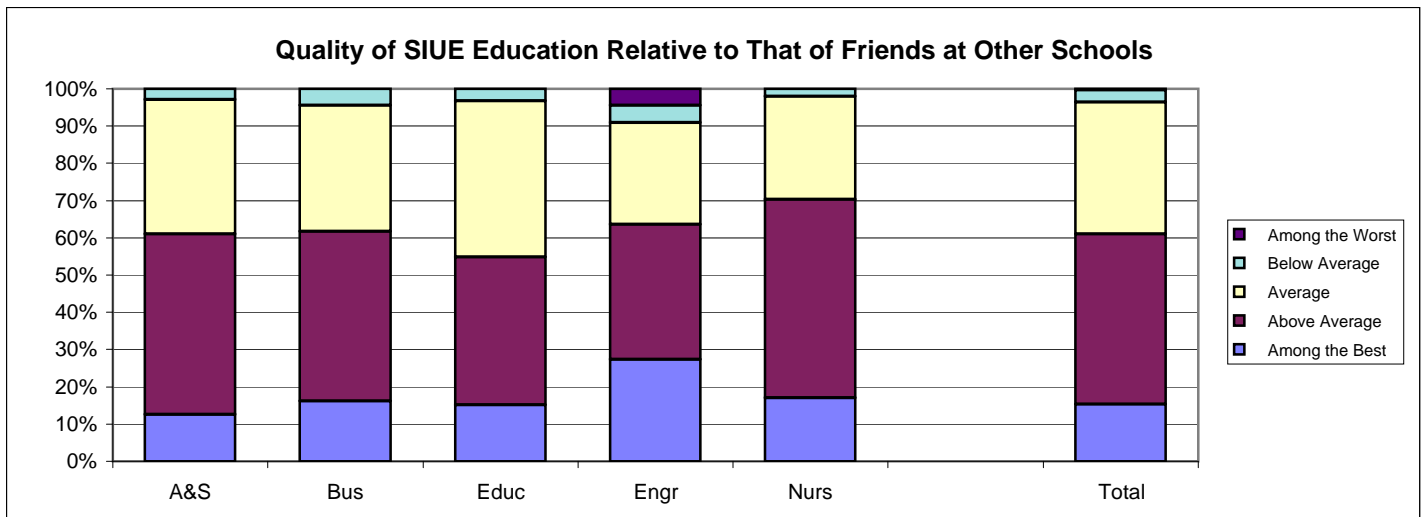
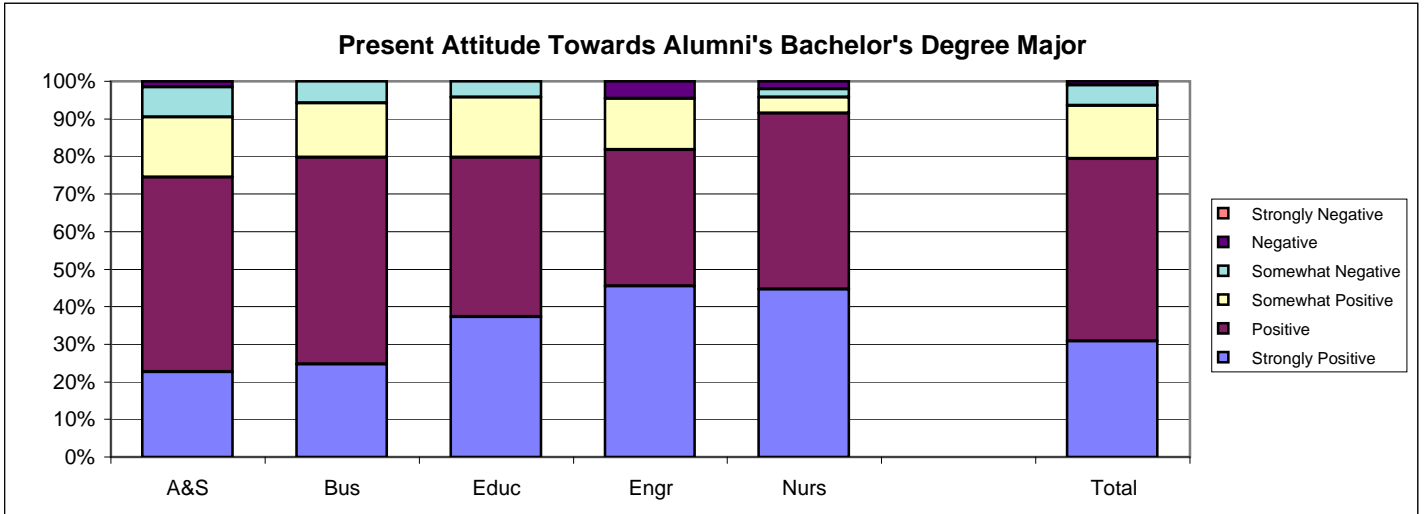
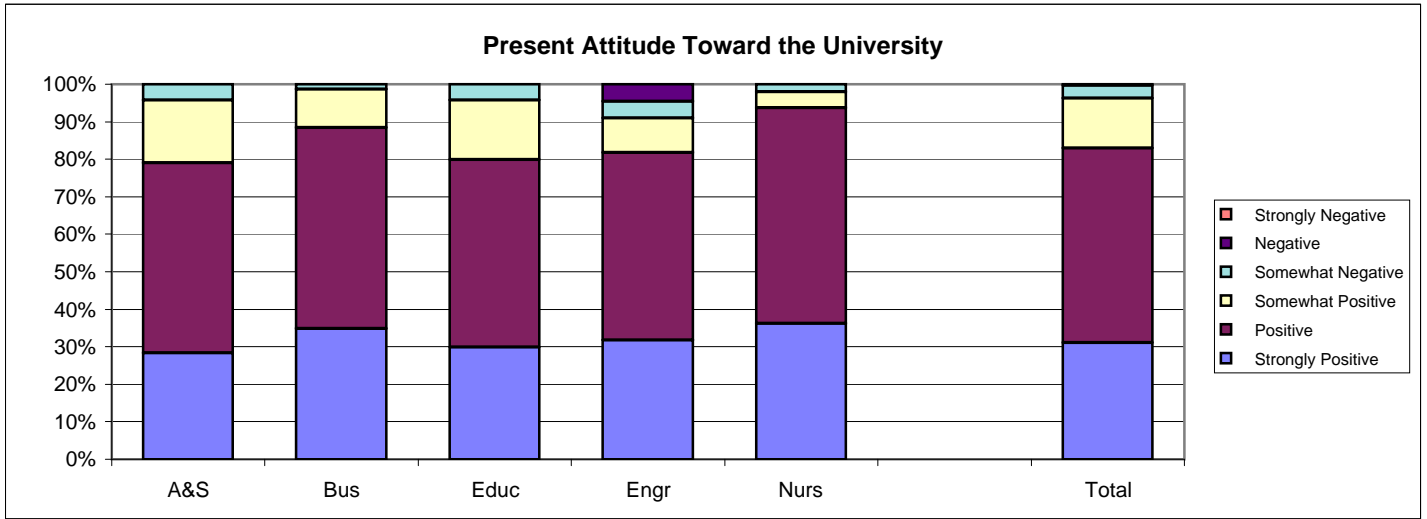
**Southern Illinois University Edwardsville**  
**Survey of 2000 Baccalaureate Graduates -- Nine Years Out**  
**Survey Responses -- Part III**  
*Satisfaction Questions*

<b>School Detail</b>	<b>A&amp;S</b>	<b>BUS</b>	<b>EDUC</b>	<b>ENGR</b>	<b>NURS</b>	<b>Total</b>
Number of Survey Respondents	138	69	94	22	47	370
13. Present Attitude Towards the University						
Strongly Positive	28.3%	34.8%	29.8%	31.8%	36.2%	31.1%
Positive	50.7%	53.6%	50.0%	50.0%	57.4%	51.9%
Somewhat Positive	16.7%	10.1%	16.0%	9.1%	4.3%	13.2%
Somewhat Negative	4.3%	1.4%	4.3%	4.5%	2.1%	3.5%
Negative	0.0%	0.0%	0.0%	4.5%	0.0%	0.3%
Strongly Negative	0.0%	0.0%	0.0%	0.0%	0.0%	0.0%
Number Responding	138	69	94	22	47	370
14. Present Attitude Towards your Bachelor's Degree Major						
Strongly Positive	22.6%	24.6%	37.2%	45.5%	44.7%	30.9%
Positive	51.8%	55.1%	42.6%	36.4%	46.8%	48.5%
Somewhat Positive	16.1%	14.5%	16.0%	13.6%	4.3%	14.1%
Somewhat Negative	8.0%	5.8%	4.3%	0.0%	2.1%	5.4%
Negative	1.5%	0.0%	0.0%	4.5%	2.1%	1.1%
Strongly Negative	0.0%	0.0%	0.0%	0.0%	0.0%	0.0%
Number Responding	137	69	94	22	47	369

2/8/2010

# 2000 Baccalaureate Graduates Nine Years Out

## Satisfaction



**Southern Illinois University Edwardsville**  
**Survey of 2000 Baccalaureate Graduates -- Nine Years Out**  
**Survey Responses -- Part IV**  
*Educational Effectiveness Questions*

<b>School Detail</b>	<b>A&amp;S</b>	<b>BUS</b>	<b>EDUC</b>	<b>ENGR</b>	<b>NURS</b>	<b>Total</b>
Number of Survey Respondents	138	69	94	22	47	370
<b>15. Helpfulness of University Experiences in:</b>						
<b>A. Developing Critical Thinking Ability</b>						
Extremely Helpful	19.1%	13.0%	18.3%	27.3%	17.0%	18.0%
Very Helpful	50.0%	58.0%	45.2%	36.4%	51.1%	49.6%
Moderately Helpful	23.5%	27.5%	33.3%	27.3%	23.4%	27.0%
Slightly Helpful	5.9%	1.4%	3.2%	9.1%	8.5%	4.9%
Not Helpful	1.5%	0.0%	0.0%	0.0%	0.0%	0.5%
Number Responding	136	69	93	22	47	367
<b>B. Developing Sense of Ethics</b>						
Extremely Helpful	14.2%	10.1%	12.1%	0.0%	14.9%	12.1%
Very Helpful	44.0%	27.5%	39.6%	50.0%	40.4%	39.7%
Moderately Helpful	29.1%	44.9%	28.6%	27.3%	27.7%	31.7%
Slightly Helpful	5.2%	11.6%	15.4%	13.6%	12.8%	10.5%
Not Helpful	7.5%	5.8%	4.4%	9.1%	4.3%	6.1%
Number Responding	134	69	91	22	47	363
<b>C. Understanding People with Different Backgrounds, Habits, Values, Appearances and Abilities</b>						
Extremely Helpful	24.1%	15.9%	25.0%	9.1%	25.5%	22.1%
Very Helpful	49.6%	43.5%	38.0%	27.3%	44.7%	43.6%
Moderately Helpful	21.2%	24.6%	28.3%	50.0%	14.9%	24.5%
Slightly Helpful	2.9%	13.0%	6.5%	4.5%	8.5%	6.5%
Not Helpful	2.2%	2.9%	2.2%	9.1%	6.4%	3.3%
Number Responding	137	69	92	22	47	367
<b>D. Becoming a More Active Citizen</b>						
Extremely Helpful	12.4%	7.2%	10.9%	4.5%	4.3%	9.5%
Very Helpful	33.6%	20.3%	27.2%	4.5%	31.9%	27.5%
Moderately Helpful	32.1%	33.3%	32.6%	50.0%	42.6%	34.9%
Slightly Helpful	11.7%	20.3%	21.7%	22.7%	14.9%	16.9%
Not Helpful	10.2%	18.8%	7.6%	18.2%	6.4%	11.2%
Number Responding	137	69	92	22	47	367
<b>E. Improving Quality of Life (aside from financial benefits)</b>						
Extremely Helpful	15.4%	11.8%	19.4%	13.6%	8.5%	14.8%
Very Helpful	41.2%	33.8%	41.9%	22.7%	40.4%	38.8%
Moderately Helpful	30.9%	38.2%	18.3%	40.9%	36.2%	30.3%
Slightly Helpful	8.1%	11.8%	14.0%	18.2%	8.5%	10.9%
Not Helpful	4.4%	4.4%	6.5%	4.5%	6.4%	5.2%
Number Responding	136	68	93	22	47	366
<b>F. Developing Reasoning Skills</b>						
Extremely Helpful	19.0%	14.5%	14.0%	18.2%	14.9%	16.3%
Very Helpful	49.6%	62.3%	45.2%	54.5%	44.7%	50.5%
Moderately Helpful	23.4%	18.8%	31.2%	18.2%	29.8%	25.0%
Slightly Helpful	5.1%	4.3%	9.7%	9.1%	6.4%	6.5%
Not Helpful	2.9%	0.0%	0.0%	0.0%	4.3%	1.6%
Number Responding	137	69	93	22	47	368

**Southern Illinois University Edwardsville**  
**Survey of 2000 Baccalaureate Graduates -- Nine Years Out**  
**Survey Responses -- Part IV**  
*Educational Effectiveness Questions*

<b>School Detail, cont.</b>	<b>A&amp;S</b>	<b>BUS</b>	<b>EDUC</b>	<b>ENGR</b>	<b>NURS</b>	<b>Total</b>
<b>G. Viewing Problems from Different Perspectives</b>						
Extremely Helpful	20.4%	26.5%	19.6%	31.8%	10.6%	20.5%
Very Helpful	48.2%	34.7%	46.7%	22.7%	48.9%	44.4%
Moderately Helpful	24.1%	32.7%	25.0%	31.8%	27.7%	26.5%
Slightly Helpful	5.8%	6.1%	8.7%	13.6%	8.5%	7.5%
Not Helpful	1.5%	0.0%	0.0%	0.0%	4.3%	1.2%
Number Responding	137	49	92	22	47	367
<b>H. Developing Ability to Solve Problems</b>						
Extremely Helpful	18.2%	21.7%	14.1%	40.9%	17.0%	19.1%
Very Helpful	44.5%	58.0%	44.6%	36.4%	40.4%	46.0%
Moderately Helpful	29.2%	14.5%	34.8%	18.2%	27.7%	27.0%
Slightly Helpful	6.6%	5.8%	6.5%	4.5%	10.6%	6.8%
Not Helpful	1.5%	0.0%	0.0%	0.0%	4.3%	1.1%
Number Responding	137	69	92	22	47	367
<b>I. Making Informed Decisions as a Citizen</b>						
Extremely Helpful	14.6%	7.2%	10.9%	4.5%	8.5%	10.9%
Very Helpful	41.6%	50.7%	35.9%	31.8%	40.4%	41.1%
Moderately Helpful	31.4%	27.5%	40.2%	50.0%	31.9%	34.1%
Slightly Helpful	8.0%	10.1%	12.0%	4.5%	12.8%	9.8%
Not Helpful	4.4%	4.3%	1.1%	9.1%	6.4%	4.1%
Number Responding	137	69	92	22	47	367
<b>J. Developing Writing Skills</b>						
Extremely Helpful	26.5%	26.1%	20.4%	0.0%	21.3%	22.6%
Very Helpful	39.7%	49.3%	36.6%	27.3%	44.7%	40.6%
Moderately Helpful	22.8%	17.4%	31.2%	45.5%	27.7%	25.9%
Slightly Helpful	8.1%	7.2%	11.8%	13.6%	6.4%	9.0%
Not Helpful	2.9%	0.0%	0.0%	13.6%	0.0%	1.9%
Number Responding	136	69	93	22	47	367
<b>K. Developing Oral Communication Skills</b>						
Extremely Helpful	23.4%	29.0%	19.6%	9.1%	17.0%	21.8%
Very Helpful	44.5%	44.9%	38.0%	27.3%	48.9%	42.5%
Moderately Helpful	24.8%	20.3%	34.8%	40.9%	25.5%	27.5%
Slightly Helpful	5.1%	5.8%	6.5%	13.6%	8.5%	6.5%
Not Helpful	2.2%	0.0%	1.1%	9.1%	0.0%	1.6%
Number Responding	137	69	92	22	47	367
<b>L. Developing Knowledge of Scientific and Technological Developments</b>						
Extremely Helpful	26.5%	13.0%	12.9%	27.3%	8.5%	18.5%
Very Helpful	28.6%	40.6%	28.0%	40.9%	53.2%	34.4%
Moderately Helpful	30.6%	29.0%	38.7%	31.8%	36.2%	33.1%
Slightly Helpful	9.5%	11.6%	17.2%	0.0%	2.1%	10.3%
Not Helpful	4.8%	5.8%	3.2%	0.0%	0.0%	3.7%
Number Responding	147	69	93	22	47	368
<b>16. Undergraduate Education Broadened Interest Beyond Subjects in Major</b>						
Strongly Agree	23.2%	10.1%	17.0%	22.7%	14.9%	18.1%
Agree	52.2%	63.8%	48.9%	18.2%	53.2%	51.6%
Neutral	19.6%	24.6%	27.7%	45.5%	29.8%	25.4%
Disagree	4.3%	0.0%	5.3%	4.5%	2.1%	3.5%
Strongly Disagree	0.7%	1.4%	1.1%	9.1%	0.0%	1.4%
Number Responding	138	69	94	22	47	370

**Southern Illinois University Edwardsville**  
**Survey of 2000 Baccalaureate Graduates -- Nine Years Out**  
**Survey Responses -- Part IV**  
*Educational Effectiveness Questions*

<b>School Detail, cont.</b>	<b>A&amp;S</b>	<b>BUS</b>	<b>EDUC</b>	<b>ENGR</b>	<b>NURS</b>	<b>Total</b>
<b>17. Importance of College Education to:</b>						
A. Personal Life						
Very Important	52.9%	43.5%	57.4%	45.5%	66.0%	53.5%
Moderately Important	32.6%	43.5%	30.9%	40.9%	25.5%	33.8%
Slightly Important	9.4%	7.2%	7.4%	4.5%	8.5%	8.1%
Not Important	5.1%	5.8%	4.3%	9.1%	0.0%	4.6%
Number Responding	138	69	94	22	47	370
B. Community Life						
Very Important	37.0%	20.3%	38.7%	18.2%	25.5%	31.7%
Moderately Important	31.9%	43.5%	37.6%	40.9%	53.2%	38.8%
Slightly Important	21.7%	23.2%	15.1%	22.7%	19.1%	20.1%
Not Important	9.4%	13.0%	8.6%	18.2%	2.1%	9.5%
Number Responding	138	69	93	22	47	369
C. Professional Life						
Very Important	73.9%	62.3%	84.9%	81.8%	78.7%	75.6%
Moderately Important	17.4%	31.9%	10.8%	13.6%	14.9%	17.9%
Slightly Important	5.8%	4.3%	3.2%	0.0%	2.1%	4.1%
Not Important	2.9%	1.4%	1.1%	4.5%	4.3%	2.4%
Number Responding	138	69	93	22	47	369
<b>18. Quality of SIUE Education Relative to That of Friends at Other Schools</b>						
Among the Best	12.5%	16.2%	15.1%	27.3%	17.0%	15.3%
Above Average	48.5%	45.6%	39.8%	36.4%	53.2%	45.6%
Average	36.0%	33.8%	41.9%	27.3%	27.7%	35.5%
Below Average	2.9%	4.4%	3.2%	4.5%	2.1%	3.3%
Among the Worst	0.0%	0.0%	0.0%	4.5%	0.0%	0.3%
Number Responding	136	68	93	22	47	366
<b>19. Involvement Since Bachelor's Degree with:</b>						
A. Organized, Formal, Career Related Learning (non-degree)						
Currently Involved	31.2%	24.6%	41.9%	27.3%	46.7%	34.3%
Have Been Involved	52.9%	58.0%	43.0%	59.1%	40.0%	50.1%
Never Involved	15.9%	17.4%	15.1%	13.6%	13.3%	15.5%
Number Responding	138	69	93	22	45	367
B. Personal Enrichment Studies						
Currently Involved	26.8%	17.4%	19.4%	0.0%	17.8%	20.4%
Have Been Involved	48.6%	40.6%	49.5%	59.1%	62.2%	49.6%
Never Involved	24.6%	42.0%	31.2%	40.9%	20.0%	30.0%
Number Responding	138	69	93	22	45	367
C. Professional Activities or Organizations						
Currently Involved	37.7%	31.9%	53.3%	31.8%	44.4%	41.0%
Have Been Involved	42.0%	50.7%	29.3%	40.9%	40.0%	40.2%
Never Involved	20.3%	17.4%	17.4%	27.3%	15.6%	18.9%
Number Responding	138	69	92	22	45	366
D. Volunteer Work / Community Svc Activities or Organizations						
Currently Involved	34.3%	23.2%	38.7%	36.4%	20.0%	31.4%
Have Been Involved	46.7%	52.2%	43.0%	27.3%	43.6%	45.2%
Never Involved	19.0%	24.6%	18.3%	36.4%	36.4%	23.4%
Number Responding	137	69	93	22	55	366

**Southern Illinois University Edwardsville**  
**Survey of 2000 Baccalaureate Graduates -- Nine Years Out**  
**Survey Responses -- Part IV**  
*Educational Effectiveness Questions*

<b>School Detail, cont.</b>	<b>A&amp;S</b>	<b>BUS</b>	<b>EDUC</b>	<b>ENGR</b>	<b>NURS</b>	<b>Total</b>
<b>E. Social / Recreational Activities or Organizations</b>						
Currently Involved	38.0%	29.4%	35.5%	45.5%	15.9%	33.5%
Have Been Involved	42.3%	54.4%	49.5%	36.4%	56.8%	47.8%
Never Involved	19.7%	16.2%	15.1%	18.2%	27.3%	18.7%
Number Responding	137	68	93	22	44	364
<b>F. Political Activities or Organizations</b>						
Currently Involved	15.2%	4.3%	13.0%	9.1%	4.3%	10.9%
Have Been Involved	32.6%	21.7%	22.8%	31.8%	17.4%	26.2%
Never Involved	52.2%	73.9%	64.1%	59.1%	78.3%	62.9%
Number Responding	138	69	92	22	46	367
<b>G. Religious / Ethical Activities or Organizations</b>						
Currently Involved	37.0%	33.3%	39.8%	36.4%	41.3%	37.5%
Have Been Involved	28.3%	29.0%	25.8%	36.4%	32.6%	28.8%
Never Involved	34.8%	37.7%	34.4%	27.3%	26.1%	33.7%
Number Responding	138	69	93	22	46	368
<b>H. Support or Participation in the Arts (music, drama, dance, art)</b>						
Currently Involved	29.0%	8.7%	25.8%	9.1%	11.1%	21.0%
Have Been Involved	42.0%	42.0%	23.7%	27.3%	42.2%	36.5%
Never Involved	29.0%	49.3%	50.5%	63.6%	46.7%	42.5%
Number Responding	138	69	93	22	45	367
<b>20. The Three Issues Considered Most Important for SIUE</b>						
<b>A. Finding New Ways to Deliver Education</b>						
Yes, One of the Three Most Important	26.6%	38.0%	36.2%	57.1%	30.6%	33.1%
Number Responding	29	19	25	8	11	92
<b>B. Adding Additional Graduate Program:</b>						
Yes, One of the Three Most Important	58.6%	11.3%	34.3%	10.0%	23.7%	33.6%
Number Responding	51	7	24	2	9	93
<b>C. Enhancing Programs for Personal Enrichment</b>						
Yes, One of the Three Most Important	16.9%	9.5%	14.6%	4.8%	6.8%	12.8%
Number Responding	20	6	12	1	3	42
<b>D. Enhancing Professional Development Opportunities</b>						
Yes, One of the Three Most Important	70.4%	115.6%	67.9%	37.5%	56.7%	72.1%
Number Responding	57	37	38	6	17	155
<b>E. Holding Down the Cost of Tuition and Fee</b>						
Yes, One of the Three Most Important	263.2%	176.0%	248.1%	214.3%	683.3%	259.2%
Number Responding	100	44	67	15	41	267
<b>F. Improving Students' Preparation for Employment</b>						
Yes, One of the Three Most Important	112.3%	176.0%	129.3%	175.0%	176.5%	137.2%
Number Responding	73	44	53	14	30	214
<b>G. More Effectively Meeting the Training Needs of Employers</b>						
Yes, One of the Three Most Important	19.0%	53.3%	25.3%	144.4%	42.4%	33.1%
Number Responding	22	24	19	13	14	92
<b>H. Becoming More Efficient and Cost Effective</b>						
Yes, One of the Three Most Important	43.8%	23.2%	46.9%	37.5%	51.6%	40.7%
Number Responding	42	13	30	6	16	107
<b>I. Strengthening International Studies, Programs &amp; Experience</b>						
Yes, One of the Three Most Important	10.4%	19.0%	8.0%	4.8%	0.0%	9.5%
Number Responding	13	11	7	1	0	32

## **Appendix A**

Sample Questionnaire

# SOUTHERN ILLINOIS UNIVERSITY EDWARDSVILLE

## SURVEY OF 2000 BACCALAUREATE GRADUATES NINE YEARS AFTER GRADUATION

*Most of the questions in this survey can be answered simply by circling the appropriate number. We hope you will give us your help and valuable input so that we can design programs that better serve the needs of SIUE students. PLEASE ANSWER THESE QUESTIONS ONLY IN REGARD TO THE SIUE UNDERGRADUATE DEGREE YOU RECEIVED IN 2000. Your individual responses to this questionnaire will be kept completely confidential. Thank you for your cooperation. Please return this survey in the envelope provided.*

### I. Employment

1. Are you currently employed (including self-employed)?

- |                  |  |
|------------------|--|
| 1 Yes, full-time | 3 No, but <u>am</u> seeking employment     |
| 2 Yes, part-time | 4 No, and <u>am not</u> seeking employment |

If you are NOT employed (responses 3 and 4), skip to *Section II*.

2. What is the Zip Code of your place of employment (e.g., your actual workplace, not corporate headquarters)? \_\_\_\_\_

3. How would you classify your primary employer?

- |  |  |
|--|--|
| 1 Self-employed or private practice                    | 6 Health agency (e.g., hospital, clinic) |
| 2 Business (industrial, commercial or service)         | 7 Federal, state, or local government    |
| 3 Professional firm (e.g., engineering, law)           | 8 Armed services                         |
| 4 College or university                                | 9 Non-profit (non-government)            |
| 5 Elementary/secondary school (including cooperatives) | 10 Other (please specify) _____          |

4. How satisfied are you with your current job?

- |                  |                         |                     |
|------------------|-------------------------|---------------------|
| 1 Very Satisfied | 3 Somewhat Satisfied    | 5 Dissatisfied      |
| 2 Satisfied      | 4 Somewhat Dissatisfied | 6 Very Dissatisfied |

5. How closely related is your current job to your bachelor's degree major?

- |                   |           |             |
|-------------------|-----------|-------------|
| 1 Closely Related | 2 Related | 3 Unrelated |
|-------------------|-----------|-------------|

If you marked "3" (unrelated), is this by choice?    1 Yes    2 No

6. For how many different employers (companies, firms, agencies, schools, etc. — not individual "bosses") have you worked since you earned your bachelor's degree?

- |       |                 |
|-------|-----------------|
| 1 One | 3 Three to six  |
| 2 Two | 4 More than six |

7. What is your annual earned income before taxes in your current job? \_\_\_\_\_

8. From your current perspective, how well did your bachelor's degree prepare you for the career path you are following?

- |             |        |              |                |          |               |
|-------------|--------|--------------|----------------|----------|---------------|
| 1 Very Well | 2 Well | 3 Adequately | 4 Inadequately | 5 Poorly | 6 Very poorly |
|-------------|--------|--------------|----------------|----------|---------------|



9. Please circle on the lists below both your **primary occupation** (what you do) and the **industry** in which you are employed (where you do it). Although some occupations typically work within one industry, they may be employed in other industries also. An example would be a school nurse — Health: Registered Nurses (11) in Educational Services (15). Examples of the types of occupations contained in each category are provided in italics.

Please write in your actual job title \_\_\_\_\_ (optional)

### Occupational Categories

- |   |  |
|---|--|
| <p><b>01 Management</b> (<i>such as Executives, Financial Managers, Human Resources Managers, Sales &amp; Agricultural Managers, Educational Administrators, Health Administrators</i>)</p> <p><b>02 Business Operations</b> (<i>such as Buyers &amp; Purchasing Agents; Insurance Claims Adjusters/Examiners; Human Resources, Training, &amp; Labor Relations Specialists; Management Analysts</i>)</p> <p><b>03 Financial Specialists</b> (<i>such as Accountants, Assessors, Appraisers, Financial &amp; Credit Analysts, Underwriters, Loan Counselors/Officers</i>)</p> <p><b>04 Computer Specialists</b> (<i>such as Computer &amp; Information Scientists, Programmers, Software Specialists, Database &amp; Network Administrators and System Analysts</i>)</p> <p><b>05 Mathematical Scientists and Technicians</b> (<i>such as Mathematicians, Statisticians, Actuaries, &amp; Mathematical Technicians</i>)</p> <p><b>06 Architects, Surveyors, and Cartographers</b></p> <p><b>07 Engineers and Related Technicians</b> (<i>such as Agricultural, Civil, Computer Hardware, Electrical, Industrial, Mechanical, Materials &amp; Construction Engineers and Technicians</i>)</p> <p><b>08 Life and Physical Scientists and Technicians</b> (<i>such as Agricultural &amp; Food Scientists, Biologists, Medical Scientists, Chemists, Physicists, Atmospheric &amp; Environmental Scientists, and Related Technicians</i>)</p> <p><b>09 Social Scientists</b> (<i>such as Economists, Psychologists, Market &amp; Survey Researchers, Geographers, Historians, Sociologists, Anthropologists, Political Scientists &amp; Urban Planners</i>)</p> <p><b>10 Health: Doctors</b> (<i>such as Physicians &amp; Surgeons, Dentists, Veterinarians, Optometrists, Podiatrists, and Chiropractors</i>)</p> <p><b>11 Health: Registered Nurses</b></p> <p><b>12 Health: Therapists</b> (<i>such as Occupational, Physical, Recreational, &amp; Speech Therapists</i>)</p> <p><b>13 Health: Other Health Practitioners, Professionals, and Support Workers</b> (<i>such as Pharmacists, Dieticians, Physician Assistants, and all other Technicians/Assistants/Aides</i>)</p> <p><b>14 Community and Social Service</b> (<i>such as Counselors, Social Workers, Community &amp; Religious Workers, Probation Officers</i>)</p> <p><b>15 Legal: Attorneys/Judges</b></p> <p><b>16 Legal: Legal Support Workers</b> (<i>such as Inspectors &amp; Examiners, Legal Assistants, Safety &amp; Health Inspectors</i>)</p> <p><b>17 Education: Early Childhood Teachers</b> (<i>such as Day Care, Pre-School, and Kindergarten Teachers</i>)</p> | <p><b>18 Education: Elementary School Teachers</b></p> <p><b>19 Education: Middle School Teachers</b></p> <p><b>20 Education: Secondary School Teachers</b></p> <p><b>21 Education: Special Education Teachers</b></p> <p><b>22 Education: Other, except Administrators (see #1)</b> (<i>such as Postsecondary Teachers, Vocational Teachers, Teaching &amp; Research Assistants, School Counselors, Other Teachers, Training Specialists, Aides &amp; Assistants</i>)</p> <p><b>23 Library Occupations</b> (<i>such as Librarians, Archivists, Curators, and Library Technicians</i>)</p> <p><b>24 Arts and Design Workers</b> (<i>such as Designers and Fine &amp; Craft Artists</i>)</p> <p><b>25 Entertainment, Performers, Sports and Related Workers</b> (<i>such as Musicians, Singers, Dancers, Actors, Producers, Directors, Composers, Athletes, Coaches, &amp; Referees</i>)</p> <p><b>26 Media and Communication Workers</b> (<i>such as Writers &amp; Editors, Announcers, News Analysts &amp; Reporters, Public Relation Specialists, and Media &amp; Communication Equipment Workers</i>)</p> <p><b>27 Sales</b> (<i>such as Real Estate, Retail, Insurance, &amp; Securities Sales Agents; Wholesale &amp; Manufacturing Sales Representatives; Telemarketers</i>)</p> <p><b>28 Office and Administration</b> (<i>such as Clerical &amp; Support Personnel, Clerks, Claims Examiners, Tellers, Scheduling &amp; Distribution Agents</i>)</p> <p><b>29 Protective Services</b> (<i>such as Fire Fighters, Correctional Officers, Police, Life Guards, Security Guards, Investigators</i>)</p> <p><b>30 Food Preparation and Serving</b> (<i>such as Cooks, Bartenders, Food Service Workers &amp; Servers</i>)</p> <p><b>31 Buildings and Grounds Maintenance</b> (<i>such as Janitors, Cleaners, Landscaping &amp; Groundskeeping Laborers</i>)</p> <p><b>32 Personal Care and Services</b> (<i>such as Flight Attendants, Child Care Workers, Hairstylists &amp; Personal Care Workers, Hotel &amp; Travel Industry Workers</i>)</p> <p><b>33 Farming, Fishing, and Forestry</b> (<i>such as Farm Workers, Animal Care Workers, Foresters, Loggers</i>)</p> <p><b>34 Construction and Extractive</b> (<i>such as Carpenters; Electricians; Painters; Construction, Oil &amp; Mining Workers; Plumbers</i>)</p> <p><b>35 Installation, Maintenance, and Repair</b> (<i>such as Telecommunications Workers; Automotive Repairers; Heating, Air Conditioning &amp; Refrigeration Mechanics &amp; Installers</i>)</p> <p><b>36 Production</b> (<i>such as Electrical &amp; Electronic Equipment Assemblers; Food, Metal, Plastics, Printing, &amp; Photography Industry Technicians &amp; Workers</i>)</p> <p><b>37 Transportation and Material Moving</b> (<i>such as Pilots, Drivers, Air Traffic Controllers</i>)</p> <p><b>38 Military</b> (<i>Officers &amp; Enlisted Personnel</i>)</p> |
|---|--|

### Industrial Categories

- |  |  |   |
|--|--|---|
| <p><b>01 Agriculture, Forestry, and Fishing</b></p> <p><b>02 Mining</b></p> <p><b>03 Utilities</b></p> <p><b>04 Construction</b></p> <p><b>05 Manufacturing</b></p> <p><b>06 Wholesale Trade</b></p> <p><b>07 Retail Trade</b></p> <p><b>08 Transportation</b></p> | <p><b>09 Information</b></p> <p><b>10 Finance and Insurance</b></p> <p><b>11 Real Estate and Rental and Leasing</b></p> <p><b>12 Professional, Scientific and Technical Services</b></p> <p><b>13 Management of Companies and Enterprises</b></p> <p><b>14 Administrative and Support, Waste Management and Remediation Services</b></p> | <p><b>15 Educational Services</b></p> <p><b>16 Health Care and Social Assistance</b></p> <p><b>17 Arts, Entertainment &amp; Recreation</b></p> <p><b>18 Accommodations and Food Svcs.</b></p> <p><b>19 Other Services (except Public Administration)</b></p> <p><b>20 Public Administration</b></p> |
|--|--|---|

## II. Education

10. Since completing your bachelor's degree, have you earned one or more additional post-secondary degrees?

- 1 Yes                      2 No

If you have completed an additional degree, please indicate all of the additional degrees you have earned since your bachelor's degree:

- |  |  |
|--|--|
| 01 Associate's   | 06 Health Professional (dentistry,<br>pharmacy, podiatry, optometry, etc.) |
| 02 Second Bachelor's   | 07 Theology/Divinity   |
| 03 Academic Master's (MA, MS, MEd, etc.)                                       | 08 Law (LLB, JD)   |
| 04 Professional Master's (MBA, MSW, MFA,<br>MPA, etc.) or Education Specialist | 09 Doctorate (PhD, EdD, DA, DBA, etc.)                                     |
| 05 Medicine (MD, DO)   | 10 Other, please specify:  |

11. Are you currently pursuing a postsecondary degree program?

- 1 Yes, full-time            2 Yes, part-time            3 No

If you are currently pursuing a degree, please indicate which degree below:

- |  |  |
|--|--|
| 01 Associate's   | 06 Health Professional (dentistry,<br>pharmacy, podiatry, optometry, etc.) |
| 02 Second Bachelor's   | 07 Theology/Divinity   |
| 03 Academic Master's (MA, MS, MEd, etc.)                                       | 08 Law (LLB, JD)   |
| 04 Professional Master's (MBA, MSW, MFA,<br>MPA, etc.) or Education Specialist | 09 Doctorate (PhD, EdD, DA, DBA, etc.)                                     |
| 05 Medicine (MD, DO)   | 10 Other, please specify:  |

12. In general, how well did your bachelor's degree program prepare you for your additional degree program?

- 1 Very Well    2 Well    3 Adequately    4 Inadequately    5 Poorly    6 Very poorly

## III. Satisfaction

13. What is your present attitude towards the University?

- 1 Strongly Positive    2 Positive    3 Somewhat Positive    4 Somewhat Negative    5 Negative    6 Strongly Negative

14. What is your present attitude towards your bachelor's degree major?

- 1 Strongly Positive    2 Positive    3 Somewhat Positive    4 Somewhat Negative    5 Negative    6 Strongly Negative

## IV. Educational Effectiveness

15. Listed below are some abilities often mentioned as important for personal and professional success in the 21st century. In your view, how effective were your University experiences in —

	Extremely Helpful	Very Helpful	Moderately Helpful	Slightly Helpful	Not Helpful
A. helping you to better develop your critical thinking ability?	1	2	3	4	5
B. helping you to better develop your sense of ethics?	1	2	3	4	5
C. contributing to a greater understanding of people with different backgrounds, habits, values, appearances, and abilities?	1	2	3	4	5
D. helping you to become a more active citizen?	1	2	3	4	5
E. improving the quality of your life aside from financial benefits?	1	2	3	4	5
F. helping you to better develop your reasoning skills?	1	2	3	4	5
G. helping you to better develop your capacity to view problems from different perspectives?	1	2	3	4	5
H. helping you to better develop your ability to solve problems?	1	2	3	4	5
I. helping you to better develop your ability to make informed decisions as a citizen?	1	2	3	4	5
J. helping you to better develop your writing skills?	1	2	3	4	5
K. helping you to better develop your oral communication skills?	1	2	3	4	5
L. helping you to better develop your knowledge of scientific and technological developments?	1	2	3	4	5

**IV. Educational Effectiveness** (continued)

16. My SIUE undergraduate education broadened my interest in issues beyond the subjects in my major.

1 Strongly Agree      2 Agree      3 Neutral      4 Disagree      5 Strongly Disagree

17. How important has your college education been to your —

	Very Important	Moderately Important	Slightly Important	Not Important
A. Personal Life	1	2	3	4
B. Community Life	1	2	3	4
C. Professional Life	1	2	3	4

18. How would you rate the quality of the education that you received from SIUE relative to the education that your friends and colleagues have received from other colleges or universities?

1 Among the Best      2 Above Average      3 Average      4 Below Average      5 Among the worst

19. Please indicate your involvement with each of the following since completing your bachelor's degree:

	Currently Involved	Have Been Involved	Never Involved
A. Organized, formal learning that is career related (non-degree)	1	2	3
B. Personal enrichment studies	1	2	3
C. Professional activities or organizations	1	2	3
D. Volunteer work / community service activities or organizations	1	2	3
E. Social/recreational activities or organizations	1	2	3
F. Political activities or organizations	1	2	3
G. Religious/ethical activities or organizations	1	2	3
H. Support or participation in the Arts ( <i>music, drama, dance, art</i> )	1	2	3

20. Listed below are some issues which the University will face in the next few years. Which three issues do you consider to be the most important for the University to address?

*Please circle three items.*

- A. Finding new ways to deliver instruction
- B. Adding additional graduate programs
- C. Enhancing programs for personal enrichment
- D. Enhancing professional development opportunities
- E. Holding down the cost of tuition and fees
- F. Improving students' preparation for employment
- G. More effectively meeting the training needs of employers
- H. Becoming more efficient and cost effective
- I. Strengthening international studies, programs, and experiences