

Southern Illinois University at Edwardsville
Survey of 2006 Baccalaureate Graduates -- One Year Out

Survey Results for Schools

April 2008

Survey Administered By
The Office of Undergraduate Assessment and Program Review

Survey Results Compiled By
The Office of Institutional Research and Studies

Southern Illinois University at Edwardsville

Survey of 2006 Baccalaureate Graduates -- One Year Out

Contents

Introduction

Methodology

Survey Population and Respondents

- Charts: *2006 Baccalaureate Recipients, Profile*
- *Gender*
 - *Race/Ethnic*
 - *Age at Graduation*
 - *Matriculation Status*
 - *Time to Degree for New Freshmen*
 - *Time to Degree for New Transfers*

Table: *Comparison of All Graduates to Survey Respondents*

Survey Results

- Charts: *2006 Baccalaureate Graduates One Year Out, Satisfaction*
- *Present Attitude Toward the University*
 - *Present Attitude Towards Alumni=s Bachelor=s Degree Major*
 - *Quality of SIUE Education Relative to That of Friends at Other Schools*

- 2006 Baccalaureate Graduates One Year Out, Additional Education*
- *Enrolled Since Bachelors Degree*
 - *How Well Bachelor=s Degree Prepared Alumni for Additional Degree*

- 2006 Baccalaureate Graduates One Year Out, Employment*
- *Employment Status*
 - *Place of Employment*
 - *Job in Field Related to Major?*
 - *Job Satisfaction*
 - *How Well Bachelor=s Degree Program Prepared Alumni for Present Job*
 - *Mean Salary of Alumni Employed Full Time*

- Helpfulness of University Experiences in:*
- *Developing Critical Thinking Ability*
 - *Developing Sense of Ethics*
 - *Understanding People with Different Backgrounds*
 - *Becoming a more Active Citizen*
 - *Improving Quality of Life (aside from financial benefits)*
 - *Developing Reasoning Skills*
 - *Viewing Problems from Different Perspectives*
 - *Developing Ability to Solve Problems*

- *Making Informed Decisions as a Citizen*
- *Developing Writing Skills*
- *Developing Oral Communication Skills*
- *Developing Knowledge of Scientific and Technological Developments*

Tables:

<i>Part I</i>	<i>Employment Questions</i>
<i>Part II</i>	<i>Education Questions</i>
<i>Part III</i>	<i>Satisfaction Questions</i>
<i>Part IV</i>	<i>Educational Practices Questions</i>
<i>Part V</i>	<i>Program Quality Questions</i>
<i>Part VI</i>	<i>Educational Effectiveness Questions</i>

Questionnaire

Southern Illinois University Edwardsville Survey of 2006 Baccalaureate Graduates -- One Year Out

Introduction

This one-year out baccalaureate survey was done to provide data for the University's undergraduate program reviews and other planning uses, and to participate in the Illinois Board of Higher Education Baccalaureate Graduates= Follow-up System.

IBHE Survey Schedule and Population Definition		
Survey Year	Survey Type	Survey Group
1992	One-Year Out Survey	Class of >91
1993	Five-Year Out Survey	Class of >88
1994	Ten-Year Out Survey	Class of >84
1995	One-Year Out Survey	Class of >94
1996	Five-Year Out Survey	Class of >91
1997	Nine-Year Out Survey	Class of >88
1998	One-Year Out Survey	Class of >97
1999	Five-Year Out Survey	Class of >94
2000	Nine-Year Out Survey	Class of >91
2001	One-Year Out Survey	Class of >00
2002	Five-Year Out Survey	Class of >97
2003	Nine-Year Out Survey	Class of >94
2004	One-Year Out Survey	Class of '03
2005	Five-Year Out Survey	Class of '00
2006	Nine-Year Out Survey	Class of '97
2007	One-Year Out Survey	Class of '06
2008	Five-Year Out Survey	Class of '03
2009	Nine-Year Out Survey	Class of '00

After the first six years, the surveys were reviewed and changed, modifying some questions and value scales, and adding some additional questions.

The current survey was administered during the spring and summer of 2007 to calendar year 2006 baccalaureate graduates of SIUE. The questionnaire includes 18 questions common to all Illinois public universities. These are the first 18 questions in the survey, forming Parts I, II, III, and the beginning of Part IV (Employment Questions, Education Questions, Satisfaction Questions, and Educational Practices Questions). SIUE added to these one question on industry of employment and three additional questions on educational practices, and appended two additional parts to the survey to add questions about program quality, and educational effectiveness. (A questionnaire is included in Appendix A.)

Methodology

The survey questionnaire and a cover letter were adapted from the questionnaire and letter

developed for previous surveys. SIUE Alumni Services provided current addresses for calendar year 2006 graduates as determined from institutional records. The survey was distributed in May 2007 to May 2006 baccalaureate graduates and in August 2007 to August 2006 and December 2006 baccalaureate graduates. Each envelope included a cover letter, a questionnaire, and a postage-paid, pre-addressed return envelope. Each questionnaire was stamped with a sequential, identifying number which was also stamped on a listing of the graduates (this aided in identifying the surveys when returned).

On April 17, 2007 approximately two weeks before the first set of surveys were to be mailed, a postcard was sent to the 1,081 May 2006 baccalaureate graduates for whom addresses were available, notifying the alumni that they would be receiving a questionnaire and encouraging them to complete and return the survey. Surveys were mailed first class on April 30, 2007. On May 15st, approximately three weeks after the survey was mailed and when the rate of survey returns had decreased, a follow-up postcard requesting that the survey be returned was mailed to each student who had not returned his or her survey. On May 31th a second wave mailing of the surveys was sent to the 786 remaining non-respondents.

The second distribution began with the preliminary postcard mailed on August 7, 2007 to the 958 August and December 2006 baccalaureate graduates with known addresses. Surveys were mailed first class to this group on August 20, 2007 with a follow-up post card mailed to non-responders on September 4, 2007. A second wave mailing of the survey was sent to 718 non-responders on September 25, 2007.

Returned surveys began arriving on April 27th and continued through the summer and fall, with a few arriving as late as January 2008. As the surveys came in, each was matched with the corresponding stamped listing. The students' names were then checked against the alphabetic list of alumni to verify (or, if the alumnus chose not to provide the identification number, to obtain) the student identification number. The student identification number was the key which allowed merging of survey data with administrative records (e.g., biographic, graduation, matriculation, and enrollment information).

Southern Illinois University Edwardsville
Survey of 2006 Baccalaureate Graduates -- One Year Out

Survey Population and Respondents

	Number of Graduates
2006 Baccalaureate Degrees	2,087
Less persons who received 2 baccalaureate degrees	26
2006 Baccalaureate Graduates	2,061
Less Graduates with No Address Available *	23
Graduates Surveyed	2,038
Less Non-Deliverable Surveys	103
Less Non-Responding Graduates	1,332
Survey Respondents	603
Gross Response Rate (Respondents/Total Surveyed)	29.59%
Adjusted Response Rate (Respondents/Delivered Surveys)	31.16%

* Includes deceased alumni, foreign addresses and known bad addresses.

Southern Illinois University Edwardsville
Survey of 2006 Baccalaureate Graduates -- One Year Out

Comparison of All Graduates to Survey Respondents

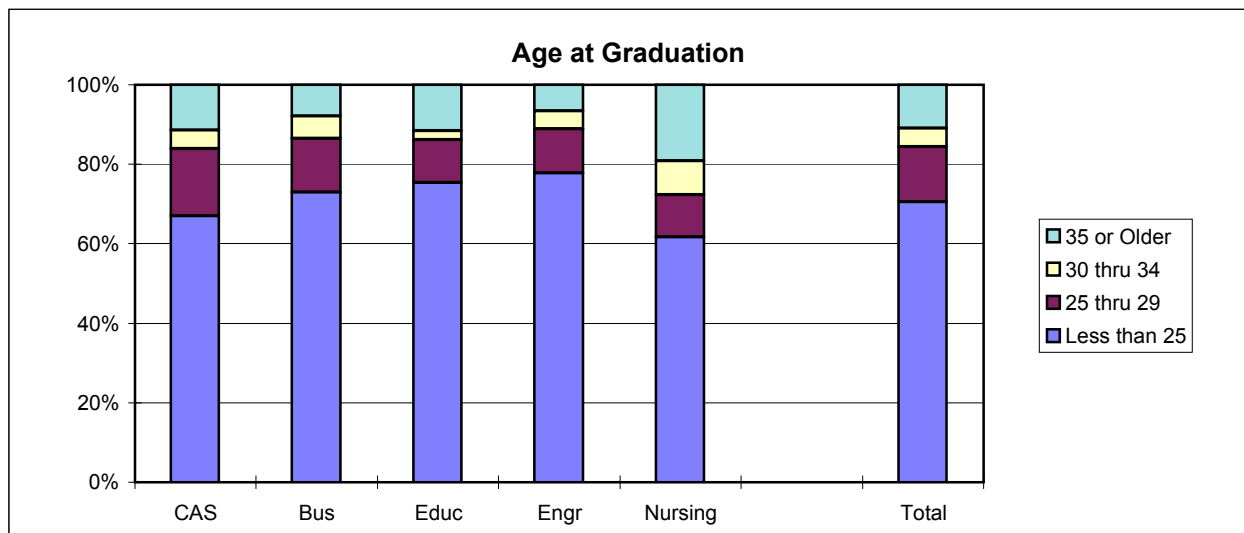
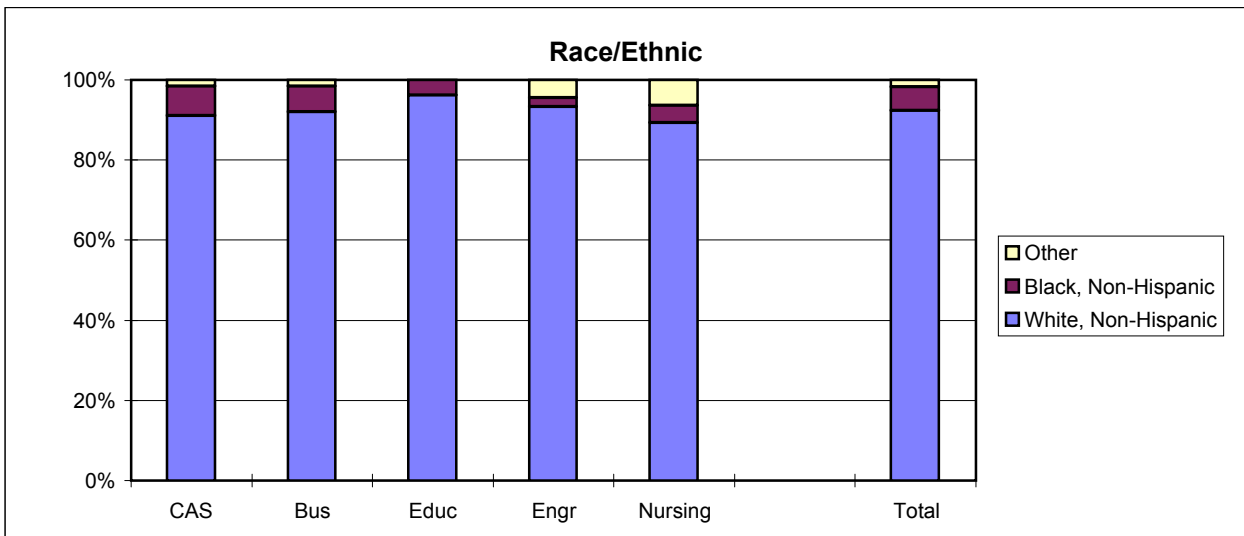
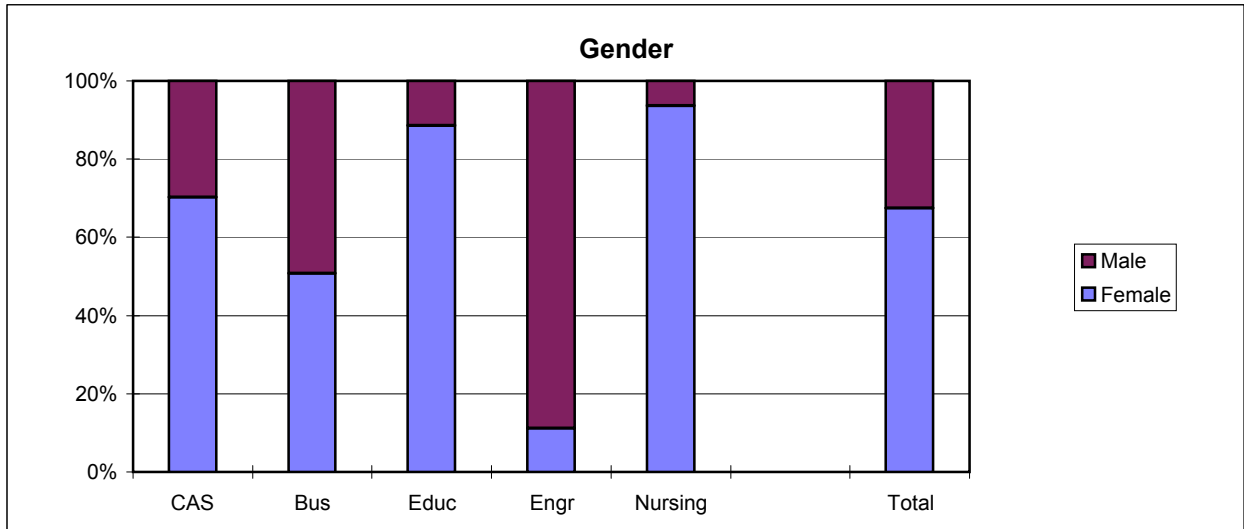
School Detail	All Graduates						
	CAS	Bus	Educ	Engr	Nursing	Total	
Total	857	408	443	193	160	2061	
Female	59.5%	47.3%	78.6%	7.3%	90.6%	58.7%	
Male	40.5%	52.7%	21.2%	93.3%	9.4%	41.3%	
Missing Data	0.0%	0.0%	0.0%	0.0%	0.0%	0.0%	
White, Non-Hispanic	85.2%	87.0%	88.9%	87.0%	82.5%	86.3%	
Black, Non-Hispanic	10.7%	9.1%	9.0%	3.1%	11.3%	9.4%	
Asian/Pacific Islander	2.0%	1.0%	0.5%	1.0%	1.9%	1.4%	
American Indian/Alaskan Native	0.2%	0.5%	0.2%	0.5%	0.0%	0.3%	
Hispanic	1.4%	1.2%	1.1%	2.1%	1.9%	1.4%	
Non-Resident Alien	0.5%	1.2%	0.2%	6.2%	2.5%	1.3%	
Missing Data	0.0%	0.0%	0.0%	0.0%	0.0%	0.0%	
Age at Graduation	range	20 to 64	21 to 61	21 to 54	21 to 47	21 to 52	20 to 64
	median	23.0	22.9	22.78	22.879	23.125	22.9
Bachelor of Science	64.6%	82.6%	93.0%	94.8%	100.0%	79.9%	
Bachelor of Music	1.9%	0.0%	0.0%	0.0%	0.0%	0.8%	
Bachelor of Arts	24.2%	0.0%	7.0%	5.2%	0.0%	12.0%	
Bachelor of Fine Arts	2.5%	0.0%	0.0%	0.0%	0.0%	1.0%	
Bachelor of Sci in Accountancy	0.0%	17.4%	0.0%	0.0%	0.0%	3.4%	
Bachelor of Liberal Studies	6.9%	0.0%	0.0%	0.0%	0.0%	2.9%	
Missing Data	0.0%	0.0%	0.0%	0.0%	0.0%	0.0%	
Graduated Spring 2006	47.7%	45.6%	67.7%	60.1%	49.4%	52.9%	
Graduated Summer 2006	20.7%	18.6%	10.8%	15.5%	2.5%	16.3%	
Graduated Fall 2006	31.6%	35.8%	21.4%	24.4%	48.1%	30.9%	
Missing Data	0.0%	0.0%	0.0%	0.0%	0.0%	0.0%	
Matriculated as a New Freshman	43.4%	50.2%	44.0%	56.0%	41.9%	45.9%	
Matriculated as a Transfer	56.2%	49.5%	55.8%	43.0%	56.9%	53.6%	
Matriculated as a Non-Degree Student	0.4%	0.2%	0.2%	1.0%	1.3%	0.4%	
Missing Data	0.0%	0.0%	0.0%	0.0%	0.0%	0.0%	
Time to Degree for New Freshmen							
3 Years or Fewer	1.1%	1.0%	1.0%	0.0%	1.5%	1.0%	
4 Years	37.4%	38.5%	42.6%	38.0%	29.9%	38.2%	
5 Years	36.6%	33.2%	37.4%	40.7%	41.8%	36.9%	
6 Years	9.4%	11.7%	9.7%	12.0%	10.4%	10.3%	
7 Years	4.8%	3.4%	3.6%	5.6%	4.5%	4.3%	
8 Years	3.5%	2.9%	1.5%	0.0%	0.0%	2.3%	
9 Years	1.1%	1.5%	0.5%	0.0%	1.5%	1.0%	
10 Years	1.1%	1.0%	0.0%	0.9%	1.5%	0.8%	
11 Years or More	5.1%	6.8%	3.6%	2.8%	9.0%	5.2%	
Missing Data	0.0%	0.0%	0.0%	0.0%	0.0%	0.0%	
Time to Degree for Transfers							
2 or Fewer Years	17.0%	23.3%	22.3%	9.6%	22.0%	19.2%	
3 Years	40.5%	37.6%	47.4%	38.6%	34.1%	40.8%	
4 Years	21.2%	21.3%	14.6%	28.9%	26.4%	20.7%	
5 Years	10.0%	5.9%	6.5%	12.0%	5.5%	8.2%	
6 Years	3.1%	5.9%	2.8%	3.6%	5.5%	3.8%	
7 Years	2.3%	1.0%	2.0%	2.4%	3.3%	2.1%	
8 Years	0.6%	2.0%	0.4%	1.2%	2.2%	1.0%	
9 Years	0.8%	0.5%	0.4%	1.2%	0.0%	0.6%	
10 Years or More	4.6%	2.5%	3.6%	2.4%	1.1%	3.5%	
Missing Data	0.0%	0.0%	0.0%	0.0%	0.0%	0.0%	
Graduating GPA (4 point scale)	Mean	3.134	2.978	3.392	2.916	3.336	3.154
	Std Dev	0.482	0.412	0.423	0.413	0.369	0.470

Southern Illinois University Edwardsville
Survey of 2006 Baccalaureate Graduates -- One Year Out

Comparison of All Graduates to Survey Respondents, con't.

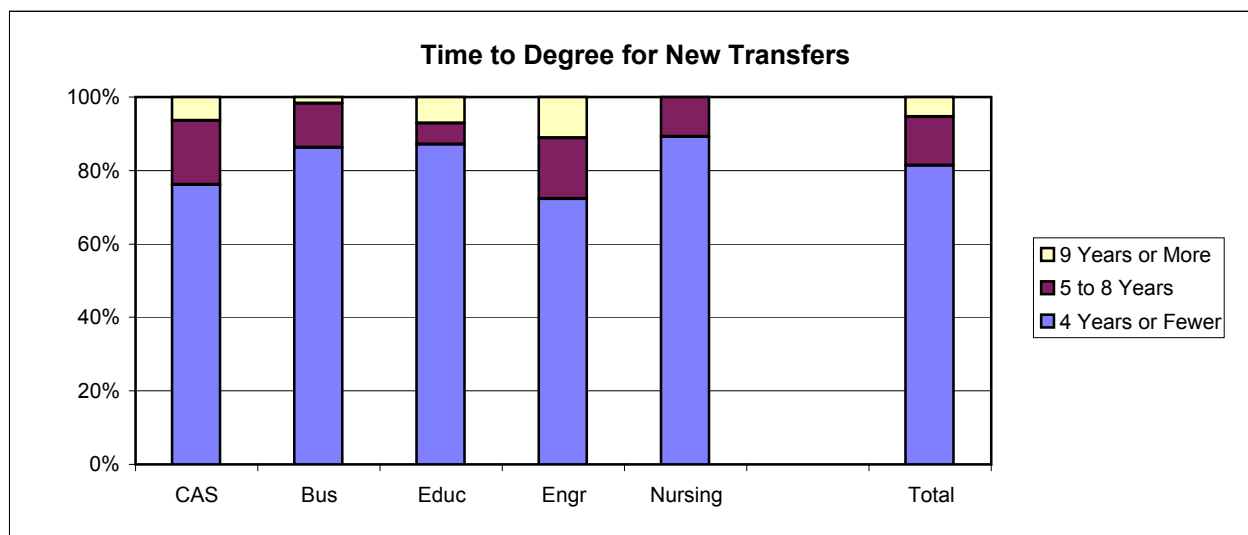
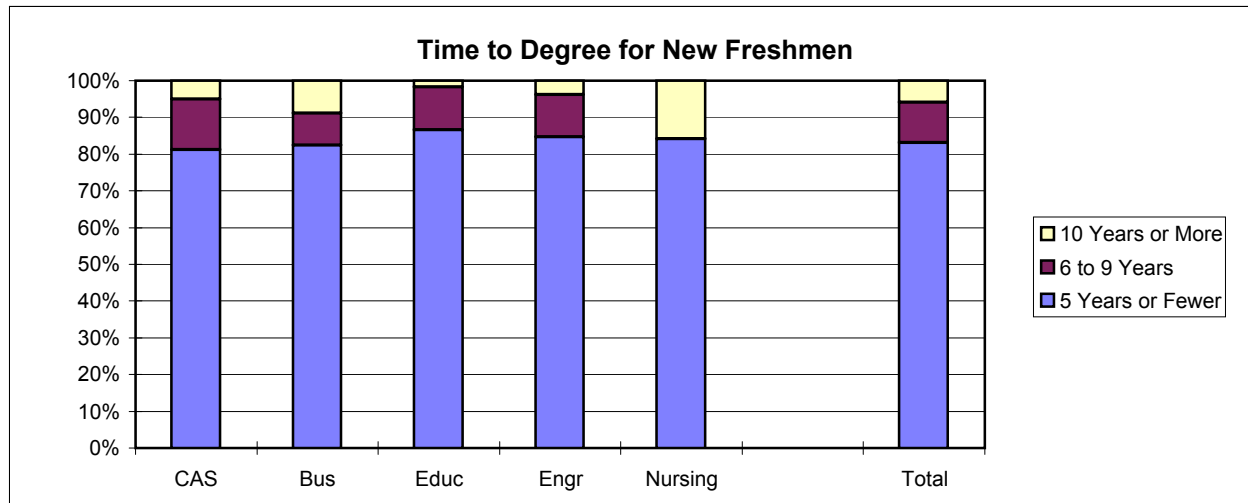
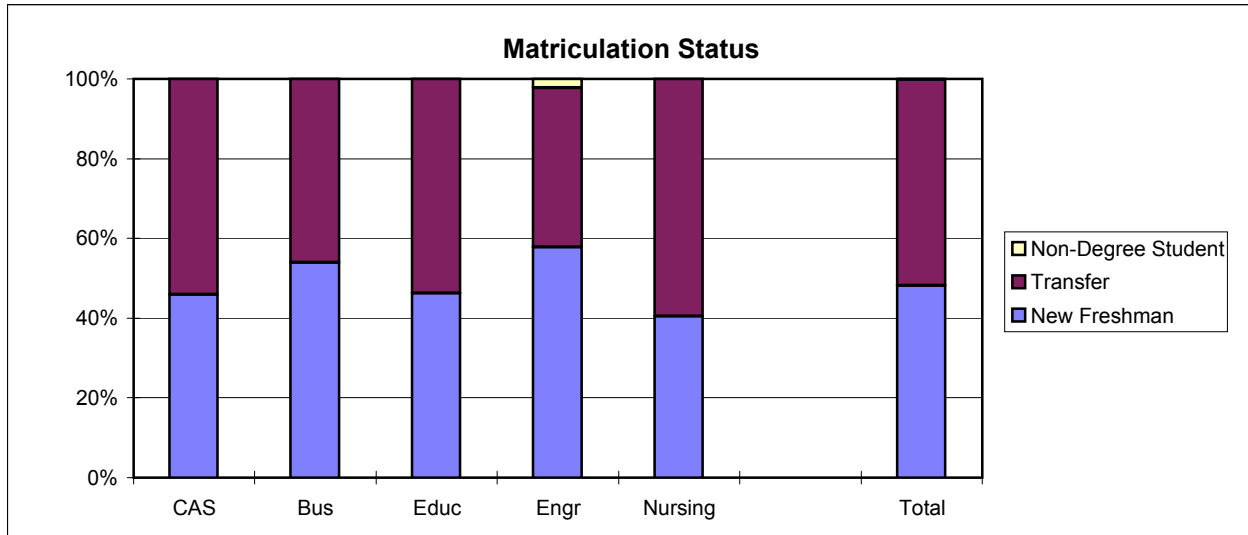
School Detail	All One Year Out Survey Respondents						
	CAS	Bus	Educ	Engr	Nursing	Total	
Total	255	126	130	45	47	603	
Female	70.2%	50.8%	88.5%	11.1%	93.6%	67.5%	
Male	29.8%	49.2%	11.5%	88.9%	6.4%	32.5%	
Missing Data	0.0%	0.0%	0.0%	0.0%	0.0%	0.0%	
White, Non-Hispanic	91.0%	92.1%	96.2%	93.3%	89.4%	92.4%	
Black, Non-Hispanic	7.5%	6.3%	3.8%	2.2%	4.3%	5.8%	
Asian/Pacific Islander	1.6%	1.6%	0.0%	0.0%	2.1%	1.2%	
American Indian/Alaskan Native	0.0%	0.0%	0.0%	0.0%	0.0%	0.0%	
Hispanic	0.0%	0.0%	0.0%	4.4%	2.1%	0.5%	
Non-Resident Alien	0.0%	0.0%	0.0%	0.0%	2.1%	0.2%	
Missing Data	0.0%	0.0%	0.0%	0.0%	0.0%	0.0%	
Age at Graduation	range	21 to 60	21 to 56	21 to 53	22 to 39	21 to 52	21 to 60
	median	22.78	22.8	22.65	22.7	22.77	22.73
Bachelor of Science		62.7%	82.5%	91.5%	91.1%	100.0%	78.1%
Bachelor of Music		1.6%	0.0%	0.0%	0.0%	0.0%	0.7%
Bachelor of Arts		23.9%	0.0%	8.5%	8.9%	0.0%	12.6%
Bachelor of Fine Arts		2.7%	0.0%	0.0%	0.0%	0.0%	1.2%
Bachelor of Sci in Accountancy		0.0%	17.5%	0.0%	0.0%	0.0%	3.6%
Bachelor of Liberal Studies		9.0%	0.0%	0.0%	0.0%	0.0%	3.8%
Missing Data		0.0%	0.0%	0.0%	0.0%	0.0%	0.0%
Graduated Spring 2006		51.4%	50.8%	68.5%	53.3%	55.3%	55.4%
Graduated Summer 2006		14.5%	14.3%	5.4%	11.1%	2.1%	11.3%
Graduated Fall 2006		34.1%	34.9%	26.2%	35.6%	42.6%	33.3%
Missing Data		0.0%	0.0%	0.0%	0.0%	0.0%	0.0%
Matriculated as a New Freshman		45.9%	54.0%	46.2%	57.8%	40.4%	48.1%
Matriculated as a Transfer		54.1%	46.0%	53.8%	40.0%	59.6%	51.7%
Matriculated as a Non-Degree Student		0.0%	0.0%	0.0%	2.2%	0.0%	0.2%
Missing Data		0.0%	0.0%	0.0%	0.0%	0.0%	0.0%
Time to Degree for New Freshmen							
3 Years or Fewer		1.7%	1.5%	0.0%	0.0%	0.0%	1.0%
4 Years		45.3%	54.4%	46.7%	19.2%	47.4%	45.5%
5 Years		34.2%	26.5%	40.0%	65.4%	36.8%	36.6%
6 Years		6.8%	7.4%	8.3%	7.7%	0.0%	6.9%
7 Years		4.3%	1.5%	1.7%	3.8%	0.0%	2.8%
8 Years		1.7%	0.0%	1.7%	0.0%	0.0%	1.0%
9 Years		0.9%	0.0%	0.0%	0.0%	0.0%	0.3%
10 Years		0.9%	0.0%	0.0%	0.0%	0.0%	0.3%
11 Years or More		4.3%	8.8%	1.7%	3.8%	15.8%	5.5%
Missing Data		0.0%	0.0%	0.0%	0.0%	0.0%	0.0%
Time to Degree for Transfers							
2 or Fewer Years		13.8%	31.0%	18.6%	11.1%	25.0%	18.9%
3 Years		37.0%	31.0%	54.3%	44.4%	42.9%	40.7%
4 Years		25.4%	24.1%	14.3%	16.7%	21.4%	21.8%
5 Years		11.6%	6.9%	2.9%	11.1%	7.1%	8.3%
6 Years		2.9%	5.2%	0.0%	5.6%	0.0%	2.6%
7 Years		2.9%	0.0%	2.9%	0.0%	3.6%	2.2%
8 Years		0.0%	0.0%	0.0%	0.0%	0.0%	0.0%
9 Years		0.7%	0.0%	1.4%	0.0%	0.0%	0.6%
10 Years or More		5.8%	1.7%	5.7%	11.1%	0.0%	4.8%
Missing Data		0.0%	0.0%	0.0%	0.0%	0.0%	0.0%
Graduating GPA (4 point scale)	Mean	3.225	3.094	3.478	3.013	3.376	3.248
	Std Dev	0.479	0.452	0.382	0.389	0.372	0.462

2006 Baccalaureate Recipients Profile



2006 Baccalaureate Recipients

Profile, con't.



Southern Illinois University Edwardsville
Survey of 2006 Baccalaureate Graduates -- One Year Out
Survey Responses -- Part I
Employment Questions

School Detail	CAS	Bus	Educ	Engr	Nursing	Total
Number of Survey Respondents *	255	126	130	45	47	603
1. Number Employed:						
Full-time	69.3%	87.3%	64.6%	95.6%	91.3%	75.7%
Part-time	14.2%	7.9%	16.9%	2.2%	6.5%	12.0%
Not, but Seeking	7.5%	4.0%	7.7%	2.2%	2.2%	6.0%
Not, not Seeking	9.1%	0.8%	10.8%	0.0%	0.0%	6.3%
Number Responding	254	126	130	45	46	601
The remaining questions in Part I were to be answered only by respondents who were employed full-time or part-time.						
	212	120	106	44	45	527
2. Place of Employment						
Illinois	62.4%	54.5%	72.0%	36.4%	60.5%	60.1%
Missouri	28.0%	40.9%	23.0%	52.3%	31.6%	32.4%
Other	9.5%	4.5%	5.0%	11.4%	7.9%	7.5%
Number Responding	189	110	100	44	38	481
3. Classification of Primary Employer						
Self-Employed or Private Practice	4.8%	5.1%	1.9%	0.0%	0.0%	3.5%
Business (Industrial, Commercial or Service)	46.9%	63.6%	14.3%	45.5%	4.4%	40.3%
Professional Firm (e.g., Engineering, Law)	3.8%	9.3%	0.0%	43.2%	0.0%	7.3%
College or University	4.8%	4.2%	8.6%	4.5%	0.0%	5.0%
Elementary/Secondary School	8.6%	0.8%	49.5%	0.0%	0.0%	13.6%
Health Agency (e.g. Hospital, Clinic)	5.7%	0.8%	3.8%	0.0%	93.3%	11.3%
Federal, State, or Local Government	8.6%	6.8%	2.9%	6.8%	0.0%	6.1%
Armed Services	0.5%	0.0%	0.0%	0.0%	2.2%	0.4%
NonProfit (Non-Government)	8.1%	5.1%	12.4%	0.0%	0.0%	6.9%
Other	8.1%	4.2%	6.7%	0.0%	0.0%	5.6%
Number Responding	209	118	105	44	45	521
4. Job Satisfaction						
Very Satisfied	25.5%	25.8%	32.1%	43.2%	24.4%	28.3%
Satisfied	30.7%	36.7%	45.3%	34.1%	55.6%	37.4%
Somewhat Satisfied	25.9%	20.8%	14.2%	13.6%	11.1%	20.1%
Somewhat Dissatisfied	12.3%	10.8%	4.7%	6.8%	6.7%	9.5%
Dissatisfied	2.8%	5.0%	1.9%	2.3%	2.2%	3.0%
Very Dissatisfied	2.8%	0.8%	1.9%	0.0%	0.0%	1.7%
Number Responding	212	120	106	44	45	527
5. Job in Field?						
Closely Related	34.0%	42.5%	59.4%	75.0%	86.0%	48.8%
Related	28.8%	39.2%	20.8%	20.5%	14.0%	27.6%
Unrelated (choice unknown)	4.2%	0.8%	1.9%	0.0%	0.0%	2.3%
Unrelated (by choice)	15.1%	5.8%	10.4%	2.3%	0.0%	9.7%
Unrelated (not by choice)	17.9%	11.7%	7.5%	2.3%	0.0%	11.6%
Number Responding	212	120	106	44	43	525
6. Timing of Securing First Job After Degree						
Held the Same Job While Enrolled	24.0%	28.3%	10.4%	20.5%	22.2%	21.8%
Secured Job by Graduation	16.3%	20.8%	20.8%	54.5%	55.6%	24.9%
Secured Job After Graduation(timing unknown)	0.5%	0.8%	0.9%	0.0%	0.0%	0.6%
Less than 1 Month After Graduation	8.2%	10.8%	12.3%	2.3%	6.7%	9.0%
1 to 3 Months After Graduation	15.9%	17.5%	26.4%	9.1%	6.7%	17.0%
3 to 6 Months After Graduation	22.6%	11.7%	15.1%	9.1%	8.9%	16.3%
6 to 9 Months After Graduation	7.2%	7.5%	10.4%	4.5%	0.0%	7.1%
More than 9 Months After Graduation	5.3%	2.5%	3.8%	0.0%	0.0%	3.4%
Number Responding	208	120	106	44	45	523

Southern Illinois University Edwardsville
Survey of 2006 Baccalaureate Graduates -- One Year Out
Survey Responses -- Part I
Employment Questions

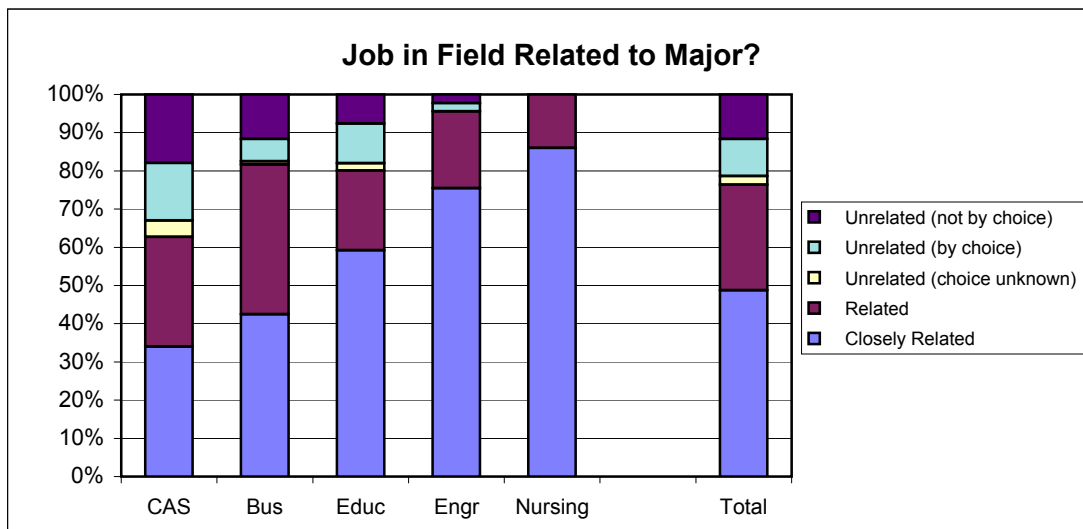
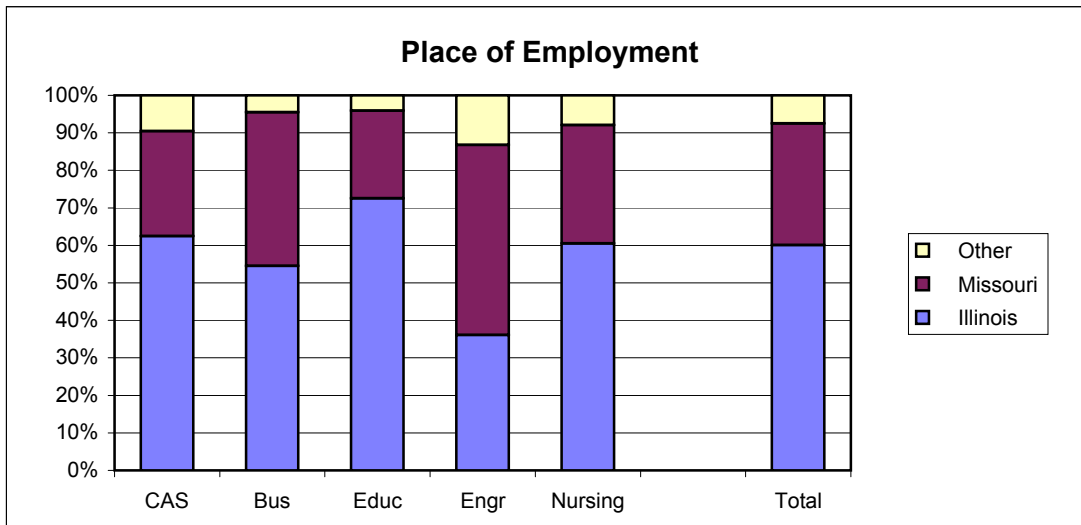
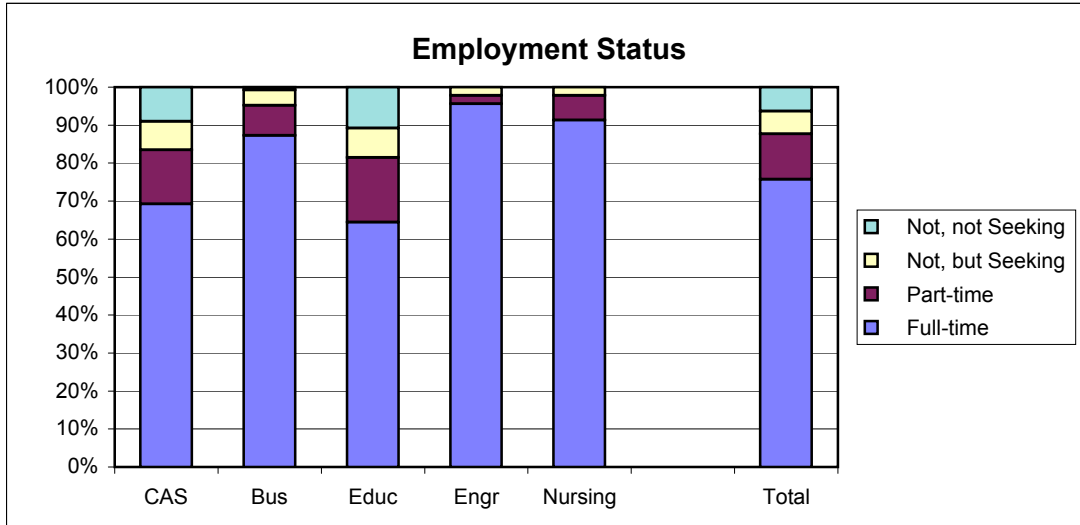
School Detail, con't.	CAS	Bus	Educ	Engr	Nursing	Total
7. Annual Earned Income in Current Job Before Taxes						
Employed Full-Time						
Less Than \$15,000	6.0%	2.8%	3.7%	0.0%	0.0%	3.7%
\$15,000 to 19,999	4.2%	0.0%	4.9%	4.8%	0.0%	3.0%
\$20,000 to \$24,999	16.9%	3.8%	14.8%	0.0%	2.7%	10.4%
\$25,000 to \$29,999	25.3%	17.0%	16.0%	2.4%	2.7%	17.4%
\$30,000 to \$34,999	19.9%	19.8%	42.0%	2.4%	16.2%	22.0%
\$35,000 to \$39,999	10.8%	21.7%	13.6%	4.8%	21.6%	14.4%
\$40,000 or More	16.9%	34.9%	4.9%	85.7%	56.8%	29.2%
Number Responding	166	106	81	42	37	432
Mean Salary	\$30,929	\$37,325	\$29,259	\$45,516	\$42,723	\$34,614
Employed Part-Time						
Less Than \$5,000	4.2%	0.0%	6.3%	DW	0.0%	3.8%
5,000 to \$9,999	20.8%	12.5%	12.5%	DW	0.0%	15.4%
\$10,000 to \$14,999	45.8%	25.0%	50.0%	DW	0.0%	40.4%
\$15,000 to \$19,999	16.7%	37.5%	6.3%	DW	0.0%	17.3%
\$20,000 or More	12.5%	25.0%	25.0%	DW	100.0%	23.1%
Number Responding	24	8	16	1	3	52
Mean Salary	\$13,058	\$15,989	\$13,288	\$15,000	\$28,000	\$11,677
8. Bachelor's Degree Preparation for Job						
Very Well	13.3%	9.3%	25.7%	22.7%	31.8%	17.3%
Well	30.0%	39.8%	41.9%	31.8%	40.9%	35.8%
Adequately	33.5%	41.5%	28.6%	43.2%	27.3%	34.6%
Inadequately	13.8%	5.9%	2.9%	0.0%	0.0%	7.4%
Poorly	3.0%	1.7%	0.0%	2.3%	0.0%	1.8%
Very Poorly	6.4%	1.7%	1.0%	0.0%	0.0%	3.1%
Number Responding	203	118	105	44	44	514
9a. Primary Occupation						
Management	8.0%	19.0%	2.9%	14.0%	0.0%	9.3%
Business Operations	5.5%	14.7%	2.9%	0.0%	0.0%	6.1%
Financial Specialists	3.5%	16.4%	0.0%	0.0%	0.0%	5.1%
Computer Specialists	1.5%	10.3%	1.9%	9.3%	0.0%	4.1%
Mathematical Scientists and Technicians	0.0%	0.0%	0.0%	2.3%	0.0%	0.2%
Architects, Surveyors, and Cartographers	0.5%	0.0%	0.0%	2.3%	0.0%	0.4%
Engineers and Related Technicians	0.5%	0.9%	0.0%	65.1%	0.0%	5.9%
Life & Physical Scientists, and Technicians	5.5%	0.0%	1.0%	0.0%	0.0%	2.4%
Social Scientists	2.5%	0.9%	2.9%	0.0%	0.0%	1.8%
Health: Doctors	0.5%	0.0%	0.0%	0.0%	0.0%	0.2%
Health: Registered Nurses	0.5%	0.0%	0.0%	0.0%	97.8%	8.9%
Health: Theratpists	0.0%	0.0%	1.0%	0.0%	0.0%	0.2%
Health: Oth Practitnrs, Prof.s, & Suppt Wkrs	4.0%	0.9%	11.7%	0.0%	2.2%	4.3%
Community & Social Service	10.0%	0.9%	10.7%	0.0%	0.0%	6.3%
Legal: Attorneys/Judges	0.0%	0.0%	0.0%	0.0%	0.0%	0.0%
Legal: Legal Support Workers	1.5%	0.9%	1.0%	0.0%	0.0%	1.0%
Education: Early Childhood Teachers	1.0%	0.0%	10.7%	0.0%	0.0%	2.6%
Education: Elementary School Teachers	1.0%	0.0%	16.5%	0.0%	0.0%	3.7%
Education: Middle School Teachers	2.0%	0.0%	7.8%	0.0%	0.0%	2.4%
Education: Secondary School Teachers	4.0%	0.0%	1.9%	0.0%	0.0%	2.0%
Education: Special Education Teachers	0.5%	0.0%	9.7%	0.0%	0.0%	2.2%
Education: Other, except Administrators	1.5%	0.9%	7.8%	2.3%	0.0%	2.6%
continued						

Southern Illinois University Edwardsville
Survey of 2006 Baccalaureate Graduates -- One Year Out
Survey Responses -- Part I
Employment Questions

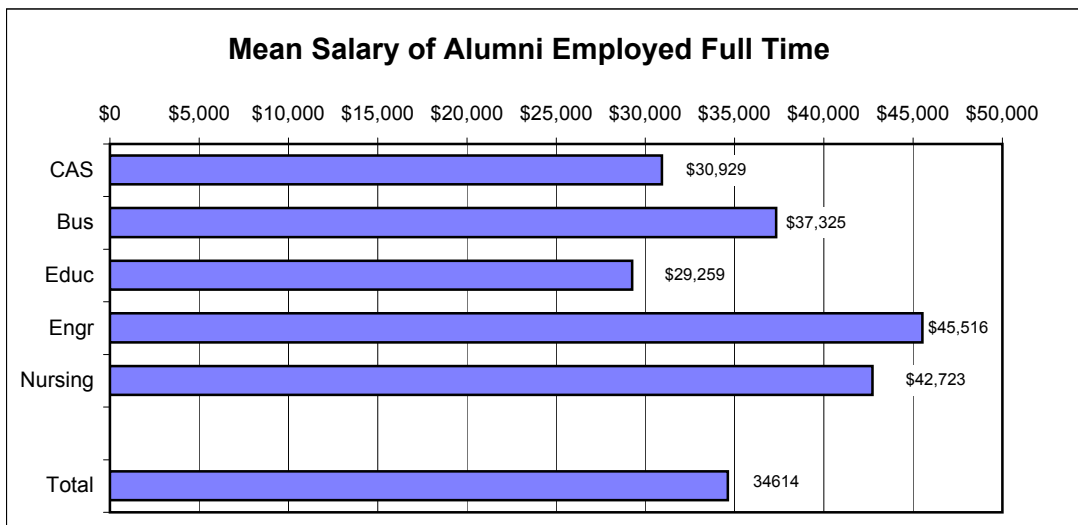
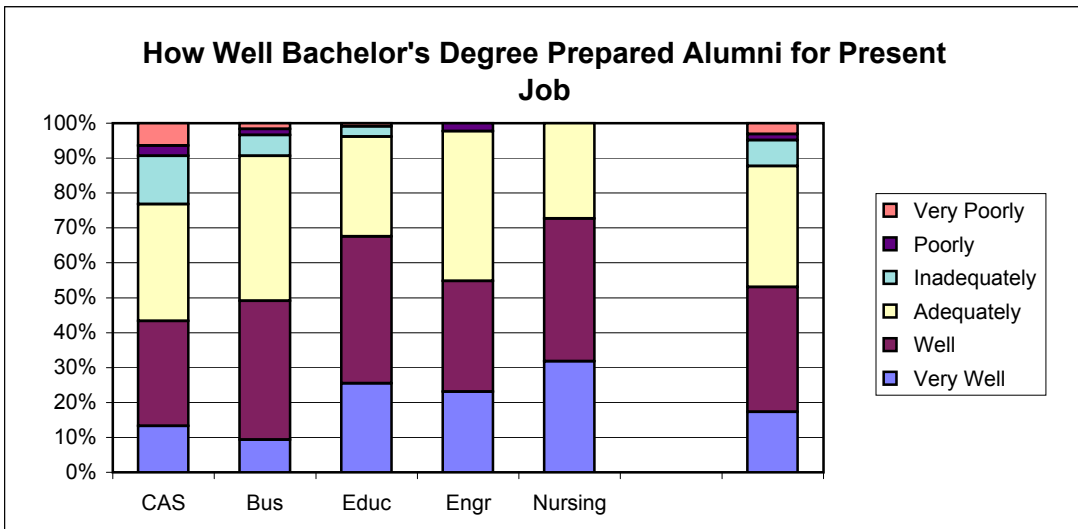
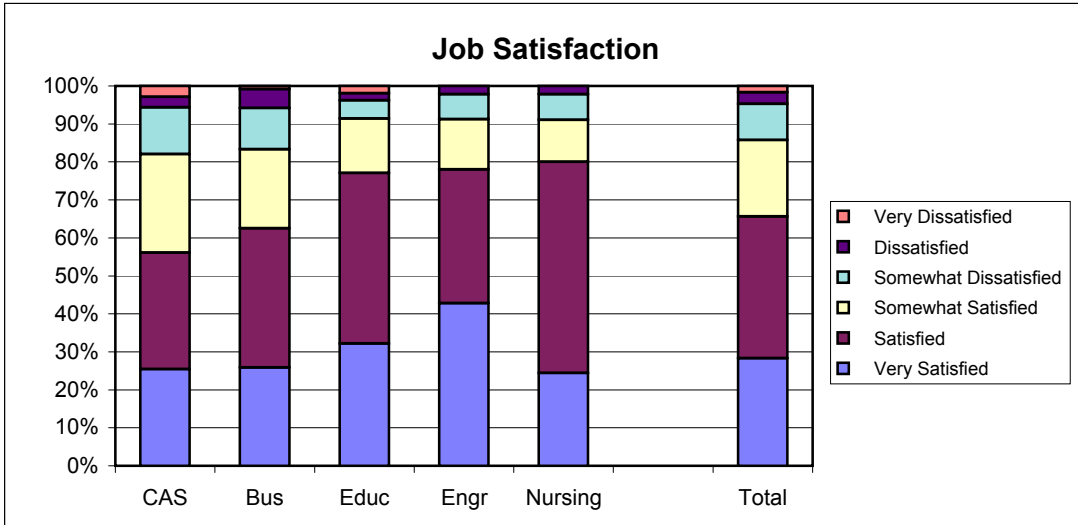
School Detail, con't.	CAS	Bus	Educ	Engr	Nursing	Total
9a. continuation of Primary Occupation						
Library Occupations	0.5%	0.0%	0.0%	0.0%	0.0%	0.2%
Art and Design Workers	2.5%	0.9%	0.0%	0.0%	0.0%	1.2%
Entertainment, Performers, Sports & Related	1.5%	1.7%	1.9%	0.0%	0.0%	1.4%
Media and Communication Workers	8.0%	0.0%	0.0%	0.0%	0.0%	3.2%
Sales	7.0%	16.4%	5.8%	2.3%	0.0%	7.9%
Office & Administration	9.0%	8.6%	0.0%	0.0%	0.0%	5.5%
Protective Services	4.5%	0.0%	0.0%	0.0%	0.0%	1.8%
Food Preparation & Serving	4.5%	2.6%	1.9%	0.0%	0.0%	2.8%
Buildings & Grounds Maintenance	0.5%	0.0%	0.0%	0.0%	0.0%	0.2%
Personal Care and Service	1.5%	0.9%	0.0%	0.0%	0.0%	0.8%
Farming, Fishing, and Forestry	1.0%	0.0%	0.0%	0.0%	0.0%	0.4%
Construction & Extractive	1.5%	1.7%	0.0%	2.3%	0.0%	1.2%
Installation, Maintenance, & Repair	0.0%	0.0%	0.0%	0.0%	0.0%	0.0%
Production	2.0%	0.9%	0.0%	0.0%	0.0%	1.0%
Transportation and Material Moving	1.0%	0.9%	0.0%	0.0%	0.0%	0.6%
Military	1.0%	0.0%	0.0%	0.0%	0.0%	0.4%
Number Responding	200	116	103	43	45	507
9b. Industry						
Agriculture, Forestry, and Fishing	4.8%	3.0%	0.0%	0.0%	0.0%	2.6%
Mining	0.0%	0.0%	0.0%	0.0%	0.0%	0.0%
Utilities	0.6%	3.0%	0.0%	10.8%	0.0%	1.9%
Construction	3.6%	7.0%	1.3%	29.7%	0.0%	6.0%
Manufacturing	3.6%	13.0%	1.3%	13.5%	0.0%	6.0%
Wholesale Trade	0.6%	0.0%	0.0%	0.0%	0.0%	0.2%
Retail Trade	7.3%	6.0%	2.5%	0.0%	0.0%	4.8%
Transportation	1.8%	5.0%	0.0%	13.5%	0.0%	3.1%
Information	2.4%	1.0%	1.3%	2.7%	0.0%	1.7%
Finance & Insurance	7.3%	19.0%	0.0%	2.7%	0.0%	7.6%
Real Estate & Rental & Leasing	0.6%	4.0%	0.0%	0.0%	0.0%	1.2%
Professional, Scientific & Technical Services	11.5%	7.0%	2.5%	18.9%	2.6%	8.6%
Management of Companies & Enterprises	0.0%	5.0%	1.3%	0.0%	0.0%	1.4%
Admin & Suppt, Waste Mgmt & Remedtn Svcs	0.6%	2.0%	1.3%	0.0%	0.0%	1.0%
Educational Services	13.3%	3.0%	60.0%	5.4%	0.0%	17.9%
Health Care & Social Assistance	13.9%	8.0%	16.3%	0.0%	97.4%	19.3%
Arts, Entertainment & Recreation	7.3%	3.0%	2.5%	0.0%	0.0%	4.0%
Accommodations & Food Services	3.6%	1.0%	0.0%	2.7%	0.0%	1.9%
Other Services (except Public Admin)	11.5%	6.0%	8.8%	0.0%	0.0%	7.6%
Public Administration	5.5%	4.0%	1.3%	0.0%	0.0%	3.3%
Number Responding	165	100	80	37	38	420

3/14/2008

2006 Baccalaureate Graduates One Year Out Employment



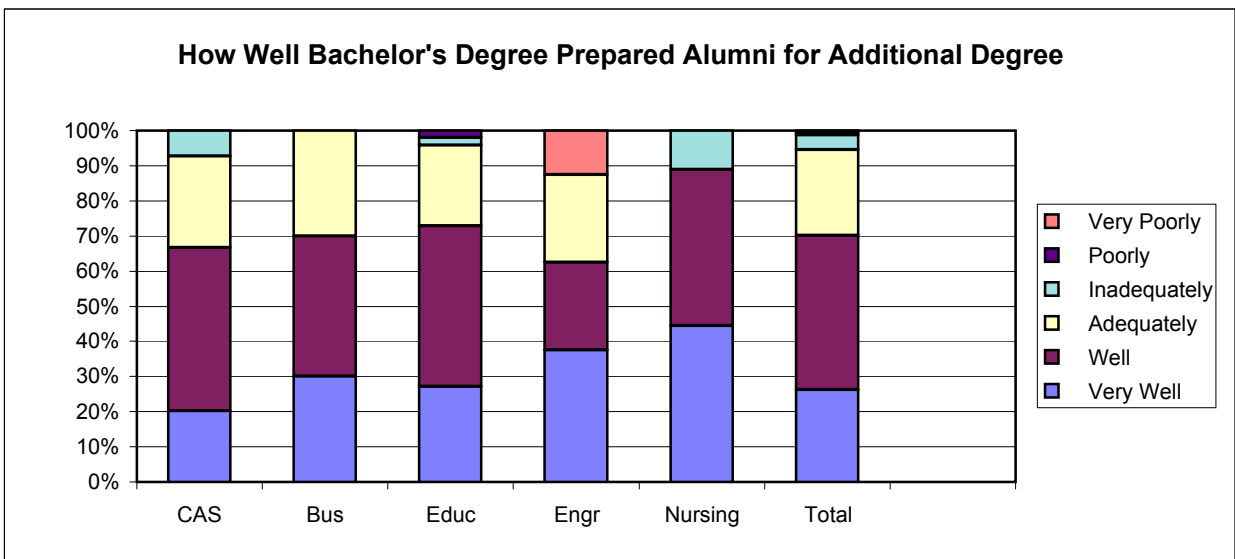
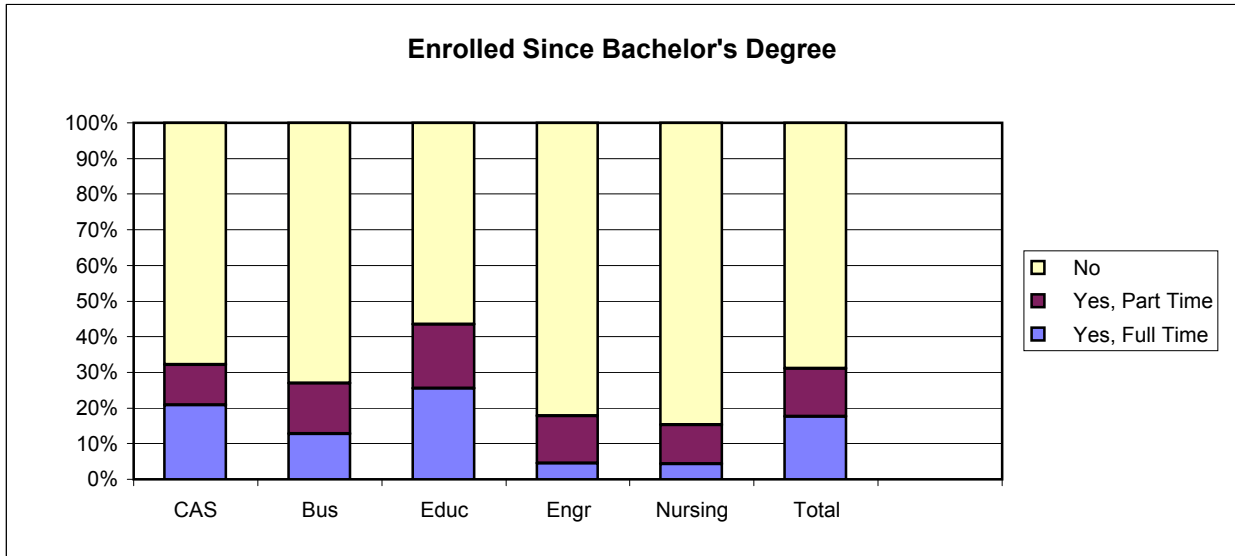
2006 Baccalaureate Graduates One Year Out *Employment, con't.*



Southern Illinois University Edwardsville
Survey of 2006 Baccalaureate Graduates -- One Year Out
Survey Responses -- Part II
Education Questions

School Detail	CAS	Bus	Educ	Engr	Nursing	Total
Number of Survey Respondents	255	126	130	45	47	603
10. Enrolled in College or University Since Degree?						
Yes, Full Time	20.8%	12.7%	25.6%	4.4%	4.3%	17.6%
Yes, Part Time	11.4%	14.3%	17.8%	13.3%	10.9%	13.5%
No	67.8%	73.0%	56.6%	82.2%	84.8%	68.9%
Number Responding	255	126	129	45	46	601
11. Pursuing or Have Completed an Additional Degree?						
Yes	57.1%	43.1%	61.7%	38.1%	50.0%	53.4%
No	42.9%	56.9%	38.3%	61.9%	50.0%	46.6%
Number Responding	126	72	81	21	20	320
The remaining questions in Part II were to be answered only by respondents who were pursuing or had completed another degree.						
	72	31	50	8	10	171
11b. Pursuing or Completed Which Degree?						
Associate's	2.8%	0.0%	0.0%	12.5%	0.0%	1.8%
Second Bachelor's	7.0%	9.7%	4.1%	0.0%	0.0%	5.9%
Academic Master's (MA, MS, MEd, etc)	36.6%	19.4%	61.2%	62.5%	60.0%	43.2%
Prof. Master's or Ed Specialist	18.3%	61.3%	22.4%	0.0%	20.0%	26.6%
Medicine (MD, OD)	7.0%	0.0%	0.0%	0.0%	0.0%	3.0%
Health Prof. (dentistry, pharmacy, etc.)	14.1%	0.0%	6.1%	0.0%	20.0%	8.9%
Theology/Divinity	0.0%	0.0%	0.0%	0.0%	0.0%	0.0%
Law (LLB, JD)	7.0%	3.2%	0.0%	0.0%	0.0%	3.6%
Doctorate (PhD, EdD, DA, DBA, etc.)	1.4%	0.0%	4.1%	12.5%	0.0%	2.4%
Other	5.6%	6.5%	2.0%	12.5%	0.0%	4.7%
Number Responding	71	31	49	8	10	169
12. How Well Bach. Degree Prepared You for Additional Degree						
Very Well	20.3%	30.0%	27.1%	37.5%	44.4%	26.2%
Well	46.4%	40.0%	45.8%	25.0%	44.4%	43.9%
Adequately	26.1%	30.0%	22.9%	25.0%	0.0%	24.4%
Inadequately	7.2%	0.0%	2.1%	0.0%	11.1%	4.3%
Poorly	0.0%	0.0%	2.1%	0.0%	0.0%	0.6%
Very Poorly	0.0%	0.0%	0.0%	12.5%	0.0%	0.6%
Number Responding	69	30	48	8	9	164

2006 Baccalaureate Graduates One Year Out Additional Education

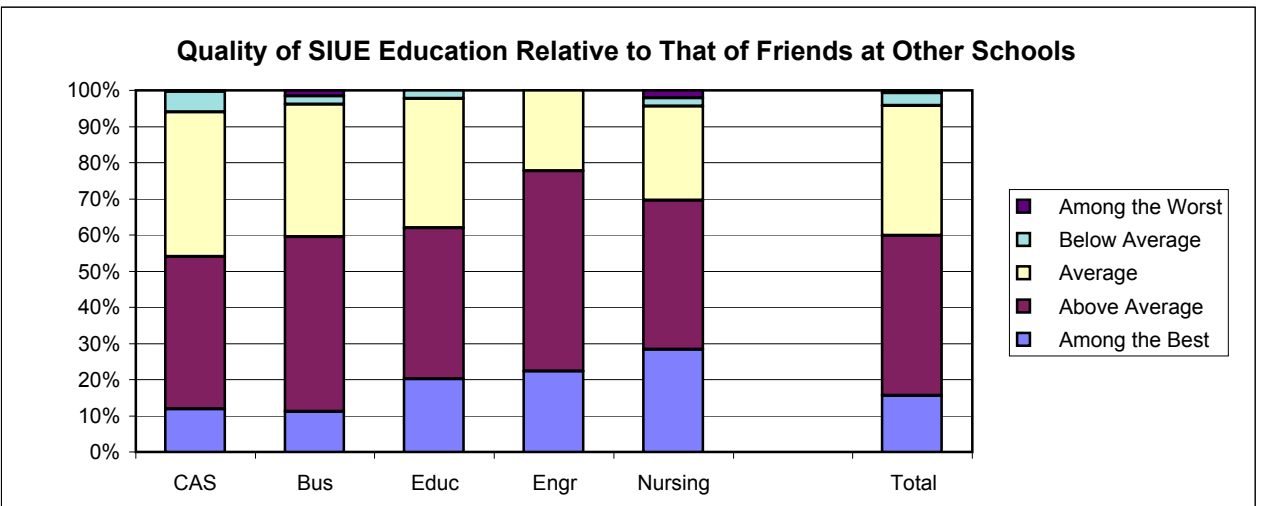
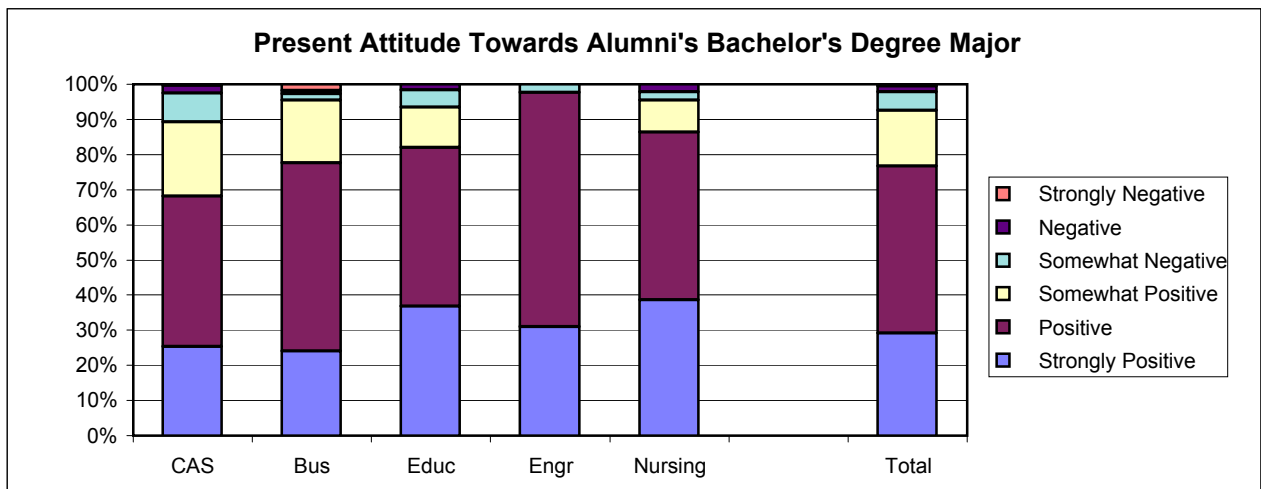
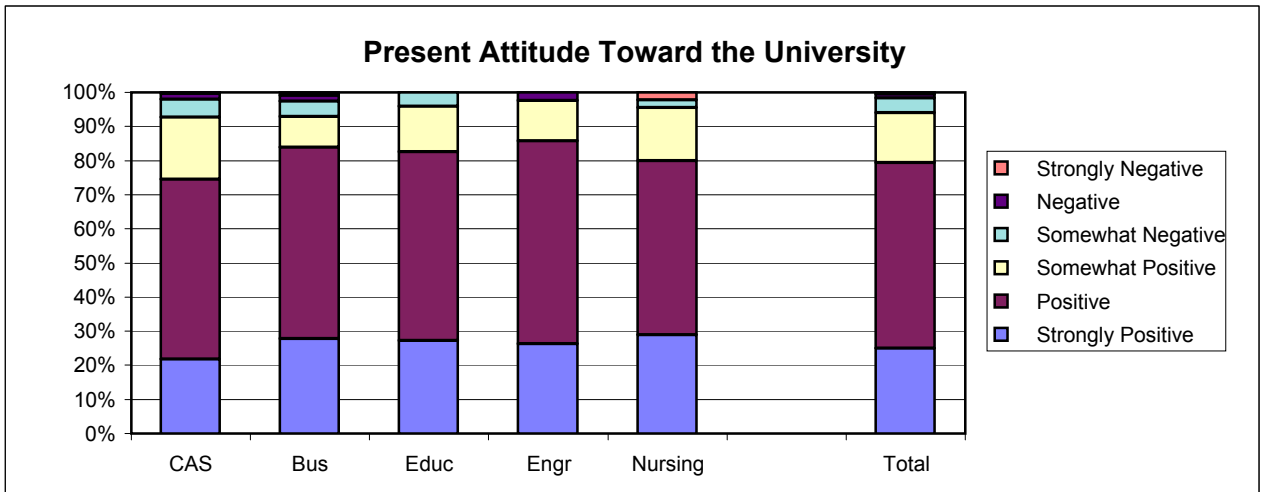


Southern Illinois University Edwardsville
Survey of 2006 Baccalaureate Graduates -- One Year Out
Survey Responses -- Part III
Satisfaction Questions

School Detail	CAS	Bus	Educ	Engr	Nursing	Total
Number of Survey Respondents	255	126	130	45	47	603
13. Present Attitude Towards the University						
Strongly Positive	21.8%	27.7%	27.3%	26.2%	28.9%	25.0%
Positive	52.7%	56.3%	55.4%	59.5%	51.1%	54.4%
Somewhat Positive	18.1%	8.9%	13.2%	11.9%	15.6%	14.6%
Somewhat Negative	5.3%	4.5%	4.1%	0.0%	2.2%	4.3%
Negative	1.6%	1.8%	0.0%	2.4%	0.0%	1.2%
Strongly Negative	0.4%	0.9%	0.0%	0.0%	2.2%	0.5%
Number Responding	243	112	121	42	45	563
14. Present Attitude Towards your Bachelor's Degree Major						
Strongly Positive	25.3%	24.1%	36.9%	31.0%	38.6%	29.1%
Positive	42.7%	53.6%	45.1%	66.7%	47.7%	47.6%
Somewhat Positive	21.2%	17.9%	11.5%	0.0%	9.1%	15.9%
Somewhat Negative	8.3%	1.8%	4.9%	2.4%	2.3%	5.3%
Negative	2.1%	0.9%	1.6%	0.0%	2.3%	1.6%
Strongly Negative	0.4%	1.8%	0.0%	0.0%	0.0%	0.5%
Number Responding	241	112	122	42	44	561

3/17/2008

2006 Baccalaureate Graduates One Year Out Satisfaction



Southern Illinois University Edwardsville
Survey of 2006 Baccalaureate Graduates -- One Year Out
Survey Responses -- Part IV
Educational Practices Questions

School Detail	CAS	Bus	Educ	Engr	Nursing	Total
Number of Survey Respondents	255	126	130	45	47	603
15. Faculty in Major Were Accessible Outside of Class						
Very Often	37.6%	28.8%	46.2%	35.6%	45.7%	38.1%
Often	49.4%	56.0%	46.2%	51.1%	45.7%	49.9%
Sometimes	9.4%	14.4%	6.2%	13.3%	6.5%	9.8%
Infrequently	3.5%	0.8%	1.5%	0.0%	2.2%	2.2%
Never	0.0%	0.0%	0.0%	0.0%	0.0%	0.0%
Number Responding	255	125	130	45	46	601
16. In Major, Student was Expected to Work Cooperatively with Other Students						
Very Often	34.1%	65.9%	63.1%	37.8%	69.6%	50.0%
Often	40.8%	31.0%	28.5%	46.7%	28.3%	35.5%
Sometimes	21.6%	3.2%	8.5%	15.6%	2.2%	13.0%
Infrequently	3.1%	0.0%	0.0%	0.0%	0.0%	1.3%
Never	0.4%	0.0%	0.0%	0.0%	0.0%	0.2%
Number Responding	255	126	130	45	46	602
17. In Major, Faculty Encouraged Student to Challenge Ideas (student's, other students, and in readings & materials)						
Very Often	34.1%	16.7%	40.8%	22.2%	41.3%	31.6%
Often	38.8%	40.5%	37.7%	33.3%	41.3%	38.7%
Sometimes	19.6%	34.9%	18.5%	26.7%	13.0%	22.6%
Infrequently	6.3%	5.6%	2.3%	17.8%	4.3%	6.0%
Never	1.2%	2.4%	0.8%	0.0%	0.0%	1.2%
Number Responding	255	126	130	45	46	602
18. In Major, Faculty Used Appropriate Teaching Activities to Help Student Learn						
Very Often	36.5%	19.0%	44.2%	22.2%	21.7%	32.3%
Often	43.5%	54.8%	40.3%	53.3%	56.5%	46.9%
Sometimes	15.3%	21.4%	13.2%	24.4%	19.6%	17.1%
Infrequently	4.7%	4.8%	2.3%	0.0%	2.2%	3.7%
Never	0.0%	0.0%	0.0%	0.0%	0.0%	0.0%
Number Responding	255	126	129	45	46	601
19. In Major, Faculty had High Expectations for Quality Of Student Work						
Very Often	37.6%	19.8%	51.9%	26.7%	43.5%	36.6%
Often	45.9%	58.7%	28.7%	60.0%	50.0%	46.3%
Sometimes	11.8%	18.3%	17.1%	8.9%	4.3%	13.5%
Infrequently	3.9%	3.2%	2.3%	2.2%	0.0%	3.0%
Never	0.8%	0.0%	0.0%	2.2%	2.2%	0.7%
Number Responding	255	126	129	45	46	601
20. In Major, Faculty Provided Timely Feedback						
Very Often	31.1%	20.6%	42.3%	22.2%	23.9%	30.1%
Often	49.2%	50.8%	46.2%	57.8%	58.7%	50.2%
Sometimes	15.7%	25.4%	10.8%	15.6%	15.2%	16.6%
Infrequently	3.5%	3.2%	0.0%	4.4%	0.0%	2.5%
Never	0.4%	0.0%	0.8%	0.0%	2.2%	0.5%
Number Responding	254	126	130	45	46	601

Southern Illinois University Edwardsville
Survey of 2006 Baccalaureate Graduates -- One Year Out
Survey Responses -- Part IV
Educational Practices Questions

School Detail, cont'd	CAS	Bus	Educ	Engr	Nursing	Total
21. In Major, Faculty Encouraged Students' Questions and Discussion in Class						
Very Often	50.6%	29.4%	59.2%	52.3%	52.2%	48.3%
Often	36.1%	51.6%	33.8%	38.6%	39.1%	39.3%
Sometimes	11.4%	14.3%	5.4%	6.8%	8.7%	10.1%
Infrequently	1.6%	4.8%	0.8%	0.0%	0.0%	1.8%
Never	0.4%	0.0%	0.8%	2.3%	0.0%	0.5%
Number Responding	255	126	130	44	46	601
22. In Major, Student Spent Necessary Time and Energy to Come to Class Prepared						
Very Often	47.8%	36.8%	62.3%	35.6%	45.7%	47.6%
Often	41.6%	44.8%	30.8%	48.9%	43.5%	40.6%
Sometimes	9.0%	17.6%	6.2%	13.3%	10.9%	10.6%
Infrequently	1.6%	0.8%	0.8%	2.2%	0.0%	1.2%
Never	0.0%	0.0%	0.0%	0.0%	0.0%	0.0%
Number Responding	255	125	130	45	46	601

3/18/2008

Southern Illinois University Edwardsville
Survey of 2006 Baccalaureate Graduates -- One Year Out
Survey Responses -- Part V
Program Quality Questions

School Detail	CAS	Bus	Educ	Engr	Nursing	Total
Number of Survey Respondents	255	126	130	45	47	603
23A. Quality of Major in Offering						
Sufficient Courses						
Excellent	29.5%	32.5%	46.9%	13.3%	39.1%	33.4%
Good	46.1%	55.6%	45.4%	53.3%	45.7%	48.4%
Fair	18.9%	9.5%	7.7%	24.4%	10.9%	14.3%
Poor	5.5%	2.4%	0.0%	8.9%	4.3%	3.8%
Number Responding	254	126	130	45	46	601
23B. Quality of Major in Offering						
Convenient Class Times						
Excellent	19.7%	21.6%	30.0%	17.8%	28.3%	22.8%
Good	49.6%	52.8%	50.0%	46.7%	52.2%	50.3%
Fair	26.8%	23.2%	15.4%	35.6%	19.6%	23.7%
Poor	3.9%	2.4%	4.6%	0.0%	0.0%	3.2%
Number Responding	254	125	130	45	46	600
23C. Quality of Major in Offering						
Logical Class Sequences						
Excellent	23.2%	24.6%	36.2%	20.5%	34.8%	27.0%
Good	55.9%	57.1%	53.1%	54.5%	56.5%	55.5%
Fair	17.7%	16.7%	10.8%	22.7%	6.5%	15.5%
Poor	3.1%	1.6%	0.0%	2.3%	2.2%	2.0%
Number Responding	254	126	130	44	46	600
24 Quality of Faculty in Major						
Excellent	45.5%	31.7%	57.0%	38.6%	43.5%	44.4%
Good	45.5%	56.9%	37.5%	61.4%	47.8%	47.5%
Fair	6.7%	8.1%	4.7%	0.0%	6.5%	6.1%
Poor	2.4%	3.3%	0.8%	0.0%	2.2%	2.0%
Number Responding	253	123	128	44	46	594
25 Grading Standards in Major Were:						
Too High	3.6%	3.2%	0.8%	4.4%	2.2%	2.9%
About Right	89.3%	92.8%	93.8%	93.3%	95.6%	91.8%
Too Low	7.1%	4.0%	5.5%	2.2%	2.2%	5.4%
Number Responding	252	125	128	45	45	595

3/18/2008

Southern Illinois University Edwardsville
Survey of 2006 Baccalaureate Graduates -- One Year Out
Survey Responses -- Part VI
Educational Effectiveness Questions

School Detail	CAS	Bus	Educ	Engr	Nursing	Total
Number of Survey Respondents	255	126	130	45	47	603
26. Helpfulness of University Experiences in:						
A. Developing Critical Thinking Ability						
Extremely Helpful	20.4%	7.9%	22.5%	20.5%	15.2%	17.8%
Very Helpful	43.1%	53.2%	48.1%	38.6%	63.0%	47.5%
Moderately Helpful	31.0%	34.1%	22.5%	34.1%	17.4%	29.0%
Slightly Helpful	4.3%	4.0%	5.4%	6.8%	2.2%	4.5%
Not Helpful	1.2%	0.8%	1.6%	0.0%	2.2%	1.2%
Number Responding	255	126	129	44	46	600
B. Developing Sense of Ethics						
Extremely Helpful	18.0%	12.7%	21.9%	18.2%	19.6%	17.9%
Very Helpful	30.2%	46.0%	38.3%	29.5%	43.5%	36.2%
Moderately Helpful	34.1%	30.2%	25.8%	38.6%	30.4%	31.6%
Slightly Helpful	12.2%	7.9%	9.4%	13.6%	4.3%	10.2%
Not Helpful	5.5%	3.2%	4.7%	0.0%	2.2%	4.2%
Number Responding	255	126	128	44	46	599
C. Understanding People with Different Backgrounds, Habits, Values, Appearances and Abilities						
Extremely Helpful	29.8%	14.3%	26.6%	13.6%	23.9%	24.2%
Very Helpful	35.3%	49.2%	47.7%	15.9%	50.0%	40.6%
Moderately Helpful	22.7%	30.2%	19.5%	40.9%	19.6%	24.7%
Slightly Helpful	9.0%	3.2%	5.5%	18.2%	4.3%	7.3%
Not Helpful	3.1%	3.2%	0.8%	11.4%	2.2%	3.2%
Number Responding	255	126	128	44	46	599
D. Becoming a More Active Citizen						
Extremely Helpful	11.0%	6.3%	14.1%	6.8%	8.7%	10.2%
Very Helpful	22.7%	17.5%	27.3%	13.6%	37.0%	23.0%
Moderately Helpful	38.4%	36.5%	29.7%	38.6%	32.6%	35.7%
Slightly Helpful	18.4%	27.8%	22.7%	15.9%	17.4%	21.0%
Not Helpful	9.4%	11.9%	6.3%	25.0%	4.3%	10.0%
Number Responding	255	126	128	44	46	599
E. Improving Quality of Life (aside from financial benefits)						
Extremely Helpful	14.1%	8.7%	18.9%	6.8%	8.7%	13.0%
Very Helpful	32.5%	38.1%	40.2%	38.6%	39.1%	36.3%
Moderately Helpful	31.4%	31.7%	26.8%	29.5%	37.0%	30.8%
Slightly Helpful	14.5%	18.3%	10.2%	15.9%	13.0%	14.4%
Not Helpful	7.5%	3.2%	3.9%	9.1%	2.2%	5.5%
Number Responding	255	126	127	44	46	598
F. Developing Reasoning Skills						
Extremely Helpful	18.0%	9.5%	21.3%	25.0%	13.0%	17.1%
Very Helpful	45.1%	48.4%	45.7%	45.5%	58.7%	47.0%
Moderately Helpful	27.1%	33.3%	22.8%	20.5%	21.7%	26.6%
Slightly Helpful	7.8%	8.7%	7.9%	6.8%	4.3%	7.7%
Not Helpful	2.0%	0.0%	2.4%	2.3%	2.2%	1.7%
Number Responding	255	126	127	44	46	598

Southern Illinois University Edwardsville
Survey of 2006 Baccalaureate Graduates -- One Year Out
Survey Responses -- Part VI
Educational Effectiveness Questions

School Detail, con't.	CAS	Bus	Educ	Engr	Nursing	Total
G. Viewing Problems from Different Perspectives						
Extremely Helpful	27.6%	14.4%	30.5%	36.4%	17.4%	25.3%
Very Helpful	38.6%	47.2%	39.1%	40.9%	56.5%	42.0%
Moderately Helpful	25.6%	32.8%	20.3%	18.2%	17.4%	24.8%
Slightly Helpful	6.7%	4.0%	8.6%	0.0%	6.5%	6.0%
Not Helpful	1.6%	1.6%	1.6%	4.5%	2.2%	1.8%
Number Responding	254	125	128	44	46	597
H. Developing Ability to Solve Problems						
Extremely Helpful	23.5%	10.3%	23.6%	50.0%	17.4%	22.2%
Very Helpful	42.4%	57.9%	41.7%	36.4%	52.2%	45.8%
Moderately Helpful	25.1%	27.0%	26.0%	11.4%	23.9%	24.6%
Slightly Helpful	6.7%	4.0%	5.5%	2.3%	4.3%	5.4%
Not Helpful	2.4%	0.8%	3.1%	0.0%	2.2%	2.0%
Number Responding	255	126	127	44	46	598
I. Making Informed Decisions as a Citizen						
Extremely Helpful	18.9%	10.4%	20.3%	13.6%	8.7%	16.2%
Very Helpful	35.8%	41.6%	39.8%	31.8%	34.8%	37.5%
Moderately Helpful	29.9%	31.2%	23.4%	29.5%	41.3%	29.6%
Slightly Helpful	11.0%	14.4%	10.9%	18.2%	10.9%	12.2%
Not Helpful	4.3%	2.4%	5.5%	6.8%	4.3%	4.4%
Number Responding	254	125	128	44	46	597
J. Developing Writing Skills						
Extremely Helpful	29.4%	25.4%	28.1%	15.9%	21.7%	26.7%
Very Helpful	33.3%	37.3%	32.0%	29.5%	34.8%	33.7%
Moderately Helpful	22.7%	26.2%	25.0%	22.7%	37.0%	25.0%
Slightly Helpful	10.6%	10.3%	13.3%	18.2%	2.2%	11.0%
Not Helpful	3.9%	0.8%	1.6%	13.6%	4.3%	3.5%
Number Responding	255	126	128	44	46	599
K. Developing Oral Communication Skills						
Extremely Helpful	29.4%	27.0%	32.3%	11.4%	23.9%	27.7%
Very Helpful	33.7%	39.7%	36.2%	47.7%	41.3%	37.1%
Moderately Helpful	24.2%	28.6%	21.3%	27.3%	28.3%	25.0%
Slightly Helpful	8.7%	4.8%	6.3%	13.6%	2.2%	7.2%
Not Helpful	4.0%	0.0%	3.9%	0.0%	4.3%	2.9%
Number Responding	252	126	127	44	46	595
L. Developing Knowledge of Scientific and Technological Developments						
Extremely Helpful	13.8%	4.0%	21.9%	38.6%	19.6%	15.7%
Very Helpful	28.5%	38.9%	29.7%	50.0%	52.2%	34.3%
Moderately Helpful	36.4%	35.7%	32.0%	9.1%	19.6%	32.0%
Slightly Helpful	17.0%	19.8%	11.7%	2.3%	4.3%	14.4%
Not Helpful	4.3%	1.6%	4.7%	0.0%	4.3%	3.5%
Number Responding	253	126	128	44	46	597

Southern Illinois University Edwardsville
Survey of 2006 Baccalaureate Graduates -- One Year Out
Survey Responses -- Part VI
Educational Effectiveness Questions

School Detail, con't.	CAS	Bus	Educ	Engr	Nursing	Total
27. Undergraduate Education Broadened Interest Beyond Subjects in Major						
Strongly Agree	22.7%	18.3%	18.5%	13.6%	10.9%	19.3%
Agree	49.0%	56.3%	47.7%	38.6%	45.7%	49.3%
Neutral	22.4%	16.7%	24.6%	31.8%	30.4%	23.0%
Disagree	5.5%	6.3%	8.5%	15.9%	10.9%	7.5%
Strongly Disagree	0.4%	2.4%	0.8%	0.0%	2.2%	1.0%
Number Responding	255	126	130	44	46	601
28. Importance of College Education to:						
A. Personal Life						
Very Important	63.5%	63.5%	65.4%	53.3%	73.9%	64.0%
Moderately Important	23.5%	23.8%	24.6%	28.9%	17.4%	23.8%
Slightly Important	9.4%	10.3%	6.9%	15.6%	8.7%	9.5%
Not Important	3.5%	2.4%	3.1%	2.2%	0.0%	2.8%
Number Responding	255	126	130	45	46	602
B. Community Life						
Very Important	31.8%	27.0%	43.8%	17.8%	39.1%	32.9%
Moderately Important	34.9%	38.1%	33.8%	42.2%	37.0%	36.0%
Slightly Important	23.5%	25.4%	17.7%	31.1%	15.2%	22.6%
Not Important	9.8%	9.5%	4.6%	8.9%	8.7%	8.5%
Number Responding	255	126	130	45	46	602
C. Professional Life						
Very Important	58.3%	67.5%	83.8%	86.7%	84.8%	69.9%
Moderately Important	22.8%	25.4%	11.5%	13.3%	8.7%	19.1%
Slightly Important	12.2%	2.4%	1.5%	0.0%	2.2%	6.2%
Not Important	6.7%	4.8%	3.1%	0.0%	4.3%	4.8%
Number Responding	254	126	130	45	46	601
29. Quality of SIUE Education Relative to That of Friends at Other Schools						
Among the Best	11.9%	11.1%	20.2%	22.2%	28.3%	15.6%
Above Average	42.1%	48.4%	41.9%	55.6%	41.3%	44.3%
Average	40.1%	36.5%	35.7%	22.2%	26.1%	36.0%
Below Average	5.6%	2.4%	2.3%	0.0%	2.2%	3.5%
Among the Worst	0.4%	1.6%	0.0%	0.0%	2.2%	0.7%
Number Responding	252	126	129	45	46	598
30. Involvement Since Bachelor's Degree with:						
A. Organized, Formal, Career Related Learning (non-degree)						
Currently Involved	22.3%	28.8%	33.1%	26.7%	39.1%	27.6%
Have Been Involved	32.7%	34.4%	39.4%	42.2%	43.5%	36.0%
Never Involved	45.0%	36.8%	27.6%	31.1%	17.4%	36.4%
Number Responding	251	125	127	45	46	594
B. Personal Enrichment Studies						
Currently Involved	25.8%	12.7%	26.2%	13.3%	21.7%	21.9%
Have Been Involved	31.3%	34.1%	37.7%	48.9%	47.8%	35.9%
Never Involved	42.9%	53.2%	36.2%	37.8%	30.4%	42.2%
Number Responding	252	126	130	45	46	599

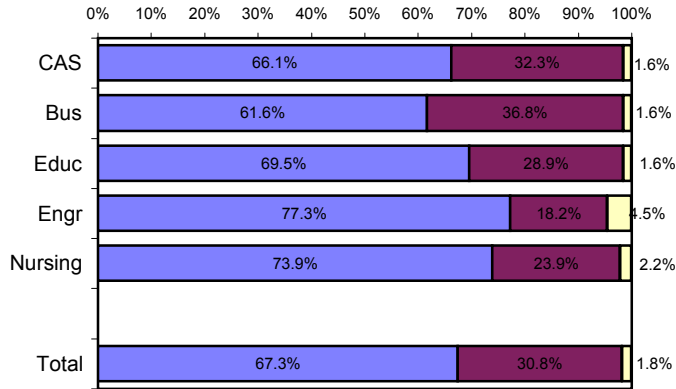
Southern Illinois University Edwardsville
Survey of 2006 Baccalaureate Graduates -- One Year Out
Survey Responses -- Part VI
Educational Effectiveness Questions

School Detail, con't.	CAS	Bus	Educ	Engr	Nursing	Total
C. Professional Activities or Organizations						
Currently Involved	33.2%	29.4%	43.1%	34.1%	43.5%	35.4%
Have Been Involved	34.0%	25.4%	30.8%	38.6%	34.8%	31.9%
Never Involved	32.8%	45.2%	26.2%	27.3%	21.7%	32.7%
Number Responding	253	126	130	44	46	599
D. Volunteer Work / Community Svc Activities or Organizations						
Currently Involved	28.2%	21.4%	31.5%	15.6%	26.1%	26.4%
Have Been Involved	34.5%	34.1%	36.2%	37.8%	34.8%	35.0%
Never Involved	37.3%	44.4%	32.3%	46.7%	39.1%	38.5%
Number Responding	255	126	130	45	46	602
E. Social / Recreational Activities or Organizations						
Currently Involved	37.3%	37.3%	33.1%	31.1%	39.1%	36.0%
Have Been Involved	37.3%	36.5%	43.1%	40.0%	37.0%	38.5%
Never Involved	25.5%	26.2%	23.8%	28.9%	23.9%	25.4%
Number Responding	255	126	130	45	46	602
F. Political Activities or Organizations						
Currently Involved	7.5%	7.1%	6.9%	0.0%	2.2%	6.3%
Have Been Involved	21.3%	11.9%	15.4%	8.9%	10.9%	16.3%
Never Involved	71.3%	81.0%	77.7%	91.1%	87.0%	77.4%
Number Responding	254	126	130	45	46	601
G. Religious / Ethical Activities or Organizations						
Currently Involved	32.2%	16.7%	29.2%	15.6%	33.3%	27.1%
Have Been Involved	25.9%	34.1%	23.8%	22.2%	20.0%	26.5%
Never Involved	42.0%	49.2%	46.9%	62.2%	46.7%	46.4%
Number Responding	255	126	130	45	45	601
H. Support or Participation in the Arts (music, drama, dance, art)						
Currently Involved	26.3%	8.0%	15.4%	11.1%	10.9%	17.8%
Have Been Involved	32.5%	25.6%	34.6%	15.6%	43.5%	31.1%
Never Involved	41.2%	66.4%	50.0%	73.3%	45.7%	51.1%
Number Responding	255	125	130	45	46	601
I. Reading books not directly related to your job						
Currently Involved	63.9%	50.0%	56.9%	33.3%	60.9%	57.0%
Have Been Involved	28.2%	31.7%	33.8%	28.9%	26.1%	30.1%
Never Involved	7.8%	18.3%	9.2%	37.8%	13.0%	13.0%
Number Responding	255	126	130	45	46	602

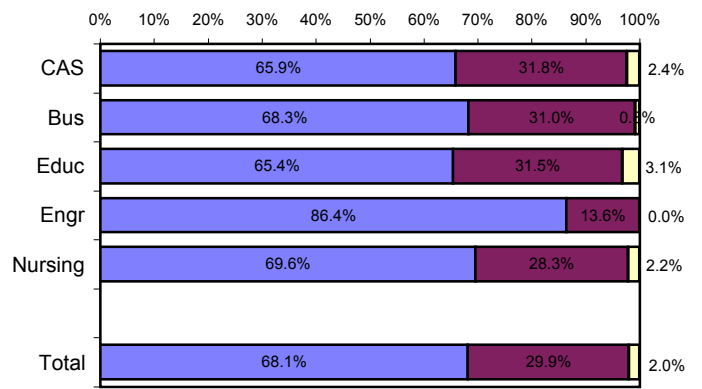
Helpfulness of University Experiences in:

■ Very to Extremely Helpful
 ■ Slightly to Moderately Helpful
 ■ Not Helpful

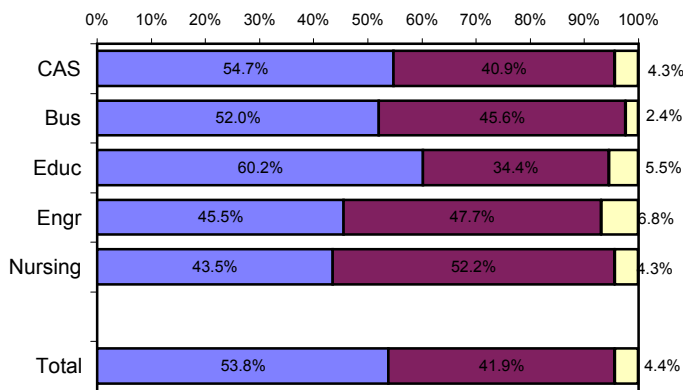
Viewing Problems from Different Perspectives



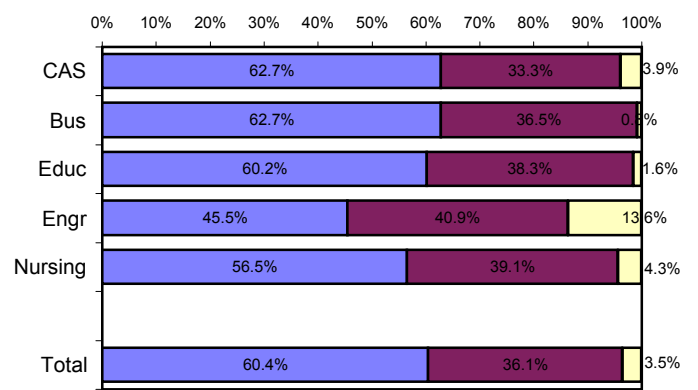
Developing Ability to Solve Problems



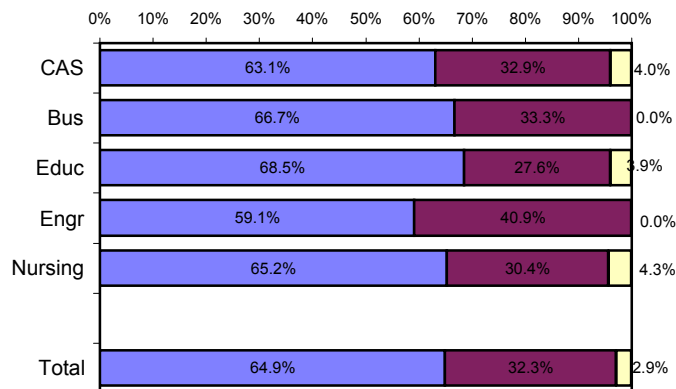
Making Informed Decisions as a Citizen



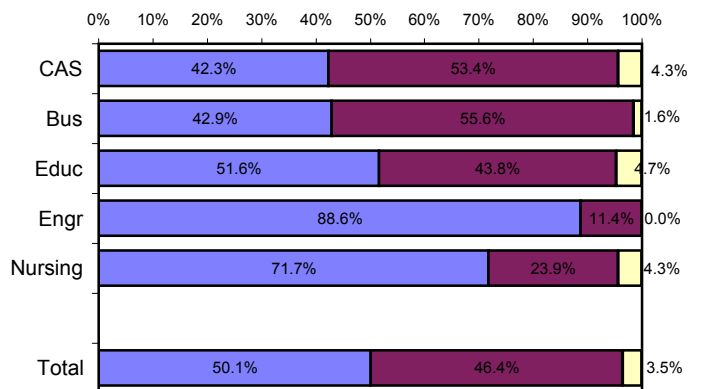
Developing Writing Skills



Developing Oral Communication Skills



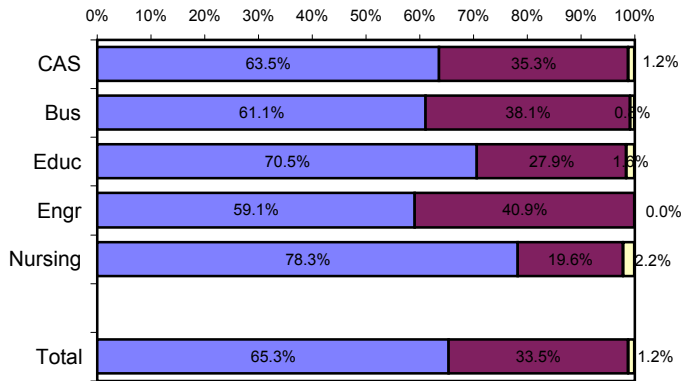
Developing Knowledge of Scientific and Technological Developments



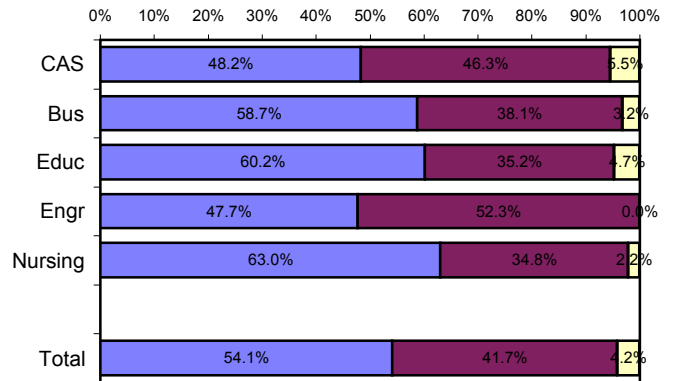
Helpfulness of University Experiences in:

■ Very to Extremely Helpful
 ■ Slightly to Moderately Helpful
 ■ Not Helpful

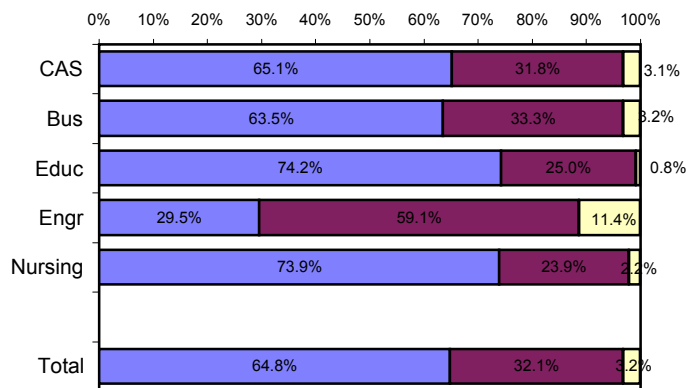
Developing Critical Thinking Ability



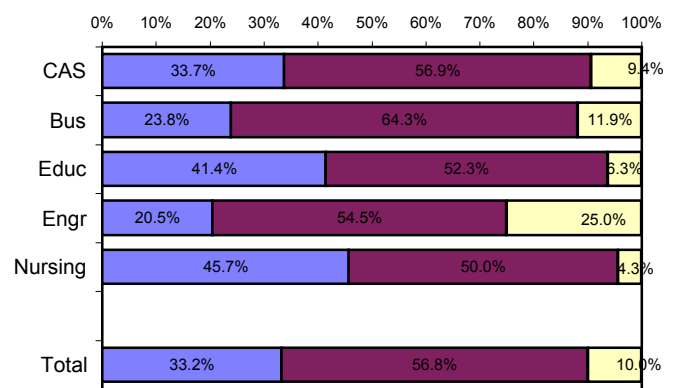
Developing Sense of Ethics



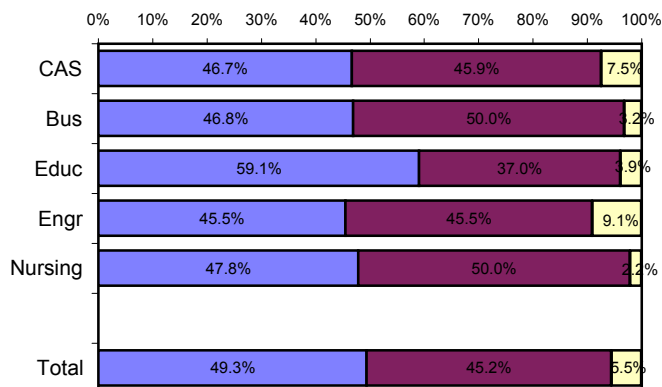
Understanding People with Different Backgrounds



Becoming a More Active Citizen



Improving Quality of Life (aside from financial benefits)



Developing Reasoning Skills

