

Southern Illinois University at Edwardsville
Survey of 2007 Baccalaureate Graduates -- One Year Out

Survey Results for Schools

April 2009

Survey Administered By
The Office of Undergraduate Assessment and Program Review

Survey Results Compiled By
The Office of Institutional Research and Studies

Southern Illinois University at Edwardsville

Survey of 2007 Baccalaureate Graduates -- One Year Out

Contents

Introduction

Methodology

Survey Population and Respondents

- Charts: *2007 Baccalaureate Recipients, Profile*
- \$ *Gender*
 - \$ *Race/Ethnic*
 - \$ *Age at Graduation*
 - \$ *Matriculation Status*
 - \$ *Time to Degree for New Freshmen*
 - \$ *Time to Degree for New Transfers*

- Table: *Comparison of All Graduates to Survey Respondents*

Survey Results

- Charts: *2007 Baccalaureate Graduates One Year Out, Satisfaction*
- \$ *Present Attitude Toward the University*
 - \$ *Present Attitude Towards Alumni=s Bachelor=s Degree Major*
 - \$ *Quality of SIUE Education Relative to That of Friends at Other Schools*

- 2007 Baccalaureate Graduates One Year Out, Additional Education*
- \$ *Enrolled Since Bachelors Degree*
 - \$ *How Well Bachelor=s Degree Prepared Alumni for Additional Degree*

- 2007 Baccalaureate Graduates One Year Out, Employment*
- \$ *Employment Status*
 - \$ *Place of Employment*
 - \$ *Job in Field Related to Major?*
 - \$ *Job Satisfaction*
 - \$ *How Well Bachelor=s Degree Program Prepared Alumni for Present Job*
 - \$ *Mean Salary of Alumni Employed Full Time*

- Helpfulness of University Experiences in:*
- \$ *Developing Critical Thinking Ability*
 - \$ *Developing Sense of Ethics*
 - \$ *Understanding People with Different Backgrounds*
 - \$ *Becoming a more Active Citizen*
 - \$ *Improving Quality of Life (aside from financial benefits)*
 - \$ *Developing Reasoning Skills*
 - \$ *Viewing Problems from Different Perspectives*
 - \$ *Developing Ability to Solve Problems*
 - \$ *Making Informed Decisions as a Citizen*

- \$ *Developing Writing Skills*
- \$ *Developing Oral Communication Skills*
- \$ *Developing Knowledge of Scientific and Technological Developments*

Tables:

<i>Part I</i>	<i>Employment Questions</i>
<i>Part II</i>	<i>Education Questions</i>
<i>Part III</i>	<i>Satisfaction Questions</i>
<i>Part IV</i>	<i>Educational Practices Questions</i>
<i>Part V</i>	<i>Program Quality Questions</i>
<i>Part VI</i>	<i>Educational Effectiveness Questions</i>

Questionnaire

Southern Illinois University Edwardsville Survey of 2007 Baccalaureate Graduates -- One Year Out

Introduction

This one-year out baccalaureate survey was done to provide data for the University's undergraduate program reviews and other planning uses, and to participate in the Illinois Board of Higher Education Baccalaureate Graduates= Follow-up System.

IBHE Survey Schedule and Population Definition		
Survey Year	Survey Type	Survey Group
1992	One-Year Out Survey	Class of >91
1993	Five-Year Out Survey	Class of >88
1994	Ten-Year Out Survey	Class of >84
1995	One-Year Out Survey	Class of >94
1996	Five-Year Out Survey	Class of >91
1997	Nine-Year Out Survey	Class of >88
1998	One-Year Out Survey	Class of >97
1999	Five-Year Out Survey	Class of >94
2000	Nine-Year Out Survey	Class of >91
2001	One-Year Out Survey	Class of >00
2002	Five-Year Out Survey	Class of >97
2003	Nine-Year Out Survey	Class of >94
2004	One-Year Out Survey	Class of '03
2005	Five-Year Out Survey	Class of '00
2006	Nine-Year Out Survey	Class of '97
2007	One-Year Out Survey	Class of '06
2008	Five-Year Out Survey	Class of '03
2009	Nine-Year Out Survey	Class of '00

After the first six years, the surveys were reviewed and changed, modifying some questions and value scales, and adding some additional questions.

The current survey was administered during the spring and summer of 2008 to calendar year 2007 baccalaureate graduates of SIUE. The questionnaire includes 18 questions common to all Illinois public universities. These are the first 18 questions in the survey, forming Parts I, II, III, and the beginning of Part IV (Employment Questions, Education Questions, Satisfaction Questions, and Educational Practices Questions). SIUE added to these one question on industry of employment and three additional questions on educational practices, and appended two additional parts to the survey to add questions about program quality, and educational effectiveness. (A questionnaire is included in Appendix A.)

Methodology

The survey questionnaire and a cover letter were adapted from the questionnaire and letter

developed for previous surveys. SIUE Alumni Services provided current addresses for calendar year 2007 graduates as determined from institutional records. The survey was distributed in May 2008 to May 2007 baccalaureate graduates and in August 2008 to August 2007 and December 2007 baccalaureate graduates. Each envelope included a cover letter, a questionnaire, and a postage-paid, pre-addressed return envelope. Each questionnaire was stamped with a sequential, identifying number which was also stamped on a listing of the graduates (this aided in identifying the surveys when returned).

On April 19th, 2008 approximately two weeks before the first set of surveys were to be mailed, a postcard was sent to the 1,143 May 2007 baccalaureate graduates, for whom addresses were available, notifying the alumni that they would be receiving a questionnaire and encouraging them to complete and return the survey. Surveys were mailed first class on May 5th, 2008. On May 19st, approximately three weeks after the survey was mailed and when the rate of survey returns had decreased, a follow-up postcard requesting that the survey be returned was mailed to each student who had not returned his or her survey. On June 9th a second wave mailing of the surveys was sent to the 800 remaining non-respondents.

The second distribution began with the preliminary postcard mailed on August 12th, 2008 to the 895 August and December 2007 baccalaureate graduates with known addresses. Surveys were mailed first class to this group on August 26th, 2008 with a follow-up post card mailed to non-responders on September 10th, 2008. A second wave mailing of the survey was sent to the non-responders on October 1st, 2008.

Returned surveys began arriving on May 12th and continued through the summer and fall, with a few arriving as late as March 2009. As the surveys came in, each was matched with the corresponding stamped listing. The students' names were then checked against the alphabetic list of alumni to verify (or, if the alumnus chose not to provide the identification number, to obtain) the student identification number. The student identification number was the key which allowed merging of survey data with administrative records (e.g., biographic, graduation, matriculation, and enrollment information).

Southern Illinois University Edwardsville
Survey of 2007 Baccalaureate Graduates -- One Year Out

Survey Population and Respondents

	Number of Graduates
2007 Baccalaureate Degrees	2,058
Less persons who received 2 baccalaureate degrees	21
2007 Baccalaureate Graduates	2,037
Less Graduates with No Address Available *	41
Graduates Surveyed	1,996
Less Non-Deliverable Surveys	101
Less Non-Responding Graduates	1,262
Survey Respondents	633
Gross Response Rate (Respondents/Total Surveyed)	31.71%
Adjusted Response Rate (Respondents/Delivered Surveys)	33.40%

* Includes deceased alumni, foreign addresses and known bad addresses.

Southern Illinois University Edwardsville
Survey of 2007 Baccalaureate Graduates -- One Year Out

Comparison of All Graduates to Survey Respondents

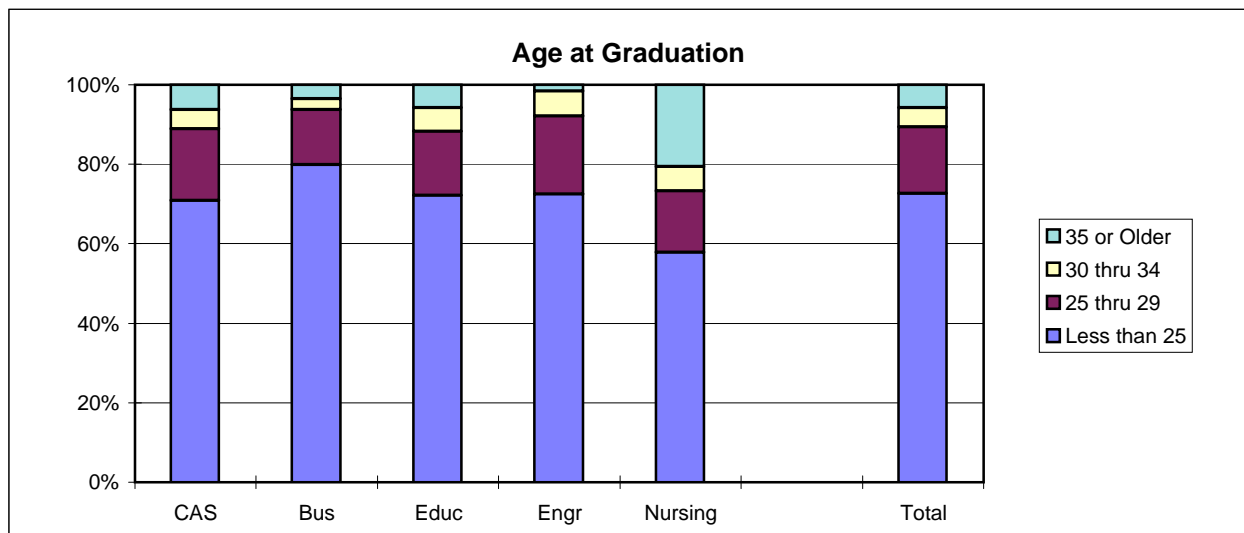
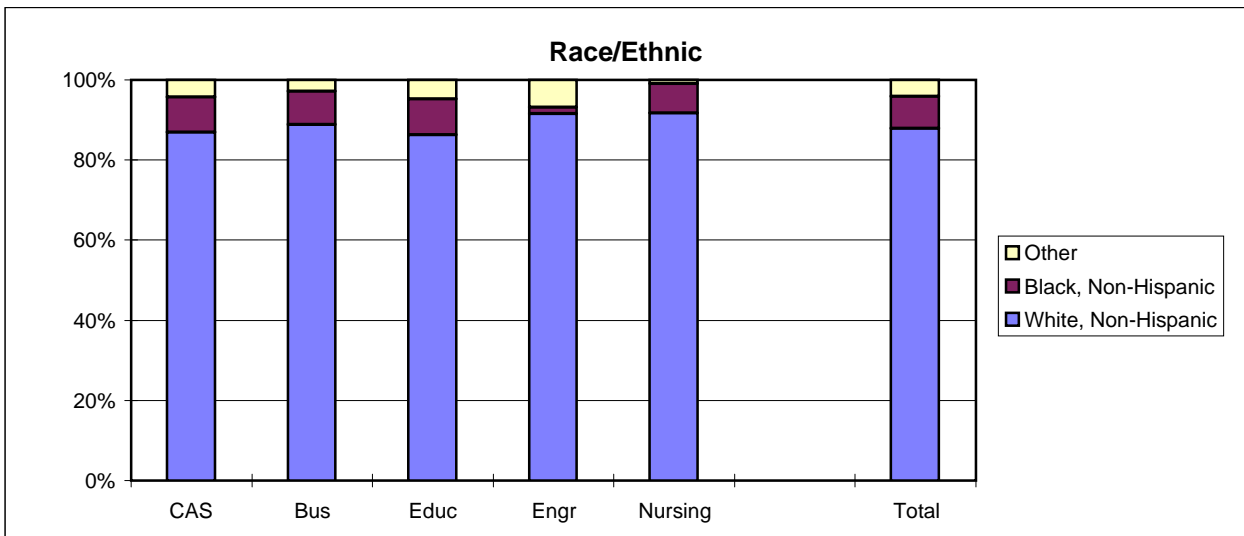
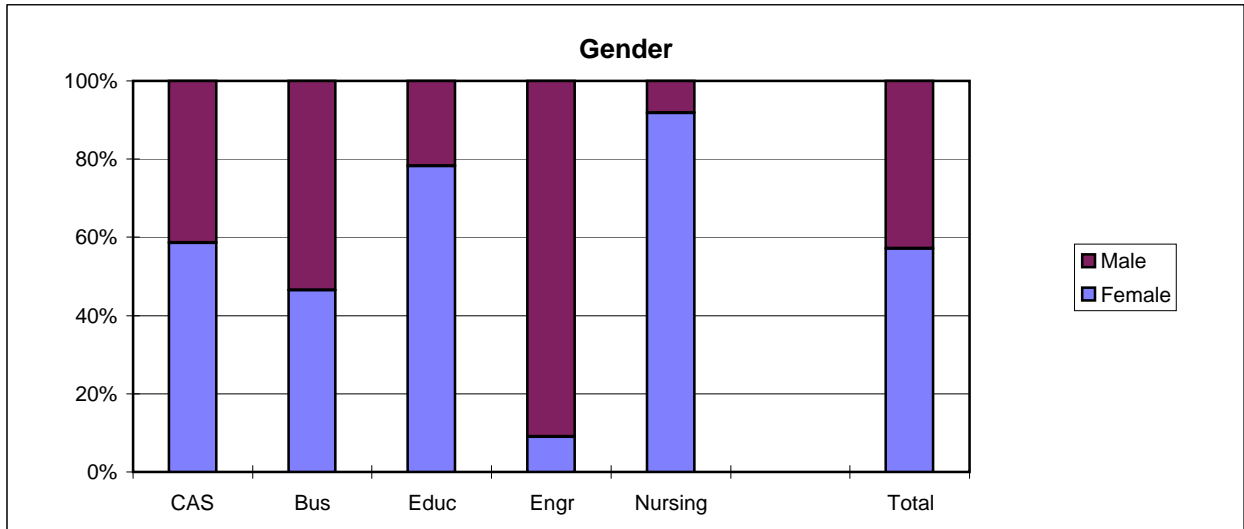
School Detail	All Graduates						
	CAS	Bus	Educ	Engr	Nursing	Total	
Total	851	456	444	189	97	2037	
Female	58.6%	46.5%	78.2%	9.0%	91.8%	57.1%	
Male	41.4%	53.5%	21.8%	91.0%	8.2%	42.9%	
Missing Data	0.0%	0.0%	0.0%	0.0%	0.0%	0.0%	
White, Non-Hispanic	86.6%	88.6%	86.0%	91.5%	91.8%	87.6%	
Black, Non-Hispanic	8.8%	8.3%	9.0%	1.6%	7.2%	8.0%	
Asian/Pacific Islander	1.3%	0.9%	1.1%	1.6%	1.0%	1.2%	
American Indian/Alaskan Native	0.4%	0.0%	0.2%	0.0%	0.0%	0.2%	
Hispanic	1.6%	0.4%	2.3%	0.5%	0.0%	1.3%	
Non-Resident Alien	0.9%	1.5%	1.1%	4.8%	0.0%	1.4%	
Missing Data	0.4%	0.2%	0.2%	0.0%	0.0%	0.2%	
Age at Graduation	range	20 to 66	20 to 58	20 to 50	21 to 61	21 to 55	20 to 66
	median	24.9	24.0	24.743	24.286	27.464	24.7
Bachelor of Science	69.8%	80.9%	91.9%	96.8%	100.0%	81.1%	
Bachelor of Music	2.5%	0.0%	0.0%	0.0%	0.0%	1.0%	
Bachelor of Arts	22.7%	0.0%	8.1%	3.2%	0.0%	11.5%	
Bachelor of Fine Arts	1.4%	0.0%	0.0%	0.0%	0.0%	0.6%	
Bachelor of Sci in Accountancy	0.0%	19.1%	0.0%	0.0%	0.0%	4.3%	
Bachelor of Liberal Studies	2.5%	0.0%	0.0%	0.0%	0.0%	1.0%	
Missing Data	0.0%	0.0%	0.0%	0.0%	0.0%	0.0%	
Graduated Spring 2007	48.8%	50.9%	68.9%	57.1%	83.5%	56.1%	
Graduated Summer 2007	20.0%	16.0%	12.4%	7.9%	4.1%	15.6%	
Graduated Fall 2007	31.3%	33.1%	18.7%	34.9%	12.4%	28.4%	
Missing Data	0.0%	0.0%	0.0%	0.0%	0.0%	0.0%	
Matriculated as a New Freshman	46.1%	52.4%	45.9%	49.2%	42.3%	47.6%	
Matriculated as a Transfer	53.1%	47.1%	53.2%	49.2%	55.7%	51.5%	
Matriculated as a Non-Degree Student	0.7%	0.4%	0.9%	1.6%	2.1%	0.8%	
Missing Data	0.0%	0.0%	0.0%	0.0%	0.0%	0.0%	
Time to Degree for New Freshmen							
3 Years or Fewer	5.6%	11.7%	2.5%	3.2%	2.4%	6.1%	
4 Years	46.2%	52.7%	54.4%	52.7%	73.2%	51.3%	
5 Years	26.8%	23.4%	27.5%	26.9%	9.8%	25.4%	
6 Years	10.2%	5.0%	8.8%	8.6%	4.9%	8.3%	
7 Years	3.3%	1.3%	1.5%	3.2%	4.9%	2.5%	
8 Years	1.5%	1.3%	1.5%	3.2%	2.4%	1.7%	
9 Years	1.0%	2.5%	1.0%	0.0%	0.0%	1.2%	
10 Years	1.5%	0.4%	0.5%	0.0%	0.0%	0.8%	
11 Years or More	3.8%	1.7%	2.5%	2.2%	2.4%	2.8%	
Missing Data	0.0%	0.0%	0.0%	0.0%	0.0%	0.0%	
Time to Degree for Transfers							
2 or Fewer Years	34.7%	37.2%	36.4%	28.0%	42.6%	35.4%	
3 Years	35.0%	29.3%	34.7%	38.7%	35.2%	34.1%	
4 Years	17.0%	18.1%	15.7%	18.3%	5.6%	16.5%	
5 Years	5.5%	5.1%	5.9%	8.6%	3.7%	5.7%	
6 Years	3.8%	2.8%	1.3%	1.1%	0.0%	2.6%	
7 Years	0.4%	3.3%	1.7%	2.2%	3.7%	1.6%	
8 Years	0.4%	2.8%	1.7%	3.2%	1.9%	1.5%	
9 Years	0.9%	0.0%	0.4%	0.0%	0.0%	0.5%	
10 Years or More	2.2%	1.4%	2.1%	0.0%	7.4%	2.1%	
Missing Data	0.0%	0.0%	0.0%	0.0%	0.0%	0.0%	
Graduating GPA (4 point scale)	Mean	3.134	3.023	3.358	2.983	3.322	3.153
	Std Dev	0.468	0.422	0.418	0.463	0.388	0.462

Southern Illinois University Edwardsville
Survey of 2007 Baccalaureate Graduates -- One Year Out

Comparison of All Graduates to Survey Respondents, cont.

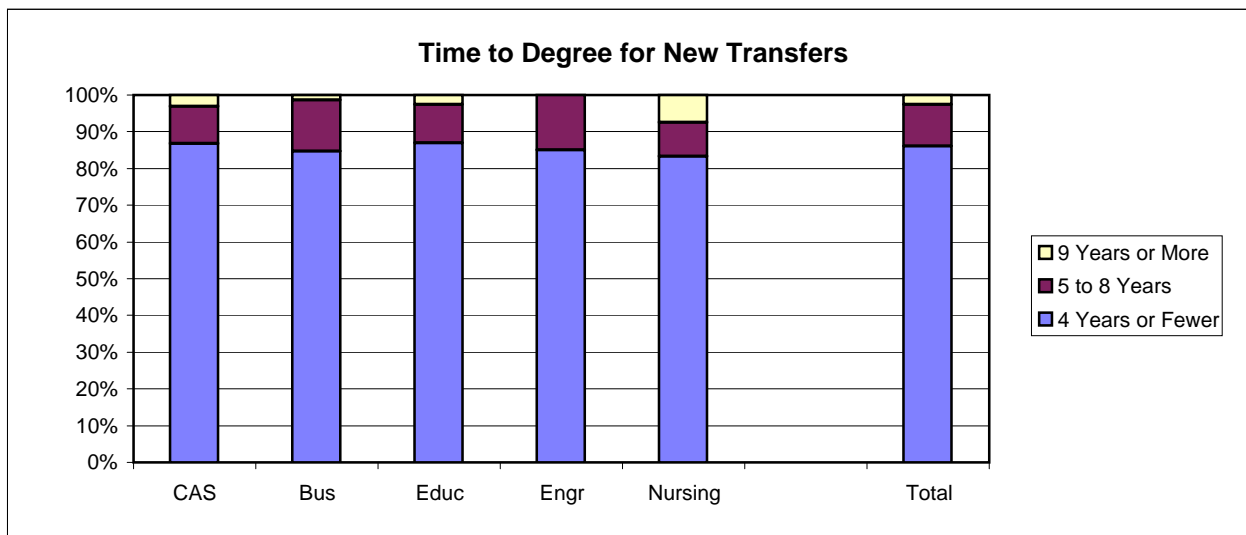
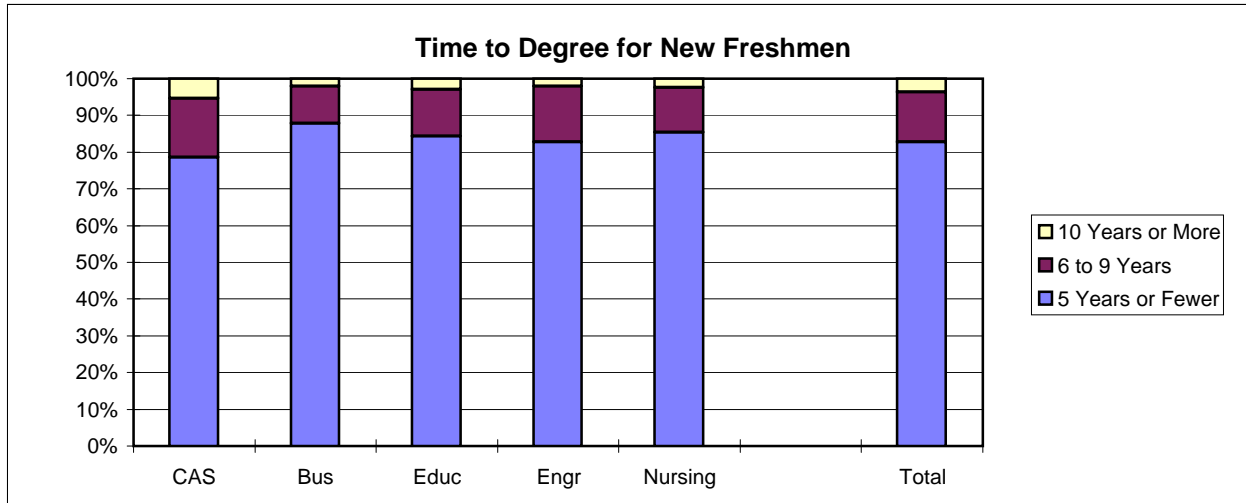
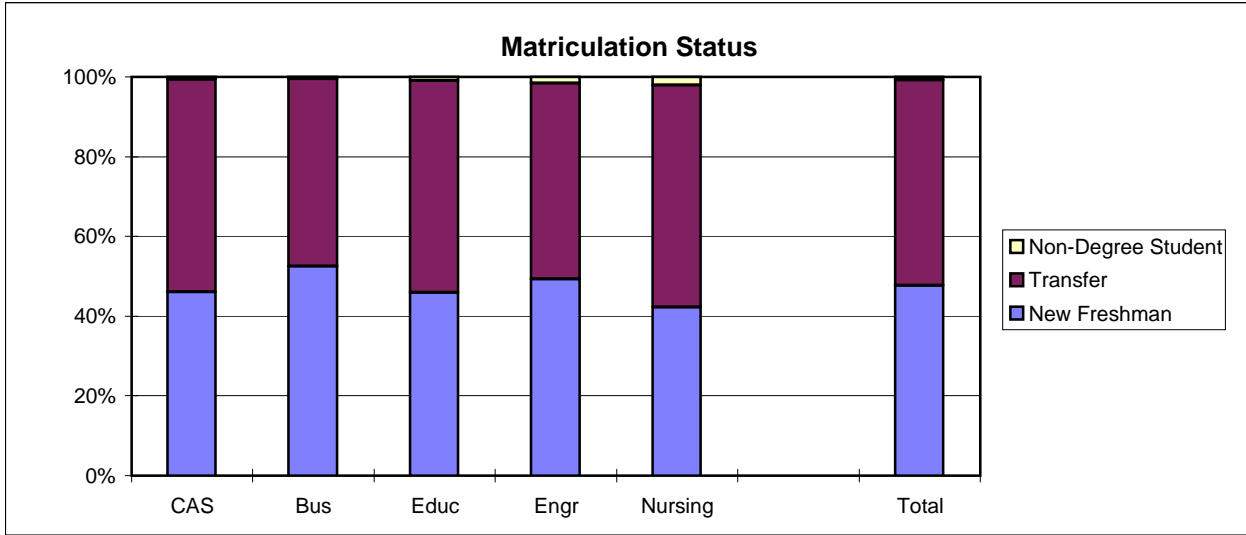
School Detail	All One Year Out Survey Respondents						
	CAS	Bus	Educ	Engr	Nursing	Total	
Total	247	139	146	60	41	633	
Female	65.2%	57.6%	87.7%	13.3%	92.7%	65.6%	
Male	34.8%	42.4%	12.3%	86.7%	7.3%	34.4%	
Missing Data	0.0%	0.0%	0.0%	0.0%	0.0%	0.0%	
White, Non-Hispanic	91.9%	95.0%	89.0%	98.3%	95.1%	92.7%	
Black, Non-Hispanic	5.3%	3.6%	7.5%	1.7%	2.4%	4.9%	
Asian/Pacific Islander	1.6%	0.0%	0.0%	0.0%	2.4%	0.8%	
American Indian/Alaskan Native	0.0%	0.0%	0.0%	0.0%	0.0%	0.0%	
Hispanic	0.8%	0.7%	1.4%	0.0%	0.0%	0.8%	
Non-Resident Alien	0.0%	0.0%	1.4%	0.0%	0.0%	0.3%	
Missing Data	0.4%	0.7%	0.7%	0.0%	0.0%	0.5%	
Age at Graduation	range	20 to 66	20 to 58	21 to 49	21 to 61	21 to 55	20 to 66
	median	24.87	24.2	25.007	24.3	28.39	24.918
Bachelor of Science	72.1%	76.3%	89.7%	98.3%	100.0%	81.4%	
Bachelor of Music	2.4%	0.0%	0.0%	0.0%	0.0%	0.9%	
Bachelor of Arts	21.5%	0.0%	10.3%	1.7%	0.0%	10.9%	
Bachelor of Fine Arts	0.8%	0.0%	0.0%	0.0%	0.0%	0.3%	
Bachelor of Sci in Accountancy	0.0%	23.7%	0.0%	0.0%	0.0%	5.2%	
Bachelor of Liberal Studies	3.2%	0.0%	0.0%	0.0%	0.0%	1.3%	
Missing Data	0.0%	0.0%	0.0%	0.0%	0.0%	0.0%	
Graduated Spring 2007	55.1%	57.6%	71.2%	66.7%	78.0%	61.9%	
Graduated Summer 2007	17.4%	15.1%	11.0%	6.7%	0.0%	13.3%	
Graduated Fall 2007	27.5%	27.3%	17.8%	26.7%	22.0%	24.8%	
Missing Data	0.0%	0.0%	0.0%	0.0%	0.0%	0.0%	
Matriculated as a New Freshman	47.8%	51.8%	49.3%	56.7%	36.6%	49.1%	
Matriculated as a Transfer	51.8%	47.5%	50.0%	41.7%	61.0%	50.1%	
Matriculated as a Non-Degree Student	0.4%	0.7%	0.7%	1.7%	2.4%	0.8%	
Missing Data	0.0%	0.0%	0.0%	0.0%	0.0%	0.0%	
Time to Degree for New Freshmen							
3 Years or Fewer	9.3%	19.4%	4.2%	0.0%	0.0%	9.0%	
4 Years	51.7%	50.0%	63.9%	64.7%	86.7%	57.2%	
5 Years	26.3%	22.2%	23.6%	26.5%	6.7%	23.8%	
6 Years	6.8%	5.6%	5.6%	2.9%	0.0%	5.5%	
7 Years	1.7%	1.4%	0.0%	5.9%	6.7%	1.9%	
8 Years	0.8%	0.0%	0.0%	0.0%	0.0%	0.3%	
9 Years	0.8%	1.4%	1.4%	0.0%	0.0%	1.0%	
10 Years	0.8%	0.0%	0.0%	0.0%	0.0%	0.3%	
11 Years or More	1.7%	0.0%	1.4%	0.0%	0.0%	1.0%	
Missing Data	0.0%	0.0%	0.0%	0.0%	0.0%	0.0%	
Time to Degree for Transfers							
2 or Fewer Years	37.5%	39.4%	41.1%	20.0%	60.0%	39.1%	
3 Years	35.9%	25.8%	35.6%	44.0%	24.0%	33.4%	
4 Years	14.8%	18.2%	11.0%	20.0%	4.0%	14.2%	
5 Years	3.9%	3.0%	5.5%	12.0%	4.0%	4.7%	
6 Years	3.9%	4.5%	1.4%	0.0%	0.0%	2.8%	
7 Years	0.0%	3.0%	2.7%	0.0%	0.0%	1.3%	
8 Years	0.0%	3.0%	1.4%	4.0%	4.0%	1.6%	
9 Years	1.6%	0.0%	0.0%	0.0%	0.0%	0.6%	
10 Years or More	2.3%	3.0%	1.4%	0.0%	4.0%	2.2%	
Missing Data	0.0%	0.0%	0.0%	0.0%	0.0%	0.0%	
Graduating GPA (4 point scale)	Mean	3.240	3.103	3.449	3.072	3.380	3.251
	Std Dev	0.460	0.437	0.390	0.497	0.377	0.457

2007 Baccalaureate Recipients Profile



2007 Baccalaureate Recipients

Profile, cont.



Southern Illinois University Edwardsville
Survey of 2007 Baccalaureate Graduates -- One Year Out
Survey Responses -- Part I
Employment Questions

School Detail	CAS	Bus	Educ	Engr	Nursing	Total
Number of Survey Respondents *	247	139	146	60	41	633
1. Number Employed:						
Full-time	69.5%	86.9%	75.5%	96.7%	97.6%	79.1%
Part-time	14.2%	8.8%	13.3%	3.3%	2.4%	11.0%
Not, but Seeking	4.5%	1.5%	7.0%	0.0%	0.0%	3.7%
Not, not Seeking	11.8%	2.9%	4.2%	0.0%	0.0%	6.2%
Number Responding	246	137	143	60	41	627
The remaining questions in Part I were to be answered only by respondents who were employed full-time or part-time.						
	206	131	127	60	41	565
2. Place of Employment						
Illinois	66.1%	53.2%	79.5%	45.6%	62.9%	63.5%
Missouri	22.8%	38.1%	13.7%	36.8%	34.3%	26.7%
Other	11.1%	8.7%	6.8%	17.5%	2.9%	9.7%
Number Responding	189	126	117	57	35	524
3. Classification of Primary Employer						
Self-Employed or Private Practice	3.9%	5.3%	0.8%	1.7%	2.4%	3.2%
Business (Industrial, Commercial or Service)	37.4%	61.1%	19.8%	43.3%	0.0%	36.9%
Professional Firm (e.g., Engineering, Law)	5.3%	12.2%	0.0%	45.0%	0.0%	9.6%
College or University	10.2%	4.6%	7.9%	3.3%	0.0%	6.9%
Elementary/Secondary School	10.2%	1.5%	53.2%	0.0%	2.4%	16.1%
Health Agency (e.g. Hospital, Clinic)	4.9%	2.3%	4.0%	0.0%	95.1%	10.1%
Federal, State, or Local Government	13.1%	6.1%	4.8%	6.7%	0.0%	8.0%
Armed Services	2.4%	0.8%	0.8%	0.0%	0.0%	1.2%
NonProfit (Non-Government)	9.7%	4.6%	4.8%	0.0%	0.0%	5.7%
Other	2.9%	1.5%	4.0%	0.0%	0.0%	2.3%
Number Responding	206	131	126	60	41	564
4. Job Satisfaction						
Very Satisfied	23.9%	35.7%	34.9%	41.7%	26.8%	31.2%
Satisfied	39.0%	41.1%	35.7%	40.0%	48.8%	39.6%
Somewhat Satisfied	26.3%	16.3%	17.5%	11.7%	22.0%	20.1%
Somewhat Dissatisfied	5.4%	3.9%	4.0%	5.0%	0.0%	4.3%
Dissatisfied	4.4%	2.3%	4.8%	0.0%	0.0%	3.2%
Very Dissatisfied	1.0%	0.8%	3.2%	1.7%	2.4%	1.6%
Number Responding	205	129	126	60	41	561
5. Job in Field?						
Closely Related	39.0%	54.2%	64.6%	80.0%	97.6%	56.9%
Related	24.4%	32.1%	16.5%	18.3%	2.4%	22.2%
Unrelated (choice unknown)	0.0%	0.0%	0.0%	0.0%	0.0%	0.0%
Unrelated (by choice)	17.1%	6.1%	7.9%	0.0%	0.0%	9.4%
Unrelated (not by choice)	19.5%	7.6%	11.0%	1.7%	0.0%	11.5%
Number Responding	205	131	127	60	41	564
6. Timing of Securing First Job After Degree						
Held the Same Job While Enrolled	21.6%	16.0%	7.9%	25.4%	26.8%	18.0%
Secured Job by Graduation	20.6%	34.4%	31.0%	59.3%	46.3%	32.1%
Secured Job After Graduation(timing unknown)	0.5%	0.0%	1.6%	0.0%	0.0%	0.5%
Less than 1 Month After Graduation	5.9%	9.9%	8.7%	3.4%	7.3%	7.3%
1 to 3 Months After Graduation	16.2%	13.0%	22.2%	5.1%	9.8%	15.2%
3 to 6 Months After Graduation	18.6%	13.0%	18.3%	3.4%	2.4%	14.4%
6 to 9 Months After Graduation	10.3%	9.2%	6.3%	3.4%	4.9%	8.0%
More than 9 Months After Graduation	6.4%	4.6%	4.0%	0.0%	2.4%	4.5%
Number Responding	204	131	126	59	41	561

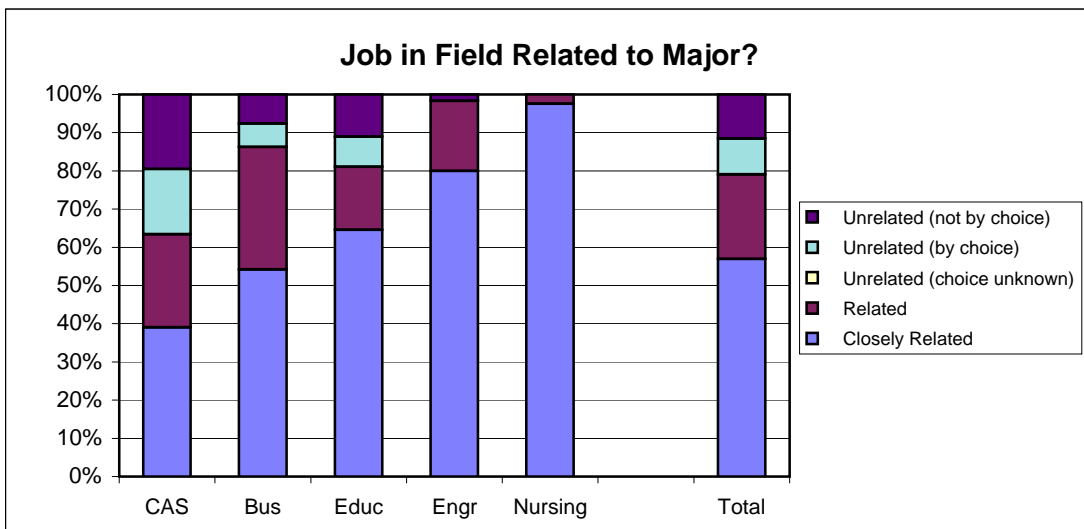
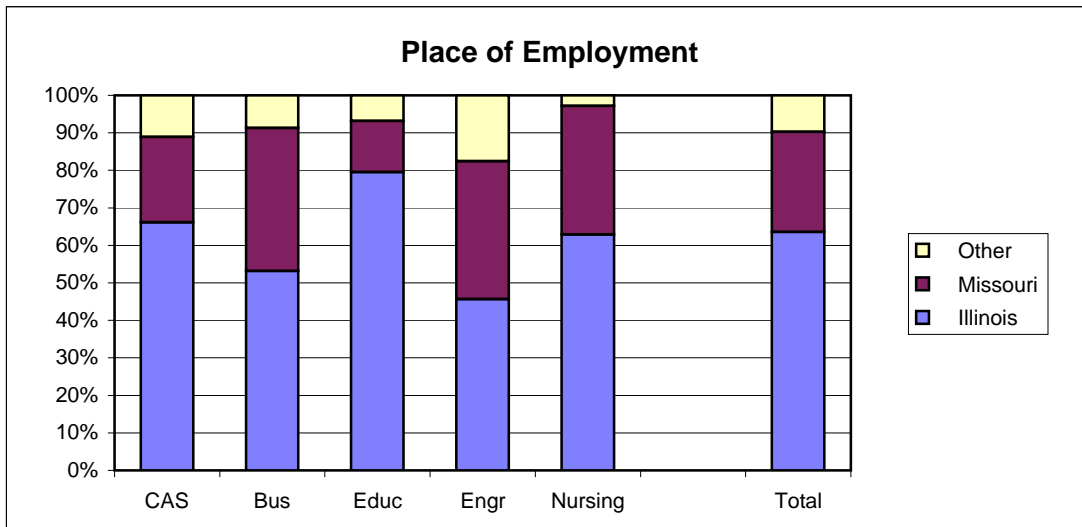
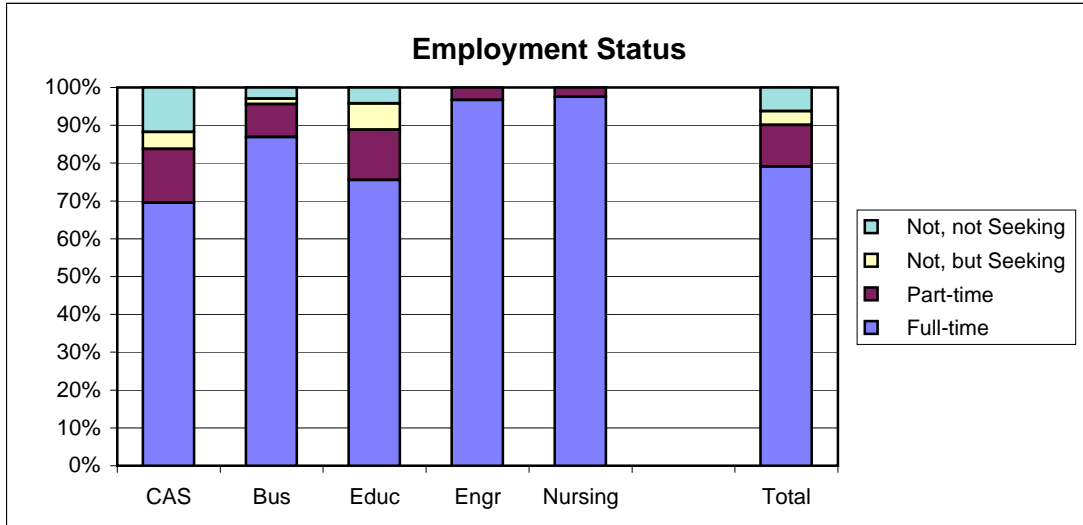
Southern Illinois University Edwardsville
Survey of 2007 Baccalaureate Graduates -- One Year Out
Survey Responses -- Part I
Employment Questions

School Detail, cont.	CAS	Bus	Educ	Engr	Nursing	Total
7. Annual Earned Income in Current Job Before Taxes						
Employed Full-Time						
Less Than \$15,000	7.8%	0.9%	3.8%	0.0%	0.0%	3.6%
\$15,000 to 19,999	7.2%	1.7%	4.8%	0.0%	0.0%	3.9%
\$20,000 to \$24,999	13.7%	10.4%	15.2%	0.0%	0.0%	10.5%
\$25,000 to \$29,999	16.3%	10.4%	16.2%	0.0%	5.3%	12.0%
\$30,000 to \$34,999	21.6%	20.0%	40.0%	1.8%	15.8%	22.5%
\$35,000 to \$39,999	13.7%	20.0%	14.3%	1.8%	26.3%	15.0%
\$40,000 or More	19.6%	36.5%	5.7%	96.4%	52.6%	32.4%
Number Responding	153	115	105	55	38	466
Mean Salary	\$31,135	\$37,460	\$29,872	\$52,110	\$41,880	\$35,763
Employed Part-Time						
Less Than \$5,000	21.4%	0.0%	7.7%	0.0%	0.0%	13.7%
5,000 to \$9,999	25.0%	0.0%	30.8%	0.0%	0.0%	21.6%
\$10,000 to \$14,999	21.4%	87.5%	30.8%	0.0%	0.0%	33.3%
\$15,000 to \$19,999	14.3%	0.0%	7.7%	50.0%	0.0%	11.8%
\$20,000 or More	17.9%	12.5%	23.1%	50.0%	0.0%	19.6%
Number Responding	28	8	13	2	0	51
Mean Salary	\$12,178	\$13,250	\$14,441	\$22,034	\$0	\$13,309
8. Bachelor's Degree Preparation for Job						
Very Well	17.5%	12.4%	26.0%	11.7%	24.4%	18.1%
Well	26.0%	45.7%	33.9%	53.3%	43.9%	36.6%
Adequately	35.0%	35.7%	27.6%	25.0%	31.7%	32.1%
Inadequately	12.0%	5.4%	7.9%	6.7%	0.0%	8.1%
Poorly	4.0%	0.0%	3.9%	3.3%	0.0%	2.7%
Very Poorly	5.5%	0.8%	0.8%	0.0%	0.0%	2.3%
Number Responding	200	129	127	60	41	557
9a. Primary Occupation						
Management	4.1%	17.2%	0.8%	11.9%	2.5%	7.1%
Business Operations	7.7%	15.6%	1.6%	0.0%	0.0%	6.8%
Financial Specialists	1.5%	25.0%	2.4%	0.0%	0.0%	6.9%
Computer Specialists	2.6%	9.4%	0.0%	5.1%	0.0%	3.6%
Mathematical Scientists and Technicians	0.0%	0.0%	0.0%	0.0%	0.0%	0.0%
Architects, Surveyors, and Cartographers	0.5%	0.0%	0.0%	1.7%	0.0%	0.4%
Engineers and Related Technicians	0.0%	0.8%	0.0%	71.2%	0.0%	7.8%
Life & Physical Scientists, and Technicians	8.2%	0.0%	0.8%	0.0%	0.0%	3.1%
Social Scientists	0.5%	0.0%	2.4%	0.0%	0.0%	0.7%
Health: Doctors	0.0%	0.0%	0.8%	0.0%	0.0%	0.2%
Health: Registered Nurses	0.0%	0.0%	0.0%	0.0%	95.0%	6.9%
Health: Therapists	0.0%	0.0%	0.8%	0.0%	0.0%	0.2%
Health: Oth Practitnrs, Prof.s, & Suppt Wkrs	5.1%	0.0%	4.8%	0.0%	0.0%	2.9%
Community & Social Service	7.7%	0.8%	11.2%	0.0%	0.0%	5.5%
Legal: Attorneys/Judges	1.0%	0.0%	0.0%	0.0%	0.0%	0.4%
Legal: Legal Support Workers	1.0%	0.8%	0.0%	0.0%	0.0%	0.5%
Education: Early Childhood Teachers	0.5%	0.0%	9.6%	0.0%	0.0%	2.4%
Education: Elementary School Teachers	0.0%	0.0%	16.8%	0.0%	0.0%	3.8%
Education: Middle School Teachers	1.5%	0.0%	8.8%	0.0%	0.0%	2.6%
Education: Secondary School Teachers	5.6%	0.0%	2.4%	0.0%	0.0%	2.6%
Education: Special Education Teachers	1.0%	0.0%	12.8%	0.0%	0.0%	3.3%
Education: Other, except Administrators	10.2%	2.3%	12.8%	1.7%	2.5%	7.5%
continued						

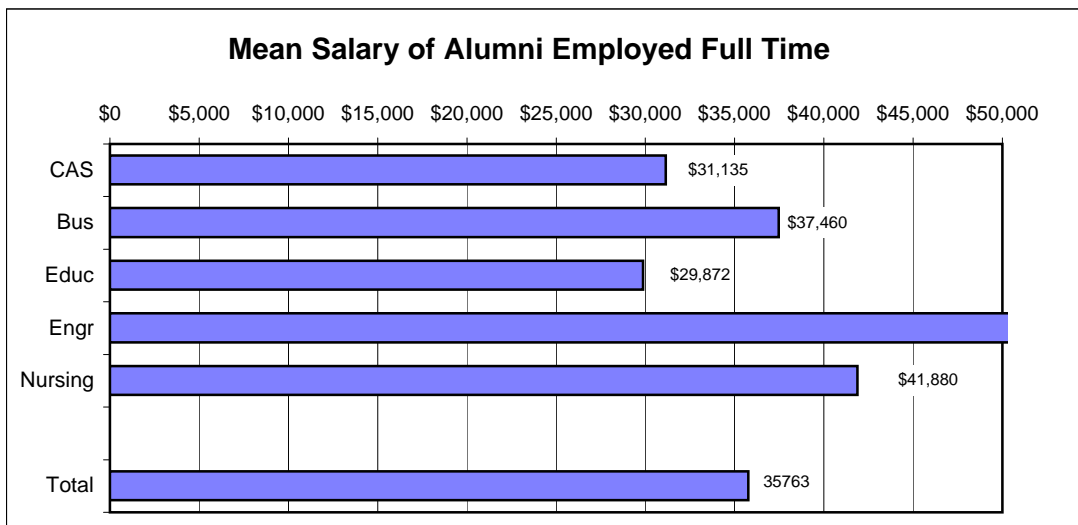
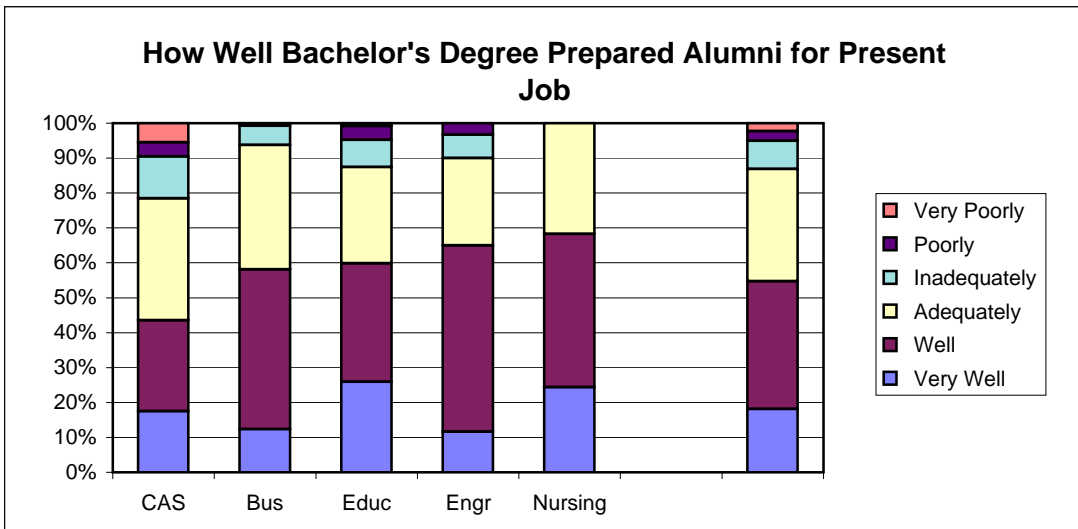
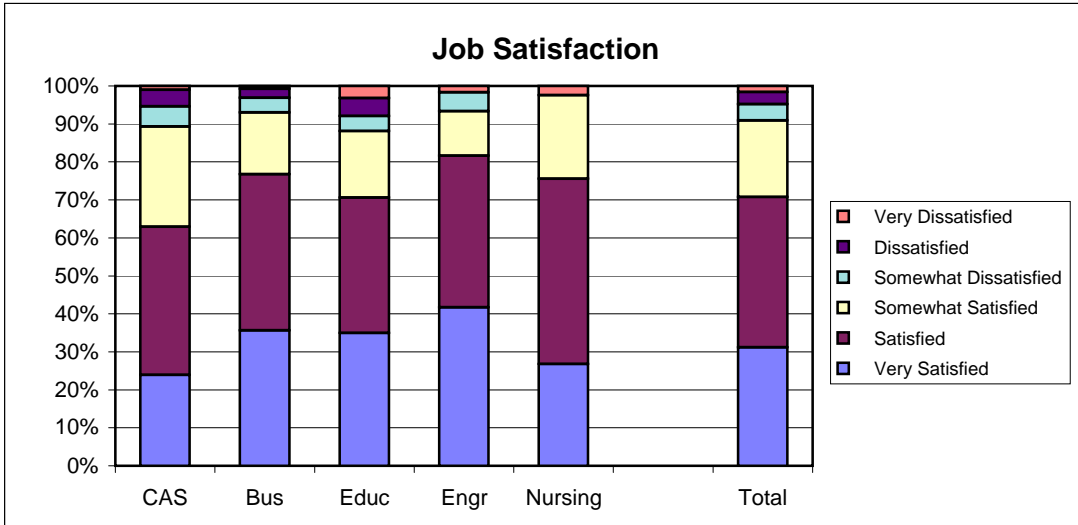
Southern Illinois University Edwardsville
Survey of 2007 Baccalaureate Graduates -- One Year Out
Survey Responses -- Part I
Employment Questions

School Detail, cont.	CAS	Bus	Educ	Engr	Nursing	Total
9a. continuation of Primary Occupation						
Library Occupations	0.0%	0.0%	0.0%	0.0%	0.0%	0.0%
Art and Design Workers	2.6%	0.0%	0.0%	0.0%	0.0%	0.9%
Entertainment, Performers, Sports & Related	1.5%	0.8%	0.8%	0.0%	0.0%	0.9%
Media and Communication Workers	4.1%	0.8%	0.0%	0.0%	0.0%	1.6%
Sales	6.1%	8.6%	4.0%	0.0%	0.0%	5.1%
Office & Administration	7.7%	11.7%	4.0%	0.0%	0.0%	6.4%
Protective Services	5.6%	0.8%	0.0%	0.0%	0.0%	2.2%
Food Preparation & Serving	4.6%	0.8%	0.0%	0.0%	0.0%	1.8%
Buildings & Grounds Maintenance	0.5%	0.0%	0.0%	0.0%	0.0%	0.2%
Personal Care and Service	3.1%	0.0%	0.0%	0.0%	0.0%	1.1%
Farming, Fishing, and Forestry	0.5%	0.0%	0.0%	0.0%	0.0%	0.2%
Construction & Extractive	1.0%	0.8%	0.8%	6.8%	0.0%	1.5%
Installation, Maintenance, & Repair	0.5%	0.8%	0.0%	1.7%	0.0%	0.5%
Production	0.5%	2.3%	1.6%	0.0%	0.0%	1.1%
Transportation and Material Moving	0.5%	0.0%	0.0%	0.0%	0.0%	0.2%
Military	2.6%	0.8%	0.0%	0.0%	0.0%	1.1%
Number Responding	196	128	125	59	40	548
9b. Industry						
Agriculture, Forestry, and Fishing	1.8%	1.7%	0.0%	1.9%	0.0%	1.3%
Mining	0.0%	0.0%	0.0%	1.9%	0.0%	0.2%
Utilities	1.2%	2.6%	0.0%	1.9%	0.0%	1.3%
Construction	2.4%	0.9%	2.0%	34.6%	0.0%	5.3%
Manufacturing	4.2%	13.0%	2.0%	13.5%	0.0%	6.6%
Wholesale Trade	1.2%	2.6%	1.0%	0.0%	0.0%	1.3%
Retail Trade	6.5%	10.4%	5.9%	0.0%	0.0%	6.2%
Transportation	1.8%	1.7%	0.0%	11.5%	0.0%	2.3%
Information	3.0%	2.6%	0.0%	0.0%	0.0%	1.7%
Finance & Insurance	4.2%	20.0%	3.0%	1.9%	0.0%	7.2%
Real Estate & Rental & Leasing	1.2%	1.7%	0.0%	0.0%	0.0%	0.9%
Professional, Scientific & Technical Services	10.1%	9.6%	2.0%	30.8%	0.0%	9.8%
Management of Companies & Enterprises	2.4%	0.9%	0.0%	0.0%	0.0%	1.1%
Admin & Suppt, Waste Mgmt & Remedtn Svcs	0.0%	1.7%	0.0%	0.0%	0.0%	0.4%
Educational Services	17.3%	4.3%	60.4%	1.9%	5.9%	20.9%
Health Care & Social Assistance	16.1%	7.8%	16.8%	0.0%	94.1%	18.1%
Arts, Entertainment & Recreation	6.5%	0.9%	1.0%	0.0%	0.0%	2.8%
Accommodations & Food Services	7.7%	2.6%	0.0%	0.0%	0.0%	3.4%
Other Services (except Public Admin)	8.9%	12.2%	5.0%	0.0%	0.0%	7.2%
Public Administration	3.6%	2.6%	1.0%	0.0%	0.0%	2.1%
Number Responding	168	115	101	52	34	470

2007 Baccalaureate Graduates One Year Out Employment



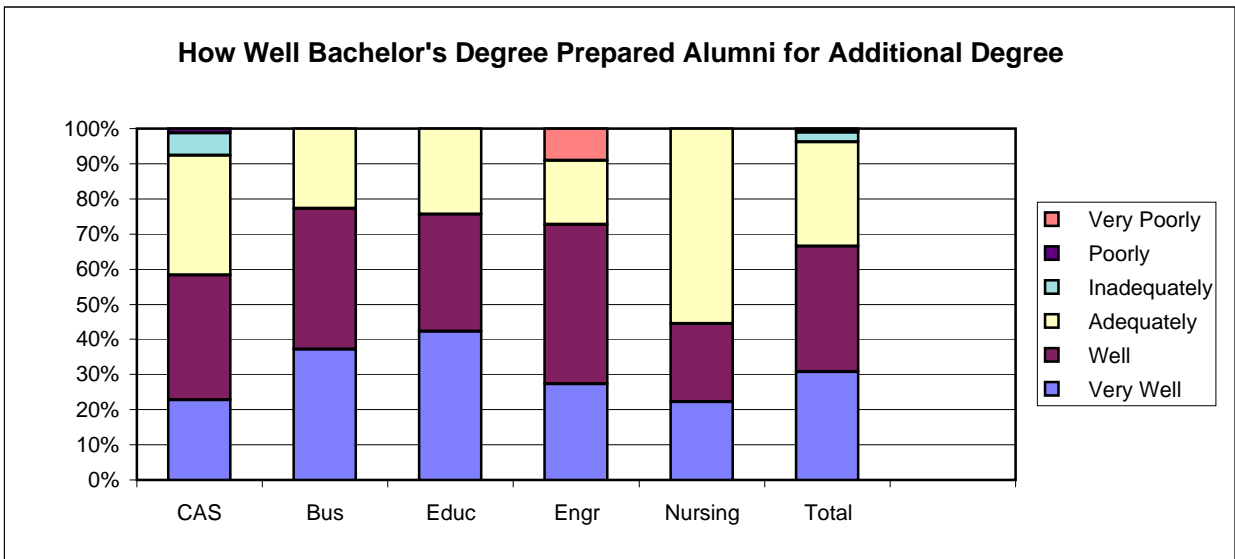
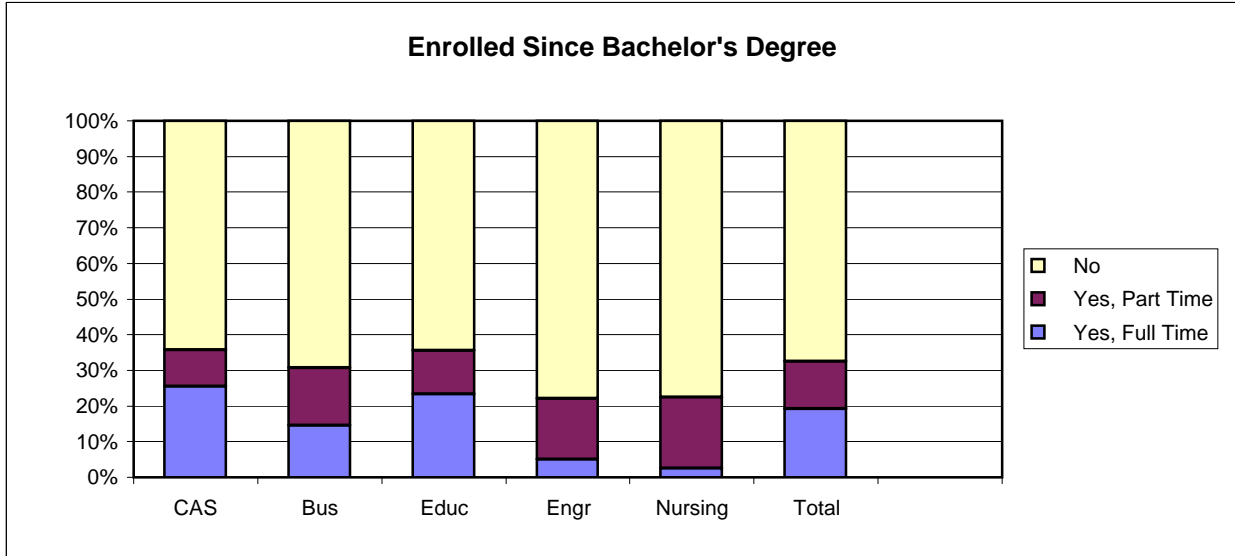
2007 Baccalaureate Graduates One Year Out *Employment, cont.*



Southern Illinois University Edwardsville
Survey of 2007 Baccalaureate Graduates -- One Year Out
Survey Responses -- Part II
Education Questions

School Detail	CAS	Bus	Educ	Engr	Nursing	Total
Number of Survey Respondents	247	139	146	60	41	633
10. Enrolled in College or University Since Degree?						
Yes, Full Time	25.4%	14.6%	23.3%	5.1%	2.5%	19.2%
Yes, Part Time	10.2%	16.1%	12.3%	16.9%	20.0%	13.3%
No	64.3%	69.3%	64.4%	78.0%	77.5%	67.6%
Number Responding	244	137	146	59	40	626
11. Pursuing or Have Completed an Additional Degree?						
Yes	92.0%	85.7%	88.5%	84.6%	100.0%	89.7%
No	8.0%	14.3%	11.5%	15.4%	0.0%	10.3%
Number Responding	87	42	52	13	9	203
The remaining questions in Part II were to be answered only by respondents who were pursuing or had completed another degree.						
	80	36	46	11	9	182
11b. Pursuing or Completed Which Degree?						
Associate's	0.0%	2.9%	2.2%	0.0%	0.0%	1.1%
Second Bachelor's	11.3%	0.0%	6.7%	9.1%	0.0%	7.2%
Academic Master's (MA, MS, MEd, etc)	40.0%	22.9%	51.1%	45.5%	55.6%	40.6%
Prof. Master's or Ed Specialist	20.0%	71.4%	31.1%	36.4%	33.3%	34.4%
Medicine (MD, OD)	6.3%	0.0%	0.0%	0.0%	0.0%	2.8%
Health Prof. (dentistry, pharmacy, etc.)	12.5%	0.0%	2.2%	0.0%	11.1%	6.7%
Theology/Divinity	0.0%	0.0%	0.0%	0.0%	0.0%	0.0%
Law (LLB, JD)	2.5%	2.9%	2.2%	0.0%	0.0%	2.2%
Doctorate (PhD, EdD, DA, DBA, etc.)	3.8%	0.0%	4.4%	9.1%	0.0%	3.3%
Other	3.8%	0.0%	0.0%	0.0%	0.0%	1.7%
Number Responding	80	35	45	11	9	180
12. How Well Bach. Degree Prepared You for Additional Degree						
Very Well	22.8%	37.1%	42.2%	27.3%	22.2%	30.7%
Well	35.4%	40.0%	33.3%	45.5%	22.2%	35.8%
Adequately	34.2%	22.9%	24.4%	18.2%	55.6%	29.6%
Inadequately	6.3%	0.0%	0.0%	0.0%	0.0%	2.8%
Poorly	1.3%	0.0%	0.0%	0.0%	0.0%	0.6%
Very Poorly	0.0%	0.0%	0.0%	9.1%	0.0%	0.6%
Number Responding	79	35	45	11	9	179

2007 Baccalaureate Graduates One Year Out Additional Education

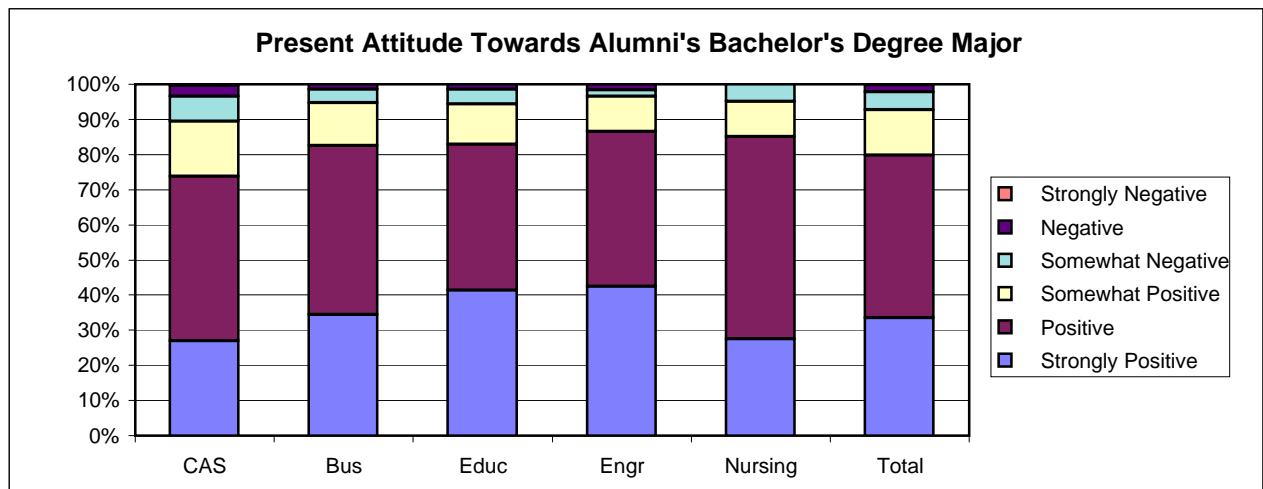
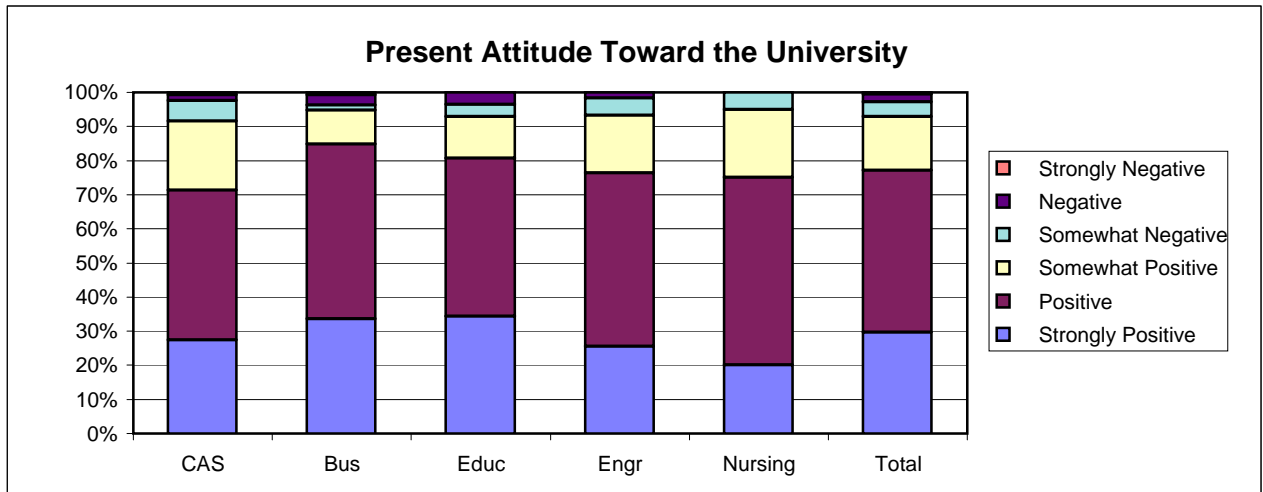


Southern Illinois University Edwardsville
Survey of 2007 Baccalaureate Graduates -- One Year Out
Survey Responses -- Part III
Satisfaction Questions

School Detail	CAS	Bus	Educ	Engr	Nursing	Total
Number of Survey Respondents	247	139	146	60	41	633
13. Present Attitude Towards the University						
Strongly Positive	27.4%	33.6%	34.3%	25.4%	20.0%	29.7%
Positive	43.9%	51.1%	46.4%	50.8%	55.0%	47.4%
Somewhat Positive	20.3%	9.9%	12.1%	16.9%	20.0%	15.8%
Somewhat Negative	5.9%	1.5%	3.6%	5.1%	5.0%	4.3%
Negative	1.7%	3.1%	3.6%	1.7%	0.0%	2.3%
Strongly Negative	0.8%	0.8%	0.0%	0.0%	0.0%	0.5%
Number Responding	237	131	140	59	40	607
14. Present Attitude Towards your Bachelor's Degree Major						
Strongly Positive	27.0%	34.4%	41.4%	42.4%	27.5%	33.4%
Positive	46.8%	48.1%	41.4%	44.1%	57.5%	46.3%
Somewhat Positive	15.6%	12.2%	11.4%	10.2%	10.0%	13.0%
Somewhat Negative	7.2%	3.8%	4.3%	1.7%	5.0%	5.1%
Negative	3.0%	1.5%	1.4%	1.7%	0.0%	2.0%
Strongly Negative	0.4%	0.0%	0.0%	0.0%	0.0%	0.2%
Number Responding	237	131	140	59	40	607

4/15/2009

2007 Baccalaureate Graduates One Year Out Satisfaction



Southern Illinois University Edwardsville
Survey of 2007 Baccalaureate Graduates -- One Year Out
Survey Responses -- Part IV
Educational Practices Questions

School Detail	CAS	Bus	Educ	Engr	Nursing	Total
Number of Survey Respondents	247	139	146	60	41	633
15. Faculty in Major Were Accessible Outside of Class						
Very Often	36.2%	31.6%	48.3%	40.0%	19.5%	37.3%
Often	45.7%	56.6%	44.1%	51.7%	51.2%	48.6%
Sometimes	16.5%	11.0%	6.9%	5.0%	26.8%	12.6%
Infrequently	1.6%	0.7%	0.7%	3.3%	2.4%	1.4%
Never	0.0%	0.0%	0.0%	0.0%	0.0%	0.0%
Number Responding	243	136	145	60	41	625
16. In Major, Student was Expected to Work Cooperatively with Other Students						
Very Often	29.8%	55.5%	58.2%	38.3%	46.3%	43.9%
Often	36.7%	39.4%	34.9%	45.0%	41.5%	38.0%
Sometimes	29.0%	3.6%	6.2%	15.0%	12.2%	15.7%
Infrequently	3.7%	0.7%	0.7%	1.7%	0.0%	1.9%
Never	0.8%	0.7%	0.0%	0.0%	0.0%	0.5%
Number Responding	245	137	146	60	41	629
17. In Major, Faculty Encouraged Student to Challenge Ideas (student's, other students, and in readings & materials)						
Very Often	31.8%	16.1%	35.6%	16.7%	24.4%	27.3%
Often	33.5%	48.2%	44.5%	40.0%	61.0%	41.7%
Sometimes	25.7%	29.2%	15.8%	38.3%	14.6%	24.6%
Infrequently	7.8%	6.6%	3.4%	3.3%	0.0%	5.6%
Never	1.2%	0.0%	0.7%	1.7%	0.0%	0.8%
Number Responding	245	137	146	60	41	629
18. In Major, Faculty Used Appropriate Teaching Activities to Help Student Learn						
Very Often	30.2%	21.9%	39.7%	23.3%	19.5%	29.3%
Often	46.1%	56.2%	45.9%	51.7%	56.1%	49.4%
Sometimes	20.0%	19.7%	13.0%	23.3%	24.4%	18.9%
Infrequently	3.7%	2.2%	1.4%	1.7%	0.0%	2.4%
Never	0.0%	0.0%	0.0%	0.0%	0.0%	0.0%
Number Responding	245	137	146	60	41	629
19. In Major, Faculty had High Expectations for Quality Of Student Work						
Very Often	34.4%	31.6%	46.6%	30.0%	43.9%	36.8%
Often	48.0%	55.1%	41.1%	50.0%	43.9%	47.8%
Sometimes	13.5%	13.2%	10.3%	18.3%	12.2%	13.1%
Infrequently	3.3%	0.0%	2.1%	1.7%	0.0%	1.9%
Never	0.8%	0.0%	0.0%	0.0%	0.0%	0.3%
Number Responding	244	136	146	60	41	627
20. In Major, Faculty Provided Timely Feedback						
Very Often	31.1%	21.2%	38.4%	23.3%	14.6%	28.8%
Often	44.3%	52.6%	52.1%	55.0%	63.4%	50.2%
Sometimes	21.7%	22.6%	9.6%	20.0%	17.1%	18.6%
Infrequently	2.5%	3.6%	0.0%	1.7%	4.9%	2.2%
Never	0.4%	0.0%	0.0%	0.0%	0.0%	0.2%
Number Responding	244	137	146	60	41	628

Southern Illinois University Edwardsville
Survey of 2007 Baccalaureate Graduates -- One Year Out
Survey Responses -- Part IV
Educational Practices Questions

School Detail, cont.	CAS	Bus	Educ	Engr	Nursing	Total
21. In Major, Faculty Encouraged Students' Questions and Discussion in Class						
Very Often	49.6%	41.6%	60.3%	43.3%	31.7%	48.6%
Often	35.7%	43.1%	32.9%	41.7%	46.3%	37.9%
Sometimes	13.9%	13.9%	6.8%	11.7%	22.0%	12.6%
Infrequently	0.8%	1.5%	0.0%	3.3%	0.0%	1.0%
Never	0.0%	0.0%	0.0%	0.0%	0.0%	0.0%
Number Responding	244	137	146	60	41	628
22. In Major, Student Spent Necessary Time and Energy to Come to Class Prepared						
Very Often	47.8%	35.0%	58.9%	33.3%	36.6%	45.5%
Often	42.0%	48.2%	35.6%	51.7%	48.8%	43.2%
Sometimes	8.6%	15.3%	4.1%	13.3%	14.6%	9.9%
Infrequently	1.6%	1.5%	1.4%	1.7%	0.0%	1.4%
Never	0.0%	0.0%	0.0%	0.0%	0.0%	0.0%
Number Responding	245	137	146	60	41	629

4/15/2009

Southern Illinois University Edwardsville
Survey of 2007 Baccalaureate Graduates -- One Year Out
Survey Responses -- Part V
Program Quality Questions

School Detail	CAS	Bus	Educ	Engr	Nursing	Total
Number of Survey Respondents	247	139	146	60	41	633
23A. Quality of Major in Offering						
Sufficient Courses						
Excellent	30.2%	28.5%	41.1%	20.0%	36.6%	31.8%
Good	46.1%	57.7%	48.6%	60.0%	53.7%	51.0%
Fair	18.8%	13.9%	8.9%	15.0%	7.3%	14.3%
Poor	4.9%	0.0%	1.4%	5.0%	2.4%	2.9%
Number Responding	245	137	146	60	41	629
23B. Quality of Major in Offering						
Convenient Class Times						
Excellent	22.5%	19.0%	30.3%	11.7%	26.8%	22.8%
Good	46.7%	52.6%	48.3%	48.3%	46.3%	48.5%
Fair	23.4%	24.1%	15.9%	33.3%	22.0%	22.6%
Poor	7.4%	4.4%	5.5%	6.7%	4.9%	6.1%
Number Responding	244	137	145	60	41	627
23C. Quality of Major in Offering						
Logical Class Sequences						
Excellent	26.1%	26.3%	39.7%	16.7%	31.7%	28.8%
Good	47.8%	53.3%	42.5%	55.0%	46.3%	48.3%
Fair	21.6%	19.0%	15.1%	26.7%	22.0%	20.0%
Poor	4.5%	1.5%	2.7%	1.7%	0.0%	2.9%
Number Responding	245	137	146	60	41	629
24 Quality of Faculty in Major						
Excellent	41.2%	41.9%	63.6%	42.4%	24.4%	45.5%
Good	42.8%	50.7%	30.8%	49.2%	61.0%	43.6%
Fair	13.6%	7.4%	4.9%	6.8%	14.6%	9.6%
Poor	2.5%	0.0%	0.7%	1.7%	0.0%	1.3%
Number Responding	243	136	143	59	41	622
25 Grading Standards in Major Were:						
Too High	2.0%	4.4%	3.4%	1.7%	9.8%	3.3%
About Right	91.0%	89.1%	93.8%	96.7%	90.2%	91.7%
Too Low	7.0%	6.6%	2.7%	1.7%	0.0%	4.9%
Number Responding	244	137	146	60	41	628

4/16/2009

Southern Illinois University Edwardsville
Survey of 2007 Baccalaureate Graduates -- One Year Out
Survey Responses -- Part VI
Educational Effectiveness Questions

School Detail	CAS	Bus	Educ	Engr	Nursing	Total
Number of Survey Respondents	247	139	146	60	41	633
26. Helpfulness of University Experiences in:						
A. Developing Critical Thinking Ability						
Extremely Helpful	17.6%	14.6%	21.2%	24.1%	20.0%	18.5%
Very Helpful	41.2%	49.6%	45.9%	48.3%	47.5%	45.2%
Moderately Helpful	33.9%	31.4%	28.1%	25.9%	22.5%	30.5%
Slightly Helpful	6.9%	2.9%	4.8%	1.7%	10.0%	5.3%
Not Helpful	0.4%	1.5%	0.0%	0.0%	0.0%	0.5%
Number Responding	245	137	146	58	40	626
B. Developing Sense of Ethics						
Extremely Helpful	14.7%	13.1%	19.9%	15.5%	20.0%	16.0%
Very Helpful	31.0%	52.6%	41.8%	36.2%	35.0%	39.0%
Moderately Helpful	36.3%	20.4%	25.3%	34.5%	30.0%	29.7%
Slightly Helpful	13.1%	9.5%	7.5%	8.6%	10.0%	10.4%
Not Helpful	4.9%	4.4%	5.5%	5.2%	5.0%	5.0%
Number Responding	245	137	146	58	40	626
C. Understanding People with Different Backgrounds, Habits, Values, Appearances and Abilities						
Extremely Helpful	24.9%	22.6%	34.2%	14.0%	17.5%	25.1%
Very Helpful	35.5%	39.4%	34.9%	22.8%	50.0%	36.0%
Moderately Helpful	22.9%	31.4%	21.9%	33.3%	25.0%	25.6%
Slightly Helpful	13.5%	5.1%	7.5%	19.3%	7.5%	10.4%
Not Helpful	3.3%	1.5%	1.4%	10.5%	0.0%	2.9%
Number Responding	245	137	146	57	40	625
D. Becoming a More Active Citizen						
Extremely Helpful	11.8%	5.8%	15.1%	8.8%	15.0%	11.2%
Very Helpful	22.9%	21.2%	31.5%	21.1%	27.5%	24.6%
Moderately Helpful	33.9%	42.3%	29.5%	42.1%	32.5%	35.4%
Slightly Helpful	21.2%	19.7%	17.1%	17.5%	22.5%	19.7%
Not Helpful	10.2%	10.9%	6.8%	10.5%	2.5%	9.1%
Number Responding	245	137	146	57	40	625
E. Improving Quality of Life (aside from financial benefits)						
Extremely Helpful	15.1%	9.5%	15.2%	13.8%	12.5%	13.6%
Very Helpful	31.4%	35.8%	43.4%	41.4%	40.0%	36.6%
Moderately Helpful	31.0%	42.3%	29.7%	25.9%	32.5%	32.8%
Slightly Helpful	14.3%	8.8%	9.0%	12.1%	12.5%	11.5%
Not Helpful	8.2%	3.6%	2.8%	6.9%	2.5%	5.4%
Number Responding	245	137	145	58	40	625
F. Developing Reasoning Skills						
Extremely Helpful	17.6%	13.9%	18.5%	31.0%	12.5%	17.9%
Very Helpful	41.6%	50.4%	50.7%	36.2%	45.0%	45.4%
Moderately Helpful	29.8%	29.9%	24.7%	22.4%	32.5%	28.1%
Slightly Helpful	9.8%	5.8%	6.2%	10.3%	10.0%	8.1%
Not Helpful	1.2%	0.0%	0.0%	0.0%	0.0%	0.5%
Number Responding	245	137	146	58	40	626

Southern Illinois University Edwardsville
Survey of 2007 Baccalaureate Graduates -- One Year Out
Survey Responses -- Part VI
Educational Effectiveness Questions

School Detail, cont.	CAS	Bus	Educ	Engr	Nursing	Total
G. Viewing Problems from Different Perspectives						
Extremely Helpful	24.3%	20.4%	30.1%	27.6%	12.5%	24.4%
Very Helpful	39.5%	45.3%	38.4%	44.8%	45.0%	41.3%
Moderately Helpful	26.7%	30.7%	28.1%	24.1%	32.5%	28.0%
Slightly Helpful	7.8%	2.9%	3.4%	1.7%	10.0%	5.3%
Not Helpful	1.6%	0.7%	0.0%	1.7%	0.0%	1.0%
Number Responding	243	137	146	58	40	624
H. Developing Ability to Solve Problems						
Extremely Helpful	20.8%	17.6%	23.3%	36.2%	12.5%	21.6%
Very Helpful	43.3%	51.5%	48.6%	41.4%	42.5%	46.1%
Moderately Helpful	26.9%	26.5%	24.0%	20.7%	32.5%	25.9%
Slightly Helpful	7.8%	2.9%	4.1%	1.7%	12.5%	5.6%
Not Helpful	1.2%	1.5%	0.0%	0.0%	0.0%	0.8%
Number Responding	245	136	146	58	40	625
I. Making Informed Decisions as a Citizen						
Extremely Helpful	18.0%	15.3%	21.9%	8.8%	17.5%	17.5%
Very Helpful	35.2%	44.5%	32.9%	40.4%	22.5%	36.4%
Moderately Helpful	30.3%	29.9%	33.6%	31.6%	40.0%	31.7%
Slightly Helpful	10.7%	8.0%	11.0%	15.8%	17.5%	11.1%
Not Helpful	5.7%	2.2%	0.7%	3.5%	2.5%	3.4%
Number Responding	244	137	146	57	40	624
J. Developing Writing Skills						
Extremely Helpful	27.3%	21.2%	32.9%	12.1%	22.5%	25.6%
Very Helpful	35.5%	49.6%	34.9%	27.6%	42.5%	38.2%
Moderately Helpful	24.1%	19.7%	24.0%	32.8%	20.0%	23.6%
Slightly Helpful	9.0%	8.8%	6.8%	17.2%	12.5%	9.4%
Not Helpful	4.1%	0.7%	1.4%	10.3%	2.5%	3.2%
Number Responding	245	137	146	58	40	626
K. Developing Oral Communication Skills						
Extremely Helpful	24.2%	30.7%	30.6%	17.2%	20.0%	26.2%
Very Helpful	38.1%	44.5%	45.1%	29.3%	50.0%	41.1%
Moderately Helpful	23.4%	16.8%	17.4%	39.7%	15.0%	21.5%
Slightly Helpful	10.7%	6.6%	5.6%	13.8%	15.0%	9.1%
Not Helpful	3.7%	1.5%	1.4%	0.0%	0.0%	2.1%
Number Responding	244	137	144	58	40	623
L. Developing Knowledge of Scientific and Technological Developments						
Extremely Helpful	19.6%	10.2%	18.5%	41.4%	25.0%	19.6%
Very Helpful	26.1%	39.4%	39.0%	41.4%	47.5%	34.8%
Moderately Helpful	34.7%	30.7%	32.9%	15.5%	20.0%	30.7%
Slightly Helpful	15.5%	13.9%	8.2%	1.7%	5.0%	11.5%
Not Helpful	4.1%	5.8%	1.4%	0.0%	2.5%	3.4%
Number Responding	245	137	146	58	40	626

Southern Illinois University Edwardsville
Survey of 2007 Baccalaureate Graduates -- One Year Out
Survey Responses -- Part VI
Educational Effectiveness Questions

School Detail, cont.	CAS	Bus	Educ	Engr	Nursing	Total
27. Undergraduate Education Broadened Interest Beyond Subjects in Major						
Strongly Agree	25.3%	19.4%	26.4%	25.4%	7.5%	23.1%
Agree	48.6%	52.5%	47.9%	49.2%	47.5%	49.3%
Neutral	20.0%	22.3%	18.8%	22.0%	37.5%	21.5%
Disagree	4.9%	4.3%	6.3%	3.4%	7.5%	5.1%
Strongly Disagree	1.2%	1.4%	0.7%	0.0%	0.0%	1.0%
Number Responding	245	139	144	59	40	627
28. Importance of College Education to:						
A. Personal Life						
Very Important	62.7%	60.4%	67.1%	50.8%	62.5%	62.1%
Moderately Important	22.5%	30.9%	26.7%	30.5%	25.0%	26.3%
Slightly Important	9.4%	5.0%	5.5%	10.2%	10.0%	7.6%
Not Important	5.3%	3.6%	0.7%	8.5%	2.5%	4.0%
Number Responding	244	139	146	59	40	628
B. Community Life						
Very Important	29.2%	32.4%	52.1%	25.4%	30.0%	34.9%
Moderately Important	37.9%	37.4%	30.8%	32.2%	50.0%	36.4%
Slightly Important	22.6%	25.2%	10.3%	27.1%	15.0%	20.3%
Not Important	10.3%	5.0%	6.8%	15.3%	5.0%	8.5%
Number Responding	243	139	146	59	40	627
C. Professional Life						
Very Important	64.5%	76.3%	80.8%	79.7%	87.5%	73.8%
Moderately Important	20.8%	17.3%	11.6%	16.9%	10.0%	16.9%
Slightly Important	8.6%	5.8%	4.1%	1.7%	2.5%	5.9%
Not Important	6.1%	0.7%	3.4%	1.7%	0.0%	3.5%
Number Responding	245	139	146	59	40	629
29. Quality of SIUE Education Relative to That of Friends at Other Schools						
Among the Best	15.8%	11.9%	23.3%	18.6%	10.3%	16.6%
Above Average	36.1%	51.9%	39.0%	49.2%	48.7%	42.3%
Average	41.9%	33.3%	34.2%	25.4%	35.9%	36.3%
Below Average	4.6%	3.0%	3.4%	6.8%	5.1%	4.2%
Among the Worst	1.7%	0.0%	0.0%	0.0%	0.0%	0.6%
Number Responding	241	135	146	59	39	620
30. Involvement Since Bachelor's Degree with:						
A. Organized, Formal, Career Related Learning (non-degree)						
Currently Involved	29.8%	37.4%	43.4%	30.5%	47.5%	35.8%
Have Been Involved	29.3%	35.3%	32.4%	54.2%	37.5%	34.2%
Never Involved	40.9%	27.3%	24.1%	15.3%	15.0%	29.9%
Number Responding	242	139	145	59	40	625
B. Personal Enrichment Studies						
Currently Involved	21.4%	15.2%	27.6%	20.3%	28.2%	21.8%
Have Been Involved	36.2%	27.5%	33.8%	44.1%	33.3%	34.3%
Never Involved	42.4%	57.2%	38.6%	35.6%	38.5%	43.9%
Number Responding	243	138	145	59	39	624

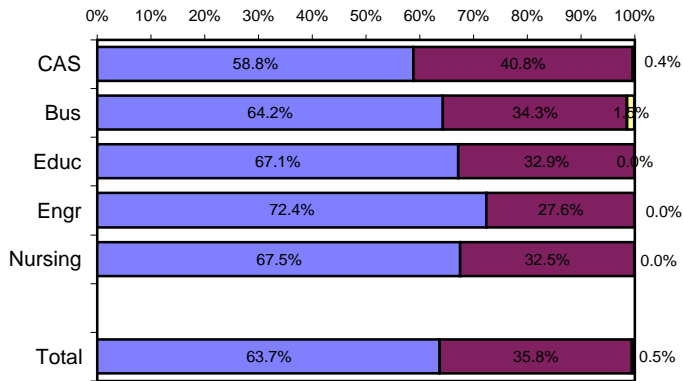
Southern Illinois University Edwardsville
Survey of 2007 Baccalaureate Graduates -- One Year Out
Survey Responses -- Part VI
Educational Effectiveness Questions

School Detail, cont.	CAS	Bus	Educ	Engr	Nursing	Total
C. Professional Activities or Organizations						
Currently Involved	35.0%	36.7%	56.8%	55.9%	57.5%	43.9%
Have Been Involved	35.0%	28.8%	29.5%	27.1%	27.5%	31.1%
Never Involved	30.0%	34.5%	13.7%	16.9%	15.0%	25.0%
Number Responding	243	139	146	59	40	627
D. Volunteer Work / Community Svc Activities or Organizations						
Currently Involved	28.4%	23.0%	38.4%	23.7%	35.0%	29.5%
Have Been Involved	32.9%	33.8%	44.5%	35.6%	45.0%	36.8%
Never Involved	38.7%	43.2%	17.1%	40.7%	20.0%	33.7%
Number Responding	243	139	146	59	40	627
E. Social / Recreational Activities or Organizations						
Currently Involved	38.4%	33.1%	41.8%	40.7%	27.5%	37.5%
Have Been Involved	35.1%	36.7%	41.8%	42.4%	37.5%	37.9%
Never Involved	26.4%	30.2%	16.4%	16.9%	35.0%	24.6%
Number Responding	242	139	146	59	40	626
F. Political Activities or Organizations						
Currently Involved	10.0%	3.6%	15.8%	10.3%	2.5%	9.5%
Have Been Involved	22.4%	10.8%	15.1%	13.8%	20.0%	17.1%
Never Involved	67.6%	85.6%	69.2%	75.9%	77.5%	73.4%
Number Responding	241	139	146	58	40	624
G. Religious / Ethical Activities or Organizations						
Currently Involved	26.6%	25.9%	30.1%	22.4%	30.0%	27.1%
Have Been Involved	25.8%	21.6%	26.7%	13.8%	40.0%	24.9%
Never Involved	47.5%	52.5%	43.2%	63.8%	30.0%	48.0%
Number Responding	244	139	146	58	40	627
H. Support or Participation in the Arts (music, drama, dance, art)						
Currently Involved	25.6%	8.6%	17.1%	10.3%	2.5%	17.0%
Have Been Involved	32.6%	23.7%	34.2%	24.1%	32.5%	30.2%
Never Involved	41.7%	67.6%	48.6%	65.5%	65.0%	52.8%
Number Responding	242	139	146	58	40	625
I. Reading books not directly related to your job						
Currently Involved	63.9%	48.2%	73.3%	39.0%	55.0%	59.7%
Have Been Involved	23.4%	28.8%	20.5%	37.3%	37.5%	26.1%
Never Involved	12.7%	23.0%	6.2%	23.7%	7.5%	14.2%
Number Responding	244	139	146	59	40	628

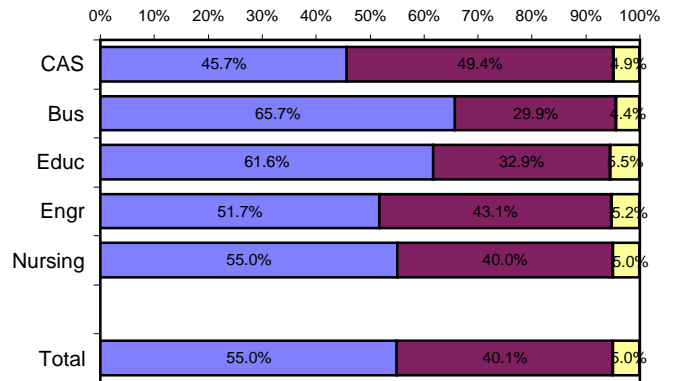
Helpfulness of University Experiences in:

■ Very to Extremely Helpful
 ■ Slightly to Moderately Helpful
 ■ Not Helpful

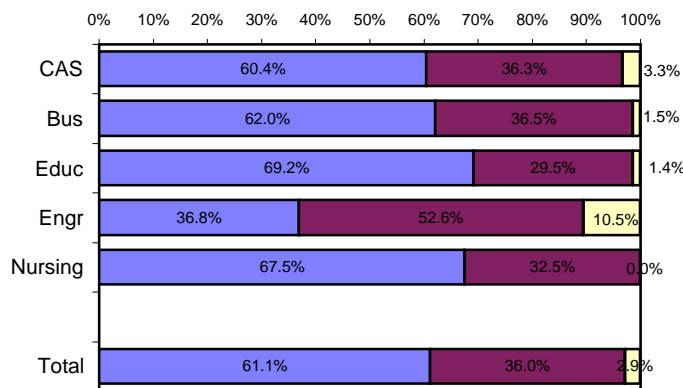
Developing Critical Thinking Ability



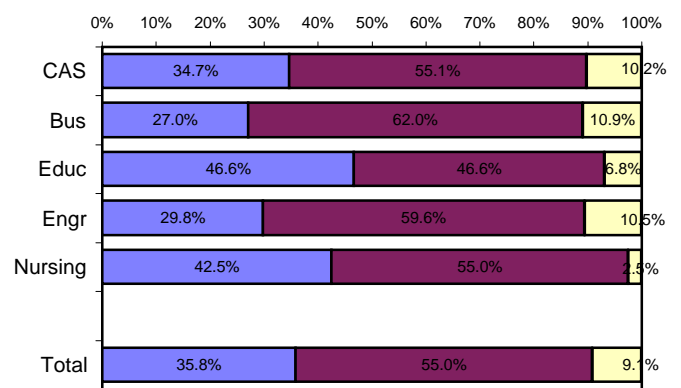
Developing Sense of Ethics



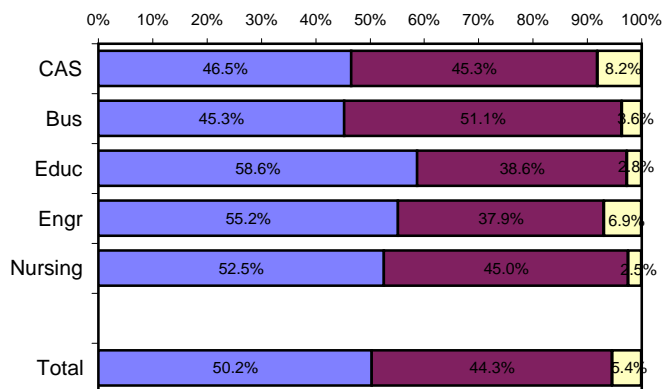
Understanding People with Different Backgrounds



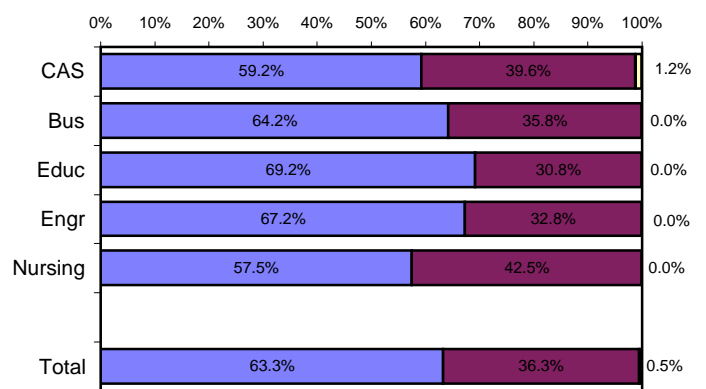
Becoming a More Active Citizen



Improving Quality of Life (aside from financial benefits)



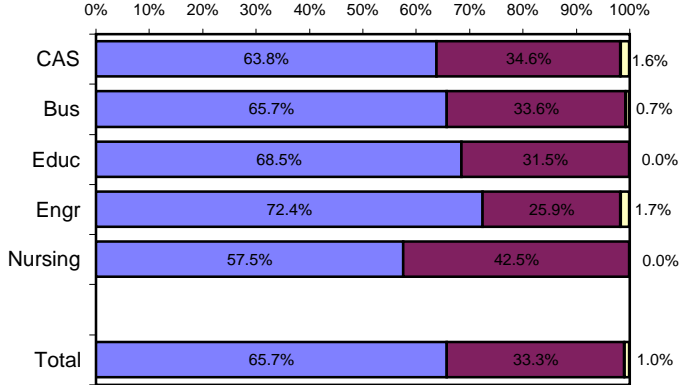
Developing Reasoning Skills



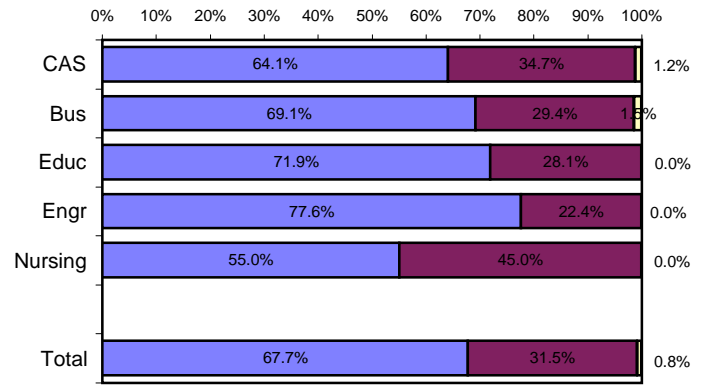
Helpfulness of University Experiences in:

■ Very to Extremely Helpful
 ■ Slightly to Moderately Helpful
 ■ Not Helpful

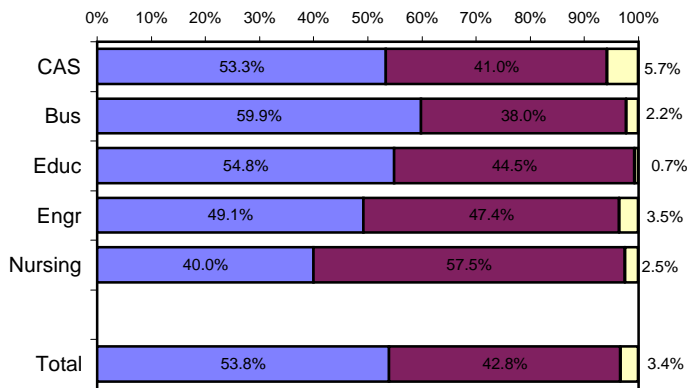
Viewing Problems from Different Perspectives



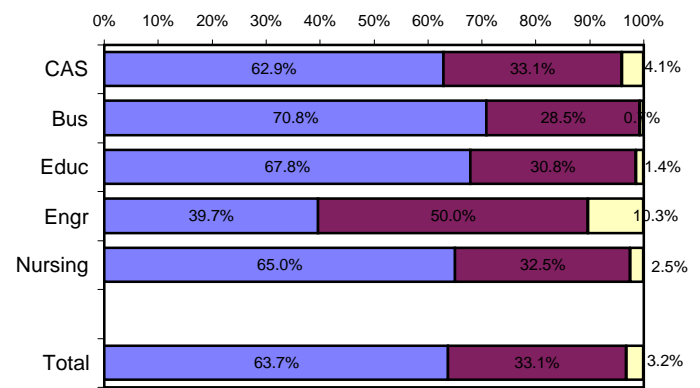
Developing Ability to Solve Problems



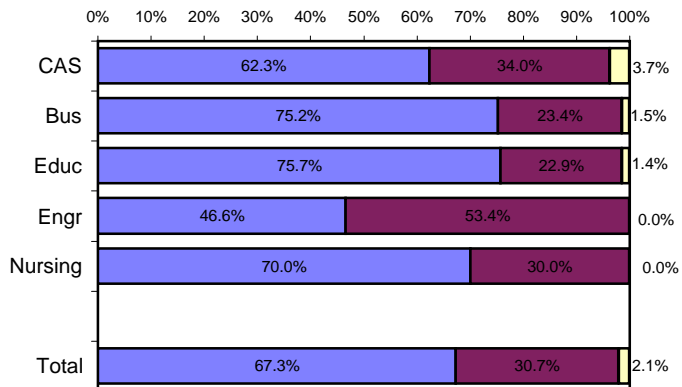
Making Informed Decisions as a Citizen



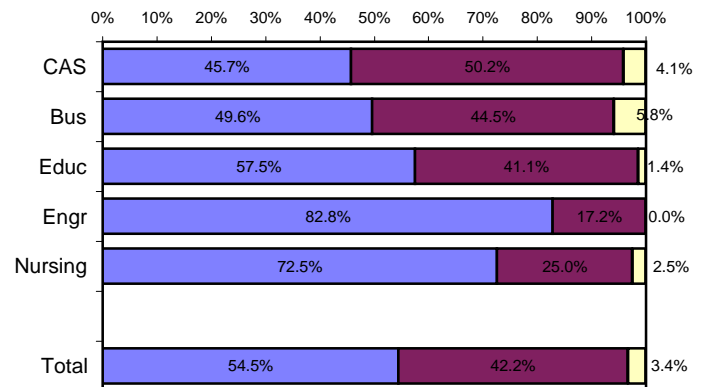
Developing Writing Skills



Developing Oral Communication Skills



Developing Knowledge of Scientific and Technological Developments



Appendix A

Sample Questionnaire

SOUTHERN ILLINOIS UNIVERSITY EDWARDSVILLE

SURVEY OF 2007 BACCALAUREATE GRADUATES ONE YEAR AFTER GRADUATION

Most of the questions in this survey can be answered simply by circling the appropriate number. We hope you will give us your help and valuable input so that we can design programs that better serve the needs of SIUE students. PLEASE ANSWER THESE QUESTIONS ONLY IN REGARD TO THE SIUE UNDERGRADUATE DEGREE YOU RECEIVED LAST YEAR. Your individual responses to this questionnaire will be kept completely confidential. Thank you for your cooperation. Please return this survey in the envelope provided.

I. Employment

1. Are you currently employed (including self-employed)?

- 1 Yes, full-time 3 No, but am seeking employment
2 Yes, part-time 4 No, and am not seeking employment

If you are NOT employed (responses 3 and 4), skip to *Section II*.

2. What is the Zip Code of your place of employment (e.g., your actual workplace, not corporate headquarters)? _____

3. How would you classify your primary employer?

- | | |
|--|--|
| 1 Self-employed or private practice | 6 Health agency (e.g., hospital, clinic) |
| 2 Business (industrial, commercial or service) | 7 Federal, state, or local government |
| 3 Professional firm (e.g., engineering, law) | 8 Armed services |
| 4 College or university | 9 Non-profit (non-government) |
| 5 Elementary/secondary school (including cooperatives) | 10 Other (please specify) _____ |

4. How satisfied are you with your current job?

- 1 Very Satisfied 2 Satisfied 3 Somewhat Satisfied 4 Somewhat Dissatisfied 5 Dissatisfied 6 Very Dissatisfied

5. How closely related is your current job to your bachelor's degree major?

- 1 Closely Related 2 Related 3 Unrelated

If you marked "3" (unrelated), is this by choice?

- 1 Yes 2 No

6. When did you secure your first job following receipt of your bachelor's degree?

- 1 Held the same job while enrolled
2 Secured job by time of graduation
3 Secured job after graduation

If you marked "3," how many months after graduation did you secure employment?

- 1 Less than 1 month 3 Between 3 and 6 months 5 More than 9 months
2 Between 1 and 3 months 4 Between 6 and 9 months

7. What is your annual earned income before taxes in your current job? _____

8. In general, how well did your bachelor's degree prepare you for your present job?

- 1 Very Well 2 Well 3 Adequately 4 Inadequately 5 Poorly 6 Very poorly

9. Please circle on the lists below both your **primary occupation**¹ (what you do) and the **industry** in which you are employed (where you do it). Although some occupations typically work within one industry, they may be employed in other industries also. An example would be a school nurse — Health: Registered Nurses (11) in Educational Services (15). Examples of the types of occupations contained in each category are provided in italics.

Please write in your actual job title _____ (optional)

Circle One

Occupational Categories

- 01 **Management** (such as Executives, Financial Managers, Human Resources Managers, Sales & Agricultural Managers, Educational Administrators, Health Administrators)
- 02 **Business Operations** (such as Buyers & Purchasing Agents; Insurance Claims Adjusters/Examiners; Human Resources, Training, & Labor Relations Specialists; Management Analysts)
- 03 **Financial Specialists** (such as Accountants, Assessors, Appraisers, Financial & Credit Analysts, Underwriters, Loan Counselors/Officers)
- 04 **Computer Specialists** (such as Computer & Information Scientists, Programmers, Software Specialists, Database & Network Administrators and System Analysts)
- 05 **Mathematical Scientists and Technicians** (such as Mathematicians, Statisticians, Actuaries, & Mathematical Technicians)
- 06 **Architects, Surveyors, and Cartographers**
- 07 **Engineers and Related Technicians** (such as Agricultural, Civil, Computer Hardware, Electrical, Industrial, Mechanical, Materials & Construction Engineers and Technicians)
- 08 **Life and Physical Scientists and Technicians** (such as Agricultural & Food Scientists, Biologists, Medical Scientists, Chemists, Physicists, Atmospheric & Environmental Scientists, and Related Technicians)
- 09 **Social Scientists** (such as Economists, Psychologists, Market & Survey Researchers, Geographers, Historians, Sociologists, Anthropologists, Political Scientists & Urban Planners)
- 10 **Health: Doctors** (such as Physicians & Surgeons, Dentists, Veterinarians, Optometrists, Podiatrists, and Chiropractors)
- 11 **Health: Registered Nurses**
- 12 **Health: Therapists** (such as Occupational, Physical, Recreational, & Speech Therapists)
- 13 **Health: Other Health Practitioners, Professionals, and Support Workers** (such as Pharmacists, Dieticians, Physician Assistants, and all other Technicians/Assistants/Aides)
- 14 **Community and Social Service** (such as Counselors, Social Workers, Community & Religious Workers, Probation Officers.)
- 15 **Legal: Attorneys/Judges**
- 16 **Legal: Legal Support Workers** (such as Inspectors & Examiners, Legal Assistants, Safety & Health Inspectors)
- 17 **Education: Early Childhood Teachers** (such as Day Care, Pre-School, and Kindergarten Teachers)
- 18 **Education: Elementary School Teachers**
- 19 **Education: Middle School Teachers**
- 20 **Education: Secondary School Teachers**
- 21 **Education: Special Education Teachers**
- 22 **Education: Other, except Administrators (see #1)** (such as Postsecondary Teachers, Vocational Teachers, Teaching & Research Assistants, School Counselors, Other Teachers, Training Specialists, Aides & Assistants)
- 23 **Library Occupations** (such as Librarians, Archivists, Curators, and Library Technicians)
- 24 **Arts and Design Workers** (such as Designers and Fine & Craft Artists)
- 25 **Entertainment, Performers, Sports and Related Workers** (such as Musicians, Singers, Dancers, Actors, Producers, Directors, Composers, Athletes, Coaches, & Referees)
- 26 **Media and Communication Workers** (such as Writers & Editors, Announcers, News Analysts & Reporters, Public Relation Specialists, and Media & Communication Equipment Workers)
- 27 **Sales** (such as Real Estate, Retail, Insurance, & Securities Sales Agents; Wholesale & Manufacturing Sales Representatives; Telemarketers)
- 28 **Office and Administration** (such as Clerical & Support Personnel, Clerks, Claims Examiners, Tellers, Scheduling & Distribution Agents)
- 29 **Protective Services** (such as Fire Fighters, Correctional Officers, Police, Life Guards, Security Guards, Investigators)
- 30 **Food Preparation and Serving** (such as Cooks, Bartenders, Food Service Workers & Servers)
- 31 **Buildings and Grounds Maintenance** (such as Janitors, Cleaners, Landscaping & Groundskeeping Laborers)
- 32 **Personal Care and Services** (such as Flight Attendants, Child Care Workers, Hairstylists & Personal Care Workers, Hotel & Travel Industry Workers)
- 33 **Farming, Fishing, and Forestry** (such as Farm Workers, Animal Care Workers, Foresters, Loggers)
- 34 **Construction and Extractive** (such as Carpenters; Electricians; Painters; Construction, Oil & Mining Wrks; Plumbers)
- 35 **Installation, Maintenance, and Repair** (such as Telecommunications Workers; Automotive Repairers; Heating, Air Conditioning & Refrigeration Mechanics & Installers)
- 36 **Production** (such as Electrical & Electronic Equipment Assemblers; Food, Metal, Plastics, Printing, & Photography Industry Technicians & Workers)
- 37 **Transportation and Material Moving** (such as Pilots, Drivers, Air Traffic Controllers)
- 38 **Military** (Officers & Enlisted Personnel)

Circle One

Industrial Categories

- | | | |
|---------------------------------------|--|--|
| 01 Agriculture, Forestry, and Fishing | 09 Information | 15 Management & Remediation Svcs |
| 02 Mining | 10 Finance and Insurance | 16 Educational Services |
| 03 Utilities | 11 Real Estate and Rental and Leasing | 17 Health Care and Social Assistance |
| 04 Construction | 12 Professional, Scientific and Technical Services | 18 Arts, Entertainment and Recreation |
| 05 Manufacturing | 13 Management of Companies and Enterprises | 19 Accommodations and Food Services |
| 06 Wholesale Trade | 14 Administrative and Support, Waste | 20 Other Services (except Public Administration) |
| 07 Retail Trade | | |
| 08 Transportation | | |

¹For some occupations, such as doctors, the occupation is not appropriate for students one year after earning a baccalaureate degree. This complete listing is also used for surveys of alumni five-years and nine-years after graduation.

II. Education

10. Have you enrolled in a college or university since earning your bachelor's degree?

- 1 Yes, full-time 2 Yes, part-time 3 No

If you have NOT enrolled in a college or university (response "3"), skip to *Section III*.

11. Are you pursuing (or have you completed) an additional degree since earning your bachelor's?

- 1 Yes 2 No (If your answer is "no," skip to *Section III*.)

If you are pursuing (or have completed) another degree, please indicate which degree below:

- | | |
|---|---|
| 01 Associate's | 06 Health Professional (dentistry, pharmacy, podiatry, optometry, etc.) |
| 02 Second Bachelor's | 07 Theology/Divinity |
| 03 Academic Master's (MA, MS, MEd, etc.) | 08 Law (LLB, JD) |
| 04 Professional Master's (MBA, MSW, MFA, MPA, etc.) or Education Specialist | 09 Doctorate (PhD, EdD, DA, DBA, etc.) |
| 05 Medicine (MD, DO) | 10 Other, please specify: _____ |

12. In general, how well did your bachelor's degree prepare you for your additional degree program?

- 1 Very well 2 Well 3 Adequately 4 Inadequately 5 Poorly 6 Very poorly

III. Satisfaction

13. What is your present attitude towards the University?

- 1 Strongly Positive 2 Positive 3 Somewhat Positive 4 Somewhat Negative 5 Negative 6 Strongly Negative

14. What is your present attitude towards your bachelor's degree major?

- 1 Strongly Positive 2 Positive 3 Somewhat Positive 4 Somewhat Negative 5 Negative 6 Strongly Negative

IV. Educational Practices: *The questions below will provide feedback to help the University improve undergraduate education. Please respond to each question by evaluating your program as a whole.*

In my major degree program, --	Very Often	Often	Sometimes	Infrequently	Never
15. professors were accessible outside of class.	1	2	3	4	5
16. I was expected or required to work cooperatively with other students on projects, homework, and assignments.	1	2	3	4	5
17. professors encouraged me to challenge my own ideas, the ideas of other students, and those presented in readings and other course materials.	1	2	3	4	5
18. professors used appropriate teaching activities to help me learn.	1	2	3	4	5
19. professors' expectations for the quality of student work was high.	1	2	3	4	5
20. professors provided me with timely feedback on my performance.	1	2	3	4	5
21. professors encouraged students' questions and discussion in class.	1	2	3	4	5
22. I spent the necessary time and energy to come to class prepared.	1	2	3	4	5

V. Program Quality

23. How would you rate the quality of your major degree program concerning the:

	Excellent	Good	Fair	Poor
A. Number of courses offered in your major for you to complete your program in a reasonable amount of time.	1	2	3	4
B. Classes being offered at convenient times.	1	2	3	4
C. Classes being offered in a logical sequence.	1	2	3	4

24. How would you rate the quality of the faculty in your major degree program:

- 1 2 3 4

25. Were the academic standards in grading students by faculty in your degree program:

- 1 Too High 2 About Right 3 Too Low

VI. Educational Effectiveness

26. Listed below are some abilities often mentioned as important for personal and professional success in the 21st century. In your view, how effective were your University experiences in —

	Extremely Helpful	Very Helpful	Moderately Helpful	Slightly Helpful	Not Helpful
A. helping you to better develop your critical thinking ability?	1	2	3	4	5
B. helping you to better develop your sense of ethics?	1	2	3	4	5
C. contributing to a greater understanding of people with different backgrounds, habits, values, appearances, and abilities?	1	2	3	4	5
D. helping you to become a more active citizen?	1	2	3	4	5
E. improving the quality of your life aside from financial benefits?	1	2	3	4	5
F. helping you to better develop your reasoning skills?	1	2	3	4	5
G. helping you to better develop your capacity to view problems from different perspectives?	1	2	3	4	5
H. helping you to better develop your ability to solve problems?	1	2	3	4	5
I. helping you to better develop your ability to make informed decisions as a citizen?	1	2	3	4	5
J. helping you to better develop your writing skills?	1	2	3	4	5
K. helping you to better develop your oral communication skills?	1	2	3	4	5
L. helping you to better develop your knowledge of scientific and technological developments?	1	2	3	4	5

27. My SIUE undergraduate education broadened my interest in issues beyond the subjects in my major.

1 Strongly Agree 2 Agree 3 Neutral 4 Disagree 5 Strongly Disagree

28. How important has your college education been to your —

	Very Important	Moderately Important	Slightly Important	Not Important
A. Personal Life	1	2	3	4
B. Community Life	1	2	3	4
C. Professional Life	1	2	3	4

29. How would you rate the quality of education that you received from SIUE relative to the education that your friends and colleagues have received from other colleges or universities?

1 Among the Best 2 Above Average 3 Average 4 Below Average 5 Among the worst

30. Please indicate your involvement with each of the following since completing your bachelor's degree:

	Currently Involved	Have Been Involved	Never Involved
A. Organized, formal learning that is career-related (non-degree)	1	2	3
B. Personal enrichment studies	1	2	3
C. Professional activities or organizations	1	2	3
D. Volunteer work / community service activities or organizations	1	2	3
E. Social/recreational activities or organizations	1	2	3
F. Political activities or organizations	1	2	3
G. Religious/ethical activities or organizations	1	2	3
H. Support or participation in the Arts (<i>music, drama, dance, art</i>)	1	2	3
I. Reading books not directly related to your job	1	2	3