

Southern Illinois University at Edwardsville
Survey of 2009 Baccalaureate Graduates -- One Year Out

Survey Results for Schools

April 2011

Survey Administered By
The Office of Undergraduate Assessment and Program Review

Survey Results Compiled By
The Office of Institutional Research and Studies

Southern Illinois University at Edwardsville

Survey of 2009 Baccalaureate Graduates -- One Year Out

Contents

Introduction

Methodology

Survey Population and Respondents

- Charts: *2009 Baccalaureate Recipients, Profile*
- \$ *Gender*
 - \$ *Race/Ethnic*
 - \$ *Age at Graduation*
 - \$ *Matriculation Status*
 - \$ *Time to Degree for New Freshmen*
 - \$ *Time to Degree for New Transfers*

- Table: *Comparison of All Graduates to Survey Respondents*

Survey Results

- Charts: *2009 Baccalaureate Graduates One Year Out, Satisfaction*
- \$ *Present Attitude Toward the University*
 - \$ *Present Attitude Towards Alumni=s Bachelor=s Degree Major*
 - \$ *Quality of SIUE Education Relative to That of Friends at Other Schools*

- 2009 Baccalaureate Graduates One Year Out, Additional Education*
- \$ *Enrolled Since Bachelors Degree*
 - \$ *How Well Bachelor=s Degree Prepared Alumni for Additional Degree*

- 2009 Baccalaureate Graduates One Year Out, Employment*
- \$ *Employment Status*
 - \$ *Place of Employment*
 - \$ *Job in Field Related to Major?*
 - \$ *Job Satisfaction*
 - \$ *How Well Bachelor=s Degree Program Prepared Alumni for Present Job*
 - \$ *Mean Salary of Alumni Employed Full Time*

- Helpfulness of University Experiences in:*
- \$ *Developing Critical Thinking Ability*
 - \$ *Developing Sense of Ethics*
 - \$ *Understanding People with Different Backgrounds*
 - \$ *Becoming a more Active Citizen*
 - \$ *Improving Quality of Life (aside from financial benefits)*
 - \$ *Developing Reasoning Skills*
 - \$ *Viewing Problems from Different Perspectives*
 - \$ *Developing Ability to Solve Problems*
 - \$ *Making Informed Decisions as a Citizen*

- \$ *Developing Writing Skills*
- \$ *Developing Oral Communication Skills*
- \$ *Developing Knowledge of Scientific and Technological Developments*

Tables:

<i>Part I</i>	<i>Employment Questions</i>
<i>Part II</i>	<i>Education Questions</i>
<i>Part III</i>	<i>Satisfaction Questions</i>
<i>Part IV</i>	<i>Educational Practices Questions</i>
<i>Part V</i>	<i>Program Quality Questions</i>
<i>Part VI</i>	<i>Educational Effectiveness Questions</i>

Questionnaire

Southern Illinois University Edwardsville Survey of 2009 Baccalaureate Graduates -- One Year Out

Introduction

This one-year out baccalaureate survey was done to provide data for the University's undergraduate program reviews and other planning uses, and to participate in the Illinois Board of Higher Education Baccalaureate Graduates= Follow-up System.

IBHE Survey Schedule and Population Definition		
Survey Year	Survey Type	Survey Group
1992	One-Year Out Survey	Class of >91
1993	Five-Year Out Survey	Class of >88
1994	Ten-Year Out Survey	Class of >84
1995	One-Year Out Survey	Class of >94
1996	Five-Year Out Survey	Class of >91
1997	Nine-Year Out Survey	Class of >88
1998	One-Year Out Survey	Class of >97
1999	Five-Year Out Survey	Class of >94
2000	Nine-Year Out Survey	Class of >91
2001	One-Year Out Survey	Class of >00
2002	Five-Year Out Survey	Class of >97
2003	Nine-Year Out Survey	Class of >94
2004	One-Year Out Survey	Class of '03
2005	Five-Year Out Survey	Class of '00
2006	Nine-Year Out Survey	Class of '97
2007	One-Year Out Survey	Class of '06
2008	Five-Year Out Survey	Class of '03
2009	Nine-Year Out Survey	Class of '00
2010	One-Year Out Survey	Class of 09

After the first six years, the surveys were reviewed and changed, modifying some questions and value scales, and adding some additional questions.

The current survey was administered during the spring and summer of 2010 to calendar year 2009 baccalaureate graduates of SIUE. The questionnaire includes 18 questions common to all Illinois public universities. These are the first 18 questions in the survey, forming Parts I, II, III, and the beginning of Part IV (Employment Questions, Education Questions, Satisfaction Questions, and Educational Practices Questions). SIUE added to these one question on industry of employment and three additional questions on educational practices, and appended two additional parts to the survey to add questions about program quality, and educational effectiveness. (A questionnaire is included in Appendix A.)

Methodology

The survey questionnaire and a cover letter were adapted from the questionnaire and letter developed for previous surveys. SIUE Alumni Services provided current addresses for calendar year 2009 graduates as determined from institutional records. The survey was distributed in May 2010 to May 2009 baccalaureate graduates and in August 2010 to August 2009 and December 2009 baccalaureate graduates. Each envelope included a cover letter, a questionnaire, and a postage-paid, pre-addressed return envelope. Each questionnaire was stamped with a sequential, identifying number which was also stamped on a listing of the graduates (this aided in identifying the surveys when returned).

On April 26, 2010 approximately two weeks before the first set of surveys were to be mailed, a postcard was sent to the 1,233 May 2009 baccalaureate graduates, for whom addresses were available, notifying the alumni that they would be receiving a questionnaire and encouraging them to complete and return the survey. Surveys were mailed first class on May 10, 2010. On June 1, approximately three weeks after the survey was mailed and when the rate of survey returns had decreased, a follow-up postcard requesting that the survey be returned was mailed to each student who had not returned his or her survey. On June 16 a second wave mailing of the surveys was sent to the 943 remaining non-respondents.

The second distribution began with the preliminary postcard mailed on August 9, 2010 to the 862 August and December 2009 baccalaureate graduates with known addresses. Surveys were mailed first class to this group on August 24, 2010 with a follow-up post card mailed to non-responders on September 13, 2010. A second wave mailing of the survey was sent to 665 non-responders on September 27, 2010.

Returned surveys began arriving on May 14th and continued through the summer and fall, with a few arriving as late as April 2011. As the surveys came in, each was matched with the corresponding stamped listing. The students' names were then checked against the alphabetic list of alumni to verify (or, if the alumnus chose not to provide the identification number, to obtain) the student identification number. The student identification number was the key which allowed merging of survey data with administrative records (e.g., biographic, graduation, matriculation, and enrollment information).

Southern Illinois University Edwardsville
Survey of 2009 Baccalaureate Graduates -- One Year Out

Survey Population and Respondents

	Number of Graduates
2009 Baccalaureate Degrees	2,151
Less persons who received 2 baccalaureate degrees	42
2009 Baccalaureate Graduates	2,109
Less Graduates with No Address Available *	56
Graduates Surveyed	2,053
Less Non-Deliverable Surveys	199
Less Non-Responding Graduates	1,208
Survey Respondents	646
Gross Response Rate (Respondents/Total Surveyed)	31.47%
Adjusted Response Rate (Respondents/Delivered Surveys)	34.84%

* Includes deceased alumni, foreign addresses and known bad addresses.

Southern Illinois University Edwardsville
Survey of 2009 Baccalaureate Graduates -- One Year Out

Comparison of All Graduates to Survey Respondents

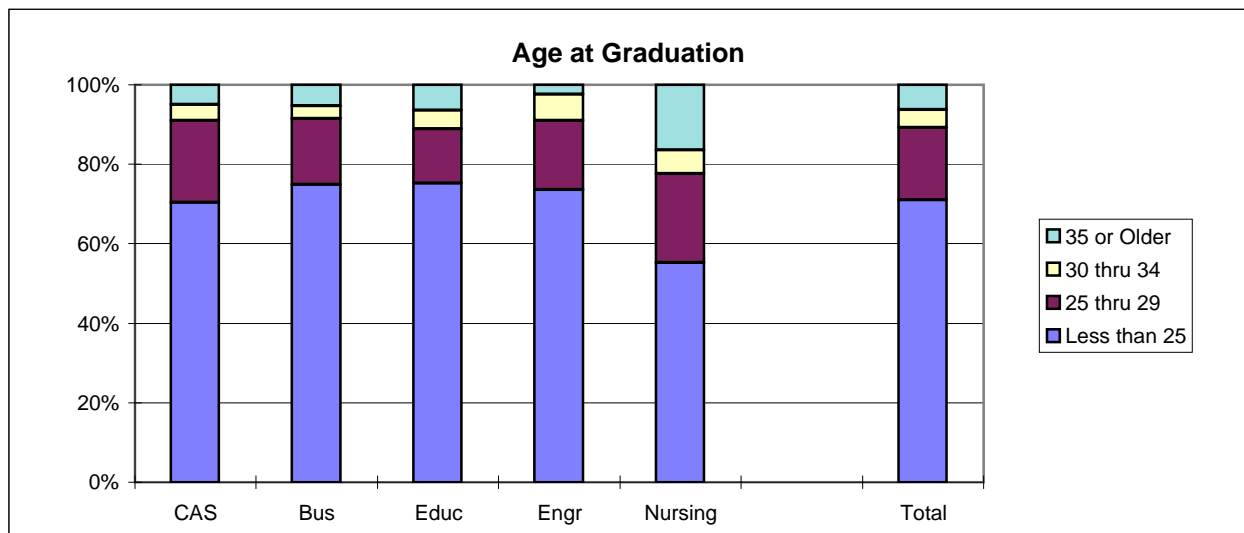
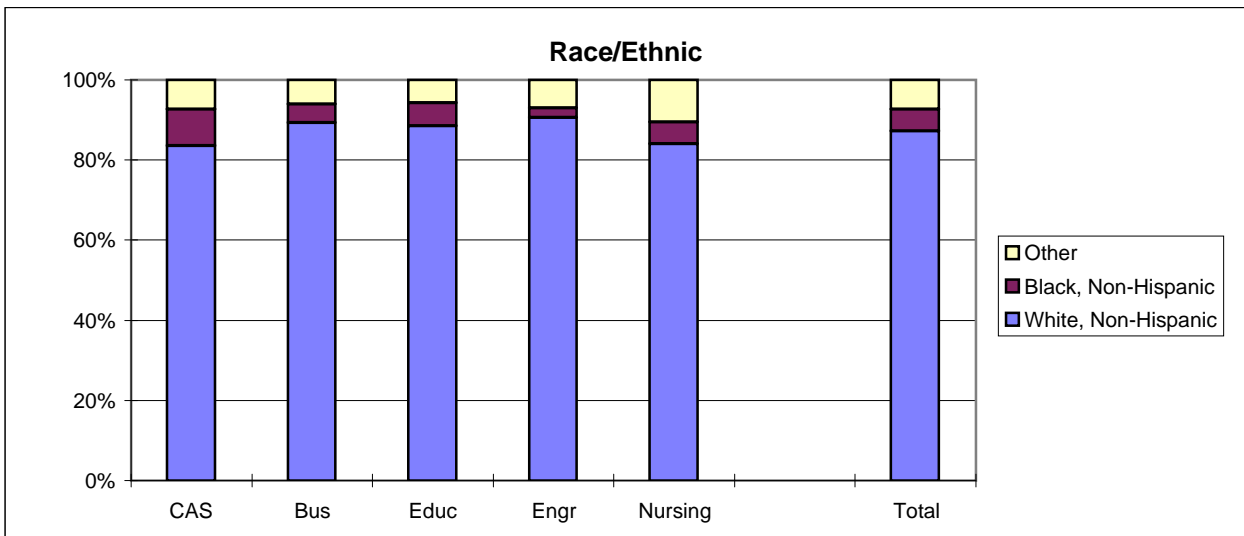
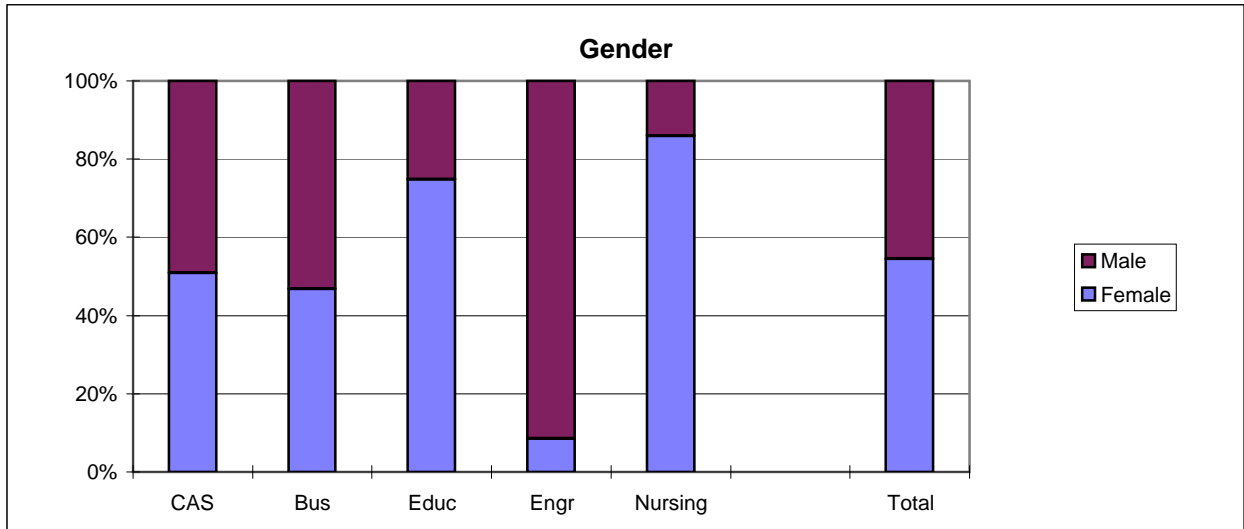
School Detail	All Graduates					
	CAS	Bus	Educ	Engr	Nursing	Total
Total	855	414	420	201	219	2109
Female	50.9%	46.9%	74.8%	8.5%	85.8%	54.4%
Male	49.1%	53.1%	25.2%	91.5%	14.2%	45.6%
Missing Data	0.0%	0.0%	0.0%	0.0%	0.0%	0.0%
White, Non-Hispanic	83.6%	89.4%	88.6%	90.5%	84.0%	86.4%
Black, Non-Hispanic	9.0%	4.6%	5.7%	2.5%	5.5%	6.5%
Asian/Pacific Islander	2.5%	1.2%	1.4%	2.0%	4.1%	2.1%
American Indian/Alaskan Native	0.1%	0.5%	0.0%	0.5%	0.0%	0.2%
Hispanic	2.3%	1.7%	2.1%	1.0%	1.8%	2.0%
Non-Resident Alien	0.5%	1.4%	0.0%	1.5%	1.4%	0.8%
Missing Data	2.0%	1.2%	2.1%	2.0%	3.2%	2.0%
Age at Graduation	range	range	range	range	range	range
	median	median	median	median	median	median
	19 to 59	20 to 54	20 to 63	20 to 53	21 to 58	19 to 63
	23.0	23.0	23	23	24	23.0
Bachelor of Science	65.3%	79.5%	92.1%	99.0%	100.0%	80.2%
Bachelor of Music	2.8%	0.0%	0.0%	0.0%	0.0%	1.1%
Bachelor of Arts	27.6%	0.0%	7.9%	1.0%	0.0%	12.8%
Bachelor of Fine Arts	2.8%	0.0%	0.0%	0.0%	0.0%	1.1%
Bachelor of Sci in Accountancy	0.0%	20.5%	0.0%	0.0%	0.0%	4.0%
Bachelor of Liberal Studies	1.5%	0.0%	0.0%	0.0%	0.0%	0.6%
Bachelor of Social Work	0.0%	0.0%	0.0%	0.0%	0.0%	0.0%
Missing Data	0.0%	0.0%	0.0%	0.0%	0.0%	0.0%
Graduated Spring 2009	53.1%	49.8%	71.7%	54.2%	77.2%	58.7%
Graduated Summer 2009	18.7%	15.0%	8.8%	11.9%	0.9%	13.5%
Graduated Fall 2009	28.2%	35.3%	19.5%	33.8%	21.9%	27.7%
Missing Data	0.0%	0.0%	0.0%	0.0%	0.0%	0.0%
Matriculated as a New Freshman	48.5%	53.6%	48.3%	51.2%	39.3%	48.8%
Matriculated as a Transfer	50.8%	46.1%	51.2%	46.8%	58.4%	50.4%
Matriculated as a Non-Degree Student	0.7%	0.2%	0.5%	2.0%	2.3%	0.9%
Missing Data	0.0%	0.0%	0.0%	0.0%	0.0%	0.0%
Time to Degree for New Freshmen						
3 Years or Fewer	6.3%	14.0%	6.9%	3.9%	1.2%	7.4%
4 Years	48.7%	51.4%	63.1%	53.4%	58.1%	53.4%
5 Years	25.3%	15.8%	18.2%	26.2%	16.3%	21.2%
6 Years	7.0%	7.7%	4.9%	5.8%	12.8%	7.1%
7 Years	5.3%	3.2%	0.5%	4.9%	3.5%	3.7%
8 Years	1.7%	0.9%	1.0%	1.0%	4.7%	1.6%
9 Years	2.2%	1.8%	1.0%	1.0%	1.2%	1.7%
10 Years	0.2%	0.9%	1.0%	1.9%	0.0%	0.7%
11 Years or More	3.4%	4.5%	3.4%	1.9%	2.3%	3.4%
Missing Data	0.0%	0.0%	0.0%	0.0%	0.0%	0.0%
Time to Degree for Transfers						
2 or Fewer Years	28.1%	37.7%	37.2%	23.4%	44.5%	33.2%
3 Years	32.9%	33.5%	38.6%	38.3%	28.9%	34.2%
4 Years	19.1%	12.0%	11.6%	23.4%	13.3%	16.0%
5 Years	10.4%	5.8%	1.9%	4.3%	4.7%	6.6%
6 Years	3.0%	3.1%	3.3%	3.2%	1.6%	2.9%
7 Years	1.4%	1.6%	1.9%	4.3%	0.0%	1.6%
8 Years	0.7%	1.6%	1.4%	1.1%	0.8%	1.0%
9 Years	1.4%	0.0%	0.5%	0.0%	0.8%	0.8%
10 Years or More	3.0%	4.7%	3.7%	2.1%	5.5%	3.7%
Missing Data	0.0%	0.0%	0.0%	0.0%	0.0%	0.0%
Graduating GPA (4 point scale)	Mean	Mean	Mean	Mean	Mean	Mean
	Std Dev	Std Dev	Std Dev	Std Dev	Std Dev	Std Dev
	3.128	3.118	3.416	3.042	3.445	3.208
	0.467	0.410	0.410	0.436	0.340	0.454

Southern Illinois University Edwardsville
Survey of 2009 Baccalaureate Graduates -- One Year Out

Comparison of All Graduates to Survey Respondents, cont.

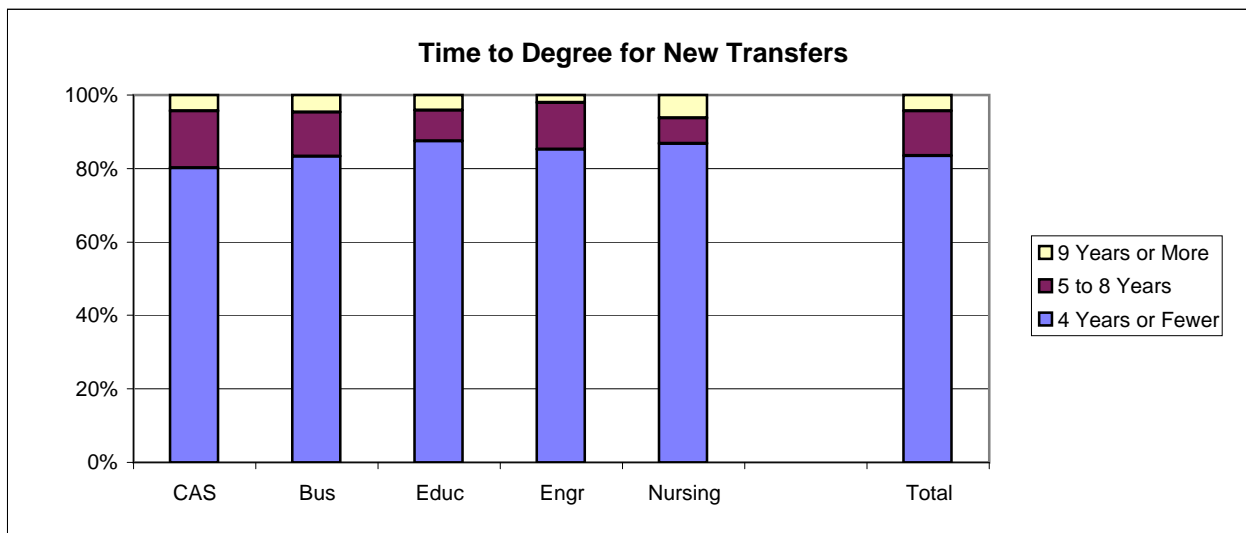
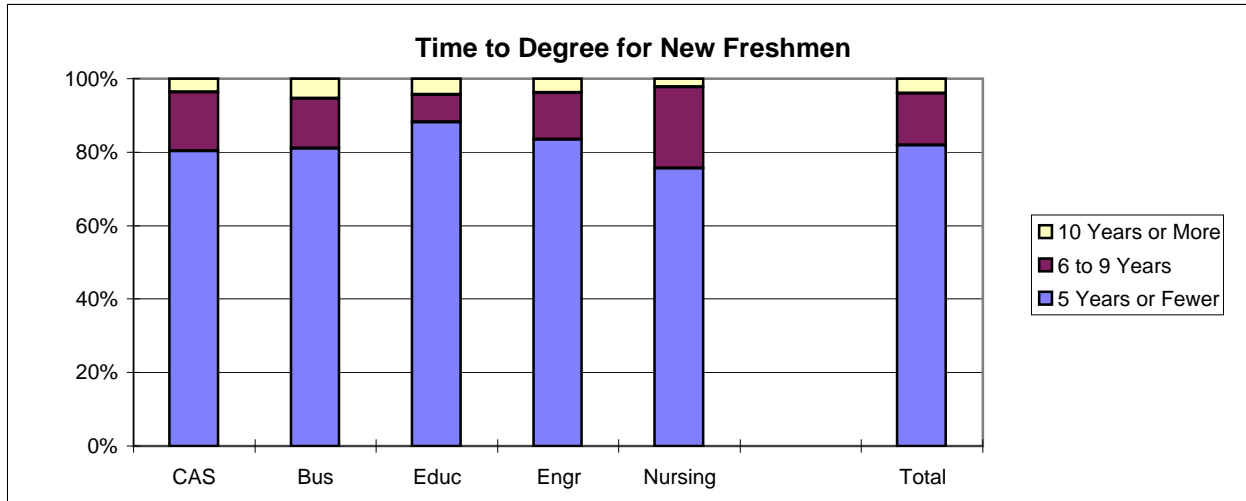
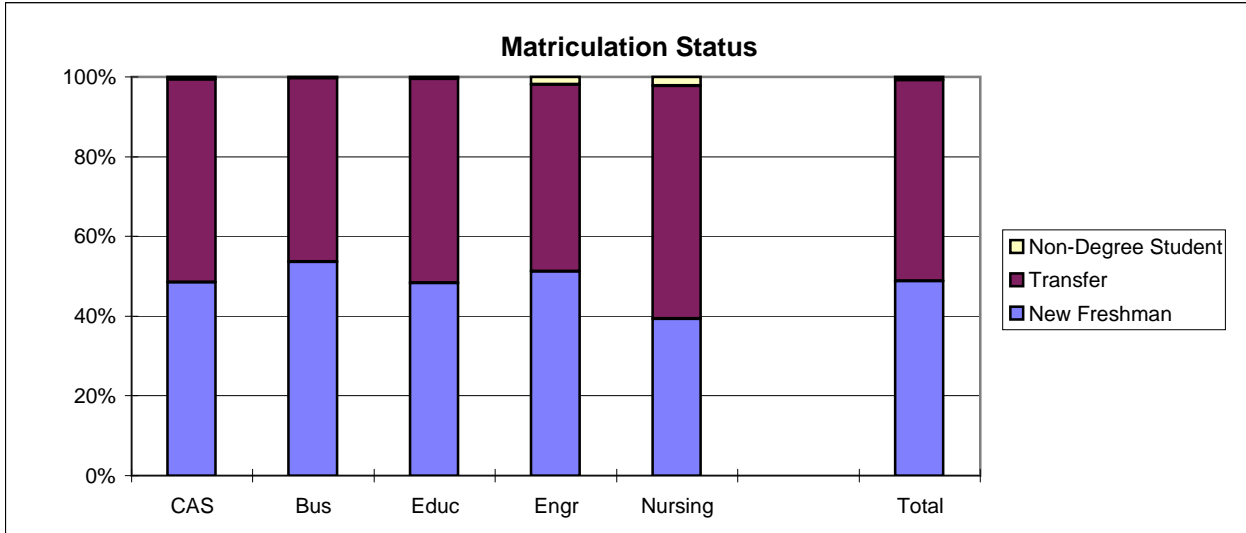
School Detail	All One Year Out Survey Respondents						
	CAS	Bus	Educ	Engr	Nursing	Total	
Total	208	133	157	63	85	646	
Female	60.1%	60.2%	84.7%	7.9%	90.6%	65.0%	
Male	39.9%	39.8%	15.3%	92.1%	9.4%	35.0%	
Missing Data	0.0%	0.0%	0.0%	0.0%	0.0%	0.0%	
White, Non-Hispanic	87.5%	95.5%	89.8%	90.5%	85.9%	89.8%	
Black, Non-Hispanic	2.9%	1.5%	6.4%	1.6%	4.7%	3.6%	
Asian/Pacific Islander	3.4%	1.5%	1.3%	1.6%	4.7%	2.5%	
American Indian/Alaskan Native	0.0%	0.8%	0.0%	0.0%	0.0%	0.2%	
Hispanic	2.9%	0.8%	1.3%	3.2%	1.2%	1.9%	
Non-Resident Alien	0.5%	0.0%	0.0%	0.0%	0.0%	0.2%	
Missing Data	2.9%	0.0%	1.3%	3.2%	3.5%	2.0%	
Age at Graduation	range	21 to 50	20 to 54	20 to 63	21 to 50	21 to 58	20 to 63
	median	23	22.0	22	23.0	24	23
Bachelor of Science	63.5%	80.5%	89.8%	100.0%	100.0%	81.7%	
Bachelor of Music	1.0%	0.0%	0.0%	0.0%	0.0%	0.3%	
Bachelor of Arts	29.3%	0.0%	10.2%	0.0%	0.0%	11.9%	
Bachelor of Fine Arts	4.3%	0.0%	0.0%	0.0%	0.0%	1.4%	
Bachelor of Sci in Accountancy	0.0%	19.5%	0.0%	0.0%	0.0%	4.0%	
Bachelor of Liberal Studies	1.9%	0.0%	0.0%	0.0%	0.0%	0.6%	
Bachelor of Social Work	0.0%	0.0%	0.0%	0.0%	0.0%	0.0%	
Missing Data	0.0%	0.0%	0.0%	0.0%	0.0%	0.0%	
Graduated Spring 2009	57.2%	52.6%	70.1%	60.3%	78.8%	62.5%	
Graduated Summer 2009	14.4%	11.3%	7.6%	9.5%	0.0%	9.8%	
Graduated Fall 2009	28.4%	36.1%	22.3%	30.2%	21.2%	27.7%	
Missing Data	0.0%	0.0%	0.0%	0.0%	0.0%	0.0%	
Matriculated as a New Freshman	51.0%	54.9%	51.6%	49.2%	40.0%	50.3%	
Matriculated as a Transfer	48.1%	44.4%	48.4%	47.6%	58.8%	48.8%	
Matriculated as a Non-Degree Student	1.0%	0.8%	0.0%	3.2%	1.2%	0.9%	
Missing Data	0.0%	0.0%	0.0%	0.0%	0.0%	0.0%	
Time to Degree for New Freshmen							
3 Years or Fewer	7.5%	21.9%	6.2%	6.5%	2.9%	9.8%	
4 Years	53.8%	52.1%	66.7%	54.8%	61.8%	57.5%	
5 Years	25.5%	16.4%	18.5%	32.3%	8.8%	20.6%	
6 Years	5.7%	6.8%	3.7%	3.2%	14.7%	6.2%	
7 Years	3.8%	0.0%	0.0%	0.0%	5.9%	1.8%	
8 Years	0.9%	0.0%	1.2%	0.0%	2.9%	0.9%	
9 Years	0.9%	2.7%	1.2%	3.2%	2.9%	1.8%	
10 Years	0.9%	0.0%	1.2%	0.0%	0.0%	0.6%	
11 Years or More	0.9%	0.0%	1.2%	0.0%	0.0%	0.6%	
Missing Data	0.0%	0.0%	0.0%	0.0%	0.0%	0.0%	
Time to Degree for Transfers							
2 or Fewer Years	33.0%	39.0%	42.1%	23.3%	48.0%	37.8%	
3 Years	31.0%	37.3%	35.5%	43.3%	28.0%	34.0%	
4 Years	18.0%	6.8%	7.9%	16.7%	10.0%	12.1%	
5 Years	9.0%	5.1%	2.6%	3.3%	6.0%	5.7%	
6 Years	4.0%	3.4%	3.9%	0.0%	2.0%	3.2%	
7 Years	0.0%	0.0%	1.3%	6.7%	0.0%	1.0%	
8 Years	0.0%	1.7%	0.0%	3.3%	0.0%	0.6%	
9 Years	1.0%	0.0%	0.0%	0.0%	0.0%	0.3%	
10 Years or More	4.0%	6.8%	6.6%	3.3%	6.0%	5.4%	
Missing Data	0.0%	0.0%	0.0%	0.0%	0.0%	0.0%	
Graduating GPA (4 point scale)	Mean	3.197	3.210	3.476	3.079	3.522	3.299
	Std Dev	0.489	0.418	0.410	0.451	0.312	0.457

2009 Baccalaureate Recipients Profile



2009 Baccalaureate Recipients

Profile, cont.



Southern Illinois University Edwardsville
Survey of 2009 Baccalaureate Graduates -- One Year Out
Survey Responses -- Part I
Employment Questions

School Detail	CAS	Bus	Educ	Engr	Nursing	Total
Number of Survey Respondents *	208	133	157	63	85	646
1. Number Employed:						
Full-time	51.9%	78.6%	50.0%	79.4%	94.1%	65.3%
Part-time	25.7%	13.0%	27.9%	9.5%	4.7%	19.2%
Not, but Seeking	12.1%	6.9%	13.6%	7.9%	0.0%	9.4%
Not, not Seeking	10.2%	1.5%	8.4%	3.2%	1.2%	6.1%
Number Responding	206	131	154	63	85	639
The remaining questions in Part I were to be answered only by respondents who were employed full-time or part-time.						
	160	120	120	56	84	540
2. Place of Employment						
Illinois	62.3%	60.0%	83.2%	71.2%	50.0%	65.9%
Missouri	25.8%	28.2%	9.7%	21.2%	40.9%	24.2%
Other	11.9%	11.8%	7.1%	7.7%	9.1%	10.0%
Number Responding	151	110	113	52	66	492
3. Classification of Primary Employer						
Self-Employed or Private Practice	4.4%	2.5%	1.7%	7.3%	0.0%	3.0%
Business (Industrial, Commercial or Service)	38.8%	62.7%	16.7%	54.5%	1.2%	34.9%
Professional Firm (e.g., Engineering, Law)	3.1%	10.2%	0.0%	23.6%	0.0%	5.6%
College or University	13.1%	8.5%	11.7%	1.8%	0.0%	8.6%
Elementary/Secondary School	8.8%	0.0%	50.0%	0.0%	1.2%	14.0%
Health Agency (e.g. Hospital, Clinic)	10.0%	0.8%	5.0%	0.0%	92.8%	18.7%
Federal, State, or Local Government	9.4%	11.9%	1.7%	7.3%	2.4%	6.9%
Armed Services	1.3%	0.0%	0.8%	1.8%	2.4%	1.1%
NonProfit (Non-Government)	5.0%	1.7%	3.3%	0.0%	0.0%	2.6%
Other	6.3%	1.7%	9.2%	3.6%	0.0%	4.7%
Number Responding	160	118	120	55	83	536
4. Job Satisfaction						
Very Satisfied	23.8%	28.3%	34.2%	40.0%	33.3%	30.2%
Satisfied	33.8%	35.0%	39.2%	41.8%	50.0%	38.6%
Somewhat Satisfied	21.9%	20.0%	13.3%	12.7%	10.7%	16.9%
Somewhat Dissatisfied	10.6%	8.3%	7.5%	3.6%	2.4%	7.4%
Dissatisfied	7.5%	5.0%	4.2%	0.0%	1.2%	4.5%
Very Dissatisfied	2.5%	3.3%	1.7%	1.8%	2.4%	2.4%
Number Responding	160	120	120	55	84	539
5. Job in Field?						
Closely Related	25.6%	38.7%	54.2%	58.9%	90.4%	48.3%
Related	23.8%	39.5%	26.7%	26.8%	8.4%	25.8%
Unrelated (choice unknown)	1.3%	0.0%	0.0%	0.0%	0.0%	0.4%
Unrelated (by choice)	16.9%	9.2%	6.7%	0.0%	0.0%	8.6%
Unrelated (not by choice)	32.5%	12.6%	12.5%	14.3%	1.2%	16.9%
Number Responding	160	119	120	56	83	538
6. Timing of Securing First Job After Degree						
Held the Same Job While Enrolled	29.4%	22.5%	14.3%	26.8%	17.9%	22.4%
Secured Job by Graduation	18.8%	28.3%	23.5%	28.6%	57.1%	28.9%
Secured Job After Graduation(timing unknown)	0.0%	2.5%	0.8%	0.0%	0.0%	0.7%
Less than 1 Month After Graduation	6.9%	10.0%	4.2%	5.4%	6.0%	6.7%
1 to 3 Months After Graduation	11.3%	10.8%	20.2%	8.9%	7.1%	12.2%
3 to 6 Months After Graduation	17.5%	14.2%	18.5%	8.9%	7.1%	14.5%
6 to 9 Months After Graduation	10.6%	7.5%	10.9%	12.5%	3.6%	9.1%
More than 9 Months After Graduation	5.6%	4.2%	7.6%	8.9%	1.2%	5.4%
Number Responding	160	120	119	56	84	539

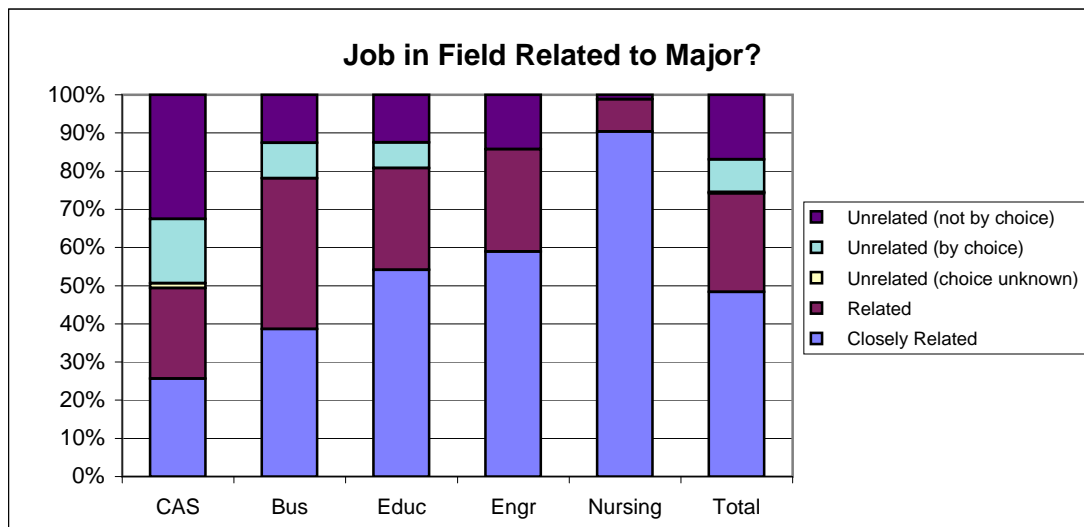
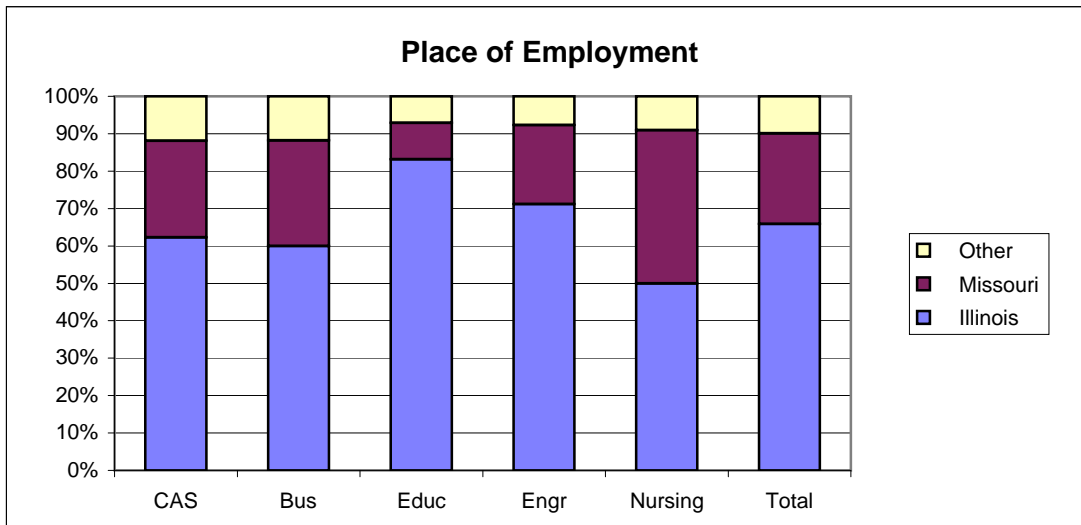
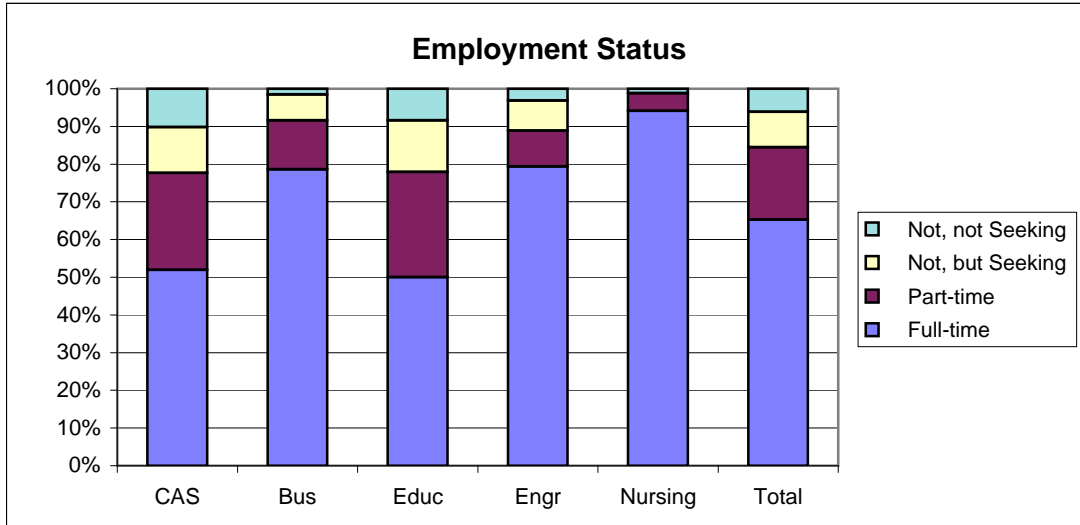
Southern Illinois University Edwardsville
Survey of 2009 Baccalaureate Graduates -- One Year Out
Survey Responses -- Part I
Employment Questions

School Detail, cont.	CAS	Bus	Educ	Engr	Nursing	Total
7. Annual Earned Income in Current Job Before Taxes						
Employed Full-Time						
Less Than \$15,000	5.2%	1.0%	5.3%	0.0%	0.0%	2.6%
\$15,000 to 19,999	9.3%	4.0%	9.3%	2.3%	0.0%	5.4%
\$20,000 to \$24,999	14.4%	9.9%	17.3%	2.3%	0.0%	9.8%
\$25,000 to \$29,999	17.5%	16.8%	22.7%	2.3%	0.0%	13.4%
\$30,000 to \$34,999	13.4%	15.8%	25.3%	6.8%	1.4%	13.4%
\$35,000 to \$39,999	16.5%	14.9%	13.3%	9.1%	16.9%	14.7%
\$40,000 or More	23.7%	37.6%	6.7%	77.3%	81.7%	40.7%
Number Responding	97	101	75	44	71	388
Mean Salary	\$34,822	\$36,714	\$28,037	\$47,020	\$45,604	\$37,359
Employed Part-Time						
Less Than \$5,000	4.3%	0.0%	6.1%	0.0%	0.0%	3.8%
5,000 to \$9,999	28.3%	18.8%	30.3%	0.0%	0.0%	25.0%
\$10,000 to \$14,999	39.1%	37.5%	24.2%	16.7%	33.3%	32.7%
\$15,000 to \$19,999	19.6%	12.5%	21.2%	50.0%	0.0%	20.2%
\$20,000 or More	8.7%	31.3%	18.2%	33.3%	66.7%	18.3%
Number Responding	46	16	33	6	3	104
Mean Salary	\$12,070	\$16,463	\$13,224	\$21,267	\$24,967	\$14,014
8. Bachelor's Degree Preparation for Job						
Very Well	11.0%	11.7%	25.6%	17.9%	32.1%	18.4%
Well	23.2%	33.3%	32.5%	41.1%	36.9%	31.6%
Adequately	40.0%	36.7%	32.5%	26.8%	25.0%	33.8%
Inadequately	10.3%	12.5%	2.6%	5.4%	4.8%	7.7%
Poorly	7.1%	3.3%	6.0%	1.8%	0.0%	4.3%
Very Poorly	8.4%	2.5%	0.9%	7.1%	1.2%	4.1%
Number Responding	155	120	117	56	84	532
9a. Primary Occupation						
Management	7.2%	18.6%	0.9%	7.4%	0.0%	7.3%
Business Operations	5.3%	19.5%	1.7%	0.0%	0.0%	6.3%
Financial Specialists	1.3%	19.5%	0.0%	1.9%	0.0%	5.0%
Computer Specialists	1.3%	11.9%	0.0%	14.8%	0.0%	4.6%
Mathematical Scientists and Technicians	0.0%	0.0%	0.0%	1.9%	0.0%	0.2%
Architects, Surveyors, and Cartographers	0.7%	0.0%	0.0%	1.9%	0.0%	0.4%
Engineers and Related Technicians	0.0%	1.7%	0.0%	50.0%	0.0%	5.5%
Life & Physical Scientists, and Technicians	5.9%	0.0%	0.0%	0.0%	0.0%	1.7%
Social Scientists	2.0%	0.8%	0.9%	0.0%	0.0%	1.0%
Health: Doctors	0.0%	0.0%	0.0%	0.0%	0.0%	0.0%
Health: Registered Nurses	0.7%	0.0%	0.0%	0.0%	97.6%	15.9%
Health: Theratpists	0.0%	0.0%	2.6%	0.0%	0.0%	0.6%
Health: Oth Practitnrs, Prof.s, & Suppt Wkrs	8.6%	0.0%	6.1%	1.9%	0.0%	4.0%
Community & Social Service	3.3%	0.8%	7.0%	0.0%	0.0%	2.7%
Legal: Attorneys/Judges	0.7%	0.8%	0.9%	0.0%	0.0%	0.6%
Legal: Legal Support Workers	0.7%	0.0%	0.0%	0.0%	0.0%	0.2%
Education: Early Childhood Teachers	0.7%	0.8%	10.4%	0.0%	0.0%	2.7%
Education: Elementary School Teachers	0.7%	0.0%	20.9%	0.0%	0.0%	4.8%
Education: Middle School Teachers	1.3%	0.0%	6.1%	0.0%	0.0%	1.7%
Education: Secondary School Teachers	6.6%	0.0%	1.7%	0.0%	0.0%	2.3%
Education: Special Education Teachers	1.3%	0.0%	15.7%	0.0%	0.0%	3.8%
Education: Other, except Administrators	6.6%	0.8%	6.1%	1.9%	0.0%	3.6%
continued						

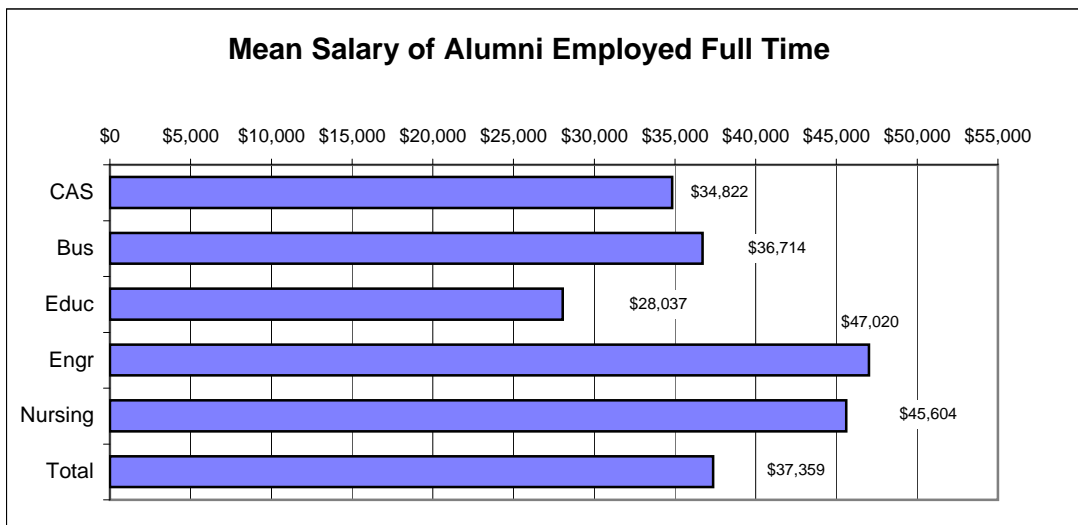
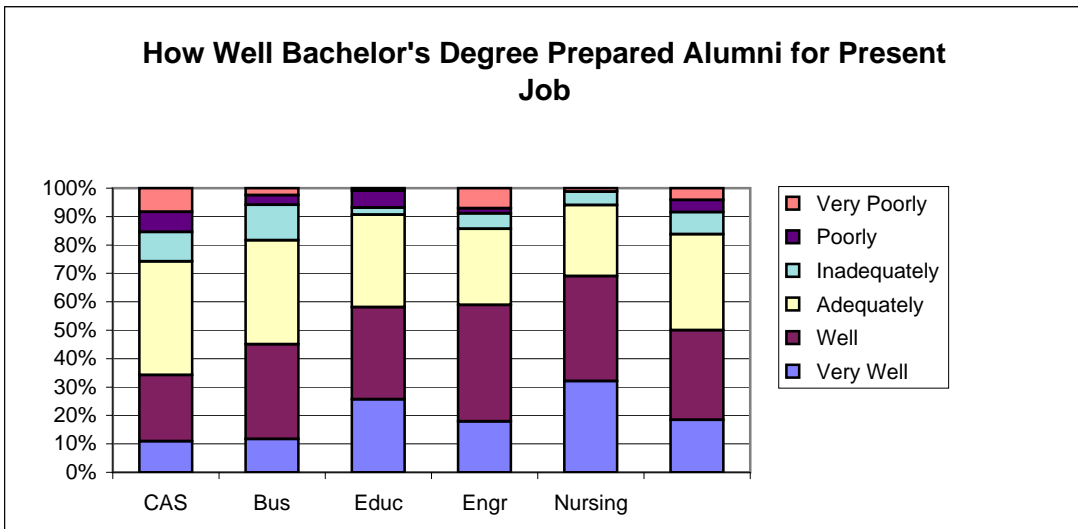
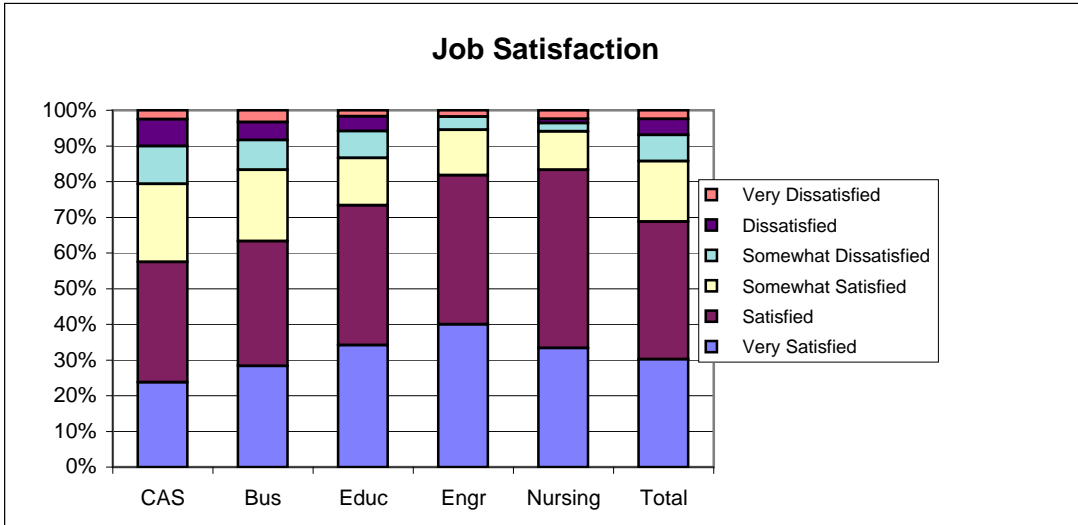
Southern Illinois University Edwardsville
Survey of 2009 Baccalaureate Graduates -- One Year Out
Survey Responses -- Part I
Employment Questions

School Detail, cont.	CAS	Bus	Educ	Engr	Nursing	Total
9a. continuation of Primary Occupation						
Library Occupations	0.0%	0.0%	0.0%	0.0%	0.0%	0.0%
Art and Design Workers	3.3%	0.0%	0.0%	0.0%	0.0%	1.0%
Entertainment, Performers, Sports & Related	0.7%	0.8%	2.6%	0.0%	0.0%	1.0%
Media and Communication Workers	2.6%	0.0%	0.0%	0.0%	0.0%	0.8%
Sales	9.9%	9.3%	5.2%	1.9%	0.0%	6.3%
Office & Administration	9.9%	11.9%	4.3%	0.0%	0.0%	6.5%
Protective Services	2.6%	0.0%	0.9%	0.0%	1.2%	1.1%
Food Preparation & Serving	4.6%	0.8%	2.6%	1.9%	0.0%	2.3%
Buildings & Grounds Maintenance	0.7%	0.0%	0.0%	1.9%	0.0%	0.4%
Personal Care and Service	3.3%	1.7%	2.6%	0.0%	1.2%	2.1%
Farming, Fishing, and Forestry	1.3%	0.0%	0.0%	0.0%	0.0%	0.4%
Construction & Extractive	2.0%	0.0%	0.0%	5.6%	0.0%	1.1%
Installation, Maintenance, & Repair	0.0%	0.0%	0.0%	0.0%	0.0%	0.0%
Production	2.6%	0.0%	0.0%	1.9%	0.0%	1.0%
Transportation and Material Moving	0.7%	0.0%	0.0%	3.7%	0.0%	0.6%
Military	1.3%	0.0%	0.9%	1.9%	0.0%	0.8%
Number Responding	152	118	115	54	84	523
9b. Industry						
Agriculture, Forestry, and Fishing	4.9%	1.8%	1.0%	5.8%	0.0%	2.7%
Mining	0.0%	0.0%	0.0%	0.0%	0.0%	0.0%
Utilities	0.0%	1.8%	0.0%	3.8%	0.0%	0.8%
Construction	0.7%	1.8%	0.0%	25.0%	0.0%	3.3%
Manufacturing	2.8%	4.6%	1.0%	23.1%	0.0%	4.6%
Wholesale Trade	1.4%	1.8%	1.0%	0.0%	0.0%	1.0%
Retail Trade	10.6%	7.3%	6.1%	3.8%	0.0%	6.5%
Transportation	1.4%	3.7%	0.0%	5.8%	0.0%	1.9%
Information	2.8%	0.9%	0.0%	0.0%	0.0%	1.0%
Finance & Insurance	5.6%	25.7%	1.0%	1.9%	0.0%	7.9%
Real Estate & Rental & Leasing	1.4%	0.9%	0.0%	0.0%	0.0%	0.6%
Professional, Scientific & Technical Services	7.7%	14.7%	1.0%	17.3%	0.0%	7.7%
Management of Companies & Enterprises	1.4%	3.7%	0.0%	0.0%	0.0%	1.3%
Admin & Suppt, Waste Mgmt & Remedtn Svcs	0.0%	0.0%	0.0%	0.0%	0.0%	0.0%
Educational Services	17.6%	6.4%	64.3%	1.9%	0.0%	20.0%
Health Care & Social Assistance	16.2%	1.8%	14.3%	5.8%	98.7%	24.8%
Arts, Entertainment & Recreation	6.3%	0.9%	4.1%	1.9%	0.0%	3.1%
Accommodations & Food Services	4.2%	4.6%	2.0%	1.9%	0.0%	2.9%
Other Services (except Public Admin)	13.4%	12.8%	4.1%	1.9%	0.0%	7.9%
Public Administration	1.4%	4.6%	0.0%	0.0%	1.3%	1.7%
Number Responding	142	109	98	52	78	479

2009 Baccalaureate Graduates One Year Out *Employment*



2009 Baccalaureate Graduates One Year Out *Employment, cont.*

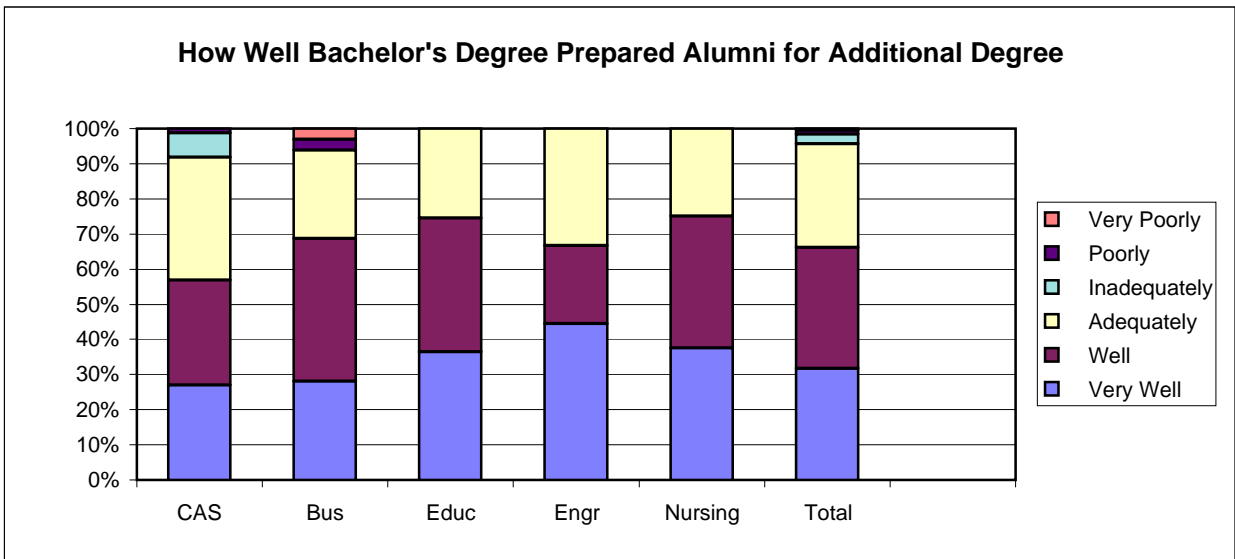
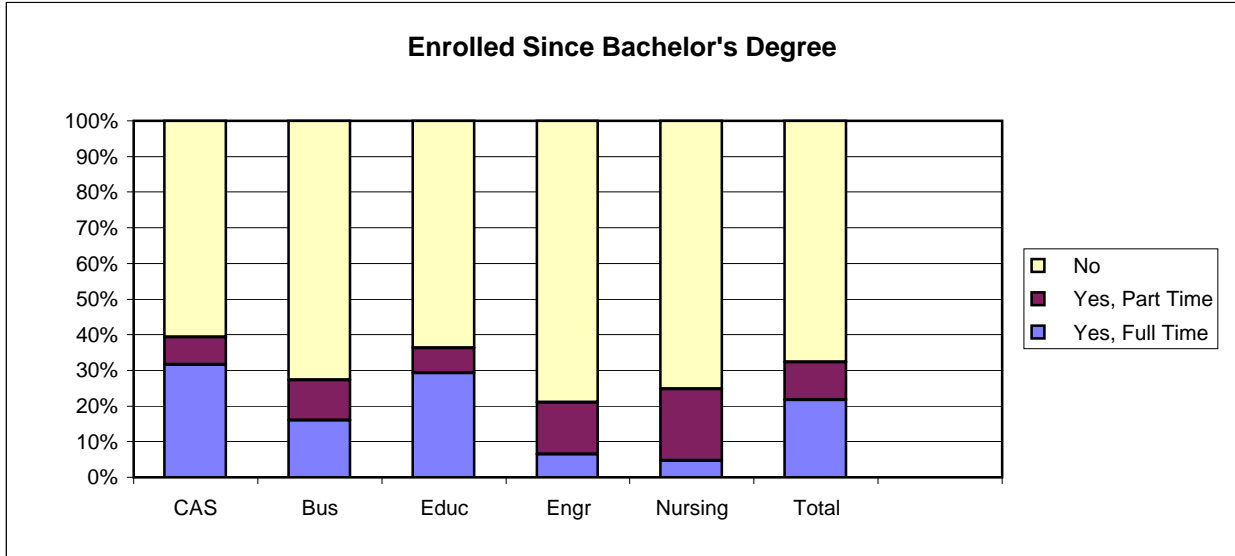


Southern Illinois University Edwardsville
Survey of 2009 Baccalaureate Graduates -- One Year Out
Survey Responses -- Part II
Education Questions

School Detail	CAS	Bus	Educ	Engr	Nursing	Total
Number of Survey Respondents	208	133	157	63	85	646
10. Enrolled in College or University Since Degree?						
Yes, Full Time	31.6%	15.9%	29.3%	6.5%	4.7%	21.8%
Yes, Part Time	7.8%	11.4%	7.0%	14.5%	20.0%	10.6%
No	60.7%	72.7%	63.7%	79.0%	75.3%	67.6%
Number Responding	206	132	157	62	85	642
11. Pursuing or Have Completed an Additional Degree?						
Yes	84.6%	84.2%	90.3%	62.5%	62.1%	81.8%
No	15.4%	15.8%	9.7%	37.5%	37.9%	18.2%
Number Responding	91	38	62	16	29	236
The remaining questions in Part II were to be answered only by respondents who were pursuing or had completed another degree.						
	77	32	56	10	18	193
11b. Pursuing or Completed Which Degree?						
Associate's	0.0%	6.5%	1.8%	0.0%	0.0%	1.6%
Second Bachelor's	11.8%	0.0%	8.9%	0.0%	0.0%	7.4%
Academic Master's (MA, MS, MEd, etc)	51.3%	29.0%	64.3%	80.0%	35.3%	51.6%
Prof. Master's or Ed Specialist	11.8%	64.5%	16.1%	20.0%	35.3%	24.2%
Medicine (MD, OD)	2.6%	0.0%	0.0%	0.0%	0.0%	1.1%
Health Prof. (dentistry, pharmacy, etc.)	9.2%	0.0%	1.8%	0.0%	17.6%	5.8%
Theology/Divinity	2.6%	0.0%	0.0%	0.0%	0.0%	1.1%
Law (LLB, JD)	1.3%	0.0%	1.8%	0.0%	0.0%	1.1%
Doctorate (PhD, EdD, DA, DBA, etc.)	5.3%	0.0%	1.8%	0.0%	0.0%	2.6%
Other	3.9%	0.0%	3.6%	0.0%	11.8%	3.7%
Number Responding	76	31	56	10	17	190
12. How Well Bach. Degree Prepared You for Additional Degree						
Very Well	27.0%	28.1%	36.4%	44.4%	37.5%	31.7%
Well	29.7%	40.6%	38.2%	22.2%	37.5%	34.4%
Adequately	35.1%	25.0%	25.5%	33.3%	25.0%	29.6%
Inadequately	6.8%	0.0%	0.0%	0.0%	0.0%	2.7%
Poorly	1.4%	3.1%	0.0%	0.0%	0.0%	1.1%
Very Poorly	0.0%	3.1%	0.0%	0.0%	0.0%	0.5%
Number Responding	74	32	55	9	16	186

05/16/2011

2009 Baccalaureate Graduates One Year Out Additional Education

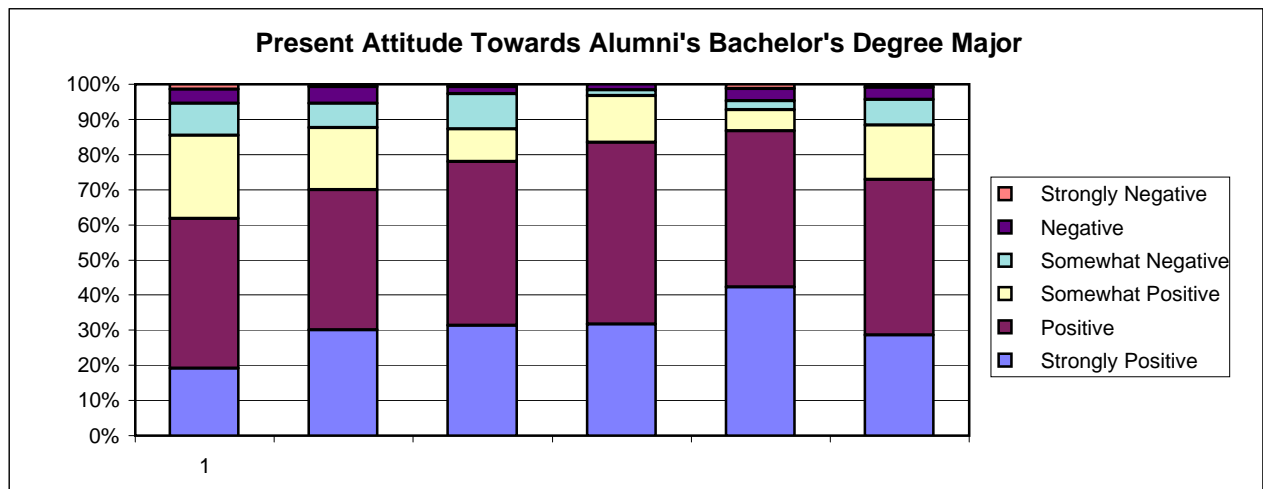
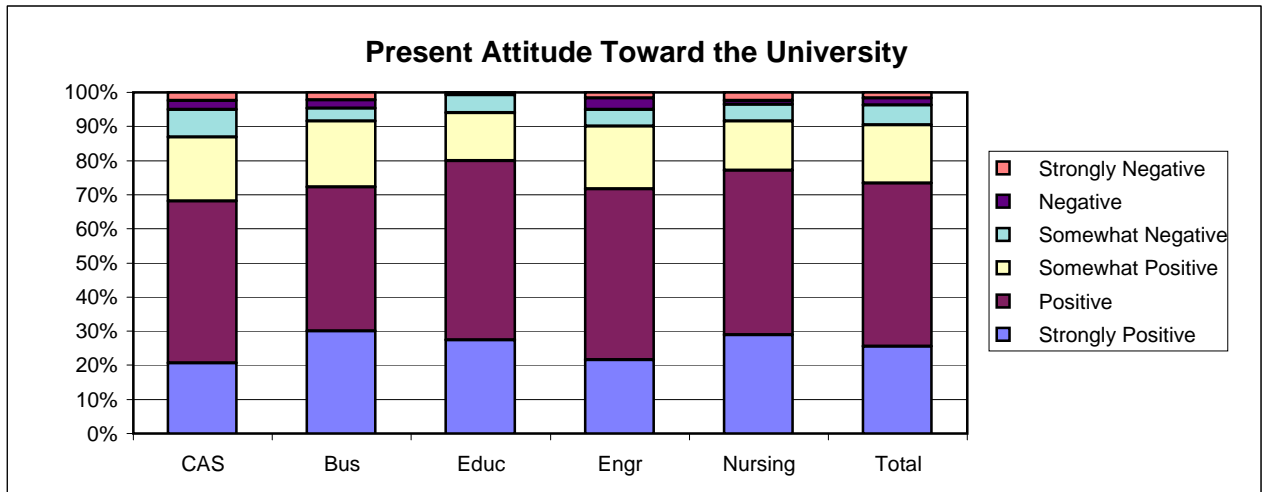


Southern Illinois University Edwardsville
Survey of 2009 Baccalaureate Graduates -- One Year Out
Survey Responses -- Part III
Satisfaction Questions

School Detail	CAS	Bus	Educ	Engr	Nursing	Total
Number of Survey Respondents	208	133	157	63	85	646
13. Present Attitude Towards the University						
Strongly Positive	20.7%	30.0%	27.3%	21.7%	28.9%	25.4%
Positive	47.5%	42.3%	52.7%	50.0%	48.2%	48.0%
Somewhat Positive	18.7%	19.2%	14.0%	18.3%	14.5%	17.1%
Somewhat Negative	8.1%	3.8%	5.3%	5.0%	4.8%	5.8%
Negative	2.5%	2.3%	0.7%	3.3%	1.2%	1.9%
Strongly Negative	2.5%	2.3%	0.0%	1.7%	2.4%	1.8%
Number Responding	198	130	150	60	83	621
14. Present Attitude Towards your Bachelor's Degree Major						
Strongly Positive	19.1%	30.0%	31.3%	31.7%	42.2%	28.6%
Positive	42.7%	40.0%	46.7%	51.7%	44.6%	44.2%
Somewhat Positive	23.6%	17.7%	9.3%	13.3%	6.0%	15.6%
Somewhat Negative	9.0%	6.9%	10.0%	1.7%	2.4%	7.2%
Negative	4.0%	4.6%	2.0%	1.7%	3.6%	3.4%
Strongly Negative	1.5%	0.8%	0.7%	0.0%	1.2%	1.0%
Number Responding	199	130	150	60	83	622

05/03/2011

2009 Baccalaureate Graduates One Year Out Satisfaction



Southern Illinois University Edwardsville
Survey of 2009 Baccalaureate Graduates -- One Year Out
Survey Responses -- Part IV
Educational Practices Questions

School Detail	CAS	Bus	Educ	Engr	Nursing	Total
Number of Survey Respondents	208	133	157	63	85	646
15. Faculty in Major Were Accessible Outside of Class						
Very Often	36.4%	30.8%	49.7%	47.6%	34.5%	39.3%
Often	47.1%	54.1%	40.8%	39.7%	47.6%	46.3%
Sometimes	13.6%	13.5%	7.0%	9.5%	13.1%	11.5%
Infrequently	2.9%	0.8%	2.5%	3.2%	3.6%	2.5%
Never	0.0%	0.8%	0.0%	0.0%	1.2%	0.3%
Number Responding	206	133	157	63	84	643
16. In Major, Student was Expected to Work Cooperatively with Other Students						
Very Often	29.0%	62.4%	58.0%	44.4%	58.8%	48.4%
Often	38.6%	31.6%	33.8%	44.4%	36.5%	36.3%
Sometimes	26.6%	5.3%	6.4%	11.1%	3.5%	12.7%
Infrequently	4.8%	0.8%	1.3%	0.0%	1.2%	2.2%
Never	1.0%	0.0%	0.6%	0.0%	0.0%	0.5%
Number Responding	207	133	157	63	85	645
17. In Major, Faculty Encouraged Student to Challenge Ideas (student's, other students, and in readings & materials)						
Very Often	32.4%	16.5%	40.8%	19.0%	34.1%	30.1%
Often	34.8%	46.6%	37.6%	41.3%	37.6%	38.9%
Sometimes	25.6%	27.1%	17.2%	33.3%	22.4%	24.2%
Infrequently	6.8%	7.5%	4.5%	6.3%	4.7%	6.0%
Never	0.5%	2.3%	0.0%	0.0%	1.2%	0.8%
Number Responding	207	133	157	63	85	645
18. In Major, Faculty Used Appropriate Teaching Activities to Help Student Learn						
Very Often	28.0%	19.5%	43.3%	19.0%	20.0%	28.1%
Often	51.2%	48.9%	43.3%	61.9%	56.5%	50.5%
Sometimes	17.4%	26.3%	12.1%	19.0%	17.6%	18.1%
Infrequently	3.4%	3.8%	1.3%	0.0%	4.7%	2.8%
Never	0.0%	1.5%	0.0%	0.0%	1.2%	0.5%
Number Responding	207	133	157	63	85	645
19. In Major, Faculty had High Expectations for Quality Of Student Work						
Very Often	34.5%	28.6%	44.6%	19.0%	43.5%	35.4%
Often	45.6%	51.9%	40.1%	60.3%	43.5%	46.7%
Sometimes	16.5%	16.5%	13.4%	19.0%	11.8%	15.4%
Infrequently	2.9%	2.3%	1.9%	1.6%	1.2%	2.2%
Never	0.5%	0.8%	0.0%	0.0%	0.0%	0.3%
Number Responding	206	133	157	63	85	644
20. In Major, Faculty Provided Timely Feedback						
Very Often	33.8%	21.1%	39.5%	15.9%	34.1%	30.9%
Often	45.9%	50.4%	45.2%	61.9%	45.9%	48.2%
Sometimes	16.4%	24.1%	12.7%	19.0%	16.5%	17.4%
Infrequently	3.9%	3.8%	1.9%	1.6%	2.4%	2.9%
Never	0.0%	0.8%	0.6%	1.6%	1.2%	0.6%
Number Responding	207	133	157	63	85	645

Southern Illinois University Edwardsville
Survey of 2009 Baccalaureate Graduates -- One Year Out
Survey Responses -- Part IV
Educational Practices Questions

School Detail, cont.	CAS	Bus	Educ	Engr	Nursing	Total
21. In Major, Faculty Encouraged Students' Questions and Discussion in Class						
Very Often	43.5%	36.8%	56.1%	35.5%	42.9%	44.3%
Often	42.0%	42.9%	33.8%	48.4%	41.7%	40.7%
Sometimes	11.1%	17.3%	8.9%	14.5%	13.1%	12.4%
Infrequently	3.4%	1.5%	1.3%	1.6%	2.4%	2.2%
Never	0.0%	1.5%	0.0%	0.0%	0.0%	0.3%
Number Responding	207	133	157	62	84	643
22. In Major, Student Spent Necessary Time and Energy to Come to Class Prepared						
Very Often	45.9%	38.3%	61.1%	36.5%	60.7%	49.1%
Often	44.4%	47.4%	33.8%	46.0%	29.8%	40.7%
Sometimes	7.2%	12.8%	3.8%	15.9%	9.5%	8.7%
Infrequently	1.9%	0.8%	0.6%	1.6%	0.0%	1.1%
Never	0.5%	0.8%	0.6%	0.0%	0.0%	0.5%
Number Responding	207	133	157	63	84	644

05/03/2011

Southern Illinois University Edwardsville
Survey of 2009 Baccalaureate Graduates -- One Year Out
Survey Responses -- Part V
Program Quality Questions

School Detail	CAS	Bus	Educ	Engr	Nursing	Total
Number of Survey Respondents	208	133	157	63	85	646
23A. Quality of Major in Offering						
Sufficient Courses						
Excellent	26.1%	41.4%	49.0%	17.5%	51.8%	37.4%
Good	50.2%	44.4%	40.8%	61.9%	37.6%	46.2%
Fair	15.0%	10.5%	8.3%	15.9%	8.2%	11.6%
Poor	8.7%	3.8%	1.9%	4.8%	2.4%	4.8%
Number Responding	207	133	157	63	85	645
23B. Quality of Major in Offering						
Convenient Class Times						
Excellent	20.3%	26.3%	35.7%	22.2%	30.1%	26.7%
Good	45.9%	47.4%	45.2%	49.2%	45.8%	46.3%
Fair	25.6%	21.8%	16.6%	23.8%	21.7%	21.9%
Poor	8.2%	4.5%	2.5%	4.8%	2.4%	5.0%
Number Responding	207	133	157	63	83	643
23C. Quality of Major in Offering						
Logical Class Sequences						
Excellent	26.6%	33.3%	42.7%	30.2%	37.6%	33.7%
Good	47.3%	47.7%	42.0%	54.0%	44.7%	46.4%
Fair	20.8%	15.2%	14.6%	14.3%	12.9%	16.5%
Poor	5.3%	3.8%	0.6%	1.6%	4.7%	3.4%
Number Responding	207	132	157	63	85	644
24 Quality of Faculty in Major						
Excellent	41.0%	43.2%	55.5%	35.5%	38.1%	44.0%
Good	45.4%	47.0%	38.1%	51.6%	46.4%	44.7%
Fair	11.7%	9.1%	5.8%	12.9%	14.3%	10.2%
Poor	2.0%	0.8%	0.6%	0.0%	1.2%	1.1%
Number Responding	205	132	155	62	84	638
25 Grading Standards in Major Were:						
Too High	4.8%	6.0%	1.9%	0.0%	10.7%	4.7%
About Right	83.6%	88.0%	92.3%	92.1%	84.5%	87.6%
Too Low	11.6%	6.0%	5.8%	7.9%	4.8%	7.8%
Number Responding	207	133	156	63	84	643

05/03/2011

Southern Illinois University Edwardsville
Survey of 2009 Baccalaureate Graduates -- One Year Out
Survey Responses -- Part VI
Educational Effectiveness Questions

School Detail	CAS	Bus	Educ	Engr	Nursing	Total
Number of Survey Respondents	208	133	157	63	85	646
26. Helpfulness of University Experiences in:						
A. Developing Critical Thinking Ability						
Extremely Helpful	17.8%	11.3%	22.3%	17.5%	19.0%	17.7%
Very Helpful	39.4%	48.1%	36.9%	55.6%	50.0%	43.6%
Moderately Helpful	36.1%	35.3%	38.2%	27.0%	25.0%	34.1%
Slightly Helpful	6.3%	3.8%	2.5%	0.0%	6.0%	4.2%
Not Helpful	0.5%	1.5%	0.0%	0.0%	0.0%	0.5%
Number Responding	208	133	157	63	84	645
B. Developing Sense of Ethics						
Extremely Helpful	12.0%	16.5%	20.4%	14.3%	19.0%	16.1%
Very Helpful	30.8%	36.1%	40.8%	42.9%	44.0%	37.2%
Moderately Helpful	37.5%	37.6%	27.4%	25.4%	28.6%	32.7%
Slightly Helpful	14.9%	3.8%	9.6%	15.9%	4.8%	10.1%
Not Helpful	4.8%	6.0%	1.9%	1.6%	3.6%	3.9%
Number Responding	208	133	157	63	84	645
C. Understanding People with Different Backgrounds, Habits, Values, Appearances and Abilities						
Extremely Helpful	26.0%	20.3%	33.1%	19.4%	23.8%	25.6%
Very Helpful	35.6%	36.1%	38.2%	25.8%	47.6%	37.0%
Moderately Helpful	26.0%	30.1%	21.7%	38.7%	20.2%	26.2%
Slightly Helpful	8.7%	8.3%	5.7%	9.7%	6.0%	7.6%
Not Helpful	3.8%	5.3%	1.3%	6.5%	2.4%	3.6%
Number Responding	208	133	157	62	84	644
D. Becoming a More Active Citizen						
Extremely Helpful	12.6%	4.5%	14.6%	4.8%	9.5%	10.3%
Very Helpful	25.7%	29.3%	30.6%	21.0%	32.1%	28.0%
Moderately Helpful	33.5%	34.6%	34.4%	40.3%	38.1%	35.2%
Slightly Helpful	19.4%	19.5%	12.7%	27.4%	14.3%	17.9%
Not Helpful	8.7%	12.0%	7.6%	6.5%	6.0%	8.6%
Number Responding	206	133	157	62	84	642
E. Improving Quality of Life (aside from financial benefits)						
Extremely Helpful	15.4%	11.3%	21.7%	4.8%	12.0%	14.6%
Very Helpful	29.3%	36.8%	31.8%	23.8%	38.6%	32.1%
Moderately Helpful	32.7%	34.6%	31.8%	47.6%	30.1%	34.0%
Slightly Helpful	13.9%	10.5%	10.2%	15.9%	10.8%	12.1%
Not Helpful	8.7%	6.8%	4.5%	7.9%	8.4%	7.1%
Number Responding	208	133	157	63	83	644
F. Developing Reasoning Skills						
Extremely Helpful	17.9%	17.3%	26.3%	22.2%	16.7%	20.1%
Very Helpful	42.0%	45.9%	36.5%	46.0%	53.6%	43.4%
Moderately Helpful	31.9%	30.8%	31.4%	27.0%	22.6%	29.9%
Slightly Helpful	7.2%	2.3%	5.8%	3.2%	3.6%	5.0%
Not Helpful	1.0%	3.8%	0.0%	1.6%	3.6%	1.7%
Number Responding	207	133	156	63	84	643

Southern Illinois University Edwardsville
Survey of 2009 Baccalaureate Graduates -- One Year Out
Survey Responses -- Part VI
Educational Effectiveness Questions

School Detail, cont.	CAS	Bus	Educ	Engr	Nursing	Total
G. Viewing Problems from Different Perspectives						
Extremely Helpful	21.3%	19.5%	29.3%	23.8%	20.2%	23.0%
Very Helpful	45.4%	51.1%	41.4%	52.4%	47.6%	46.6%
Moderately Helpful	24.2%	21.8%	23.6%	20.6%	25.0%	23.3%
Slightly Helpful	8.7%	5.3%	5.7%	1.6%	4.8%	6.1%
Not Helpful	0.5%	2.3%	0.0%	1.6%	2.4%	1.1%
Number Responding	207	133	157	63	84	644
H. Developing Ability to Solve Problems						
Extremely Helpful	17.8%	15.9%	24.8%	33.3%	23.8%	21.4%
Very Helpful	46.6%	49.2%	45.2%	49.2%	44.0%	46.7%
Moderately Helpful	26.4%	30.3%	23.6%	12.7%	25.0%	25.0%
Slightly Helpful	8.2%	2.3%	6.4%	4.8%	6.0%	5.9%
Not Helpful	1.0%	2.3%	0.0%	0.0%	1.2%	0.9%
Number Responding	208	132	157	63	84	644
I. Making Informed Decisions as a Citizen						
Extremely Helpful	16.3%	13.5%	23.6%	11.1%	13.1%	16.6%
Very Helpful	38.0%	42.1%	36.9%	33.3%	39.3%	38.3%
Moderately Helpful	28.8%	30.1%	26.1%	36.5%	34.5%	29.9%
Slightly Helpful	14.4%	9.8%	10.8%	14.3%	10.7%	12.1%
Not Helpful	2.4%	4.5%	2.5%	4.8%	2.4%	3.1%
Number Responding	208	133	157	63	84	645
J. Developing Writing Skills						
Extremely Helpful	26.9%	21.8%	25.5%	11.1%	19.0%	22.9%
Very Helpful	35.6%	34.6%	35.0%	34.9%	31.0%	34.6%
Moderately Helpful	26.0%	30.8%	31.2%	30.2%	38.1%	30.2%
Slightly Helpful	9.1%	9.0%	7.6%	15.9%	9.5%	9.5%
Not Helpful	2.4%	3.8%	0.6%	7.9%	2.4%	2.8%
Number Responding	208	133	157	63	84	645
K. Developing Oral Communication Skills						
Extremely Helpful	28.4%	30.1%	25.5%	14.3%	15.5%	25.0%
Very Helpful	35.6%	35.3%	43.3%	34.9%	40.5%	38.0%
Moderately Helpful	19.7%	27.1%	24.2%	33.3%	31.0%	25.1%
Slightly Helpful	13.0%	4.5%	5.7%	14.3%	9.5%	9.1%
Not Helpful	3.4%	3.0%	1.3%	3.2%	3.6%	2.8%
Number Responding	208	133	157	63	84	645
L. Developing Knowledge of Scientific and Technological Developments						
Extremely Helpful	14.4%	13.5%	17.8%	41.3%	17.9%	18.1%
Very Helpful	35.1%	33.8%	41.4%	34.9%	44.0%	37.5%
Moderately Helpful	30.8%	34.6%	29.9%	20.6%	28.6%	30.1%
Slightly Helpful	13.0%	12.8%	7.0%	3.2%	7.1%	9.8%
Not Helpful	6.7%	5.3%	3.8%	0.0%	2.4%	4.5%
Number Responding	208	133	157	63	84	645

Southern Illinois University Edwardsville
Survey of 2009 Baccalaureate Graduates -- One Year Out
Survey Responses -- Part VI
Educational Effectiveness Questions

School Detail, cont.	CAS	Bus	Educ	Engr	Nursing	Total
27. Undergraduate Education Broadened Interest Beyond Subjects in Major						
Strongly Agree	22.1%	15.0%	22.9%	14.3%	12.9%	18.9%
Agree	51.0%	52.6%	45.9%	46.0%	49.4%	49.4%
Neutral	21.2%	26.3%	26.1%	25.4%	28.2%	24.8%
Disagree	3.8%	4.5%	5.1%	9.5%	8.2%	5.4%
Strongly Disagree	1.9%	1.5%	0.0%	4.8%	1.2%	1.5%
Number Responding	208	133	157	63	85	646
28. Importance of College Education to:						
A. Personal Life						
Very Important	55.8%	59.4%	61.1%	49.2%	71.8%	59.3%
Moderately Important	30.3%	21.8%	33.1%	31.7%	14.1%	27.2%
Slightly Important	7.7%	13.5%	5.7%	12.7%	10.6%	9.3%
Not Important	6.3%	5.3%	0.0%	6.3%	3.5%	4.2%
Number Responding	208	133	157	63	85	646
B. Community Life						
Very Important	31.3%	27.8%	38.2%	22.2%	37.6%	32.2%
Moderately Important	39.9%	26.3%	42.0%	36.5%	36.5%	36.8%
Slightly Important	15.4%	32.3%	15.9%	23.8%	17.6%	20.1%
Not Important	13.5%	13.5%	3.8%	17.5%	8.2%	10.8%
Number Responding	208	133	157	63	85	646
C. Professional Life						
Very Important	60.9%	65.4%	78.3%	76.2%	88.2%	71.2%
Moderately Important	20.8%	18.8%	13.4%	12.7%	3.5%	15.5%
Slightly Important	9.2%	8.3%	5.7%	6.3%	3.5%	7.1%
Not Important	9.2%	7.5%	2.5%	4.8%	4.7%	6.2%
Number Responding	207	133	157	63	85	645
29. Quality of SIUE Education Relative to That of Friends at Other Schools						
Among the Best	12.2%	19.1%	22.3%	15.9%	15.7%	16.9%
Above Average	40.0%	42.0%	42.0%	39.7%	48.2%	41.9%
Average	40.0%	32.8%	33.1%	39.7%	31.3%	35.7%
Below Average	5.9%	4.6%	1.9%	3.2%	3.6%	4.1%
Among the Worst	2.0%	1.5%	0.6%	1.6%	1.2%	1.4%
Number Responding	205	131	157	63	83	639
30. Involvement Since Bachelor's Degree with:						
A. Organized, Formal, Career Related Learning (non-degree)						
Currently Involved	26.8%	33.1%	35.7%	20.6%	44.7%	32.0%
Have Been Involved	31.2%	31.6%	35.7%	39.7%	38.8%	34.2%
Never Involved	42.0%	35.3%	28.6%	39.7%	16.5%	33.8%
Number Responding	205	133	154	63	85	640
B. Personal Enrichment Studies						
Currently Involved	24.5%	16.5%	18.8%	14.3%	17.6%	19.6%
Have Been Involved	32.2%	23.3%	37.0%	14.3%	44.7%	31.4%
Never Involved	43.3%	60.2%	44.2%	71.4%	37.6%	49.0%
Number Responding	208	133	154	63	85	643

Southern Illinois University Edwardsville
Survey of 2009 Baccalaureate Graduates -- One Year Out
Survey Responses -- Part VI
Educational Effectiveness Questions

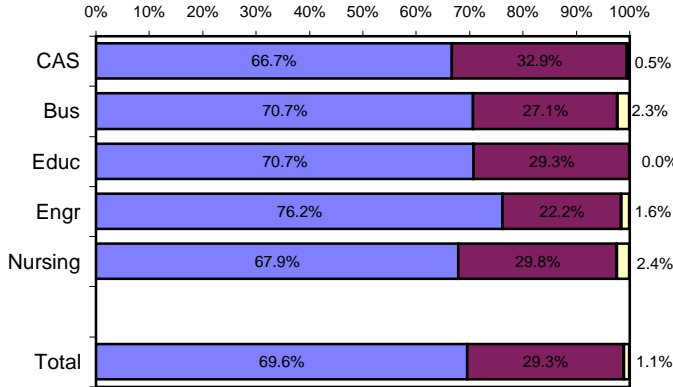
School Detail, cont.	CAS	Bus	Educ	Engr	Nursing	Total
C. Professional Activities or Organizations						
Currently Involved	35.7%	33.8%	43.9%	31.7%	41.2%	37.6%
Have Been Involved	32.4%	27.1%	31.0%	27.0%	31.8%	30.3%
Never Involved	31.9%	39.1%	25.2%	41.3%	27.1%	32.0%
Number Responding	207	133	155	63	85	643
D. Volunteer Work / Community Svc Activities or Organizations						
Currently Involved	29.8%	22.6%	29.7%	15.9%	23.5%	26.1%
Have Been Involved	40.4%	34.6%	47.7%	31.7%	45.9%	40.8%
Never Involved	29.8%	42.9%	22.6%	52.4%	30.6%	33.1%
Number Responding	208	133	155	63	85	644
E. Social / Recreational Activities or Organizations						
Currently Involved	36.2%	33.8%	37.4%	33.3%	35.3%	35.6%
Have Been Involved	42.5%	38.3%	44.5%	34.9%	38.8%	40.9%
Never Involved	21.3%	27.8%	18.1%	31.7%	25.9%	23.5%
Number Responding	207	133	155	63	85	643
F. Political Activities or Organizations						
Currently Involved	7.7%	6.1%	4.5%	4.8%	3.6%	5.8%
Have Been Involved	18.8%	9.8%	13.5%	11.1%	11.9%	14.0%
Never Involved	73.6%	84.1%	81.9%	84.1%	84.5%	80.2%
Number Responding	208	132	155	63	84	642
G. Religious / Ethical Activities or Organizations						
Currently Involved	30.0%	20.3%	29.7%	23.8%	21.2%	26.1%
Have Been Involved	26.1%	21.8%	23.2%	22.2%	28.2%	24.4%
Never Involved	44.0%	57.9%	47.1%	54.0%	50.6%	49.5%
Number Responding	207	133	155	63	85	643
H. Support or Participation in the Arts (music, drama, dance, art)						
Currently Involved	25.7%	11.3%	16.1%	9.5%	15.3%	17.4%
Have Been Involved	34.0%	27.1%	27.1%	25.4%	25.9%	29.0%
Never Involved	40.3%	61.7%	56.8%	65.1%	58.8%	53.6%
Number Responding	206	133	155	63	85	642
I. Reading books not directly related to your job						
Currently Involved	71.5%	51.9%	64.5%	36.5%	74.1%	62.7%
Have Been Involved	18.8%	30.8%	25.8%	28.6%	15.3%	23.5%
Never Involved	9.7%	17.3%	9.7%	34.9%	10.6%	13.8%
Number Responding	207	133	155	63	85	643

05/03/2011

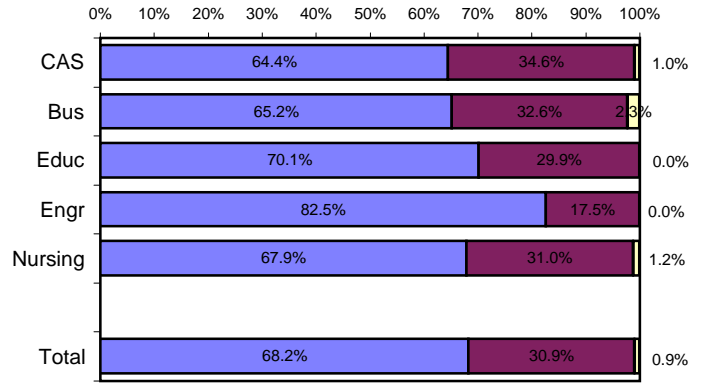
Helpfulness of University Experiences in:

■ Very to Extremely Helpful
 ■ Slightly to Moderately Helpful
 ■ Not Helpful

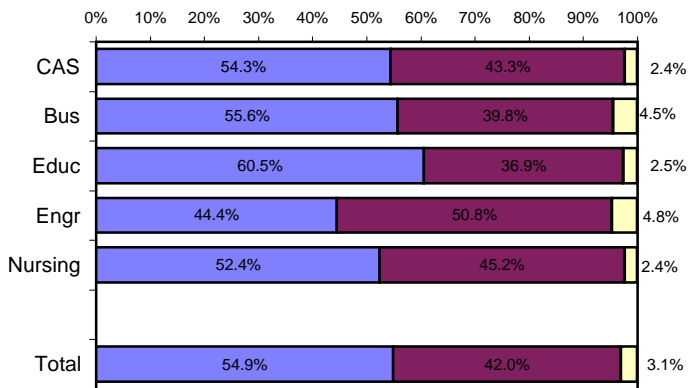
Viewing Problems from Different Perspectives



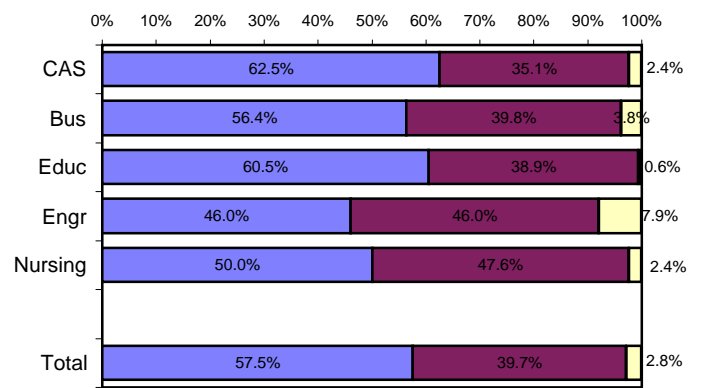
Developing Ability to Solve Problems



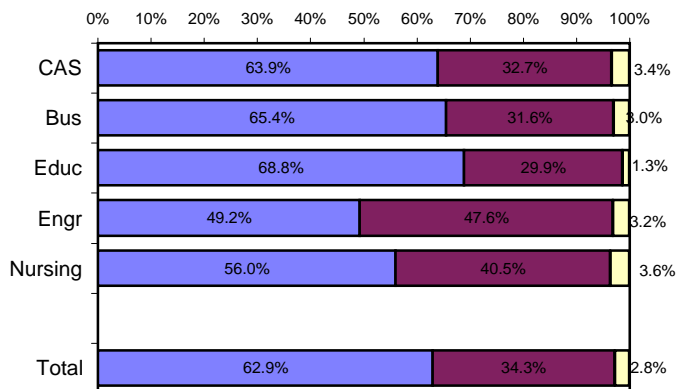
Making Informed Decisions as a Citizen



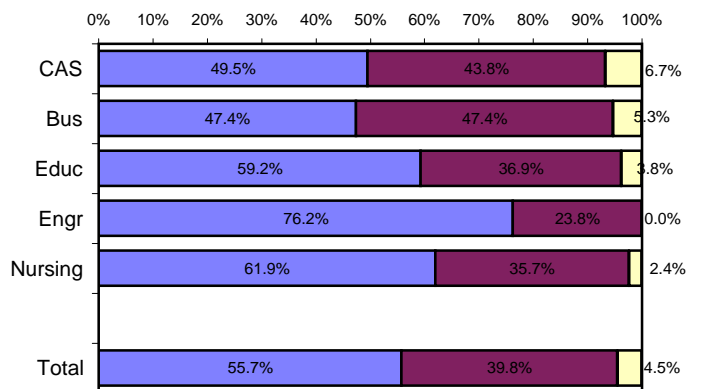
Developing Writing Skills



Developing Oral Communication Skills



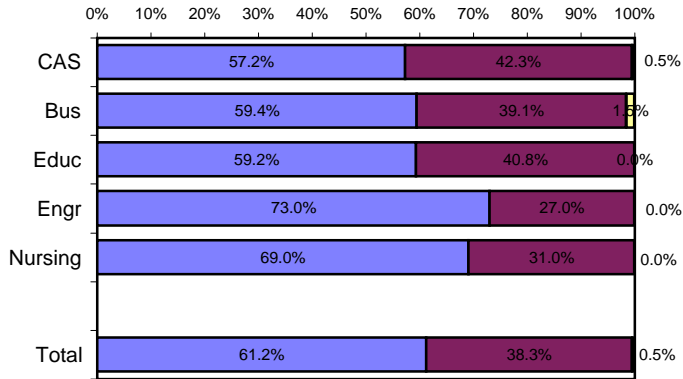
Developing Knowledge of Scientific and Technological Developments



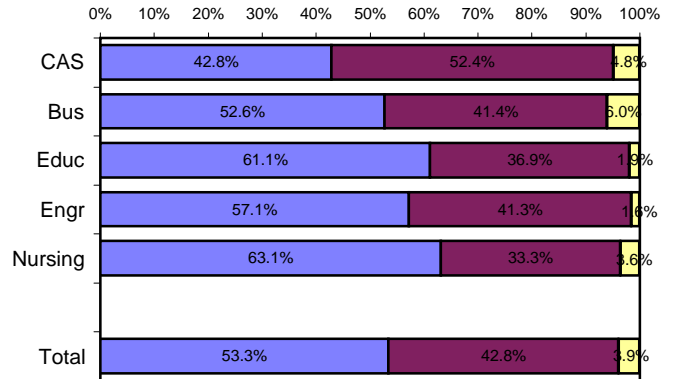
Helpfulness of University Experiences in:

■ Very to Extremely Helpful
 ■ Slightly to Moderately Helpful
 ■ Not Helpful

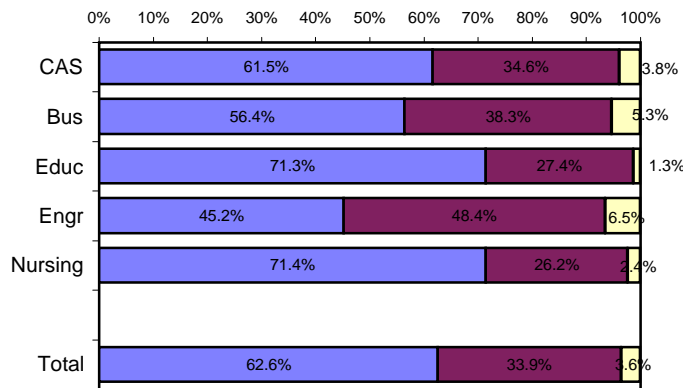
Developing Critical Thinking Ability



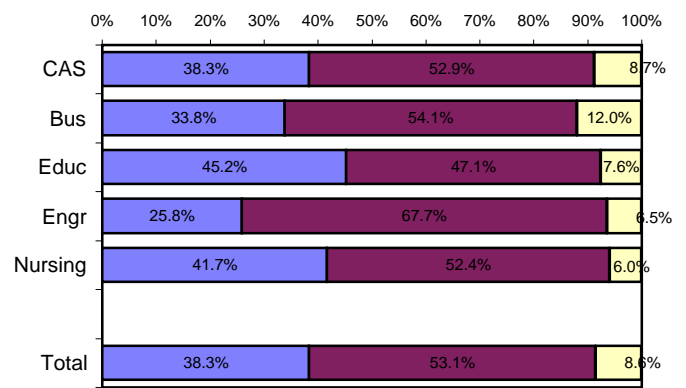
Developing Sense of Ethics



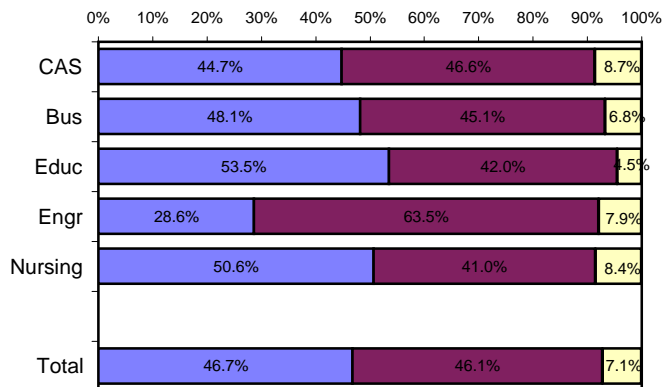
Understanding People with Different Backgrounds



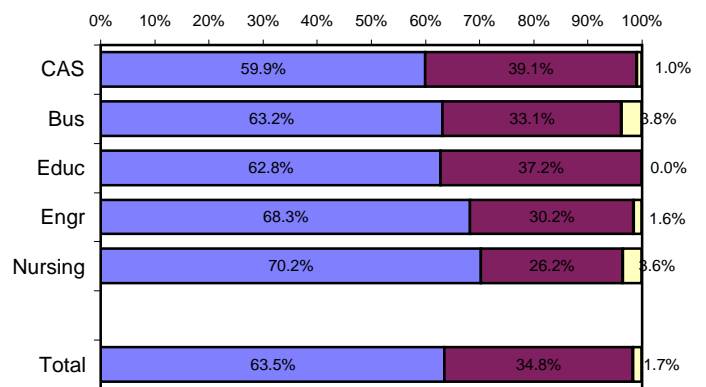
Becoming a More Active Citizen



Improving Quality of Life (aside from financial benefits)



Developing Reasoning Skills



Appendix A

Sample Questionnaire

SOUTHERN ILLINOIS UNIVERSITY EDWARDSVILLE

SURVEY OF 2009 BACCALAUREATE GRADUATES ONE YEAR AFTER GRADUATION

Most of the questions in this survey can be answered simply by circling the appropriate number. We hope you will give us your help and valuable input so that we can design programs that better serve the needs of SIUE students. PLEASE ANSWER THESE QUESTIONS ONLY IN REGARD TO THE SIUE UNDERGRADUATE DEGREE YOU RECEIVED LAST YEAR. Your individual responses to this questionnaire will be kept completely confidential. Thank you for your cooperation. Please return this survey in the envelope provided.

I. Employment

1. Are you currently employed (including self-employed)?

- 1 Yes, full-time 3 No, but am seeking employment
2 Yes, part-time 4 No, and am not seeking employment

If you are NOT employed (responses 3 and 4), skip to *Section II*.

2. What is the Zip Code of your place of employment (e.g., your actual workplace, not corporate headquarters)? _____

3. How would you classify your primary employer?

- | | |
|--|--|
| 1 Self-employed or private practice | 6 Health agency (e.g., hospital, clinic) |
| 2 Business (industrial, commercial or service) | 7 Federal, state, or local government |
| 3 Professional firm (e.g., engineering, law) | 8 Armed services |
| 4 College or university | 9 Non-profit (non-government) |
| 5 Elementary/secondary school (including cooperatives) | 10 Other (please specify) _____ |

4. How satisfied are you with your current job?

- 1 Very Satisfied 2 Satisfied 3 Somewhat Satisfied 4 Somewhat Dissatisfied 5 Dissatisfied 6 Very Dissatisfied

5. How closely related is your current job to your bachelor's degree major?

- 1 Closely Related 2 Related 3 Unrelated

If you marked "3" (unrelated), is this by choice?

- 1 Yes 2 No

6. When did you secure your first job following receipt of your bachelor's degree?

- 1 Held the same job while enrolled
2 Secured job by time of graduation
3 Secured job after graduation

If you marked "3," how many months after graduation did you secure employment?

- 1 Less than 1 month 3 Between 3 and 6 months 5 More than 9 months
2 Between 1 and 3 months 4 Between 6 and 9 months

7. What is your annual earned income before taxes in your current job? _____

8. In general, how well did your bachelor's degree prepare you for your present job?

- 1 Very Well 2 Well 3 Adequately 4 Inadequately 5 Poorly 6 Very poorly

9. Please circle on the lists below both your primary **occupation**¹ (what you do) and the **industry** in which you are employed (where you do it). Although some occupations typically work within one industry, they may be employed in other industries also. An example would be a school nurse — Health: Registered Nurses (11) in Educational Services (15). Examples of the types of occupations contained in each category are provided in italics.

Please write in your actual job title _____ (optional)

Circle One

Occupational Categories

- | | |
|--|---|
| <p>01. Management (<i>such as top executives; marketing, P.R., finance, human resources, administrative services, purchasing, & sales managers; educational administrators; health administrators</i>)</p> <p>02. Business Operations (<i>such as buyers & purchasing agents; insurance claims adjusters/examiners; human resources, training, & labor relations specialists; management analysts</i>)</p> <p>03. Financial Specialists (<i>such as accountants, assessors, appraisers, financial & credit analysts/advisors, loan counselors/officers</i>)</p> <p>04. Computer Specialists (<i>such as computer & information scientists, programmers, software specialists, database & network administrators and analysts</i>)</p> <p>05. Mathematical Scientists and Technicians (<i>such as mathematicians, statisticians, actuaries & mathematical technicians</i>)</p> <p>06. Architects, Surveyors, and Cartographers</p> <p>07. Engineers and Related Technicians (<i>such as agricultural, civil, computer hardware, electrical, industrial, mechanical, materials & construction engineers & technicians</i>)</p> <p>08. Life and Physical Scientists and Technicians (<i>such as agricultural & food scientists, biologists, medical scientists, chemists, physicists, atmospheric & environmental scientists, and related technicians</i>)</p> <p>09. Social Scientists (<i>such as economists, psychologists, market & survey researchers, geographers, historians, sociologists, anthropologists, political scientists & urban planners</i>)</p> <p>10. Health: Doctors (<i>such as physicians & surgeons, dentists, veterinarians, optometrists, podiatrists, and chiropractors</i>)</p> <p>11. Health: Registered Nurses</p> <p>12. Health: Therapists (<i>such as occupational, physical, recreational, and speech therapists</i>)</p> <p>13. Health: Other Health Practitioners, Professionals, and Support Workers (<i>such as pharmacists, dieticians, physician assistants, and all other technicians/assistants/aides</i>)</p> <p>14. Community and Social Service (<i>such as counselors, social workers, community & religious workers, probation officers</i>)</p> <p>15. Legal: Attorneys/Judges</p> <p>16. Legal: Legal Support Workers</p> <p>17. Education : Early Childhood Teachers (<i>such as day care, pre-school, and kindergarten teachers</i>)</p> <p>18. Education: Elementary School Teachers</p> <p>19. Education: Middle School Teachers</p> <p>20. Education: Secondary School Teachers</p> | <p>21. Education: Special Education Teachers</p> <p>22. Education: Other, <u>except</u> Administrators (see #1) (<i>such as postsecondary teachers; vocational teachers; teaching & research assistants; other teachers, trainers, & assistants</i>)</p> <p>23. Library Occupations (<i>such as librarians, archivists, curators, and library technicians</i>)</p> <p>24. Arts and Design Workers (<i>such as designers and fine & craft artists</i>)</p> <p>25. Entertainers, Performers, Sports and Related Workers (<i>such as musicians, singers, dancers, actors, producers, directors, composers, athletes, coaches and referees</i>)</p> <p>26. Media and Communication Workers (<i>such as writers & editors, announcers, news analysts & reporters, public relations specialists, and media & communications equipment workers</i>)</p> <p>27. Sales (<i>such as real estate, retail, insurance & securities sales agents, wholesale & manufacturing sales representatives, telemarketers</i>)</p> <p>28. Office and Administration (<i>such as clerical & support personnel, clerks, tellers, distribution workers</i>)</p> <p>29. Protective Services (<i>such as firefighters, correctional officers, police, life guards, security guards, investigators</i>)</p> <p>30. Food Preparation and Serving (<i>such as cooks, bartenders, food service workers & servers</i>)</p> <p>31. Building and Grounds Cleaning and Maintenance (<i>such as janitors, cleaners, landscaping & groundskeeping laborers</i>)</p> <p>32. Personal Care and Services (<i>such as flight attendants, child care workers, hairstylists & personal care workers, recreation workers, hotel & travel industry workers</i>)</p> <p>33. Farming, Fishing, and Forestry (<i>such as farmworkers, animal care workers, foresters, loggers</i>)</p> <p>34. Construction and Extractive (<i>such as carpenters; electricians; painters, construction, oil & mining workers; plumbers</i>)</p> <p>35. Installation, Maintenance, and Repair (<i>such as telecommunications workers; auto repairers; heating, air conditioning, and refrigeration mechanics and installers</i>)</p> <p>36. Production (<i>such as electrical & electronic equipment assemblers; food, metal, plastic, printing, & photography industry technicians & workers</i>)</p> <p>37. Transportation and Material Moving (<i>such as pilots, drivers, air traffic controllers</i>)</p> <p>38. Military (<i>such as officers & enlisted personnel</i>)</p> |
|--|---|

Circle One

Industrial Categories

- | | | |
|---|---|--|
| <p>01 Agriculture, Forestry, and Fishing</p> <p>02 Mining</p> <p>03 Utilities</p> <p>04 Construction</p> <p>05 Manufacturing</p> <p>06 Wholesale Trade</p> <p>07 Retail Trade</p> <p>08 Transportation</p> <p>09 Information</p> | <p>10 Finance and Insurance</p> <p>11 Real Estate and Rental and Leasing</p> <p>12 Professional, Scientific and Technical Services</p> <p>13 Management of Companies and Enterprises</p> <p>14 Administrative and Support, Waste Management & Remediation Svcs</p> <p>15 Educational Services</p> | <p>16 Health Care and Social Assistance</p> <p>17 Arts, Entertainment and Recreation</p> <p>18 Accommodations and Food Services</p> <p>19 Other Services (except Public Administration)</p> <p>20 Public Administration</p> |
|---|---|--|

¹For some occupations, such as doctors, the occupation is not appropriate for students one year after earning a baccalaureate degree. This complete listing is also used for surveys of alumni five-years and nine-years after graduation.

II. Education

10. Have you enrolled in a college or university since earning your bachelor's degree?

- 1 Yes, full-time 2 Yes, part-time 3 No

If you have NOT enrolled in a college or university (response "3"), skip to *Section III*.

11. Are you pursuing (or have you completed) an additional degree since earning your bachelor's?

- 1 Yes 2 No (If your answer is "no," skip to *Section III*.)

If you are pursuing (or have completed) another degree, please indicate which degree below:

- | | |
|---|---|
| 01 Associate's | 06 Health Professional (dentistry, pharmacy, podiatry, optometry, etc.) |
| 02 Second Bachelor's | 07 Theology/Divinity |
| 03 Academic Master's (MA, MS, MEd, etc.) | 08 Law (LLB, JD) |
| 04 Professional Master's (MBA, MSW, MFA, MPA, etc.) or Education Specialist | 09 Doctorate (PhD, EdD, DA, DBA, etc.) |
| 05 Medicine (MD, DO) | 10 Other, please specify: _____ |

12. In general, how well did your bachelor's degree prepare you for your additional degree program?

- 1 Very well 2 Well 3 Adequately 4 Inadequately 5 Poorly 6 Very poorly

III. Satisfaction

13. What is your present attitude towards the University?

- 1 Strongly Positive 2 Positive 3 Somewhat Positive 4 Somewhat Negative 5 Negative 6 Strongly Negative

14. What is your present attitude towards your bachelor's degree major?

- 1 Strongly Positive 2 Positive 3 Somewhat Positive 4 Somewhat Negative 5 Negative 6 Strongly Negative

IV. Educational Practices: *The questions below will provide feedback to help the University improve undergraduate education. Please respond to each question by evaluating your program as a whole.*

In my major degree program, --	Very Often	Often	Sometimes	Infrequently	Never
15. professors were accessible outside of class.	1	2	3	4	5
16. I was expected or required to work cooperatively with other students on projects, homework, and assignments.	1	2	3	4	5
17. professors encouraged me to challenge my own ideas, the ideas of other students, and those presented in readings and other course materials.	1	2	3	4	5
18. professors used appropriate teaching activities to help me learn.	1	2	3	4	5
19. professors' expectations for the quality of student work was high.	1	2	3	4	5
20. professors provided me with timely feedback on my performance.	1	2	3	4	5
21. professors encouraged students' questions and discussion in class.	1	2	3	4	5
22. I spent the necessary time and energy to come to class prepared.	1	2	3	4	5

V. Program Quality

23. How would you rate the quality of your major degree program concerning the:

- A. Number of courses offered in your major for you to complete your program in a reasonable amount of time.
 B. Classes being offered at convenient times.
 C. Classes being offered in a logical sequence.

Excellent	Good	Fair	Poor
1	2	3	4
1	2	3	4
1	2	3	4

24. How would you rate the quality of the faculty in your major degree program:

- 1 2 3 4

25. Were the academic standards in grading students by faculty in your degree program:

- 1 Too High 2 About Right 3 Too Low

VI. Educational Effectiveness

26. Listed below are some abilities often mentioned as important for personal and professional success in the 21st century. In your view, how effective were your University experiences in —

	Extremely Helpful	Very Helpful	Moderately Helpful	Slightly Helpful	Not Helpful
A. helping you to better develop your critical thinking ability?	1	2	3	4	5
B. helping you to better develop your sense of ethics?	1	2	3	4	5
C. contributing to a greater understanding of people with different backgrounds, habits, values, appearances, and abilities?	1	2	3	4	5
D. helping you to become a more active citizen?	1	2	3	4	5
E. improving the quality of your life aside from financial benefits?	1	2	3	4	5
F. helping you to better develop your reasoning skills?	1	2	3	4	5
G. helping you to better develop your capacity to view problems from different perspectives?	1	2	3	4	5
H. helping you to better develop your ability to solve problems?	1	2	3	4	5
I. helping you to better develop your ability to make informed decisions as a citizen?	1	2	3	4	5
J. helping you to better develop your writing skills?	1	2	3	4	5
K. helping you to better develop your oral communication skills?	1	2	3	4	5
L. helping you to better develop your knowledge of scientific and technological developments?	1	2	3	4	5

27. My SIUE undergraduate education broadened my interest in issues beyond the subjects in my major.

1 Strongly Agree 2 Agree 3 Neutral 4 Disagree 5 Strongly Disagree

28. How important has your college education been to your —

	Very Important	Moderately Important	Slightly Important	Not Important
A. Personal Life	1	2	3	4
B. Community Life	1	2	3	4
C. Professional Life	1	2	3	4

29. How would you rate the quality of education that you received from SIUE relative to the education that your friends and colleagues have received from other colleges or universities?

1 Among the Best 2 Above Average 3 Average 4 Below Average 5 Among the worst

30. Please indicate your involvement with each of the following since completing your bachelor's degree:

	Currently Involved	Have Been Involved	Never Involved
A. Organized, formal learning that is career-related (non-degree)	1	2	3
B. Personal enrichment studies	1	2	3
C. Professional activities or organizations	1	2	3
D. Volunteer work / community service activities or organizations	1	2	3
E. Social/recreational activities or organizations	1	2	3
F. Political activities or organizations	1	2	3
G. Religious/ethical activities or organizations	1	2	3
H. Support or participation in the Arts (<i>music, drama, dance, art</i>)	1	2	3
I. Reading books not directly related to your job	1	2	3

SOUTHERN ILLINOIS UNIVERSITY EDWARDSVILLE

SURVEY OF 2009 BACCALAUREATE GRADUATES ONE YEAR AFTER GRADUATION

Most of the questions in this survey can be answered simply by circling the appropriate number. We hope you will give us your help and valuable input so that we can design programs that better serve the needs of SIUE students. PLEASE ANSWER THESE QUESTIONS ONLY IN REGARD TO THE SIUE UNDERGRADUATE DEGREE YOU RECEIVED LAST YEAR. Your individual responses to this questionnaire will be kept completely confidential. Thank you for your cooperation. Please return this survey in the envelope provided.

I. Employment

1. Are you currently employed (including self-employed)?

- 1 Yes, full-time 3 No, but am seeking employment
2 Yes, part-time 4 No, and am not seeking employment

If you are NOT employed (responses 3 and 4), skip to *Section II*.

2. What is the Zip Code of your place of employment (e.g., your actual workplace, not corporate headquarters)? _____

3. How would you classify your primary employer?

- | | |
|--|--|
| 1 Self-employed or private practice | 6 Health agency (e.g., hospital, clinic) |
| 2 Business (industrial, commercial or service) | 7 Federal, state, or local government |
| 3 Professional firm (e.g., engineering, law) | 8 Armed services |
| 4 College or university | 9 Non-profit (non-government) |
| 5 Elementary/secondary school (including cooperatives) | 10 Other (please specify) _____ |

4. How satisfied are you with your current job?

- 1 Very Satisfied 2 Satisfied 3 Somewhat Satisfied 4 Somewhat Dissatisfied 5 Dissatisfied 6 Very Dissatisfied

5. How closely related is your current job to your bachelor's degree major?

- 1 Closely Related 2 Related 3 Unrelated

If you marked "3" (unrelated), is this by choice?

- 1 Yes 2 No

6. When did you secure your first job following receipt of your bachelor's degree?

- 1 Held the same job while enrolled
2 Secured job by time of graduation
3 Secured job after graduation

If you marked "3," how many months after graduation did you secure employment?

- 1 Less than 1 month 3 Between 3 and 6 months 5 More than 9 months
2 Between 1 and 3 months 4 Between 6 and 9 months

7. What is your annual earned income before taxes in your current job? _____

8. In general, how well did your bachelor's degree prepare you for your present job?

- 1 Very Well 2 Well 3 Adequately 4 Inadequately 5 Poorly 6 Very poorly

9. Please circle on the lists below both your primary **occupation**¹ (what you do) and the **industry** in which you are employed (where you do it). Although some occupations typically work within one industry, they may be employed in other industries also. An example would be a school nurse — Health: Registered Nurses (11) in Educational Services (15). Examples of the types of occupations contained in each category are provided in italics.

Please write in your actual job title _____ (optional)

Circle One

Occupational Categories

- | | |
|--|---|
| <p>01. Management (<i>such as top executives; marketing, P.R., finance, human resources, administrative services, purchasing, & sales managers; educational administrators; health administrators</i>)</p> <p>02. Business Operations (<i>such as buyers & purchasing agents; insurance claims adjusters/examiners; human resources, training, & labor relations specialists; management analysts</i>)</p> <p>03. Financial Specialists (<i>such as accountants, assessors, appraisers, financial & credit analysts/advisors, loan counselors/officers</i>)</p> <p>04. Computer Specialists (<i>such as computer & information scientists, programmers, software specialists, database & network administrators and analysts</i>)</p> <p>05. Mathematical Scientists and Technicians (<i>such as mathematicians, statisticians, actuaries & mathematical technicians</i>)</p> <p>06. Architects, Surveyors, and Cartographers</p> <p>07. Engineers and Related Technicians (<i>such as agricultural, civil, computer hardware, electrical, industrial, mechanical, materials & construction engineers & technicians</i>)</p> <p>08. Life and Physical Scientists and Technicians (<i>such as agricultural & food scientists, biologists, medical scientists, chemists, physicists, atmospheric & environmental scientists, and related technicians</i>)</p> <p>09. Social Scientists (<i>such as economists, psychologists, market & survey researchers, geographers, historians, sociologists, anthropologists, political scientists & urban planners</i>)</p> <p>10. Health: Doctors (<i>such as physicians & surgeons, dentists, veterinarians, optometrists, podiatrists, and chiropractors</i>)</p> <p>11. Health: Registered Nurses</p> <p>12. Health: Therapists (<i>such as occupational, physical, recreational, and speech therapists</i>)</p> <p>13. Health: Other Health Practitioners, Professionals, and Support Workers (<i>such as pharmacists, dieticians, physician assistants, and all other technicians/assistants/aides</i>)</p> <p>14. Community and Social Service (<i>such as counselors, social workers, community & religious workers, probation officers</i>)</p> <p>15. Legal: Attorneys/Judges</p> <p>16. Legal: Legal Support Workers</p> <p>17. Education : Early Childhood Teachers (<i>such as day care, pre-school, and kindergarten teachers</i>)</p> <p>18. Education: Elementary School Teachers</p> <p>19. Education: Middle School Teachers</p> <p>20. Education: Secondary School Teachers</p> | <p>21. Education: Special Education Teachers</p> <p>22. Education: Other, <u>except</u> Administrators (see #1) (<i>such as postsecondary teachers; vocational teachers; teaching & research assistants; other teachers, trainers, & assistants</i>)</p> <p>23. Library Occupations (<i>such as librarians, archivists, curators, and library technicians</i>)</p> <p>24. Arts and Design Workers (<i>such as designers and fine & craft artists</i>)</p> <p>25. Entertainers, Performers, Sports and Related Workers (<i>such as musicians, singers, dancers, actors, producers, directors, composers, athletes, coaches and referees</i>)</p> <p>26. Media and Communication Workers (<i>such as writers & editors, announcers, news analysts & reporters, public relations specialists, and media & communications equipment workers</i>)</p> <p>27. Sales (<i>such as real estate, retail, insurance & securities sales agents, wholesale & manufacturing sales representatives, telemarketers</i>)</p> <p>28. Office and Administration (<i>such as clerical & support personnel, clerks, tellers, distribution workers</i>)</p> <p>29. Protective Services (<i>such as firefighters, correctional officers, police, life guards, security guards, investigators</i>)</p> <p>30. Food Preparation and Serving (<i>such as cooks, bartenders, food service workers & servers</i>)</p> <p>31. Building and Grounds Cleaning and Maintenance (<i>such as janitors, cleaners, landscaping & groundskeeping laborers</i>)</p> <p>32. Personal Care and Services (<i>such as flight attendants, child care workers, hairstylists & personal care workers, recreation workers, hotel & travel industry workers</i>)</p> <p>33. Farming, Fishing, and Forestry (<i>such as farmworkers, animal care workers, foresters, loggers</i>)</p> <p>34. Construction and Extractive (<i>such as carpenters; electricians; painters, construction, oil & mining workers; plumbers</i>)</p> <p>35. Installation, Maintenance, and Repair (<i>such as telecommunications workers; auto repairers; heating, air conditioning, and refrigeration mechanics and installers</i>)</p> <p>36. Production (<i>such as electrical & electronic equipment assemblers; food, metal, plastic, printing, & photography industry technicians & workers</i>)</p> <p>37. Transportation and Material Moving (<i>such as pilots, drivers, air traffic controllers</i>)</p> <p>38. Military (<i>such as officers & enlisted personnel</i>)</p> |
|--|---|

Circle One

Industrial Categories

- | | | |
|---|---|--|
| <p>01 Agriculture, Forestry, and Fishing</p> <p>02 Mining</p> <p>03 Utilities</p> <p>04 Construction</p> <p>05 Manufacturing</p> <p>06 Wholesale Trade</p> <p>07 Retail Trade</p> <p>08 Transportation</p> <p>09 Information</p> | <p>10 Finance and Insurance</p> <p>11 Real Estate and Rental and Leasing</p> <p>12 Professional, Scientific and Technical Services</p> <p>13 Management of Companies and Enterprises</p> <p>14 Administrative and Support, Waste Management & Remediation Svcs</p> <p>15 Educational Services</p> | <p>16 Health Care and Social Assistance</p> <p>17 Arts, Entertainment and Recreation</p> <p>18 Accommodations and Food Services</p> <p>19 Other Services (except Public Administration)</p> <p>20 Public Administration</p> |
|---|---|--|

¹For some occupations, such as doctors, the occupation is not appropriate for students one year after earning a baccalaureate degree. This complete listing is also used for surveys of alumni five-years and nine-years after graduation.

II. Education

10. Have you enrolled in a college or university since earning your bachelor's degree?

- 1 Yes, full-time 2 Yes, part-time 3 No

If you have NOT enrolled in a college or university (response "3"), skip to *Section III*.

11. Are you pursuing (or have you completed) an additional degree since earning your bachelor's?

- 1 Yes 2 No (If your answer is "no," skip to *Section III*.)

If you are pursuing (or have completed) another degree, please indicate which degree below:

- | | |
|---|---|
| 01 Associate's | 06 Health Professional (dentistry, pharmacy, podiatry, optometry, etc.) |
| 02 Second Bachelor's | 07 Theology/Divinity |
| 03 Academic Master's (MA, MS, MEd, etc.) | 08 Law (LLB, JD) |
| 04 Professional Master's (MBA, MSW, MFA, MPA, etc.) or Education Specialist | 09 Doctorate (PhD, EdD, DA, DBA, etc.) |
| 05 Medicine (MD, DO) | 10 Other, please specify: _____ |

12. In general, how well did your bachelor's degree prepare you for your additional degree program?

- 1 Very well 2 Well 3 Adequately 4 Inadequately 5 Poorly 6 Very poorly

III. Satisfaction

13. What is your present attitude towards the University?

- 1 Strongly Positive 2 Positive 3 Somewhat Positive 4 Somewhat Negative 5 Negative 6 Strongly Negative

14. What is your present attitude towards your bachelor's degree major?

- 1 Strongly Positive 2 Positive 3 Somewhat Positive 4 Somewhat Negative 5 Negative 6 Strongly Negative

IV. Educational Practices: *The questions below will provide feedback to help the University improve undergraduate education. Please respond to each question by evaluating your program as a whole.*

In my major degree program, --	Very Often	Often	Sometimes	Infrequently	Never
15. professors were accessible outside of class.	1	2	3	4	5
16. I was expected or required to work cooperatively with other students on projects, homework, and assignments.	1	2	3	4	5
17. professors encouraged me to challenge my own ideas, the ideas of other students, and those presented in readings and other course materials.	1	2	3	4	5
18. professors used appropriate teaching activities to help me learn.	1	2	3	4	5
19. professors' expectations for the quality of student work was high.	1	2	3	4	5
20. professors provided me with timely feedback on my performance.	1	2	3	4	5
21. professors encouraged students' questions and discussion in class.	1	2	3	4	5
22. I spent the necessary time and energy to come to class prepared.	1	2	3	4	5

V. Program Quality

23. How would you rate the quality of your major degree program concerning the:

	Excellent	Good	Fair	Poor
A. Number of courses offered in your major for you to complete your program in a reasonable amount of time.	1	2	3	4
B. Classes being offered at convenient times.	1	2	3	4
C. Classes being offered in a logical sequence.	1	2	3	4

24. How would you rate the quality of the faculty in your major degree program:

- 1 2 3 4

25. Were the academic standards in grading students by faculty in your degree program:

- 1 Too High 2 About Right 3 Too Low

VI. Educational Effectiveness

26. Listed below are some abilities often mentioned as important for personal and professional success in the 21st century. In your view, how effective were your University experiences in —

	Extremely Helpful	Very Helpful	Moderately Helpful	Slightly Helpful	Not Helpful
A. helping you to better develop your critical thinking ability?	1	2	3	4	5
B. helping you to better develop your sense of ethics?	1	2	3	4	5
C. contributing to a greater understanding of people with different backgrounds, habits, values, appearances, and abilities?	1	2	3	4	5
D. helping you to become a more active citizen?	1	2	3	4	5
E. improving the quality of your life aside from financial benefits?	1	2	3	4	5
F. helping you to better develop your reasoning skills?	1	2	3	4	5
G. helping you to better develop your capacity to view problems from different perspectives?	1	2	3	4	5
H. helping you to better develop your ability to solve problems?	1	2	3	4	5
I. helping you to better develop your ability to make informed decisions as a citizen?	1	2	3	4	5
J. helping you to better develop your writing skills?	1	2	3	4	5
K. helping you to better develop your oral communication skills?	1	2	3	4	5
L. helping you to better develop your knowledge of scientific and technological developments?	1	2	3	4	5

27. My SIUE undergraduate education broadened my interest in issues beyond the subjects in my major.

1 Strongly Agree 2 Agree 3 Neutral 4 Disagree 5 Strongly Disagree

28. How important has your college education been to your —

	Very Important	Moderately Important	Slightly Important	Not Important
A. Personal Life	1	2	3	4
B. Community Life	1	2	3	4
C. Professional Life	1	2	3	4

29. How would you rate the quality of education that you received from SIUE relative to the education that your friends and colleagues have received from other colleges or universities?

1 Among the Best 2 Above Average 3 Average 4 Below Average 5 Among the worst

30. Please indicate your involvement with each of the following since completing your bachelor's degree:

	Currently Involved	Have Been Involved	Never Involved
A. Organized, formal learning that is career-related (non-degree)	1	2	3
B. Personal enrichment studies	1	2	3
C. Professional activities or organizations	1	2	3
D. Volunteer work / community service activities or organizations	1	2	3
E. Social/recreational activities or organizations	1	2	3
F. Political activities or organizations	1	2	3
G. Religious/ethical activities or organizations	1	2	3
H. Support or participation in the Arts (<i>music, drama, dance, art</i>)	1	2	3
I. Reading books not directly related to your job	1	2	3