

Southern Illinois University at Edwardsville
Survey of 2013 Baccalaureate Graduates -- One Year Out

Survey Results for Schools

April 2015

Survey Administered By
The Office of Undergraduate Assessment and Program Review

Survey Results Compiled By
The Office of Institutional Research and Studies

Southern Illinois University at Edwardsville

Survey of 2013 Baccalaureate Graduates -- One Year Out

Contents

Introduction

Methodology

Survey Population and Respondents

- Charts: *2013 Baccalaureate Recipients, Profile*
- \$ *Gender*
 - \$ *Race/Ethnic*
 - \$ *Age at Graduation*
 - \$ *Matriculation Status*
 - \$ *Time to Degree for New Freshmen*
 - \$ *Time to Degree for New Transfers*

- Table: *Comparison of All Graduates to Survey Respondents*

Survey Results

- Charts: *2013 Baccalaureate Graduates One Year Out, Satisfaction*
- \$ *Present Attitude Toward the University*
 - \$ *Present Attitude Towards Alumni Bachelor's Degree Major*
 - \$ *Quality of SIUE Education Relative to That of Friends at Other Schools*

- 2013 Baccalaureate Graduates One Year Out, Additional Education*
- \$ *Enrolled Since Bachelors Degree*
 - \$ *How Well Bachelor's Degree Prepared Alumni for Additional Degree*

- 2013 Baccalaureate Graduates One Year Out, Employment*
- \$ *Employment Status*
 - \$ *Place of Employment*
 - \$ *Job Relation to Major*
 - \$ *Job Satisfaction*
 - \$ *How Well Bachelor's Degree Program Prepared Alumni for Present Job*
 - \$ *Mean Salary of Alumni Employed Full Time*

- Helpfulness of University Experiences in:*
- \$ *Developing Critical Thinking Ability*
 - \$ *Developing Sense of Ethics*
 - \$ *Understanding People with Different Backgrounds*
 - \$ *Becoming a more Active Citizen*
 - \$ *Improving Quality of Life (aside from financial benefits)*
 - \$ *Developing Reasoning Skills*
 - \$ *Viewing Problems from Different Perspectives*
 - \$ *Developing Ability to Solve Problems*
 - \$ *Making Informed Decisions as a Citizen*

- \$ Developing Writing Skills*
- \$ Developing Oral Communication Skills*
- \$ Developing Knowledge of Scientific and Technological Developments*

Tables:

<i>Part I</i>	<i>Employment Questions</i>
<i>Part II</i>	<i>Education Questions</i>
<i>Part III</i>	<i>Satisfaction Questions</i>
<i>Part IV</i>	<i>Educational Practices Questions</i>
<i>Part V</i>	<i>Program Quality Questions</i>
<i>Part VI</i>	<i>Educational Effectiveness Questions</i>

Questionnaire

Southern Illinois University Edwardsville Survey of 2013 Baccalaureate Graduates -- One Year Out

Introduction

This one-year out baccalaureate survey was done to provide data for the University's undergraduate program reviews and other planning uses.

After the first six years, the surveys were reviewed and changed, modifying some questions and value scales, and adding some additional questions.

The current survey was administered during the Spring and Fall of 2014 to calendar year 2013 baccalaureate graduates of SIUE. The questionnaire includes 30 questions separated in six themed parts - Employment, Education, Satisfaction, Educational Practices, Program Quality, and Educational Effectiveness Questions. The sixth section of the survey includes space for any comment the survey participant wishes to leave. See Appendix A for a survey form

Methodology

The survey questionnaire and a cover letter were adapted from the questionnaire and letter developed for previous surveys. SIUE Alumni Services provided current addresses for calendar year 2013 graduates as determined from institutional records. The survey was distributed in April and May 2014 to May 2013 baccalaureate graduates and in October and December 2014 to August 2013 and December 2013 baccalaureate graduates. Each envelope included a cover letter, a questionnaire, and a postage-paid, pre-addressed return envelope. Each questionnaire was stamped with a sequential, identifying number which was also stamped on a listing of the graduates (this aided in identifying the surveys when returned).

Surveys were mailed first class to the 1,231 May 2013 baccalaureate graduates, for whom addresses were available on April 2, 2014. On May 2, a second wave mailing of the surveys was sent to the 1,102 remaining non-respondents.

The second distribution began on October 31, 2014 to the 921 August and December 2013 baccalaureate graduates with known addresses. Surveys were mailed first class to this group as well. A second wave mailing of the survey was sent to 750 non-responders on December 3, 2014.

Returned surveys began arriving in mid-April and continued through the summer and fall, with a few arriving as late as the end of February 2015. As the surveys came in, each was matched with the corresponding stamped listing. The students' names were then checked against the alphabetic list of alumni to verify (or, if the alumnus chose not to provide the identification number, to obtain) the student identification number. The student identification number was the key which allowed merging of survey data with administrative records (e.g., biographic, graduation, matriculation, and enrollment information).

Southern Illinois University Edwardsville
Survey of 2013 Baccalaureate Graduates -- One Year Out

Survey Population and Respondents

	Number of Graduates
2013 Baccalaureate Degrees	2,219
Less persons who received 2 baccalaureate degrees	23
2013 Baccalaureate Graduates	2,196
Less Graduates with No Address Available *	44
Graduates Surveyed	2,152
Less Non-Deliverable Surveys	88
Less Non-Responding Graduates	1,656
Survey Respondents	408
Gross Response Rate (Respondents/Total Surveyed)	18.96%
Adjusted Response Rate (Respondents/Delivered Surveys)	19.77%

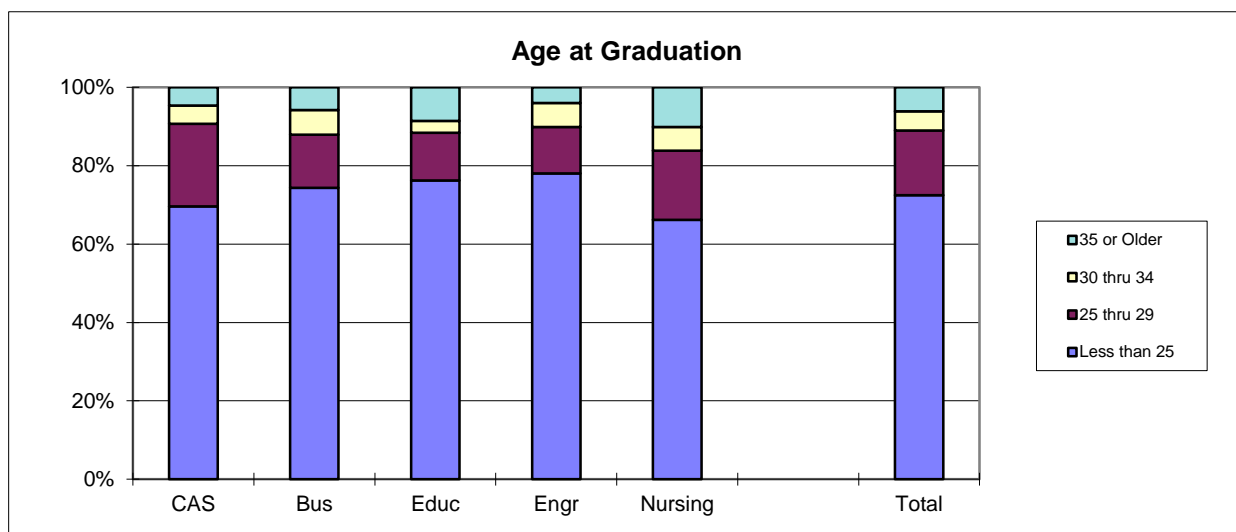
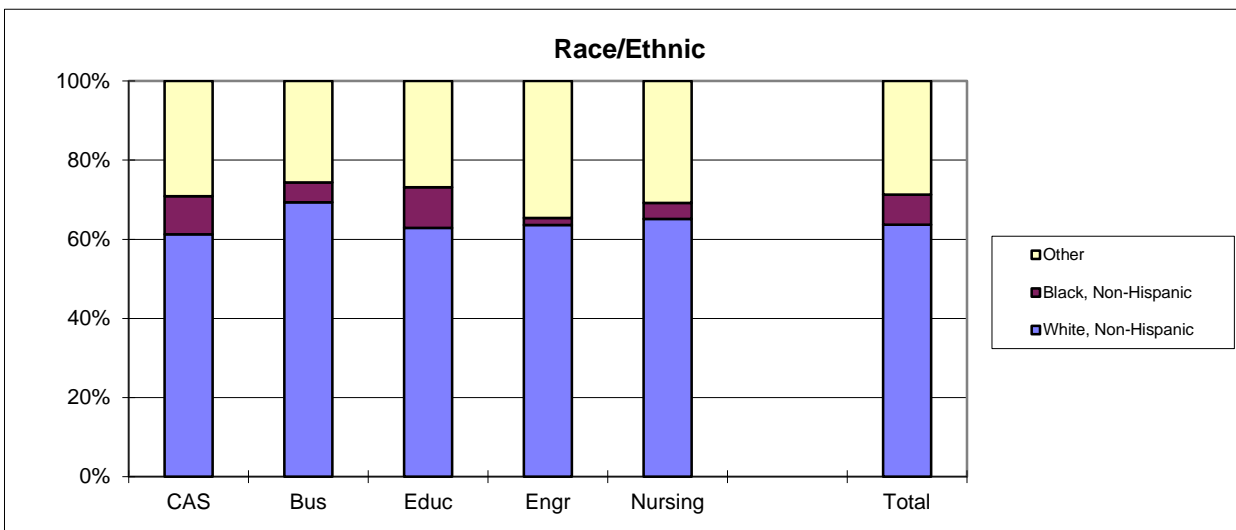
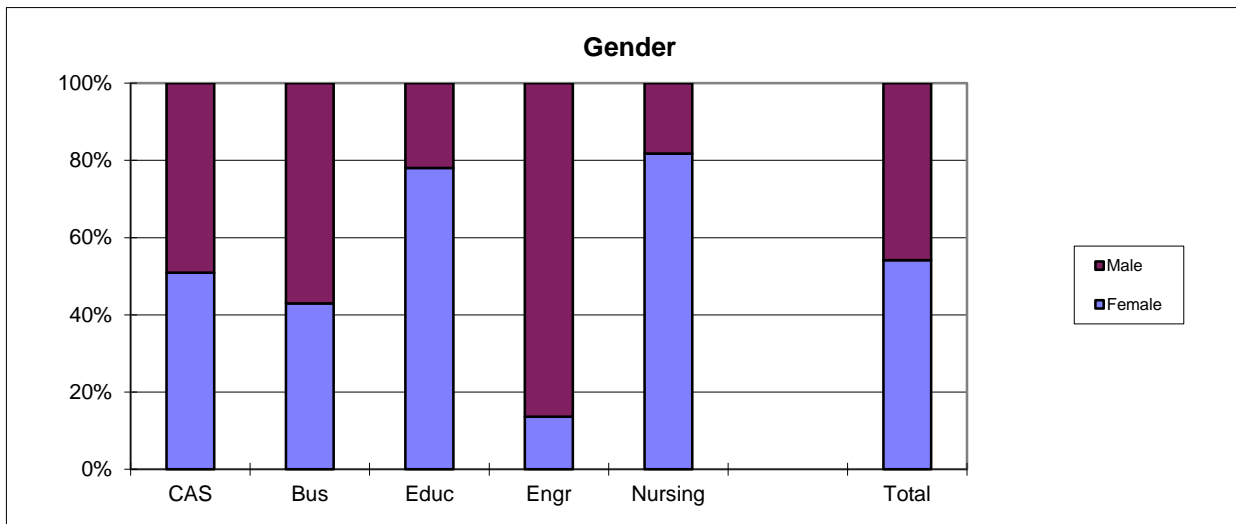
* Includes deceased alumni, foreign addresses and known bad addresses.

Southern Illinois University Edwardsville
Survey of 2013 Baccalaureate Graduates -- One Year Out

Comparison of All Graduates to Survey Respondents

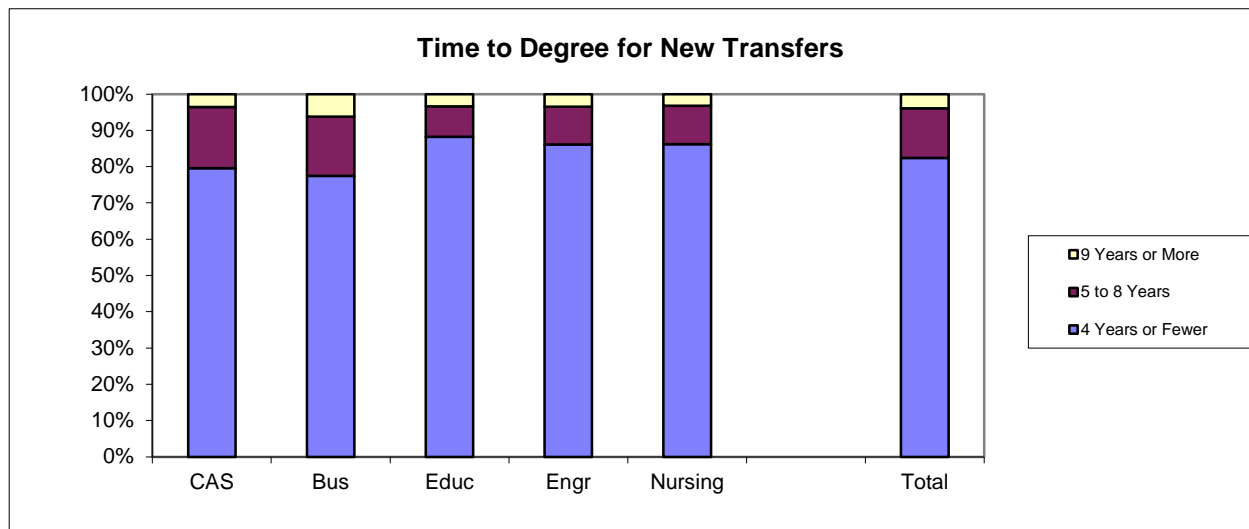
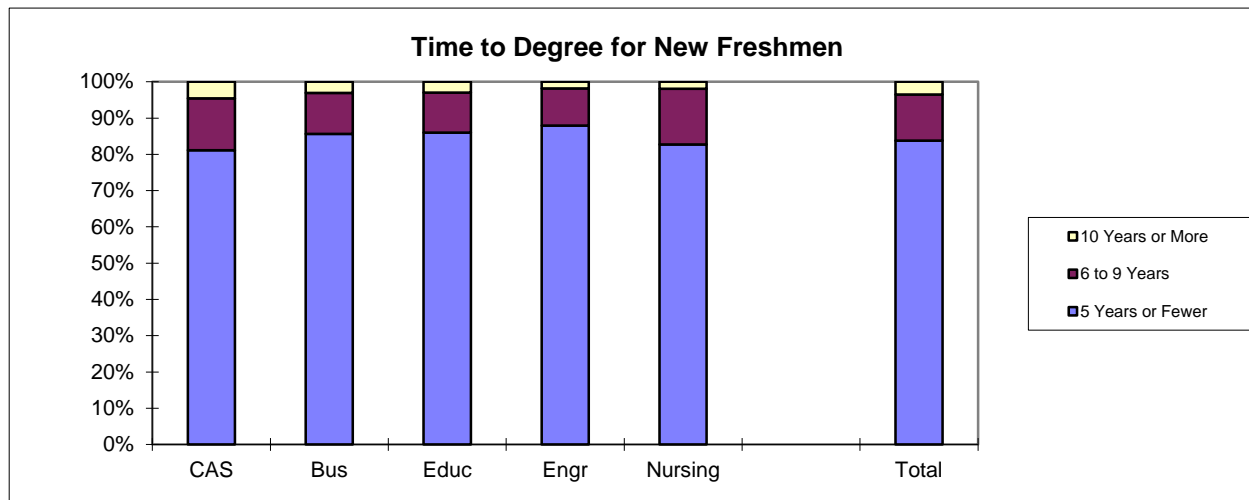
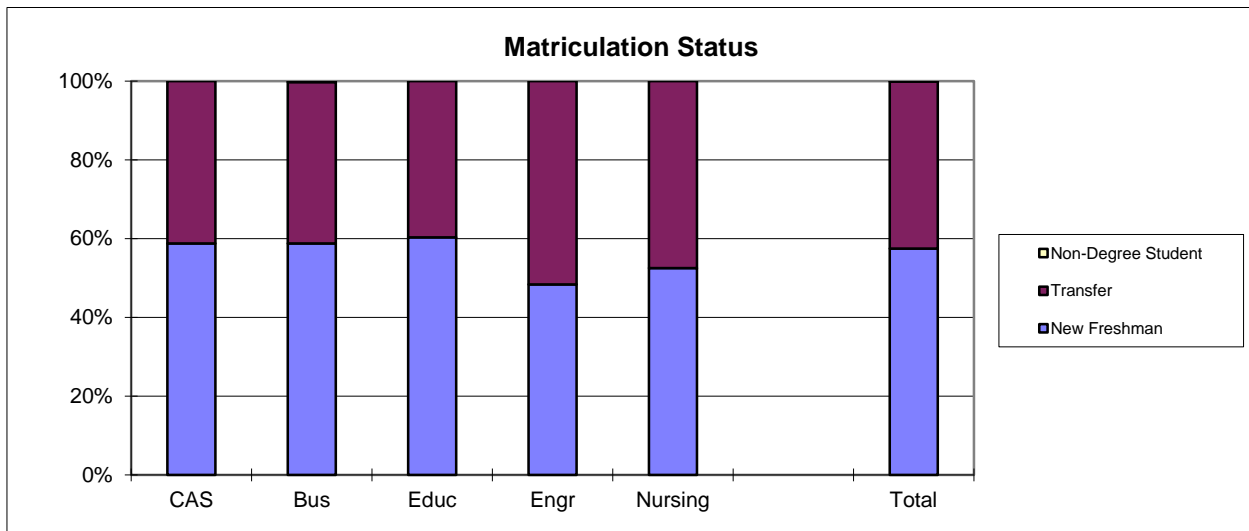
	All Baccalaureate Graduates		One Year Out Survey Respondents	
	Number	Percent	Number	Percent
Total	2196	100.0%	408	100.0%
Female	1190	54.2%	261	64.0%
Male	1006	45.8%	147	36.0%
Missing Data	0	0.0%	0	0.0%
White, Non-Hispanic	1398	63.7%	290	71.1%
Black, Non-Hispanic	167	7.6%	18	4.4%
Asian/Pacific Islander	34	1.5%	10	2.5%
American Indian/Alaskan Native	2	0.1%	0	0.0%
Hispanic	42	1.9%	8	2.0%
Non-Resident Alien	38	1.7%	0	0.0%
Missing Data	515	23.5%	82	20.1%
Age at Graduation	range = 19 to 61 median = 23		range = 19 to 61 median = 23	
Bachelor of Science	1683	76.6%	318	77.9%
Bachelor of Music	21	1.0%	3	0.7%
Bachelor of Arts	323	14.7%	46	11.3%
Bachelor of Fine Arts	23	1.0%	1	0.2%
Bachelor of Sci in Accountancy	102	4.6%	31	7.6%
Bachelor of Liberal Studies	1	0.0%	0	0.0%
Bachelor of Social Work	43	2.0%	9	2.2%
Missing Data	0	0.0%	0	0.0%
Graduated Spring 2013	1260	57.4%	259	63.5%
Graduated Summer 2013	319	14.5%	37	9.1%
Graduated Fall 2013	617	28.1%	112	27.5%
Missing Data	0	0.0%	0	0.0%
Degree From College of Arts and Sciences	903	41.1%	144	35.3%
Degree From School of Business	398	18.1%	89	21.8%
Degree from School of Education	469	21.4%	83	20.3%
Degree from School of Engineering	228	10.4%	36	8.8%
Degree from School of Nursing	198	9.0%	56	13.7%
Missing Data	0	0.0%	0	0.0%
Matriculated as a New Freshman	1237	56.3%	243	59.6%
Matriculated as a Transfer	914	41.6%	155	38.0%
Matriculated as a Non-Degree Student	1	0.0%	0	0.0%
Missing Data	44	2.0%	10	2.5%
Time to Degree for New Freshmen				
3 Years or Fewer	75	6.1%	20	8.2%
4 Years	660	53.4%	141	58.0%
5 Years	301	24.3%	49	20.2%
6 Years	87	7.0%	13	5.3%
7 Years	33	2.7%	8	3.3%
8 Years	21	1.7%	1	0.4%
9 Years	17	1.4%	3	1.2%
10 Years	6	0.5%	1	0.4%
11 Years or More	37	3.0%	7	2.9%
Missing Data	0	0.0%	0	0.0%
Time to Degree for Transfers				
2 or Fewer Years	273	29.9%	46	29.7%
3 Years	345	37.7%	64	41.3%
4 Years	135	14.8%	17	11.0%
5 Years	53	5.8%	8	5.2%
6 Years	37	4.0%	10	6.5%
7 Years	21	2.3%	2	1.3%
8 Years	14	1.5%	3	1.9%
9 Years	9	1.0%	0	0.0%
10 Years or More	27	3.0%	5	3.2%
Missing Data	0	0.0%	0	0.0%
Graduating GPA (4 point scale)	Mean = 3.216 Std Dev = 0.428 Maximum = 4.000 Minimum = 2.016 N = 2195		Mean = 3.281 Std Dev = 0.432 Maximum = 4.000 Minimum = 2.027 N = 408	
4/29/2015				

2013 Baccalaureate Recipients Profile



2013 Baccalaureate Recipients

Profile, cont.



Southern Illinois University Edwardsville
Survey of 2013 Baccalaureate Graduates -- One Year Out

Comparison of All Graduates to Survey Respondents

School Detail		All Graduates					Total
		CAS	BUS	EDU	ENG	NUR	
Total		903	398	469	228	198	2196
Female		50.9%	43.0%	78.0%	13.6%	81.8%	54.2%
Male		49.1%	57.0%	22.0%	86.4%	18.2%	45.8%
Missing Data		0.0%	0.0%	0.0%	0.0%	0.0%	0.0%
White, Non-Hispanic		61.2%	69.3%	62.9%	63.6%	65.2%	63.7%
Black, Non-Hispanic		9.6%	5.0%	10.2%	1.8%	4.0%	7.6%
Asian/Pacific Islander		1.1%	2.3%	1.5%	0.4%	3.5%	1.5%
American Indian/Alaskan Native		0.2%	0.0%	0.0%	0.0%	0.0%	0.1%
Hispanic		2.2%	1.8%	1.7%	1.8%	1.5%	1.9%
Non-Resident Alien		0.3%	0.5%	0.0%	13.6%	1.0%	1.7%
Missing Data		25.2%	21.1%	23.7%	18.9%	24.7%	23.5%
Age at Graduation		19 to 58	19 to 61	20 to 59	21 to 50	21 to 55	19 to 61
range							
median		23.0	23.0	23.0	23.0	23.0	23.0
Bachelor of Science		61.0%	74.4%	88.9%	96.9%	100.0%	76.6%
Bachelor of Music		2.3%	0.0%	0.0%	0.0%	0.0%	1.0%
Bachelor of Arts		29.2%	0.0%	11.1%	3.1%	0.0%	14.7%
Bachelor of Fine Arts		2.5%	0.0%	0.0%	0.0%	0.0%	1.0%
Bachelor of Sci in Accountancy		0.0%	25.6%	0.0%	0.0%	0.0%	4.6%
Bachelor of Liberal Studies		0.1%	0.0%	0.0%	0.0%	0.0%	0.0%
Bachelor of Social Work		4.8%	0.0%	0.0%	0.0%	0.0%	2.0%
Missing Data		0.0%	0.0%	0.0%	0.0%	0.0%	0.0%
Graduated Spring 2013		58.7%	49.0%	62.3%	55.3%	59.1%	57.4%
Graduated Summer 2013		16.2%	20.6%	14.1%	9.6%	1.5%	14.5%
Graduated Fall 2013		25.1%	30.4%	23.7%	35.1%	39.4%	28.1%
Missing Data		0.0%	0.0%	0.0%	0.0%	0.0%	0.0%
Matriculated as a New Freshman		58.0%	57.8%	57.8%	47.4%	52.5%	56.3%
Matriculated as a Transfer		40.6%	40.2%	38.0%	50.4%	47.5%	41.6%
Matriculated as a Non-Degree Student		0.0%	0.3%	0.0%	0.0%	0.0%	0.0%
Missing Data		1.3%	1.8%	4.3%	2.2%	0.0%	2.0%
Time to Degree for New Freshmen							
3 Years or Fewer		6.3%	10.0%	7.0%	0.0%	0.0%	6.1%
4 Years		52.1%	53.9%	51.3%	60.2%	56.7%	53.4%
5 Years		22.7%	21.7%	27.7%	27.8%	26.0%	24.3%
6 Years		7.1%	5.7%	7.4%	9.3%	6.7%	7.0%
7 Years		4.0%	2.2%	1.1%	0.0%	3.8%	2.7%
8 Years		1.7%	2.2%	1.5%	0.0%	2.9%	1.7%
9 Years		1.5%	1.3%	1.1%	0.9%	1.9%	1.4%
10 Years		0.4%	0.9%	0.7%	0.0%	0.0%	0.5%
11 Years or More		4.2%	2.2%	2.2%	1.9%	1.9%	3.0%
Missing Data		0.0%	0.0%	0.0%	0.0%	0.0%	0.0%
Time to Degree for Transfers							
2 or Fewer Years		30.0%	31.9%	36.5%	14.8%	31.9%	29.9%
3 Years		34.9%	33.1%	37.1%	57.4%	34.0%	37.7%
4 Years		14.7%	12.5%	14.6%	13.9%	20.2%	14.8%
5 Years		6.3%	5.6%	3.9%	7.0%	6.4%	5.8%
6 Years		5.4%	5.6%	1.7%	1.7%	3.2%	4.0%
7 Years		3.3%	3.8%	0.6%	0.9%	1.1%	2.3%
8 Years		1.9%	1.3%	2.2%	0.9%	0.0%	1.5%
9 Years		1.4%	1.3%	0.0%	0.9%	1.1%	1.0%
10 Years or More		2.2%	5.0%	3.4%	2.6%	2.1%	3.0%
Missing Data		0.0%	0.0%	0.0%	0.0%	0.0%	0.0%
Graduating GPA (4 point scale)							
Mean		3.194	3.131	3.369	3.067	3.293	3.216
Std Dev		0.456	0.406	0.385	0.389	0.351	0.428

Southern Illinois University Edwardsville
Survey of 2013 Baccalaureate Graduates -- One Year Out

Comparison of All Graduates to Survey Respondents, cont.

School Detail		All One Year Out Survey Respondents					Total
		CAS	BUS	EDU	ENG	NUR	
Total		144	89	83	36	56	408
Female		63.9%	55.1%	80.7%	13.9%	85.7%	64.0%
Male		36.1%	44.9%	19.3%	86.1%	14.3%	36.0%
Missing Data		0.0%	0.0%	0.0%	0.0%	0.0%	0.0%
White, Non-Hispanic		63.2%	77.5%	69.9%	80.6%	76.8%	71.1%
Black, Non-Hispanic		9.7%	1.1%	3.6%	0.0%	0.0%	4.4%
Asian/Pacific Islander		2.1%	1.1%	4.8%	0.0%	3.6%	2.5%
American Indian/Alaskan Native		0.0%	0.0%	0.0%	0.0%	0.0%	0.0%
Hispanic		2.1%	3.4%	1.2%	0.0%	1.8%	2.0%
Non-Resident Alien		0.0%	0.0%	0.0%	0.0%	0.0%	0.0%
Missing Data		22.9%	16.9%	20.5%	19.4%	17.9%	20.1%
Age at Graduation		19 to 58	20 to 61	21 to 55	21 to 50	21 to 55	19 to 61
range							
median		23.0	22.0	23.0	22.5	23.0	23.0
Bachelor of Science		66.7%	65.2%	88.0%	97.2%	100.0%	77.9%
Bachelor of Music		2.1%	0.0%	0.0%	0.0%	0.0%	0.7%
Bachelor of Arts		24.3%	0.0%	12.0%	2.8%	0.0%	11.3%
Bachelor of Fine Arts		0.7%	0.0%	0.0%	0.0%	0.0%	0.2%
Bachelor of Sci in Accountancy		0.0%	34.8%	0.0%	0.0%	0.0%	7.6%
Bachelor of Liberal Studies		0.0%	0.0%	0.0%	0.0%	0.0%	0.0%
Bachelor of Social Work		6.3%	0.0%	0.0%	0.0%	0.0%	2.2%
Missing Data		0.0%	0.0%	0.0%	0.0%	0.0%	0.0%
Graduated Spring 2013		63.9%	56.2%	71.1%	50.0%	71.4%	63.5%
Graduated Summer 2013		13.9%	13.5%	4.8%	2.8%	0.0%	9.1%
Graduated Fall 2013		22.2%	30.3%	24.1%	47.2%	28.6%	27.5%
Missing Data		0.0%	0.0%	0.0%	0.0%	0.0%	0.0%
Matriculated as a New Freshman		59.0%	61.8%	55.4%	63.9%	60.7%	59.6%
Matriculated as a Transfer		38.2%	36.0%	41.0%	33.3%	39.3%	38.0%
Matriculated as a Non-Degree Student		0.0%	0.0%	0.0%	0.0%	0.0%	0.0%
Missing Data		2.8%	2.2%	3.6%	2.8%	0.0%	2.5%
Time to Degree for New Freshmen							
3 Years or Fewer		8.2%	14.5%	10.9%	0.0%	0.0%	8.2%
4 Years		57.6%	49.1%	56.5%	69.6%	67.6%	58.0%
5 Years		18.8%	18.2%	21.7%	21.7%	23.5%	20.2%
6 Years		4.7%	7.3%	4.3%	8.7%	2.9%	5.3%
7 Years		3.5%	5.5%	2.2%	0.0%	2.9%	3.3%
8 Years		0.0%	1.8%	0.0%	0.0%	0.0%	0.4%
9 Years		2.4%	0.0%	2.2%	0.0%	0.0%	1.2%
10 Years		0.0%	1.8%	0.0%	0.0%	0.0%	0.4%
11 Years or More		4.7%	1.8%	2.2%	0.0%	2.9%	2.9%
Missing Data		0.0%	0.0%	0.0%	0.0%	0.0%	0.0%
Time to Degree for Transfers							
2 or Fewer Years		32.7%	37.5%	29.4%	16.7%	18.2%	29.7%
3 Years		38.2%	43.8%	44.1%	58.3%	31.8%	41.3%
4 Years		7.3%	3.1%	17.6%	8.3%	22.7%	11.0%
5 Years		3.6%	6.3%	2.9%	8.3%	9.1%	5.2%
6 Years		10.9%	6.3%	0.0%	0.0%	9.1%	6.5%
7 Years		3.6%	0.0%	0.0%	0.0%	0.0%	1.3%
8 Years		1.8%	3.1%	2.9%	0.0%	0.0%	1.9%
9 Years		0.0%	0.0%	0.0%	0.0%	0.0%	0.0%
10 Years or More		1.8%	0.0%	2.9%	8.3%	9.1%	3.2%
Missing Data		0.0%	0.0%	0.0%	0.0%	0.0%	0.0%
Graduating GPA (4 point scale)							
Mean		3.245	3.261	3.397	3.117	3.340	3.281
Std Dev		0.473	0.414	0.410	0.444	0.320	0.432

Southern Illinois University Edwardsville
Survey of 2013 Baccalaureate Graduates -- One Year Out
Survey Responses -- Part I
Employment Questions

School Detail	CAS	BUS	EDU	ENG	NUR	Total
Number of Survey Respondents *	144	89	83	36	56	408
1. Number Employed:						
Full-time	66.2%	88.8%	60.2%	97.2%	94.6%	76.6%
Part-time	19.0%	7.9%	18.1%	0.0%	3.6%	12.6%
Not, but Seeking	4.9%	2.2%	7.2%	2.8%	1.8%	4.2%
Not, not Seeking	9.9%	1.1%	14.5%	0.0%	0.0%	6.7%
Number Responding	142	89	83	36	56	406
The remaining questions in Part I were to be answered only by respondents who were employed full-time or part-time.						
	121	86	65	35	55	362
2. Place of Employment						
Illinois	57.6%	47.0%	79.0%	65.7%	65.2%	60.8%
Missouri	34.7%	50.6%	11.3%	25.7%	21.7%	31.7%
Other	7.6%	2.4%	9.7%	8.6%	13.0%	7.6%
Number Responding	118	83	62	35	46	344
3. Classification of Primary Employer						
Self-Employed or Private Practice	2.5%	0.0%	4.6%	0.0%	0.0%	1.7%
Business (Industrial, Commercial or Service)	39.7%	69.8%	18.5%	54.3%	0.0%	38.4%
Professional Firm (e.g., Engineering, Law)	8.3%	15.1%	1.5%	40.0%	0.0%	10.5%
College or University	6.6%	3.5%	12.3%	0.0%	0.0%	5.2%
Elementary/Secondary School	10.7%	0.0%	36.9%	0.0%	0.0%	10.2%
Health Agency (e.g. Hospital, Clinic)	8.3%	3.5%	9.2%	0.0%	94.5%	19.6%
Federal, State, or Local Government	12.4%	3.5%	3.1%	2.9%	1.8%	6.1%
Armed Services	0.0%	0.0%	0.0%	0.0%	1.8%	0.3%
NonProfit (Non-Government)	6.6%	0.0%	9.2%	0.0%	0.0%	3.9%
Other	5.0%	4.7%	4.6%	2.9%	1.8%	4.1%
Number Responding	121	86	65	35	55	362
4. Job Satisfaction						
Very Satisfied	36.4%	41.2%	23.1%	42.9%	30.9%	34.9%
Satisfied	28.9%	31.8%	35.4%	45.7%	52.7%	36.0%
Somewhat Satisfied	18.2%	15.3%	26.2%	8.6%	9.1%	16.6%
Somewhat Dissatisfied	5.8%	4.7%	7.7%	2.9%	5.5%	5.5%
Dissatisfied	8.3%	3.5%	6.2%	0.0%	1.8%	5.0%
Very Dissatisfied	2.5%	3.5%	1.5%	0.0%	0.0%	1.9%
Number Responding	121	85	65	35	55	361
5. Job in Field?						
Closely Related	33.9%	47.7%	53.8%	80.0%	96.4%	54.7%
Related	28.9%	38.4%	15.4%	20.0%	3.6%	24.0%
Unrelated (choice unknown)	1.7%	0.0%	1.5%	0.0%	0.0%	0.8%
Unrelated (by choice)	16.5%	4.7%	12.3%	0.0%	0.0%	8.8%
Unrelated (not by choice)	19.0%	9.3%	16.9%	0.0%	0.0%	11.6%
Number Responding	121	86	65	35	55	362
6. Timing of Securing First Job After Degree						
Held the Same Job While Enrolled	21.5%	18.6%	16.9%	11.4%	14.5%	18.0%
Secured Job by Graduation	14.9%	23.3%	18.5%	51.4%	32.7%	23.8%
Secured Job After Graduation (timing unknown)	0.0%	1.2%	0.0%	0.0%	0.0%	0.3%
Less than 1 Month After Graduation	9.9%	10.5%	6.2%	2.9%	7.3%	8.3%
1 to 3 Months After Graduation	15.7%	20.9%	26.2%	17.1%	16.4%	19.1%
3 to 6 Months After Graduation	19.8%	12.8%	20.0%	5.7%	21.8%	17.1%
6 to 9 Months After Graduation	13.2%	9.3%	7.7%	8.6%	5.5%	9.7%
More than 9 Months After Graduation	5.0%	3.5%	4.6%	2.9%	1.8%	3.9%
Number Responding	121	86	65	35	55	362

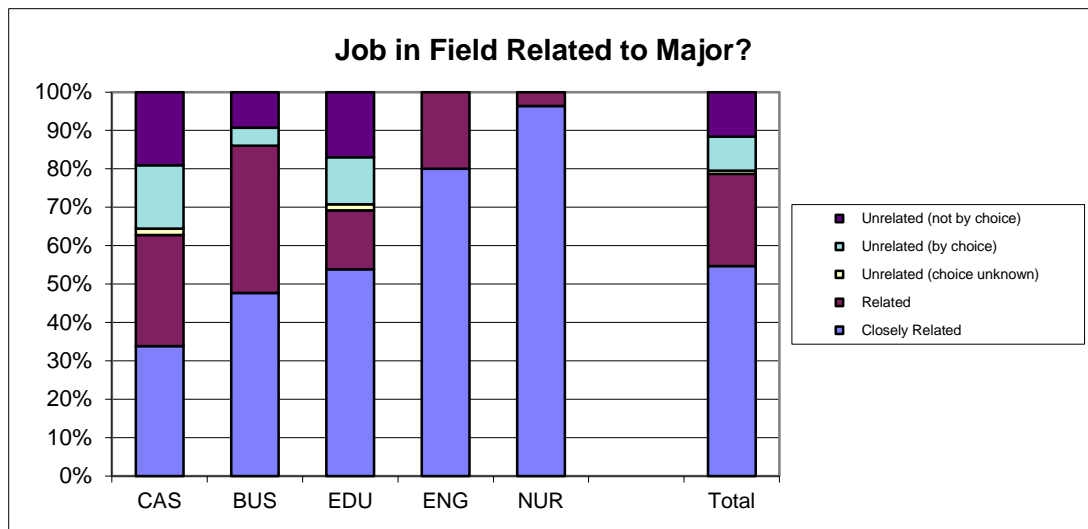
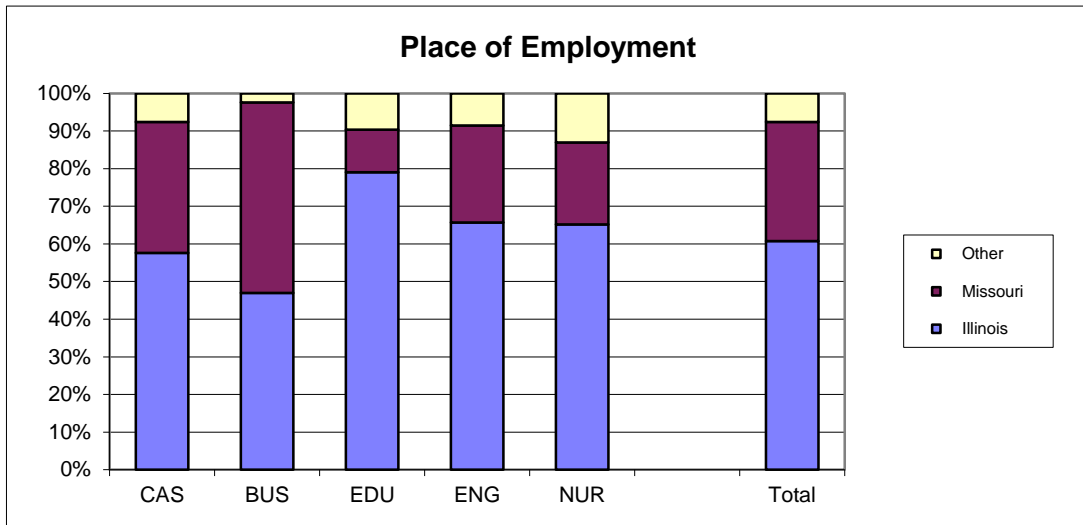
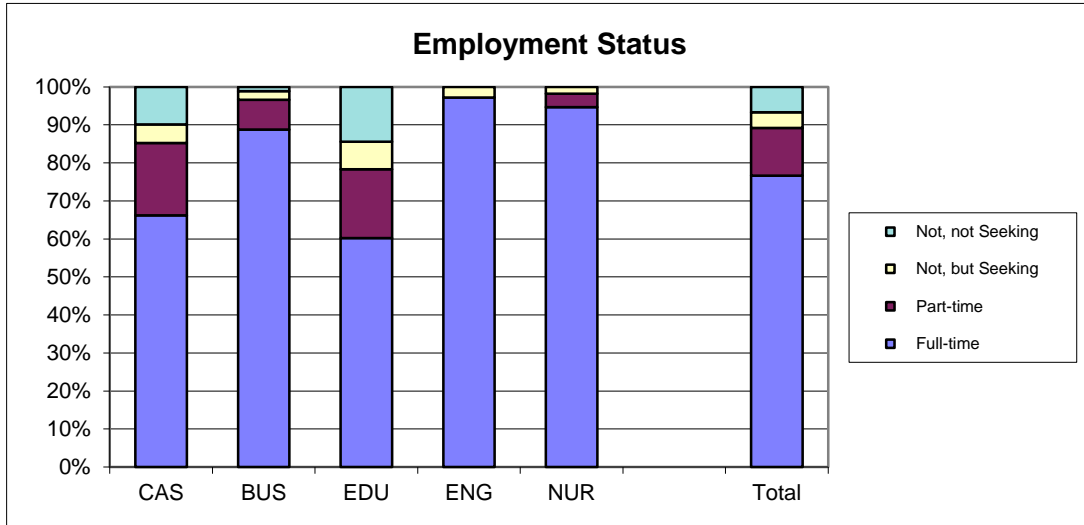
Southern Illinois University Edwardsville
Survey of 2013 Baccalaureate Graduates -- One Year Out
Survey Responses -- Part I
Employment Questions

School Detail, cont.	CAS	BUS	EDU	ENG	NUR	Total
7. Annual Earned Income in Current Job Before Taxes						
Employed Full-Time						
Less Than \$15,000	0.0%	0.0%	6.5%	0.0%	2.3%	1.4%
\$15,000 to 19,999	2.3%	0.0%	10.9%	0.0%	0.0%	2.5%
\$20,000 to \$24,999	12.6%	4.0%	23.9%	0.0%	0.0%	8.8%
\$25,000 to \$29,999	16.1%	4.0%	21.7%	0.0%	0.0%	9.5%
\$30,000 to \$34,999	26.4%	14.7%	6.5%	0.0%	0.0%	13.1%
\$35,000 to \$39,999	20.7%	13.3%	19.6%	6.3%	20.9%	17.0%
\$40,000 or More	21.8%	64.0%	10.9%	93.8%	76.7%	47.7%
Number Responding	87	75	46	32	43	283
Mean Salary	\$35,211	\$42,569	\$31,173	\$56,353	\$45,856	\$40,513
Employed Part-Time						
Less Than \$5,000	4.8%	0.0%	0.0%	NA	0.0%	2.3%
5,000 to \$9,999	9.5%	0.0%	30.8%	NA	0.0%	14.0%
\$10,000 to \$14,999	52.4%	71.4%	38.5%	NA	0.0%	48.8%
\$15,000 to \$19,999	0.0%	14.3%	30.8%	NA	0.0%	11.6%
\$20,000 or More	33.3%	14.3%	0.0%	NA	100.0%	23.3%
Number Responding	21	7	13	NA	2	43
Mean Salary	\$17,500	\$13,583	\$12,508	NA	\$37,500	\$16,283
8. Bachelor's Degree Preparation for Job						
Very Well	25.2%	8.2%	23.8%	11.4%	30.9%	20.4%
Well	21.0%	41.2%	33.3%	42.9%	32.7%	31.9%
Adequately	31.1%	41.2%	31.7%	45.7%	34.5%	35.6%
Inadequately	13.4%	5.9%	7.9%	0.0%	1.8%	7.6%
Poorly	4.2%	0.0%	1.6%	0.0%	0.0%	1.7%
Very Poorly	5.0%	3.5%	1.6%	0.0%	0.0%	2.8%
Number Responding	119	85	63	35	55	357
9a. Primary Occupation						
Management	10.9%	8.5%	0.0%	2.9%	1.8%	6.2%
Business Operations	4.2%	8.5%	6.3%	0.0%	0.0%	4.5%
Financial Specialists	0.8%	35.4%	0.0%	0.0%	0.0%	8.5%
Computer Specialists	5.0%	13.4%	1.6%	14.7%	0.0%	6.5%
Mathematical Scientists and Technicians	0.0%	1.2%	0.0%	0.0%	0.0%	0.3%
Architects, Surveyors, and Cartographers	0.8%	0.0%	0.0%	0.0%	0.0%	0.3%
Engineers and Related Technicians	1.7%	0.0%	0.0%	82.4%	0.0%	8.5%
Life & Physical Scientists, and Technicians	5.9%	0.0%	0.0%	0.0%	0.0%	2.0%
Social Scientists	2.5%	2.4%	1.6%	0.0%	0.0%	1.7%
Health: Doctors	0.0%	0.0%	0.0%	0.0%	0.0%	0.0%
Health: Registered Nurses	0.0%	1.2%	0.0%	0.0%	96.4%	15.3%
Health: Therapists	0.0%	0.0%	1.6%	0.0%	0.0%	0.3%
Health: Oth Practitnrs, Prof.s, & Suppt Wkrs	5.9%	0.0%	4.7%	0.0%	1.8%	3.1%
Community & Social Service	8.4%	0.0%	7.8%	0.0%	0.0%	4.2%
Legal: Attorneys/Judges	0.8%	0.0%	0.0%	0.0%	0.0%	0.3%
Legal: Legal Support Workers	1.7%	0.0%	0.0%	0.0%	0.0%	0.6%
Education: Early Childhood Teachers	1.7%	0.0%	18.8%	0.0%	0.0%	4.0%
Education: Elementary School Teachers	0.0%	0.0%	10.9%	0.0%	0.0%	2.0%
Education: Middle School Teachers	0.8%	0.0%	3.1%	0.0%	0.0%	0.8%
Education: Secondary School Teachers	6.7%	0.0%	1.6%	0.0%	0.0%	2.5%
Education: Special Education Teachers	0.0%	0.0%	9.4%	0.0%	0.0%	1.7%
Education: Other, except Administrators	4.2%	0.0%	6.3%	0.0%	0.0%	2.5%
continued						

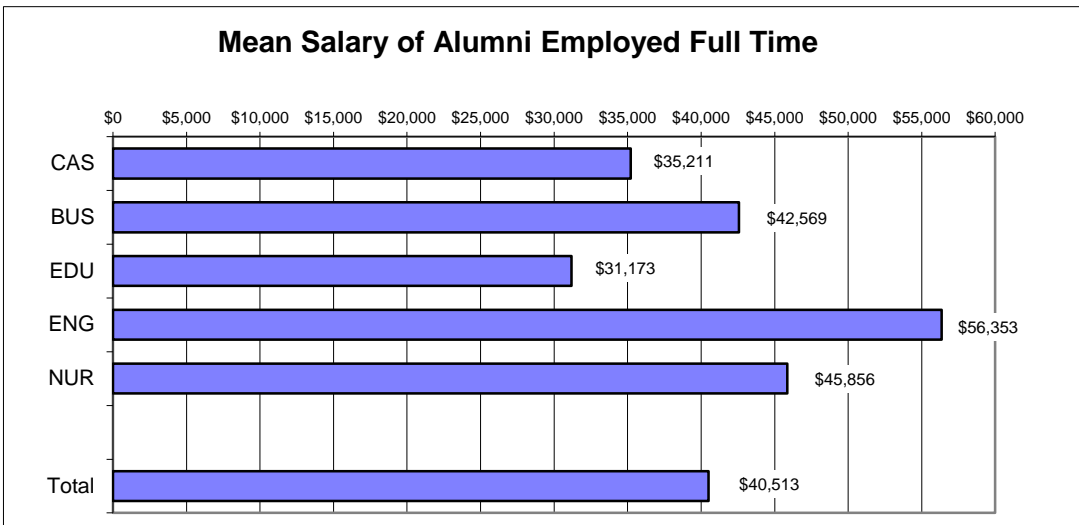
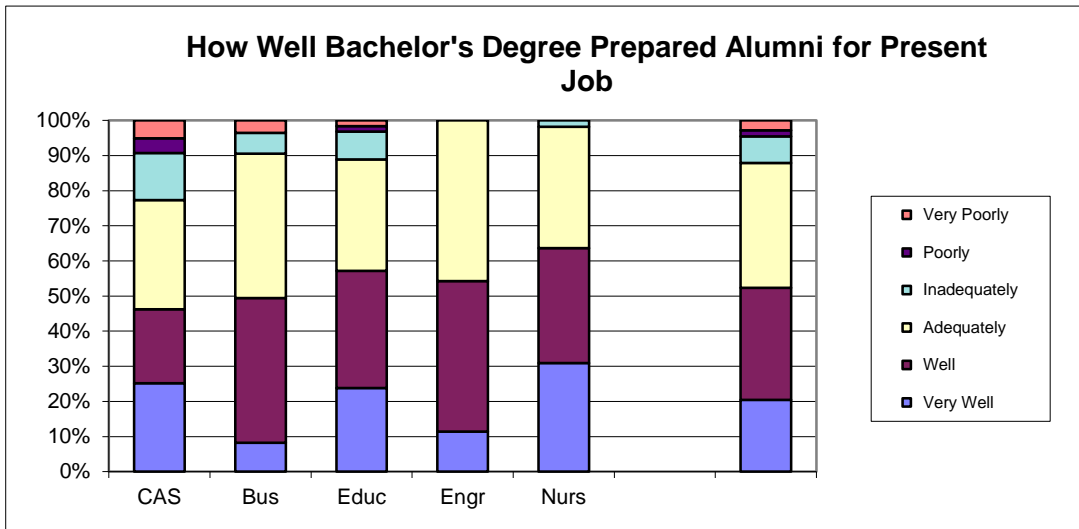
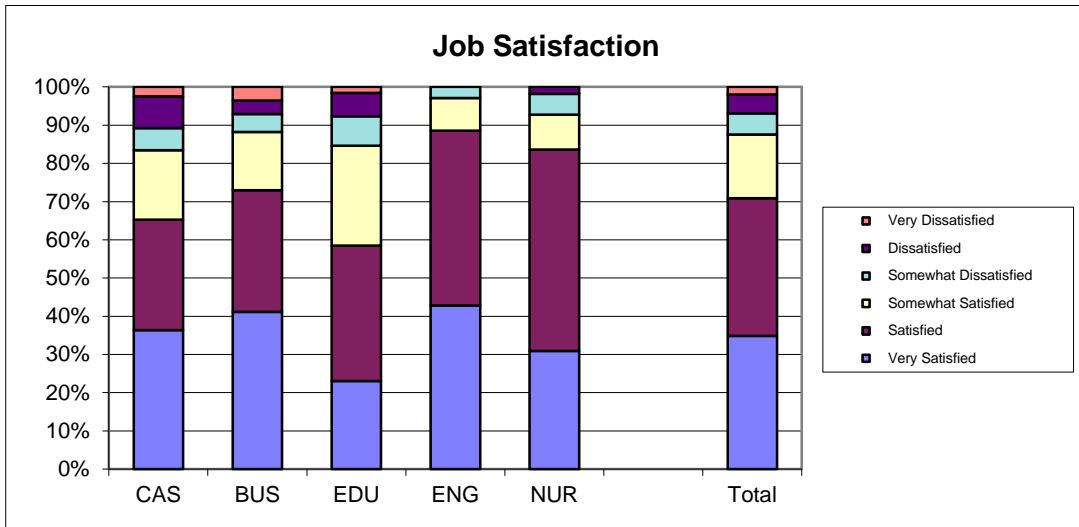
Southern Illinois University Edwardsville
Survey of 2013 Baccalaureate Graduates -- One Year Out
Survey Responses -- Part I
Employment Questions

School Detail, cont.	CAS	BUS	EDU	ENG	NUR	Total
9a. continuation of Primary Occupation						
Library Occupations	0.0%	0.0%	1.6%	0.0%	0.0%	0.3%
Art and Design Workers	0.8%	0.0%	0.0%	0.0%	0.0%	0.3%
Entertainment, Performers, Sports & Related	0.0%	0.0%	1.6%	0.0%	0.0%	0.3%
Media and Communication Workers	4.2%	1.2%	0.0%	0.0%	0.0%	1.7%
Sales	12.6%	11.0%	4.7%	0.0%	0.0%	7.6%
Office & Administration	5.9%	13.4%	6.3%	0.0%	0.0%	6.2%
Protective Services	5.9%	0.0%	0.0%	0.0%	0.0%	2.0%
Food Preparation & Serving	4.2%	1.2%	3.1%	0.0%	0.0%	2.3%
Buildings & Grounds Maintenance	0.8%	0.0%	0.0%	0.0%	0.0%	0.3%
Personal Care and Service	0.0%	0.0%	7.8%	0.0%	0.0%	1.4%
Farming, Fishing, and Forestry	1.7%	0.0%	0.0%	0.0%	0.0%	0.6%
Construction & Extractive	0.0%	1.2%	0.0%	0.0%	0.0%	0.3%
Installation, Maintenance, & Repair	0.0%	0.0%	0.0%	0.0%	0.0%	0.0%
Production	0.0%	1.2%	1.6%	0.0%	0.0%	0.6%
Transportation and Material Moving	1.7%	0.0%	0.0%	0.0%	0.0%	0.6%
Military	0.0%	0.0%	0.0%	0.0%	0.0%	0.0%
Number Responding	119	82	64	34	55	354
9b. Industry						
Agriculture, Forestry, and Fishing	6.0%	2.5%	0.0%	3.3%	0.0%	2.9%
Mining	0.0%	0.0%	0.0%	3.3%	0.0%	0.3%
Utilities	1.0%	5.0%	0.0%	10.0%	0.0%	2.6%
Construction	0.0%	2.5%	0.0%	10.0%	0.0%	1.6%
Manufacturing	5.0%	10.0%	3.8%	26.7%	0.0%	7.4%
Wholesale Trade	2.0%	1.3%	0.0%	0.0%	0.0%	1.0%
Retail Trade	7.0%	6.3%	5.7%	0.0%	0.0%	4.8%
Transportation	3.0%	1.3%	0.0%	3.3%	0.0%	1.6%
Information	1.0%	7.5%	1.9%	6.7%	0.0%	3.2%
Finance & Insurance	4.0%	22.5%	1.9%	0.0%	0.0%	7.4%
Real Estate & Rental & Leasing	3.0%	1.3%	0.0%	0.0%	0.0%	1.3%
Professional, Scientific & Technical Services	10.0%	16.3%	3.8%	30.0%	0.0%	10.9%
Management of Companies & Enterprises	0.0%	1.3%	0.0%	0.0%	0.0%	0.3%
Admin & Suppt, Waste Mgmt & Remedtn Svcs	1.0%	0.0%	1.9%	3.3%	0.0%	1.0%
Educational Services	15.0%	2.5%	47.2%	0.0%	0.0%	13.5%
Health Care & Social Assistance	18.0%	5.0%	22.6%	0.0%	100.0%	26.6%
Arts, Entertainment & Recreation	10.0%	0.0%	1.9%	0.0%	0.0%	3.5%
Accommodations & Food Services	3.0%	0.0%	1.9%	0.0%	0.0%	1.3%
Other Services (except Public Admin)	7.0%	12.5%	7.5%	0.0%	0.0%	6.7%
Public Administration	4.0%	2.5%	0.0%	3.3%	0.0%	2.2%
Number Responding	100	80	53	30	49	312
5/7/2015						

2013 Baccalaureate Graduates One Year Out Employment



2013 Baccalaureate Graduates One Year Out Employment, cont.

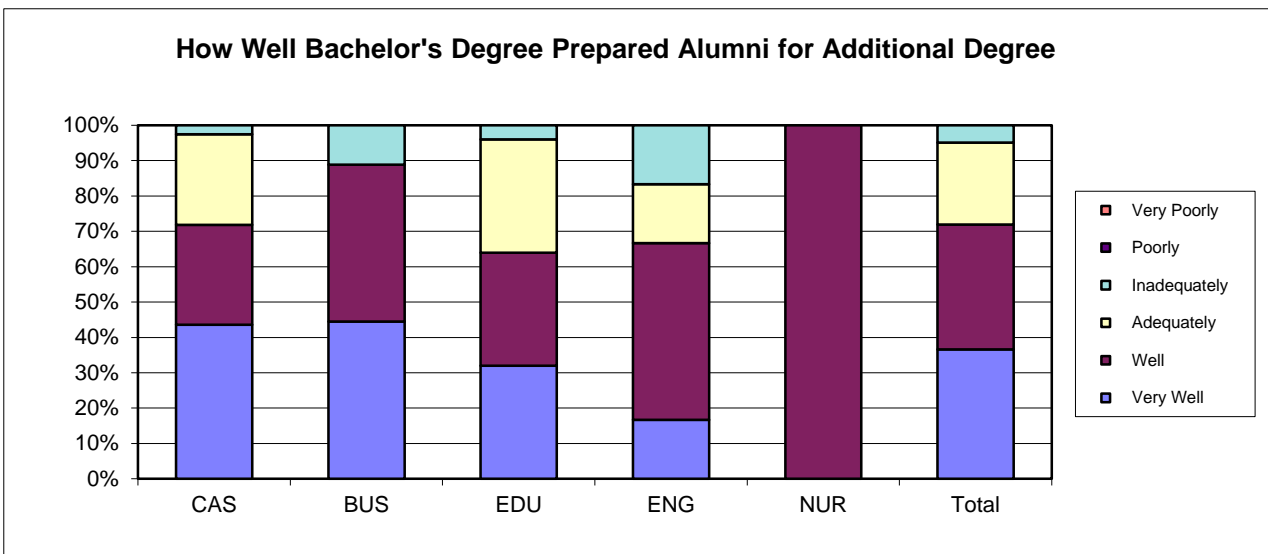
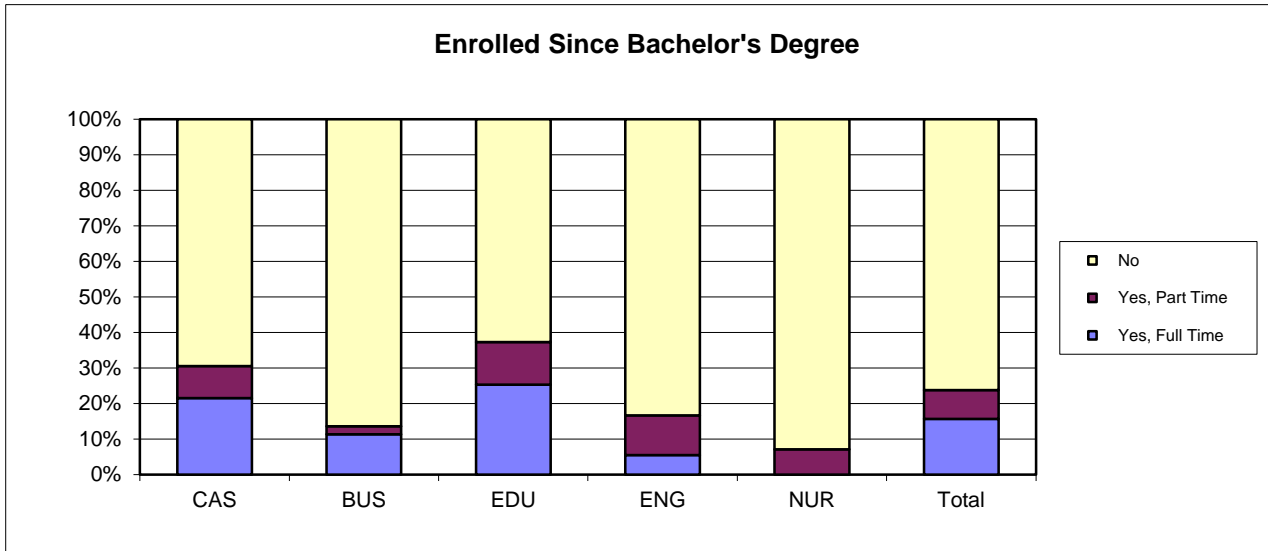


Southern Illinois University Edwardsville
Survey of 2013 Baccalaureate Graduates -- One Year Out
Survey Responses -- Part II
Education Questions

School Detail	CAS	BUS	EDU	ENG	NUR	Total
Number of Survey Respondents	144	89	83	36	56	408
10. Enrolled in College or University Since Degree?						
Yes, Full Time	21.5%	11.4%	25.3%	5.6%	0.0%	15.7%
Yes, Part Time	9.0%	2.3%	12.0%	11.1%	7.1%	8.1%
No	69.4%	86.4%	62.7%	83.3%	92.9%	76.2%
Number Responding	144	88	83	36	56	407
11. Degree?						
Yes	100.0%	100.0%	100.0%	100.0%	100.0%	100.0%
No	0.0%	0.0%	0.0%	0.0%	0.0%	0.0%
Number Responding	40	10	26	6	3	85
The remaining questions in Part II were to be answered only by respondents who were pursuing or had completed another degree.						
	40	10	26	6	3	85
11b. Pursuing or Completed Which Degree?						
Associate's	5.0%	0.0%	3.8%	0.0%	0.0%	3.5%
Second Bachelor's	10.0%	10.0%	0.0%	0.0%	0.0%	5.9%
Academic Master's (MA, MS, MEd, etc)	42.5%	30.0%	69.2%	66.7%	33.3%	50.6%
Prof. Master's or Ed Specialist	17.5%	60.0%	15.4%	33.3%	33.3%	23.5%
Medicine (MD, OD)	7.5%	0.0%	0.0%	0.0%	0.0%	3.5%
Health Prof. (dentistry, pharmacy, etc.)	10.0%	0.0%	3.8%	0.0%	33.3%	7.1%
Theology/Divinity	0.0%	0.0%	0.0%	0.0%	0.0%	0.0%
Law (LLB, JD)	5.0%	0.0%	0.0%	0.0%	0.0%	2.4%
Doctorate (PhD, EdD, DA, DBA, etc.)	0.0%	0.0%	3.8%	0.0%	0.0%	1.2%
Other	2.5%	0.0%	3.8%	0.0%	0.0%	2.4%
Number Responding	40	10	26	6	3	85
12. How Well Bach. Degree Prepared You for Additional Degree						
Very Well	43.6%	44.4%	32.0%	16.7%	0.0%	36.6%
Well	28.2%	44.4%	32.0%	50.0%	100.0%	35.4%
Adequately	25.6%	0.0%	32.0%	16.7%	0.0%	23.2%
Inadequately	2.6%	11.1%	4.0%	16.7%	0.0%	4.9%
Poorly	0.0%	0.0%	0.0%	0.0%	0.0%	0.0%
Very Poorly	0.0%	0.0%	0.0%	0.0%	0.0%	0.0%
Number Responding	39	9	25	6	3	82

5/7/2015

2013 Baccalaureate Graduates One Year Out Additional Education

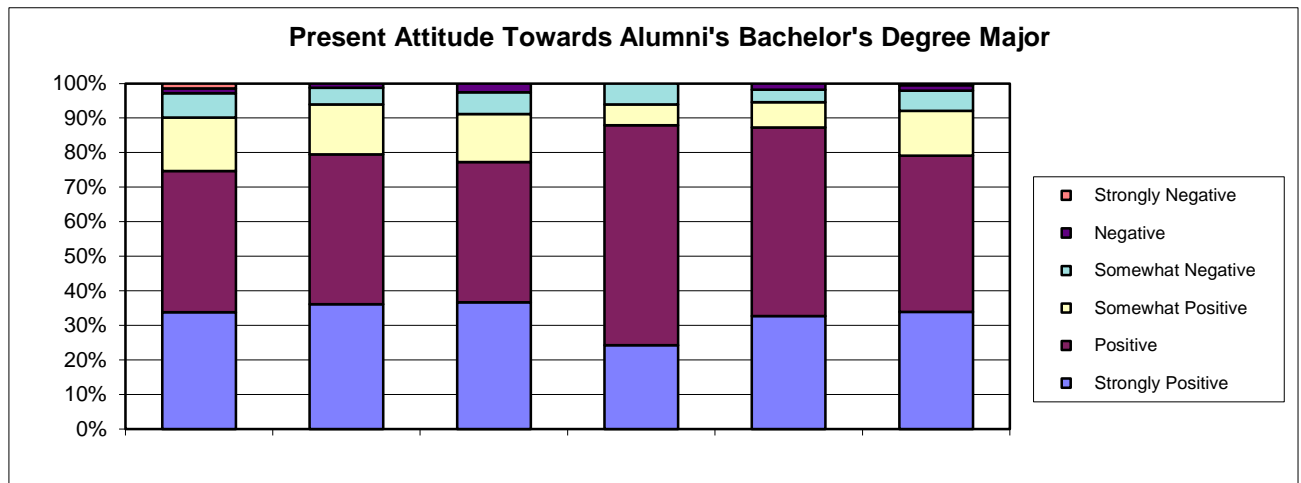
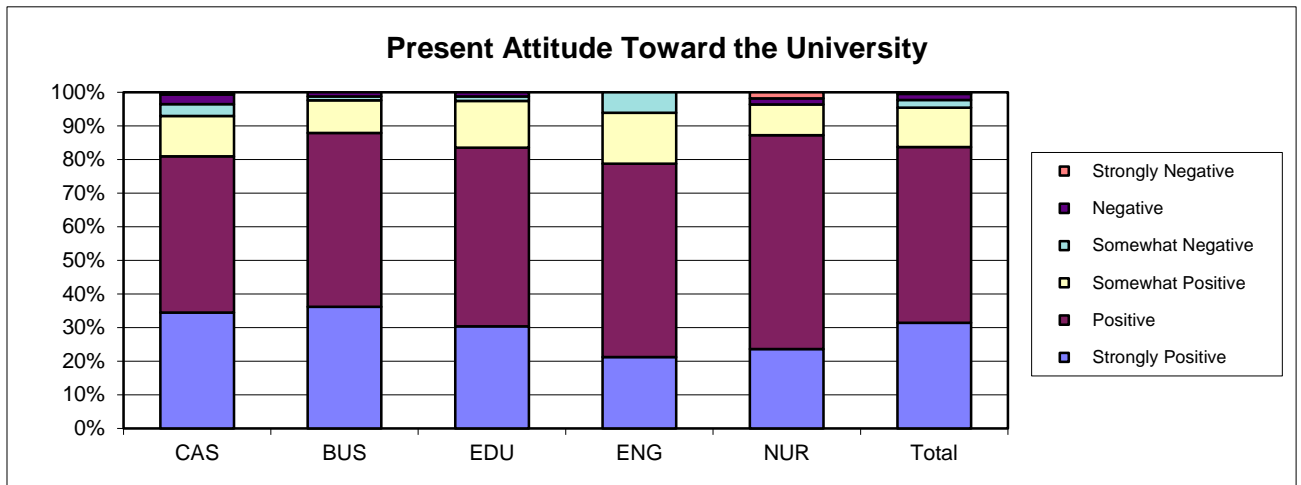


Southern Illinois University Edwardsville
Survey of 2013 Baccalaureate Graduates -- One Year Out
Survey Responses -- Part III
Satisfaction Questions

School Detail	CAS	BUS	EDU	ENG	NUR	Total
Number of Survey Respondents	144	89	83	36	56	408
13. Present Attitude Towards the University						
Strongly Positive	34.5%	36.1%	30.4%	21.2%	23.6%	31.4%
Positive	46.5%	51.8%	53.2%	57.6%	63.6%	52.3%
Somewhat Positive	12.0%	9.6%	13.9%	15.2%	9.1%	11.7%
Somewhat Negative	3.5%	1.2%	1.3%	6.1%	0.0%	2.3%
Negative	2.8%	1.2%	1.3%	0.0%	1.8%	1.8%
Strongly Negative	0.7%	0.0%	0.0%	0.0%	1.8%	0.5%
Number Responding	142	83	79	33	55	392
14. Present Attitude Towards your Bachelor's Degree Major						
Strongly Positive	33.8%	36.1%	36.7%	24.2%	32.7%	33.9%
Positive	40.8%	43.4%	40.5%	63.6%	54.5%	45.2%
Somewhat Positive	15.5%	14.5%	13.9%	6.1%	7.3%	13.0%
Somewhat Negative	7.0%	4.8%	6.3%	6.1%	3.6%	5.9%
Negative	1.4%	1.2%	2.5%	0.0%	1.8%	1.5%
Strongly Negative	1.4%	0.0%	0.0%	0.0%	0.0%	0.5%
Number Responding	142	83	79	33	55	392

5/7/2015

2013 Baccalaureate Graduates One Year Out *Satisfaction*



Southern Illinois University Edwardsville
Survey of 2013 Baccalaureate Graduates -- One Year Out
Survey Responses -- Part IV
Educational Practices Questions

School Detail	CAS	BUS	EDU	ENG	NUR	Total
Number of Survey Respondents	144	89	83	36	56	408
15. Faculty in Major Were Accessible Outside of Class						
Very Often	46.9%	34.1%	59.0%	19.4%	30.4%	41.9%
Often	37.1%	50.0%	34.9%	55.6%	46.4%	42.4%
Sometimes	12.6%	14.8%	3.6%	16.7%	23.2%	13.1%
Infrequently	2.8%	1.1%	2.4%	8.3%	0.0%	2.5%
Never	0.7%	0.0%	0.0%	0.0%	0.0%	0.2%
Number Responding	143	88	83	36	56	406
16. In Major, Student was Expected to Work Cooperatively with Other Students						
Very Often	37.8%	61.4%	54.2%	25.0%	58.9%	48.0%
Often	40.6%	34.1%	37.3%	66.7%	32.1%	39.7%
Sometimes	16.8%	4.5%	7.2%	8.3%	8.9%	10.3%
Infrequently	4.9%	0.0%	1.2%	0.0%	0.0%	2.0%
Never	0.0%	0.0%	0.0%	0.0%	0.0%	0.0%
Number Responding	143	88	83	36	56	406
17. In Major, Faculty Encouraged Student to Challenge Ideas (student's, other students, and in readings & materials)						
Very Often	39.9%	12.5%	43.4%	2.8%	33.9%	30.5%
Often	37.8%	48.9%	34.9%	47.2%	37.5%	40.4%
Sometimes	14.0%	34.1%	19.3%	36.1%	25.0%	22.9%
Infrequently	7.0%	2.3%	2.4%	8.3%	3.6%	4.7%
Never	1.4%	2.3%	0.0%	5.6%	0.0%	1.5%
Number Responding	143	88	83	36	56	406
18. In Major, Faculty Used Appropriate Teaching Activities to Help Student Learn						
Very Often	38.7%	29.5%	51.8%	11.1%	19.6%	34.3%
Often	43.0%	54.5%	34.9%	55.6%	55.4%	46.7%
Sometimes	14.8%	13.6%	10.8%	27.8%	19.6%	15.6%
Infrequently	2.8%	2.3%	2.4%	5.6%	3.6%	3.0%
Never	0.7%	0.0%	0.0%	0.0%	1.8%	0.5%
Number Responding	142	88	83	36	56	405
19. In Major, Faculty had High Expectations for Quality Of Student Work						
Very Often	42.7%	42.0%	46.3%	25.0%	48.2%	42.5%
Often	39.2%	40.9%	40.2%	61.1%	39.3%	41.7%
Sometimes	15.4%	14.8%	12.2%	11.1%	12.5%	13.8%
Infrequently	2.8%	2.3%	1.2%	2.8%	0.0%	2.0%
Never	0.0%	0.0%	0.0%	0.0%	0.0%	0.0%
Number Responding	143	88	82	36	56	405
20. In Major, Faculty Provided Timely Feedback						
Very Often	37.1%	27.3%	44.6%	22.2%	25.0%	33.5%
Often	42.0%	47.7%	37.3%	41.7%	46.4%	42.9%
Sometimes	18.2%	23.9%	16.9%	25.0%	25.0%	20.7%
Infrequently	2.1%	1.1%	1.2%	11.1%	3.6%	2.7%
Never	0.7%	0.0%	0.0%	0.0%	0.0%	0.2%
Number Responding	143	88	83	36	56	406

Southern Illinois University Edwardsville
Survey of 2013 Baccalaureate Graduates -- One Year Out
Survey Responses -- Part IV
Educational Practices Questions

School Detail, cont.	CAS	BUS	EDU	ENG	NUR	Total
21. In Major, Faculty Encouraged Students' Questions and Discussion in Class						
Very Often	54.2%	47.7%	59.0%	27.8%	39.3%	49.4%
Often	36.6%	39.8%	32.5%	55.6%	41.1%	38.8%
Sometimes	6.3%	12.5%	8.4%	13.9%	19.6%	10.6%
Infrequently	2.8%	0.0%	0.0%	2.8%	0.0%	1.2%
Never	0.0%	0.0%	0.0%	0.0%	0.0%	0.0%
Number Responding	142	88	83	36	56	405
22. In Major, Student Spent Necessary Time and Energy to Come to Class Prepared						
Very Often	40.6%	40.9%	54.2%	27.8%	44.6%	42.9%
Often	44.8%	39.8%	37.3%	55.6%	46.4%	43.3%
Sometimes	14.0%	18.2%	7.2%	13.9%	8.9%	12.8%
Infrequently	0.7%	1.1%	1.2%	2.8%	0.0%	1.0%
Never	0.0%	0.0%	0.0%	0.0%	0.0%	0.0%
Number Responding	143	88	83	36	56	406

5/7/2015

Southern Illinois University Edwardsville
Survey of 2013 Baccalaureate Graduates -- One Year Out
Survey Responses -- Part V
Program Quality Questions

School Detail	CAS	BUS	EDU	ENG	NUR	Total
Number of Survey Respondents	144	89	83	36	56	408
23A. Quality of Major in Offering						
Sufficient Courses						
Excellent	48.3%	45.5%	43.4%	19.4%	53.6%	44.8%
Good	37.1%	46.6%	49.4%	55.6%	35.7%	43.1%
Fair	11.9%	5.7%	7.2%	19.4%	8.9%	9.9%
Poor	2.8%	2.3%	0.0%	5.6%	1.8%	2.2%
Number Responding	143	88	83	36	56	406
23B. Quality of Major in Offering						
Convenient Class Times						
Excellent	38.2%	34.1%	42.2%	5.6%	32.7%	34.5%
Good	33.3%	45.5%	39.8%	55.6%	41.8%	40.4%
Fair	22.9%	19.3%	15.7%	30.6%	21.8%	21.2%
Poor	5.6%	1.1%	2.4%	8.3%	3.6%	3.9%
Number Responding	144	88	83	36	55	406
23C. Quality of Major in Offering						
Logical Class Sequences						
Excellent	38.9%	36.0%	49.4%	19.4%	35.7%	38.3%
Good	45.1%	50.0%	38.6%	69.4%	46.4%	47.2%
Fair	13.9%	11.6%	10.8%	11.1%	16.1%	12.8%
Poor	2.1%	2.3%	1.2%	0.0%	1.8%	1.7%
Number Responding	144	86	83	36	56	405
24 Quality of Faculty in Major						
Excellent	54.5%	55.7%	61.4%	25.0%	45.5%	52.3%
Good	33.6%	37.5%	32.5%	58.3%	41.8%	37.5%
Fair	10.5%	5.7%	6.0%	13.9%	7.3%	8.4%
Poor	1.4%	1.1%	0.0%	2.8%	5.5%	1.7%
Number Responding	143	88	83	36	55	405
25 Grading Standards in Major Were:						
Too High	2.8%	4.5%	0.0%	2.8%	7.3%	3.2%
About Right	89.6%	92.0%	95.2%	94.4%	90.9%	91.9%
Too Low	7.6%	3.4%	4.8%	2.8%	1.8%	4.9%
Number Responding	144	88	83	36	55	406

5/8/2015

Southern Illinois University Edwardsville
Survey of 2013 Baccalaureate Graduates -- One Year Out
Survey Responses -- Part VI
Educational Effectiveness Questions

School Detail	CAS	BUS	EDU	ENG	NUR	Total
Number of Survey Respondents	144	89	83	36	56	408
26. Helpfulness of University Experiences in:						
A. Developing Critical Thinking Ability						
Extremely Helpful	33.1%	17.0%	25.3%	20.0%	26.8%	26.0%
Very Helpful	41.5%	56.8%	54.2%	51.4%	46.4%	49.0%
Moderately Helpful	20.4%	21.6%	16.9%	20.0%	21.4%	20.0%
Slightly Helpful	2.8%	4.5%	2.4%	8.6%	3.6%	3.7%
Not Helpful	2.1%	0.0%	1.2%	0.0%	1.8%	1.2%
Number Responding	142	88	83	35	56	404
B. Developing Sense of Ethics						
Extremely Helpful	28.9%	18.2%	25.3%	0.0%	16.1%	21.5%
Very Helpful	39.4%	40.9%	51.8%	45.7%	51.8%	44.6%
Moderately Helpful	17.6%	29.5%	15.7%	42.9%	25.0%	23.0%
Slightly Helpful	9.2%	5.7%	4.8%	5.7%	1.8%	6.2%
Not Helpful	4.9%	5.7%	2.4%	5.7%	5.4%	4.7%
Number Responding	142	88	83	35	56	404
C. Understanding People with Different Backgrounds, Habits, Values, Appearances and Abilities						
Extremely Helpful	36.6%	21.6%	30.1%	2.9%	23.2%	27.2%
Very Helpful	31.7%	31.8%	45.8%	42.9%	41.1%	36.9%
Moderately Helpful	21.8%	33.0%	16.9%	28.6%	30.4%	25.0%
Slightly Helpful	7.0%	10.2%	6.0%	22.9%	3.6%	8.4%
Not Helpful	2.8%	3.4%	1.2%	2.9%	1.8%	2.5%
Number Responding	142	88	83	35	56	404
D. Becoming a More Active Citizen						
Extremely Helpful	21.8%	9.1%	24.1%	2.9%	12.5%	16.6%
Very Helpful	26.1%	22.7%	30.1%	17.1%	35.7%	26.7%
Moderately Helpful	25.4%	38.6%	28.9%	42.9%	37.5%	32.2%
Slightly Helpful	16.2%	17.0%	9.6%	20.0%	10.7%	14.6%
Not Helpful	10.6%	12.5%	7.2%	17.1%	3.6%	9.9%
Number Responding	142	88	83	35	56	404
E. Improving Quality of Life (aside from financial benefits)						
Extremely Helpful	23.2%	14.8%	27.7%	2.9%	19.6%	20.0%
Very Helpful	27.5%	35.2%	26.5%	45.7%	37.5%	31.9%
Moderately Helpful	30.3%	34.1%	27.7%	31.4%	30.4%	30.7%
Slightly Helpful	11.3%	8.0%	15.7%	8.6%	7.1%	10.6%
Not Helpful	7.7%	8.0%	2.4%	11.4%	5.4%	6.7%
Number Responding	142	88	83	35	56	404
F. Developing Reasoning Skills						
Extremely Helpful	30.0%	20.5%	28.0%	17.6%	26.8%	26.0%
Very Helpful	40.7%	54.5%	47.6%	55.9%	51.8%	48.0%
Moderately Helpful	19.3%	21.6%	18.3%	20.6%	16.1%	19.3%
Slightly Helpful	7.1%	2.3%	4.9%	2.9%	3.6%	4.8%
Not Helpful	2.9%	1.1%	1.2%	2.9%	1.8%	2.0%
Number Responding	140	88	82	34	56	400

Southern Illinois University Edwardsville
Survey of 2013 Baccalaureate Graduates -- One Year Out
Survey Responses -- Part VI
Educational Effectiveness Questions

School Detail, cont.	CAS	BUS	EDU	ENG	NUR	Total
G. Viewing Problems from Different Perspectives						
Extremely Helpful	35.9%	29.5%	38.6%	20.0%	26.8%	32.4%
Very Helpful	39.4%	44.3%	32.5%	48.6%	44.6%	40.6%
Moderately Helpful	18.3%	20.5%	25.3%	14.3%	23.2%	20.5%
Slightly Helpful	4.2%	4.5%	3.6%	14.3%	5.4%	5.2%
Not Helpful	2.1%	1.1%	0.0%	2.9%	0.0%	1.2%
Number Responding	142	88	83	35	56	404
H. Developing Ability to Solve Problems						
Extremely Helpful	33.3%	31.8%	32.5%	34.3%	26.8%	32.0%
Very Helpful	41.8%	48.9%	38.6%	45.7%	53.6%	44.7%
Moderately Helpful	16.3%	15.9%	22.9%	14.3%	14.3%	17.1%
Slightly Helpful	6.4%	2.3%	6.0%	5.7%	3.6%	5.0%
Not Helpful	2.1%	1.1%	0.0%	0.0%	1.8%	1.2%
Number Responding	141	88	83	35	56	403
I. Making Informed Decisions as a Citizen						
Extremely Helpful	31.0%	19.3%	25.6%	2.9%	17.9%	23.1%
Very Helpful	30.3%	39.8%	40.2%	37.1%	35.7%	35.7%
Moderately Helpful	23.9%	26.1%	22.0%	37.1%	30.4%	26.1%
Slightly Helpful	8.5%	9.1%	9.8%	8.6%	10.7%	9.2%
Not Helpful	6.3%	5.7%	2.4%	14.3%	5.4%	6.0%
Number Responding	142	88	82	35	56	403
J. Developing Writing Skills						
Extremely Helpful	39.4%	25.0%	28.0%	5.7%	21.4%	28.5%
Very Helpful	31.0%	43.2%	41.5%	25.7%	32.1%	35.5%
Moderately Helpful	17.6%	21.6%	20.7%	45.7%	32.1%	23.6%
Slightly Helpful	7.7%	8.0%	9.8%	14.3%	10.7%	9.2%
Not Helpful	4.2%	2.3%	0.0%	8.6%	3.6%	3.2%
Number Responding	142	88	82	35	56	403
K. Developing Oral Communication Skills						
Extremely Helpful	35.2%	29.5%	34.1%	14.3%	21.4%	30.0%
Very Helpful	39.4%	50.0%	41.5%	31.4%	42.9%	41.9%
Moderately Helpful	14.8%	13.6%	18.3%	37.1%	25.0%	18.6%
Slightly Helpful	7.7%	4.5%	3.7%	14.3%	7.1%	6.7%
Not Helpful	2.8%	2.3%	2.4%	2.9%	3.6%	2.7%
Number Responding	142	88	82	35	56	403
L. Developing Knowledge of Scientific and Technological Developments						
Extremely Helpful	31.0%	21.6%	31.7%	25.7%	28.6%	28.3%
Very Helpful	26.8%	33.0%	35.4%	51.4%	42.9%	34.2%
Moderately Helpful	24.6%	29.5%	26.8%	22.9%	16.1%	24.8%
Slightly Helpful	12.7%	12.5%	4.9%	0.0%	8.9%	9.4%
Not Helpful	4.9%	3.4%	1.2%	0.0%	3.6%	3.2%
Number Responding	142	88	82	35	56	403

Southern Illinois University Edwardsville
Survey of 2013 Baccalaureate Graduates -- One Year Out
Survey Responses -- Part VI
Educational Effectiveness Questions

School Detail, cont.	CAS	BUS	EDU	ENG	NUR	Total
27. Undergraduate Education Broadened Interest Beyond Subjects in Major						
Strongly Agree	24.3%	12.5%	20.5%	8.6%	19.6%	19.0%
Agree	56.3%	55.7%	56.6%	48.6%	41.1%	53.4%
Neutral	16.0%	26.1%	19.3%	22.9%	30.4%	21.4%
Disagree	2.1%	4.5%	3.6%	17.1%	5.4%	4.7%
Strongly Disagree	1.4%	1.1%	0.0%	2.9%	3.6%	1.5%
Number Responding	144	88	83	35	56	406
28. Importance of College Education to:						
A. Personal Life						
Very Important	59.7%	58.0%	60.2%	45.7%	62.5%	58.6%
Moderately Important	29.2%	28.4%	31.3%	25.7%	23.2%	28.3%
Slightly Important	8.3%	11.4%	8.4%	22.9%	10.7%	10.6%
Not Important	2.8%	2.3%	0.0%	5.7%	3.6%	2.5%
Number Responding	144	88	83	35	56	406
B. Community Life						
Very Important	36.1%	23.9%	44.6%	5.7%	39.3%	33.0%
Moderately Important	36.1%	36.4%	36.1%	31.4%	42.9%	36.7%
Slightly Important	18.8%	28.4%	14.5%	51.4%	12.5%	21.9%
Not Important	9.0%	11.4%	4.8%	11.4%	5.4%	8.4%
Number Responding	144	88	83	35	56	406
C. Professional Life						
Very Important	72.2%	77.3%	67.5%	71.4%	89.3%	74.6%
Moderately Important	14.6%	13.6%	21.7%	20.0%	10.7%	15.8%
Slightly Important	9.0%	5.7%	7.2%	5.7%	0.0%	6.4%
Not Important	4.2%	3.4%	3.6%	2.9%	0.0%	3.2%
Number Responding	144	88	83	35	56	406
29. Quality of SIUE Education Relative to That of Friends at Other Schools						
Among the Best	23.1%	19.3%	28.0%	9.1%	17.9%	21.4%
Above Average	39.9%	50.0%	40.2%	51.5%	48.2%	44.3%
Average	32.2%	26.1%	30.5%	39.4%	30.4%	30.8%
Below Average	4.2%	4.5%	1.2%	0.0%	3.6%	3.2%
Among the Worst	0.7%	0.0%	0.0%	0.0%	0.0%	0.2%
Number Responding	143	88	82	33	56	402
30. Involvement Since Bachelor's Degree with:						
A. Organized, Formal, Career Related Learning (non-degree)						
Currently Involved	34.5%	33.7%	34.9%	31.4%	48.2%	36.1%
Have Been Involved	31.0%	18.6%	36.1%	40.0%	28.6%	29.9%
Never Involved	34.5%	47.7%	28.9%	28.6%	23.2%	34.1%
Number Responding	142	86	83	35	56	402
B. Personal Enrichment Studies						
Currently Involved	22.5%	19.3%	20.5%	8.6%	16.4%	19.4%
Have Been Involved	35.9%	25.0%	32.5%	40.0%	34.5%	33.0%
Never Involved	41.5%	55.7%	47.0%	51.4%	49.1%	47.6%
Number Responding	142	88	83	35	55	403

Southern Illinois University Edwardsville
Survey of 2013 Baccalaureate Graduates -- One Year Out
Survey Responses -- Part VI
Educational Effectiveness Questions

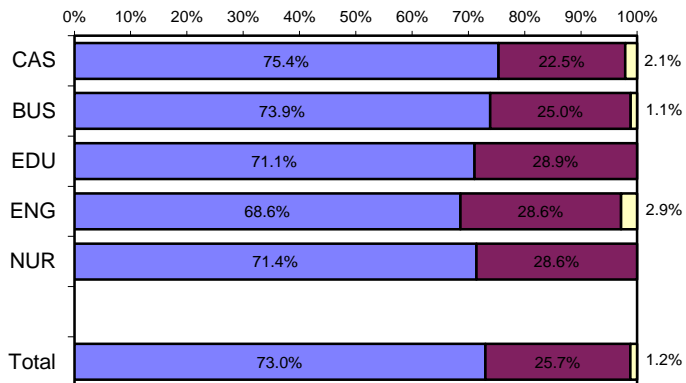
School Detail, cont.	CAS	BUS	EDU	ENG	NUR	Total
C. Professional Activities or Organizations						
Currently Involved	34.3%	30.7%	34.1%	28.6%	48.2%	34.9%
Have Been Involved	37.1%	34.1%	39.0%	42.9%	33.9%	36.9%
Never Involved	28.7%	35.2%	26.8%	28.6%	17.9%	28.2%
Number Responding	143	88	82	35	56	404
D. Volunteer Work / Community Svc Activities or Organizations						
Currently Involved	32.9%	22.7%	36.1%	22.9%	28.6%	29.9%
Have Been Involved	40.6%	39.8%	33.7%	40.0%	44.6%	39.5%
Never Involved	26.6%	37.5%	30.1%	37.1%	26.8%	30.6%
Number Responding	143	88	83	35	56	405
E. Social / Recreational Activities or Organizations						
Currently Involved	38.5%	38.6%	37.3%	37.1%	44.6%	39.0%
Have Been Involved	40.6%	37.5%	41.0%	31.4%	41.1%	39.3%
Never Involved	21.0%	23.9%	21.7%	31.4%	14.3%	21.7%
Number Responding	143	88	83	35	56	405
F. Political Activities or Organizations						
Currently Involved	8.4%	4.5%	6.0%	2.9%	5.4%	6.2%
Have Been Involved	22.4%	6.8%	16.9%	11.4%	16.1%	16.0%
Never Involved	69.2%	88.6%	77.1%	85.7%	78.6%	77.8%
Number Responding	143	88	83	35	56	405
G. Religious / Ethical Activities or Organizations						
Currently Involved	23.9%	28.4%	28.0%	37.1%	33.9%	28.3%
Have Been Involved	21.8%	25.0%	29.3%	22.9%	32.1%	25.6%
Never Involved	54.2%	46.6%	42.7%	40.0%	33.9%	46.2%
Number Responding	142	88	82	35	56	403
H. Support or Participation in the Arts (music, drama, dance, art)						
Currently Involved	21.3%	12.5%	10.8%	14.3%	10.7%	15.1%
Have Been Involved	34.0%	21.6%	38.6%	20.0%	26.8%	30.0%
Never Involved	44.7%	65.9%	50.6%	65.7%	62.5%	54.8%
Number Responding	141	88	83	35	56	403
I. Reading books not directly related to your job						
Currently Involved	69.0%	54.5%	57.8%	42.9%	64.3%	60.6%
Have Been Involved	21.1%	20.5%	31.3%	22.9%	30.4%	24.5%
Never Involved	9.9%	25.0%	10.8%	34.3%	5.4%	14.9%
Number Responding	142	88	83	35	56	404

5/8/2015

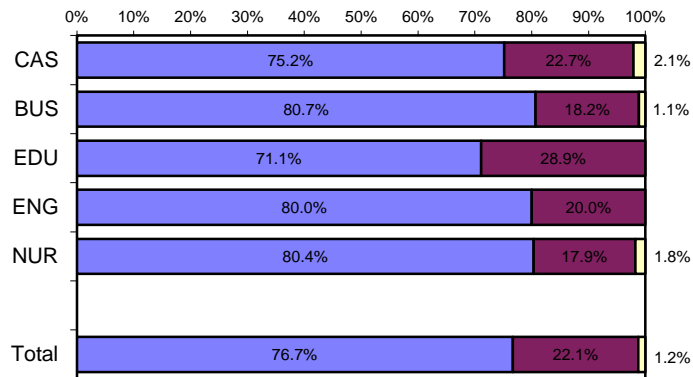
Helpfulness of University Experiences in:

■ Very to Extremely Helpful
 ■ Slightly to Moderately Helpful
 ■ Not Helpful

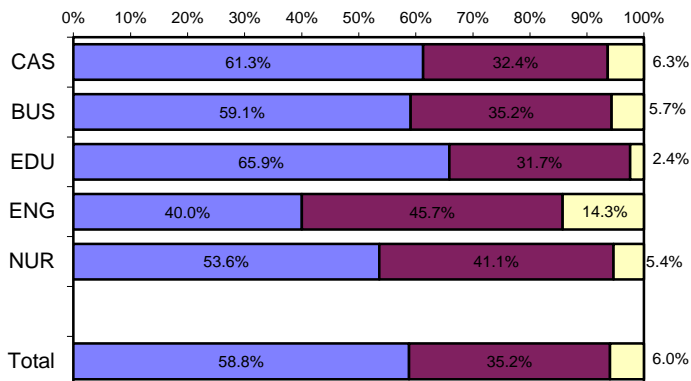
Viewing Problems from Different Perspectives



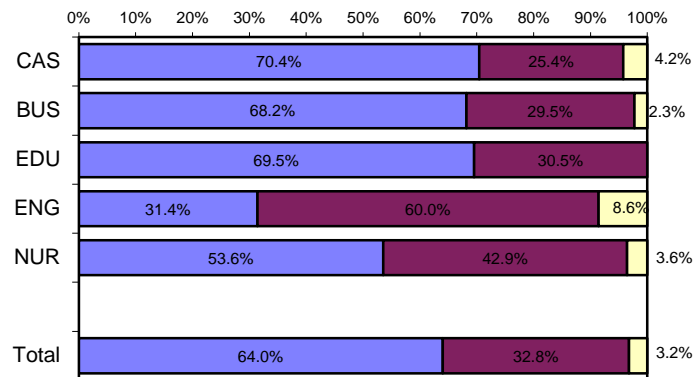
Developing Ability to Solve Problems



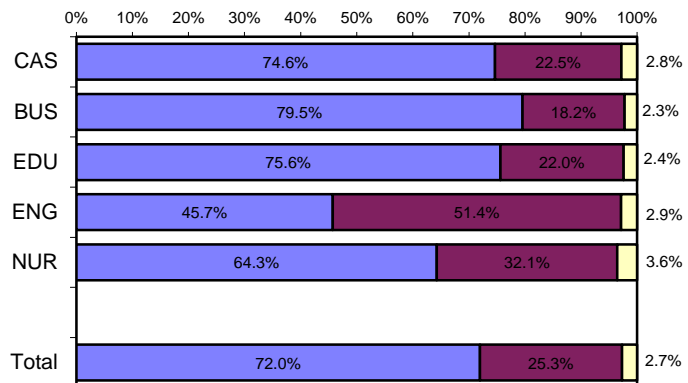
Making Informed Decisions as a Citizen



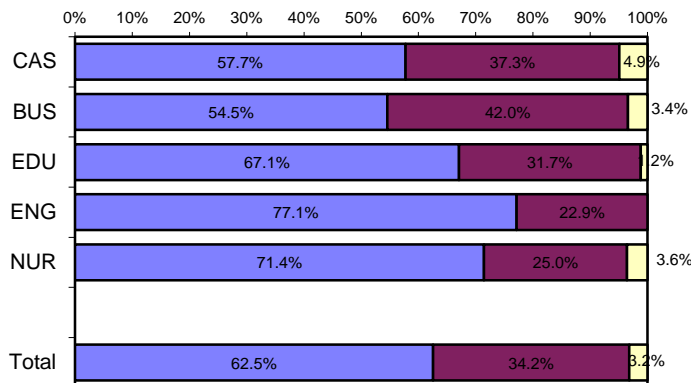
Developing Writing Skills



Developing Oral Communication Skills



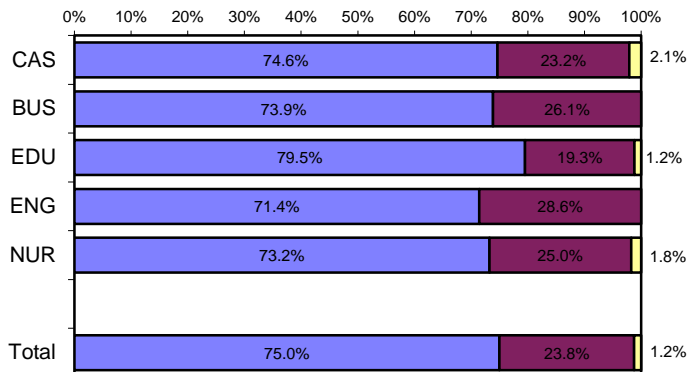
Developing Knowledge of Scientific and Technological Developments



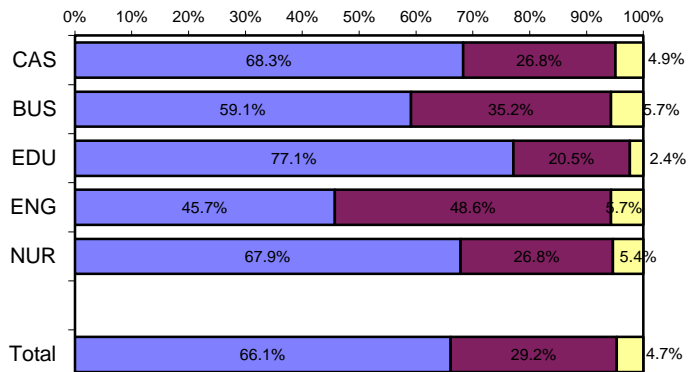
Helpfulness of University Experiences in:

■ Very to Extremely Helpful
 ■ Slightly to Moderately Helpful
 ■ Not Helpful

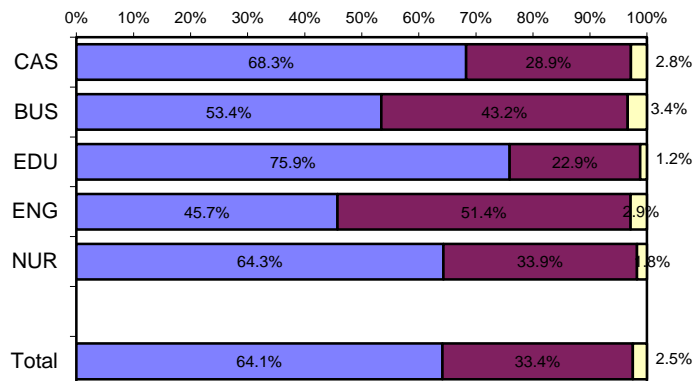
Developing Critical Thinking Ability



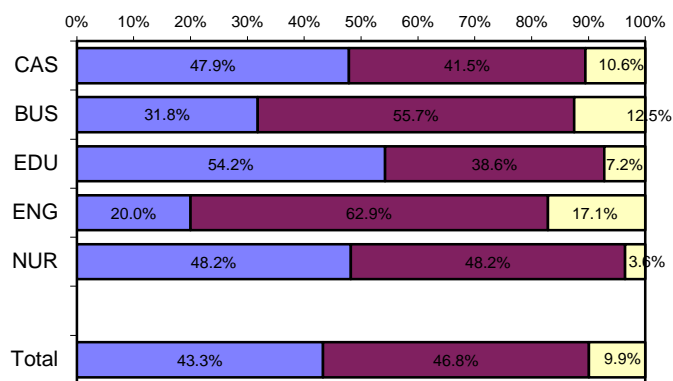
Developing Sense of Ethics



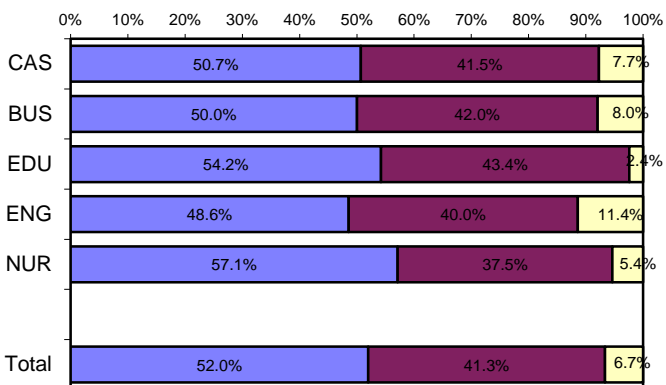
Understanding People with Different Backgrounds



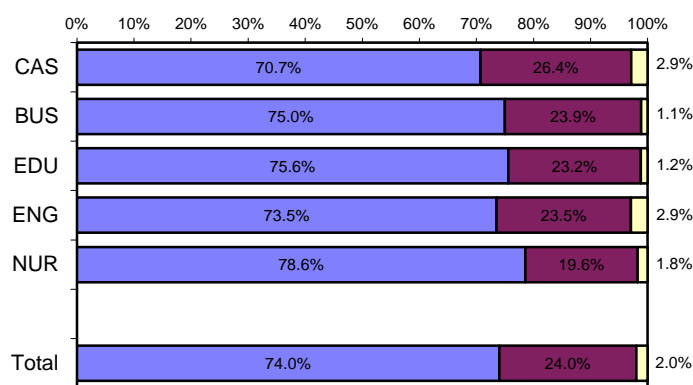
Becoming a More Active Citizen



Improving Quality of Life (aside from financial benefits)



Developing Reasoning Skills



Appendix A

Sample Questionnaire

SOUTHERN ILLINOIS UNIVERSITY EDWARDSVILLE

SURVEY OF 2013 BACCALAUREATE GRADUATES ONE YEAR AFTER GRADUATION

Most of the questions in this survey can be answered simply by circling the appropriate number. We hope you will give us your help and valuable input so that we can design programs that better serve the needs of SIUE students. PLEASE ANSWER THESE QUESTIONS ONLY IN REGARD TO THE SIUE UNDERGRADUATE DEGREE YOU RECEIVED LAST YEAR. Your individual responses to this questionnaire will be kept completely confidential. Thank you for your cooperation. Please return this survey in the envelope provided.

I. Employment

1. Are you currently employed (including self-employed)?

- | | |
|------------------|--|
| 1 Yes, full-time | 3 No, but <u>am</u> seeking employment |
| 2 Yes, part-time | 4 No, and <u>am not</u> seeking employment |

If you are NOT employed (responses 3 and 4), skip to *Section II*.

2. What is the Zip Code of your place of employment (e.g., your actual workplace, not corporate headquarters)? _____

3. How would you classify your primary employer?

- | | |
|--|--|
| 1 Self-employed or private practice | 6 Health agency (e.g., hospital, clinic) |
| 2 Business (industrial, commercial or service) | 7 Federal, state, or local government |
| 3 Professional firm (e.g., engineering, law) | 8 Armed services |
| 4 College or university | 9 Non-profit (non-government) |
| 5 Elementary/secondary school (including cooperatives) | 10 Other (please specify) _____ |

4. How satisfied are you with your current job?

- 1 Very Satisfied 2 Satisfied 3 Somewhat Satisfied 4 Somewhat Dissatisfied 5 Dissatisfied 6 Very Dissatisfied

5. How closely related is your current job to your bachelor's degree major?

- 1 Closely Related 2 Related 3 Unrelated

If you marked "3" (unrelated), is this by choice?

- 1 Yes 2 No

6. When did you secure your first job following receipt of your bachelor's degree?

- 1 Held the same job while enrolled
2 Secured job by time of graduation
3 Secured job after graduation

If you marked "3," how many months after graduation did you secure employment?

- | | | |
|--------------------------|--------------------------|----------------------|
| 1 Less than 1 month | 3 Between 3 and 6 months | 5 More than 9 months |
| 2 Between 1 and 3 months | 4 Between 6 and 9 months | |

7. What is your annual earned income before taxes in your current job? _____

8. In general, how well did your bachelor's degree prepare you for your present job?

- 1 Very Well 2 Well 3 Adequately 4 Inadequately 5 Poorly 6 Very poorly

9. Please circle on the lists below both your primary **occupation**¹ (what you do) and the **industry** in which you are employed (where you do it). Although some occupations typically work within one industry, they may be employed in other industries also. An example would be a school nurse — Health: Registered Nurses (11) in Educational Services (15). Examples of the types of occupations contained in each category are provided in italics.

Please write in your actual job title _____ (optional)

Circle One

Occupational Categories

- | | |
|---|---|
| <p>01. Management (<i>such as top executives; marketing, P.R., finance, human resources, administrative services, purchasing, & sales managers; educational administrators; health administrators</i>)</p> <p>02. Business Operations (<i>such as buyers & purchasing agents; insurance claims adjusters/examiners; human resources, training, & labor relations specialists; management analysts</i>)</p> <p>03. Financial Specialists (<i>such as accountants, assessors, appraisers, financial & credit analysts/advisors, loan counselors/officers</i>)</p> <p>04. Computer Specialists (<i>such as computer & information scientists, programmers, software specialists, database & network administrators and analysts</i>)</p> <p>05. Mathematical Scientists and Technicians (<i>such as mathematicians, statisticians, actuaries & mathematical technicians</i>)</p> <p>06. Architects, Surveyors, and Cartographers</p> <p>07. Engineers and Related Technicians (<i>such as agricultural, civil, computer hardware, electrical, industrial, mechanical, materials & construction engineers & technicians</i>)</p> <p>08. Life and Physical Scientists and Technicians (<i>such as agricultural & food scientists, biologists, medical scientists, chemists, physicists, atmospheric & environmental scientists, and related technicians</i>)</p> <p>09. Social Scientists (<i>such as economists, psychologists, market & survey researchers, geographers, historians, sociologists, anthropologists, political scientists & urban planners</i>)</p> <p>10. Health: Doctors (<i>such as physicians & surgeons, dentists, veterinarians, optometrists, podiatrists, and chiropractors</i>)</p> <p>11. Health: Registered Nurses</p> <p>12. Health: Therapists (<i>such as occupational, physical, recreational, and speech therapists</i>)</p> <p>13. Health: Other Health Practitioners, Professionals, and Support Workers (<i>such as pharmacists, dieticians, physician assistants, and all other technicians/assistants/aides</i>)</p> <p>14. Community and Social Service (<i>such as counselors, social workers, community & religious workers, probation officers</i>)</p> <p>15. Legal: Attorneys/Judges</p> <p>16. Legal: Legal Support Workers</p> <p>17. Education : Early Childhood Teachers (<i>such as day care, pre-school, and kindergarten teachers</i>)</p> <p>18. Education: Elementary School Teachers</p> <p>19. Education: Middle School Teachers</p> | <p>20. Education: Secondary School Teachers</p> <p>21. Education: Special Education Teachers</p> <p>22. Education: Other, <u>except</u> Administrators (see 01) (<i>such as postsecondary teachers; vocational teachers; teaching & research assistants; other teachers, trainers, & assistants</i>)</p> <p>23. Library Occupations (<i>such as librarians, archivists, curators, and library technicians</i>)</p> <p>24. Arts and Design Workers (<i>such as designers and fine & craft artists</i>)</p> <p>25. Entertainers, Performers, Sports and Related Workers (<i>such as musicians, singers, dancers, actors, producers, directors, composers, athletes, coaches and referees</i>)</p> <p>26. Media and Communication Workers (<i>such as writers & editors, announcers, news analysts & reporters, public relations specialists, and media & communications equipment workers</i>)</p> <p>27. Sales (<i>such as real estate, retail, insurance & securities sales agents, wholesale & manufacturing sales representatives, telemarketers</i>)</p> <p>28. Office and Administration (<i>such as clerical & support personnel, clerks, tellers, distribution workers</i>)</p> <p>29. Protective Services (<i>such as firefighters, correctional officers, police, life guards, security guards, investigators</i>)</p> <p>30. Food Preparation and Serving (<i>such as cooks, bartenders, food service workers & servers</i>)</p> <p>31. Building and Grounds Cleaning and Maintenance (<i>such as janitors, cleaners, landscaping & grounds keeping laborers</i>)</p> <p>32. Personal Care and Services (<i>such as flight attendants, child care workers, hairstylists & personal care workers, recreation workers, hotel & travel industry workers</i>)</p> <p>33. Farming, Fishing, and Forestry (<i>such as farmworkers, animal care workers, foresters, loggers</i>)</p> <p>34. Construction and Extractive (<i>such as carpenters; electricians; painters, construction, oil & mining workers; plumbers</i>)</p> <p>35. Installation, Maintenance, and Repair (<i>such as telecommunications workers; auto repairers; heating, air conditioning, and refrigeration mechanics and installers</i>)</p> <p>36. Production (<i>such as electrical & electronic equipment assemblers; food, metal, plastic, printing, & photography industry technicians & workers</i>)</p> <p>37. Transportation and Material Moving (<i>such as pilots, drivers, air traffic controllers</i>)</p> <p>38. Military (<i>such as officers & enlisted personnel</i>)</p> |
|---|---|

Circle One

Industrial Categories

- | | | |
|---|---|--|
| <p>01 Agriculture, Forestry, and Fishing</p> <p>02 Mining</p> <p>03 Utilities</p> <p>04 Construction</p> <p>05 Manufacturing</p> <p>06 Wholesale Trade</p> <p>07 Retail Trade</p> <p>08 Transportation</p> <p>09 Information</p> | <p>10 Finance and Insurance</p> <p>11 Real Estate and Rental and Leasing</p> <p>12 Professional, Scientific and Technical Services</p> <p>13 Management of Companies and Enterprises</p> <p>14 Administrative and Support, Waste Management & Remediation Services</p> <p>15 Educational Services</p> | <p>16 Health Care and Social Assistance</p> <p>17 Arts, Entertainment and Recreation</p> <p>18 Accommodations and Food Services</p> <p>19 Other Services (except Public Administration)</p> <p>20 Public Administration</p> |
|---|---|--|

¹For some occupations, such as doctors, the occupation is not appropriate for students one year after earning a baccalaureate degree. This complete listing is also used for surveys of alumni five-years and nine-years after graduation.

II. Education

10. Have you enrolled in a college or university since earning your bachelor's degree?

- 1 Yes, full-time 2 Yes, part-time 3 No

If you have NOT enrolled in a college or university (response "3"), skip to *Section III*.

11. Are you pursuing (or have you completed) an additional degree since earning your bachelor's?

- 1 Yes 2 No (If your answer is "no," skip to *Section III*.)

If you are pursuing (or have completed) another degree, please indicate which degree below:

- | | |
|--|--|
| 1 Associate's | 6 Health Professional (dentistry, pharmacy, podiatry, optometry, etc.) |
| 2 Second Bachelor's | 7 Theology/Divinity |
| 3 Academic Master's (MA, MS, MEd, etc.) | 8 Law (LLB, JD) |
| 4 Professional Master's (MBA, MSW, MFA, MPA, etc.) or Education Specialist | 9 Doctorate (PhD, EdD, DA, DBA, etc.) |
| 5 Medicine (MD, DO) | 10 Other, please specify: _____ |

12. In general, how well did your bachelor's degree prepare you for your additional degree program?

- 1 Very well 2 Well 3 Adequately 4 Inadequately 5 Poorly 6 Very poorly

III. Satisfaction

13. What is your present attitude towards the University?

- 1 Strongly Positive 2 Positive 3 Somewhat Positive 4 Somewhat Negative 5 Negative 6 Strongly Negative

14. What is your present attitude towards your bachelor's degree major?

- 1 Strongly Positive 2 Positive 3 Somewhat Positive 4 Somewhat Negative 5 Negative 6 Strongly Negative

IV. Educational Practices: *The questions below will provide feedback to help the University improve undergraduate education. Please respond to each question by evaluating your program as a whole.*

In my major degree program, --	Very Often	Often	Sometimes	Infrequently	Never
15. professors were accessible outside of class.	1	2	3	4	5
16. I was expected or required to work cooperatively with other students on projects, homework, and assignments.	1	2	3	4	5
17. professors encouraged me to challenge my own ideas, the ideas of other students, and those presented in readings and other course materials.	1	2	3	4	5
18. professors used appropriate teaching activities to help me learn.	1	2	3	4	5
19. professors' expectations for the quality of student work was high.	1	2	3	4	5
20. professors provided me with timely feedback on my performance.	1	2	3	4	5
21. professors encouraged students' questions and discussion in class.	1	2	3	4	5
22. I spent the necessary time and energy to come to class prepared.	1	2	3	4	5

V. Program Quality

23. How would you rate the quality of your major degree program concerning the:

	Excellent	Good	Fair	Poor
A. Number of courses offered in your major for you to complete your program in a reasonable amount of time.	1	2	3	4
B. Classes being offered at convenient times.	1	2	3	4
C. Classes being offered in a logical sequence.	1	2	3	4

24. How would you rate the quality of the faculty in your major degree program: 1 2 3 4

25. Were the academic standards in grading students by faculty in your degree program:

- 1 Too High 2 About Right 3 Too Low

VI. Educational Effectiveness

26. Listed below are some abilities often mentioned as important for personal and professional success in the 21st century. In your view, how effective were your University experiences in —

	Extremely Helpful	Very Helpful	Moderately Helpful	Slightly Helpful	Not Helpful
A. helping you to better develop your critical thinking ability?	1	2	3	4	5
B. helping you to better develop your sense of ethics?	1	2	3	4	5
C. contributing to a greater understanding of people with different backgrounds, habits, values, appearances, and abilities?	1	2	3	4	5
D. helping you to become a more active citizen?	1	2	3	4	5
E. improving the quality of your life aside from financial benefits?	1	2	3	4	5
F. helping you to better develop your reasoning skills?	1	2	3	4	5
G. helping you to better develop your capacity to view problems from different perspectives?	1	2	3	4	5
H. helping you to better develop your ability to solve problems?	1	2	3	4	5
I. helping you to better develop your ability to make informed decisions as a citizen?	1	2	3	4	5
J. helping you to better develop your writing skills?	1	2	3	4	5
K. helping you to better develop your oral communication skills?	1	2	3	4	5
L. helping you to better develop your knowledge of scientific and technological developments?	1	2	3	4	5

27. My SIUE undergraduate education broadened my interest in issues beyond the subjects in my major.

1 Strongly Agree 2 Agree 3 Neutral 4 Disagree 5 Strongly Disagree

28. How important has your college education been to your —

	Very Important	Moderately Important	Slightly Important	Not Important
A. Personal Life	1	2	3	4
B. Community Life	1	2	3	4
C. Professional Life	1	2	3	4

29. How would you rate the quality of education that you received from SIUE relative to the education that your friends and colleagues have received from other colleges or universities?

1 Among the Best 2 Above Average 3 Average 4 Below Average 5 Among the worst

30. Please indicate your involvement with each of the following since completing your bachelor's degree:

	Currently Involved	Have Been Involved	Never Involved
A. Organized, formal learning that is career-related (non-degree)	1	2	3
B. Personal enrichment studies	1	2	3
C. Professional activities or organizations	1	2	3
D. Volunteer work / community service activities or organizations	1	2	3
E. Social/recreational activities or organizations	1	2	3
F. Political activities or organizations	1	2	3
G. Religious/ethical activities or organizations	1	2	3
H. Support or participation in the Arts (<i>music, drama, dance, art</i>)	1	2	3
I. Reading books not directly related to your job	1	2	3

VII. Comments