

Southern Illinois University at Edwardsville
Survey of 2014 Baccalaureate Graduates -- One Year Out

Survey Results for Schools

June 2016

Survey Administered By
The Office of Undergraduate Assessment and Program Review

Survey Results Compiled By
The Office of Institutional Research and Studies

Southern Illinois University at Edwardsville Survey of 2014 Baccalaureate Graduates -- One Year Out

Contents

Introduction

Methodology

Survey Population and Respondents

- Charts: *2014 Baccalaureate Recipients, Profile*
- \$ *Gender*
 - \$ *Race/Ethnic*
 - \$ *Age at Graduation*
 - \$ *Matriculation Status*
 - \$ *Time to Degree for New Freshmen*
 - \$ *Time to Degree for New Transfers*

- Table: *Comparison of All Graduates to Survey Respondents*

Survey Results

- Charts: *2014 Baccalaureate Graduates One Year Out, Satisfaction*
- \$ *Present Attitude Toward the University*
 - \$ *Present Attitude Towards Alumni Bachelor's Degree Major*
 - \$ *Quality of SIUE Education Relative to That of Friends at Other Schools*

- 2014 Baccalaureate Graduates One Year Out, Additional Education*
- \$ *Enrolled Since Bachelors Degree*
 - \$ *How Well Bachelor's Degree Prepared Alumni for Additional Degree*

- 2014 Baccalaureate Graduates One Year Out, Employment*
- \$ *Employment Status*
 - \$ *Place of Employment*
 - \$ *Job Relation to Major*
 - \$ *Job Satisfaction*
 - \$ *How Well Bachelor's Degree Program Prepared Alumni for Present Job*
 - \$ *Mean Salary of Alumni Employed Full Time*

- Helpfulness of University Experiences in:*
- \$ *Developing Critical Thinking Ability*
 - \$ *Developing Sense of Ethics*
 - \$ *Understanding People with Different Backgrounds*
 - \$ *Becoming a more Active Citizen*
 - \$ *Improving Quality of Life (aside from financial benefits)*
 - \$ *Developing Reasoning Skills*
 - \$ *Viewing Problems from Different Perspectives*
 - \$ *Developing Ability to Solve Problems*
 - \$ *Making Informed Decisions as a Citizen*

- \$ Developing Writing Skills*
- \$ Developing Oral Communication Skills*
- \$ Developing Knowledge of Scientific and Technological Developments*

Tables:

<i>Part I</i>	<i>Employment Questions</i>
<i>Part II</i>	<i>Education Questions</i>
<i>Part III</i>	<i>Satisfaction Questions</i>
<i>Part IV</i>	<i>Educational Practices Questions</i>
<i>Part V</i>	<i>Program Quality Questions</i>
<i>Part VI</i>	<i>Educational Effectiveness Questions</i>

Questionnaire

Southern Illinois University Edwardsville Survey of 2014 Baccalaureate Graduates -- One Year Out

Introduction

This one-year out baccalaureate survey was done to provide data for the University's undergraduate program reviews and other planning uses.

After the first six years, the surveys were reviewed and changed, modifying some questions and value scales, and adding some additional questions.

The current survey was administered during the Spring and Fall of 2015 to calendar year 2014 baccalaureate graduates of SIUE. The questionnaire includes 30 questions separated in six themed parts - Employment, Education, Satisfaction, Educational Practices, Program Quality, and Educational Effectiveness Questions. The sixth section of the survey includes space for any comment the survey participant wishes to leave. See Appendix A for a survey form

Methodology

The survey questionnaire and a cover letter were adapted from the questionnaire and letter developed for previous surveys. SIUE Alumni Services provided current addresses for calendar year 2014 graduates as determined from institutional records. The survey was distributed in April and May 2015 to May 2014 baccalaureate graduates and in October and December 2015 to August 2014 and December 2014 baccalaureate graduates. Each envelope included a cover letter, a questionnaire, and a postage-paid, pre-addressed return envelope. Each questionnaire was stamped with a sequential, identifying number which was also stamped on a listing of the graduates (this aided in identifying the surveys when returned).

Surveys were mailed first class to the 1,225 May 2014 baccalaureate graduates, for whom addresses were available on April 3, 2015. On May 1, a second wave mailing of the surveys was sent to the 1,072 remaining non-respondents.

The second distribution began on November 5, 2015 to the 878 August and December 2014 baccalaureate graduates with known addresses. Surveys were mailed first class to this group as well. A second wave mailing of the survey was sent to 761 non-responders on December 9, 2015.

Returned surveys began arriving in mid-April and continued through the summer and fall, with a few arriving as late as the end of May 2016. As the surveys came in, each was matched with the corresponding stamped listing. The students' names were then checked against the alphabetic list of alumni to verify (or, if the alumnus chose not to provide the identification number, to obtain) the student identification number. The student identification number was the key which allowed merging of survey data with administrative records (e.g., biographic, graduation, matriculation, and enrollment information).

Southern Illinois University Edwardsville
Survey of 2014 Baccalaureate Graduates -- One Year Out

Survey Population and Respondents

	Number of Graduates
2014 Baccalaureate Degrees	2,185
Less persons who received 2 baccalaureate degrees	16
2014 Baccalaureate Graduates	2,169
Less Graduates with No Address Available *	66
Graduates Surveyed	2,103
Less Non-Deliverable Surveys	78
Less Non-Responding Graduates	1,587
Survey Respondents	438
Gross Response Rate (Respondents/Total Surveyed)	20.83%
Adjusted Response Rate (Respondents/Delivered Surveys)	21.63%

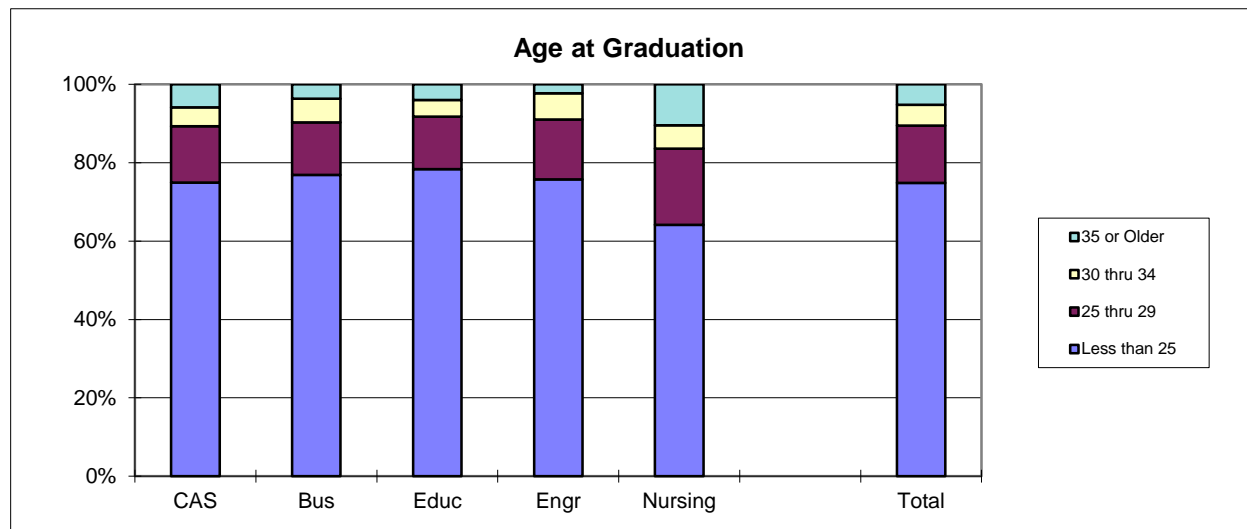
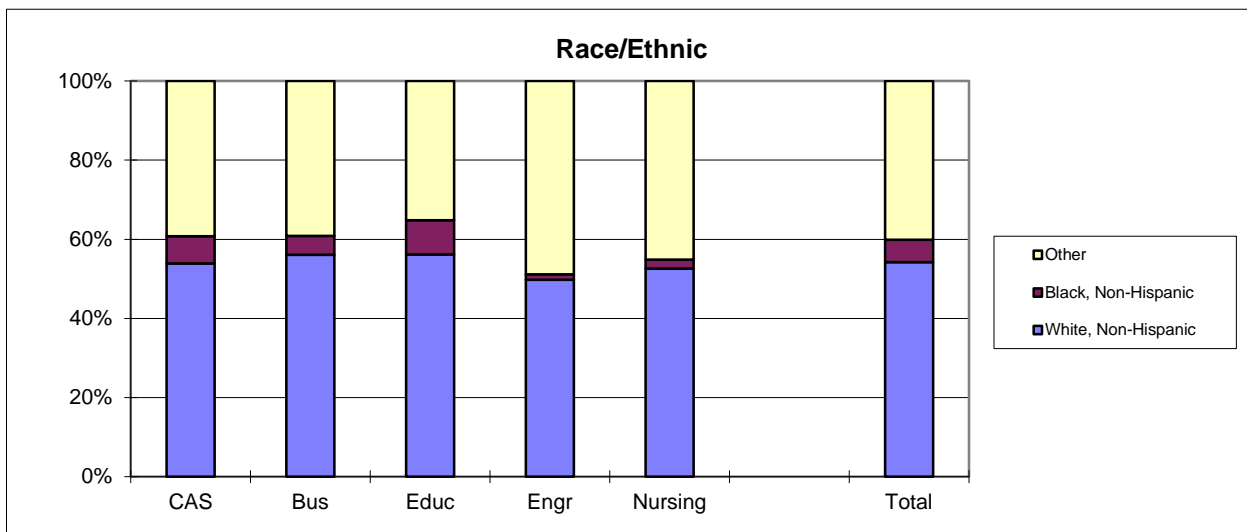
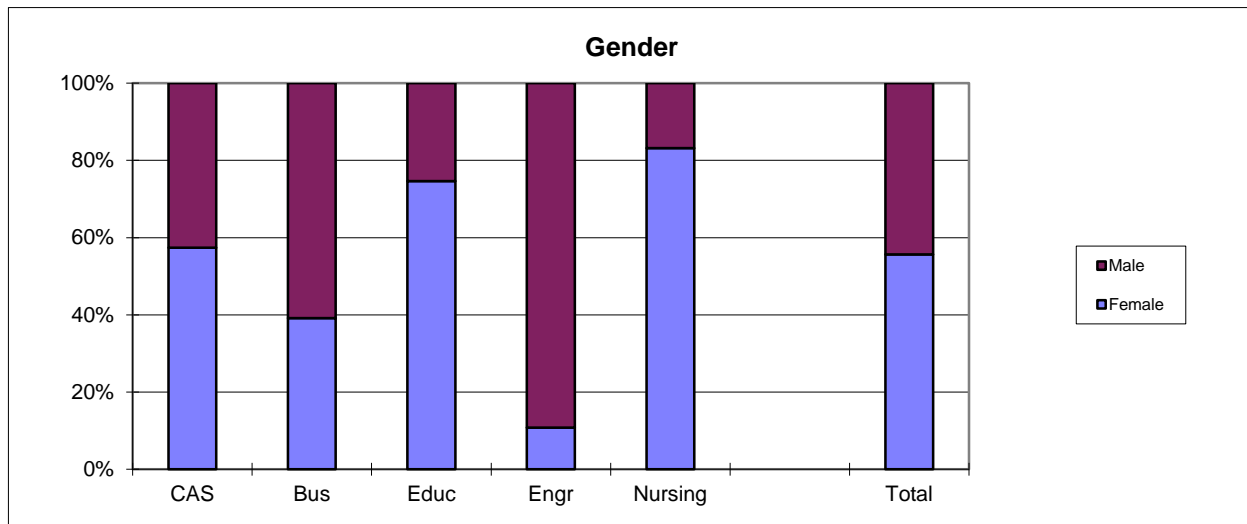
* Includes deceased alumni, foreign addresses and known bad addresses.

Southern Illinois University Edwardsville
Survey of 2014 Baccalaureate Graduates -- One Year Out

Comparison of All Graduates to Survey Respondents

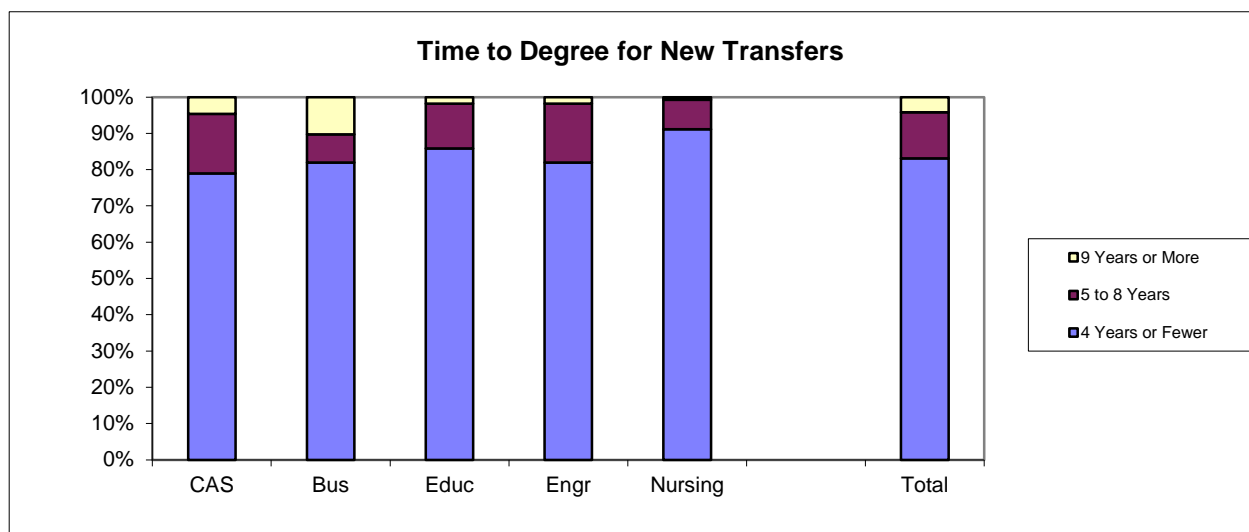
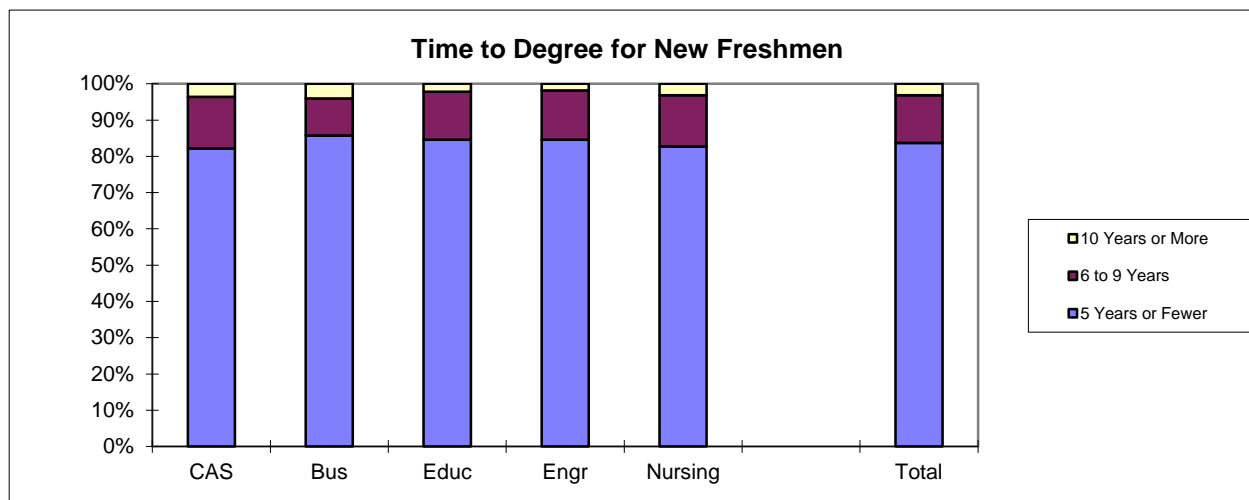
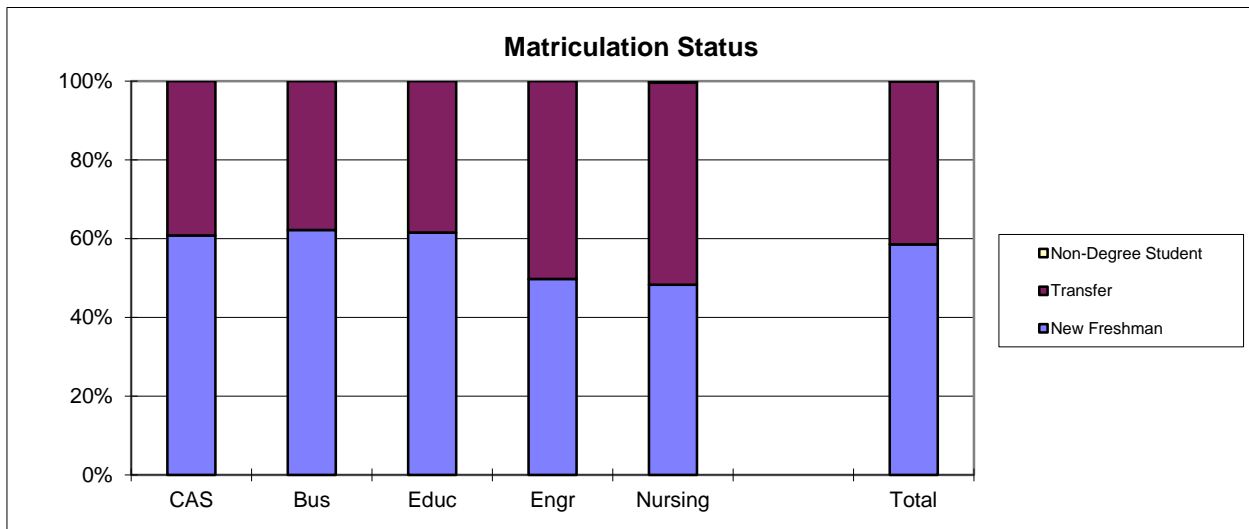
	All Baccalaureate Graduates		One Year Out Survey Respondents	
	Number	Percent	Number	Percent
Total	2169	100.0%	438	100.0%
Female	1207	55.6%	281	64.2%
Male	962	44.4%	157	35.8%
Missing Data	0	0.0%	0	0.0%
White, Non-Hispanic	1176	54.2%	263	60.0%
Black, Non-Hispanic	123	5.7%	12	2.7%
Asian/Pacific Islander	24	1.1%	4	0.9%
American Indian/Alaskan Native	3	0.1%	0	0.0%
Hispanic	27	1.2%	3	0.7%
Non-Resident Alien	30	1.4%	0	0.0%
Missing Data	786	36.2%	156	35.6%
Age at Graduation	range = 20 to 67 median = 23		range = 20 to 59 median = 23	
Bachelor of Science	1718	79.2%	360	82.2%
Bachelor of Music	10	0.5%	2	0.5%
Bachelor of Arts	281	13.0%	40	9.1%
Bachelor of Fine Arts	18	0.8%	3	0.7%
Bachelor of Sci in Accountancy	105	4.8%	28	6.4%
Bachelor of Liberal Studies	7	0.3%	1	0.2%
Bachelor of Social Work	30	1.4%	4	0.9%
Missing Data	0	0.0%	0	0.0%
Graduated Spring 2014	1280	59.0%	256	58.4%
Graduated Summer 2014	265	12.2%	38	8.7%
Graduated Fall 2014	624	28.8%	144	32.9%
Missing Data	0	0.0%	0	0.0%
Degree from College of Arts and Sciences	787	36.3%	147	33.6%
Degree from School of Business	442	20.4%	87	19.9%
Degree from School of Education, Health and Human Behavior	449	20.7%	81	18.5%
Degree from School of Engineering	223	10.3%	53	12.1%
Degree from School of Nursing	268	12.4%	70	16.0%
Missing Data	0	0.0%	0	0.0%
Matriculated as a New Freshman	1254	57.8%	264	60.3%
Matriculated as a Transfer	886	40.8%	166	37.9%
Matriculated as a Non-Degree Student	1	0.0%	0	0.0%
Missing Data	28	1.3%	8	1.8%
Time to Degree for New Freshmen				
3 Years or Fewer	76	6.1%	14	5.3%
4 Years	646	51.5%	150	56.8%
5 Years	328	26.2%	59	22.3%
6 Years	103	8.2%	18	6.8%
7 Years	34	2.7%	7	2.7%
8 Years	15	1.2%	4	1.5%
9 Years	12	1.0%	3	1.1%
10 Years	9	0.7%	5	1.9%
11 Years or More	31	2.5%	4	1.5%
Missing Data	0	0.0%	0	0.0%
Time to Degree for Transfers				
2 or Fewer Years	265	29.9%	55	33.1%
3 Years	323	36.5%	57	34.3%
4 Years	148	16.7%	25	15.1%
5 Years	54	6.1%	11	6.6%
6 Years	27	3.0%	6	3.6%
7 Years	20	2.3%	2	1.2%
8 Years	12	1.4%	3	1.8%
9 Years	7	0.8%	1	0.6%
10 Years or More	30	3.4%	6	3.6%
Missing Data	0	0.0%	0	0.0%
Graduating GPA (4 point scale)	Mean = 3.202 Std Dev = 0.437 Maximum = 4.000 Minimum = 2.013 N = 2169		Mean = 3.268 Std Dev = 0.421 Maximum = 4.000 Minimum = 2.136 N = 438	
5/31/2016				

2014 Baccalaureate Recipients Profile



2014 Baccalaureate Recipients

Profile, cont.



Southern Illinois University Edwardsville
Survey of 2014 Baccalaureate Graduates -- One Year Out

Comparison of All Graduates to Survey Respondents

School Detail		All Graduates					Total
		CAS	BUS	EDU	ENG	NUR	
Total		787	442	449	223	268	2169
Female		57.4%	39.1%	74.6%	10.8%	83.2%	55.6%
Male		42.6%	60.9%	25.4%	89.2%	16.8%	44.4%
Missing Data		0.0%	0.0%	0.0%	0.0%	0.0%	0.0%
White, Non-Hispanic		53.9%	56.1%	56.1%	49.8%	52.6%	54.2%
Black, Non-Hispanic		6.9%	4.8%	8.7%	1.3%	2.2%	5.7%
Asian/Pacific Islander		0.8%	2.5%	0.9%	0.4%	0.7%	1.1%
American Indian/Alaskan Native		0.3%	0.2%	0.0%	0.0%	0.0%	0.1%
Hispanic		1.7%	0.7%	1.3%	1.3%	0.7%	1.2%
Non-Resident Alien		0.4%	0.2%	0.0%	11.2%	0.4%	1.4%
Missing Data		36.2%	35.5%	33.0%	35.9%	43.3%	36.2%
Age at Graduation		20 to 67	20 to 50	20 to 56	20 to 49	21 to 56	20 to 67
range							
median		23.0	23.0	23.0	23.0	23.0	23.0
Bachelor of Science		62.0%	76.2%	90.2%	98.7%	100.0%	79.2%
Bachelor of Music		1.3%	0.0%	0.0%	0.0%	0.0%	0.5%
Bachelor of Arts		29.7%	0.0%	9.8%	1.3%	0.0%	13.0%
Bachelor of Fine Arts		2.3%	0.0%	0.0%	0.0%	0.0%	0.8%
Bachelor of Sci in Accountancy		0.0%	23.8%	0.0%	0.0%	0.0%	4.8%
Bachelor of Liberal Studies		0.9%	0.0%	0.0%	0.0%	0.0%	0.3%
Bachelor of Social Work		3.8%	0.0%	0.0%	0.0%	0.0%	1.4%
Missing Data		0.0%	0.0%	0.0%	0.0%	0.0%	0.0%
Graduated Spring 2014		57.2%	52.5%	67.3%	59.6%	60.8%	59.0%
Graduated Summer 2014		17.5%	11.5%	13.1%	6.7%	0.7%	12.2%
Graduated Fall 2014		25.3%	36.0%	19.6%	33.6%	38.4%	28.8%
Missing Data		0.0%	0.0%	0.0%	0.0%	0.0%	0.0%
Matriculated as a New Freshman		60.0%	61.8%	60.6%	49.3%	47.4%	57.8%
Matriculated as a Transfer		38.6%	37.6%	37.9%	49.8%	50.4%	40.8%
Matriculated as a Non-Degree Student		0.0%	0.0%	0.0%	0.0%	0.4%	0.0%
Missing Data		1.4%	0.7%	1.6%	0.9%	1.9%	1.3%
Time to Degree for New Freshmen							
3 Years or Fewer		7.2%	9.2%	4.0%	0.9%	3.9%	6.1%
4 Years		52.3%	53.8%	53.3%	50.9%	40.2%	51.5%
5 Years		22.7%	22.7%	27.2%	32.7%	38.6%	26.2%
6 Years		9.3%	5.5%	8.5%	8.2%	9.4%	8.2%
7 Years		2.8%	2.9%	2.6%	2.7%	2.4%	2.7%
8 Years		1.1%	1.1%	1.1%	2.7%	0.8%	1.2%
9 Years		1.1%	0.7%	1.1%	0.0%	1.6%	1.0%
10 Years		0.8%	0.7%	0.7%	0.9%	0.0%	0.7%
11 Years or More		2.8%	3.3%	1.5%	0.9%	3.1%	2.5%
Missing Data		0.0%	0.0%	0.0%	0.0%	0.0%	0.0%
Time to Degree for Transfers							
2 or Fewer Years		28.6%	36.1%	29.4%	17.1%	36.3%	29.9%
3 Years		31.3%	36.1%	38.2%	51.4%	34.1%	36.5%
4 Years		19.1%	9.6%	18.2%	13.5%	20.7%	16.7%
5 Years		8.6%	3.6%	4.7%	9.0%	3.0%	6.1%
6 Years		3.3%	0.6%	5.9%	2.7%	2.2%	3.0%
7 Years		3.3%	1.8%	1.2%	2.7%	1.5%	2.3%
8 Years		1.3%	1.8%	0.6%	1.8%	1.5%	1.4%
9 Years		0.3%	2.4%	0.6%	0.9%	0.0%	0.8%
10 Years or More		4.3%	7.8%	1.2%	0.9%	0.7%	3.4%
Missing Data		0.0%	0.0%	0.0%	0.0%	0.0%	0.0%
Graduating GPA (4 point scale)							
Mean		3.175	3.074	3.328	3.063	3.394	3.202
Std Dev		0.451	0.405	0.401	0.426	0.386	0.437

Southern Illinois University Edwardsville
Survey of 2014 Baccalaureate Graduates -- One Year Out

Comparison of All Graduates to Survey Respondents, cont.

		All One Year Out Survey Respondents					
School Detail		CAS	BUS	EDU	ENG	NUR	Total
Total		147	87	81	53	70	438
Female		70.7%	46.0%	87.7%	13.2%	84.3%	64.2%
Male		29.3%	54.0%	12.3%	86.8%	15.7%	35.8%
Missing Data		0.0%	0.0%	0.0%	0.0%	0.0%	0.0%
White, Non-Hispanic		63.3%	66.7%	55.6%	52.8%	55.7%	60.0%
Black, Non-Hispanic		4.8%	0.0%	6.2%	0.0%	0.0%	2.7%
Asian/Pacific Islander		0.7%	2.3%	0.0%	1.9%	0.0%	0.9%
American Indian/Alaskan Native		0.0%	0.0%	0.0%	0.0%	0.0%	0.0%
Hispanic		0.0%	1.1%	1.2%	1.9%	0.0%	0.7%
Non-Resident Alien		0.0%	0.0%	0.0%	0.0%	0.0%	0.0%
Missing Data		31.3%	29.9%	37.0%	43.4%	44.3%	35.6%
Age at Graduation		21 to 59	20 to 50	20 to 44	21 to 49	21 to 53	20 to 59
range							
median		23.0	22.0	23.0	23.0	23.0	23.0
Bachelor of Science		70.7%	67.8%	91.4%	100.0%	100.0%	82.2%
Bachelor of Music		1.4%	0.0%	0.0%	0.0%	0.0%	0.5%
Bachelor of Arts		22.4%	0.0%	8.6%	0.0%	0.0%	9.1%
Bachelor of Fine Arts		2.0%	0.0%	0.0%	0.0%	0.0%	0.7%
Bachelor of Sci in Accountancy		0.0%	32.2%	0.0%	0.0%	0.0%	6.4%
Bachelor of Liberal Studies		0.7%	0.0%	0.0%	0.0%	0.0%	0.2%
Bachelor of Social Work		2.7%	0.0%	0.0%	0.0%	0.0%	0.9%
Missing Data		0.0%	0.0%	0.0%	0.0%	0.0%	0.0%
Graduated Spring 2014		61.9%	51.7%	67.9%	50.9%	54.3%	58.4%
Graduated Summer 2014		12.2%	13.8%	8.6%	1.9%	0.0%	8.7%
Graduated Fall 2014		25.9%	34.5%	23.5%	47.2%	45.7%	32.9%
Missing Data		0.0%	0.0%	0.0%	0.0%	0.0%	0.0%
Matriculated as a New Freshman		64.6%	62.1%	63.0%	60.4%	45.7%	60.3%
Matriculated as a Transfer		32.0%	36.8%	37.0%	39.6%	51.4%	37.9%
Matriculated as a Non-Degree Student		0.0%	0.0%	0.0%	0.0%	0.0%	0.0%
Missing Data		3.4%	1.1%	0.0%	0.0%	2.9%	1.8%
Time to Degree for New Freshmen							
3 Years or Fewer		2.1%	14.8%	5.9%	0.0%	3.1%	5.3%
4 Years		57.9%	59.3%	54.9%	59.4%	50.0%	56.8%
5 Years		22.1%	13.0%	21.6%	21.9%	40.6%	22.3%
6 Years		9.5%	5.6%	7.8%	6.3%	0.0%	6.8%
7 Years		3.2%	0.0%	3.9%	6.3%	0.0%	2.7%
8 Years		1.1%	1.9%	2.0%	3.1%	0.0%	1.5%
9 Years		1.1%	1.9%	0.0%	0.0%	3.1%	1.1%
10 Years		2.1%	1.9%	2.0%	3.1%	0.0%	1.9%
11 Years or More		1.1%	1.9%	2.0%	0.0%	3.1%	1.5%
Missing Data		0.0%	0.0%	0.0%	0.0%	0.0%	0.0%
Time to Degree for Transfers							
2 or Fewer Years		36.2%	28.1%	26.7%	14.3%	50.0%	33.1%
3 Years		29.8%	46.9%	33.3%	47.6%	22.2%	34.3%
4 Years		10.6%	9.4%	30.0%	14.3%	13.9%	15.1%
5 Years		6.4%	3.1%	3.3%	14.3%	8.3%	6.6%
6 Years		6.4%	0.0%	3.3%	4.8%	2.8%	3.6%
7 Years		4.3%	0.0%	0.0%	0.0%	0.0%	1.2%
8 Years		0.0%	3.1%	3.3%	4.8%	0.0%	1.8%
9 Years		0.0%	3.1%	0.0%	0.0%	0.0%	0.6%
10 Years or More		6.4%	6.3%	0.0%	0.0%	2.8%	3.6%
Missing Data		0.0%	0.0%	0.0%	0.0%	0.0%	0.0%
Graduating GPA (4 point scale)							
Mean		3.248	3.209	3.298	3.128	3.456	3.268
Std Dev		0.413	0.433	0.425	0.390	0.381	0.421

Southern Illinois University Edwardsville
Survey of 2014 Baccalaureate Graduates -- One Year Out
Survey Responses -- Part I
Employment Questions

School Detail	CAS	BUS	EDU	ENG	NUR	Total
Number of Survey Respondents *	147	87	81	53	70	438
1. Number Employed:						
Full-time	61.6%	88.4%	50.6%	92.5%	97.1%	74.4%
Part-time	17.1%	7.0%	30.4%	3.8%	2.9%	13.6%
Not, but Seeking	4.1%	1.2%	3.8%	3.8%	0.0%	2.8%
Not, not Seeking	17.1%	3.5%	15.2%	0.0%	0.0%	9.2%
Number Responding	146	86	79	53	70	434
The remaining questions in Part I were to be answered only by respondents who were employed full-time or part-time.						
	115	82	64	51	70	382
2. Place of Employment						
Illinois	51.4%	60.8%	65.1%	54.2%	58.7%	57.5%
Missouri	38.3%	31.6%	19.0%	43.8%	34.9%	33.6%
Other	10.3%	7.6%	15.9%	2.1%	6.3%	8.9%
Number Responding	107	79	63	48	63	360
3. Classification of Primary Employer						
Self-Employed or Private Practice	1.7%	6.3%	3.1%	0.0%	0.0%	2.4%
Business (Industrial, Commercial or Service)	41.7%	60.0%	20.3%	60.8%	1.4%	37.1%
Professional Firm (e.g., Engineering, Law)	6.1%	15.0%	0.0%	21.6%	0.0%	7.9%
College or University	7.0%	1.3%	10.9%	0.0%	2.9%	4.7%
Elementary/Secondary School	10.4%	1.3%	18.8%	2.0%	0.0%	6.8%
Health Agency (e.g. Hospital, Clinic)	6.1%	2.5%	18.8%	0.0%	92.9%	22.6%
Federal, State, or Local Government	13.0%	3.8%	6.3%	11.8%	1.4%	7.6%
Armed Services	0.9%	0.0%	0.0%	0.0%	1.4%	0.5%
NonProfit (Non-Government)	3.5%	6.3%	9.4%	2.0%	0.0%	4.2%
Other	9.6%	3.8%	12.5%	2.0%	0.0%	6.1%
Number Responding	115	80	64	51	70	380
4. Job Satisfaction						
Very Satisfied	26.1%	30.5%	32.8%	51.0%	38.6%	33.8%
Satisfied	36.5%	46.3%	39.1%	29.4%	50.0%	40.6%
Somewhat Satisfied	20.0%	17.1%	15.6%	17.6%	10.0%	16.5%
Somewhat Dissatisfied	7.8%	3.7%	6.3%	2.0%	0.0%	4.5%
Dissatisfied	6.1%	1.2%	6.3%	0.0%	1.4%	3.4%
Very Dissatisfied	3.5%	1.2%	0.0%	0.0%	0.0%	1.3%
Number Responding	115	82	64	51	70	382
5. Job in Field?						
Closely Related	37.4%	46.3%	42.2%	70.6%	91.4%	54.5%
Related	23.5%	39.0%	21.9%	25.5%	8.6%	24.1%
Unrelated (choice unknown)	0.0%	0.0%	0.0%	2.0%	0.0%	0.3%
Unrelated (by choice)	13.9%	6.1%	20.3%	0.0%	0.0%	8.9%
Unrelated (not by choice)	25.2%	8.5%	15.6%	2.0%	0.0%	12.3%
Number Responding	115	82	64	51	70	382
6. Timing of Securing First Job After Degree						
Held the Same Job While Enrolled	14.8%	22.0%	21.9%	19.6%	21.4%	19.4%
Secured Job by Graduation	14.8%	28.0%	15.6%	51.0%	35.7%	26.4%
Secured Job After Graduation (timing unknown)	0.9%	0.0%	1.6%	0.0%	0.0%	0.5%
Less than 1 Month After Graduation	8.7%	6.1%	9.4%	5.9%	11.4%	8.4%
1 to 3 Months After Graduation	14.8%	15.9%	25.0%	9.8%	7.1%	14.7%
3 to 6 Months After Graduation	21.7%	22.0%	17.2%	11.8%	12.9%	18.1%
6 to 9 Months After Graduation	20.0%	3.7%	9.4%	2.0%	10.0%	10.5%
More than 9 Months After Graduation	4.3%	2.4%	0.0%	0.0%	1.4%	2.1%
Number Responding	115	82	64	51	70	382

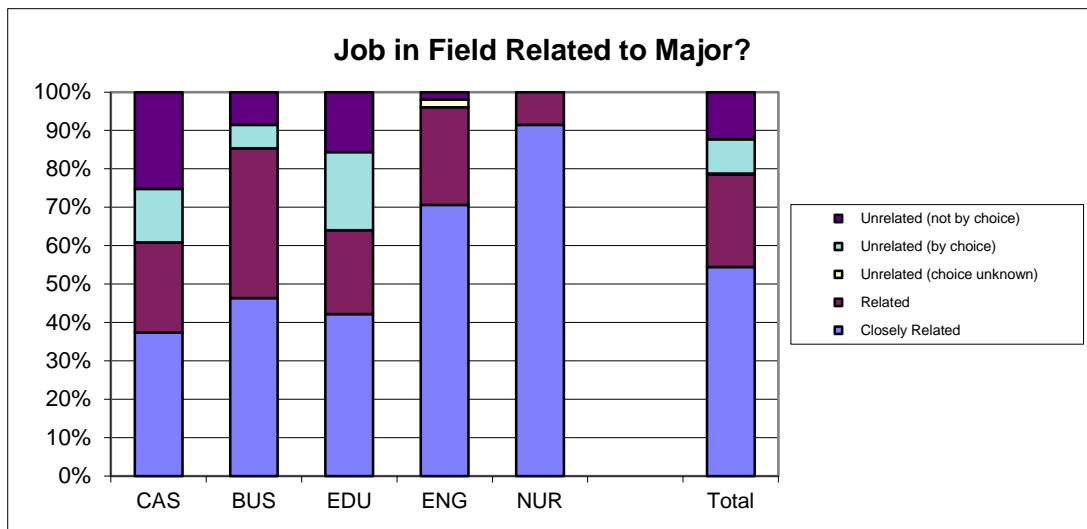
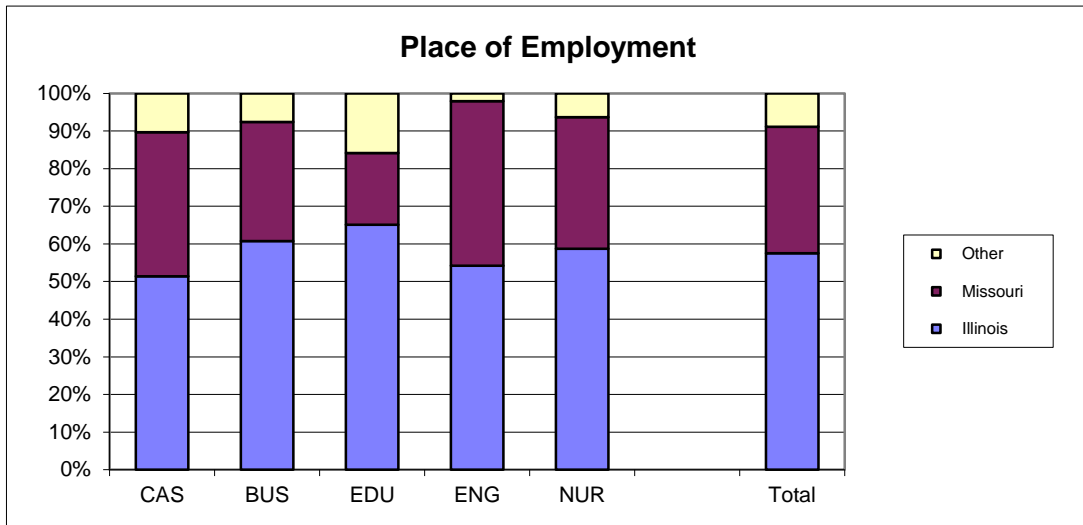
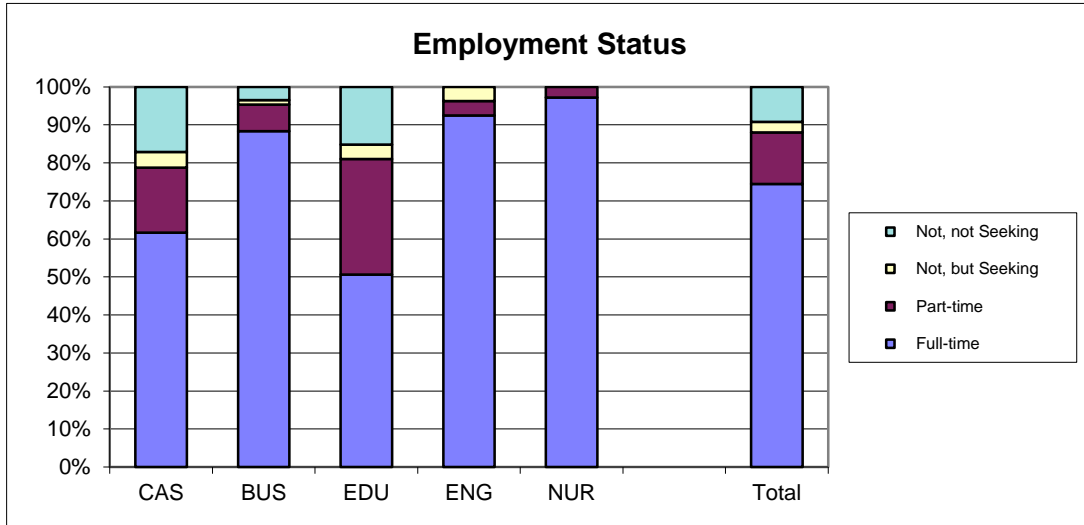
Southern Illinois University Edwardsville
Survey of 2014 Baccalaureate Graduates -- One Year Out
Survey Responses -- Part I
Employment Questions

School Detail, cont.	CAS	BUS	EDU	ENG	NUR	Total
7. Annual Earned Income in Current Job Before Taxes						
Employed Full-Time						
Less Than \$15,000	4.7%	1.4%	10.5%	0.0%	0.0%	3.0%
\$15,000 to \$19,999	3.5%	0.0%	2.6%	0.0%	0.0%	1.3%
\$20,000 to \$24,999	10.6%	5.6%	18.4%	0.0%	0.0%	6.6%
\$25,000 to \$29,999	11.8%	8.3%	10.5%	0.0%	0.0%	6.6%
\$30,000 to \$34,999	23.5%	15.3%	34.2%	0.0%	1.7%	14.9%
\$35,000 to \$39,999	12.9%	13.9%	10.5%	4.3%	11.7%	11.3%
\$40,000 or More	32.9%	55.6%	13.2%	95.7%	86.7%	56.3%
Number Responding	85	72	38	47	60	302
Mean Salary	\$34,256	\$42,294	\$29,788	\$55,811	\$47,394	\$41,575
Employed Part-Time						
Less Than \$5,000	4.5%	0.0%	9.1%	0.0%	0.0%	5.7%
5,000 to \$9,999	22.7%	33.3%	31.8%	100.0%	0.0%	30.2%
\$10,000 to \$14,999	36.4%	16.7%	31.8%	0.0%	0.0%	30.2%
\$15,000 to \$19,999	22.7%	0.0%	9.1%	0.0%	0.0%	13.2%
\$20,000 or More	13.6%	50.0%	18.2%	0.0%	100.0%	20.8%
Number Responding	22	6	22	2	1	53
Mean Salary	\$13,183	\$15,408	\$12,618	\$6,250	\$56,000	\$13,747
8. Bachelor's Degree Preparation for Job						
Very Well	18.4%	8.5%	17.5%	23.5%	39.1%	20.6%
Well	29.8%	45.1%	34.9%	37.3%	29.0%	34.8%
Adequately	36.0%	36.6%	22.2%	27.5%	26.1%	30.9%
Inadequately	8.8%	6.1%	17.5%	7.8%	4.3%	8.7%
Poorly	3.5%	1.2%	0.0%	3.9%	1.4%	2.1%
Very Poorly	3.5%	2.4%	7.9%	0.0%	0.0%	2.9%
Number Responding	114	82	63	51	69	379
9a. Primary Occupation						
Management	7.8%	9.8%	1.6%	0.0%	0.0%	4.7%
Business Operations	7.8%	13.4%	3.3%	0.0%	0.0%	5.8%
Financial Specialists	1.0%	37.8%	1.6%	0.0%	0.0%	9.0%
Computer Specialists	2.9%	8.5%	0.0%	19.6%	0.0%	5.5%
Mathematical Scientists and Technicians	0.0%	0.0%	0.0%	0.0%	0.0%	0.0%
Architects, Surveyors, and Cartographers	2.0%	0.0%	0.0%	2.0%	0.0%	0.8%
Engineers and Related Technicians	0.0%	1.2%	1.6%	68.6%	0.0%	10.1%
Life & Physical Scientists, and Technicians	8.8%	0.0%	0.0%	0.0%	0.0%	2.5%
Social Scientists	2.9%	1.2%	1.6%	0.0%	0.0%	1.4%
Health: Doctors	0.0%	0.0%	0.0%	0.0%	0.0%	0.0%
Health: Registered Nurses	0.0%	1.2%	0.0%	0.0%	100.0%	19.2%
Health: Therapists	0.0%	0.0%	4.9%	0.0%	0.0%	0.8%
Health: Oth Practitnrs, Prof.s, & Suppt Wkrs	4.9%	0.0%	13.1%	0.0%	0.0%	3.6%
Community & Social Service	2.9%	0.0%	14.8%	0.0%	0.0%	3.3%
Legal: Attorneys/Judges	1.0%	0.0%	0.0%	0.0%	0.0%	0.3%
Legal: Legal Support Workers	3.9%	0.0%	0.0%	0.0%	0.0%	1.1%
Education: Early Childhood Teachers	1.0%	0.0%	6.6%	0.0%	0.0%	1.4%
Education: Elementary School Teachers	1.0%	0.0%	9.8%	0.0%	0.0%	1.9%
Education: Middle School Teachers	2.9%	0.0%	4.9%	0.0%	0.0%	1.6%
Education: Secondary School Teachers	6.9%	0.0%	0.0%	0.0%	0.0%	1.9%
Education: Special Education Teachers	1.0%	0.0%	0.0%	0.0%	0.0%	0.3%
Education: Other, except Administrators	3.9%	3.7%	9.8%	2.0%	0.0%	3.8%
continued						

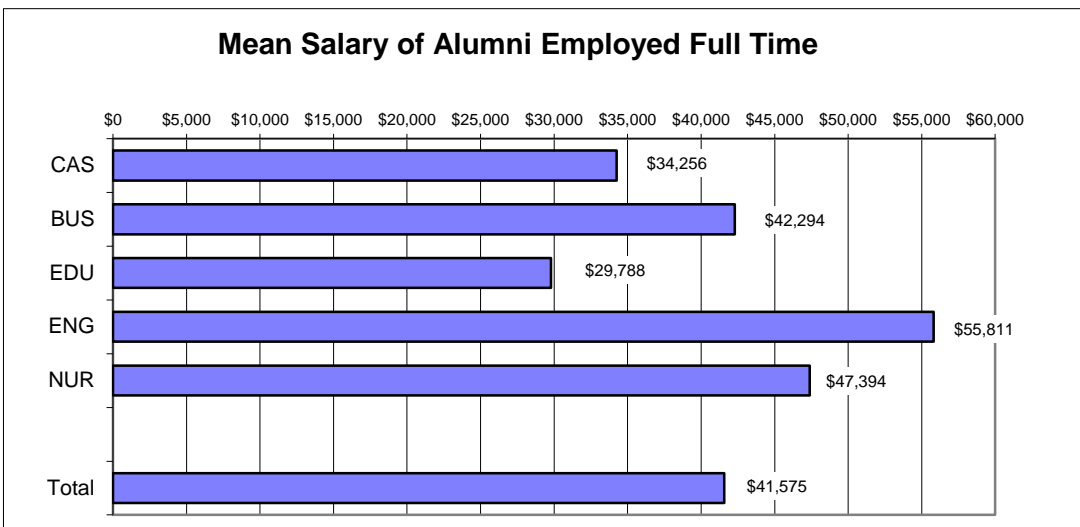
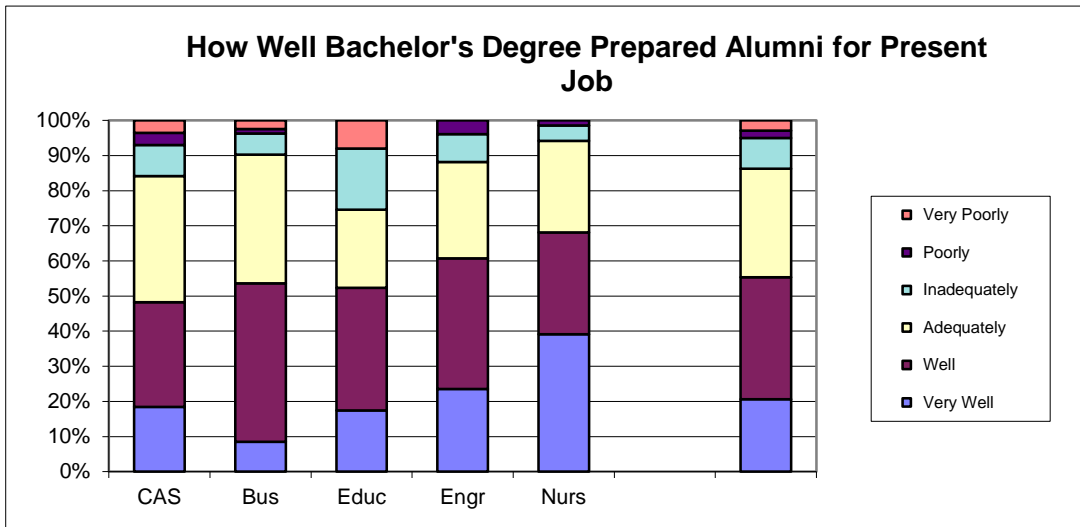
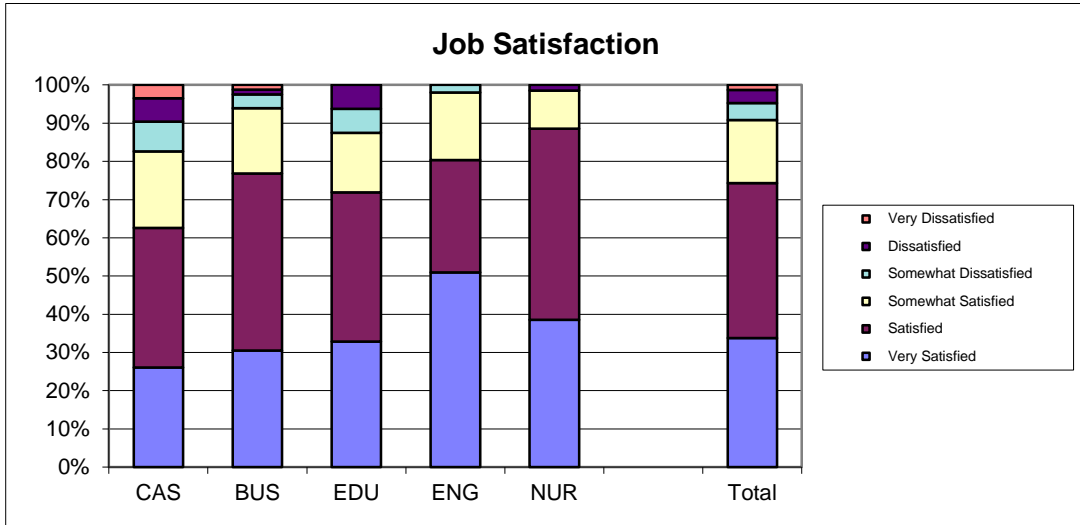
Southern Illinois University Edwardsville
Survey of 2014 Baccalaureate Graduates -- One Year Out
Survey Responses -- Part I
Employment Questions

School Detail, cont.	CAS	BUS	EDU	ENG	NUR	Total
9a. continuation of Primary Occupation						
Library Occupations	1.0%	1.2%	0.0%	0.0%	0.0%	0.5%
Art and Design Workers	3.9%	0.0%	0.0%	0.0%	0.0%	1.1%
Entertainment, Performers, Sports & Related	0.0%	1.2%	0.0%	0.0%	0.0%	0.3%
Media and Communication Workers	3.9%	0.0%	0.0%	0.0%	0.0%	1.1%
Sales	10.8%	7.3%	4.9%	0.0%	0.0%	5.5%
Office & Administration	2.0%	9.8%	6.6%	0.0%	0.0%	3.8%
Protective Services	5.9%	0.0%	1.6%	0.0%	0.0%	1.9%
Food Preparation & Serving	3.9%	0.0%	9.8%	0.0%	0.0%	2.7%
Buildings & Grounds Maintenance	0.0%	0.0%	0.0%	0.0%	0.0%	0.0%
Personal Care and Service	0.0%	0.0%	1.6%	0.0%	0.0%	0.3%
Farming, Fishing, and Forestry	0.0%	0.0%	1.6%	0.0%	0.0%	0.3%
Construction & Extractive	0.0%	0.0%	0.0%	3.9%	0.0%	0.5%
Installation, Maintenance, & Repair	1.0%	3.7%	0.0%	0.0%	0.0%	1.1%
Production	2.0%	0.0%	0.0%	2.0%	0.0%	0.8%
Transportation and Material Moving	2.0%	0.0%	0.0%	2.0%	0.0%	0.8%
Military	1.0%	0.0%	0.0%	0.0%	0.0%	0.3%
Number Responding	102	82	61	51	69	365
9b. Industry						
Agriculture, Forestry, and Fishing	1.1%	3.8%	1.9%	2.1%	0.0%	1.8%
Mining	0.0%	0.0%	0.0%	2.1%	0.0%	0.3%
Utilities	2.2%	1.3%	0.0%	14.6%	0.0%	3.0%
Construction	1.1%	6.3%	0.0%	18.8%	0.0%	4.5%
Manufacturing	8.7%	8.8%	0.0%	20.8%	0.0%	7.4%
Wholesale Trade	1.1%	5.0%	0.0%	0.0%	0.0%	1.5%
Retail Trade	7.6%	3.8%	1.9%	0.0%	0.0%	3.3%
Transportation	3.3%	6.3%	0.0%	6.3%	0.0%	3.3%
Information	6.5%	1.3%	0.0%	2.1%	0.0%	2.4%
Finance & Insurance	6.5%	25.0%	3.7%	4.2%	0.0%	8.9%
Real Estate & Rental & Leasing	0.0%	0.0%	0.0%	0.0%	0.0%	0.0%
Professional, Scientific & Technical Services	17.4%	12.5%	3.7%	20.8%	0.0%	11.3%
Management of Companies & Enterprises	1.1%	3.8%	0.0%	0.0%	0.0%	1.2%
Admin & Suppt, Waste Mgmt & Remedtn Svcs	2.2%	1.3%	0.0%	0.0%	0.0%	0.9%
Educational Services	14.1%	5.0%	31.5%	0.0%	1.6%	10.4%
Health Care & Social Assistance	12.0%	5.0%	37.0%	0.0%	98.4%	28.8%
Arts, Entertainment & Recreation	5.4%	1.3%	0.0%	0.0%	0.0%	1.8%
Accommodations & Food Services	2.2%	1.3%	9.3%	0.0%	0.0%	2.4%
Other Services (except Public Admin)	7.6%	7.5%	11.1%	8.3%	0.0%	6.8%
Public Administration	0.0%	1.3%	0.0%	0.0%	0.0%	0.3%
Number Responding	92	80	54	48	63	337
6/6/2016						

2014 Baccalaureate Graduates One Year Out Employment



2014 Baccalaureate Graduates One Year Out Employment, cont.

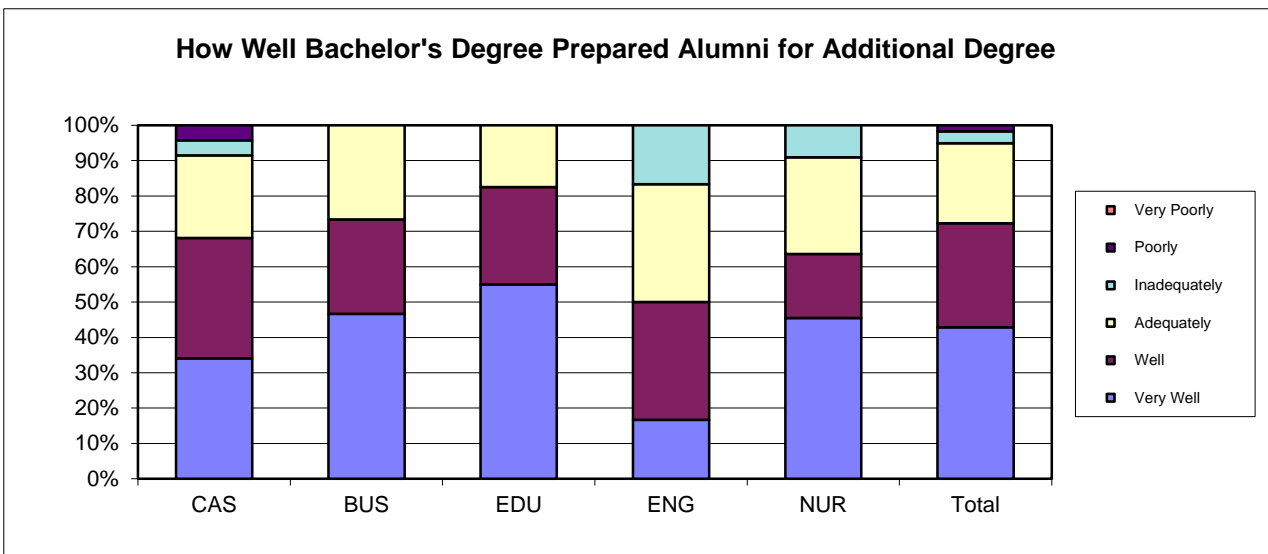
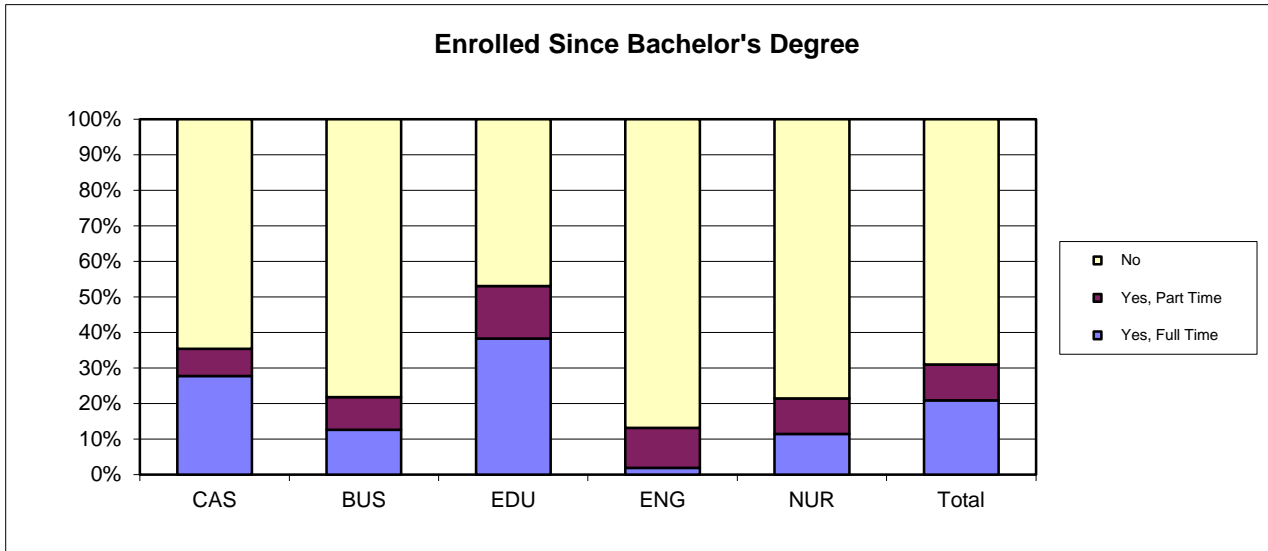


Southern Illinois University Edwardsville
Survey of 2014 Baccalaureate Graduates -- One Year Out
Survey Responses -- Part II
Education Questions

School Detail	CAS	BUS	EDU	ENG	NUR	Total
Number of Survey Respondents	147	87	81	53	70	438
10. Enrolled in College or University Since Degree?						
Yes, Full Time	27.8%	12.6%	38.3%	1.9%	11.4%	20.9%
Yes, Part Time	7.6%	9.2%	14.8%	11.3%	10.0%	10.1%
No	64.6%	78.2%	46.9%	86.8%	78.6%	69.0%
Number Responding	144	87	81	53	70	435
11. Degree?						
Yes	100.0%	100.0%	100.0%	100.0%	100.0%	100.0%
No	0.0%	0.0%	0.0%	0.0%	0.0%	0.0%
Number Responding	47	15	40	6	13	121
The remaining questions in Part II were to be answered only by respondents who were pursuing or had completed another degree.						
	47	15	40	6	13	121
11b. Pursuing or Completed Which Degree?						
Associate's	2.2%	0.0%	5.1%	0.0%	0.0%	2.5%
Second Bachelor's	6.5%	0.0%	2.6%	16.7%	0.0%	4.2%
Academic Master's (MA, MS, MEd, etc)	43.5%	13.3%	46.2%	66.7%	38.5%	41.2%
Prof. Master's or Ed Specialist	15.2%	80.0%	25.6%	0.0%	15.4%	26.1%
Medicine (MD, OD)	4.3%	0.0%	0.0%	0.0%	0.0%	1.7%
Health Prof. (dentistry, pharmacy, etc.)	8.7%	0.0%	2.6%	0.0%	15.4%	5.9%
Theology/Divinity	2.2%	0.0%	0.0%	0.0%	0.0%	0.8%
Law (LLB, JD)	8.7%	0.0%	0.0%	0.0%	0.0%	3.4%
Doctorate (PhD, EdD, DA, DBA, etc.)	4.3%	0.0%	12.8%	0.0%	15.4%	7.6%
Other	4.3%	6.7%	5.1%	16.7%	15.4%	6.7%
Number Responding	46	15	39	6	13	119
12. How Well Bach. Degree Prepared You for Additional Degree						
Very Well	34.0%	46.7%	55.0%	16.7%	45.5%	42.9%
Well	34.0%	26.7%	27.5%	33.3%	18.2%	29.4%
Adequately	23.4%	26.7%	17.5%	33.3%	27.3%	22.7%
Inadequately	4.3%	0.0%	0.0%	16.7%	9.1%	3.4%
Poorly	4.3%	0.0%	0.0%	0.0%	0.0%	1.7%
Very Poorly	0.0%	0.0%	0.0%	0.0%	0.0%	0.0%
Number Responding	47	15	40	6	11	119

6/7/2016

2014 Baccalaureate Graduates One Year Out Additional Education

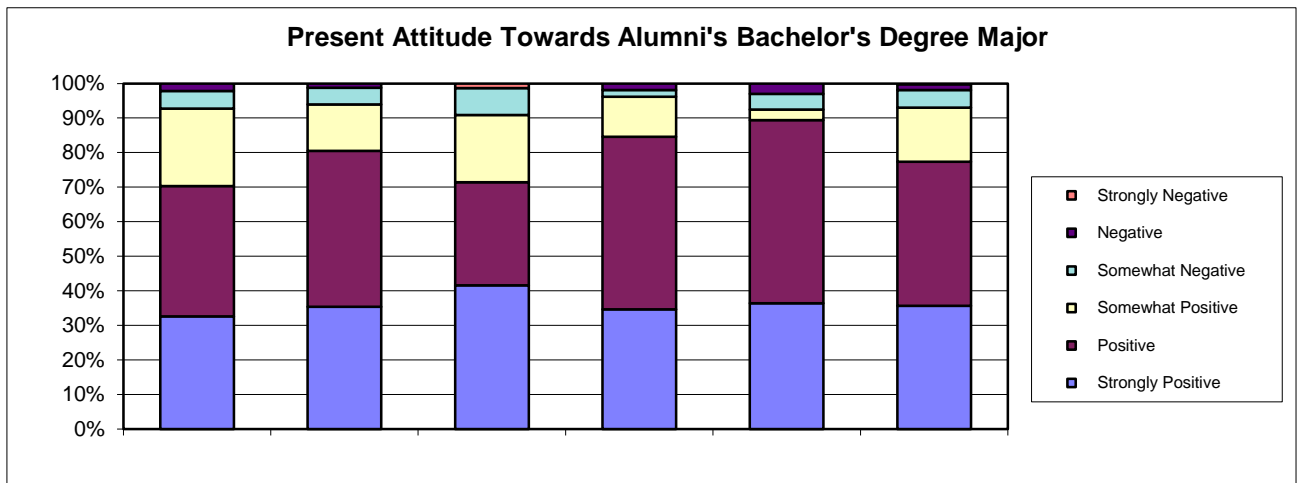
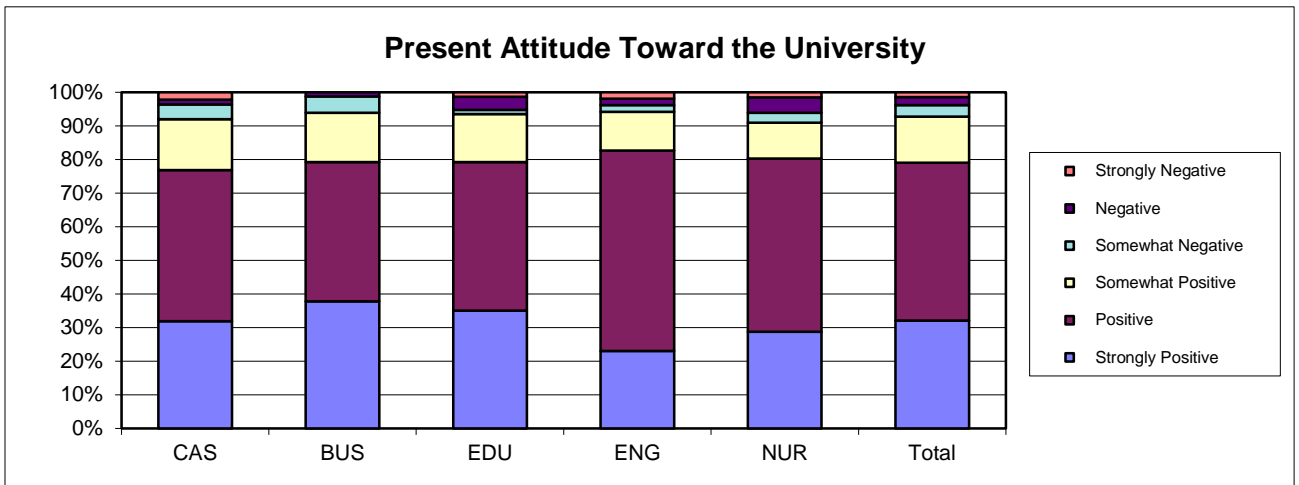


Southern Illinois University Edwardsville
Survey of 2014 Baccalaureate Graduates -- One Year Out
Survey Responses -- Part III
Satisfaction Questions

School Detail	CAS	BUS	EDU	ENG	NUR	Total
Number of Survey Respondents	147	87	81	53	70	438
13. Present Attitude Towards the University						
Strongly Positive	31.9%	37.8%	35.1%	23.1%	28.8%	32.0%
Positive	44.9%	41.5%	44.2%	59.6%	51.5%	47.0%
Somewhat Positive	15.2%	14.6%	14.3%	11.5%	10.6%	13.7%
Somewhat Negative	4.3%	4.9%	1.3%	1.9%	3.0%	3.4%
Negative	1.4%	1.2%	3.9%	1.9%	4.5%	2.4%
Strongly Negative	2.2%	0.0%	1.3%	1.9%	1.5%	1.4%
Number Responding	138	82	77	52	66	415
14. Present Attitude Towards your Bachelor's Degree Major						
Strongly Positive	32.6%	35.4%	41.6%	34.6%	36.4%	35.7%
Positive	37.7%	45.1%	29.9%	50.0%	53.0%	41.7%
Somewhat Positive	22.5%	13.4%	19.5%	11.5%	3.0%	15.7%
Somewhat Negative	5.1%	4.9%	7.8%	1.9%	4.5%	5.1%
Negative	2.2%	1.2%	0.0%	1.9%	3.0%	1.7%
Strongly Negative	0.0%	0.0%	1.3%	0.0%	0.0%	0.2%
Number Responding	138	82	77	52	66	415

6/8/2016

2014 Baccalaureate Graduates One Year Out *Satisfaction*



Southern Illinois University Edwardsville
Survey of 2014 Baccalaureate Graduates -- One Year Out
Survey Responses -- Part IV
Educational Practices Questions

School Detail	CAS	BUS	EDU	ENG	NUR	Total
Number of Survey Respondents	147	87	81	53	70	438
15. Faculty in Major Were Accessible Outside of Class						
Very Often	47.9%	36.8%	56.8%	35.8%	35.7%	43.9%
Often	45.1%	48.3%	34.6%	45.3%	54.3%	45.3%
Sometimes	5.6%	14.9%	7.4%	13.2%	8.6%	9.2%
Infrequently	1.4%	0.0%	1.2%	5.7%	1.4%	1.6%
Never	0.0%	0.0%	0.0%	0.0%	0.0%	0.0%
Number Responding	144	87	81	53	70	435
16. In Major, Student was Expected to Work Cooperatively with Other Students						
Very Often	33.1%	64.4%	54.3%	43.4%	58.6%	48.6%
Often	45.5%	33.3%	33.3%	41.5%	35.7%	38.8%
Sometimes	17.2%	2.3%	9.9%	11.3%	4.3%	10.1%
Infrequently	3.4%	0.0%	1.2%	3.8%	0.0%	1.8%
Never	0.7%	0.0%	1.2%	0.0%	1.4%	0.7%
Number Responding	145	87	81	53	70	436
17. In Major, Faculty Encouraged Student to Challenge Ideas (student's, other students, and in readings & materials)						
Very Often	42.4%	26.4%	48.1%	9.4%	34.3%	34.9%
Often	34.7%	39.1%	34.6%	41.5%	44.3%	37.9%
Sometimes	18.8%	24.1%	12.3%	32.1%	14.3%	19.5%
Infrequently	4.2%	10.3%	3.7%	15.1%	5.7%	6.9%
Never	0.0%	0.0%	1.2%	1.9%	1.4%	0.7%
Number Responding	144	87	81	53	70	435
18. In Major, Faculty Used Appropriate Teaching Activities to Help Student Learn						
Very Often	38.6%	25.3%	49.4%	24.5%	35.7%	35.8%
Often	40.7%	48.3%	39.5%	47.2%	42.9%	43.1%
Sometimes	17.2%	23.0%	9.9%	18.9%	20.0%	17.7%
Infrequently	3.4%	3.4%	1.2%	9.4%	1.4%	3.4%
Never	0.0%	0.0%	0.0%	0.0%	0.0%	0.0%
Number Responding	145	87	81	53	70	436
19. In Major, Faculty had High Expectations for Quality Of Student Work						
Very Often	42.8%	32.2%	51.3%	35.8%	47.1%	42.1%
Often	40.0%	51.7%	38.8%	41.5%	44.3%	43.0%
Sometimes	14.5%	12.6%	8.8%	13.2%	5.7%	11.5%
Infrequently	2.1%	3.4%	0.0%	9.4%	2.9%	3.0%
Never	0.7%	0.0%	1.3%	0.0%	0.0%	0.5%
Number Responding	145	87	80	53	70	435
20. In Major, Faculty Provided Timely Feedback						
Very Often	31.0%	28.7%	44.4%	19.2%	35.7%	32.4%
Often	43.4%	46.0%	38.3%	40.4%	44.3%	42.8%
Sometimes	22.8%	23.0%	17.3%	30.8%	18.6%	22.1%
Infrequently	2.8%	2.3%	0.0%	9.6%	1.4%	2.8%
Never	0.0%	0.0%	0.0%	0.0%	0.0%	0.0%
Number Responding	145	87	81	52	70	435

Southern Illinois University Edwardsville
Survey of 2014 Baccalaureate Graduates -- One Year Out
Survey Responses -- Part IV
Educational Practices Questions

School Detail, cont.	CAS	BUS	EDU	ENG	NUR	Total
21. In Major, Faculty Encouraged Students' Questions and Discussion in Class						
Very Often	52.4%	44.8%	60.5%	34.0%	52.9%	50.2%
Often	37.2%	41.4%	30.9%	47.2%	35.7%	37.8%
Sometimes	8.3%	12.6%	8.6%	15.1%	7.1%	9.9%
Infrequently	2.1%	1.1%	0.0%	3.8%	4.3%	2.1%
Never	0.0%	0.0%	0.0%	0.0%	0.0%	0.0%
Number Responding	145	87	81	53	70	436
22. In Major, Student Spent Necessary Time and Energy to Come to Class Prepared						
Very Often	51.7%	36.8%	55.6%	30.2%	54.3%	47.2%
Often	40.0%	44.8%	37.0%	58.5%	40.0%	42.7%
Sometimes	6.2%	17.2%	7.4%	9.4%	5.7%	8.9%
Infrequently	1.4%	1.1%	0.0%	1.9%	0.0%	0.9%
Never	0.7%	0.0%	0.0%	0.0%	0.0%	0.2%
Number Responding	145	87	81	53	70	436

6/9/2016

Southern Illinois University Edwardsville
Survey of 2014 Baccalaureate Graduates -- One Year Out
Survey Responses -- Part V
Program Quality Questions

School Detail	CAS	BUS	EDU	ENG	NUR	Total
Number of Survey Respondents	147	87	81	53	70	438
23A. Quality of Major in Offering Sufficient Courses						
Excellent	40.7%	35.6%	50.6%	22.6%	60.0%	42.4%
Good	38.6%	49.4%	42.0%	54.7%	35.7%	42.9%
Fair	17.9%	13.8%	3.7%	17.0%	4.3%	12.2%
Poor	2.8%	1.1%	3.7%	5.7%	0.0%	2.5%
Number Responding	145	87	81	53	70	436
23B. Quality of Major in Offering Convenient Class Times						
Excellent	24.1%	29.9%	42.0%	11.5%	47.1%	30.8%
Good	45.5%	48.3%	42.0%	55.8%	38.6%	45.5%
Fair	24.8%	20.7%	12.3%	30.8%	12.9%	20.5%
Poor	5.5%	1.1%	3.7%	1.9%	1.4%	3.2%
Number Responding	145	87	81	52	70	435
23C. Quality of Major in Offering Logical Class Sequences						
Excellent	35.7%	40.2%	48.1%	17.3%	45.7%	38.3%
Good	44.1%	41.4%	38.3%	57.7%	42.9%	43.9%
Fair	16.8%	17.2%	13.6%	23.1%	10.0%	15.9%
Poor	3.5%	1.1%	0.0%	1.9%	1.4%	1.8%
Number Responding	143	87	81	52	70	433
24 Quality of Faculty in Major						
Excellent	49.7%	51.7%	59.3%	40.4%	42.9%	49.7%
Good	42.1%	39.1%	32.1%	48.1%	45.7%	40.9%
Fair	5.5%	9.2%	4.9%	9.6%	10.0%	7.4%
Poor	2.8%	0.0%	3.7%	1.9%	1.4%	2.1%
Number Responding	145	87	81	52	70	435
25 Grading Standards in Major Were:						
Too High	2.1%	2.3%	3.8%	5.7%	10.0%	4.1%
About Right	92.5%	90.8%	93.8%	90.6%	85.7%	91.1%
Too Low	5.5%	6.9%	2.5%	3.8%	4.3%	4.8%
Number Responding	146	87	80	53	70	436

6/9/2016

Southern Illinois University Edwardsville
Survey of 2014 Baccalaureate Graduates -- One Year Out
Survey Responses -- Part VI
Educational Effectiveness Questions

School Detail	CAS	BUS	EDU	ENG	NUR	Total
Number of Survey Respondents	147	87	81	53	70	438
26. Helpfulness of University Experiences in:						
A. Developing Critical Thinking Ability						
Extremely Helpful	31.7%	20.7%	19.8%	26.4%	25.7%	25.7%
Very Helpful	41.4%	43.7%	46.9%	47.2%	50.0%	45.0%
Moderately Helpful	24.1%	23.0%	27.2%	24.5%	20.0%	23.9%
Slightly Helpful	2.8%	9.2%	3.7%	1.9%	2.9%	4.1%
Not Helpful	0.0%	3.4%	2.5%	0.0%	1.4%	1.4%
Number Responding	145	87	81	53	70	436
B. Developing Sense of Ethics						
Extremely Helpful	23.4%	29.9%	23.5%	11.3%	22.9%	23.2%
Very Helpful	44.8%	33.3%	42.0%	30.2%	50.0%	41.1%
Moderately Helpful	22.8%	25.3%	24.7%	43.4%	14.3%	24.8%
Slightly Helpful	4.8%	8.0%	6.2%	9.4%	8.6%	6.9%
Not Helpful	4.1%	3.4%	3.7%	5.7%	4.3%	4.1%
Number Responding	145	87	81	53	70	436
C. Understanding People with Different Backgrounds, Habits, Values, Appearances and Abilities						
Extremely Helpful	33.1%	17.2%	29.6%	15.1%	32.9%	27.1%
Very Helpful	37.9%	39.1%	37.0%	30.2%	40.0%	37.4%
Moderately Helpful	20.0%	33.3%	27.2%	30.2%	17.1%	24.8%
Slightly Helpful	6.9%	5.7%	4.9%	15.1%	8.6%	7.6%
Not Helpful	2.1%	4.6%	1.2%	9.4%	1.4%	3.2%
Number Responding	145	87	81	53	70	436
D. Becoming a More Active Citizen						
Extremely Helpful	14.6%	4.6%	18.5%	3.8%	17.1%	12.4%
Very Helpful	29.9%	28.7%	29.6%	21.2%	30.0%	28.6%
Moderately Helpful	29.2%	42.5%	37.0%	36.5%	30.0%	34.3%
Slightly Helpful	19.4%	17.2%	12.3%	21.2%	12.9%	16.8%
Not Helpful	6.9%	6.9%	2.5%	17.3%	10.0%	7.8%
Number Responding	144	87	81	52	70	434
E. Improving Quality of Life (aside from financial benefits)						
Extremely Helpful	15.9%	16.1%	16.0%	13.2%	23.2%	16.8%
Very Helpful	33.1%	31.0%	39.5%	32.1%	33.3%	33.8%
Moderately Helpful	33.1%	37.9%	30.9%	35.8%	23.2%	32.4%
Slightly Helpful	12.4%	9.2%	12.3%	15.1%	14.5%	12.4%
Not Helpful	5.5%	5.7%	1.2%	3.8%	5.8%	4.6%
Number Responding	145	87	81	53	69	435
F. Developing Reasoning Skills						
Extremely Helpful	24.8%	19.5%	22.2%	28.3%	25.7%	23.9%
Very Helpful	46.2%	48.3%	49.4%	43.4%	44.3%	46.6%
Moderately Helpful	26.2%	20.7%	23.5%	20.8%	22.9%	23.4%
Slightly Helpful	2.1%	6.9%	3.7%	7.5%	5.7%	4.6%
Not Helpful	0.7%	4.6%	1.2%	0.0%	1.4%	1.6%
Number Responding	145	87	81	53	70	436

Southern Illinois University Edwardsville
Survey of 2014 Baccalaureate Graduates -- One Year Out
Survey Responses -- Part VI
Educational Effectiveness Questions

School Detail, cont.	CAS	BUS	EDU	ENG	NUR	Total
G. Viewing Problems from Different Perspectives						
Extremely Helpful	34.5%	29.9%	30.0%	32.1%	30.4%	31.8%
Very Helpful	44.1%	37.9%	46.3%	37.7%	42.0%	42.2%
Moderately Helpful	15.2%	21.8%	17.5%	22.6%	21.7%	18.9%
Slightly Helpful	5.5%	6.9%	6.3%	7.5%	2.9%	5.8%
Not Helpful	0.7%	3.4%	0.0%	0.0%	2.9%	1.4%
Number Responding	145	87	80	53	69	434
H. Developing Ability to Solve Problems						
Extremely Helpful	26.9%	19.5%	25.9%	43.4%	28.6%	27.5%
Very Helpful	49.7%	54.0%	45.7%	39.6%	42.9%	47.5%
Moderately Helpful	17.2%	18.4%	22.2%	13.2%	21.4%	18.6%
Slightly Helpful	4.8%	4.6%	4.9%	3.8%	5.7%	4.8%
Not Helpful	1.4%	3.4%	1.2%	0.0%	1.4%	1.6%
Number Responding	145	87	81	53	70	436
I. Making Informed Decisions as a Citizen						
Extremely Helpful	22.8%	23.0%	22.2%	13.2%	21.4%	21.3%
Very Helpful	36.6%	37.9%	34.6%	22.6%	30.0%	33.7%
Moderately Helpful	29.7%	26.4%	34.6%	34.0%	31.4%	30.7%
Slightly Helpful	8.3%	8.0%	7.4%	20.8%	10.0%	9.9%
Not Helpful	2.8%	4.6%	1.2%	9.4%	7.1%	4.4%
Number Responding	145	87	81	53	70	436
J. Developing Writing Skills						
Extremely Helpful	35.9%	25.3%	35.8%	3.8%	17.1%	26.8%
Very Helpful	35.2%	28.7%	27.2%	28.3%	44.3%	33.0%
Moderately Helpful	19.3%	31.0%	25.9%	39.6%	21.4%	25.7%
Slightly Helpful	7.6%	10.3%	6.2%	18.9%	11.4%	9.9%
Not Helpful	2.1%	4.6%	4.9%	9.4%	5.7%	4.6%
Number Responding	145	87	81	53	70	436
K. Developing Oral Communication Skills						
Extremely Helpful	38.9%	29.9%	39.5%	9.4%	21.7%	30.9%
Very Helpful	32.6%	33.3%	30.9%	41.5%	42.0%	35.0%
Moderately Helpful	21.5%	28.7%	24.7%	32.1%	20.3%	24.7%
Slightly Helpful	5.6%	5.7%	3.7%	11.3%	8.7%	6.5%
Not Helpful	1.4%	2.3%	1.2%	5.7%	7.2%	3.0%
Number Responding	144	87	81	53	69	434
L. Developing Knowledge of Scientific and Technological Developments						
Extremely Helpful	25.2%	14.9%	29.6%	32.1%	28.6%	25.3%
Very Helpful	32.2%	37.9%	28.4%	45.3%	41.4%	35.7%
Moderately Helpful	26.6%	32.2%	25.9%	20.8%	24.3%	26.5%
Slightly Helpful	9.1%	10.3%	13.6%	1.9%	5.7%	8.8%
Not Helpful	7.0%	4.6%	2.5%	0.0%	0.0%	3.7%
Number Responding	143	87	81	53	70	434

Southern Illinois University Edwardsville
Survey of 2014 Baccalaureate Graduates -- One Year Out
Survey Responses -- Part VI
Educational Effectiveness Questions

School Detail, cont.	CAS	BUS	EDU	ENG	NUR	Total
27. Undergraduate Education Broadened Interest Beyond Subjects in Major						
Strongly Agree	26.9%	19.5%	28.4%	21.2%	18.6%	23.7%
Agree	53.8%	50.6%	53.1%	28.8%	42.9%	48.3%
Neutral	13.8%	19.5%	12.3%	34.6%	22.9%	18.6%
Disagree	4.8%	8.0%	4.9%	15.4%	11.4%	7.8%
Strongly Disagree	0.7%	2.3%	1.2%	0.0%	4.3%	1.6%
Number Responding	145	87	81	52	70	435
28. Importance of College Education to:						
A. Personal Life						
Very Important	81.3%	70.1%	83.8%	63.3%	75.7%	76.5%
Moderately Important	14.6%	20.7%	15.0%	28.6%	20.0%	18.4%
Slightly Important	2.8%	6.9%	0.0%	8.2%	1.4%	3.5%
Not Important	1.4%	2.3%	1.3%	0.0%	2.9%	1.6%
Number Responding	144	87	80	49	70	430
B. Community Life						
Very Important	38.2%	26.4%	46.3%	16.3%	52.9%	37.2%
Moderately Important	35.4%	37.9%	43.8%	32.7%	32.9%	36.7%
Slightly Important	17.4%	27.6%	7.5%	40.8%	11.4%	19.3%
Not Important	9.0%	8.0%	2.5%	10.2%	2.9%	6.7%
Number Responding	144	87	80	49	70	430
C. Professional Life						
Very Important	65.3%	65.5%	72.5%	76.0%	81.4%	70.5%
Moderately Important	20.8%	24.1%	17.5%	20.0%	11.4%	19.3%
Slightly Important	5.6%	5.7%	7.5%	4.0%	5.7%	5.8%
Not Important	8.3%	4.6%	2.5%	0.0%	1.4%	4.4%
Number Responding	144	87	80	50	70	431
29. Quality of SIUE Education Relative to That of Friends at Other Schools						
Among the Best	21.5%	25.3%	25.9%	13.2%	35.7%	24.4%
Above Average	34.0%	47.1%	39.5%	49.1%	37.1%	40.0%
Average	38.2%	25.3%	28.4%	30.2%	18.6%	29.7%
Below Average	4.9%	2.3%	2.5%	7.5%	7.1%	4.6%
Among the Worst	1.4%	0.0%	3.7%	0.0%	1.4%	1.4%
Number Responding	144	87	81	53	70	435
30. Involvement Since Bachelor's Degree with:						
A. Organized, Formal, Career Related Learning (non-degree)						
Currently Involved	27.3%	28.6%	30.0%	32.7%	40.6%	30.8%
Have Been Involved	32.2%	40.5%	38.8%	38.5%	44.9%	37.9%
Never Involved	40.6%	31.0%	31.3%	28.8%	14.5%	31.3%
Number Responding	143	84	80	52	69	428
B. Personal Enrichment Studies						
Currently Involved	18.3%	13.1%	23.8%	15.7%	20.3%	18.3%
Have Been Involved	37.3%	35.7%	40.0%	27.5%	40.6%	36.9%
Never Involved	44.4%	51.2%	36.3%	56.9%	39.1%	44.8%
Number Responding	142	84	80	51	69	426

Southern Illinois University Edwardsville
Survey of 2014 Baccalaureate Graduates -- One Year Out
Survey Responses -- Part VI
Educational Effectiveness Questions

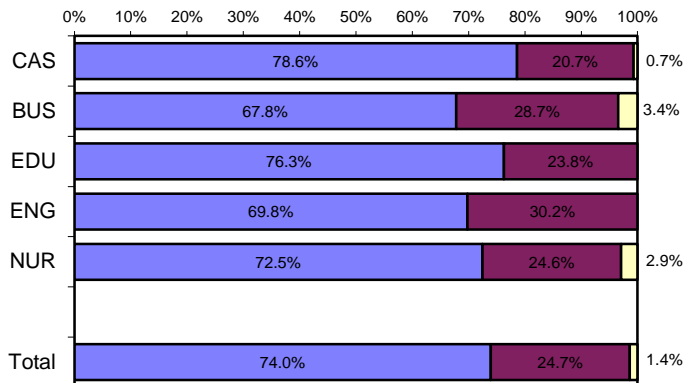
School Detail, cont.	CAS	BUS	EDU	ENG	NUR	Total
C. Professional Activities or Organizations						
Currently Involved	34.5%	38.8%	44.4%	34.6%	43.5%	38.7%
Have Been Involved	33.8%	36.5%	24.7%	32.7%	44.9%	34.3%
Never Involved	31.7%	24.7%	30.9%	32.7%	11.6%	27.1%
Number Responding	145	85	81	52	69	432
D. Volunteer Work / Community Svc Activities or Organizations						
Currently Involved	28.5%	36.5%	33.8%	11.5%	20.3%	27.7%
Have Been Involved	45.1%	34.1%	35.0%	23.1%	50.7%	39.3%
Never Involved	26.4%	29.4%	31.3%	65.4%	29.0%	33.0%
Number Responding	144	85	80	52	69	430
E. Social / Recreational Activities or Organizations						
Currently Involved	38.6%	46.4%	32.5%	28.8%	36.8%	37.5%
Have Been Involved	41.4%	38.1%	45.0%	38.5%	39.7%	40.8%
Never Involved	20.0%	15.5%	22.5%	32.7%	23.5%	21.7%
Number Responding	145	84	80	52	68	429
F. Political Activities or Organizations						
Currently Involved	9.0%	4.8%	8.6%	0.0%	5.8%	6.5%
Have Been Involved	23.6%	15.5%	8.6%	13.5%	13.0%	16.3%
Never Involved	67.4%	79.8%	82.7%	86.5%	81.2%	77.2%
Number Responding	144	84	81	52	69	430
G. Religious / Ethical Activities or Organizations						
Currently Involved	27.1%	23.8%	24.7%	15.4%	20.3%	23.5%
Have Been Involved	20.8%	28.6%	23.5%	11.5%	39.1%	24.7%
Never Involved	52.1%	47.6%	51.9%	73.1%	40.6%	51.9%
Number Responding	144	84	81	52	69	430
H. Support or Participation in the Arts (music, drama, dance, art)						
Currently Involved	24.5%	17.9%	16.0%	9.6%	8.7%	17.2%
Have Been Involved	27.3%	28.6%	25.9%	21.2%	31.9%	27.3%
Never Involved	48.3%	53.6%	58.0%	69.2%	59.4%	55.5%
Number Responding	143	84	81	52	69	429
I. Reading books not directly related to your job						
Currently Involved	58.0%	42.4%	56.8%	36.5%	62.3%	52.8%
Have Been Involved	30.1%	32.9%	27.2%	28.8%	24.6%	29.1%
Never Involved	11.9%	24.7%	16.0%	34.6%	13.0%	18.1%
Number Responding	143	85	81	52	69	430

6/9/2016

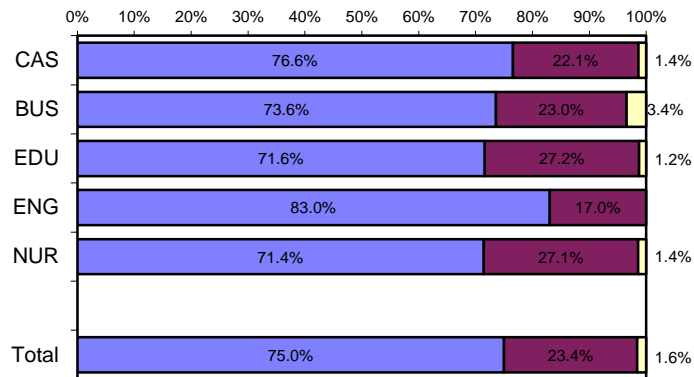
Helpfulness of University Experiences in:

■ Very to Extremely Helpful
 ■ Slightly to Moderately Helpful
 ■ Not Helpful

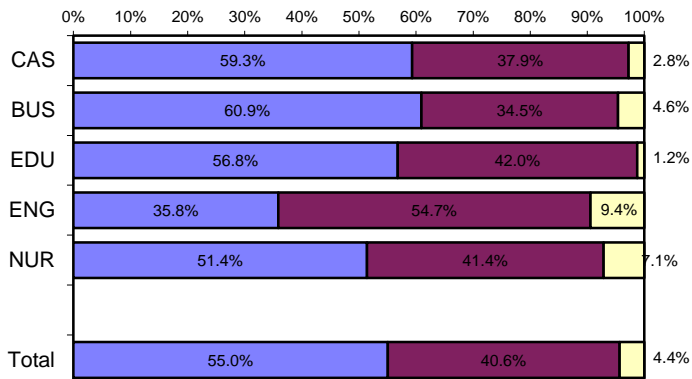
Viewing Problems from Different Perspectives



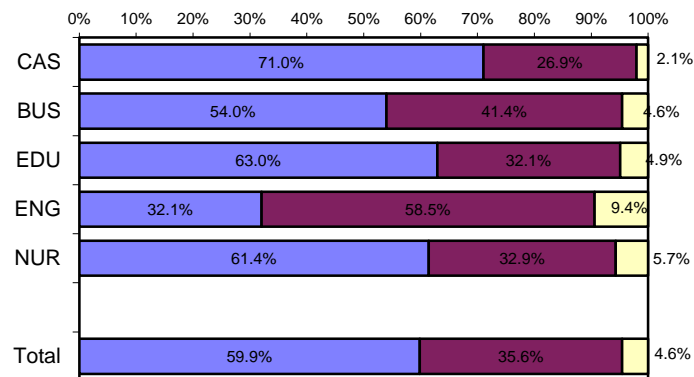
Developing Ability to Solve Problems



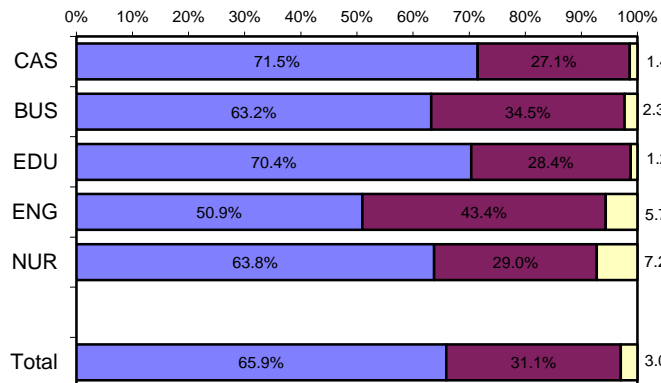
Making Informed Decisions as a Citizen



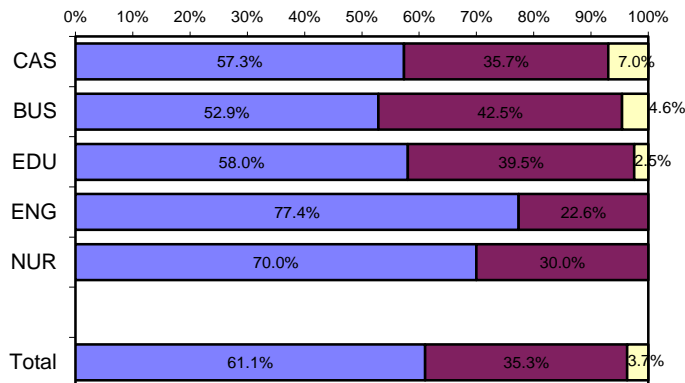
Developing Writing Skills



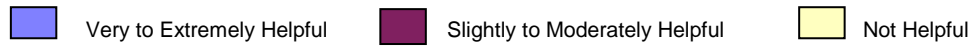
Developing Oral Communication Skills



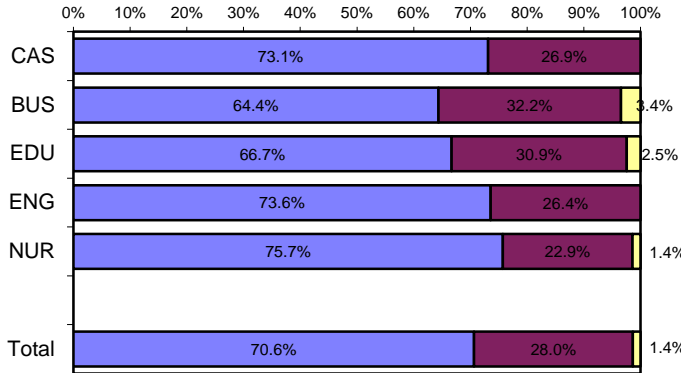
Developing Knowledge of Scientific and Technological Developments



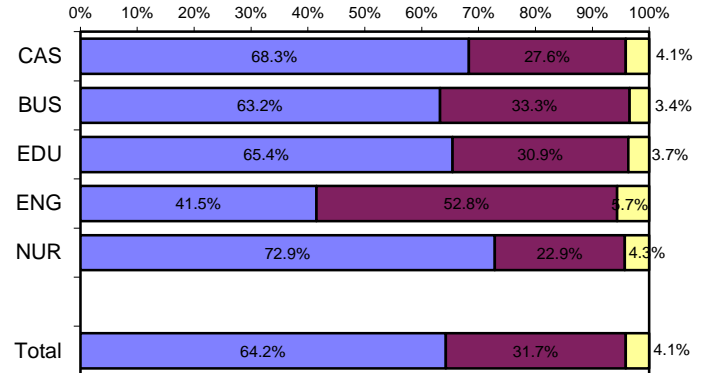
Helpfulness of University Experiences in:



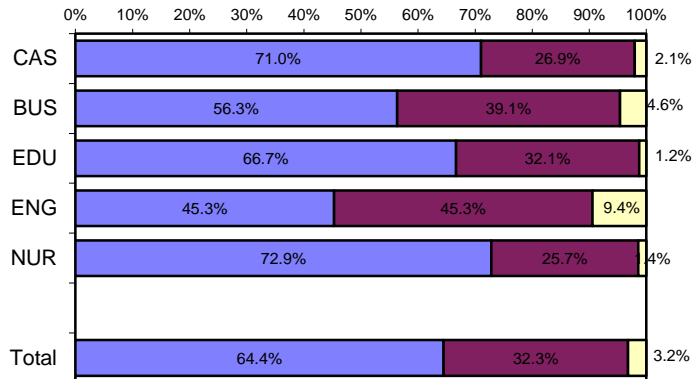
Developing Critical Thinking Ability



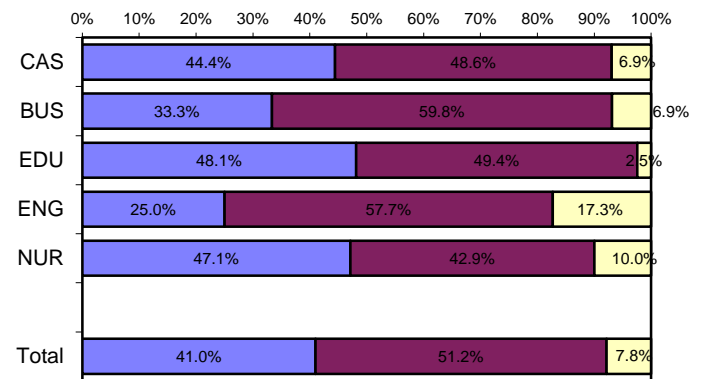
Developing Sense of Ethics



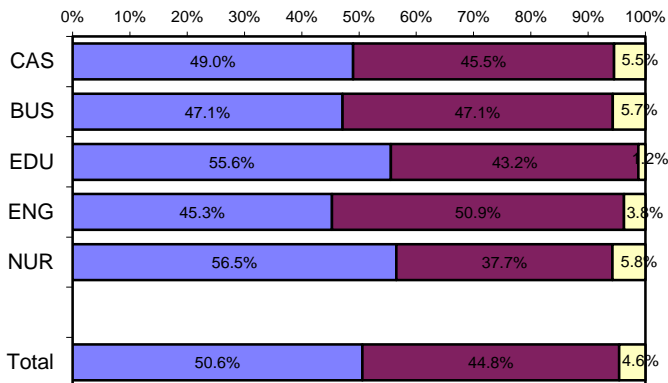
Understanding People with Different Backgrounds



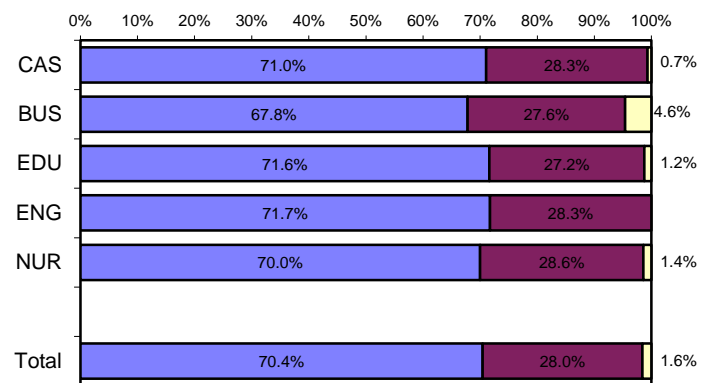
Becoming a More Active Citizen



Improving Quality of Life (aside from financial benefits)



Developing Reasoning Skills



Appendix A

Sample Questionnaire

SOUTHERN ILLINOIS UNIVERSITY EDWARDSVILLE

SURVEY OF 2014 BACCALAUREATE GRADUATES ONE YEAR AFTER GRADUATION

Most of the questions in this survey can be answered simply by circling the appropriate number. We hope you will give us your help and valuable input so that we can design programs that better serve the needs of SIUE students. PLEASE ANSWER THESE QUESTIONS ONLY IN REGARD TO THE SIUE UNDERGRADUATE DEGREE YOU RECEIVED LAST YEAR. Your individual responses to this questionnaire will be kept completely confidential. Thank you for your cooperation. Please return this survey in the envelope provided.

I. Employment

1. Are you currently employed (including self-employed)?

- | | |
|------------------|--|
| 1 Yes, full-time | 3 No, but <u>am</u> seeking employment |
| 2 Yes, part-time | 4 No, and <u>am not</u> seeking employment |

If you are NOT employed (responses 3 and 4), skip to *Section II*.

2. What is the Zip Code of your place of employment (e.g., your actual workplace, not corporate headquarters)? _____

3. How would you classify your primary employer?

- | | |
|--|--|
| 1 Self-employed or private practice | 6 Health agency (e.g., hospital, clinic) |
| 2 Business (industrial, commercial or service) | 7 Federal, state, or local government |
| 3 Professional firm (e.g., engineering, law) | 8 Armed services |
| 4 College or university | 9 Non-profit (non-government) |
| 5 Elementary/secondary school (including cooperatives) | 10 Other (please specify) _____ |

4. How satisfied are you with your current job?

- 1 Very Satisfied 2 Satisfied 3 Somewhat Satisfied 4 Somewhat Dissatisfied 5 Dissatisfied 6 Very Dissatisfied

5. How closely related is your current job to your bachelor's degree major?

- 1 Closely Related 2 Related 3 Unrelated

If you marked "3" (unrelated), is this by choice?

- 1 Yes 2 No

6. When did you secure your first job following receipt of your bachelor's degree?

- 1 Held the same job while enrolled
2 Secured job by time of graduation
3 Secured job after graduation

If you marked "3," how many months after graduation did you secure employment?

- | | | |
|--------------------------|--------------------------|----------------------|
| 1 Less than 1 month | 3 Between 3 and 6 months | 5 More than 9 months |
| 2 Between 1 and 3 months | 4 Between 6 and 9 months | |

7. What is your annual earned income before taxes in your current job? _____

8. In general, how well did your bachelor's degree prepare you for your present job?

- 1 Very Well 2 Well 3 Adequately 4 Inadequately 5 Poorly 6 Very poorly

9. Please circle on the lists below both your primary **occupation**¹ (what you do) and the **industry** in which you are employed (where you do it). Although some occupations typically work within one industry, they may be employed in other industries also. An example would be a school nurse — Health: Registered Nurses (11) in Educational Services (15). Examples of the types of occupations contained in each category are provided in italics.

Please write in your actual job title _____ (optional)

Circle One

Occupational Categories

- | | |
|---|---|
| <p>01. Management (<i>such as top executives; marketing, P.R., finance, human resources, administrative services, purchasing, & sales managers; educational administrators; health administrators</i>)</p> <p>02. Business Operations (<i>such as buyers & purchasing agents; insurance claims adjusters/examiners; human resources, training, & labor relations specialists; management analysts</i>)</p> <p>03. Financial Specialists (<i>such as accountants, assessors, appraisers, financial & credit analysts/advisors, loan counselors/officers</i>)</p> <p>04. Computer Specialists (<i>such as computer & information scientists, programmers, software specialists, database & network administrators and analysts</i>)</p> <p>05. Mathematical Scientists and Technicians (<i>such as mathematicians, statisticians, actuaries & mathematical technicians</i>)</p> <p>06. Architects, Surveyors, and Cartographers</p> <p>07. Engineers and Related Technicians (<i>such as agricultural, civil, computer hardware, electrical, industrial, mechanical, materials & construction engineers & technicians</i>)</p> <p>08. Life and Physical Scientists and Technicians (<i>such as agricultural & food scientists, biologists, medical scientists, chemists, physicists, atmospheric & environmental scientists, and related technicians</i>)</p> <p>09. Social Scientists (<i>such as economists, psychologists, market & survey researchers, geographers, historians, sociologists, anthropologists, political scientists & urban planners</i>)</p> <p>10. Health: Doctors (<i>such as physicians & surgeons, dentists, veterinarians, optometrists, podiatrists, and chiropractors</i>)</p> <p>11. Health: Registered Nurses</p> <p>12. Health: Therapists (<i>such as occupational, physical, recreational, and speech therapists</i>)</p> <p>13. Health: Other Health Practitioners, Professionals, and Support Workers (<i>such as pharmacists, dieticians, physician assistants, and all other technicians/assistants/aides</i>)</p> <p>14. Community and Social Service (<i>such as counselors, social workers, community & religious workers, probation officers</i>)</p> <p>15. Legal: Attorneys/Judges</p> <p>16. Legal: Legal Support Workers</p> <p>17. Education : Early Childhood Teachers (<i>such as day care, pre-school, and kindergarten teachers</i>)</p> <p>18. Education: Elementary School Teachers</p> <p>19. Education: Middle School Teachers</p> | <p>20. Education: Secondary School Teachers</p> <p>21. Education: Special Education Teachers</p> <p>22. Education: Other, <u>except</u> Administrators (see 01) (<i>such as postsecondary teachers; vocational teachers; teaching & research assistants; other teachers, trainers, & assistants</i>)</p> <p>23. Library Occupations (<i>such as librarians, archivists, curators, and library technicians</i>)</p> <p>24. Arts and Design Workers (<i>such as designers and fine & craft artists</i>)</p> <p>25. Entertainers, Performers, Sports and Related Workers (<i>such as musicians, singers, dancers, actors, producers, directors, composers, athletes, coaches and referees</i>)</p> <p>26. Media and Communication Workers (<i>such as writers & editors, announcers, news analysts & reporters, public relations specialists, and media & communications equipment workers</i>)</p> <p>27. Sales (<i>such as real estate, retail, insurance & securities sales agents, wholesale & manufacturing sales representatives, telemarketers</i>)</p> <p>28. Office and Administration (<i>such as clerical & support personnel, clerks, tellers, distribution workers</i>)</p> <p>29. Protective Services (<i>such as firefighters, correctional officers, police, life guards, security guards, investigators</i>)</p> <p>30. Food Preparation and Serving (<i>such as cooks, bartenders, food service workers & servers</i>)</p> <p>31. Building and Grounds Cleaning and Maintenance (<i>such as janitors, cleaners, landscaping & grounds keeping laborers</i>)</p> <p>32. Personal Care and Services (<i>such as flight attendants, child care workers, hairstylists & personal care workers, recreation workers, hotel & travel industry workers</i>)</p> <p>33. Farming, Fishing, and Forestry (<i>such as farmworkers, animal care workers, foresters, loggers</i>)</p> <p>34. Construction and Extractive (<i>such as carpenters; electricians; painters, construction, oil & mining workers; plumbers</i>)</p> <p>35. Installation, Maintenance, and Repair (<i>such as telecommunications workers; auto repairers; heating, air conditioning, and refrigeration mechanics and installers</i>)</p> <p>36. Production (<i>such as electrical & electronic equipment assemblers; food, metal, plastic, printing, & photography industry technicians & workers</i>)</p> <p>37. Transportation and Material Moving (<i>such as pilots, drivers, air traffic controllers</i>)</p> <p>38. Military (<i>such as officers & enlisted personnel</i>)</p> |
|---|---|

Circle One

Industrial Categories

- | | | |
|---|---|--|
| <p>01 Agriculture, Forestry, and Fishing</p> <p>02 Mining</p> <p>03 Utilities</p> <p>04 Construction</p> <p>05 Manufacturing</p> <p>06 Wholesale Trade</p> <p>07 Retail Trade</p> <p>08 Transportation</p> <p>09 Information</p> | <p>10 Finance and Insurance</p> <p>11 Real Estate and Rental and Leasing</p> <p>12 Professional, Scientific and Technical Services</p> <p>13 Management of Companies and Enterprises</p> <p>14 Administrative and Support, Waste Management & Remediation Services</p> <p>15 Educational Services</p> | <p>16 Health Care and Social Assistance</p> <p>17 Arts, Entertainment and Recreation</p> <p>18 Accommodations and Food Services</p> <p>19 Other Services (except Public Administration)</p> <p>20 Public Administration</p> |
|---|---|--|

¹For some occupations, such as doctors, the occupation is not appropriate for students one year after earning a baccalaureate degree. This complete listing is also used for surveys of alumni five-years and nine-years after graduation.

II. Education

10. Have you enrolled in a college or university since earning your bachelor's degree?

- 1 Yes, full-time 2 Yes, part-time 3 No

If you have NOT enrolled in a college or university (response "3"), skip to *Section III*.

11. Are you pursuing (or have you completed) an additional degree since earning your bachelor's?

- 1 Yes 2 No (If your answer is "no," skip to *Section III*.)

If you are pursuing (or have completed) another degree, please indicate which degree below:

- | | |
|--|--|
| 1 Associate's | 6 Health Professional (dentistry, pharmacy, podiatry, optometry, etc.) |
| 2 Second Bachelor's | 7 Theology/Divinity |
| 3 Academic Master's (MA, MS, MEd, etc.) | 8 Law (LLB, JD) |
| 4 Professional Master's (MBA, MSW, MFA, MPA, etc.) or Education Specialist | 9 Doctorate (PhD, EdD, DA, DBA, etc.) |
| 5 Medicine (MD, DO) | 10 Other, please specify: _____ |

12. In general, how well did your bachelor's degree prepare you for your additional degree program?

- 1 Very well 2 Well 3 Adequately 4 Inadequately 5 Poorly 6 Very poorly

III. Satisfaction

13. What is your present attitude towards the University?

- 1 Strongly Positive 2 Positive 3 Somewhat Positive 4 Somewhat Negative 5 Negative 6 Strongly Negative

14. What is your present attitude towards your bachelor's degree major?

- 1 Strongly Positive 2 Positive 3 Somewhat Positive 4 Somewhat Negative 5 Negative 6 Strongly Negative

IV. Educational Practices: *The questions below will provide feedback to help the University improve undergraduate education. Please respond to each question by evaluating your program as a whole.*

In my major degree program, --	Very Often	Often	Sometimes	Infrequently	Never
15. professors were accessible outside of class.	1	2	3	4	5
16. I was expected or required to work cooperatively with other students on projects, homework, and assignments.	1	2	3	4	5
17. professors encouraged me to challenge my own ideas, the ideas of other students, and those presented in readings and other course materials.	1	2	3	4	5
18. professors used appropriate teaching activities to help me learn.	1	2	3	4	5
19. professors' expectations for the quality of student work was high.	1	2	3	4	5
20. professors provided me with timely feedback on my performance.	1	2	3	4	5
21. professors encouraged students' questions and discussion in class.	1	2	3	4	5
22. I spent the necessary time and energy to come to class prepared.	1	2	3	4	5

V. Program Quality

23. How would you rate the quality of your major degree program concerning the:

	Excellent	Good	Fair	Poor
A. Number of courses offered in your major for you to complete your program in a reasonable amount of time.	1	2	3	4
B. Classes being offered at convenient times.	1	2	3	4
C. Classes being offered in a logical sequence.	1	2	3	4

24. How would you rate the quality of the faculty in your major degree program: 1 2 3 4

25. Were the academic standards in grading students by faculty in your degree program:

- 1 Too High 2 About Right 3 Too Low

VI. Educational Effectiveness

26. Listed below are some abilities often mentioned as important for personal and professional success in the 21st century. In your view, how effective were your University experiences in —

	Extremely Helpful	Very Helpful	Moderately Helpful	Slightly Helpful	Not Helpful
A. helping you to better develop your critical thinking ability?	1	2	3	4	5
B. helping you to better develop your sense of ethics?	1	2	3	4	5
C. contributing to a greater understanding of people with different backgrounds, habits, values, appearances, and abilities?	1	2	3	4	5
D. helping you to become a more active citizen?	1	2	3	4	5
E. improving the quality of your life aside from financial benefits?	1	2	3	4	5
F. helping you to better develop your reasoning skills?	1	2	3	4	5
G. helping you to better develop your capacity to view problems from different perspectives?	1	2	3	4	5
H. helping you to better develop your ability to solve problems?	1	2	3	4	5
I. helping you to better develop your ability to make informed decisions as a citizen?	1	2	3	4	5
J. helping you to better develop your writing skills?	1	2	3	4	5
K. helping you to better develop your oral communication skills?	1	2	3	4	5
L. helping you to better develop your knowledge of scientific and technological developments?	1	2	3	4	5

27. My SIUE undergraduate education broadened my interest in issues beyond the subjects in my major.

1 Strongly Agree 2 Agree 3 Neutral 4 Disagree 5 Strongly Disagree

28. How important has your college education been to your —

	Very Important	Moderately Important	Slightly Important	Not Important
A. Personal Life	1	2	3	4
B. Community Life	1	2	3	4
C. Professional Life	1	2	3	4

29. How would you rate the quality of education that you received from SIUE relative to the education that your friends and colleagues have received from other colleges or universities?

1 Among the Best 2 Above Average 3 Average 4 Below Average 5 Among the worst

30. Please indicate your involvement with each of the following since completing your bachelor's degree:

	Currently Involved	Have Been Involved	Never Involved
A. Organized, formal learning that is career-related (non-degree)	1	2	3
B. Personal enrichment studies	1	2	3
C. Professional activities or organizations	1	2	3
D. Volunteer work / community service activities or organizations	1	2	3
E. Social/recreational activities or organizations	1	2	3
F. Political activities or organizations	1	2	3
G. Religious/ethical activities or organizations	1	2	3
H. Support or participation in the Arts (<i>music, drama, dance, art</i>)	1	2	3
I. Reading books not directly related to your job	1	2	3

VII. Comments