

Southern Illinois University at Edwardsville

Survey of 1994 Baccalaureate Graduates -- One Year Out

Comparison of All Graduates to Survey Respondents

School Detail	All Graduates									
	Bus	Educ	Engr	Fine Arts	Hum	Nursing	Sci	Soc Sci	Other	Total
Total	282	291	131	163	35	119	112	143	13	1289
Female	51.8%	80.4%	18.3%	62.0%	68.6%	87.4%	45.5%	51.7%	61.5%	59.4%
Male	48.2%	19.6%	81.7%	38.0%	31.4%	12.6%	54.5%	48.3%	38.5%	40.6%
Missing Data	0.0%	0.0%	0.0%	0.0%	0.0%	0.0%	0.0%	0.0%	0.0%	0.0%
White, Non-Hispanic	83.7%	90.0%	83.2%	84.0%	88.6%	89.1%	92.0%	83.9%	76.9%	86.4%
Black, Non-Hispanic	13.1%	8.6%	9.9%	11.7%	8.6%	8.4%	3.6%	14.0%	23.1%	10.4%
Asian/Pacific Islander	0.7%	0.3%	0.8%	0.6%	0.0%	0.0%	2.7%	0.7%	0.0%	0.7%
American Indian/Alaskan Native	0.7%	0.0%	0.0%	0.6%	2.9%	0.8%	0.0%	0.0%	0.0%	0.4%
Hispanic	0.7%	1.0%	1.5%	0.6%	0.0%	0.8%	0.9%	0.7%	0.0%	0.9%
Non-Resident Alien	1.1%	0.0%	4.6%	2.5%	0.0%	0.8%	0.9%	0.7%	0.0%	1.2%
Missing Data	0.0%	0.0%	0.0%	0.0%	0.0%	0.0%	0.0%	0.0%	0.0%	0.0%
Age at Graduation	range	range	range	range	range	range	range	range	range	range
	20 to 55	21 to 52	21 to 53	21 to 57	21 to 53	21 to 59	21 to 48	22 to 59	23 to 64	20 to 64
	25	24	25	24	26	25	24	24	33	25
Bachelor of Science	87.9%	94.8%	100.0%	60.7%	2.9%	100.0%	88.4%	72.0%	15.4%	83.6%
Bachelor of Music	0.0%	0.0%	0.0%	12.3%	0.0%	0.0%	0.0%	0.0%	0.0%	1.6%
Bachelor of Arts	0.0%	5.2%	0.0%	22.7%	97.1%	0.0%	11.6%	28.0%	0.0%	10.8%
Bachelor of Fine Arts	0.0%	0.0%	0.0%	4.3%	0.0%	0.0%	0.0%	0.0%	0.0%	0.5%
Bachelor of Sci in Accountancy	12.1%	0.0%	0.0%	0.0%	0.0%	0.0%	0.0%	0.0%	0.0%	2.6%
Bachelor of Liberal Studies	0.0%	0.0%	0.0%	0.0%	0.0%	0.0%	0.0%	0.0%	84.6%	0.9%
Missing Data	0.0%	0.0%	0.0%	0.0%	0.0%	0.0%	0.0%	0.0%	0.0%	0.0%
Graduated Spring 1994	41.1%	50.2%	45.8%	46.0%	51.4%	35.3%	58.0%	41.3%	38.5%	45.5%
Graduated Summer 1994	27.3%	17.5%	18.3%	31.3%	25.7%	2.5%	18.8%	34.3%	30.8%	22.4%
Graduated Fall 1994	31.6%	32.3%	35.9%	22.7%	22.9%	62.2%	23.2%	24.5%	30.8%	32.1%
Missing Data	0.0%	0.0%	0.0%	0.0%	0.0%	0.0%	0.0%	0.0%	0.0%	0.0%
Matriculated as a New Freshman	40.4%	36.1%	28.2%	42.9%	57.1%	27.7%	42.0%	37.8%	23.1%	37.5%
Matriculated as a Transfer	58.5%	62.5%	68.7%	54.6%	40.0%	71.4%	55.4%	59.4%	69.2%	60.6%
Matriculated as a Non-Degree Student	1.1%	1.4%	3.1%	2.5%	2.9%	0.8%	2.7%	2.8%	7.7%	1.9%
Missing Data	0.0%	0.0%	0.0%	0.0%	0.0%	0.0%	0.0%	0.0%	0.0%	0.0%
Time to Degree for New Freshmen										
3 Years or Fewer	0.0%	1.9%	0.0%	1.4%	0.0%	0.0%	0.0%	0.0%	0.0%	0.6%
4 Years	15.8%	26.7%	13.5%	12.9%	15.0%	27.3%	25.5%	11.1%	0.0%	18.6%
5 Years	28.1%	29.5%	32.4%	24.3%	20.0%	24.2%	29.8%	29.6%	0.0%	27.7%
6 Years	15.8%	16.2%	29.7%	20.0%	15.0%	21.2%	14.9%	29.6%	33.3%	19.5%
7 Years	7.0%	3.8%	16.2%	10.0%	5.0%	6.1%	12.8%	7.4%	0.0%	7.9%
8 Years	8.8%	1.0%	2.7%	12.9%	10.0%	9.1%	2.1%	3.7%	33.3%	6.2%
9 Years	6.1%	6.7%	2.7%	4.3%	10.0%	0.0%	4.3%	1.9%	0.0%	4.8%
10 Years or More	18.4%	14.3%	2.7%	14.3%	25.0%	12.1%	10.6%	16.7%	33.3%	14.7%
Missing Data	0.0%	0.0%	0.0%	0.0%	0.0%	0.0%	0.0%	0.0%	0.0%	0.0%
Time to Degree for Transfers										
2 or Fewer Years	7.3%	17.0%	15.6%	12.4%	14.3%	5.9%	11.3%	10.6%	11.1%	11.8%
3 Years	25.5%	34.1%	27.8%	29.2%	7.1%	38.8%	27.4%	30.6%	22.2%	30.0%
4 Years	23.0%	23.1%	28.9%	25.8%	28.6%	32.9%	21.0%	23.5%	11.1%	25.0%
5 Years	12.1%	10.4%	13.3%	14.6%	14.3%	5.9%	22.6%	14.1%	0.0%	12.4%
6 Years	12.7%	5.5%	10.0%	4.5%	7.1%	1.2%	3.2%	7.1%	0.0%	6.9%
7 Years	3.6%	3.3%	2.2%	2.2%	7.1%	3.5%	3.2%	2.4%	0.0%	3.1%
8 Years	4.2%	1.1%	0.0%	2.2%	7.1%	1.2%	3.2%	3.5%	11.1%	2.4%
9 Years or More	11.5%	5.5%	2.2%	9.0%	14.3%	10.6%	8.1%	8.2%	44.4%	8.5%
Missing Data	0.0%	0.0%	0.0%	0.0%	0.0%	0.0%	0.0%	0.0%	0.0%	0.0%
Graduating GPA (4 point scale)	Mear	Mear	Mear	Mear	Mear	Mear	Mear	Mear	Mear	Mear
	2.880	3.205	2.900	3.066	3.144	3.061	3.043	3.023	2.817	3.032
	Std Dev	Std Dev	Std Dev	Std Dev	Std Dev	Std Dev	Std Dev	Std Dev	Std Dev	Std Dev
	0.464	0.429	0.463	0.512	0.504	0.405	0.152	0.466	NA	0.473

Note: Other includes Human Services and University College.

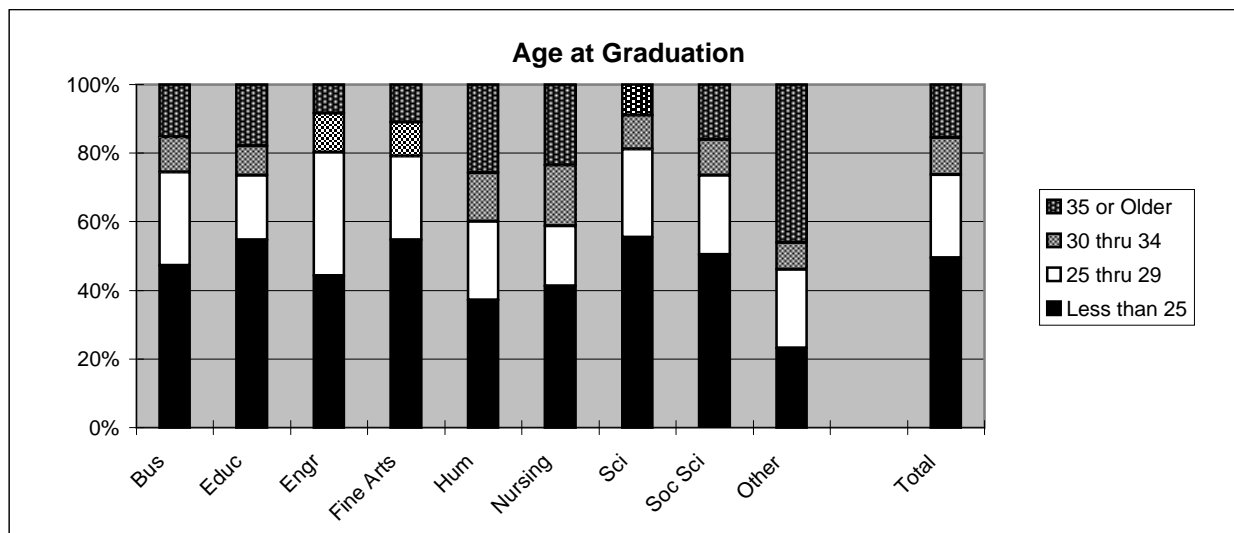
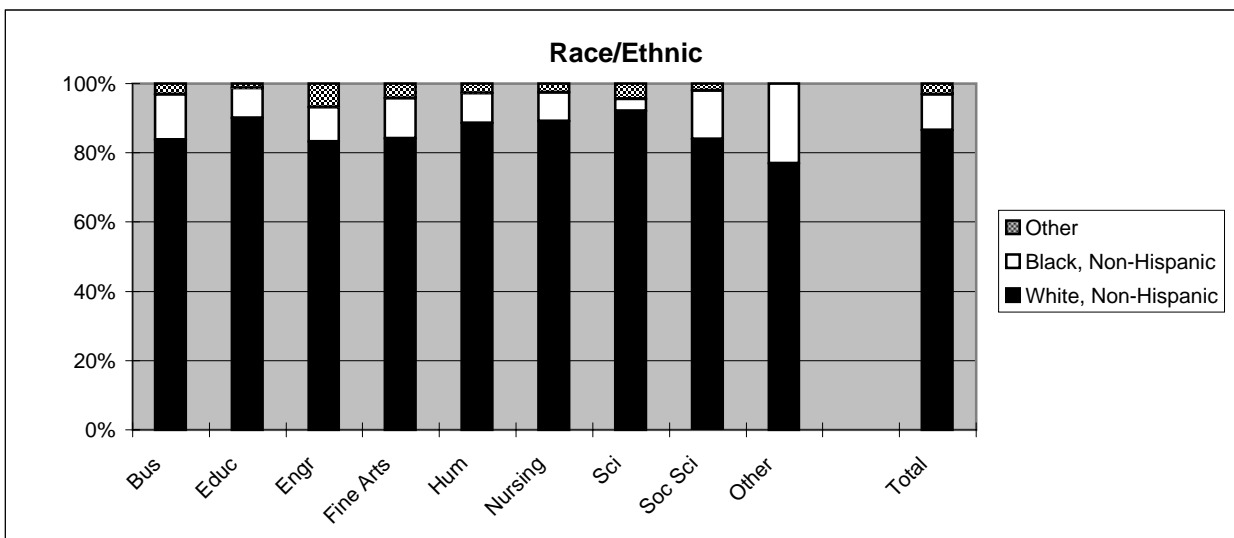
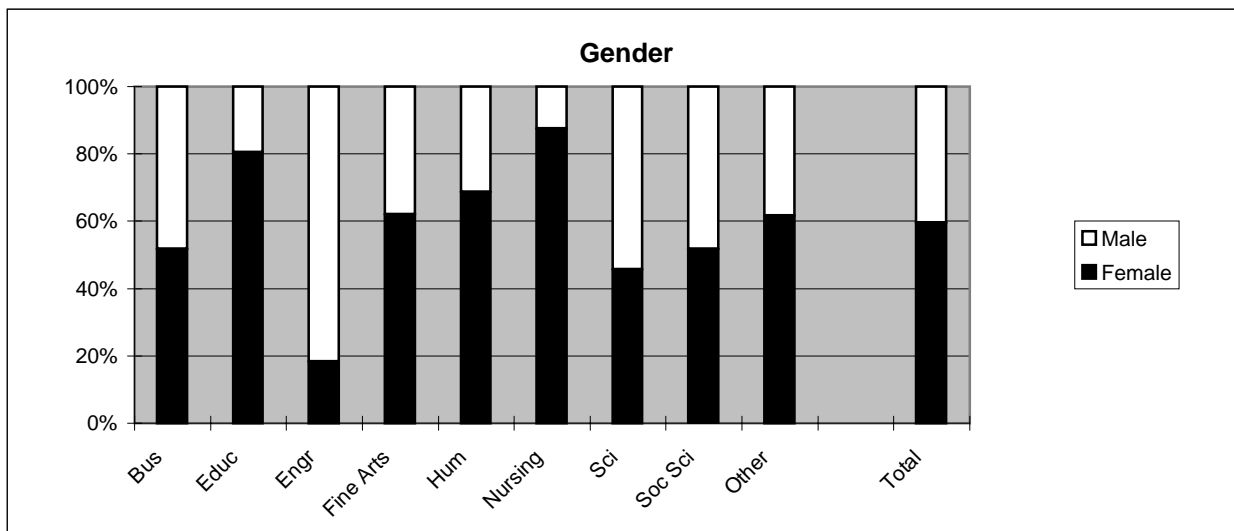
Southern Illinois University at Edwardsville
Survey of 1994 Baccalaureate Graduates -- One Year Out

Comparison of All Graduates to Survey Respondents, con't.

School Detail	All One Year Out Survey Respondents									
	Bus	Educ	Engr	Fine Arts	Hum	Nursing	Sci	Soc Sci	Other	Total
Total	122	148	52	53	15	39	49	70	7	555
Female	60.7%	87.2%	19.2%	73.6%	73.3%	92.3%	59.2%	57.1%	42.9%	66.8%
Male	39.3%	12.8%	80.8%	26.4%	26.7%	7.7%	40.8%	42.9%	57.1%	33.2%
Missing Data	0.0%	0.0%	0.0%	0.0%	0.0%	0.0%	0.0%	0.0%	0.0%	0.0%
White, Non-Hispanic	88.5%	90.5%	96.2%	90.6%	80.0%	94.9%	95.9%	90.0%	71.4%	90.8%
Black, Non-Hispanic	9.8%	8.8%	0.0%	9.4%	20.0%	5.1%	2.0%	8.6%	28.6%	7.9%
Asian/Pacific Islander	0.0%	0.0%	0.0%	0.0%	0.0%	0.0%	2.0%	0.0%	0.0%	0.2%
American Indian/Alaskan Native	0.8%	0.0%	0.0%	0.0%	0.0%	0.0%	0.0%	0.0%	0.0%	0.2%
Hispanic	0.8%	0.7%	1.9%	0.0%	0.0%	0.0%	0.0%	1.4%	0.0%	0.7%
Non-Resident Alien	0.0%	0.0%	1.9%	0.0%	0.0%	0.0%	0.0%	0.0%	0.0%	0.2%
Missing Data	0.0%	0.0%	0.0%	0.0%	0.0%	0.0%	0.0%	0.0%	0.0%	0.0%
Age at Graduation	20 to 55	21 to 52	22 to 53	22 to 57	21 to 53	21 to 59	21 to 48	22 to 59	23 to 64	20 to 64
range										
mediar	25	24	25	24	26	25	24	24	33	25
Bachelor of Science	87.7%	95.3%	100.0%	66.0%	6.7%	100.0%	89.8%	71.4%	28.6%	84.9%
Bachelor of Music	0.0%	0.0%	0.0%	15.1%	0.0%	0.0%	0.0%	0.0%	0.0%	1.4%
Bachelor of Arts	0.0%	4.7%	0.0%	17.0%	93.3%	0.0%	10.2%	28.6%	0.0%	9.9%
Bachelor of Fine Arts	0.0%	0.0%	0.0%	1.9%	0.0%	0.0%	0.0%	0.0%	0.0%	0.2%
Bachelor of Sci in Accountancy	12.3%	0.0%	0.0%	0.0%	0.0%	0.0%	0.0%	0.0%	0.0%	2.7%
Bachelor of Liberal Studies	0.0%	0.0%	0.0%	0.0%	0.0%	0.0%	0.0%	0.0%	71.4%	0.9%
Missing Data	0.0%	0.0%	0.0%	0.0%	0.0%	0.0%	0.0%	0.0%	0.0%	0.0%
Graduated Spring 1994	41.0%	48.6%	51.9%	54.7%	46.7%	38.5%	65.3%	40.0%	42.9%	47.4%
Graduated Summer 1994	27.0%	16.2%	7.7%	18.9%	26.7%	2.6%	16.3%	35.7%	28.6%	20.0%
Graduated Fall 1994	32.0%	35.1%	40.4%	26.4%	26.7%	59.0%	18.4%	24.3%	28.6%	32.6%
Missing Data	0.0%	0.0%	0.0%	0.0%	0.0%	0.0%	0.0%	0.0%	0.0%	0.0%
Matriculated as a New Freshman	45.1%	35.1%	32.7%	45.3%	53.3%	28.2%	46.9%	38.6%	0.0%	39.1%
Matriculated as a Transfer	54.1%	62.8%	65.4%	52.8%	40.0%	71.8%	53.1%	61.4%	85.7%	59.5%
Matriculated as a Non-Degree Student	0.8%	2.0%	1.9%	1.9%	6.7%	0.0%	0.0%	0.0%	14.3%	1.4%
Missing Data	0.0%	0.0%	0.0%	0.0%	0.0%	0.0%	0.0%	0.0%	0.0%	0.0%
Time to Degree for New Freshmer										
3 Years or Fewer	0.0%	3.8%	0.0%	4.2%	0.0%	0.0%	0.0%	0.0%	NA	1.4%
4 Years	18.2%	23.1%	11.8%	29.2%	25.0%	45.5%	34.8%	14.8%	NA	23.0%
5 Years	23.6%	32.7%	35.3%	16.7%	0.0%	9.1%	30.4%	33.3%	NA	26.3%
6 Years	18.2%	15.4%	29.4%	20.8%	25.0%	27.3%	8.7%	29.6%	NA	19.8%
7 Years	3.6%	3.8%	17.6%	8.3%	12.5%	9.1%	8.7%	3.7%	NA	6.5%
8 Years	9.1%	0.0%	0.0%	4.2%	0.0%	0.0%	0.0%	3.7%	NA	3.2%
9 Years	3.6%	3.8%	0.0%	4.2%	0.0%	0.0%	4.3%	0.0%	NA	2.8%
10 Years or More	23.6%	17.3%	5.9%	12.5%	37.5%	9.1%	13.0%	14.8%	NA	17.1%
Missing Data	0.0%	0.0%	0.0%	0.0%	0.0%	0.0%	0.0%	0.0%	NA	0.0%
Time to Degree for Transfers										
2 or Fewer Years	7.6%	18.3%	14.7%	14.3%	16.7%	7.1%	11.5%	14.0%	0.0%	13.0%
3 Years	22.7%	40.9%	38.2%	39.3%	0.0%	25.0%	26.9%	34.9%	33.3%	32.7%
4 Years	21.2%	19.4%	23.5%	25.0%	33.3%	39.3%	19.2%	23.3%	0.0%	22.7%
5 Years	12.1%	9.7%	8.8%	3.6%	0.0%	14.3%	26.9%	11.6%	0.0%	11.2%
6 Years	13.6%	3.2%	8.8%	3.6%	0.0%	3.6%	3.8%	4.7%	0.0%	6.1%
7 Years	4.5%	4.3%	2.9%	3.6%	16.7%	0.0%	3.8%	2.3%	0.0%	3.6%
8 Years	4.5%	1.1%	0.0%	0.0%	16.7%	0.0%	0.0%	0.0%	16.7%	1.8%
9 Years or More	13.6%	3.2%	2.9%	10.7%	16.7%	10.7%	7.7%	9.3%	50.0%	8.8%
Missing Data	0.0%	0.0%	0.0%	0.0%	0.0%	0.0%	0.0%	0.0%	0.0%	0.0%
Graduating GPA (4 point scale)	2.903	3.272	3.040	3.186	3.027	3.142	3.097	3.108	2.685	3.102
Mean										
Std Dev	0.463	0.415	0.485	0.548	0.426	0.450	0.455	0.459	NA	0.479

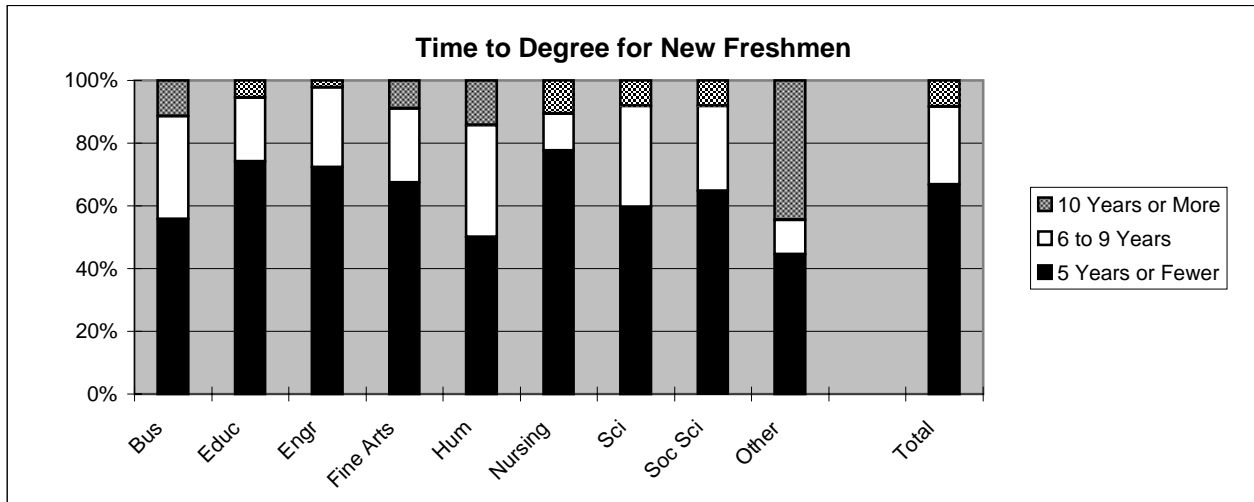
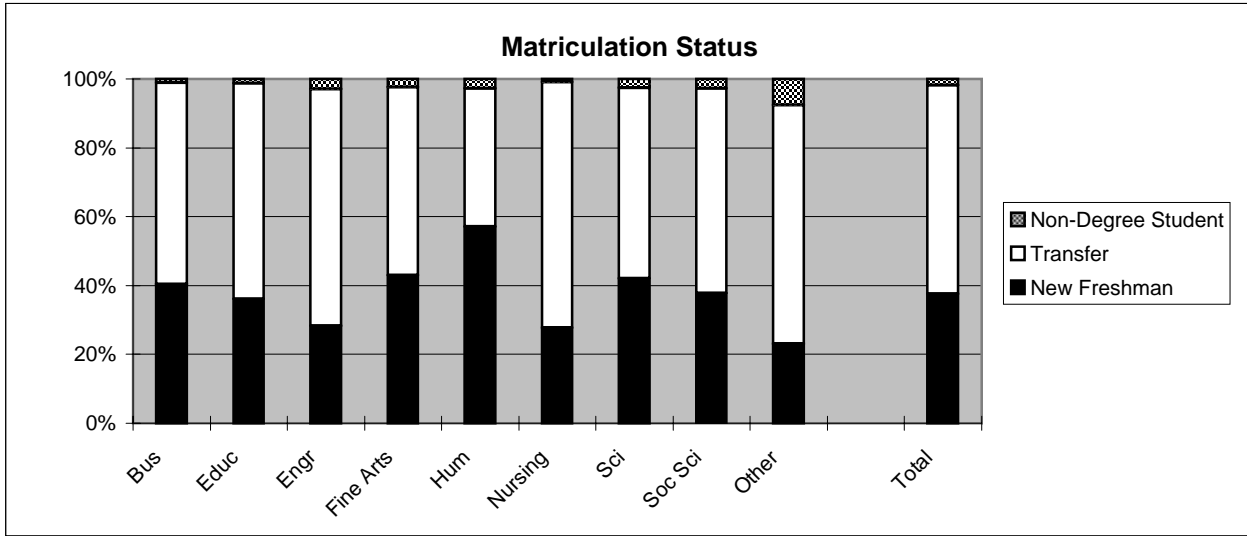
Note: Other includes Human Services and University College.

1994 Baccalaureate Recipients Profile



1994 Baccalaureate Recipients

Profile, con't.



Southern Illinois University at Edwardsville
Survey of 1994 Baccalaureate Graduates -- One Year Out
Survey Responses -- Part I
Employment Questions

School Detail	Bus	Educ	Engr	Fine Arts	Hum	Nursing	Sci	Soc Sci	Other	Total
Number of Survey Respondents	122	148	52	53	15	39	49	70	7	555
1. Number Employed:										
Full-time	92.6%	70.7%	90.4%	62.3%	66.7%	76.9%	71.4%	64.3%	66.7%	76.1%
Part-time	3.3%	15.0%	1.9%	11.3%	26.7%	23.1%	16.3%	21.4%	16.7%	12.7%
Not, but Seeking	3.3%	10.2%	7.7%	7.5%	0.0%	0.0%	2.0%	5.7%	0.0%	5.8%
Not, not Seeking	0.8%	4.1%	0.0%	18.9%	6.7%	0.0%	10.2%	8.6%	16.7%	5.4%
Number Responding	122	147	52	53	15	39	49	70	6	553
The remaining questions in Part I were to be answered only by respondents who were employed full-time or part-time.										
	117	126	48	39	14	39	43	60	5	491
2. Place of Employment										
Illinois	30.2%	85.7%	41.7%	50.0%	61.5%	74.4%	60.0%	62.1%	50.0%	58.5%
Missouri	60.4%	10.9%	43.8%	42.1%	15.4%	15.4%	27.5%	29.3%	50.0%	32.7%
Other	9.4%	3.4%	14.6%	7.9%	23.1%	10.3%	12.5%	8.6%	0.0%	8.8%
Number Responding	106	119	48	38	13	39	40	58	4	465
3. Classification of Primary Employer										
Self-Employed or Private Practice	4.3%	4.0%	0.0%	17.9%	0.0%	0.0%	0.0%	8.3%	0.0%	4.5%
Business (Industrial, Commercial or Service)	74.4%	12.7%	31.3%	43.6%	50.0%	0.0%	32.6%	28.3%	25.0%	35.5%
Professional Firm (e.g., Engineering, Law)	8.5%	0.8%	58.3%	5.1%	0.0%	0.0%	4.7%	1.7%	25.0%	9.2%
College or University	2.6%	5.6%	2.1%	2.6%	0.0%	0.0%	14.0%	6.7%	0.0%	4.5%
Elementary/Secondary School	1.7%	57.1%	0.0%	15.4%	7.1%	0.0%	25.6%	11.7%	0.0%	20.2%
Health Agency (e.g. Hospital, Clinic)	3.4%	8.7%	0.0%	0.0%	7.1%	92.3%	16.3%	11.7%	25.0%	13.7%
Federal, State, or Local Government	2.6%	3.2%	8.3%	7.7%	7.1%	2.6%	4.7%	11.7%	0.0%	5.1%
Armed Services	0.0%	0.0%	0.0%	2.6%	0.0%	5.1%	2.3%	1.7%	0.0%	1.0%
Other	2.6%	7.9%	0.0%	5.1%	28.6%	0.0%	0.0%	18.3%	25.0%	6.3%
Number Responding	117	126	48	39	14	39	43	60	4	490
4. Job Satisfaction										
Very Satisfied	29.9%	40.8%	50.0%	43.2%	42.9%	38.5%	39.5%	31.7%	20.0%	37.7%
Satisfied	55.6%	45.6%	45.8%	35.1%	50.0%	59.0%	58.1%	51.7%	80.0%	50.6%
Dissatisfied	11.1%	11.2%	4.2%	10.8%	7.1%	0.0%	2.3%	10.0%	0.0%	8.4%
Very Dissatisfied	3.4%	2.4%	0.0%	10.8%	0.0%	2.6%	0.0%	6.7%	0.0%	3.3%
Number Responding	117	125	48	37	14	39	43	60	5	488

Southern Illinois University at Edwardsville
Survey of 1994 Baccalaureate Graduates -- One Year Out
Survey Responses -- Part I
Employment Questions

School Detail, con't.	Bus	Educ	Engr	Fine Arts	Hum	Nursing	Sci	Soc Sci	Other	Total
5. Job in Field?										
Closely Related	44.0%	69.0%	68.8%	55.3%	21.4%	84.6%	60.5%	38.3%	0.0%	56.6%
Related	38.8%	18.3%	27.1%	18.4%	14.3%	15.4%	25.6%	10.0%	40.0%	23.5%
Unrelated *	17.2%	12.7%	4.2%	26.3%	64.3%	0.0%	14.0%	51.7%	60.0%	19.8%
Number Responding	116	126	48	38	14	39	43	60	5	489
If Unrelated Field, Is This By Choice?										
Yes	33.3%	33.3%	50.0%	30.0%	66.7%	NA	66.7%	37.9%	66.7%	41.3%
No	66.7%	66.7%	50.0%	70.0%	33.3%	NA	33.3%	62.1%	33.3%	58.7%
Number Responding	18	15	2	10	9	0	6	29	3	92
6. Timing of Securing First Job After Degree										
Held the Same Job While Enrolled	27.4%	4.8%	18.8%	18.4%	30.8%	25.6%	18.6%	25.0%	40.0%	19.0%
Secured Job by Graduation	22.2%	16.7%	25.0%	23.7%	15.4%	25.6%	23.3%	13.3%	20.0%	20.2%
Secured Job After Graduation *	50.4%	78.6%	56.3%	57.9%	53.8%	48.7%	58.1%	61.7%	40.0%	60.7%
Number Responding	117	126	48	38	13	39	43	60	5	489
If After Graduation, How Many Months After?										
Less than 1 Month	15.3%	11.1%	11.1%	18.2%	0.0%	26.3%	16.0%	27.0%	50.0%	15.8%
Between 1 and 3 Months	23.7%	35.4%	44.4%	27.3%	14.3%	42.1%	40.0%	21.6%	0.0%	31.6%
Between 3 and 6 Months	33.9%	25.3%	22.2%	31.8%	42.9%	15.8%	16.0%	18.9%	0.0%	25.3%
Between 6 and 9 Months	20.3%	20.2%	7.4%	13.6%	28.6%	15.8%	16.0%	24.3%	0.0%	18.5%
More Than 9 Months	6.8%	8.1%	14.8%	9.1%	14.3%	0.0%	12.0%	8.1%	50.0%	8.8%
Number Responding	59	99	27	22	7	19	25	37	2	297
7. Annual Earned Income in Current Job Before Taxes										
Employed Full-Time										
Less Than \$15,000	6.5%	12.2%	0.0%	13.8%	0.0%	0.0%	3.0%	9.5%	33.3%	7.4%
\$15,000 to 19,999	21.3%	25.5%	0.0%	34.5%	50.0%	0.0%	9.1%	38.1%	66.7%	21.2%
\$20,000 to \$24,999	19.4%	51.0%	7.1%	31.0%	12.5%	10.7%	39.4%	23.8%	0.0%	28.1%
\$25,000 to \$29,999	21.3%	9.2%	19.0%	10.3%	12.5%	35.7%	24.2%	19.0%	0.0%	17.9%
\$30,000 to \$34,999	18.5%	1.0%	47.6%	10.3%	0.0%	28.6%	21.2%	4.8%	0.0%	15.6%
\$35,000 to \$39,999	5.6%	0.0%	14.3%	0.0%	0.0%	14.3%	3.0%	2.4%	0.0%	4.6%
\$40,000 or More	7.4%	1.0%	11.9%	0.0%	25.0%	10.7%	0.0%	2.4%	0.0%	5.1%
Number Responding	108	98	42	29	8	28	33	42	3	391
Mean Salary	\$25,968	\$20,441	\$32,653	\$19,931	\$28,285	\$30,610	\$24,776	\$21,485	\$16,268	\$24,576
continued for Employed Part-Time on next page										

* The response marked with an asterisk leads to a related question which was to be answered only by those who selected the "asterisked" response.

Southern Illinois University at Edwardsville
Survey of 1994 Baccalaureate Graduates -- One Year Out
Survey Responses -- Part I
Employment Questions

School Detail, con't.	Bus	Educ	Engr	Fine Arts	Hum	Nursing	Sci	Soc Sci	Other	Total
7. Annual Earned Income in Current Job Before Taxes, con't.										
Employed Part-Time										
Less Than \$5,000	0.0%	6.7%	100.0%	0.0%	0.0%	0.0%	20.0%	27.3%	0.0%	11.1%
5,000 to \$9,999	25.0%	33.3%	0.0%	20.0%	33.3%	0.0%	60.0%	36.4%	100.0%	29.6%
\$10,000 to \$14,999	0.0%	40.0%	0.0%	20.0%	0.0%	22.2%	0.0%	18.2%	0.0%	20.4%
\$15,000 to \$19,999	50.0%	13.3%	0.0%	40.0%	33.3%	11.1%	20.0%	9.1%	0.0%	18.5%
\$20,000 or More	25.0%	6.7%	0.0%	20.0%	33.3%	66.7%	0.0%	9.1%	0.0%	20.4%
Number Responding	4	15	1	5	3	9	5	11	1	54
Mean Salary	\$15,938	\$12,676	\$1,200	\$15,584	\$17,117	\$20,858	\$8,970	\$8,434	\$7,500	\$13,282
8. Primary Occupation										
Arts, Communication, and Entertainment	0.9%	2.4%	0.0%	36.8%	21.4%	0.0%	0.0%	6.7%	20.0%	5.3%
Business, Management, and Finance	65.5%	4.8%	2.1%	21.1%	21.4%	0.0%	9.3%	18.3%	20.0%	22.5%
Education	1.7%	72.2%	0.0%	15.8%	14.3%	0.0%	30.2%	16.7%	20.0%	25.6%
Engineering and Computer Science	15.5%	0.0%	95.8%	2.6%	0.0%	0.0%	9.3%	3.3%	0.0%	14.5%
Health	0.0%	5.6%	0.0%	0.0%	7.1%	100.0%	16.3%	8.3%	20.0%	12.3%
Office Support	5.2%	1.6%	0.0%	7.9%	7.1%	0.0%	0.0%	3.3%	20.0%	3.1%
Professional Specialties	0.0%	0.0%	0.0%	0.0%	7.1%	0.0%	0.0%	0.0%	0.0%	0.2%
Public and Social Services	0.9%	10.3%	0.0%	2.6%	7.1%	0.0%	2.3%	26.7%	0.0%	6.7%
Sales	9.5%	0.8%	2.1%	7.9%	7.1%	0.0%	0.0%	6.7%	0.0%	4.3%
Science, Mathematics and Agriculture	0.0%	0.8%	0.0%	2.6%	0.0%	0.0%	30.2%	5.0%	0.0%	3.7%
Transportation and Industry	0.9%	1.6%	0.0%	2.6%	7.1%	0.0%	2.3%	5.0%	0.0%	1.8%
Number Responding	116	126	48	38	14	39	43	60	5	489
9. Bachelor's Degree Preparation for Job										
Very Well	19.1%	39.2%	27.1%	27.8%	16.7%	30.8%	40.5%	25.0%	0.0%	29.1%
Adequately	68.7%	50.4%	70.8%	55.6%	66.7%	61.5%	47.6%	51.8%	100.0%	58.9%
Inadequately	12.2%	10.4%	2.1%	16.7%	16.7%	7.7%	11.9%	23.2%	0.0%	11.9%
Number Responding	115	125	48	36	12	39	42	56	4	477
4/16/96										

Southern Illinois University at Edwardsville
Survey of 1994 Baccalaureate Graduates -- One Year Out
Survey Responses -- Part V
Advisement Questions

School Detail	Bus	Educ	Engr	Fine Arts	Hum	Nursing	Sci	Soc Sci	Other	Total
Number of Survey Respondents	122	148	52	53	15	39	49	70	7	555
19. Advisors in Major Effective on Future Course Offerings										
Strongly Agree	21.3%	14.2%	23.1%	19.2%	20.0%	30.8%	22.4%	47.1%	28.6%	23.5%
Agree	39.3%	37.8%	48.1%	30.8%	20.0%	46.2%	38.8%	37.1%	14.3%	38.3%
Neutral	16.4%	20.9%	15.4%	19.2%	26.7%	7.7%	10.2%	5.7%	42.9%	15.9%
Disagree	14.8%	22.3%	7.7%	11.5%	33.3%	10.3%	20.4%	5.7%	0.0%	15.2%
Strongly Disagree	4.1%	4.1%	3.8%	15.4%	0.0%	2.6%	8.2%	2.9%	0.0%	5.1%
Did Not Discuss	4.1%	0.7%	1.9%	3.8%	0.0%	2.6%	0.0%	1.4%	14.3%	2.2%
Number Responding	122	148	52	52	15	39	49	70	7	554
20. Advisors in Major Effective on Career Planning										
Strongly Agree	12.3%	7.5%	17.3%	7.5%	0.0%	20.5%	12.2%	17.1%	14.3%	11.9%
Agree	23.0%	26.5%	26.9%	24.5%	13.3%	30.8%	28.6%	27.1%	14.3%	25.6%
Neutral	25.4%	23.8%	25.0%	28.3%	33.3%	20.5%	20.4%	24.3%	28.6%	24.5%
Disagree	21.3%	25.9%	19.2%	18.9%	40.0%	15.4%	18.4%	17.1%	14.3%	21.3%
Strongly Disagree	7.4%	10.9%	5.8%	11.3%	13.3%	2.6%	14.3%	7.1%	14.3%	9.0%
Did Not Discuss	10.7%	5.4%	5.8%	9.4%	0.0%	10.3%	6.1%	7.1%	14.3%	7.6%
Number Responding	122	147	52	53	15	39	49	70	7	554
21. Advisors in Major Effective on Degree Requirements										
Strongly Agree	32.0%	19.6%	40.4%	34.0%	13.3%	41.0%	27.1%	52.9%	28.6%	31.9%
Agree	43.4%	40.5%	42.3%	26.4%	26.7%	35.9%	35.4%	35.7%	42.9%	38.3%
Neutral	13.9%	14.9%	9.6%	18.9%	33.3%	12.8%	18.8%	7.1%	14.3%	14.3%
Disagree	6.6%	19.6%	5.8%	5.7%	26.7%	7.7%	10.4%	1.4%	0.0%	10.1%
Strongly Disagree	4.1%	5.4%	0.0%	15.1%	0.0%	2.6%	8.3%	2.9%	0.0%	5.1%
Did Not Discuss	0.0%	0.0%	1.9%	0.0%	0.0%	0.0%	0.0%	0.0%	14.3%	0.4%
Number Responding	122	148	52	53	15	39	48	70	7	554
22. Advisors in Major Effective on Grad/Prof School Entry Requirements										
Strongly Agree	6.7%	4.1%	15.4%	18.9%	0.0%	17.9%	16.3%	17.1%	0.0%	10.7%
Agree	12.5%	14.4%	21.2%	13.2%	20.0%	20.5%	12.2%	30.0%	14.3%	16.9%
Neutral	21.7%	19.2%	11.5%	11.3%	33.3%	10.3%	26.5%	17.1%	71.4%	19.1%
Disagree	17.5%	24.0%	15.4%	18.9%	20.0%	23.1%	14.3%	11.4%	0.0%	18.3%
Strongly Disagree	12.5%	11.0%	5.8%	13.2%	6.7%	7.7%	10.2%	7.1%	0.0%	10.0%
Did Not Discuss	29.2%	27.4%	30.8%	24.5%	20.0%	20.5%	20.4%	17.1%	14.3%	25.0%
Number Responding	120	146	52	53	15	39	49	70	7	551
23. Advisors in Major Usually Available When Needed										
Strongly Agree	9.0%	6.8%	26.9%	32.1%	20.0%	17.9%	18.4%	38.6%	14.3%	17.9%
Agree	45.9%	29.9%	50.0%	30.2%	46.7%	41.0%	30.6%	45.7%	42.9%	38.8%
Neutral	24.6%	31.3%	13.5%	18.9%	20.0%	28.2%	26.5%	14.3%	42.9%	24.0%
Disagree	14.8%	24.5%	9.6%	13.2%	0.0%	10.3%	14.3%	0.0%	0.0%	13.9%
Strongly Disagree	5.7%	7.5%	0.0%	5.7%	13.3%	2.6%	10.2%	1.4%	0.0%	5.4%
Number Responding	122	147	52	53	15	39	49	70	7	554

Southern Illinois University at Edwardsville
Survey of 1994 Baccalaureate Graduates -- One Year Out
Survey Responses -- Part VI
Program Quality Questions

School Detail	Bus	Educ	Engr	Fine Arts	Hum	Nursing	Sci	Soc Sci	Other	Total
Number of Survey Respondents	122	148	52	53	15	39	49	70	7	555
24A. Quality of Major in Offering Sufficient Courses										
Excellent	12.3%	14.9%	9.6%	22.6%	6.7%	10.5%	6.1%	32.9%	0.0%	15.3%
Good	49.2%	47.3%	53.8%	45.3%	53.3%	55.3%	49.0%	42.9%	71.4%	48.7%
Fair	27.9%	29.7%	32.7%	20.8%	13.3%	31.6%	30.6%	22.9%	28.6%	27.6%
Poor	10.7%	8.1%	3.8%	11.3%	26.7%	2.6%	14.3%	1.4%	0.0%	8.3%
Number Responding	122	148	52	53	15	38	49	70	7	554
24B. Quality of Major in Offering Convenient Class Times										
Excellent	10.7%	10.8%	7.7%	17.0%	13.3%	13.2%	12.2%	20.0%	0.0%	12.5%
Good	52.5%	48.0%	40.4%	41.5%	40.0%	42.1%	22.4%	50.0%	42.9%	44.9%
Fair	27.9%	29.7%	38.5%	28.3%	26.7%	31.6%	42.9%	21.4%	42.9%	30.3%
Poor	9.0%	11.5%	13.5%	13.2%	20.0%	13.2%	22.4%	8.6%	14.3%	12.3%
Number Responding	122	148	52	53	15	38	49	70	7	554
24C. Quality of Major in Offering Logical Class Sequences										
Excellent	13.1%	16.9%	17.3%	20.8%	20.0%	18.4%	16.7%	28.6%	0.0%	17.9%
Good	52.5%	52.7%	59.6%	47.2%	40.0%	44.7%	47.9%	47.1%	71.4%	51.0%
Fair	31.1%	26.4%	19.2%	20.8%	26.7%	31.6%	22.9%	21.4%	14.3%	25.5%
Poor	3.3%	4.1%	3.8%	11.3%	13.3%	5.3%	12.5%	2.9%	14.3%	5.6%
Number Responding	122	148	52	53	15	38	48	70	7	553
25. Grading Standards in Major Were:										
Too High	0.8%	0.0%	2.0%	3.9%	0.0%	5.4%	6.1%	2.9%	0.0%	2.0%
About Right	95.0%	93.1%	94.1%	90.2%	80.0%	91.9%	83.7%	92.8%	83.3%	91.9%
Too Low	4.1%	6.9%	3.9%	5.9%	20.0%	2.7%	10.2%	4.3%	16.7%	6.1%
Number Responding	121	145	51	51	15	37	49	69	6	544
4/15/96										

Southern Illinois University at Edwardsville
Survey of 1994 Baccalaureate Graduates--One Year Out
Survey Responses -- Part VII
Undergraduate Experience Questions

School Detail	Bus	Educ	Engr	Fine Arts	Hum	Nursing	Sci	Soc Sci	Other	Total
Number of Survey Respondents	122	148	52	53	15	39	49	70	7	555
26A. Undergrad Education Helped Develop Reading Skills										
Strongly Agree	8.2%	10.2%	5.8%	13.2%	33.3%	7.7%	6.1%	17.4%	14.3%	10.7%
Agree	47.5%	39.5%	36.5%	37.7%	40.0%	41.0%	36.7%	36.2%	42.9%	40.3%
Neutral	36.1%	43.5%	42.3%	28.3%	26.7%	46.2%	32.7%	36.2%	14.3%	37.8%
Disagree	7.4%	5.4%	11.5%	17.0%	0.0%	2.6%	16.3%	7.2%	28.6%	8.7%
Strongly Disagree	0.8%	1.4%	3.8%	3.8%	0.0%	2.6%	8.2%	2.9%	0.0%	2.5%
Number Responding	122	147	52	53	15	39	49	69	7	553
26B. Undergrad Education Helped Develop Reasoning Skills										
Strongly Agree	25.4%	21.2%	21.2%	13.2%	26.7%	25.6%	20.4%	30.0%	28.6%	23.0%
Agree	58.2%	53.4%	61.5%	62.3%	46.7%	69.2%	49.0%	47.1%	57.1%	55.9%
Neutral	14.8%	20.5%	11.5%	18.9%	26.7%	2.6%	24.5%	18.6%	0.0%	17.0%
Disagree	1.6%	3.4%	1.9%	1.9%	0.0%	2.6%	4.1%	4.3%	14.3%	2.9%
Strongly Disagree	0.0%	1.4%	3.8%	3.8%	0.0%	0.0%	2.0%	0.0%	0.0%	1.3%
Number Responding	122	146	52	53	15	39	49	70	7	553
26C. Undergrad Education Helped Develop Broader Perspectives on Problems										
Strongly Agree	30.3%	29.9%	25.0%	26.4%	26.7%	36.8%	22.4%	40.0%	14.3%	30.0%
Agree	59.8%	51.0%	59.6%	39.6%	46.7%	60.5%	44.9%	45.7%	85.7%	52.4%
Neutral	9.8%	15.6%	9.6%	26.4%	26.7%	0.0%	24.5%	12.9%	0.0%	14.3%
Disagree	0.0%	2.0%	5.8%	1.9%	0.0%	2.6%	4.1%	1.4%	0.0%	2.0%
Strongly Disagree	0.0%	1.4%	0.0%	5.7%	0.0%	0.0%	4.1%	0.0%	0.0%	1.3%
Number Responding	122	147	52	53	15	38	49	70	7	553
26D. Undergrad Education Helped Develop Writing Skills										
Strongly Agree	35.2%	26.5%	9.6%	26.4%	46.7%	30.8%	16.3%	32.9%	14.3%	27.4%
Agree	42.6%	44.2%	46.2%	43.4%	53.3%	41.0%	38.8%	32.9%	28.6%	41.9%
Neutral	15.6%	21.8%	25.0%	17.0%	0.0%	20.5%	24.5%	28.6%	42.9%	20.9%
Disagree	5.7%	5.4%	15.4%	9.4%	0.0%	5.1%	12.2%	2.9%	14.3%	7.0%
Strongly Disagree	0.8%	2.0%	3.8%	3.8%	0.0%	2.6%	8.2%	2.9%	0.0%	2.7%
Number Responding	122	147	52	53	15	39	49	70	7	554
26E. Undergrad Education Helped Develop Ability to Make Informed Decisions										
Strongly Agree	15.0%	15.8%	7.7%	17.0%	0.0%	28.2%	8.2%	27.1%	28.6%	16.3%
Agree	60.8%	40.4%	38.5%	47.2%	40.0%	46.2%	34.7%	45.7%	42.9%	45.9%
Neutral	20.0%	34.9%	36.5%	26.4%	60.0%	20.5%	44.9%	21.4%	14.3%	29.6%
Disagree	2.5%	6.2%	11.5%	5.7%	0.0%	2.6%	4.1%	5.7%	14.3%	5.3%
Strongly Disagree	1.7%	2.7%	5.8%	3.8%	0.0%	2.6%	8.2%	0.0%	0.0%	2.9%
Number Responding	120	146	52	53	15	39	49	70	7	551

