

Southern Illinois University at Edwardsville
Survey of 1994 Baccalaureate Graduates -- Five Years Out

Survey Results for Schools

April 2000

Survey Administered By
The Office of Undergraduate Assessment and Program Review

Survey Results Compiled By
The Office of Institutional Research and Studies

Southern Illinois University at Edwardsville
Survey of 1994 Baccalaureate Graduates -- Five Years Out

Contents

Introduction

Methodology

Survey Population and Respondents

Charts: *1994 Baccalaureate Recipients, Profile*

Gender

Race/Ethnic

Age at Graduation

Matriculation Status

Time to Degree for New Freshmen

Time to Degree for New Transfers

Table: *Comparison of All Graduates to Survey Respondents*

Survey Results

Charts: *1994 Baccalaureate Graduates Five Years Out, Satisfaction*
Present Attitude Toward the University
Present Attitude Towards Alumni's Bachelor's Degree Major
Quality of SIUE Education Relative to That of Friends at Other Schools

1994 Baccalaureate Graduates Five Years Out, Additional Education
Additional Postsecondary Degree?
Currently Pursuing a Degree?
How Well Bachelor's Degree Prepared Alumni for Additional Degree

1994 Baccalaureate Graduates Five Years Out, Employment Status
Employment Status
Place of Employment
Job in Field Related to Major?
Job Satisfaction
How Well Bachelor's Degree Prepared Alum for Current Career Path
Mean Salary of Alumni Employed Full Time

Tables:

Part I Employment Questions

Part II Education Questions

Part III Satisfaction Questions

Part IV Educational Effectiveness Questions

**Southern Illinois University Edwardsville
Survey of 1994 Baccalaureate Graduates -- Five Years Out**

Introduction

This five-year out baccalaureate survey was done to provide data for the University's undergraduate program reviews and other planning uses and to participate in the Illinois Board of Higher Education Baccalaureate Graduates' Follow-up System.

IBHE Survey Schedule and Population Definition		
Survey Year	Survey Type	Survey Group
1992	One-Year Out Survey	Class of '91
1993	Five-Year Out Survey	Class of '88
1994	Ten-Year Out Survey	Class of '84
1995	One-Year Out Survey	Class of '94
1996	Five-Year Out Survey	Class of '91
1997	Nine-Year Out Survey	Class of '88
1998	One-Year Out Survey	Class of '97
1999	Five-Year Out Survey	Class of '94
2000	Nine-Year Out Survey	Class of '91
2001	One-Year Out Survey	Class of '00
2002	Five-Year Out Survey	Class of '97
2003	Nine-Year Out Survey	Class of '94

After the first six years, the surveys were reviewed and changed, modifying some questions and value scales, and adding some additional questions. (See Appendix B for more detailed information on the "Public University Baccalaureate Graduates' Follow-Up Surveys.")

The current survey was administered during the spring of 1999 to 1994 baccalaureate graduates of SIUE. The questionnaire includes 15 questions common to all public universities. These are the first 15 questions in the survey, forming Parts I, II, III, and IV (Employment Questions, Education Questions, Satisfaction Questions, and Educational Effectiveness Questions). SIUE added to these one item on industry of employment, seven additional indicators on educational effectiveness, and five additional questions on educational effectiveness. (A questionnaire is included in Appendix A.)

Methodology

The survey questionnaire and a cover letter were adapted from the questionnaire and letter developed for previous surveys. SIUE Alumni Services provided current addresses for calendar year 1994 graduates as determined from institutional records.

On May 11, 1999, approximately two weeks before the surveys were to be mailed, a postcard was sent to the 1,154 1994 baccalaureate graduates for whom addresses were available, notifying the alumni that they would be receiving a questionnaire and encouraging them to complete and return the survey.

Surveys were mailed first class on May 27, 1999. Each envelope included a cover letter, a questionnaire, and a postage-paid, pre-addressed return envelope. Each questionnaire was stamped with a sequential, identifying number which was also stamped on a listing of the graduates (this aided in identifying the surveys when returned). On June 8, approximately two weeks after the survey was mailed and when the rate of survey returns had decreased, a follow-up postcard requesting that the survey be returned was mailed to each student who had not returned his or her survey.

Returned surveys began arriving on June 1st and continued through the summer and fall, with a few arriving as late as November 1999. As the surveys came in, each was matched with the corresponding stamped listing. The students' names were then checked against the alphabetic list of alumni to verify (or, if the alumnus chose not to provide the identification number, to obtain) the student identification number. The student identification number was the key which allowed merging of survey data with administrative records (e.g., biographic, graduation, matriculation, and enrollment information).

Southern Illinois University Edwardsville
Survey of 1994 Baccalaureate Graduates -- Five Years Out

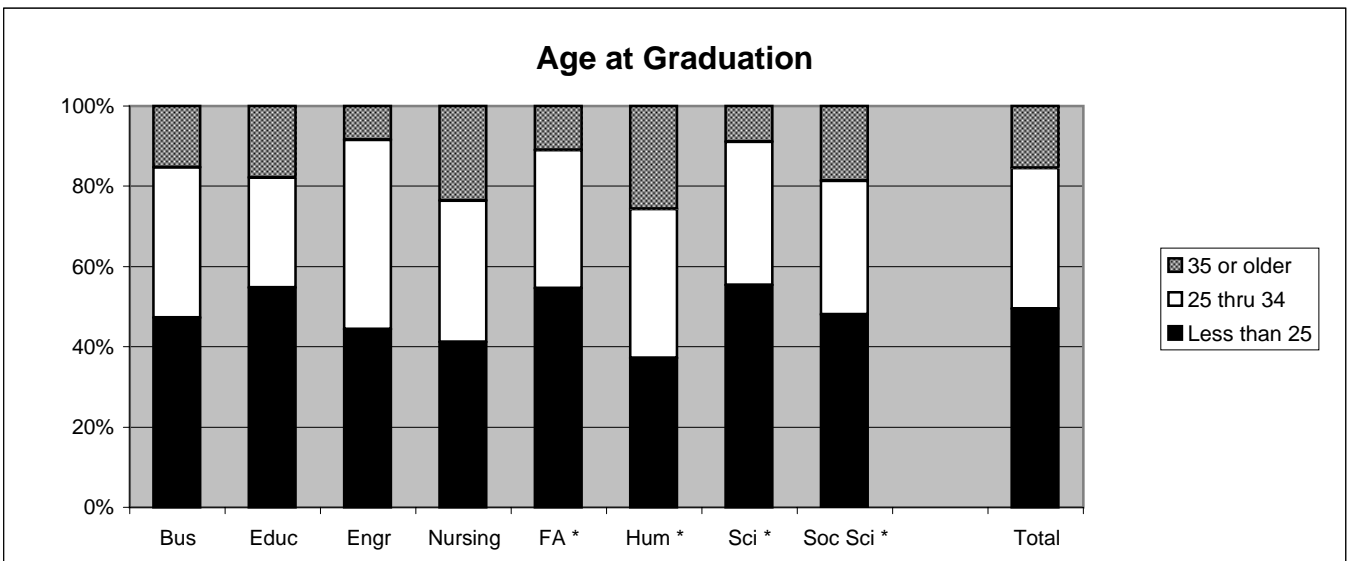
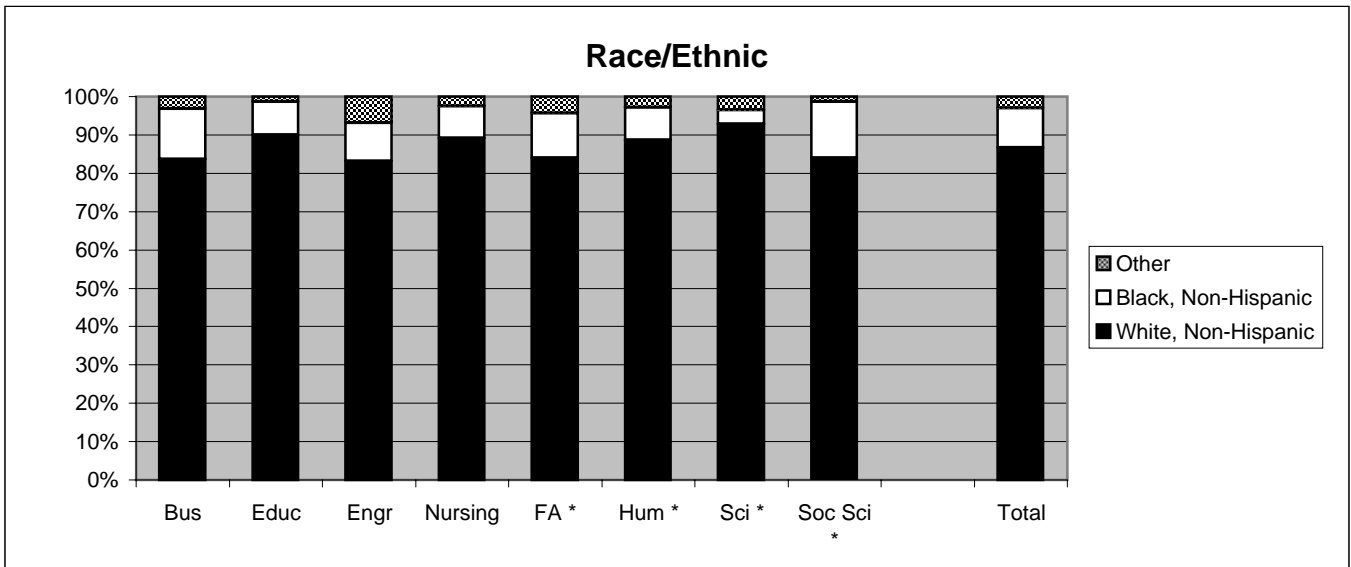
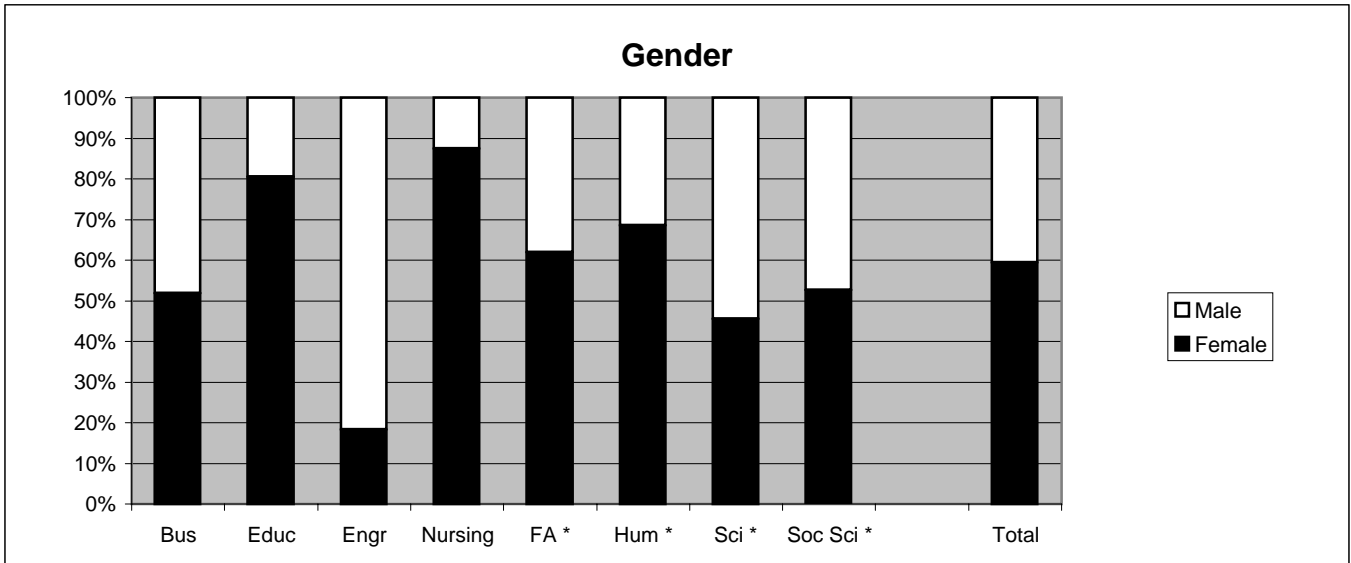
Survey Population and Respondents

	Number of Graduates
1988 Baccalaureate Degrees	1,292
Less persons who received 2 baccalaureate degrees	(3)
1988 Baccalaureate Graduates	1,289
Less Graduates with No Address Available *	(135)
Graduates Surveyed	1,154
Less Non-Deliverable Surveys	44
Less Non-Responding Graduates	751
Survey Respondents	359
Gross Response Rate (Respondents/Total Surveyed)	31.11%
Adjusted Response Rate (Respondents/Delivered Surveys)	32.34%

* Includes deceased alumni, foreign addresses and known bad addresses

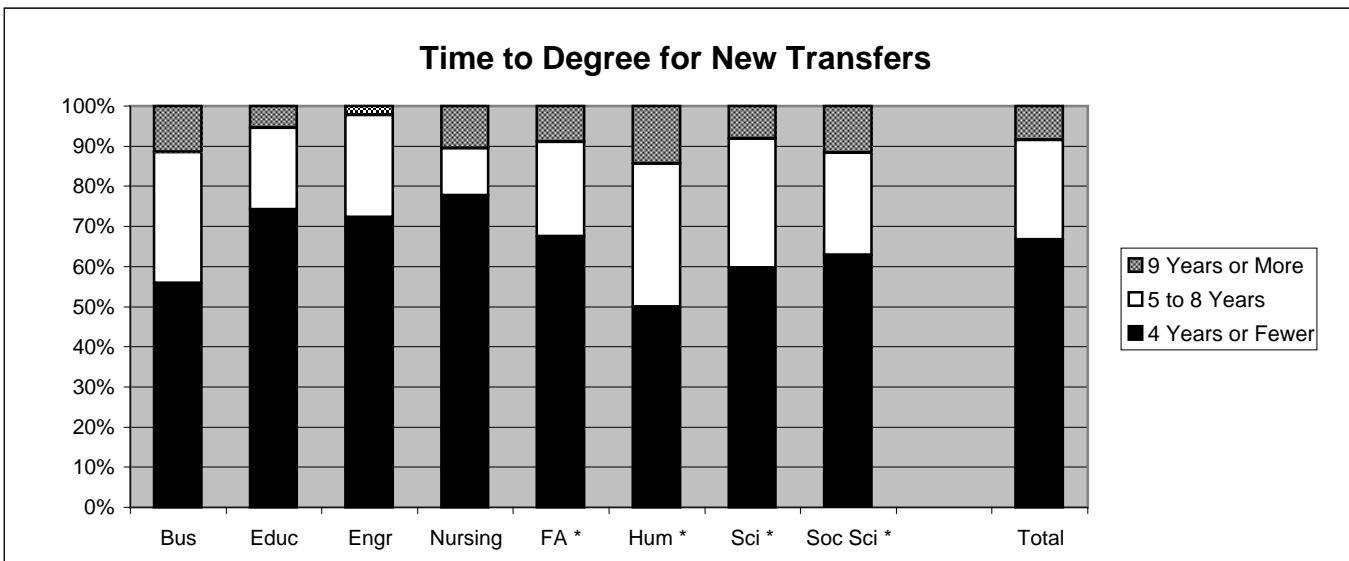
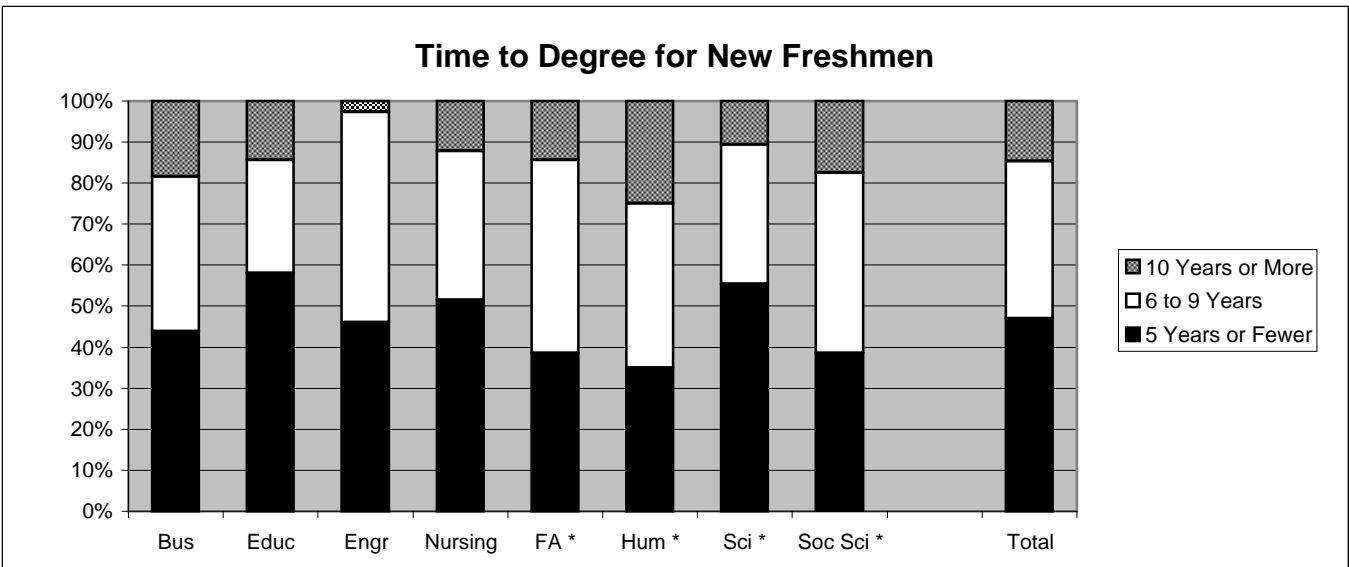
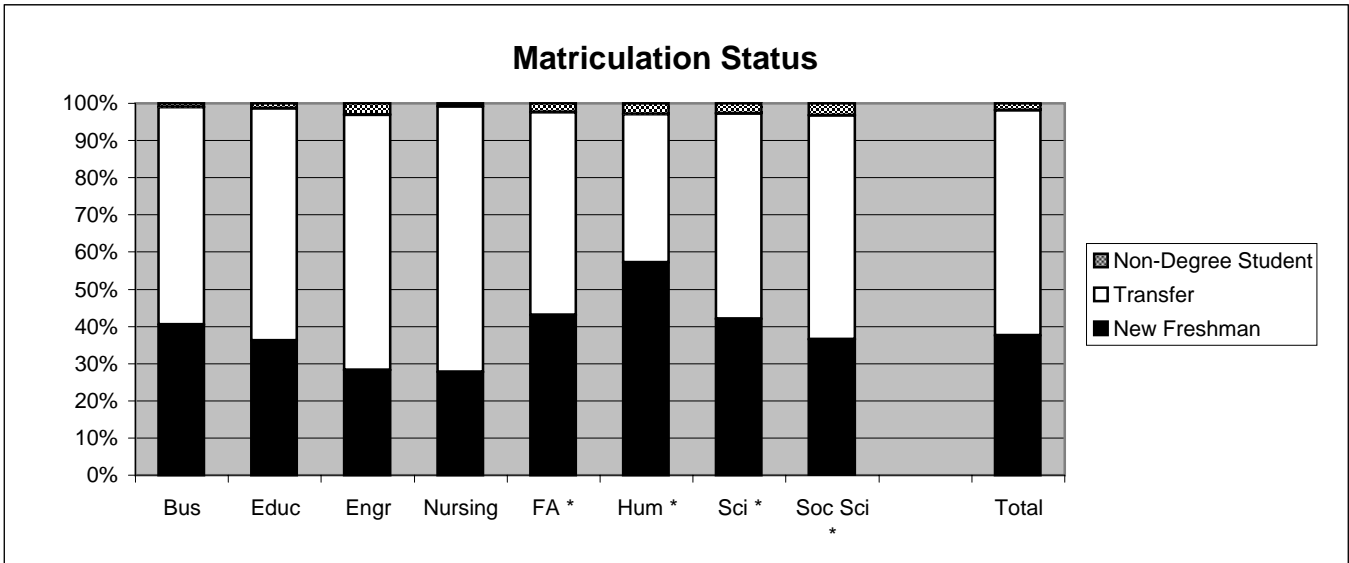
3/20/00

1994 Baccalaureate Recipients Profile



1994 Baccalaureate Recipients

Profile, con't.



Southern Illinois University at Edwardsville
Survey of 1994 Baccalaureate Graduates -- Five Years Out

Comparison of All Graduates to Survey Respondents

		All Graduates								
School Detail		BUS	EDUC	ENGR	NURS	FA *	HUM*	SCI*	SOC S*	Total
Total		282	291	131	119	163	35	112	156	1289
Female		51.8%	80.4%	18.3%	87.4%	62.0%	68.6%	45.5%	52.6%	59.4%
Male		48.2%	19.6%	81.7%	12.6%	38.0%	31.4%	54.5%	47.4%	40.6%
Missing Data		0.0%	0.0%	0.0%	0.0%	0.0%	0.0%	0.0%	0.0%	0.0%
White, Non-Hispanic		83.7%	90.0%	83.2%	89.1%	84.0%	88.6%	92.9%	84.0%	86.6%
Black, Non-Hispanic		13.1%	8.6%	9.9%	8.4%	11.7%	8.6%	3.6%	14.7%	10.4%
Asian/Pacific Islander		0.7%	0.3%	0.8%	0.8%	0.6%	0.0%	2.7%	0.6%	0.8%
American Indian/Alaskan Native		0.7%	0.0%	0.0%	0.8%	0.6%	2.9%	0.0%	0.0%	0.4%
Hispanic		0.7%	1.0%	1.5%	0.8%	0.6%	0.0%	0.9%	0.6%	0.9%
Non-Resident Alien		1.1%	0.0%	4.6%	0.0%	2.5%	0.0%	0.0%	0.0%	1.0%
Missing Data		0.0%	0.0%	0.0%	0.0%	0.0%	0.0%	0.0%	0.0%	0.0%
Age at Graduation	range	20 to 55	21 to 52	1 to 53	21 to 59	21 to 57	21 to 53	21 to 48	22 to 64	20 to 64
	median	24.3	23.5	24.6	24.9	23.7	25.8	23.6	24.4	24.1
Bachelor of Science		87.9%	94.8%	100.0%	100.0%	60.7%	2.9%	88.4%	67.3%	83.6%
Bachelor of Music		0.0%	0.0%	0.0%	0.0%	12.3%	0.0%	0.0%	0.0%	1.6%
Bachelor of Arts		0.0%	5.2%	0.0%	0.0%	22.7%	97.1%	11.6%	25.6%	10.8%
Bachelor of Fine Arts		0.0%	0.0%	0.0%	0.0%	4.3%	0.0%	0.0%	0.0%	0.5%
Bachelor of Sci in Accountancy		12.1%	0.0%	0.0%	0.0%	0.0%	0.0%	0.0%	0.0%	2.6%
Bachelor of Liberal Studies		0.0%	0.0%	0.0%	0.0%	0.0%	0.0%	0.0%	7.1%	0.9%
Missing Data		0.0%	0.0%	0.0%	0.0%	0.0%	0.0%	0.0%	0.0%	0.0%
Graduated Spring 1994		41.1%	50.2%	45.8%	35.3%	46.0%	51.4%	58.0%	41.0%	45.5%
Graduated Summer 1994		27.3%	17.5%	18.3%	2.5%	31.3%	25.7%	18.8%	34.0%	22.4%
Graduated Fall 1994		31.6%	32.3%	35.9%	62.2%	22.7%	22.9%	23.2%	25.0%	32.1%
Missing Data		0.0%	0.0%	0.0%	0.0%	0.0%	0.0%	0.0%	0.0%	0.0%
Matriculated as a New Freshman		40.4%	36.1%	28.2%	27.7%	42.9%	57.1%	42.0%	36.5%	37.5%
Matriculated as a Transfer		58.5%	62.5%	68.7%	71.4%	54.6%	40.0%	55.4%	60.3%	60.6%
Matriculated as a Non-Degree Student		1.1%	1.4%	3.1%	0.8%	2.5%	2.9%	2.7%	3.2%	1.9%
Missing Data		0.0%	0.0%	0.0%	0.0%	0.0%	0.0%	0.0%	0.0%	0.0%
Time to Degree for New Freshmen										
3 Years or Fewer		0.0%	1.9%	0.0%	0.0%	1.4%	0.0%	0.0%	0.0%	0.6%
4 Years		15.8%	26.7%	13.5%	27.3%	12.9%	15.0%	25.5%	10.5%	18.6%
5 Years		28.1%	29.5%	32.4%	24.2%	24.3%	20.0%	29.8%	28.1%	27.7%
6 Years		15.8%	16.2%	29.7%	21.2%	20.0%	15.0%	14.9%	29.8%	19.5%
7 Years		7.0%	3.8%	16.2%	6.1%	10.0%	5.0%	12.8%	7.0%	7.9%
8 Years		8.8%	1.0%	2.7%	9.1%	12.9%	10.0%	2.1%	5.3%	6.2%
9 Years		6.1%	6.7%	2.7%	0.0%	4.3%	10.0%	4.3%	1.8%	4.8%
10 Years or More		18.4%	14.3%	2.7%	12.1%	14.3%	25.0%	10.6%	17.5%	14.7%
Missing Data		0.0%	0.0%	0.0%	0.0%	0.0%	0.0%	0.0%	0.0%	0.0%
Time to Degree for Transfers										
2 or Fewer Years		7.3%	17.0%	15.6%	5.9%	12.4%	14.3%	11.3%	10.6%	11.8%
3 Years		25.5%	34.1%	27.8%	38.8%	29.2%	7.1%	27.4%	29.8%	30.0%
4 Years		23.0%	23.1%	28.9%	32.9%	25.8%	28.6%	21.0%	22.3%	25.0%
5 Years		12.1%	10.4%	13.3%	5.9%	14.6%	14.3%	22.6%	12.8%	12.4%
6 Years		12.7%	5.5%	10.0%	1.2%	4.5%	7.1%	3.2%	6.4%	6.9%
7 Years		3.6%	3.3%	2.2%	3.5%	2.2%	7.1%	3.2%	2.1%	3.1%
8 Years		4.2%	1.1%	0.0%	1.2%	2.2%	7.1%	3.2%	4.3%	2.4%
9 Years or More		11.5%	5.5%	2.2%	10.6%	9.0%	14.3%	8.1%	11.7%	8.5%
Missing Data		0.0%	0.0%	0.0%	0.0%	0.0%	0.0%	0.0%	0.0%	0.0%
Graduating GPA (4 point scale)	mean	2.880	3.205	2.900	3.061	3.066	3.144	3.043	NA	3.032
	Std Dev	0.464	0.429	0.463	0.405	0.512	0.504	0.452	NA	0.473

Southern Illinois University at Edwardsville
Survey of 1994 Baccalaureate Graduates -- Five Years Out

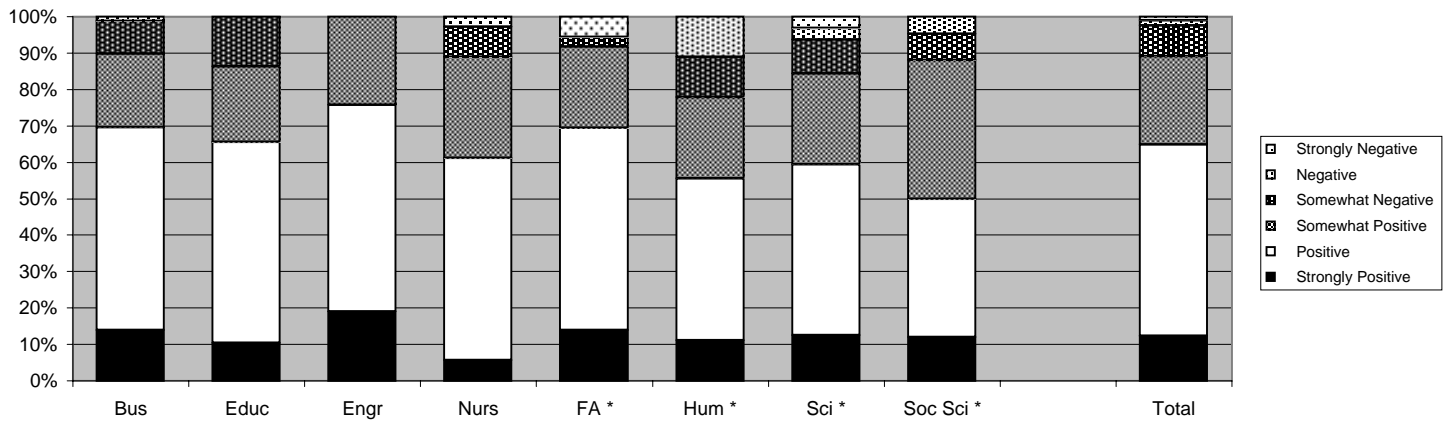
Comparison of All Graduates to Survey Respondents

		Survey Respondents								
School Detail		BUS	EDUC	ENGR	NURS	FA *	HUM*	SCI*	SOC S*	Total
Total		79	87	37	36	36	9	33	42	359
Female		58.2%	79.3%	21.6%	88.9%	75.0%	44.4%	39.4%	59.5%	62.4%
Male		41.8%	20.7%	78.4%	11.1%	25.0%	55.6%	60.6%	40.5%	37.6%
Missing Data		0.0%	0.0%	0.0%	0.0%	0.0%	0.0%	0.0%	0.0%	0.0%
White, Non-Hispanic		92.4%	92.0%	97.3%	94.4%	86.1%	100.0%	97.0%	88.1%	92.5%
Black, Non-Hispanic		6.3%	8.0%	2.7%	5.6%	13.9%	0.0%	0.0%	9.5%	6.7%
Asian/Pacific Islander		0.0%	0.0%	0.0%	0.0%	0.0%	0.0%	3.0%	2.4%	0.6%
American Indian/Alaskan Native		1.3%	0.0%	0.0%	0.0%	0.0%	0.0%	0.0%	0.0%	0.3%
Hispanic		0.0%	0.0%	0.0%	0.0%	0.0%	0.0%	0.0%	0.0%	0.0%
Non-Resident Alien		0.0%	0.0%	0.0%	0.0%	0.0%	0.0%	0.0%	0.0%	0.0%
Missing Data		0.0%	0.0%	0.0%	0.0%	0.0%	0.0%	0.0%	0.0%	0.0%
Age at Graduation	range	20 to 55	21 to 50	22 to 46	21 to 59	22 to 57	21 to 47	21 to 48	22 to 64	20 to 64
	median	23.9	24.7	23.9	29.5	24.0	23.8	23.8	23.5	24.1
Bachelor of Science		87.3%	94.3%	100.0%	100.0%	63.9%	0.0%	87.9%	66.7%	84.7%
Bachelor of Music		0.0%	0.0%	0.0%	0.0%	11.1%	0.0%	0.0%	0.0%	1.1%
Bachelor of Arts		0.0%	5.7%	0.0%	0.0%	25.0%	100.0%	12.1%	28.6%	10.9%
Bachelor of Fine Arts		0.0%	0.0%	0.0%	0.0%	0.0%	0.0%	0.0%	0.0%	0.0%
Bachelor of Sci in Accountancy		12.7%	0.0%	0.0%	0.0%	0.0%	0.0%	0.0%	0.0%	2.8%
Bachelor of Liberal Studies		0.0%	0.0%	0.0%	0.0%	0.0%	0.0%	0.0%	4.8%	0.6%
Missing Data		0.0%	0.0%	0.0%	0.0%	0.0%	0.0%	0.0%	0.0%	0.0%
Graduated Spring 1994		39.2%	50.6%	56.8%	33.3%	38.9%	44.4%	66.7%	40.5%	46.0%
Graduated Summer 1994		27.8%	10.3%	5.4%	5.6%	27.8%	22.2%	15.2%	26.2%	17.5%
Graduated Fall 1994		32.9%	39.1%	37.8%	61.1%	33.3%	33.3%	18.2%	33.3%	36.5%
Missing Data		0.0%	0.0%	0.0%	0.0%	0.0%	0.0%	0.0%	0.0%	0.0%
Matriculated as a New Freshman		45.6%	24.1%	37.8%	25.0%	44.4%	66.7%	51.5%	33.3%	37.0%
Matriculated as a Transfer		53.2%	74.7%	62.2%	75.0%	52.8%	33.3%	48.5%	61.9%	61.6%
Matriculated as a Non-Degree Student		1.3%	1.1%	0.0%	0.0%	2.8%	0.0%	0.0%	4.8%	1.4%
Missing Data		0.0%	0.0%	0.0%	0.0%	0.0%	0.0%	0.0%	0.0%	0.0%
Time to Degree for New Freshmen										
3 Years or Fewer		0.0%	0.0%	0.0%	0.0%	0.0%	0.0%	0.0%	0.0%	0.0%
4 Years		7.6%	23.8%	14.3%	33.3%	25.0%	16.7%	17.6%	21.4%	20.3%
5 Years		17.7%	23.8%	35.7%	33.3%	12.5%	33.3%	35.3%	28.6%	30.8%
6 Years		3.8%	19.0%	21.4%	22.2%	25.0%	16.7%	23.5%	42.9%	20.3%
7 Years		2.5%	9.5%	21.4%	0.0%	6.3%	0.0%	5.9%	0.0%	6.8%
8 Years		2.5%	0.0%	0.0%	0.0%	12.5%	16.7%	0.0%	0.0%	3.8%
9 Years		3.8%	4.8%	0.0%	0.0%	6.3%	0.0%	0.0%	0.0%	3.8%
10 Years or More		7.6%	19.0%	7.1%	11.1%	12.5%	16.7%	17.6%	7.1%	14.3%
Missing Data		0.0%	0.0%	0.0%	0.0%	0.0%	0.0%	0.0%	0.0%	0.0%
Time to Degree for Transfers										
2 or Fewer Years		5.1%	26.2%	13.0%	7.4%	15.8%	0.0%	18.8%	15.4%	16.3%
3 Years		13.9%	36.9%	43.5%	29.6%	31.6%	0.0%	25.0%	19.2%	30.8%
4 Years		13.9%	20.0%	21.7%	33.3%	21.1%	66.7%	18.8%	30.8%	24.9%
5 Years		3.8%	7.7%	8.7%	3.7%	0.0%	0.0%	18.8%	7.7%	7.2%
6 Years		6.3%	4.6%	13.0%	3.7%	0.0%	0.0%	6.3%	3.8%	6.3%
7 Years		1.3%	3.1%	0.0%	3.7%	5.3%	33.3%	6.3%	3.8%	3.6%
8 Years		1.3%	0.0%	0.0%	0.0%	5.3%	0.0%	0.0%	0.0%	0.9%
9 Years or More		7.6%	1.5%	0.0%	18.5%	21.1%	0.0%	6.3%	19.2%	10.0%
Missing Data		0.0%	0.0%	0.0%	0.0%	0.0%	0.0%	0.0%	0.0%	0.0%
Graduating GPA (4 point scale)	mean	2.991	3.333	3.049	3.098	3.049	3.457	3.095	NA	3.129
	Std Dev	0.443	0.385	0.458	0.413	0.616	0.297	0.432	NA	0.459

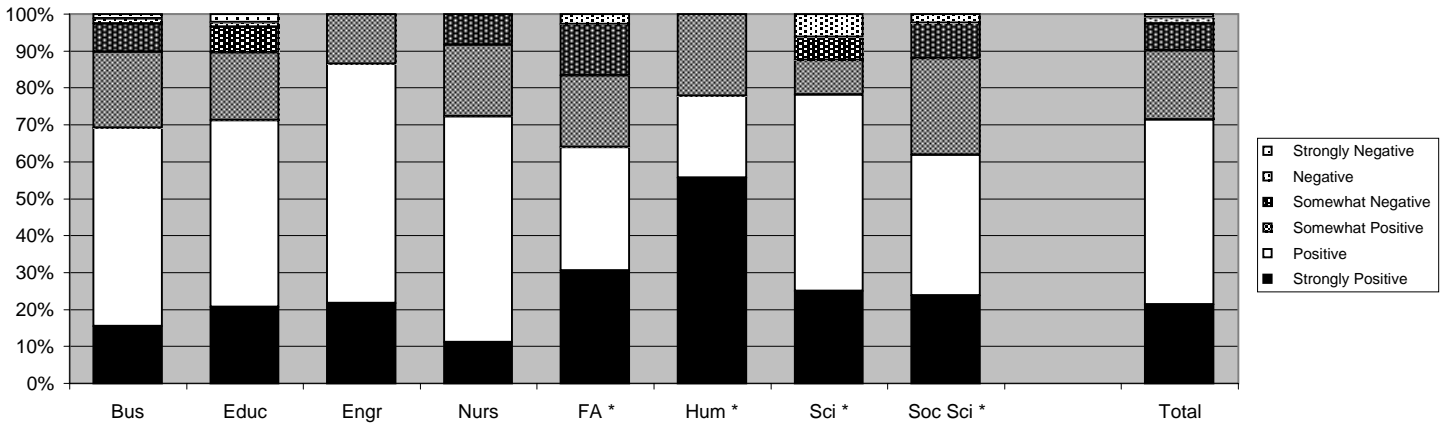
1994 Baccalaureate Graduates Five Years Out

Satisfaction

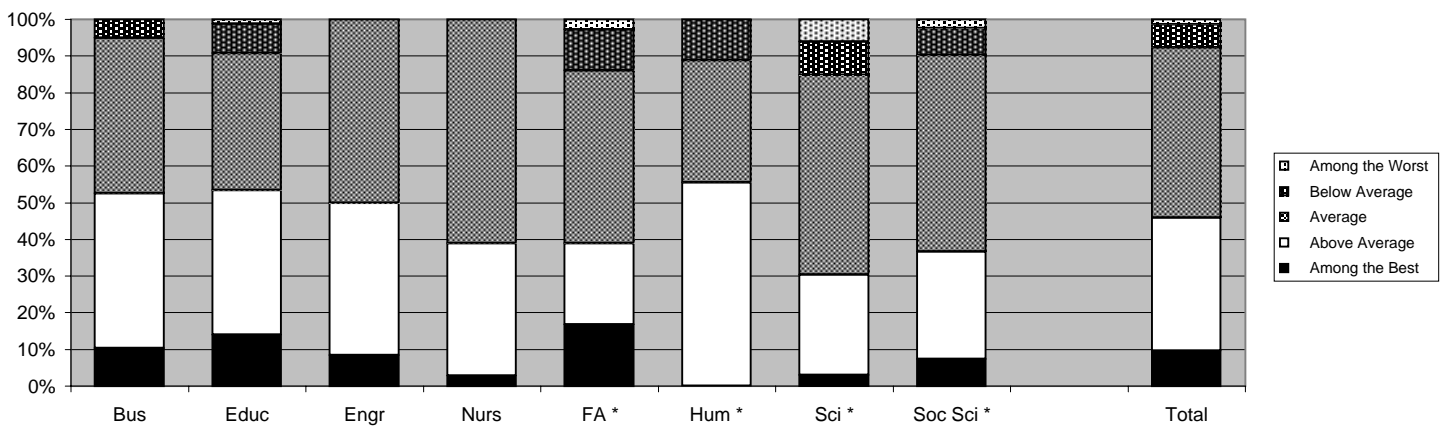
Present Attitude Toward the University



Present Attitude Towards Alumni's Bachelor's Degree Major

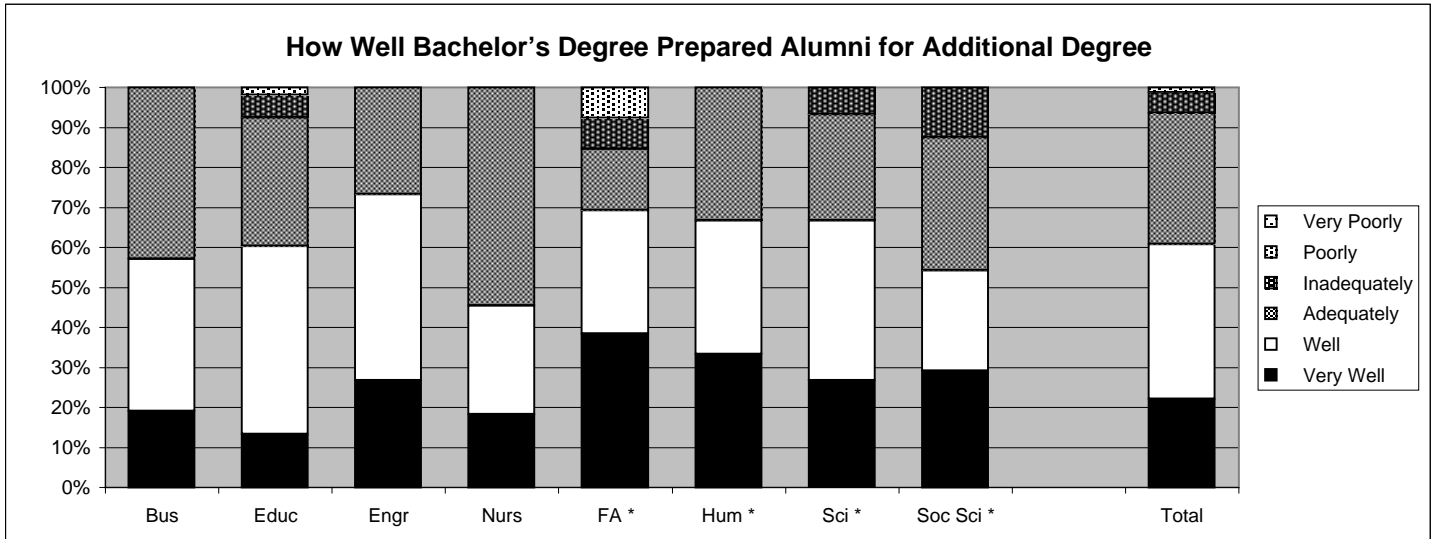
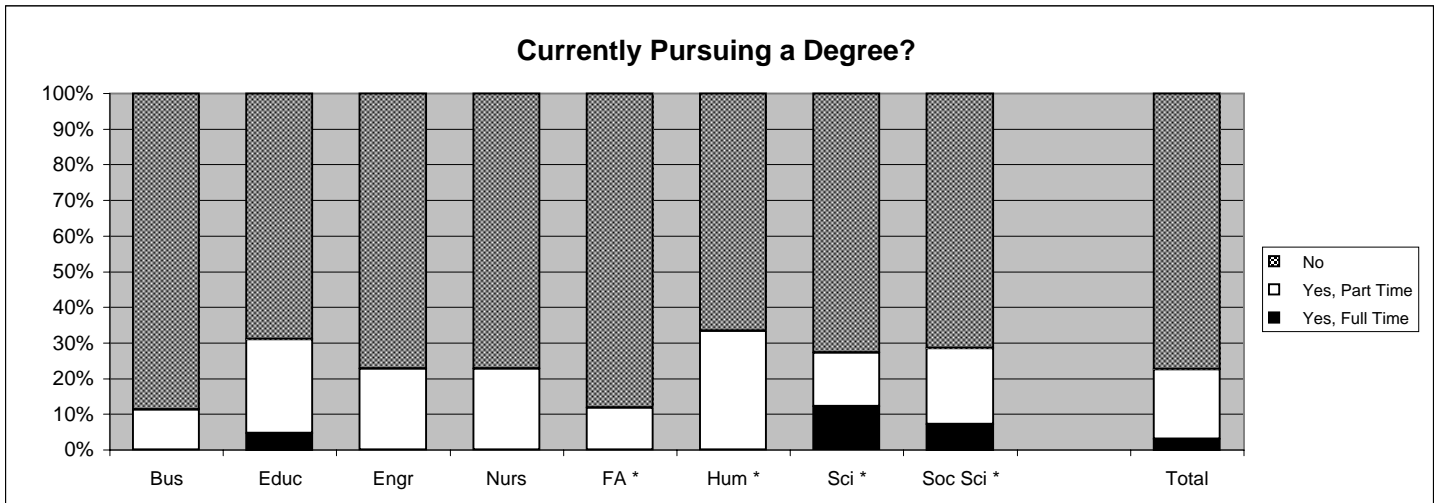
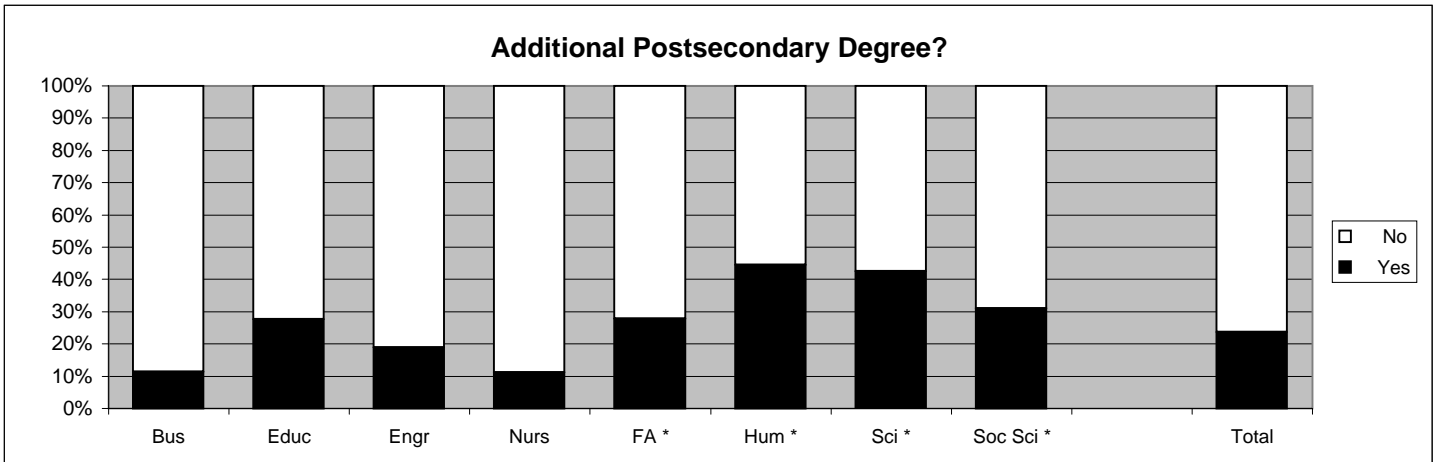


Quality of SIUE Education Relative to That of Friends at Other Schools



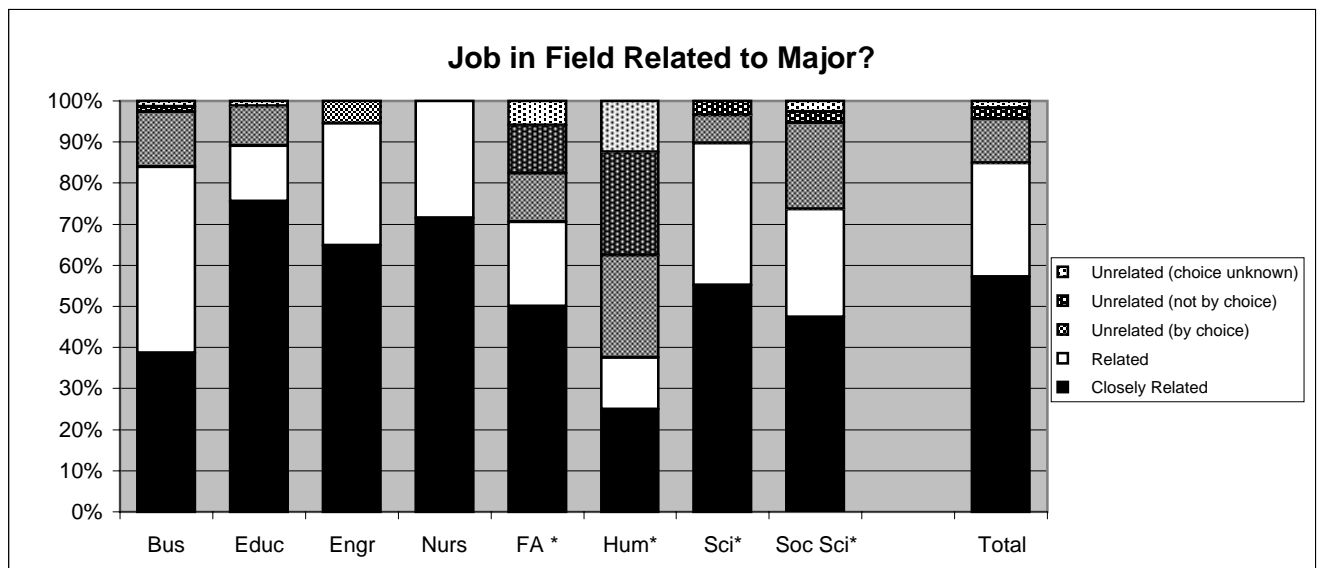
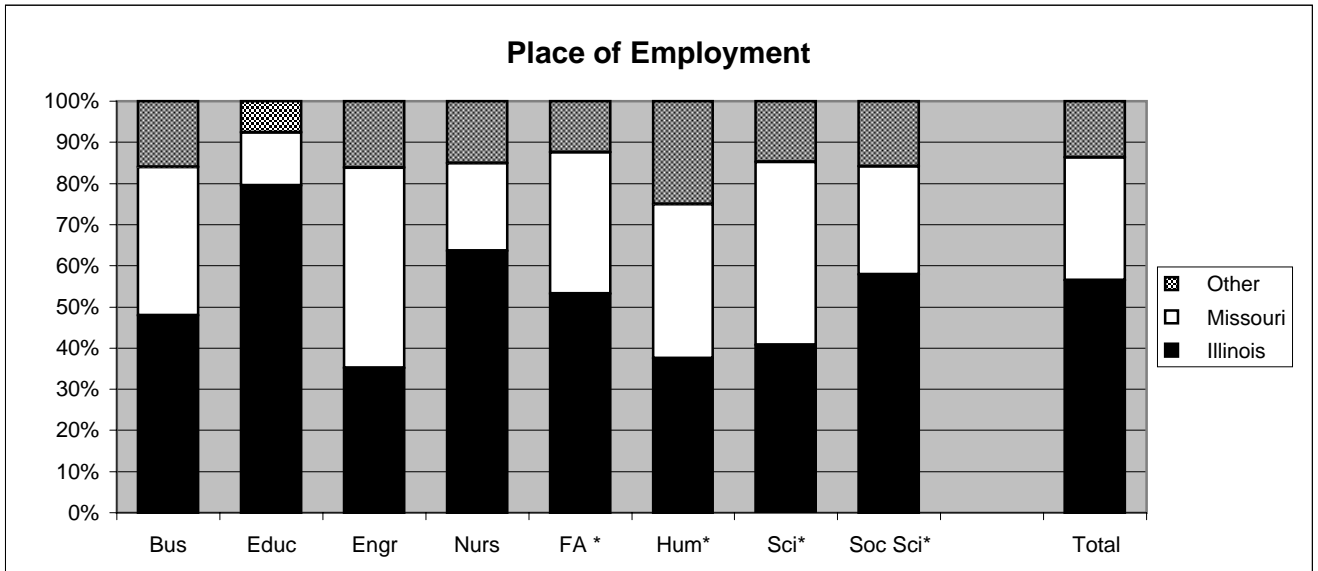
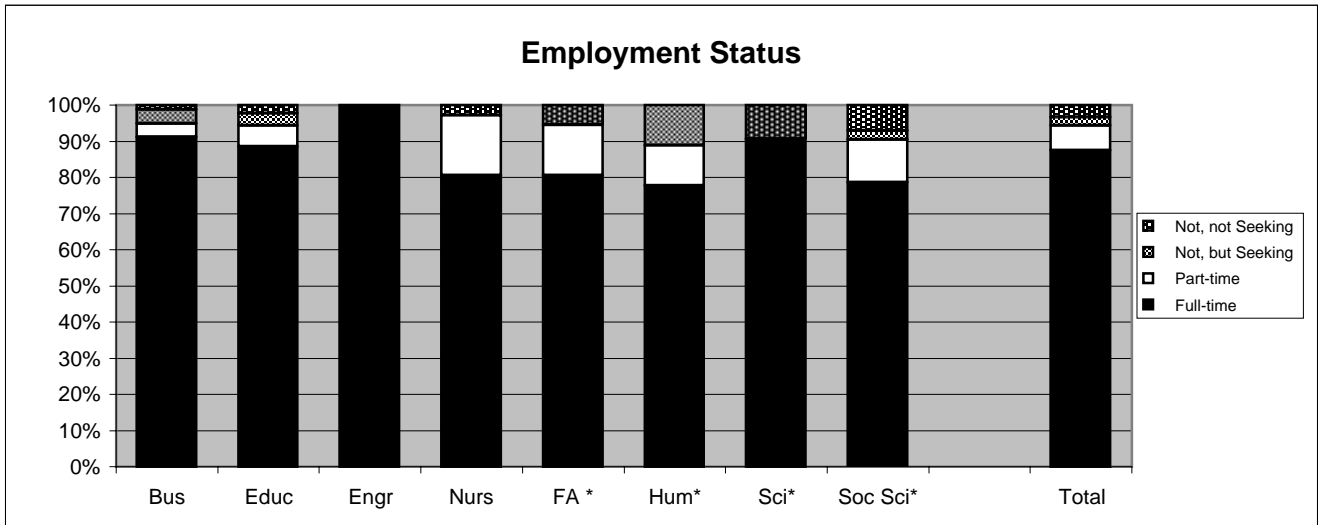
* With the exception of two programs, these schools now comprise the College of Arts and Sciences. Degrees in Human Services and Liberal Studies are included with the Social Sciences.

1994 Baccalaureat Graduates Five Years Out Additional Education



* With the exception of two programs, these schools now comprise the College of Arts and Sciences. Degrees in Human Services and Liberal Studies are included with the Social Sciences.

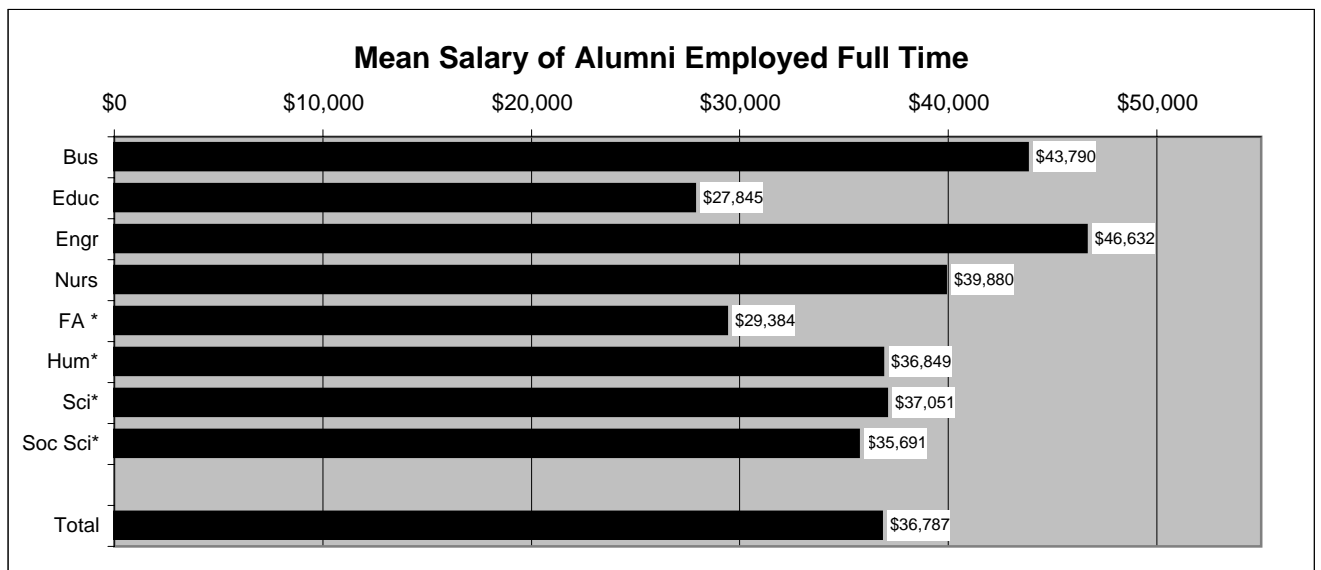
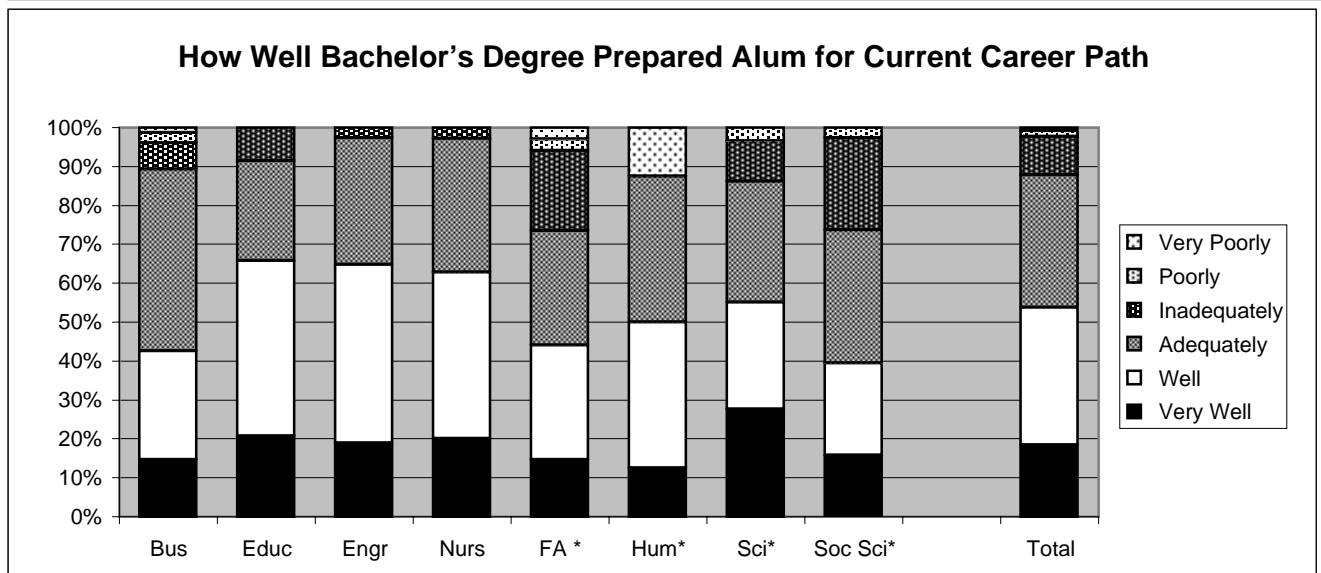
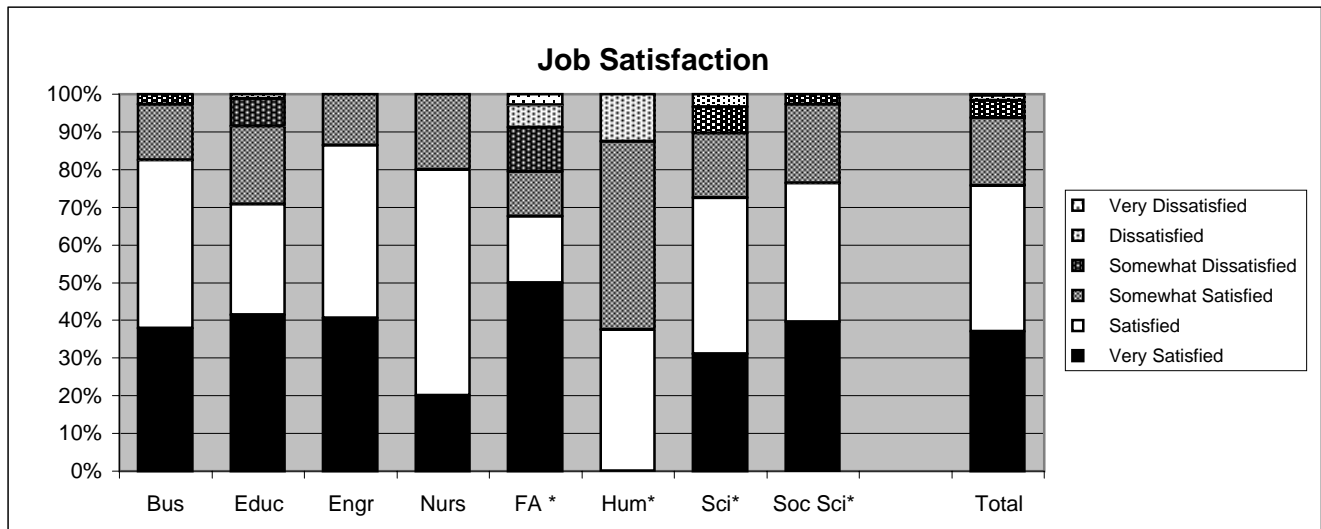
1994 Baccalaureate Graduates Five Years Out Employment



* With the exception of two programs, these schools now comprise the College of Arts and Sciences. Degrees in Human Services and Liberal Studies are included with the Social Sciences.

1994 Baccalaureate Graduates Five Years Out

Employment, *con't.*



* With the exception of two programs, these schools now comprise the College of Arts and Sciences. Degrees in Human Services and Liberal Studies are included with the Social Sciences.

Southern Illinois University Edwardsville
Survey of 1994 Baccalaureate Graduates -- Five Years Out
Survey Responses -- Part I
Employment Questions

School Detail	BUS	EDUC	ENGR	NURS	FA *	HUM*	SCI*	SOC S*	Total
Number of Survey Respondents	79	87	37	36	36	9	33	42	359
1. Number Employed:									
Full-time	91.1%	88.5%	100.0%	80.6%	80.6%	77.8%	90.6%	78.6%	87.4%
Part-time	3.8%	5.7%	0.0%	16.7%	13.9%	11.1%	0.0%	11.9%	7.0%
Not, but Seeking	3.8%	3.4%	0.0%	0.0%	0.0%	11.1%	0.0%	2.4%	2.2%
Not, not Seeking	1.3%	2.3%	0.0%	2.8%	5.6%	0.0%	9.4%	7.1%	3.4%
Number Responding	79	87	37	36	36	9	32	42	358
The remaining questions in Part I were to be answered only by respondents who were employed full-time or part-time.									
	75	82	37	35	34	8	29	38	338
2. Place of Employment									
Illinois	47.8%	79.5%	35.1%	63.6%	53.1%	37.5%	40.7%	57.9%	56.5%
Missouri	36.2%	12.8%	48.6%	21.2%	34.4%	37.5%	44.4%	26.3%	29.8%
Other	15.9%	7.7%	16.2%	15.2%	12.5%	25.0%	14.8%	15.8%	13.7%
Number Responding	69	78	37	33	32	8	27	38	322
3. Classification of Primary Employer									
Self-Employed or Private Practice	5.3%	6.1%	0.0%	2.9%	8.8%	0.0%	3.4%	2.6%	4.4%
Business (Industrial, Commercial or Service)	68.0%	2.4%	35.1%	8.6%	23.5%	37.5%	27.6%	10.5%	27.2%
Professional Firm (e.g., Engineering, Law)	12.0%	0.0%	40.5%	0.0%	5.9%	12.5%	3.4%	10.5%	9.5%
College or University	2.7%	1.2%	0.0%	0.0%	8.8%	25.0%	10.3%	7.9%	4.1%
Elementary/Secondary School	4.0%	72.0%	0.0%	0.0%	26.5%	0.0%	27.6%	21.1%	25.7%
Health Agency (e.g. Hospital, Clinic)	1.3%	6.1%	2.7%	65.7%	5.9%	12.5%	17.2%	10.5%	12.4%
Federal, State, or Local Government	2.7%	1.2%	21.6%	17.1%	2.9%	0.0%	0.0%	21.1%	7.7%
Armed Services	0.0%	0.0%	0.0%	2.9%	2.9%	0.0%	3.4%	0.0%	0.9%
NonProfit (Non-Government)	2.7%	9.8%	0.0%	2.9%	8.8%	12.5%	3.4%	15.8%	6.5%
Other	1.3%	1.2%	0.0%	0.0%	5.9%	0.0%	3.4%	0.0%	1.5%
Number Responding	75	82	37	35	34	8	29	38	338
4. Job Satisfaction									
Very Satisfied	37.8%	41.5%	40.5%	20.0%	50.0%	0.0%	31.0%	39.5%	37.1%
Satisfied	44.6%	29.3%	45.9%	60.0%	17.6%	37.5%	41.4%	36.8%	38.6%
Somewhat Satisfied	14.9%	20.7%	13.5%	20.0%	11.8%	50.0%	17.2%	21.1%	18.1%
Somewhat Dissatisfied	2.7%	7.3%	0.0%	0.0%	11.8%	0.0%	6.9%	2.6%	4.5%
Dissatisfied	0.0%	1.2%	0.0%	0.0%	5.9%	12.5%	3.4%	0.0%	1.5%
Very Dissatisfied	0.0%	0.0%	0.0%	0.0%	2.9%	0.0%	0.0%	0.0%	0.3%
Number Responding	74	82	37	35	34	8	29	38	337
5. Job in Field?									
Closely Related	38.7%	75.6%	64.9%	71.4%	50.0%	25.0%	55.2%	47.4%	57.1%
Related	45.3%	13.4%	29.7%	28.6%	20.6%	12.5%	34.5%	26.3%	27.8%
Unrelated (by choice)	13.3%	9.8%	5.4%	0.0%	11.8%	25.0%	6.9%	21.1%	10.7%
Unrelated (not by choice)	1.3%	0.0%	0.0%	0.0%	11.8%	25.0%	3.4%	2.6%	2.7%
Unrelated (choice unknown)	1.3%	1.2%	0.0%	0.0%	5.9%	12.5%	0.0%	2.6%	1.8%
Number Responding	75	82	37	35	34	8	29	38	338
6. Number of Employers After Graduation									
One	28.0%	45.1%	37.8%	20.0%	32.4%	0.0%	41.4%	15.8%	32.0%
Two	37.3%	28.0%	51.4%	42.9%	29.4%	42.9%	27.6%	31.6%	35.0%
Three to Six	30.7%	25.6%	10.8%	37.1%	38.2%	57.1%	31.0%	50.0%	31.5%
More than Six	4.0%	1.2%	0.0%	0.0%	0.0%	0.0%	0.0%	2.6%	1.5%
Number Responding	75	82	37	35	34	7	29	38	337

* With the exception of two programs, these schools now comprise the College of Arts and Sciences. Degrees in Human Services and Liberal Studies are included with the Social Sciences.

Southern Illinois University Edwardsville
Survey of 1994 Baccalaureate Graduates -- Five Years Out
Survey Responses -- Part I
Employment Questions

School Detail, con't.	BUS	EDUC	ENGR	NURS	FA *	HUM*	SCI*	SOC S*	Total
7. Annual Earned Income in Current Job Before Taxes									
Employed Full-Time									
Less Than \$25,000	8.6%	34.2%	2.8%	8.0%	27.6%	28.6%	7.7%	21.9%	17.9%
\$25,000 to \$29,999	10.0%	25.0%	0.0%	8.0%	10.3%	0.0%	23.1%	21.9%	14.6%
\$30,000 to \$34,999	12.9%	25.0%	5.6%	20.0%	34.5%	14.3%	15.4%	18.8%	18.6%
\$35,000 to \$39,999	11.4%	7.9%	19.4%	16.0%	13.8%	0.0%	26.9%	9.4%	13.0%
\$40,000 to \$44,999	12.9%	6.6%	19.4%	12.0%	3.4%	0.0%	3.8%	15.6%	10.3%
\$45,000 to 49,999	18.6%	0.0%	16.7%	16.0%	6.9%	28.6%	3.8%	6.3%	10.0%
\$50,000 or More	25.7%	1.3%	36.1%	20.0%	3.4%	28.6%	19.2%	6.3%	15.6%
Number Responding	70	76	36	25	29	7	26	32	301
Mean Salary	\$43,790	\$27,845	\$46,632	\$39,880	\$29,384	\$36,849	\$37,051	\$35,691	\$36,787
Employed Part-Time									
Less Than 20,000	50.0%	50.0%	--	0.0%	100.0%	100.0%	--	100.0%	57.9%
20,000 to \$24,999	0.0%	0.0%	--	16.7%	0.0%	0.0%	--	0.0%	5.3%
\$24,000 to \$29,999	0.0%	50.0%	--	66.7%	0.0%	0.0%	--	0.0%	26.3%
\$30,000 to \$34,999	0.0%	0.0%	--	16.7%	0.0%	0.0%	--	0.0%	5.3%
\$35,000 or More	50.0%	0.0%	--	0.0%	0.0%	0.0%	--	0.0%	5.3%
Number Responding	2	2	0	6	3	1	0	5	19
Mean Salary	\$26,000	\$17,250	--	\$26,500	\$10,000	\$10,000	--	\$17,284	\$11,677
8. Bachelor's Degree Preparation for Career Path									
Very Well	14.7%	20.7%	18.9%	20.0%	14.7%	12.5%	27.6%	15.8%	18.3%
Well	28.0%	45.1%	45.9%	42.9%	29.4%	37.5%	27.6%	23.7%	35.5%
Adequately	46.7%	25.6%	32.4%	34.3%	29.4%	37.5%	31.0%	34.2%	34.0%
Inadequately	6.7%	8.5%	2.7%	2.9%	20.6%	0.0%	10.3%	23.7%	9.8%
Poorly	2.7%	0.0%	0.0%	0.0%	2.9%	0.0%	3.4%	2.6%	1.5%
Very Poorly	1.3%	0.0%	0.0%	0.0%	2.9%	12.5%	0.0%	0.0%	0.9%
Number Responding	75	82	37	35	34	8	29	38	338
9a. Primary Occupation									
Management	16.2%	6.1%	5.4%	0.0%	6.3%	25.0%	3.6%	0.0%	7.2%
Business Operations	13.5%	2.4%	0.0%	2.9%	6.3%	12.5%	0.0%	2.7%	5.1%
Financial Specialists	17.6%	1.2%	0.0%	0.0%	0.0%	12.5%	0.0%	2.7%	4.8%
Computer Specialists	16.2%	0.0%	8.1%	0.0%	6.3%	25.0%	17.9%	8.1%	8.1%
Mathematical Scientists and Technicians	0.0%	1.2%	2.7%	0.0%	3.1%	0.0%	0.0%	0.0%	0.9%
Architects, Surveyors, and Cartographers	0.0%	0.0%	0.0%	0.0%	0.0%	0.0%	0.0%	2.7%	0.3%
Engineers and Related Technicians	1.4%	0.0%	81.1%	0.0%	0.0%	0.0%	3.6%	0.0%	9.6%
Life and Physical Scientists	0.0%	0.0%	0.0%	0.0%	0.0%	0.0%	21.4%	2.7%	2.1%
Social Scientists	0.0%	1.2%	0.0%	0.0%	3.1%	0.0%	0.0%	8.1%	1.5%
Health: Doctors	0.0%	0.0%	0.0%	0.0%	0.0%	0.0%	3.6%	0.0%	0.3%
Health: Registered Nurses	0.0%	0.0%	0.0%	85.3%	0.0%	0.0%	0.0%	0.0%	8.7%
Health: Therapists	0.0%	1.2%	0.0%	0.0%	18.8%	0.0%	0.0%	0.0%	2.1%
Health: Other Health Practs, Profs & supp	0.0%	1.2%	0.0%	8.8%	0.0%	0.0%	14.3%	2.7%	2.7%
Community and Social Service	0.0%	6.1%	0.0%	0.0%	3.1%	0.0%	0.0%	29.7%	5.1%
Legal: Attorneys/Judges	0.0%	0.0%	0.0%	0.0%	0.0%	0.0%	0.0%	2.7%	0.3%
Legal: Legal Support Workers	1.4%	0.0%	0.0%	0.0%	0.0%	0.0%	0.0%	5.4%	0.9%
Education: Early Childhood Teachers	0.0%	8.5%	0.0%	0.0%	0.0%	0.0%	0.0%	0.0%	2.1%
Education: Elementary School Teachers	0.0%	36.6%	0.0%	0.0%	3.1%	0.0%	0.0%	2.7%	9.6%
Education: Middle School Teachers	0.0%	6.1%	0.0%	0.0%	0.0%	0.0%	3.6%	0.0%	1.8%
continued on nex page									

* With the exception of two programs, these schools now comprise the College of Arts and Sciences. Degrees in Human Services and Liberal Studies are included with the Social Sciences.

Southern Illinois University Edwardsville
Survey of 1994 Baccalaureate Graduates -- Five Years Out
Survey Responses -- Part I
Employment Questions

School Detail, con't.	BUS	EDUC	ENGR	NURS	FA *	HUM*	SCI*	SOC S*	Total
Education: Secondary Teachers	4.1%	9.8%	0.0%	0.0%	3.1%	0.0%	25.0%	10.8%	6.9%
Education: Special Education Teachers	0.0%	8.5%	0.0%	0.0%	0.0%	0.0%	0.0%	0.0%	2.1%
Education: Other, except Administrators	1.4%	4.9%	0.0%	0.0%	12.5%	12.5%	0.0%	8.1%	3.9%
Library Occupations	0.0%	0.0%	0.0%	0.0%	0.0%	0.0%	0.0%	0.0%	0.0%
Arts and Design Workers	0.0%	0.0%	0.0%	0.0%	0.0%	0.0%	0.0%	0.0%	0.0%
Entertainment, Performers, Sports & Related	0.0%	0.0%	0.0%	0.0%	6.3%	0.0%	3.6%	2.7%	1.2%
Media and Communication Workers	0.0%	0.0%	0.0%	0.0%	9.4%	0.0%	0.0%	0.0%	0.9%
Sales	17.6%	3.7%	0.0%	0.0%	9.4%	0.0%	0.0%	0.0%	5.7%
Office and Administration	2.7%	0.0%	0.0%	0.0%	6.3%	12.5%	0.0%	2.7%	1.8%
Protective Services	1.4%	0.0%	0.0%	0.0%	0.0%	0.0%	0.0%	5.4%	0.9%
Food Preparation and Serving	1.4%	0.0%	0.0%	0.0%	0.0%	0.0%	0.0%	0.0%	0.3%
Buildings and Grounds Maintenance	0.0%	1.2%	0.0%	0.0%	0.0%	0.0%	0.0%	0.0%	0.3%
Personal Care and Services	0.0%	0.0%	0.0%	2.9%	3.1%	0.0%	0.0%	0.0%	0.6%
Farming, Fishing, and Forestry	0.0%	0.0%	0.0%	0.0%	0.0%	0.0%	0.0%	0.0%	0.0%
Construction and Extractive	0.0%	0.0%	0.0%	0.0%	0.0%	0.0%	0.0%	0.0%	0.0%
Installation, Maintenance, and Repair	2.7%	0.0%	0.0%	0.0%	0.0%	0.0%	0.0%	0.0%	0.6%
Production	2.7%	0.0%	2.7%	0.0%	0.0%	0.0%	3.6%	0.0%	1.2%
Transportation and Material Moving	0.0%	0.0%	0.0%	0.0%	0.0%	0.0%	0.0%	0.0%	0.0%
Military	0.0%	0.0%	0.0%	0.0%	0.0%	0.0%	0.0%	0.0%	0.0%
Number Responding	74	82	37	34	32	8	28	37	332
9b. Industry									
Agriculture, Forestry, and Fishing	1.4%	0.0%	2.9%	0.0%	3.6%	0.0%	0.0%	2.8%	1.3%
Mining	0.0%	0.0%	0.0%	0.0%	0.0%	0.0%	0.0%	0.0%	0.0%
Utilities	2.8%	0.0%	8.8%	0.0%	3.6%	0.0%	0.0%	0.0%	1.9%
Construction	1.4%	0.0%	8.8%	0.0%	0.0%	0.0%	3.8%	0.0%	1.6%
Manufacturing	16.9%	0.0%	23.5%	0.0%	0.0%	0.0%	7.7%	2.8%	7.4%
Wholesale Trade	7.0%	2.6%	0.0%	0.0%	0.0%	0.0%	0.0%	2.8%	2.6%
Retail Trade	8.5%	1.3%	0.0%	0.0%	0.0%	0.0%	0.0%	0.0%	2.3%
Transportation	5.6%	0.0%	5.9%	0.0%	3.6%	0.0%	0.0%	0.0%	2.3%
Information	1.4%	0.0%	0.0%	0.0%	3.6%	14.3%	3.8%	0.0%	1.3%
Finance & Insurance	12.7%	0.0%	0.0%	3.2%	0.0%	0.0%	0.0%	0.0%	3.2%
Real Estate & Rental & Leasing	0.0%	0.0%	0.0%	0.0%	3.6%	0.0%	0.0%	0.0%	0.3%
Professional, Scientific & Technical Services	12.7%	2.6%	47.1%	3.2%	7.1%	14.3%	23.1%	22.2%	14.5%
Management of Companies & Enterprises	2.8%	0.0%	0.0%	0.0%	0.0%	14.3%	0.0%	0.0%	1.0%
Admin & Suppt, Waste Mgmt & Remedtn Svcs	1.4%	0.0%	0.0%	0.0%	0.0%	0.0%	3.8%	2.8%	1.0%
Educational Services	5.6%	75.6%	0.0%	0.0%	35.7%	28.6%	38.5%	30.6%	30.9%
Health Care & Social Assistance	4.2%	14.1%	2.9%	93.5%	10.7%	14.3%	19.2%	22.2%	19.6%
Arts, Entertainment & Recreation	1.4%	1.3%	0.0%	0.0%	10.7%	14.3%	0.0%	0.0%	1.9%
Accommodations & Food Services	1.4%	0.0%	0.0%	0.0%	0.0%	0.0%	0.0%	0.0%	0.3%
Other Services (except Public Admin)	12.7%	1.3%	0.0%	0.0%	10.7%	0.0%	0.0%	11.1%	5.5%
Public Administration	0.0%	1.3%	0.0%	0.0%	7.1%	0.0%	0.0%	2.8%	1.3%
Number Responding	71	78	34	31	28	7	26	36	311

* With the exception of two programs, these schools now comprise the College of Arts and Sciences. Degrees in Human Services and Liberal Studies are included with the Social Sciences.

Southern Illinois University Edwardsville
Survey of 1994 Baccalaureate Graduates -- Five Years Out
Survey Responses -- Part II
Education Questions

School Detail	BUS	EDUC	ENGR	NURS	FA *	HUM*	SCI*	SOC S*	Total
Number of Survey Respondents	79	87	37	36	36	9	33	42	359
10. Additional Postsecondary Degree?									
Yes **	11.4%	27.6%	18.9%	11.1%	27.8%	44.4%	42.4%	31.0%	23.7%
No	88.6%	72.4%	81.1%	88.9%	72.2%	55.6%	57.6%	69.0%	76.3%
Number Responding	79	87	37	36	36	9	33	42	359
If Yes, What Degree?									
Associate's	0.0%	4.2%	0.0%	25.0%	0.0%	0.0%	0.0%	0.0%	2.4%
Second Bachelor's	11.1%	8.3%	0.0%	0.0%	10.0%	25.0%	7.1%	0.0%	7.1%
Academic Master's (MA, MS, MEd, etc)	22.2%	66.7%	57.1%	25.0%	70.0%	50.0%	42.9%	41.7%	51.2%
Prof. Master's or Ed Specialist	55.6%	16.7%	28.6%	25.0%	20.0%	25.0%	7.1%	50.0%	26.2%
Medicine (MD, OD)	0.0%	0.0%	0.0%	0.0%	0.0%	0.0%	7.1%	0.0%	1.2%
Health Prof. (dentistry, pharmacy, etc.)	0.0%	0.0%	0.0%	0.0%	0.0%	0.0%	21.4%	0.0%	3.6%
Theology/Divinity	0.0%	0.0%	0.0%	0.0%	0.0%	0.0%	0.0%	0.0%	0.0%
Law (LLB, JD)	0.0%	0.0%	0.0%	0.0%	0.0%	0.0%	0.0%	8.3%	1.2%
Doctorate (PhD, EdD, DA, DBA, etc.)	0.0%	0.0%	0.0%	0.0%	0.0%	0.0%	0.0%	0.0%	0.0%
Other	11.1%	4.2%	14.3%	25.0%	0.0%	0.0%	14.3%	0.0%	7.1%
Number Responding	9	24	7	4	10	4	14	12	84
11. Currently Pursuing a Degree?									
Yes, Full Time **	0.0%	4.6%	0.0%	0.0%	0.0%	0.0%	12.1%	7.1%	3.1%
Yes, Part Time **	11.4%	26.4%	22.9%	22.9%	11.8%	33.3%	15.2%	21.4%	19.5%
No	88.6%	69.0%	77.1%	77.1%	88.2%	66.7%	72.7%	71.4%	77.4%
Number Responding	79	87	35	35	34	9	33	42	354
If Yes, What Degree?									
Associate's	11.1%	0.0%	0.0%	0.0%	0.0%	0.0%	0.0%	0.0%	1.3%
Second Bachelor's	0.0%	3.7%	12.5%	0.0%	0.0%	0.0%	0.0%	16.7%	5.0%
Academic Master's (MA, MS, MEd, etc)	22.2%	70.4%	75.0%	87.5%	75.0%	66.7%	44.4%	41.7%	60.0%
Prof. Master's or Ed Specialist	66.7%	18.5%	12.5%	12.5%	25.0%	0.0%	22.2%	25.0%	23.8%
Medicine (MD, OD)	0.0%	0.0%	0.0%	0.0%	0.0%	0.0%	11.1%	0.0%	1.3%
Health Prof. (dentistry, pharmacy, etc.)	0.0%	0.0%	0.0%	0.0%	0.0%	0.0%	0.0%	0.0%	0.0%
Theology/Divinity	0.0%	0.0%	0.0%	0.0%	0.0%	0.0%	0.0%	0.0%	0.0%
Law (LLB, JD)	0.0%	0.0%	0.0%	0.0%	0.0%	0.0%	0.0%	8.3%	1.3%
Doctorate (PhD, EdD, DA, DBA, etc.)	0.0%	3.7%	0.0%	0.0%	0.0%	33.3%	11.1%	8.3%	5.0%
Other	0.0%	3.7%	0.0%	0.0%	0.0%	0.0%	11.1%	0.0%	2.5%
Number Responding	9	27	8	8	4	3	9	12	80
12. Bachelor's Degree Preparation for Additional Degree									
Very Well	19.0%	13.2%	26.7%	18.2%	38.5%	33.3%	26.7%	29.2%	22.2%
Well	38.1%	47.2%	46.7%	27.3%	30.8%	33.3%	40.0%	25.0%	38.6%
Adequately	42.9%	32.1%	26.7%	54.5%	15.4%	33.3%	26.7%	33.3%	32.9%
Inadequately	0.0%	5.7%	0.0%	0.0%	7.7%	0.0%	6.7%	12.5%	5.1%
Poorly	0.0%	1.9%	0.0%	0.0%	7.7%	0.0%	0.0%	0.0%	1.3%
Very Poorly	0.0%	0.0%	0.0%	0.0%	0.0%	0.0%	0.0%	0.0%	0.0%
Number Responding	21	53	15	11	13	6	15	24	158

* With the exception of two programs, these schools now comprise the College of Arts and Sciences. Degrees in Human Services and Liberal Studies are included with the Social Sciences.

** The responses marked with asterisks each lead to a related question which was to be answered only by those who selected the asterisked responses.

Southern Illinois University Edwardsville
Survey of 1994 Baccalaureate Graduates -- Five Years Out
Survey Responses -- Part III
Satisfaction Questions

School Detail	BUS	EDUC	ENGR	NURS	FA *	HUM*	SCI*	SOC S*	Total
Number of Survey Respondents	79	87	37	36	36	9	33	42	359
13. Present Attitude Towards the University									
Strongly Positive	13.9%	10.3%	18.9%	5.6%	13.9%	11.1%	12.5%	11.9%	12.3%
Positive	55.7%	55.2%	56.8%	55.6%	55.6%	44.4%	46.9%	38.1%	52.5%
Somewhat Positive	20.3%	20.7%	24.3%	27.8%	22.2%	22.2%	25.0%	38.1%	24.3%
Somewhat Negative	8.9%	13.8%	0.0%	8.3%	2.8%	11.1%	9.4%	7.1%	8.4%
Negative	1.3%	0.0%	0.0%	0.0%	0.0%	11.1%	3.1%	4.8%	1.4%
Strongly Negative	0.0%	0.0%	0.0%	2.8%	5.6%	0.0%	3.1%	0.0%	1.1%
Number Responding	79	87	37	36	36	9	32	42	358
14. Present Attitude Towards your Bachelor's Degree Major									
Strongly Positive	15.4%	20.7%	21.6%	11.1%	30.6%	55.6%	25.0%	23.8%	21.3%
Positive	53.8%	50.6%	64.9%	61.1%	33.3%	22.2%	53.1%	38.1%	50.1%
Somewhat Positive	20.5%	18.4%	13.5%	19.4%	19.4%	22.2%	9.4%	26.2%	18.8%
Somewhat Negative	7.7%	6.9%	0.0%	8.3%	13.9%	0.0%	6.3%	9.5%	7.3%
Negative	1.3%	1.1%	0.0%	0.0%	2.8%	0.0%	6.3%	2.4%	1.7%
Strongly Negative	1.3%	2.3%	0.0%	0.0%	0.0%	0.0%	0.0%	0.0%	0.8%
Number Responding	78	87	37	36	36	9	32	42	357

* With the exception of two programs, these schools now comprise the College of Arts and Sciences. Degrees in Human Services and Liberal Studies are included with the Social Sciences.

3/30/00

Southern Illinois University Edwardsville
Survey of 1994 Baccalaureate Graduates -- Five Years Out
Survey Responses -- Part IV
Educational Effectiveness Questions

School Detail	BUS	EDUC	ENGR	NURS	FA *	HUM*	SCI*	SOC S*	Total
Number of Survey Respondents	79	87	37	36	36	9	33	42	359
15. Helpfulness of University Experiences in:									
A. Developing Critical Thinking Ability									
Extremely Helpful	9.0%	8.0%	18.9%	5.6%	25.0%	22.2%	0.0%	11.9%	10.9%
Very Helpful	46.2%	39.1%	51.4%	47.2%	33.3%	66.7%	33.3%	40.5%	42.5%
Moderately Helpful	39.7%	40.2%	27.0%	41.7%	33.3%	0.0%	39.4%	40.5%	37.2%
Slightly Helpful	5.1%	5.7%	2.7%	5.6%	2.8%	0.0%	21.2%	4.8%	6.1%
Not Helpful	0.0%	6.9%	0.0%	0.0%	5.6%	11.1%	6.1%	2.4%	3.4%
Number Responding	78	87	37	36	36	9	33	42	358
B. Developing Sense of Ethics									
Extremely Helpful	5.1%	3.4%	5.4%	8.3%	5.6%	22.2%	0.0%	7.1%	5.3%
Very Helpful	32.1%	25.3%	29.7%	44.4%	33.3%	22.2%	15.2%	35.7%	30.2%
Moderately Helpful	48.7%	40.2%	45.9%	41.7%	30.6%	22.2%	48.5%	28.6%	40.8%
Slightly Helpful	7.7%	16.1%	13.5%	5.6%	11.1%	11.1%	18.2%	21.4%	13.1%
Not Helpful	6.4%	14.9%	5.4%	0.0%	19.4%	22.2%	18.2%	7.1%	10.6%
Number Responding	78	87	37	36	36	9	33	42	358
C. Understanding People with Different Backgrounds, Habits, Values, Appearances and Abilities									
Extremely Helpful	10.3%	14.9%	8.1%	8.3%	19.4%	33.3%	6.1%	16.7%	12.8%
Very Helpful	41.0%	40.2%	32.4%	44.4%	36.1%	22.2%	24.2%	50.0%	38.8%
Moderately Helpful	25.6%	27.6%	43.2%	38.9%	30.6%	33.3%	33.3%	21.4%	30.2%
Slightly Helpful	21.8%	10.3%	10.8%	2.8%	5.6%	11.1%	21.2%	9.5%	12.6%
Not Helpful	1.3%	6.9%	5.4%	5.6%	8.3%	0.0%	15.2%	2.4%	5.6%
Number Responding	78	87	37	36	36	9	33	42	358
D. Becoming a More Active Citizen									
Extremely Helpful	1.3%	3.4%	8.1%	0.0%	5.6%	0.0%	0.0%	2.4%	2.8%
Very Helpful	15.4%	17.2%	18.9%	19.4%	27.8%	33.3%	12.1%	17.1%	18.2%
Moderately Helpful	42.3%	36.8%	29.7%	50.0%	33.3%	22.2%	36.4%	36.6%	37.8%
Slightly Helpful	19.2%	24.1%	21.6%	16.7%	25.0%	33.3%	36.4%	22.0%	23.2%
Not Helpful	21.8%	18.4%	21.6%	13.9%	8.3%	11.1%	15.2%	22.0%	17.9%
Number Responding	78	87	37	36	36	9	33	41	357
E. Improving Quality of Life (aside from financial benefits)									
Extremely Helpful	3.8%	9.2%	5.4%	2.8%	8.3%	33.3%	3.1%	10.0%	7.0%
Very Helpful	29.5%	32.2%	32.4%	36.1%	38.9%	44.4%	28.1%	47.5%	34.4%
Moderately Helpful	44.9%	32.2%	40.5%	47.2%	30.6%	11.1%	34.4%	27.5%	36.3%
Slightly Helpful	17.9%	16.1%	13.5%	8.3%	13.9%	0.0%	18.8%	12.5%	14.6%
Not Helpful	3.8%	10.3%	8.1%	5.6%	8.3%	11.1%	15.6%	2.5%	7.6%
Number Responding	78	87	37	36	36	9	32	40	355
F. Developing Reasoning Skills									
Extremely Helpful	10.3%	6.9%	21.6%	8.3%	13.9%	44.4%	3.0%	12.2%	11.2%
Very Helpful	61.5%	41.4%	40.5%	38.9%	41.7%	44.4%	33.3%	43.9%	45.1%
Moderately Helpful	24.4%	34.5%	32.4%	44.4%	33.3%	0.0%	45.5%	36.6%	33.3%
Slightly Helpful	3.8%	9.2%	5.4%	8.3%	8.3%	0.0%	9.1%	4.9%	6.7%
Not Helpful	0.0%	8.0%	0.0%	0.0%	2.8%	11.1%	9.1%	2.4%	3.6%
Number Responding	78	87	37	36	36	9	33	41	357

* With the exception of two programs, these schools now comprise the College of Arts and Sciences. Degrees in Human Services and Liberal Studies are included with the Social Sciences.

Southern Illinois University Edwardsville
Survey of 1994 Baccalaureate Graduates -- Five Years Out
Survey Responses -- Part IV
Educational Effectiveness Questions

School Detail, con't.	BUS	EDUC	ENGR	NURS	FA *	HUM*	SCI*	SOC S*	Total
G. Viewing Problems from Different Perspectives									
Extremely Helpful	12.8%	11.5%	10.8%	13.9%	13.9%	33.3%	3.0%	14.6%	12.3%
Very Helpful	50.0%	46.0%	48.6%	41.7%	36.1%	44.4%	39.4%	41.5%	44.5%
Moderately Helpful	29.5%	28.7%	35.1%	33.3%	38.9%	0.0%	36.4%	39.0%	32.2%
Slightly Helpful	6.4%	11.5%	5.4%	11.1%	5.6%	11.1%	12.1%	2.4%	8.1%
Not Helpful	1.3%	2.3%	0.0%	0.0%	5.6%	11.1%	9.1%	2.4%	2.8%
Number Responding	78	87	37	36	36	9	33	41	357
H. Developing Ability to Solve Problems									
Extremely Helpful	14.3%	5.7%	18.9%	5.6%	11.1%	11.1%	6.3%	14.6%	10.7%
Very Helpful	54.5%	44.8%	73.0%	44.4%	41.7%	66.7%	34.4%	41.5%	48.7%
Moderately Helpful	23.4%	31.0%	5.4%	38.9%	36.1%	11.1%	46.9%	34.1%	29.3%
Slightly Helpful	7.8%	11.5%	2.7%	11.1%	5.6%	0.0%	9.4%	7.3%	8.2%
Not Helpful	0.0%	6.9%	0.0%	0.0%	5.6%	11.1%	3.1%	2.4%	3.1%
Number Responding	77	87	37	36	36	9	32	41	355
I. Making Informed Decisions as a Citizen									
Extremely Helpful	7.7%	3.5%	8.1%	5.6%	2.8%	0.0%	0.0%	12.2%	5.6%
Very Helpful	29.5%	31.4%	35.1%	30.6%	50.0%	66.7%	12.1%	36.6%	32.9%
Moderately Helpful	46.2%	36.0%	24.3%	38.9%	25.0%	22.2%	51.5%	24.4%	36.0%
Slightly Helpful	16.7%	15.1%	24.3%	16.7%	13.9%	0.0%	21.2%	22.0%	17.4%
Not Helpful	0.0%	14.0%	8.1%	8.3%	8.3%	11.1%	15.2%	4.9%	8.1%
Number Responding	78	86	37	36	36	9	33	41	356
J. Developing Writing Skills									
Extremely Helpful	20.5%	18.6%	13.5%	5.6%	34.3%	55.6%	6.1%	19.5%	18.6%
Very Helpful	44.9%	39.5%	27.0%	27.8%	42.9%	33.3%	36.4%	29.3%	36.9%
Moderately Helpful	26.9%	19.8%	35.1%	47.2%	17.1%	11.1%	30.3%	43.9%	29.0%
Slightly Helpful	6.4%	14.0%	16.2%	16.7%	5.7%	0.0%	9.1%	4.9%	10.1%
Not Helpful	1.3%	8.1%	8.1%	2.8%	0.0%	0.0%	18.2%	2.4%	5.4%
Number Responding	78	86	37	36	35	9	33	41	355
K. Developing Oral Communication Skills									
Extremely Helpful	19.2%	19.5%	8.1%	2.8%	44.4%	33.3%	3.0%	17.1%	17.6%
Very Helpful	55.1%	40.2%	21.6%	33.3%	33.3%	22.2%	15.2%	26.8%	35.9%
Moderately Helpful	15.4%	18.4%	48.6%	55.6%	13.9%	33.3%	45.5%	39.0%	29.4%
Slightly Helpful	9.0%	11.5%	10.8%	5.6%	5.6%	0.0%	21.2%	9.8%	10.1%
Not Helpful	1.3%	10.3%	10.8%	2.8%	2.8%	11.1%	15.2%	7.3%	7.0%
Number Responding	78	87	37	36	36	9	33	41	357
L. Developing Knowledge of Scientific and Technological Developments									
Extremely Helpful	3.9%	8.0%	21.6%	5.6%	11.1%	0.0%	21.2%	2.4%	9.0%
Very Helpful	28.9%	34.5%	48.6%	58.3%	19.4%	22.2%	39.4%	14.6%	33.5%
Moderately Helpful	46.1%	27.6%	21.6%	27.8%	38.9%	44.4%	18.2%	43.9%	33.5%
Slightly Helpful	14.5%	17.2%	8.1%	8.3%	16.7%	22.2%	18.2%	26.8%	16.1%
Not Helpful	6.6%	12.6%	0.0%	0.0%	13.9%	11.1%	3.0%	12.2%	7.9%
Number Responding	76	87	37	36	36	9	33	41	355
16. Undergraduate Education Broadened Interest Beyond Subjects in Major									
Strongly Agree	12.7%	13.8%	8.1%	5.6%	16.7%	33.3%	3.0%	22.0%	12.8%
Agree	58.2%	44.8%	59.5%	58.3%	55.6%	55.6%	42.4%	58.5%	53.4%
Neutral	22.8%	29.9%	21.6%	27.8%	11.1%	11.1%	39.4%	9.8%	23.5%
Disagree	6.3%	11.5%	10.8%	8.3%	16.7%	0.0%	6.1%	9.8%	9.5%
Strongly Disagree	0.0%	0.0%	0.0%	0.0%	0.0%	0.0%	9.1%	0.0%	0.8%
Number Responding	79	87	37	36	36	9	33	41	358

* With the exception of two programs, these schools now comprise the College of Arts and Sciences. Degrees in Human Services and Liberal Studies are included with the Social Sciences.

Southern Illinois University Edwardsville
Survey of 1994 Baccalaureate Graduates -- Five Years Out
Survey Responses -- Part IV
Educational Effectiveness Questions

School Detail, con't.	BUS	EDUC	ENGR	NURS	FA *	HUM*	SCI*	SOC S*	Total
17. Importance of College Education to:									
A. Personal Life									
Very Important	49.4%	49.4%	45.9%	44.4%	63.9%	77.8%	24.2%	51.2%	48.6%
Moderately Important	38.0%	22.4%	43.2%	36.1%	13.9%	22.2%	42.4%	34.1%	31.7%
Slightly Important	10.1%	18.8%	8.1%	16.7%	16.7%	0.0%	21.2%	7.3%	13.8%
Not Important	2.5%	9.4%	2.7%	2.8%	5.6%	0.0%	12.1%	7.3%	5.9%
Number Responding	79	85	37	36	36	9	33	41	356
B. Community Life									
Very Important	15.2%	24.7%	16.2%	19.4%	33.3%	33.3%	15.2%	14.3%	20.2%
Moderately Important	40.5%	38.8%	29.7%	47.2%	30.6%	22.2%	33.3%	42.9%	37.8%
Slightly Important	20.3%	27.1%	43.2%	22.2%	22.2%	33.3%	39.4%	28.6%	27.7%
Not Important	24.1%	9.4%	10.8%	11.1%	13.9%	11.1%	12.1%	14.3%	14.3%
Number Responding	79	85	37	36	36	9	33	42	357
C. Professional Life									
Very Important	57.0%	78.8%	73.0%	75.0%	66.7%	44.4%	54.5%	61.9%	66.7%
Moderately Important	32.9%	15.3%	24.3%	16.7%	13.9%	33.3%	27.3%	19.0%	22.1%
Slightly Important	7.6%	4.7%	2.7%	8.3%	11.1%	0.0%	15.2%	14.3%	8.1%
Not Important	2.5%	1.2%	0.0%	0.0%	8.3%	22.2%	3.0%	4.8%	3.1%
Number Responding	79	85	37	36	36	9	33	42	357
18. Quality of SIUE Education Relative to That of Friends at Other Schools									
Among the Best	10.3%	14.0%	8.3%	2.8%	16.7%	0.0%	3.0%	7.3%	9.6%
Above Average	42.3%	39.5%	41.7%	36.1%	22.2%	55.6%	27.3%	29.3%	36.3%
Average	42.3%	37.2%	50.0%	61.1%	47.2%	33.3%	54.5%	53.7%	46.5%
Below Average	5.1%	8.1%	0.0%	0.0%	11.1%	11.1%	9.1%	7.3%	6.2%
Among the Worst	0.0%	1.2%	0.0%	0.0%	2.8%	0.0%	6.1%	2.4%	1.4%
Number Responding	78	86	36	36	36	9	33	41	355
19. Involvement Since Bachelor's Degree with:									
A. Organized, Formal, Career Related Learning (non-degree)									
Currently Involved	25.6%	44.8%	13.5%	27.3%	45.7%	11.1%	36.4%	17.1%	30.9%
Have Been Involved	47.4%	42.5%	64.9%	63.6%	34.3%	77.8%	48.5%	56.1%	50.1%
Never Involved	26.9%	12.6%	21.6%	9.1%	20.0%	11.1%	15.2%	26.8%	19.0%
Number Responding	78	87	37	33	35	9	33	41	353
B. Personal Enrichment Studies									
Currently Involved	15.4%	27.7%	5.4%	19.4%	41.2%	33.3%	15.2%	10.0%	20.0%
Have Been Involved	38.5%	42.2%	37.8%	58.3%	20.6%	33.3%	27.3%	50.0%	39.7%
Never Involved	46.2%	30.1%	56.8%	22.2%	38.2%	33.3%	57.6%	40.0%	40.3%
Number Responding	78	83	37	36	34	9	33	40	350
C. Professional Activities or Organizations									
Currently Involved	38.0%	46.4%	40.5%	34.3%	41.7%	44.4%	39.4%	41.5%	41.0%
Have Been Involved	31.6%	38.1%	29.7%	45.7%	41.7%	44.4%	39.4%	31.7%	36.4%
Never Involved	30.4%	15.5%	29.7%	20.0%	16.7%	11.1%	21.2%	26.8%	22.6%
Number Responding	79	84	37	35	36	9	33	41	354
D. Volunteer Work / Community Svc Activities or Organizations									
Currently Involved	26.6%	36.5%	16.2%	30.6%	36.1%	11.1%	6.1%	19.0%	26.1%
Have Been Involved	38.0%	43.5%	37.8%	41.7%	38.9%	44.4%	51.5%	45.2%	42.0%
Never Involved	35.4%	20.0%	45.9%	27.8%	25.0%	44.4%	42.4%	35.7%	31.9%
Number Responding	79	85	37	36	36	9	33	42	357

* With the exception of two programs, these schools now comprise the College of Arts and Sciences. Degrees in Human Services and Liberal Studies are included with the Social Sciences.

Southern Illinois University Edwardsville
Survey of 1994 Baccalaureate Graduates -- Five Years Out
Survey Responses -- Part IV
Educational Effectiveness Questions

School Detail, con't.	BUS	EDUC	ENGR	NURS	FA *	HUM*	SCI*	SOC S*	Total
E. Social / Recreational Activities or Organizations									
Currently Involved	32.1%	33.7%	32.4%	20.0%	42.9%	11.1%	18.2%	39.0%	31.4%
Have Been Involved	43.6%	48.8%	35.1%	51.4%	31.4%	55.6%	57.6%	39.0%	44.6%
Never Involved	24.4%	17.4%	32.4%	28.6%	25.7%	33.3%	24.2%	22.0%	24.0%
Number Responding	78	86	37	35	35	9	33	41	354
F. Political Activities or Organizations									
Currently Involved	2.6%	7.2%	0.0%	2.9%	2.9%	0.0%	3.0%	7.5%	4.0%
Have Been Involved	19.2%	21.7%	13.5%	11.4%	14.3%	33.3%	12.1%	35.0%	19.4%
Never Involved	78.2%	71.1%	86.5%	85.7%	82.9%	66.7%	84.8%	57.5%	76.6%
Number Responding	78	83	37	35	35	9	33	40	350
G. Religious / Ethical Activities or Organizations									
Currently Involved	26.9%	41.2%	37.8%	30.6%	31.4%	11.1%	21.2%	19.0%	30.4%
Have Been Involved	39.7%	28.2%	24.3%	30.6%	42.9%	0.0%	27.3%	35.7%	32.1%
Never Involved	33.3%	30.6%	37.8%	38.9%	25.7%	88.9%	51.5%	45.2%	37.5%
Number Responding	78	85	37	36	35	9	33	42	355
H. Support or Participation in the Arts (music, drama, dance, art)									
Currently Involved	11.5%	23.8%	2.7%	13.9%	37.1%	55.6%	9.1%	7.3%	16.7%
Have Been Involved	32.1%	28.6%	21.6%	27.8%	25.7%	44.4%	45.5%	36.6%	31.2%
Never Involved	56.4%	47.6%	75.7%	58.3%	37.1%	0.0%	45.5%	56.1%	52.1%
Number Responding	78	84	37	36	35	9	33	41	353
20. The Three Issues Considered Most Important for SIUE									
A. Finding New Ways to Deliver Education									
Yes, One of the Three Most Important	17.7%	31.0%	18.9%	19.4%	25.0%	33.3%	39.4%	23.8%	25.1%
Number Responding	14	27	7	7	9	3	13	10	90
B. Adding Additional Graduate Programs									
Yes, One of the Three Most Important	10.1%	33.3%	37.8%	30.6%	19.4%	44.4%	30.3%	40.5%	27.9%
Number Responding	8	29	14	11	7	4	10	17	100
C. Enhancing Programs for Personal Enrichment									
Yes, One of the Three Most Important	17.7%	19.5%	5.4%	16.7%	8.3%	0.0%	12.1%	14.3%	14.5%
Number Responding	14	17	2	6	3	0	4	6	52
D. Enhancing Professional Development Opportunities									
Yes, One of the Three Most Important	59.5%	39.1%	40.5%	50.0%	47.2%	55.6%	48.5%	45.2%	47.6%
Number Responding	47	34	15	18	17	5	16	19	171
E. Holding Down the Cost of Tuition and Fees									
Yes, One of the Three Most Important	43.0%	58.6%	56.8%	69.4%	58.3%	55.6%	60.6%	64.3%	56.8%
Number Responding	34	51	21	25	21	5	20	27	204
F. Improving Students' Preparation for Employment									
Yes, One of the Three Most Important	77.2%	54.0%	59.5%	55.6%	75.0%	55.6%	54.5%	66.7%	63.5%
Number Responding	61	47	22	20	27	5	18	28	228
G. More Effectively Meeting the Training Needs of Employers									
Yes, One of the Three Most Important	44.3%	26.4%	56.8%	19.4%	27.8%	22.2%	18.2%	26.2%	32.0%
Number Responding	35	23	21	7	10	2	6	11	115
H. Becoming More Efficient and Cost Effective									
Yes, One of the Three Most Important	11.4%	34.5%	27.0%	33.3%	27.8%	11.1%	24.2%	9.5%	23.4%
Number Responding	9	30	10	12	10	1	8	4	84
I. Strengthening International Studies, Programs & Experiences									
Yes, One of the Three Most Important	15.2%	4.6%	2.7%	5.6%	8.3%	22.2%	12.1%	9.5%	8.9%
Number Responding	12	4	1	2	3	2	4	4	32

* With the exception of two programs, these schools now comprise the College of Arts and Sciences. Degrees in Human Services and Liberal Studies are included with the Social Sciences.