

**Southern Illinois University Edwardsville**  
**Survey of 1997 Baccalaureate Graduates -- One Year Out**

*Comparison of All Graduates to Survey Respondents*

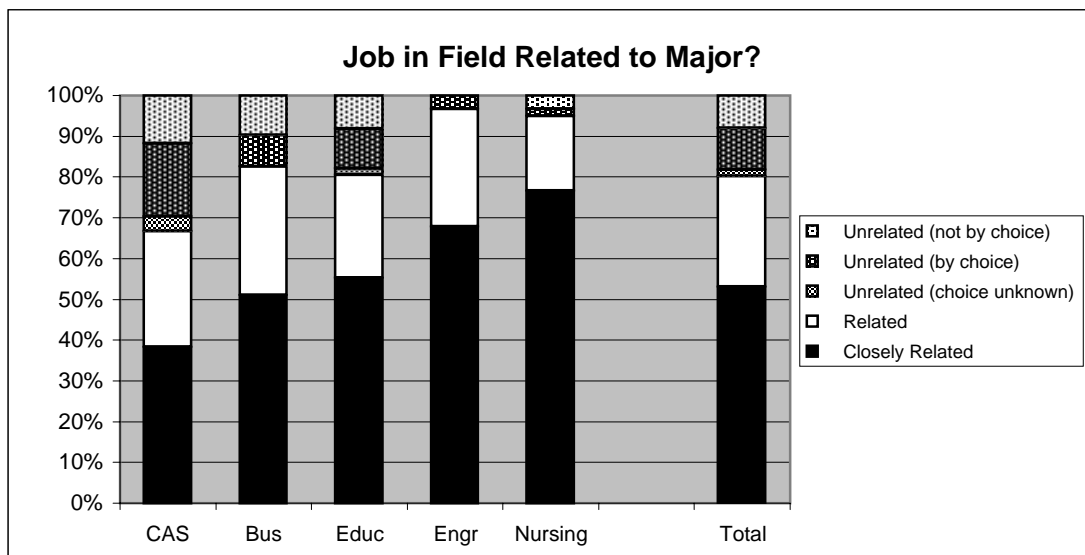
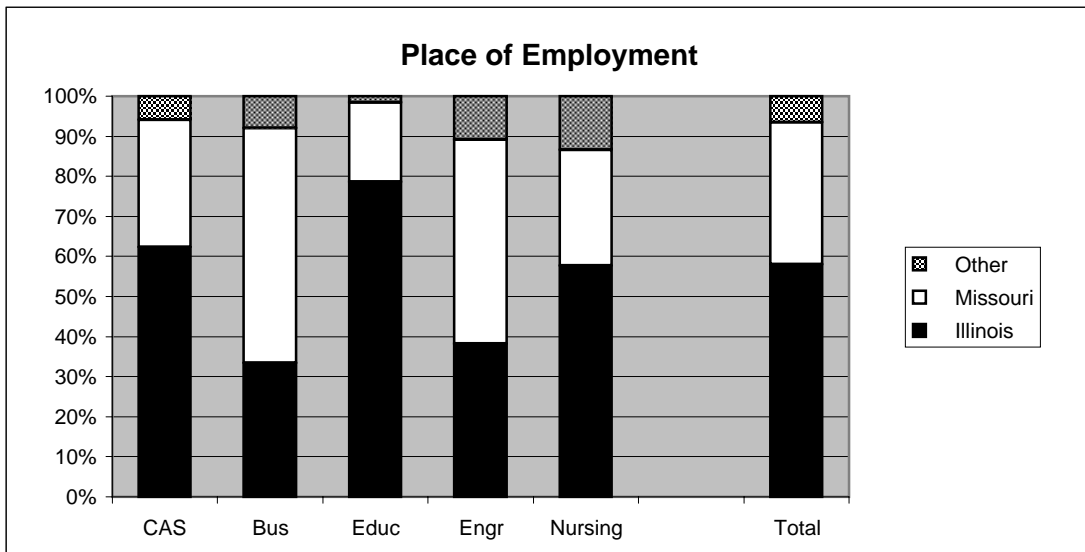
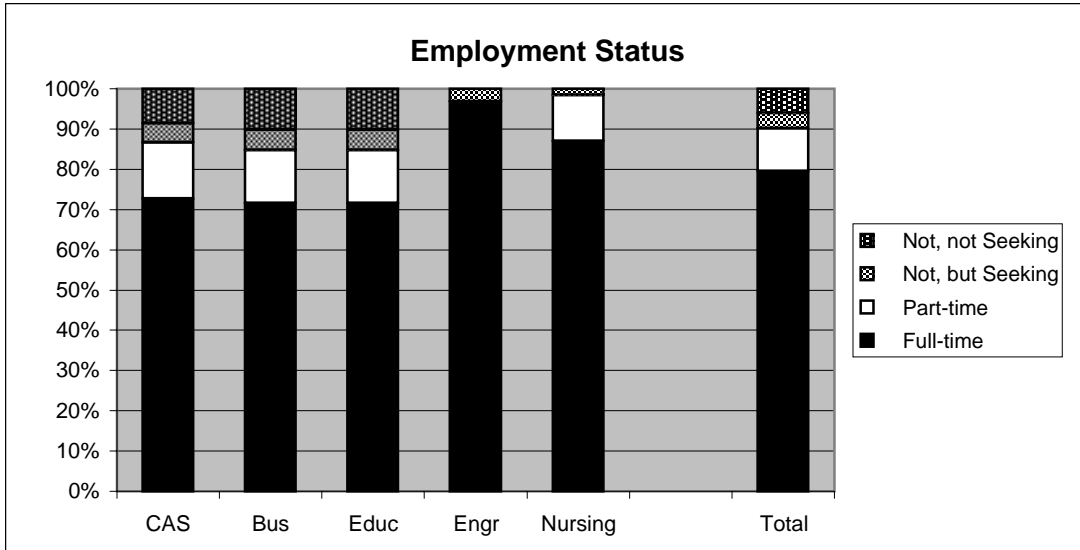
School Detail	All Graduates					
	CAS	Bus	Educ	Engr	Nursing	Total
<b>Total</b>	526	220	377	137	141	1401
Female	58.6%	55.5%	83.0%	13.1%	79.4%	62.3%
Male	41.4%	44.5%	17.0%	86.9%	20.6%	37.7%
Missing Data	0.0%	0.0%	0.0%	0.0%	0.0%	0.0%
White, Non-Hispanic	81.2%	80.0%	90.5%	81.0%	85.8%	83.9%
Black, Non-Hispanic	14.8%	12.7%	6.9%	8.8%	8.5%	11.1%
Asian/Pacific Islander	1.5%	1.8%	0.5%	3.6%	1.4%	1.5%
American Indian/Alaskan Nativ	0.4%	0.0%	0.5%	0.0%	1.4%	0.4%
Hispanic	1.1%	0.5%	1.3%	2.2%	2.8%	1.4%
Non-Resident Alier	1.0%	5.0%	0.3%	4.4%	0.0%	1.6%
Missing Data	0.0%	0.0%	0.0%	0.0%	0.0%	0.0%
Age at Graduation	21 to 56	21 to 55	21 to 60	22 to 46	21 to 49	21 to 60
range						
mediar	23.9	24.7	23.7	25.5	25.5	24.2
Bachelor of Science	65.8%	77.7%	93.6%	97.8%	100.0%	81.7%
Bachelor of Music	3.0%	0.0%	0.0%	0.0%	0.0%	1.1%
Bachelor of Arts	23.4%	0.0%	6.4%	2.2%	0.0%	10.7%
Bachelor of Fine Arts	1.9%	0.0%	0.0%	0.0%	0.0%	0.7%
Bachelor of Sci in Accountanc	0.0%	22.3%	0.0%	0.0%	0.0%	3.5%
Bachelor of Liberal Studie:	5.9%	0.0%	0.0%	0.0%	0.0%	2.2%
Missing Data	0.0%	0.0%	0.0%	0.0%	0.0%	0.0%
Graduated Spring 1997	48.1%	41.8%	49.3%	59.1%	41.1%	47.8%
Graduated Summer 1997	24.1%	19.1%	18.0%	10.9%	2.1%	18.2%
Graduated Fall 1997	27.8%	39.1%	32.6%	29.9%	56.7%	34.0%
Missing Data	0.0%	0.0%	0.0%	0.0%	0.0%	0.0%
Matriculated as a New Freshma	37.3%	35.9%	31.3%	29.9%	25.5%	33.5%
Matriculated as a Transfe	60.3%	62.3%	66.6%	65.7%	73.8%	64.2%
Matriculated as a Non-Degree Studer	2.5%	1.8%	2.1%	4.4%	0.7%	2.3%
Missing Data	0.0%	0.0%	0.0%	0.0%	0.0%	0.0%
Time to Degree for New Freshme						
3 Years or Fewer	1.0%	1.3%	0.0%	0.0%	0.0%	0.6%
4 Years	15.3%	15.2%	15.3%	26.8%	25.0%	17.0%
5 Years	35.2%	27.8%	28.8%	36.6%	38.9%	32.8%
6 Years	16.3%	12.7%	19.5%	12.2%	11.1%	15.7%
7 Years	7.1%	8.9%	11.9%	9.8%	5.6%	8.7%
8 Years	5.6%	5.1%	5.9%	4.9%	0.0%	5.1%
9 Years	2.0%	5.1%	2.5%	4.9%	0.0%	2.8%
10 Years	1.0%	3.8%	2.5%	0.0%	2.8%	1.9%
11 Years or More	16.3%	20.3%	13.6%	4.9%	16.7%	15.3%
Missing Data	0.0%	0.0%	0.0%	0.0%	0.0%	0.0%
Time to Degree for Transfers						
2 or Fewer Years	14.5%	13.9%	13.9%	10.0%	14.4%	13.8%
3 Years	31.5%	29.9%	46.2%	31.1%	35.6%	35.8%
4 Years	23.7%	21.2%	21.9%	22.2%	25.0%	22.8%
5 Years	11.0%	10.9%	6.4%	13.3%	9.6%	9.8%
6 Years	6.6%	7.3%	2.4%	5.6%	7.7%	5.6%
7 Years	4.4%	4.4%	3.2%	4.4%	0.0%	3.6%
8 Years	1.6%	2.2%	1.6%	2.2%	0.0%	1.6%
9 Years	1.3%	1.5%	0.8%	3.3%	1.9%	1.4%
10 Years or More	5.4%	8.8%	3.6%	7.8%	5.8%	5.7%
Missing Data	0.0%	0.0%	0.0%	0.0%	0.0%	0.0%
Graduating GPA (4 point scale)	Mean	Mean	Mean	Mean	Mean	Mean
	3.054	2.921	3.267	2.970	3.144	3.092
	Std Dev	Std Dev	Std Dev	Std Dev	Std Dev	Std Dev
	0.484	0.477	0.425	0.473	0.394	0.473

**Southern Illinois University Edwardsville**  
**Survey of 1997 Baccalaureate Graduates -- One Year Out**

*Comparison of All Graduates to Survey Respondents, con't.*

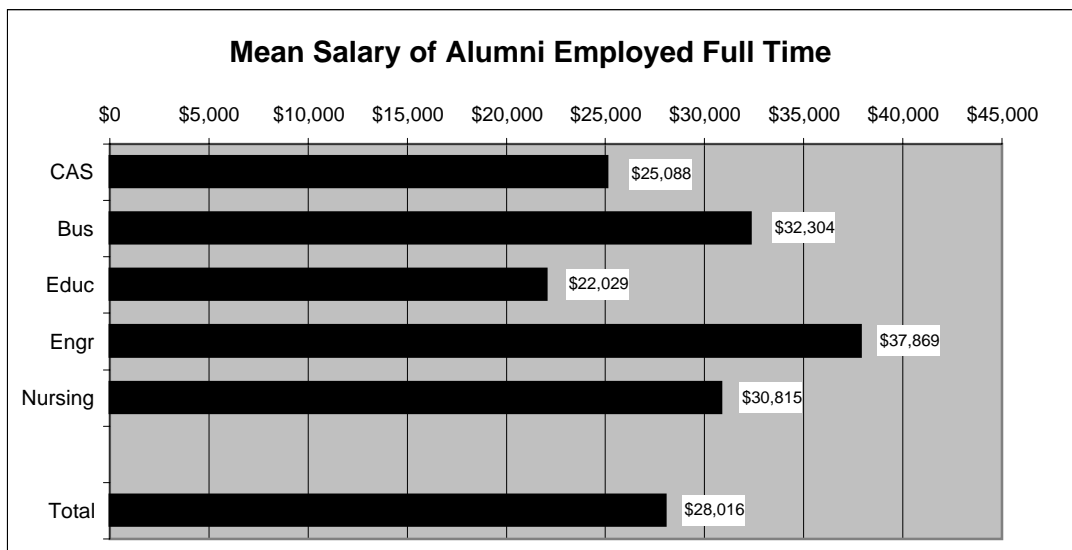
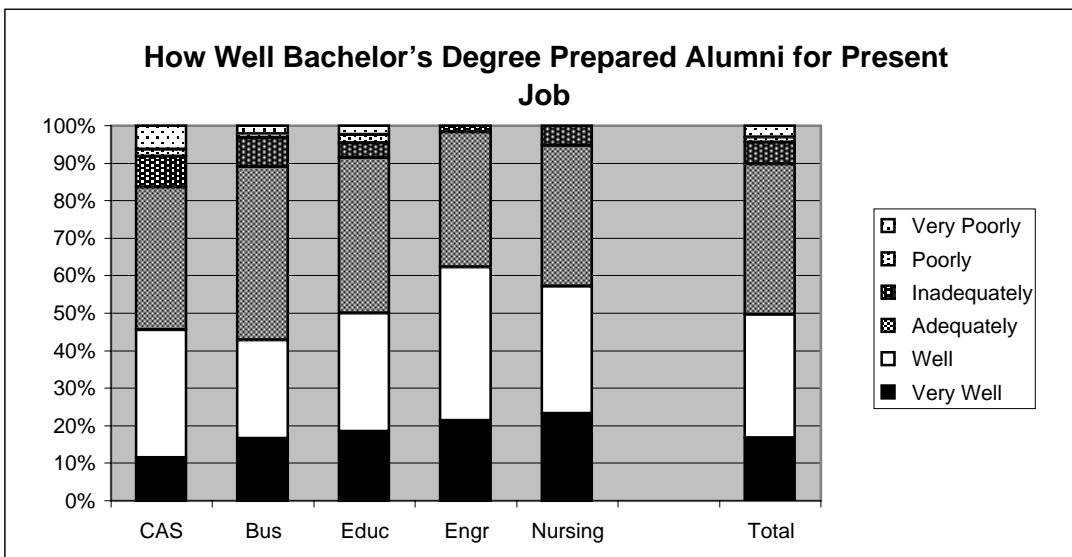
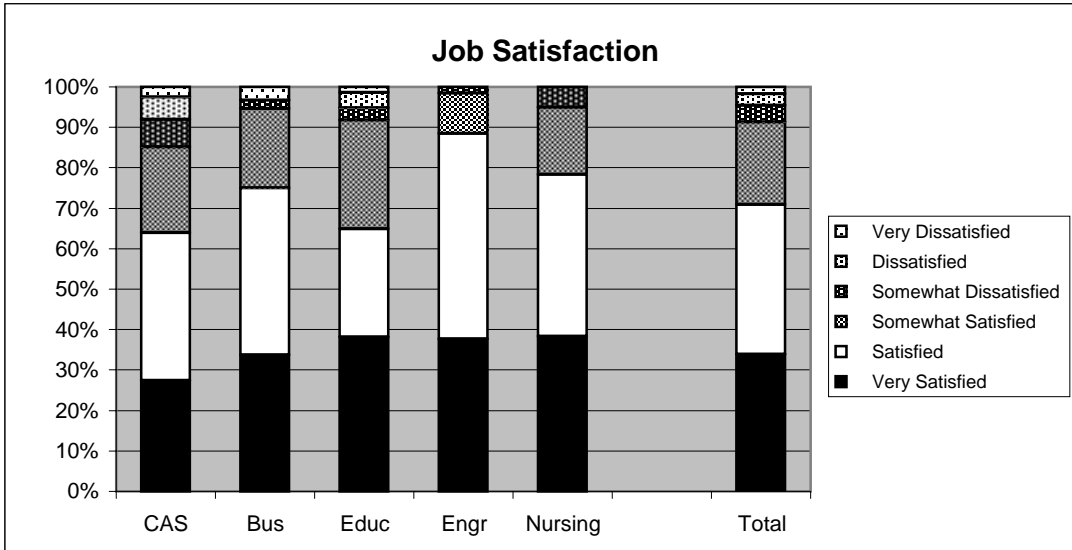
		All One Year Out Survey Respondents					
School Detail		CAS	Bus	Educ	Engr	Nursing	Total
<b>Total</b>		187	96	158	64	61	566
Female		63.6%	66.7%	88.6%	12.5%	82.0%	67.3%
Male		36.4%	33.3%	11.4%	87.5%	18.0%	32.7%
Missing Data		0.0%	0.0%	0.0%	0.0%	0.0%	0.0%
White, Non-Hispanic		88.2%	84.4%	90.5%	89.1%	95.1%	89.0%
Black, Non-Hispanic		9.6%	11.5%	5.7%	4.7%	1.6%	7.4%
Asian/Pacific Islander		1.6%	1.0%	0.6%	4.7%	0.0%	1.4%
American Indian/Alaskan Native		0.0%	0.0%	1.3%	0.0%	1.6%	0.5%
Hispanic		0.5%	0.0%	1.3%	1.6%	1.6%	0.9%
Non-Resident Alier		0.0%	3.1%	0.6%	0.0%	0.0%	0.7%
Missing Data		0.0%	0.0%	0.0%	0.0%	0.0%	0.0%
Age at Graduation		21 to 56	21 to 55	22 to 55	22 to 42	21 to 44	21 to 56
range							
median		24.7	24.0	24.5	24.0	24.5	24.3
Bachelor of Science		68.4%	79.2%	93.7%	100.0%	100.0%	84.3%
Bachelor of Music		2.7%	0.0%	0.0%	0.0%	0.0%	0.9%
Bachelor of Arts		22.5%	0.0%	6.3%	0.0%	0.0%	9.2%
Bachelor of Fine Arts		2.1%	0.0%	0.0%	0.0%	0.0%	0.7%
Bachelor of Sci in Accountancy		0.0%	20.8%	0.0%	0.0%	0.0%	3.5%
Bachelor of Liberal Studies		4.3%	0.0%	0.0%	0.0%	0.0%	1.4%
Missing Data		0.0%	0.0%	0.0%	0.0%	0.0%	0.0%
Graduated Spring 1997		47.6%	37.5%	46.8%	67.2%	44.3%	47.5%
Graduated Summer 1997		24.6%	19.8%	18.4%	6.3%	3.3%	17.7%
Graduated Fall 1997		27.8%	42.7%	34.8%	26.6%	52.5%	34.8%
Missing Data		0.0%	0.0%	0.0%	0.0%	0.0%	0.0%
Matriculated as a New Freshman		35.8%	42.7%	31.6%	35.9%	32.8%	35.5%
Matriculated as a Transfer		62.0%	55.2%	67.7%	59.4%	67.2%	62.7%
Matriculated as a Non-Degree Student		2.1%	2.1%	0.6%	4.7%	0.0%	1.8%
Missing Data		0.0%	0.0%	0.0%	0.0%	0.0%	0.0%
Time to Degree for New Freshman							
3 Years or Fewer		0.0%	2.4%	0.0%	0.0%	0.0%	0.5%
4 Years		19.4%	17.1%	18.0%	39.1%	30.0%	21.9%
5 Years		34.3%	29.3%	26.0%	34.8%	40.0%	31.8%
6 Years		10.4%	19.5%	16.0%	13.0%	10.0%	13.9%
7 Years		4.5%	7.3%	10.0%	8.7%	0.0%	6.5%
8 Years		1.5%	7.3%	4.0%	4.3%	0.0%	3.5%
9 Years		4.5%	2.4%	4.0%	0.0%	0.0%	3.0%
10 Years		1.5%	2.4%	4.0%	0.0%	5.0%	2.5%
11 Years or More		23.9%	12.2%	18.0%	0.0%	15.0%	16.4%
Missing Data		0.0%	0.0%	0.0%	0.0%	0.0%	0.0%
Time to Degree for Transfers							
2 or Fewer Years		14.7%	17.0%	14.0%	7.9%	12.2%	13.8%
3 Years		31.0%	30.2%	43.9%	34.2%	41.5%	36.3%
4 Years		22.4%	22.6%	21.5%	23.7%	29.3%	23.1%
5 Years		10.3%	5.7%	7.5%	15.8%	7.3%	9.0%
6 Years		7.8%	3.8%	3.7%	2.6%	2.4%	4.8%
7 Years		1.7%	5.7%	3.7%	7.9%	0.0%	3.4%
8 Years		2.6%	1.9%	2.8%	0.0%	0.0%	2.0%
9 Years		0.9%	1.9%	0.9%	0.0%	2.4%	1.1%
10 Years or More		8.6%	11.3%	1.9%	7.9%	4.9%	6.5%
Missing Data		0.0%	0.0%	0.0%	0.0%	0.0%	0.0%
Graduating GPA (4 point scale)		Mean	Mean	Mean	Mean	Mean	Mean
		3.175	2.987	3.292	3.047	3.237	3.168
Std Dev		0.481	0.486	0.444	0.501	0.417	0.479

# 1997 Baccalaureate Graduates One Year Out Employment



# 1997 Baccalaureate Graduates One Year Out

## Employment, con't.



**Southern Illinois University Edwardsville**  
**Survey of 1997 Baccalaureate Graduates -- One Year Out**  
**Survey Responses -- Part I**  
*Employment Questions*

<b>School Detail</b>	<b>CAS</b>	<b>Bus</b>	<b>Educ</b>	<b>Engr</b>	<b>Nursing</b>	<b>Total</b>
Number of Survey Respondents	187	96	158	64	61	566
1. Number Employed:						
Full-time	72.7%	71.5%	71.5%	96.9%	86.9%	79.5%
Part-time	13.9%	13.3%	13.3%	0.0%	11.5%	10.6%
Not, but Seeking	4.8%	5.1%	5.1%	3.1%	1.6%	3.9%
Not, not Seeking	8.6%	10.1%	10.1%	0.0%	0.0%	6.0%
Number Responding	187	158	158	64	61	566
<b>The remaining questions in Part I were to be answered only by respondents who were employed full-time or part-time.</b>						
	162	92	134	62	60	510
2. Place of Employment						
Illinois	62.3%	33.3%	78.6%	38.2%	57.7%	58.0%
Missouri	31.8%	58.6%	19.8%	50.9%	28.8%	35.5%
Other	6.0%	8.0%	1.6%	10.9%	13.5%	6.6%
Number Responding	151	87	126	55	52	471
3. Classification of Primary Employer						
Self-Employed or Private Practice	8.0%	3.3%	1.5%	1.6%	1.7%	3.9%
Business (Industrial, Commercial or Service)	33.3%	68.5%	15.7%	43.5%	0.0%	32.4%
Professional Firm (e.g., Engineering, Law)	2.5%	10.9%	0.7%	43.5%	0.0%	8.2%
College or University	12.3%	6.5%	3.7%	0.0%	0.0%	6.1%
Elementary/Secondary School	11.1%	1.1%	53.7%	0.0%	0.0%	17.8%
Health Agency (e.g. Hospital, Clinic)	9.3%	3.3%	11.2%	0.0%	93.3%	17.5%
Federal, State, or Local Government	9.3%	4.3%	3.7%	11.3%	0.0%	6.1%
Armed Services	1.2%	0.0%	0.0%	0.0%	1.7%	0.6%
NonProfit (Non-Government)	12.3%	2.2%	9.7%	0.0%	3.3%	7.3%
Other	0.6%	0.0%	0.0%	0.0%	0.0%	0.2%
Number Responding	162	92	134	62	60	510
4. Job Satisfaction						
Very Satisfied	27.3%	33.7%	38.1%	37.7%	38.3%	33.9%
Satisfied	36.6%	41.3%	26.9%	50.8%	40.0%	37.0%
Somewhat Satisfied	21.1%	19.6%	26.9%	9.8%	16.7%	20.5%
Somewhat Dissatisfied	6.8%	2.2%	3.0%	1.6%	5.0%	4.1%
Dissatisfied	5.6%	0.0%	3.7%	0.0%	0.0%	2.8%
Very Dissatisfied	2.5%	3.3%	1.5%	0.0%	0.0%	1.8%
Number Responding	161	92	134	61	60	508
5. Job in Field?						
Closely Related	38.3%	51.1%	55.2%	67.7%	76.7%	53.1%
Related	28.4%	31.5%	25.4%	29.0%	18.3%	27.1%
Unrelated (choice unknown)	3.7%	0.0%	1.5%	0.0%	0.0%	1.6%
Unrelated (by choice)	17.9%	7.6%	9.7%	3.2%	1.7%	10.2%
Unrelated (not by choice)	11.7%	9.8%	8.2%	0.0%	3.3%	8.0%
Number Responding	162	92	134	62	60	510

**Southern Illinois University Edwardsville**  
**Survey of 1997 Baccalaureate Graduates -- One Year Out**  
**Survey Responses -- Part I**  
*Employment Questions*

<b>School Detail, con't.</b>	<b>CAS</b>	<b>Bus</b>	<b>Educ</b>	<b>Engr</b>	<b>Nursing</b>	<b>Total</b>
<b>6. Timing of Securing First Job After Degree</b>						
Held the Same Job While Enrolled	22.4%	27.2%	11.2%	6.5%	28.3%	19.1%
Secured Job by Graduation	20.5%	28.3%	7.5%	54.8%	26.7%	23.4%
Secured Job After Graduation (timing unknown)	0.0%	0.0%	0.0%	1.6%	0.0%	0.2%
Less than 1 Month After Graduation	7.5%	7.6%	13.4%	9.7%	6.7%	9.2%
1 to 3 Months After Graduation	19.3%	16.3%	27.6%	16.1%	25.0%	21.2%
3 to 6 Months After Graduation	15.5%	12.0%	20.9%	6.5%	10.0%	14.5%
6 to 9 Months After Graduation	9.9%	6.5%	11.9%	0.0%	3.3%	7.9%
More than 9 Months After Graduation	5.0%	2.2%	7.5%	4.8%	0.0%	4.5%
Number Responding	161	92	134	62	60	509
<b>7. Annual Earned Income in Current Job Before Taxes</b>						
Employed Full-Time						
Less Than \$15,000	6.4%	3.9%	10.3%	0.0%	0.0%	5.4%
\$15,000 to 19,999	15.2%	6.6%	21.5%	1.8%	0.0%	11.7%
\$20,000 to \$24,999	33.6%	17.1%	37.4%	0.0%	8.7%	24.1%
\$25,000 to \$29,999	25.6%	18.4%	24.3%	7.1%	34.8%	22.4%
\$30,000 to \$34,999	8.0%	18.4%	3.7%	28.6%	39.1%	15.1%
\$35,000 to \$39,999	4.0%	17.1%	1.9%	25.0%	2.2%	8.5%
\$40,000 or More	7.2%	18.4%	0.9%	37.5%	15.2%	12.7%
Number Responding	125	76	107	56	46	410
Mean Salary	\$25,088	\$32,304	\$22,029	\$37,869	\$30,815	\$28,016
Employed Part-Time						
Less Than \$5,000	4.5%	0.0%	13.3%	NA	0.0%	6.4%
5,000 to \$9,999	40.9%	60.0%	40.0%	NA	20.0%	40.4%
\$10,000 to \$14,999	40.9%	20.0%	6.7%	NA	0.0%	23.4%
\$15,000 to \$19,999	9.1%	20.0%	20.0%	NA	20.0%	14.9%
\$20,000 or More	4.5%	0.0%	20.0%	NA	60.0%	14.9%
Number Responding	22	5	15	0	5	47
Mean Salary	\$10,433	\$9,992	\$12,048	NA	\$11,983	\$11,677
<b>8. Bachelor's Degree Preparation for Job</b>						
Very Well	11.4%	16.5%	18.5%	21.3%	23.2%	16.7%
Well	34.2%	26.4%	31.5%	41.0%	33.9%	32.9%
Adequately	38.0%	46.2%	41.5%	36.1%	37.5%	40.1%
Inadequately	8.2%	7.7%	3.8%	1.6%	5.4%	5.8%
Poorly	1.9%	1.1%	2.3%	0.0%	0.0%	1.4%
Very Poorly	6.3%	2.2%	2.3%	0.0%	0.0%	3.0%
Number Responding	158	91	130	61	56	496

**Southern Illinois University Edwardsville**  
**Survey of 1997 Baccalaureate Graduates -- One Year Out**  
**Survey Responses -- Part I**  
*Employment Questions*

<b>School Detail, con't.</b>	<b>CAS</b>	<b>Bus</b>	<b>Educ</b>	<b>Engr</b>	<b>Nursing</b>	<b>Total</b>
9a. Primary Occupation						
Management	6.2%	18.5%	0.7%	4.9%	3.3%	6.5%
Business & Financial Operations	5.6%	33.7%	4.5%	0.0%	0.0%	9.1%
Computer & Mathematical	3.7%	16.3%	0.0%	29.5%	0.0%	7.7%
Architecture & Engineering	1.2%	0.0%	0.0%	59.0%	0.0%	7.5%
Life, Physical, & Social Science	6.8%	1.1%	0.0%	0.0%	0.0%	2.4%
Health	3.1%	1.1%	6.7%	0.0%	95.0%	14.2%
Community & Social Service	16.1%	0.0%	10.4%	0.0%	0.0%	7.9%
Legal	0.6%	0.0%	0.0%	0.0%	1.7%	0.4%
Education, Training, & Library	18.0%	3.3%	61.2%	0.0%	0.0%	22.4%
Arts, Design, Entertainment, Media & Sports	9.9%	1.1%	0.7%	0.0%	0.0%	3.5%
Sales	9.9%	12.0%	2.2%	0.0%	0.0%	5.9%
Office & Administration	9.3%	12.0%	4.5%	0.0%	0.0%	6.3%
Protective Services	1.2%	0.0%	0.7%	0.0%	0.0%	0.6%
Food Preparation & Serving	0.6%	0.0%	1.5%	0.0%	0.0%	0.6%
Buildings & Grounds Maintenance	0.0%	0.0%	0.0%	0.0%	0.0%	0.0%
Personal Care and Service	0.0%	0.0%	4.5%	0.0%	0.0%	1.2%
Farming, Fishing, and Forestry	0.0%	0.0%	0.0%	0.0%	0.0%	0.0%
Construction & Extractive	0.6%	0.0%	0.7%	3.3%	0.0%	0.8%
Installation, Maintenance, & Repair	1.2%	0.0%	0.7%	0.0%	0.0%	0.6%
Production	3.1%	1.1%	0.7%	3.3%	0.0%	1.8%
Transportation and Material Moving	1.2%	0.0%	0.0%	0.0%	0.0%	0.4%
Military	1.2%	0.0%	0.0%	0.0%	0.0%	0.4%
Number Responding	161	92	134	61	60	508
9b. Industry						
Agriculture, Forestry, and Fishing	0.0%	1.1%	0.0%	0.0%	0.0%	0.2%
Mining	0.0%	0.0%	0.8%	0.0%	0.0%	0.2%
Utilities	1.9%	0.0%	0.0%	1.7%	0.0%	0.8%
Construction	0.6%	0.0%	0.0%	13.8%	0.0%	1.8%
Manufacturing	5.8%	18.2%	1.5%	15.5%	0.0%	7.3%
Wholesale Trade	0.0%	0.0%	0.0%	0.0%	0.0%	0.0%
Retail Trade	7.1%	9.1%	1.5%	0.0%	0.0%	4.3%
Transportation	2.6%	3.4%	1.5%	10.3%	0.0%	3.0%
Information	3.2%	5.7%	0.0%	8.6%	0.0%	3.0%
Finance & Insurance	4.5%	19.3%	3.0%	5.2%	0.0%	6.3%
Real Estate & Rental & Leasing	3.2%	2.3%	0.0%	0.0%	0.0%	1.4%
Professional, Scientific & Technical Services	11.0%	11.4%	3.0%	43.1%	1.7%	11.6%
Management of Companies & Enterprises	0.6%	2.3%	0.8%	0.0%	1.7%	1.0%
Admin & Suppt, Waste Mgmt & Remedtn Svcs	1.9%	3.4%	0.0%	0.0%	0.0%	1.2%
Educational Services	21.4%	6.8%	63.9%	0.0%	0.0%	25.2%
Health Care & Social Assistance	18.8%	4.5%	17.3%	0.0%	95.0%	22.9%
Arts, Entertainment & Recreation	8.4%	3.4%	0.8%	0.0%	0.0%	3.4%
Accommodations & Food Services	0.6%	1.1%	1.5%	1.7%	0.0%	1.0%
Other Services (except Public Admin)	5.8%	6.8%	3.0%	0.0%	1.7%	4.1%
Public Administration	1.9%	1.1%	1.5%	0.0%	0.0%	1.2%
Number Responding	154	88	133	58	60	493

**Southern Illinois University Edwardsville**  
**Survey of 1997 Baccalaureate Graduates -- One Year Out**  
**Survey Responses -- Part II**  
*Education Questions*

<b>School Detail</b>	<b>CAS</b>	<b>Bus</b>	<b>Educ</b>	<b>Engr</b>	<b>Nursing</b>	<b>Total</b>
Number of Survey Respondents	122	148	148	52	39	555
10. Enrolled in College or University Since Degree?						
Yes, Full Time	25.1%	6.3%	17.7%	4.7%	1.6%	15.0%
Yes, Part Time	13.4%	14.6%	19.0%	17.2%	6.6%	14.8%
No	61.5%	79.2%	63.3%	78.1%	91.8%	70.1%
Number Responding	187	96	158	64	61	566
<b>The remaining questions in Part II were to be answered only by respondents who had enrolled in a college or university since receiving their degree.</b>						
	72	20	58	14	5	169
11. Pursuing or Completed Another Degree?						
Associate's	0.0%	0.0%	0.0%	0.0%	0.0%	0.0%
Second Bachelor's	1.6%	11.8%	4.0%	0.0%	0.0%	3.4%
Academic Master's (MA, MS, MEd, etc)	50.8%	29.4%	76.0%	75.0%	25.0%	58.2%
Prof. Master's or Ed Specialist	39.7%	52.9%	16.0%	25.0%	50.0%	32.2%
Medicine (MD, OD)	1.6%	0.0%	0.0%	0.0%	0.0%	0.7%
Health Prof. (dentistry, pharmacy, etc.)	0.0%	0.0%	2.0%	0.0%	25.0%	1.4%
Theology/Divinity	1.6%	0.0%	0.0%	0.0%	0.0%	0.7%
Law (LLB, JD)	1.6%	5.9%	0.0%	0.0%	0.0%	1.4%
Doctorate (PhD, EdD, DA, DBA, etc.)	1.6%	0.0%	0.0%	0.0%	0.0%	0.7%
Other	1.6%	0.0%	2.0%	0.0%	0.0%	1.4%
Number Responding	63	17	50	12	4	146
12. How Well Bach. Degree Prepared You for Additional Degree						
Very Well	31.1%	25.0%	23.5%	41.7%	25.0%	28.5%
Well	34.4%	43.8%	43.1%	33.3%	50.0%	38.9%
Adequately	34.4%	25.0%	29.4%	25.0%	25.0%	30.6%
Inadequately	0.0%	0.0%	2.0%	0.0%	0.0%	0.7%
Poorly	0.0%	0.0%	2.0%	0.0%	0.0%	0.7%
Very Poorly	0.0%	6.3%	0.0%	0.0%	0.0%	0.7%
Number Responding	61	16	51	12	4	144



**Southern Illinois University Edwardsville**  
**Survey of 1997 Baccalaureate Graduates -- One Year Out**  
**Survey Responses -- Part III**  
*Satisfaction Questions*

<b>School Detail</b>	<b>CAS</b>	<b>Bus</b>	<b>Educ</b>	<b>Engr</b>	<b>Nursing</b>	<b>Total</b>
Number of Survey Respondents	187	96	158	64	61	566
13. Present Attitude Towards the University						
Strongly Positive	17.1%	21.9%	14.7%	18.8%	10.0%	16.7%
Positive	45.3%	46.9%	48.1%	48.4%	56.7%	47.9%
Somewhat Positive	29.3%	21.9%	22.4%	18.8%	20.0%	23.9%
Somewhat Negative	7.2%	6.3%	9.6%	9.4%	11.7%	8.4%
Negative	1.1%	3.1%	3.8%	3.1%	1.7%	2.5%
Strongly Negative	0.0%	0.0%	1.3%	1.6%	0.0%	0.5%
Number Responding	181	96	156	64	60	557
14. Present Attitude Towards your Bachelor's Degree Major						
Strongly Positive	22.3%	30.2%	31.8%	51.6%	35.0%	31.1%
Positive	48.0%	50.0%	42.0%	37.5%	43.3%	45.0%
Somewhat Positive	21.2%	17.7%	14.0%	7.8%	18.3%	16.7%
Somewhat Negative	7.3%	1.0%	8.3%	1.6%	1.7%	5.2%
Negative	1.1%	1.0%	3.2%	1.6%	1.7%	1.8%
Strongly Negative	0.0%	0.0%	0.6%	0.0%	0.0%	0.2%
Number Responding	179	96	157	64	60	556

**Southern Illinois University Edwardsville**  
**Survey of 1997 Baccalaureate Graduates -- One Year Out**  
**Survey Responses -- Part IV**  
*Educational Practices Questions*

<b>School Detail</b>	<b>CAS</b>	<b>Bus</b>	<b>Educ</b>	<b>Engr</b>	<b>Nursing</b>	<b>Total</b>
Number of Survey Respondents	187	96	158	64	61	566
<b>15. Faculty in Major Were Accessible Outside of Class</b>						
Very Often	31.6%	27.4%	24.1%	45.3%	19.7%	29.0%
Often	44.9%	57.9%	47.5%	39.1%	47.5%	47.4%
Sometimes	20.3%	10.5%	22.2%	14.1%	31.1%	19.6%
Infrequently	3.2%	4.2%	5.7%	1.6%	1.6%	3.7%
Never	0.0%	0.0%	0.6%	0.0%	0.0%	0.2%
Number Responding	187	95	158	64	61	565
<b>16. In Major, Student was Expected to Work Cooperatively with Other Students</b>						
Very Often	31.0%	67.7%	32.9%	37.5%	57.4%	41.3%
Often	34.8%	27.1%	44.3%	39.1%	34.4%	36.6%
Sometimes	23.0%	5.2%	19.0%	20.3%	8.2%	17.0%
Infrequently	9.6%	0.0%	3.8%	3.1%	0.0%	4.6%
Never	1.6%	0.0%	0.0%	0.0%	0.0%	0.5%
Number Responding	187	96	158	64	61	566
<b>17. In Major, Faculty Encouraged Student to Challenge Ideas (student's, other students, and in readings &amp; materials)</b>						
Very Often	20.3%	19.8%	19.0%	20.3%	14.8%	19.3%
Often	43.3%	31.3%	38.6%	34.4%	37.7%	38.3%
Sometimes	25.7%	37.5%	32.9%	31.3%	41.0%	32.0%
Infrequently	10.7%	9.4%	5.7%	12.5%	4.9%	8.7%
Never	0.0%	2.1%	3.8%	1.6%	1.6%	1.8%
Number Responding	187	96	158	64	61	566
<b>18. In Major, Faculty Used Appropriate Teaching Activities to Help Student Learn</b>						
Very Often	22.5%	28.1%	24.7%	26.6%	13.1%	23.5%
Often	54.0%	47.9%	48.1%	40.6%	55.7%	50.0%
Sometimes	20.3%	22.9%	23.4%	28.1%	27.9%	23.3%
Infrequently	3.2%	1.0%	3.2%	4.7%	3.3%	3.0%
Never	0.0%	0.0%	0.6%	0.0%	0.0%	0.2%
Number Responding	187	96	158	64	61	566
<b>19. In Major, Faculty had High Expectations for Quality Of Student Work</b>						
Very Often	31.0%	35.4%	39.2%	28.1%	32.8%	33.9%
Often	43.9%	47.9%	45.6%	50.0%	50.8%	46.5%
Sometimes	23.0%	14.6%	12.0%	18.8%	14.8%	17.1%
Infrequently	2.1%	2.1%	2.5%	3.1%	1.6%	2.3%
Never	0.0%	0.0%	0.6%	0.0%	0.0%	0.2%
Number Responding	187	96	158	64	61	566
<b>20. In Major, Faculty Provided Timely Feedback</b>						
Very Often	28.0%	20.8%	25.9%	25.0%	19.7%	25.0%
Often	48.9%	61.5%	56.3%	51.6%	52.5%	53.8%
Sometimes	17.2%	15.6%	14.6%	18.8%	24.6%	17.2%
Infrequently	5.9%	2.1%	1.9%	4.7%	3.3%	3.7%
Never	0.0%	0.0%	1.3%	0.0%	0.0%	0.4%
Number Responding	186	96	158	64	61	565
<b>21. In Major, Faculty Encouraged Students' Questions and Discussion in Class</b>						
Very Often	38.2%	44.8%	41.8%	39.1%	31.1%	39.6%
Often	43.5%	43.8%	45.6%	51.6%	50.8%	45.8%
Sometimes	17.7%	10.4%	10.8%	7.8%	16.4%	13.3%
Infrequently	0.5%	1.0%	1.3%	1.6%	1.6%	1.1%
Never	0.0%	0.0%	0.6%	0.0%	0.0%	0.2%
Number Responding	186	96	158	64	61	565

**Southern Illinois University Edwardsville**  
**Survey of 1997 Baccalaureate Graduates -- One Year Out**  
**Survey Responses -- Part IV**  
*Educational Practices Questions*

<b>School Detail, cont'd</b>	<b>CAS</b>	<b>Bus</b>	<b>Educ</b>	<b>Engr</b>	<b>Nursing</b>	<b>Total</b>
22. In Major, Student Spent Necessary Time and Energy to Come to Class Prepared						
Very Often	43.0%	41.7%	46.5%	32.8%	39.3%	42.2%
Often	44.1%	46.9%	45.2%	50.0%	49.2%	46.1%
Sometimes	10.2%	10.4%	7.0%	17.2%	11.5%	10.3%
Infrequently	2.7%	1.0%	1.3%	0.0%	0.0%	1.4%
Never	0.0%	0.0%	0.0%	0.0%	0.0%	0.0%
Number Responding	186	96	157	64	61	564

4/6/99

**Southern Illinois University Edwardsville**  
**Survey of 1997 Baccalaureate Graduates -- One Year Out**  
**Survey Responses -- Part V**  
*Advisement Questions*

<b>School Detail</b>	<b>CAS</b>	<b>Bus</b>	<b>Educ</b>	<b>Engr</b>	<b>Nursing</b>	<b>Total</b>
Number of Survey Respondents	187	96	158	64	61	566
23. Advisors in Major Effective on Future Course Offerings						
Strongly Agree	23.7%	31.3%	18.5%	34.4%	45.9%	27.1%
Agree	37.6%	32.3%	35.7%	37.5%	41.0%	36.5%
Neutral	16.7%	18.8%	18.5%	14.1%	8.2%	16.3%
Disagree	12.9%	8.3%	19.7%	10.9%	3.3%	12.8%
Strongly Disagree	7.0%	7.3%	5.7%	0.0%	1.6%	5.3%
Did Not Discuss	2.2%	2.1%	1.9%	3.1%	0.0%	2.0%
Number Responding	186	96	157	64	61	564
24. Advisors in Major Effective on Career Planning						
Strongly Agree	16.1%	10.4%	9.6%	15.6%	23.0%	14.0%
Agree	23.7%	26.0%	27.6%	29.7%	31.1%	26.6%
Neutral	25.8%	22.9%	22.4%	26.6%	19.7%	23.8%
Disagree	20.4%	19.8%	21.8%	15.6%	14.8%	19.5%
Strongly Disagree	9.1%	11.5%	10.9%	3.1%	3.3%	8.7%
Did Not Discuss	4.8%	9.4%	7.7%	9.4%	8.2%	7.3%
Number Responding	186	96	156	64	61	563
25. Advisors in Major Effective on Degree Requirements						
Strongly Agree	31.2%	34.4%	28.2%	42.2%	57.4%	35.0%
Agree	33.3%	46.9%	38.5%	32.8%	34.4%	37.1%
Neutral	15.6%	10.4%	12.8%	18.8%	4.9%	13.1%
Disagree	11.3%	4.2%	12.2%	6.3%	1.6%	8.7%
Strongly Disagree	8.1%	4.2%	7.7%	0.0%	1.6%	5.7%
Did Not Discuss	0.5%	0.0%	0.6%	0.0%	0.0%	0.4%
Number Responding	186	96	156	64	61	563
26. Advisors in Major Effective on Grad/Prof School Entry Requirement:						
Strongly Agree	10.2%	7.3%	7.1%	10.9%	18.0%	9.8%
Agree	17.7%	15.6%	17.9%	18.8%	24.6%	18.3%
Neutral	19.9%	19.8%	15.4%	26.6%	21.3%	19.5%
Disagree	14.0%	13.5%	15.4%	15.6%	9.8%	14.0%
Strongly Disagree	10.2%	10.4%	17.9%	1.6%	3.3%	10.7%
Did Not Discuss	28.0%	33.3%	26.3%	26.6%	23.0%	27.7%
Number Responding	186	96	156	64	61	563
27. Advisors in Major Usually Available When Needed						
Strongly Agree	29.6%	17.7%	10.9%	40.6%	34.4%	24.2%
Agree	36.6%	43.8%	28.2%	35.9%	45.9%	36.4%
Neutral	20.4%	17.7%	33.3%	18.8%	14.8%	22.7%
Disagree	9.1%	9.4%	17.3%	1.6%	4.9%	10.1%
Strongly Disagree	4.3%	11.5%	10.3%	3.1%	0.0%	6.6%
Number Responding	186	96	156	64	61	563

**Southern Illinois University Edwardsville**  
**Survey of 1997 Baccalaureate Graduates -- One Year Out**  
**Survey Responses -- Part VI**  
*Program Quality Questions*

<b>School Detail</b>	<b>CAS</b>	<b>Bus</b>	<b>Educ</b>	<b>Engr</b>	<b>Nursing</b>	<b>Total</b>
Number of Survey Respondents	122	148	148	52	39	555
28A. Quality of Major in Offering						
Sufficient Courses						
Excellent	28.0%	27.1%	27.2%	25.0%	29.5%	27.4%
Good	48.9%	54.2%	50.0%	46.9%	60.7%	51.2%
Fair	17.7%	16.7%	16.5%	23.4%	9.8%	17.0%
Poor	5.4%	2.1%	6.3%	4.7%	0.0%	4.4%
Number Responding	186	96	158	64	61	565
28B. Quality of Major in Offering						
Convenient Class Times						
Excellent	19.9%	19.8%	21.7%	12.5%	21.7%	19.7%
Good	43.0%	47.9%	45.2%	53.1%	58.3%	47.2%
Fair	25.8%	28.1%	26.1%	26.6%	18.3%	25.6%
Poor	11.3%	4.2%	7.0%	7.8%	1.7%	7.5%
Number Responding	186	96	157	64	60	563
28C. Quality of Major in Offering						
Logical Class Sequences						
Excellent	19.9%	18.8%	25.3%	26.6%	18.0%	21.8%
Good	51.1%	60.4%	49.4%	59.4%	67.2%	54.9%
Fair	23.1%	15.6%	18.4%	10.9%	9.8%	17.7%
Poor	5.9%	5.2%	7.0%	3.1%	4.9%	5.7%
Number Responding	186	96	158	64	61	565
29. Quality of Faculty in Major						
Excellent	42.9%	42.6%	35.9%	40.6%	24.6%	38.6%
Good	38.6%	45.7%	48.7%	42.2%	54.1%	44.7%
Fair	16.8%	11.7%	12.8%	15.6%	18.0%	14.8%
Poor	1.6%	0.0%	2.6%	1.6%	3.3%	1.8%
Number Responding	184	94	156	64	61	559
30. Grading Standards in Major Were:						
Too High	3.2%	6.3%	2.5%	3.2%	3.3%	3.6%
About Right	83.8%	86.5%	91.1%	85.7%	93.4%	87.5%
Too Low	13.0%	7.3%	6.4%	11.1%	3.3%	8.9%
Number Responding	185	96	157	63	61	562

**Southern Illinois University at Edwardsville**  
**Survey of 1997 Baccalaureate Graduates--One Year Out**  
**Survey Responses -- Part VII**  
*Undergraduate Experience Questions*

<b>School Detail</b>	<b>CAS</b>	<b>Bus</b>	<b>Educ</b>	<b>Engr</b>	<b>Nursing</b>	<b>Total</b>
Number of Survey Respondents	187	96	158	64	61	566
<b>31A. Undergrad Education Helped Develop Reasoning Skills</b>						
Strongly Agree	28.5%	20.8%	18.6%	33.3%	11.5%	23.1%
Agree	50.0%	60.4%	55.8%	52.4%	62.3%	55.0%
Neutral	17.2%	15.6%	19.9%	11.1%	21.3%	17.4%
Disagree	3.2%	3.1%	4.5%	1.6%	4.9%	3.6%
Strongly Disagree	1.1%	0.0%	1.3%	1.6%	0.0%	0.9%
Number Responding	186	96	156	63	61	562
<b>31B. Undergrad Education Helped Develop Capacity to View Problems from Different Perspectives</b>						
Strongly Agree	37.4%	27.1%	26.9%	25.4%	21.3%	29.7%
Agree	48.1%	58.3%	53.8%	57.1%	54.1%	53.1%
Neutral	11.2%	12.5%	14.7%	11.1%	21.3%	13.5%
Disagree	2.1%	2.1%	3.8%	4.8%	3.3%	3.0%
Strongly Disagree	1.1%	0.0%	0.6%	1.6%	0.0%	0.7%
Number Responding	187	96	156	63	61	563
<b>31C. Undergrad Education Helped Develop Ability to Solve Problems</b>						
Strongly Agree	28.3%	20.8%	20.5%	46.9%	21.3%	26.2%
Agree	46.0%	62.5%	53.8%	43.8%	55.7%	51.8%
Neutral	21.9%	12.5%	19.9%	7.8%	18.0%	17.7%
Disagree	2.7%	4.2%	5.1%	1.6%	4.9%	3.7%
Strongly Disagree	1.1%	0.0%	0.6%	0.0%	0.0%	0.5%
Number Responding	187	96	156	64	61	564
<b>31D. Undergrad Education Helped Develop Ability to Make Informed Decisions as a Citizen</b>						
Strongly Agree	23.5%	13.5%	16.0%	20.3%	13.1%	18.3%
Agree	40.6%	50.0%	49.4%	43.8%	37.7%	44.7%
Neutral	29.4%	27.1%	24.4%	21.9%	36.1%	27.5%
Disagree	4.3%	8.3%	8.3%	12.5%	13.1%	8.0%
Strongly Disagree	2.1%	1.0%	1.9%	1.6%	0.0%	1.6%
Number Responding	187	96	156	64	61	564
<b>31E. Undergrad Education Helped Develop Writing Skills</b>						
Strongly Agree	34.2%	28.1%	28.2%	20.3%	18.0%	28.2%
Agree	42.8%	51.0%	44.9%	40.6%	39.3%	44.1%
Neutral	17.1%	14.6%	19.2%	23.4%	29.5%	19.3%
Disagree	4.8%	5.2%	6.4%	7.8%	11.5%	6.4%
Strongly Disagree	1.1%	1.0%	1.3%	7.8%	1.6%	2.0%
Number Responding	187	96	156	64	61	564
<b>31F. Undergrad Education Helped Develop Oral Communication Skills</b>						
Strongly Agree	31.6%	33.7%	30.3%	18.8%	19.7%	28.8%
Agree	44.4%	50.5%	46.5%	48.4%	50.8%	47.2%
Neutral	17.1%	11.6%	16.1%	18.8%	21.3%	16.5%
Disagree	4.8%	4.2%	5.8%	9.4%	8.2%	5.9%
Strongly Disagree	2.1%	0.0%	1.3%	4.7%	0.0%	1.6%
Number Responding	187	95	155	64	61	562
<b>31G. Undergrad Education Helped Develop Knowledge of Scientific and Technological Developments</b>						
Strongly Agree	16.0%	17.7%	16.0%	43.8%	23.0%	20.2%
Agree	41.7%	40.6%	43.6%	46.9%	50.8%	43.6%
Neutral	29.9%	33.3%	30.1%	6.3%	23.0%	27.1%
Disagree	10.2%	7.3%	7.7%	3.1%	3.3%	7.4%
Strongly Disagree	2.1%	1.0%	2.6%	0.0%	0.0%	1.6%
Number Responding	187	96	156	64	61	564

**Southern Illinois University at Edwardsville**  
**Survey of 1997 Baccalaureate Graduates--One Year Out**  
**Survey Responses -- Part VII**  
*Undergraduate Experience Questions*

<b>School Detail, con't.</b>	<b>CAS</b>	<b>Bus</b>	<b>Educ</b>	<b>Engr</b>	<b>Nursing</b>	<b>Total</b>
31H. Undergrad Education Helped Develop Appreciation of Cultures						
Strongly Agree	28.9%	17.7%	28.2%	10.9%	24.6%	24.3%
Agree	40.6%	43.8%	39.1%	29.7%	47.5%	40.2%
Neutral	21.9%	30.2%	20.5%	46.9%	24.6%	26.1%
Disagree	5.3%	7.3%	9.0%	9.4%	3.3%	6.9%
Strongly Disagree	3.2%	1.0%	3.2%	3.1%	0.0%	2.5%
Number Responding	187	96	156	64	61	564
31I. Undergrad Education Helped Develop Sense of Ethics						
Strongly Agree	23.0%	17.7%	21.2%	23.4%	18.0%	21.1%
Agree	39.6%	54.2%	44.9%	40.6%	57.4%	45.6%
Neutral	28.9%	18.8%	23.1%	23.4%	19.7%	23.9%
Disagree	4.8%	8.3%	9.0%	9.4%	3.3%	6.9%
Strongly Disagree	3.7%	1.0%	1.9%	3.1%	1.6%	2.5%
Number Responding	187	96	156	64	61	564
32. Undergrad Education Broadened Interest in Beyond Subjects in Major						
Strongly Agree	23.5%	15.6%	18.5%	10.9%	9.8%	17.9%
Agree	51.3%	61.5%	55.4%	51.6%	49.2%	54.0%
Neutral	16.6%	16.7%	15.9%	23.4%	24.6%	18.1%
Disagree	6.4%	6.3%	8.9%	10.9%	13.1%	8.3%
Strongly Disagree	2.1%	0.0%	1.3%	3.1%	3.3%	1.8%
Number Responding	187	96	157	64	61	565
33A. Importance of College Education to Personal Life:						
Very Important	67.7%	55.2%	69.0%	40.6%	54.1%	61.4%
Moderately Important	22.6%	29.2%	20.9%	34.4%	34.4%	25.8%
Slightly Important	4.8%	7.3%	7.6%	15.6%	9.8%	7.8%
Not Important	4.8%	8.3%	2.5%	9.4%	1.6%	5.0%
Number Responding	186	96	158	64	61	565
33B. Importance of College Education to Community Life:						
Very Important	34.9%	28.4%	48.1%	21.9%	21.3%	34.6%
Moderately Important	39.2%	37.9%	31.6%	25.0%	50.8%	36.5%
Slightly Important	15.1%	14.7%	12.7%	28.1%	16.4%	16.0%
Not Important	10.8%	18.9%	7.6%	25.0%	11.5%	12.9%
Number Responding	186	95	158	64	61	564
33C. Importance of College Education to Professional Life:						
Very Important	64.9%	70.5%	75.3%	82.8%	77.0%	72.1%
Moderately Important	20.0%	20.0%	15.8%	12.5%	14.8%	17.4%
Slightly Important	8.6%	6.3%	7.0%	4.7%	6.6%	7.1%
Not Important	6.5%	3.2%	1.9%	0.0%	1.6%	3.4%
Number Responding	185	95	158	64	61	563
34. Quality of SIUE Education Relative to That of Friends at Other Schools						
Among the Best	11.4%	12.5%	7.0%	22.2%	8.2%	11.2%
Above Average	33.0%	34.4%	37.3%	39.7%	32.8%	35.2%
Average	48.1%	47.9%	44.3%	36.5%	55.7%	46.5%
Below Average	7.6%	5.2%	9.5%	1.6%	3.3%	6.6%
Among the Worst	0.0%	0.0%	1.9%	0.0%	0.0%	0.5%
Number Responding	185	96	158	63	61	563