

# Improving Access to Pharmacy Services for Individuals with Transportation Challenges

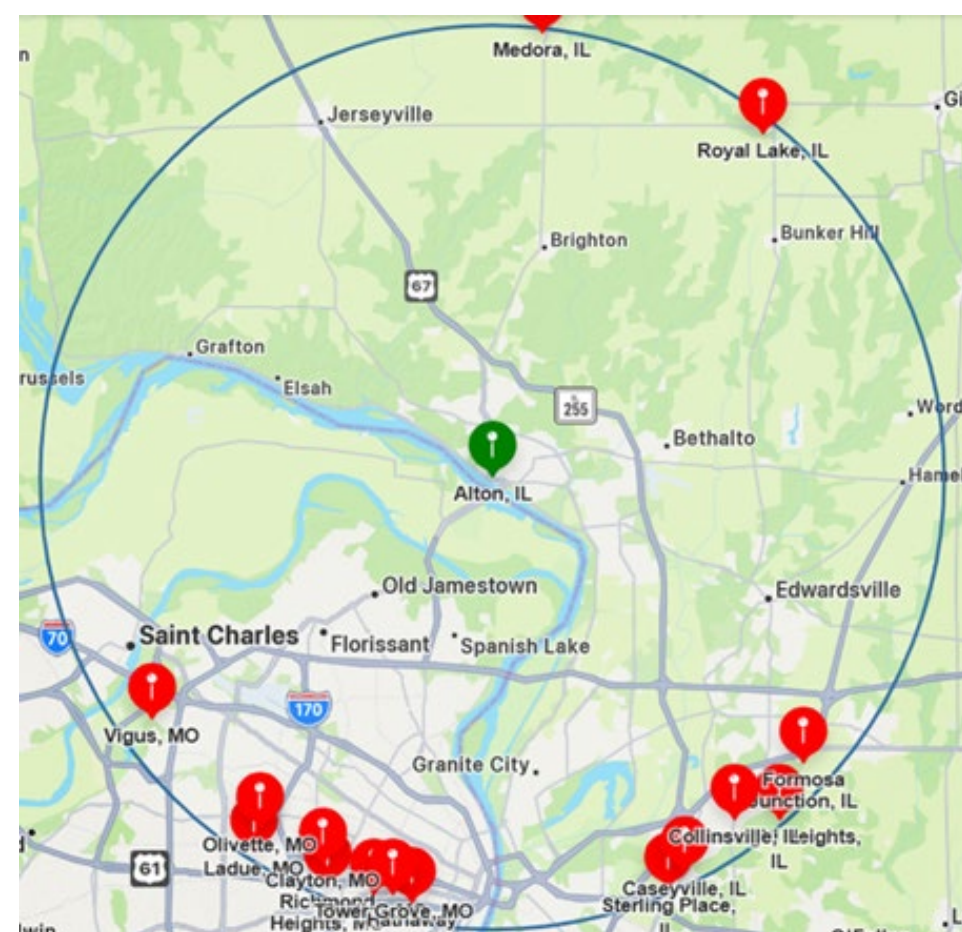
## Introduction

### United States

- 6% of U.S. adults lack reliable transportation — over 5 million people miss or delay medical care because of it
- Most affected groups:
  - 16% of adults below poverty level
  - 17.1% of American Indians/Alaskan Natives
  - 9.2% of Black Americans
  - 7% of adults aged 18-34

### Alton, Illinois

- 24.5% poverty rate (nearly double U.S. average)
- Median income: \$49,939
- Median home value: \$93,500
- 92.9% insured, but many on Medicaid (33%) and Medicare (12.7%)
- Estimated 986 residents without reliable transportation



## Objective

Improve access to pharmacy services for transportation-challenged individuals in Alton, Illinois to reduce healthcare disparities and improve health outcomes.

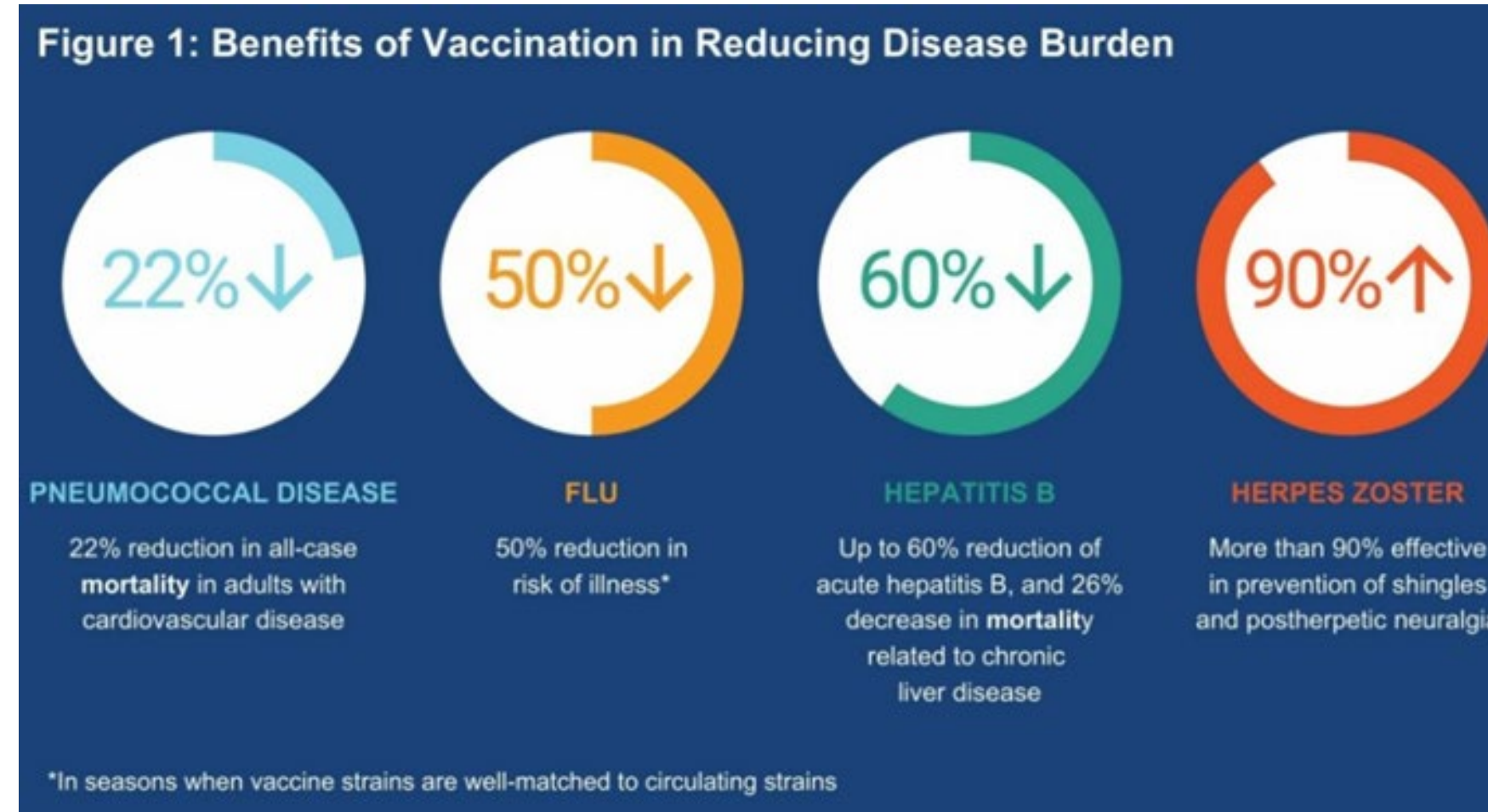
## Why transportation matters

- 25% of prescriptions are never filled
- 50% of prescriptions are taken incorrectly
- **Nonadherence:**
  - Results in \$300 billion in health care costs
  - Increased hospitalization, morbidity, and mortality

Derek Feldmann and Dillon Youngberg

## SIUE PHARMACY IMPACT PROJECT

1/29/2024



## Methods/Solution

### Process:

- Contacted local organizations including:
  - Churches, transportation services, and health departments
- Collected**
  - Service cost, eligibility criteria, and availability
- Organized services into categories**
  - Elderly/disabled, condition-specific, and general low-income
- Developed a comprehensive transportation guide**

## Results/Outcome

Identified 11 transportation services in Alton

### Services for elderly or disabled individuals

- Senior Services Plus
- Runabout Paratransit
- Medicare/Medicare Advantage
- Impact Center for Independent Living (IMPACT CIL)

### Condition-specific services

- HIV Care and Support
- Veterans Assistance
- Law and Grace Ministries.

### Low-cost options for low-income individuals

- Jewel Ride
- Madison County Transit
- Ride Finders Carpool/Vanpool
- Illinois Medicaid Managed Care Consumer Benefits

Program Name	Contact Information
Impact Center for Independent Living (IMPACT CIL)	2735 East Broadway Alton, IL 62002 (618) 462-1411 www.impactcil.org
Jewel Ride	2110 Troy Road Suite G Edwardsville, IL 62025 (618) 250-4771 info@jewelride.com
Law and Grace Ministries	413 East Main Street Belleville, IL 62220 (618) 235-6977 lawandgracebelleville@gmail.com
Madison County Transit (MCT) Public Bus Service	1 Transit Way Pontoon Beach, IL 62040 (618) 797-4600 info@mct.org
Runabout Paratransit Bus Service	1 Transit Way Pontoon Beach, IL 62040 (618) 931-7433 paratransit@mct.org
Senior Services Plus	2603 North Rodgers Avenue Alton, IL 62002 (618) 465-3298 ejackson@senior-servicesplus.org
Ride Finders Carpool/Vanpool	(314) 621-7433 RideFinders.org
St. Clair County Health Department - HIV Care and Supportive Services	19 Public Square Suite 150 Belleville, IL 62220 (618) 233-7703 scchealthdept.com
Veterans Assistance Commission	157 N. Main St. Suite 115 Edwardsville, IL 62025 (618) 296-4554 mcvac@madisoncountyil.gov
Illinois Medicaid Managed Care Consumer Benefits	Prescott Bloom Building 201 South Grand Avenue East Springfield, IL 62763 1-800-843-6154 hfs.illinois.gov
Medicare/Medicare Advantage	1-800-633-4227 medicare.gov

## Other Resources



## Discussion

### Key Findings:

- Limited transportation options in Alton, mostly serving specific groups

### Minor gaps:

- Elderly and disabled
- Few services (4/11 identified)

### Major gaps:

- Young and low-income
- Few services (4/11 identified), impacting larger populations

### Main Concern:

- Very few and selective services, leaving many without reliable transportation

### Who Should Be Notified:

- Alton residents
- Healthcare providers
- State & county agencies: IDPH, HFS, HHS, Madison County Health Department
- Elected officials (local, county, state)

## References



## Conclusion

- We identified and compiled affordable transportation options for Alton residents with transportation challenges
- Gaps remain for young, low-income individuals
- Future work should focus on expanding affordable programs and increasing collaboration between local agencies
- This project can serve as a model for similar communities