

SOUTHERN ILLINOIS UNIVERSITY  
EDWARDSVILLE

THE TIME  
IS NOW



TM



# Welcome TO SIUE!



SIUE offers an energetic and diverse environment where you can explore your interests and be part of something new and exciting.

## Our Students

**33%**

identify as people  
of color

**8%**

are international  
students

**12,000**

students from  
45 states  
and 68 nations

**11**

consecutive years  
Higher Education  
Excellence in  
Diversity Award  
*INSIGHT Into Diversity*

## Access and Affordability

**36%**

undergrads who  
are Pell-eligible

**25%**

undergrads who  
are first-generation  
college students

**50%**

undergrads who  
graduate with no  
student loan debt

**BEST COLLEGES  
IN THE U.S.**

recognized for the  
value we provide to  
our students, including  
graduation rates and  
graduate salaries  
*WSJ College Pulse  
Ranking 2025*



GET  
OUT  
THERE  
AND LEARN!

## WHAT WILL YOUR SIUE EXPERIENCE LOOK LIKE?

At SIUE, what you learn in the classroom is only the beginning. The opportunities for hands-on learning are seemingly endless.



# UNDERGRAD MAJORS

## Arts and Sciences

### Anthropology

### Applied Communication Studies

- Corporate and Organizational Communication
- Interpersonal Communication
- Public Relations

### Art

- Art Education\*
- Art History
- Art Studio

### Art and Design

- Ceramics
- Drawing
- Graphic Design
- Metalsmithing
- Painting
- Photography/Digital Arts
- Printmaking
- Sculpture
- Textiles

### Biological Sciences\*

- Ecology, Evolution, Conservation
- Genetics and Cellular Biology
- Integrative Biology
- Medical Science
- Medical Technology

### Chemistry

- ACS Certified in Biochemistry
- ACS Certified in Chemistry
- Biochemistry
- Bioprocess Chemistry
- Forensics Chemistry
- Medical Science
- Pharmaceutical Chemistry

### Criminal Justice Studies

### Economics

### English\*

- Secondary English Language Arts

### Environmental Sciences

- Environmental Health
- Environmental Management
- Environmental Toxicology

## Foreign Languages and Literature

- French\*
- German\*
- Spanish\*

### Geography\*

### History\*

- Applied Historical Method

### International Studies

- International Art, Culture and Communication
- International Development and Sustainability
- International Relations and Diplomacy

### Liberal Studies

### Mass Communications

- Advertising and Strategic Media
- Journalism
- Media Production

### Mathematical Studies\*

- Actuarial Science
- Applied Mathematics
- Pure Mathematics
- Statistics

### Music

- Jazz Performance
- Music Business
- Music Education\*
- Music History/Literature
- Music Performance
- Music Theory and Composition
- Musical Theater

### Philosophy

- Law

### Physics

### Political Science\*

### Social Work

### Sociology

- Diversity and Social Justice
- Employment Relations

### Theater and Dance\*

- Dance
- Design/Technical
- Performance

## Business

### Accountancy

### Business Administration

- Computer Information Systems
- Cybersecurity
- Data Analytics
- Economics
- Entrepreneurship
- Finance
- General Business Administration
- Human Resource Management
- International Business
- Management
- Marketing
- Supply Chain Management

## Education, Health and Human Behavior

### Early Childhood Education\*

### Elementary Education\*

### Exercise Science

### Nutrition

### Psychology

### Public Health

### Secondary Education

- Biology\*
- Chemistry\*
- English\*
- Geography\*
- History\*
- Mathematics\*
- Political Science\*
- Theater\*

### Special Education\*

### Speech-Language

### Pathology and Audiology

## Engineering

### Civil Engineering

### Computer Engineering

### Computer Science

### Construction Management

- Land Surveying

### Cybersecurity Engineering

### Electrical Engineering

### Industrial Engineering

### Mechanical Engineering

### Mechatronics and Robotics

### Engineering

### Surveying and Geomatics

## Nursing

### BS in Nursing, Traditional

### Accelerated BS in Nursing (2nd degree)

\*You can get your teaching license.

Academic program listing is current as of July 2025.

## Quality Academics

14:1

student-to-faculty ratio

20

average class size

350+

areas of study

## ACCELERATED COMBINED DEGREES

Save time and money! Earn graduate-level credit for courses taken as an undergrad.

- Civil Engineering
- Computer Engineering
- Computer Science
- Criminal Justice
- Electrical Engineering
- English
- Environmental Sciences
- Exercise Science
- Industrial Engineering
- Mathematics
- Mechanical Engineering
- Mechatronics and Robotics Engineering
- Mass Communications
- Nursing (Traditional)
- Accelerated Bachelor of Science in Nursing
- Accelerated Option for RN to BS in Nursing
- Political Science

## PRE-PROFESSIONAL ADVISING

Our pre-professional advisors will work with you to create a schedule that includes the classes you'll need to meet the requirements for professional school.

Pre-Chiropractic

Pre-Dental

Pre-Law

Pre-Medicine

Pre-Occupational Therapy

Pre-Optometry

Pre-Pharmacy

Pre-Physical Therapy

Pre-Physician Assistant

Pre-Podiatry

Pre-Veterinary

## INTEGRATIVE STUDIES

Create your own program by using approved:

- Environmental Sciences and Applied Communication Studies
- Psychology and Business Administration

## ONLINE BACHELOR'S DEGREES

Learn in a supportive, online environment from the same high-quality faculty who are teaching on campus.

- Accountancy
- Applied Communication Studies, Public Relations
- Business Administration
- Criminal Justice Studies
- Integrative Studies, Leadership in Organizations
- Psychology
- RN to BS Accelerated Option
- General Education Pathway

## PROFESSIONAL DEGREES

Dental Medicine, DMD  
Pharmacy, PharmD

## GRADUATE STUDIES

Are you considering furthering your education and exploring graduate school? The SIUE Graduate School offers a unique and rewarding experience. Choose from 100+ degree programs.



# LEARNING AT SIUE

It happens in the classroom. It also happens while wading in a pond, performing on stage, traveling abroad, or building a Baja car. Get ready to actively participate in the learning experience!



## Salamanders and Frogs. Memory Patterns. Cultural Bias. Microbiomes.

Lucky for you, faculty bring the cool and interesting research they're doing into classroom learning. Plus, the **Undergraduate Research and Creative Activities** program allows undergrads to work with faculty on projects other schools save for graduate students.

**Lovejoy Library** is your source for books, digital collections, online research tools, and helpful faculty librarians. You'll also find tilting chairs, nap pods, exercise bike desks, and a meditation room.

### ..... Pack your bags!

Make the world your classroom and study abroad for a few weeks or a whole semester. The courses you take there earn credit for you here. It's more affordable than you think.



## Honors at SIUE

### A unique SIUE experience!

The John Martinson Honors Program provides students with the experience of a small liberal arts college within a large and diverse state university. Students engage in a unique educational experience centered around curiosity, integrative learning, collaboration, resilience, and servant leadership.

## Check out the Meridian Scholarship

### SIUE's highest academic honor

- Covers four years of tuition, required student fees, housing, and a meal plan

Meridian Scholars are outstanding students who excel academically and enhance their communities with their unique perspectives and diverse backgrounds. If you have a 3.5+ GPA, you'll be invited to apply!





# CHOOSING A MAJOR

At SIUE, you can explore your interests and options before you declare a major. Your academic advisor and the Career Development Center can help you consider different career options and areas of study.

## All first-year students:

- Are directly admitted into a major
- Begin by exploring a meta major
- Or start as exploratory



## SIUE’s Meta Majors

- Arts and Humanities
- Business and Technology
- Engineering, Math, and Physics
- Exploratory
- Natural Sciences and Medical Professions
- Nursing and Health Professions
- Performing Arts
- Social and Behavioral Sciences
- Teaching and Learning

9



# COLLEGE OF ARTS AND SCIENCES

Amazing things happen when you are introduced to new ideas, experiences, and people! Delve into:

- Fine and performing arts
- Languages and communication
- Social sciences
- Math and sciences

Turn back to pages 4-5 for a list of undergrad majors.

**4 OUT OF 5 EMPLOYERS AGREE**  
The best employees have a broad knowledge of the liberal arts and sciences.

**Why?** They can think critically, communicate clearly, solve complex problems, and provide creative solutions.  
*The Association of American Colleges and Universities*

10



“/”

“I’m in classes I love and learning things I’m genuinely interested in. It doesn’t feel like I’m at school!”

Jane Hart  
Dance and Secondary Education double major  
Springfield, Illinois



# SCHOOL OF BUSINESS

Our accounting and business programs are accredited by AACSB International. **Less than 2% of business schools worldwide can say the same!**

- Accountancy
- Business Administration
  - Computer Information Systems
  - Cybersecurity
  - Data Analytics
  - Economics
  - Entrepreneurship
  - Finance
  - Human Resource Management
  - International Business
  - Management
  - Marketing
  - Supply Chain Management

## Prepare for the global marketplace

- Internships and co-ops at major corporations in and around St. Louis
- Professional networking events
- Study abroad and faculty-led travel study courses



# SCHOOL OF DENTAL MEDICINE

Every dental student in the Class of 2025 passed the Integrated National Board Dental Exams on the first try! **If you want to apply to dental school**, our pre-professional advisors can help you prepare.

## Community and Preventive Dentistry

- Give Kids a Smile Day
- Veterans Dental Care Day
- Special Olympics/Special Smiles
- National Children’s Dental Health Month



**3 + 4 = DMD**  
3-year BS in Biological Sciences  
4-year Doctor of Dental Medicine





# SCHOOL OF EDUCATION, HEALTH AND HUMAN BEHAVIOR

Become a highly qualified health professional or Pre-K-12 classroom teacher.

- Elementary, Early Childhood, Secondary, and Special Education
- Exercise Science
- Nutrition
- Public Health
- Psychology
- Speech-Language Pathology and Audiology

Apply what you're learning in a real-life setting.

- Community outreach clinics and programs
- Exercise Physiology Laboratory
- Internships, field experiences, and student teaching
- Nutrition Laboratory
- Research with faculty
- Virtual classroom practice lab



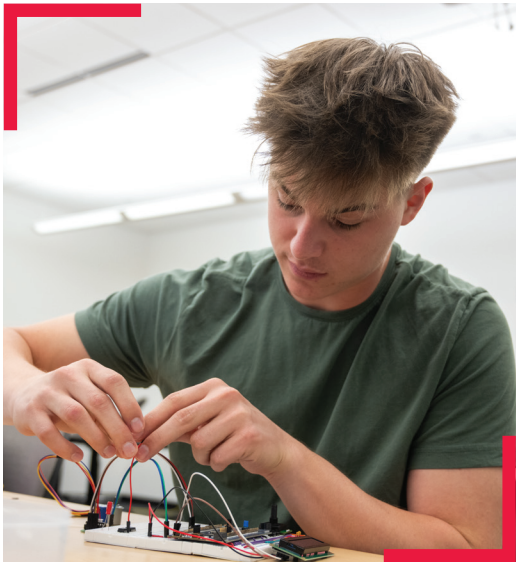
“ / ”

I'm getting real-world experience through internships, working in the digital systems and design lab, and collaborating with engineering professors on research projects. I can't explain enough how much I love my major!

Ximena Gonzalez Alfaro  
Computer Engineering major,  
Mathematics minor  
Edwardsville



# SCHOOL OF ENGINEERING



At SIUE, you'll join risk-takers, innovators, adventurers, and collaborators working together on complex and rewarding projects that improve the world.

- Civil Engineering
- Computer Engineering
- Computer Science
- Construction Management
- Cybersecurity Engineering
- Electrical Engineering
- Industrial Engineering
- Mechanical Engineering
- Mechatronics and Robotics Engineering
- Surveying and Geomatics

Nearly 100% placement of graduates in the engineering industry

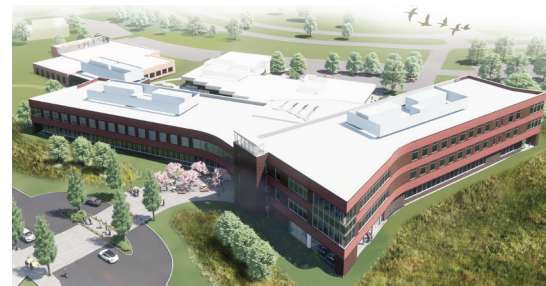


# SCHOOL OF NURSING

Your calling to care for others is a perfect prerequisite for a nursing career. Our program centers around providing **compassionate, high-quality patient care** that meets the needs of a diverse and ever-changing population.

## Introducing the New Health Sciences Complex!

The new state-of-the-art facility opened in August 2025 and houses the School of Nursing and the School of Pharmacy.



**Clinical experiences** are available in urban, rural, acute care, and critical access settings throughout the metro St. Louis area, and through global service trips.

Nurses with a **Bachelor of Science in Nursing** have demonstrated abilities that benefit patients and healthcare providers. SIUE nursing graduates are heavily recruited by surrounding hospitals and healthcare centers who know all about our commitment to outstanding patient care.



# SCHOOL OF PHARMACY

Pharmacists are vital healthcare team members committed to improving patient care by helping people live stronger, healthier lives. **Are you planning to apply to pharmacy school?** Our pre-pharmacy advisors can help you prepare.

Our graduates' NAPLEX exam pass rates continue to rank #1 in Illinois and have exceeded the state and national average every year since 2014!

## School of Pharmacy Conditional Entry Program

Once accepted, students who satisfy academic and program requirements have a space in the PharmD program.



**2 + 4 = PharmD**  
2-year Pre-Pharmacy  
4-year Doctor of Pharmacy



# YOUR MENTAL HEALTH MATTERS

SIUE nurtures an inclusive campus where all students are valued, have a voice, and feel connected to the community. But we know that college—and life—can be stressful.

**You'll find lots of support at SIUE.**

University Police are seen regularly around campus and in residence halls, sometimes with our favorite furry officers, Max and Chase—SIUE's K-9 therapy dogs. They're always happy to stop for a hug!







# STUDENT SUPPORT

You're making new friends, managing class assignments, and learning more about yourself. Let us help you settle in and provide extra support when needed.

## Counseling and Health Services

Offering comprehensive medical, behavioral, and wellness services

- Individual and group counseling, walk-in crisis hours, 24/7 virtual mental health resources, and trained peer support educators
- Health clinic and pharmacy

## Student Success Center

- Academic planning
- Accommodations for diverse learners
- Study rooms
- Tutoring and writing support
- A bright and cheerful place to study or catch up with friends

You'll find it all in the Student Success Center.



“/”

**“I love SIUE's beautiful campus and the support I receive from my professors.”**

Kayla Lorange  
Speech-Language Pathology  
and Audiology major  
Bloomington-Normal, Illinois

## We've got you!

An upperclass student mentor—we call them **Cougar Connectors**—can show you the ropes. Practice and learn winning strategies and skills with **Student Success Coaches**. Supplemental Instruction offers group study sessions for those challenging classes.

## Unique Learning Opportunities

**CODES:** Community-Oriented Digital Engagement Scholars

- Students who are first-generation, Pell-eligible, and/or historically underrepresented in their major replace gen ed classes with unique, collaborative research experiences. See page 34 for full tuition award details.

**SOAR:** Student Opportunities for Academic Results

- Advising, academic programming, and support resources for first-year students navigating the college experience.

**BSE:** Boundless Scholar Experience

- Students join a learning community, take several general education courses, and participate in co-curricular activities together.

**Summer Success Program**

- Incoming first-year students who are first-generation, low-income, and/or have a disability develop the skills over the summer they'll need to be successful in the fall.



# JUST ONE LOOK, THAT'S ALL IT TOOK.

Many students tell us they knew on their first visit that SIUE would be their new home. At 2,660 acres, our campus is big and beautiful. How big is that, really? We could fit 3,511 football fields on our campus!



Who's up for a game of pick-up volleyball? How about a spin class? **Campus Recreation** provides indoor and outdoor fun.



High-end gaming computers, NVIDIA GeForce RTX 2070 graphics cards, and Intel Core i5-8400 processors. All this and more can be found in the **Esports Arena**.



Painting **the Rock** is a popular campus tradition. It's a big chunk of the same granite used in the construction of the core campus buildings. Peck Hall and Lovejoy Library were the first to open in 1965.



Looking for a place to relax and unwind? The **Gardens at SIUE** is 36 acres of natural areas, gardens, bridges, and paved walking paths.



The **Morris University Center** is where you'll find the bookstore, a convenience store, Chick-fil-A®, Starbucks®, Auntie Anne's Pretzels®, and plenty of room to eat, study, and hang out.



Cheer on the Cougars in the **First Community Arena** at the Vadalabene Center. Commencement ceremonies are held here, too.



Esports Arena

Campus Recreation

First Community Arena

Morris University Center

The Rock

Office of Admissions

The Gardens



# LIVE WHERE YOU LEARN

**Live smart!**

Students who live on campus:

- Become involved in campus activities and meet lifelong friends
- Get personal support from live-in staff
- Are close to classes and campus resources
- Have higher GPAs and earn more credit hours per semester

Living on campus means you're steps away from coffee, your classes, the library, campus events, coffee, recreation, dining services ... did we mention coffee?

**Yes!**

- You can request a roommate
- We have safe spaces for all gender identities
- Accessible living units are available
- We'll help you move in

Live with students who like what you like!  
**First-Year Living Learning Communities**

- Business
- Education
- Engineering and Technology
- Health Professionals
- Honors
- Nursing
- Science and Math
- Social and Human Behavior

**Residency Requirement**

Students who graduated high school within the last 12 months must live on campus. You may submit an exemption request if you meet one of the approved reasons, like commuting from a parent/guardian's home address within 60 miles of campus.

First-year students live in Bluff, Prairie, or Woodland Hall.

**Shared and Deluxe Private Rooms\***



**\*Deluxe private and deluxe suite rooms assignments are based on space availability.**

**Deluxe Suite Rooms\***



“ ”

**“SIUE has given me some of the best and most true friends I’ve ever had.”**

Justin Campbell  
Theater and Dance major  
Prairie Hall resident  
Naperville, Illinois



## A circular inset photograph featuring four young women with long hair, smiling and posing for a photo. They are all wearing white t-shirts that have a heart-shaped logo on the front. The logo is a heart with a scalloped border, containing the text 'Alpha Phi' and several small red heart symbols. The woman on the far left is wearing a necklace with a heart pendant and has her mouth open in a joyful expression. The woman in the center foreground is smiling broadly. The woman on the far right is also smiling. The background of the photo is slightly blurred, showing other people and what appears to be an outdoor setting. The entire photo is framed by a thick red circular border.

“



# GO

# Cougars

SIUE Men's Basketball 2025  
OVC Conference Champs

NCAA Division I  
March Madness

## NCAA DIVISION I ATHLETICS



Ohio Valley Conference



Mid-American Conference,  
wrestling affiliate member

### Men's Sports

Baseball  
Basketball  
Cross Country  
Golf  
Soccer  
Track & Field  
Wrestling

### Women's Sports

Basketball  
Cross Country  
Soccer  
Softball  
Tennis  
Track & Field  
Volleyball

27

28



MEN'S  
BRACKET



#OVCIT  
#OVCTOURNEY



MEET

**EDDIE THE  
COUGAR!**

SIUE'S BELOVED  
MASCOT



# BE ACTIVE HAVE FUN



Play a game of disc golf or sand volleyball, take a group fitness class, try the climbing wall, or explore the trails. It's easy to do what you love and maybe find something new!

## 50+ Club Sports

Some of our most popular:

Pickleball

Esports

Bass Fishing .....

Football

Basketball

Dodgeball

Ice Hockey

Cheer and Dance



The SIUE campus is named a **Bicycle Friendly University** by the League of American Bicyclists. Enjoy:

- Running, walking, and biking trails that connect to the 180+ mile Madison County Transit trail system
- Off-road mountain biking and hiking
- Free bike share program and bike repair stands



**Be a regular at the Student Fitness Center.** Your student fees cover your membership, so why not? Bouldering cave and climbing gym, hardwood multi-purpose courts, state-of-the-art strength and cardio equipment, free-weight room, indoor pool, group fitness and cycling classes, indoor track, and Freshens Energy Zone®

## Free rentals!

You can use our bikes, boxing gloves, heart rate monitors, pickleball paddles, footballs, basketballs, and jump ropes. If you need it, we probably have it!



# GOING PLACES

Your time at SIUE will go way too fast. We can help you get a head start on what comes next so you're well-prepared for a successful, rewarding career.

## Career Preparation

The SIUE Career Development Center offers career exploration and counseling, internship and co-op programs, graduate school planning, resume critiques, career fairs, and more.



More than 2,300 employers recruited SIUE students and posted more than 11,700 jobs through the Career Development Center last year.

## A few of our amazing internship locations

- Ameren\*
- Anheuser-Busch
- Boeing
- Centene
- Edward Jones\*
- Enterprise Financial Services\*
- Fleishman-Hillard Inc.
- McCarthy Building Companies\*
- St. Louis Cardinals
- Walgreens Pharmacy
- World Wide Technology\*

\*U.S. News & World Report 2025-2026 Best Companies to Work For

Visit the (FREE!) Cougar Career Closet before that big interview.



**\$3.25 MILLION**

amount students earned last year at internships and co-ops

**\$21.24**

average hourly wage at internships and co-ops



SIUE alumni are making the world a better place in their own unique ways. We'd love to brag on everyone, but there's just not enough room!

**125,000**  
alumni and counting

**50 & 88**  
our alumni live and work in all 50 states and 88 countries

**Cynthia Chapple**  
**Empowering Black Girls**  
MS Chemistry '15  
Founding Director, Black Girls Do STEM

**Jason Frazier**  
**Supporting the Visually Impaired**  
BS Mass Communications '11  
CEO, MindsEye

**Jeffry Harrison**  
**Mobile Retail**  
BS Business Administration '12  
Co-founder and President, Rovertown

**Aftan Noon**  
**Fitness and Fashion**  
BA Art '13  
Fitness and Modeling Coach, FMG Pro Fitness Champion

**Spencer Patton**  
**Major League Baseball**  
BS Integrative Studies '21  
Pitcher

**Trey Perkins**  
**Actor**  
BA Theater and Dance '24  
Played Chickie Pete in double Oscar nominee "Nickel Boys"

**Brett Sheroky**  
**Country Music**  
BS Speech-Language Pathology and Audiology '06  
MS Speech-Language Pathology '08  
Country Singer and Songwriter

**Joey Thurman**  
**Celebrity Health and Fitness Expert**  
BS Liberal Studies '09  
Health, fitness, nutrition expert and bestselling author

**Darryl Tyler**  
**Certified Clothier/Fitter**  
BS Business Administration '03  
Owner, Tailored Gents at Savile Row

**Chico Weber**  
**Feeding the World (While Reducing Energy Use)**  
BS Manufacturing Engineering '13  
Inventor of GrowMotion robotic grow light





# WELCOME TO THE NEIGHBORHOOD

Edwardsville/Glen Carbon is a vibrant, student-friendly community with amazing local coffee shops and restaurants, plenty of shopping, and fun things to do.

## Local Charm

**Fun!** Concerts and art in City Park, a driving range and mini golf, laser tag, bowling, movies, a trampoline park, and more

**Explore!** Watershed nature center, parks, trails, and historical sites

**Shop!** Popular chains, a seasonal farmer’s market, and local boutiques, comic shops and bookstores, thrift stores, and more

**Eat!** Coffee shops, bakeries, ice cream shops, popular restaurant chains, and local restaurants (Some student favorites include Peel Pizza, Taj Indian Cuisine, and Wasabi Sushi Bar. Yum!)

**Look for the “Welcome SIUE Students” signs around town for special student discounts.**

**#14**  
**Safest College Towns in America**  
Edwardsville ranks 14 out of 50!

# ST. LOUIS *Highlights*



It’s just 25 minutes from SIUE to St. Louis!

## Attractions

- Gateway Arch National Park
- St. Louis Zoo
- Forest Park (one of the largest urban parks in the U.S.)
- St. Louis Science Center
- World Chess Hall of Fame
- Professional sports: Blues, Cardinals, CITY SC
- So many museums, theaters, and concert venues

## St. Louis Fortune 500 Companies

- Centene
- Core & Main
- Emerson Electric
- Graybar Electric
- Jones Financial-Edward Jones
- Post-Food Consumer Products
- Reinsurance Group of America



“/”

..... St. Louis has a lot to offer! It’s comforting knowing that the things I am used to at home in Chicago, I can do right here in STL.

Kaylin K. Paige  
Biological Sciences major  
Chicago



# PAYING FOR COLLEGE

## How much does it cost to attend SIUE?

Accessibility and affordability are very important to us. We hold the same accreditation as many of the nation’s top schools but charge significantly less for tuition.

Base Tuition*		Mandatory Fees*		Room and Board*		Total**
\$9,855	+	\$3,444	+	\$11,231	=	\$24,530

\*Undergraduate, two semesters, 15 credit hours each. Prices reflect the academic year 2025-2026 tuition rate. Room and board reflect costs in a shared room in a first-year residence hall and meal plan A. Some degree programs have course-specific fees.  
\*\*SIUE requires student health insurance for full-time domestic students with at least one on-ground class. Students may opt out by providing proof of health insurance coverage. Otherwise, the \$2,583 Student Health Insurance Fee will be charged.

### Financial Aid? Tell Me More!

- File the FAFSA as soon as possible, beginning in October, at studentaid.gov.
- Be sure to list SIUE as a school choice! Our federal school code is 001759.

### What is financial aid?

- **Grants** don’t need to be paid back and are awarded based on academic merit.
- **Scholarships** don’t have to be paid back and are awarded based on academic merit.
- **Loans** have to be paid back with interest.
- **Work study** provides on-campus work experience and a paycheck for tuition or living expenses.

### America’s Best Bang for the Buck Colleges

*Washington Monthly*  
SIUE is a smart choice for your money.

..... New undergrads pay a **guaranteed tuition rate** for 4 continuous academic years.

All U.S. undergraduate and graduate students **pay the in-state tuition**.

**Textbook Rental is included in student fees.** Save thousands of dollars each year!



## FIRST-YEAR AND TRANSFER STUDENT SCHOLARSHIPS

Scholarship	Requirements	Amount	Duration
<b>Cougar Pride</b>	3.0 GPA	Up to <b>\$16,000</b> for first-year students  Up to <b>\$6,000</b> for transfer students	Over <b>4</b> years  Over <b>2</b> years
<b>Johnetta Haley</b> <small>For students who are underrepresented in their anticipated field of study.</small>	3.0 GPA	Up to <b>\$8,000</b> for first-year students  Up to <b>\$4,000</b> for transfer students	Over <b>4</b> years  Over <b>2</b> years
<b>Meridian</b> <small>First-Year Students Only Fall entry only</small>	3.5 GPA	<b>Full tuition, fees, room and board</b>	Over <b>4</b> years
<b>CODES</b> <small>(Community-Oriented Digital Engagement Scholars)  For students interested in research and committed to community activism Fall entry only</small>	For students who are Pell-eligible, first-generation or historically underrepresented in their major	<b>Full tuition</b>	Over <b>4</b> years
<b>Phi Theta Kappa</b>	<b>Phi Theta Kappa Member</b>	<b>\$2,000</b>	<b>One-time</b> award

### Do you live in Illinois or Greater St. Louis?

SIUE will help close the gap in tuition, mandatory fees, and course-specific fees after utilizing financial aid from all federal, state, and institutional sources, including merit-based scholarships for families whose income is less than \$113,575 and assets are less than \$50,000 based on submitted FAFSA.

- SIUE Commitment: Illinois residents
- SIUE Gateway Opportunity: Greater St. Louis residents



# YOU HAVE QUESTIONS. WE HAVE ANSWERS.

## 1. What do I need to apply?

- Completed application: [siue.edu/apply](http://siue.edu/apply)
- Official high school transcript
- Transfer students: official transcript from each college attended (and high school if you have less than 30 credit hours)

## Typical SIUE first-year student profile

Class rank: 75% within top 50% of high school class

## 2. When can I apply?

### First-year students

- Application opens: August 1
- Priority application deadline: May 1

### Transfer students

- Application opens: August 1
- Application deadline: 4 weeks before start of the semester

## 3. Are SAT/ACT scores required?

Although test scores are not required for admission purposes, they are used to assist in course-level placement. You are encouraged to submit SAT/ACT scores during the admission process and before New Student Orientation. If you don't submit scores, a review of high school courses may be done for course placement, or you may take a placement assessment at SIUE.

## 4. What if I already have some college credits?

- SIUE accepts AP/IB, transferable college courses and some CLEP credit. Test score is required for AP/IB credit.
- You can take proficiency exams.

## 5. What about transfer students?

If you have:

- 30+ semester hours (post high school) from an accredited school and a 2.0 GPA (minimum), you'll be admitted!
- Less than 30+ semester hours (post high school), an official high school transcript is required.



SIUE has no application fee!



# PLAN YOUR VISIT TODAY!

We offer a variety of options because you just **have** to see this place!  
Schedule a daily visit or attend a visit event.

## Preview SIUE

Tour campus, meet faculty and current students, and see what it's like to be a student at SIUE.

Fall Preview

- October 4
- November 8

Spring Preview

- February 21
- March 28

## Daily Campus Visits

Monday-Friday and Select Saturdays

- Tour our beautiful campus and housing
- Hear from an Admissions representative about financial aid, student life, housing, and more

## Transfer Visit Days

Select Thursdays and Fridays

- Find out how easy it is to transfer to SIUE
- Tour our beautiful campus and upperclass housing





**Office of Admissions  
Campus Box 1600  
Edwardsville, IL 62026-1600  
618-650-3705 or 800-447-SIUE  
[admissions@siue.edu](mailto:admissions@siue.edu)  
[siue.edu/admissions](http://siue.edu/admissions)**

**Connect with us!**

 **@siuedwardsville**

 **@siue**

 **@siue**

 **@siuedwardsville**